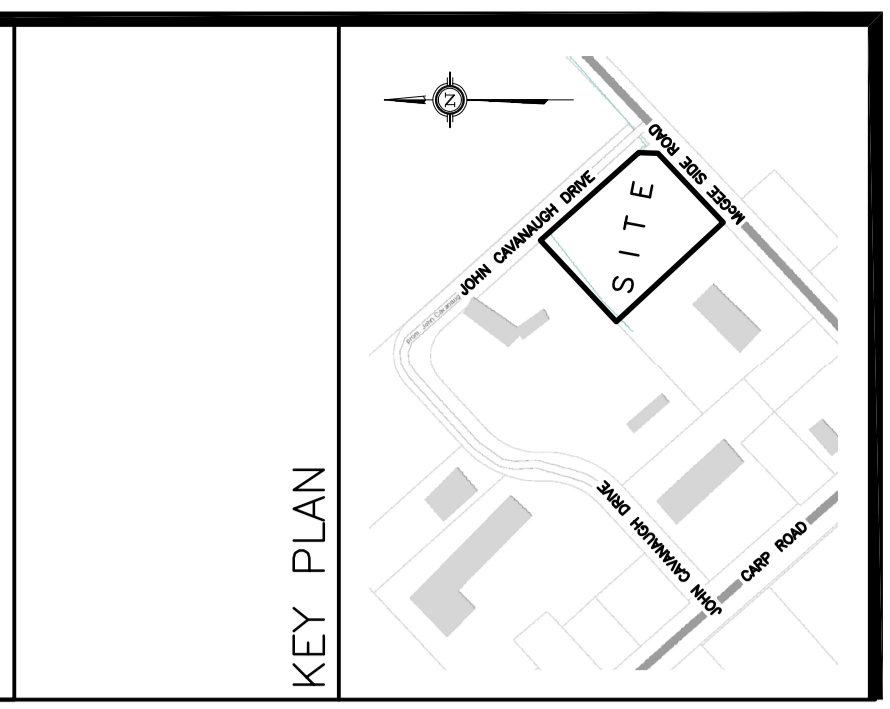


**DRAWING LEGEND**

INVT	INVERT OF PIPE
SAN	SANITARY SEWER
WL	WATER LINE
$+67.89$	EXISTING GRADE ELEVATION
$+67.89$	PROPOSED GRADE ELEVATION
$2\%$	EXISTING SLOPE OF GRADE
$2\%$	PROPOSED SLOPE OF GRADE
$\rightarrow$	TOP OF SLOPE
B.O.S	BOTTOM OF SLOPE
--- ---	CENTERLINE OF SWALE
---	SILT BARRIER FENCE
---	PROPERTY LINE
D.C	150mm CURB/DEPRESSED CURB
---	LIGHT-DUTY PAVEMENT
---	HEAVY-DUTY PAVEMENT
---	CONCRETE
---	LANDSCAPE
C.R.Z	CRITICAL ROOT ZONE
F.FL	FIRST FLOOR ELEVATION
USF	UNDERSIDE OF FOOTING



4	JUN 14-21	RE-ISSUED FOR APPROVAL
3	APR 22-21	ISSUED FOR BUILDING PERMIT
2	MAR 12-21	ISSUED FOR APPROVAL
1	JAN 27-21	ISSUED FOR REVIEW & COORDINATION
No.	DATE	REVISION

**D. B. GRAY ENGINEERING INC.**  
 Professional Engineer  
 700 Long Point Circle  
 Ottawa, Ontario  
 613-425-8044  
 dgray@dbgrayengineering.com

**CLS ROOFING LTD**  
**OFFICE & WAREHOUSE**  
**2167 MCGEE SIDE ROAD**  
 OTTAWA, ONTARIO

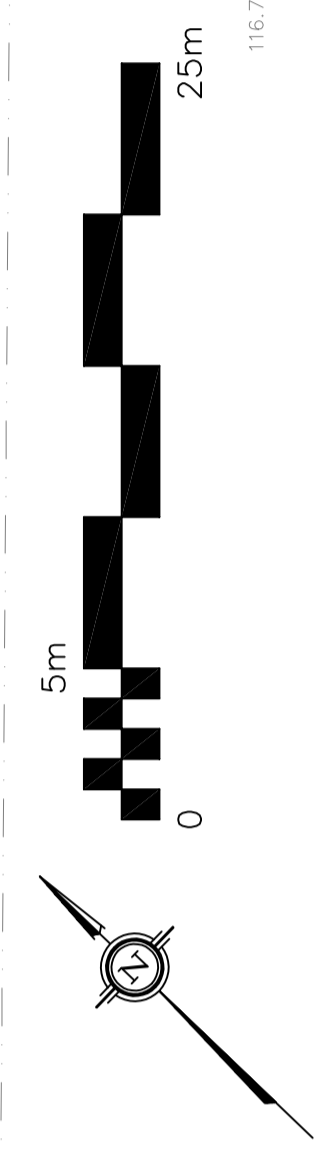
**EROSION & SEDIMENT CONTROL PLAN**

**Professional Engineer**  
**D.B. GRAY**  
 700 Long Point Circle  
 Ottawa, Ontario  
 613-425-8044  
 dgray@dbgrayengineering.com

Drawn: D.B.G  
 Hdr. Scale: 1:250  
 Vert. Scale: 1B-2D  
 Date: NOV 18-20  
 Rev. No.: 20088

Drawing No.: **C-3** of **6**

NOT VALID UNLESS SIGNED & DATED



REFER TO NOTES & DETAILS  
 ON DRAWINGS C-4 & C-5

McGEE SIDE ROAD

JOB BENCHMARK SPIKE IN UTILITY POLE ELEVATION = 119.00