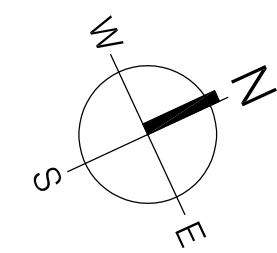
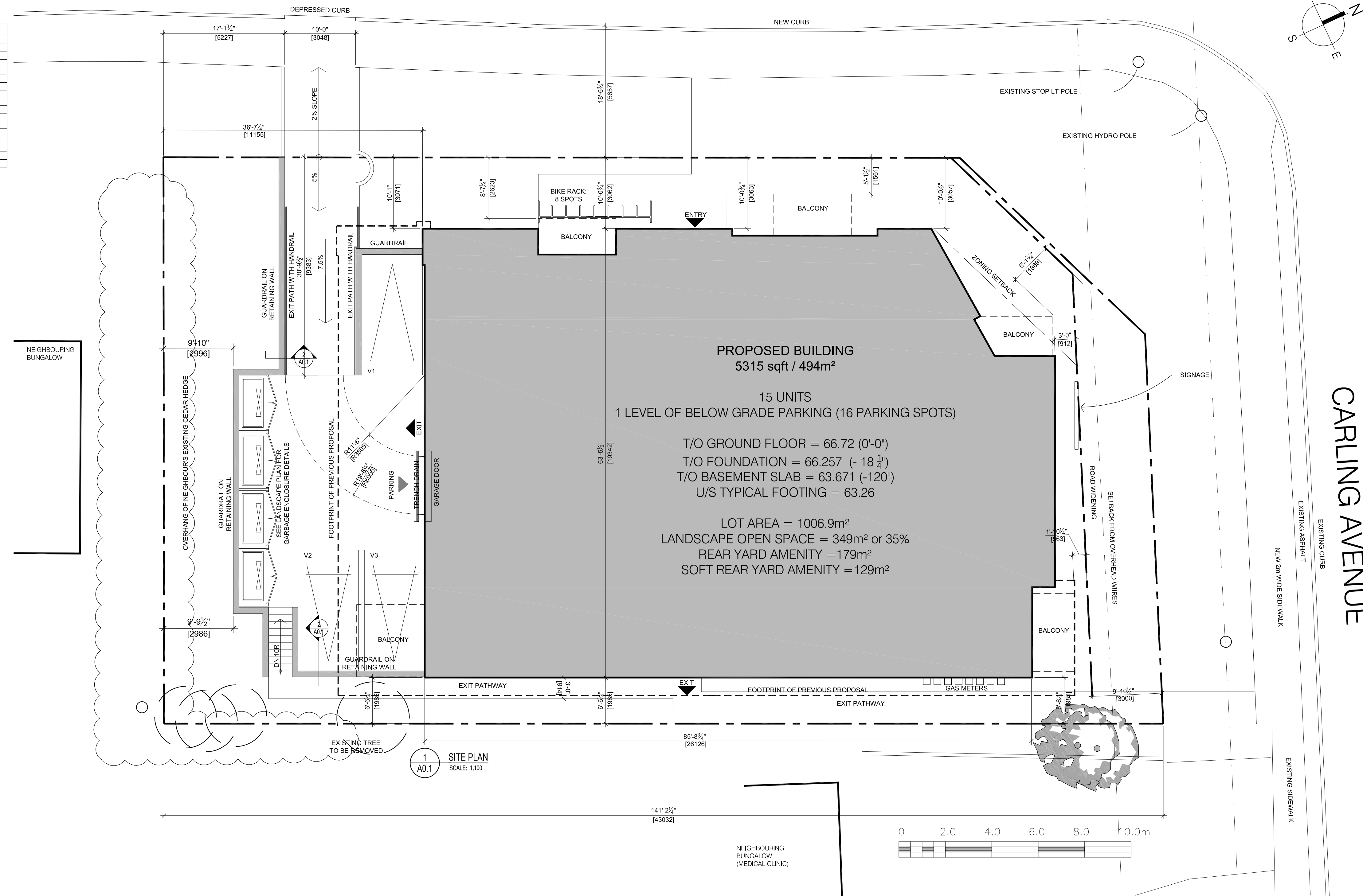
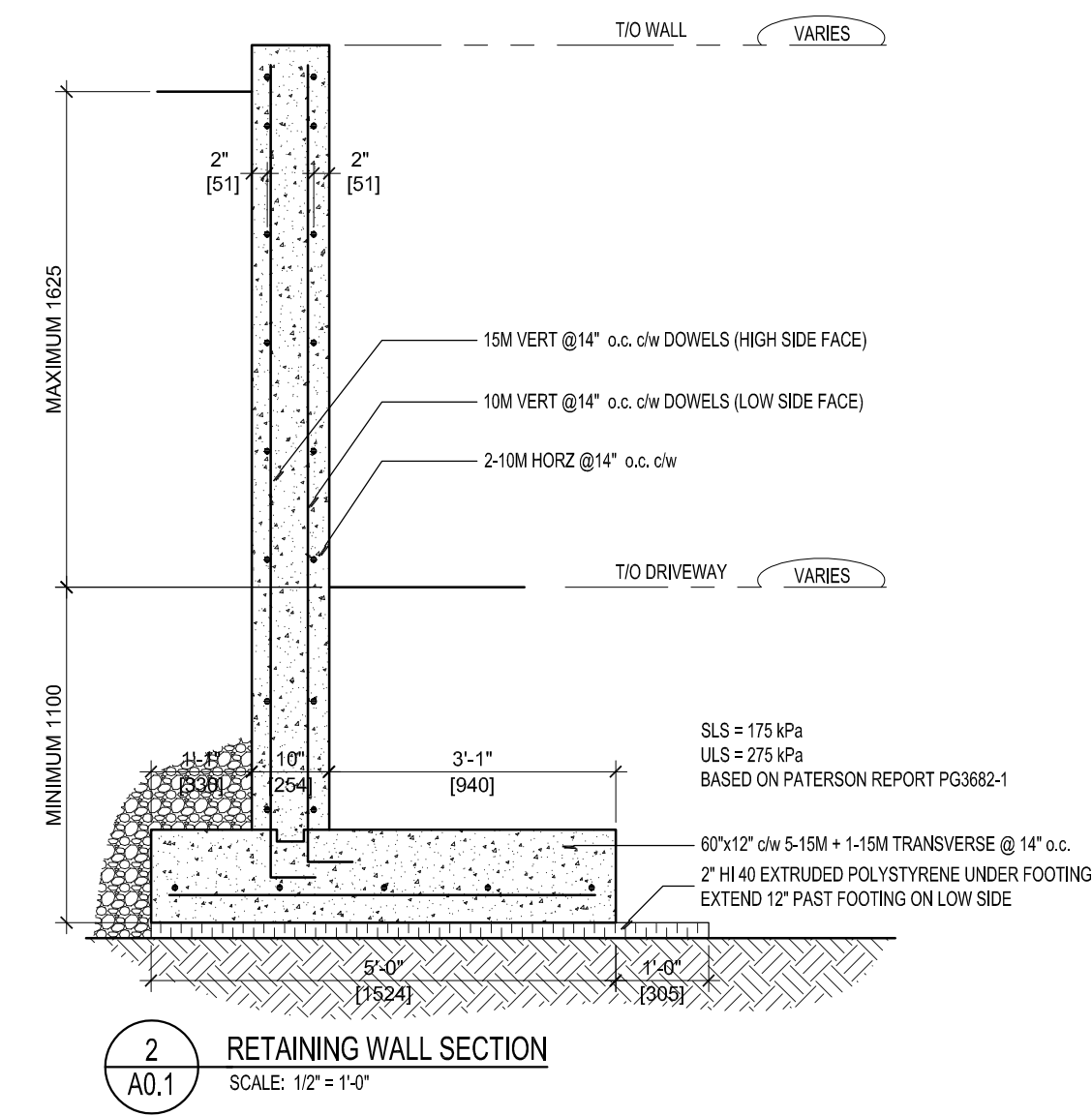


# BEDALE DRIVE



ZONING SUMMARY		
PROVISION	REQUIRED	PROVIDED
Lot area (m <sup>2</sup> )	No minimum	n/a
Lot width (min)	No minimum	n/a
Front yard setback	3 m	3.0 m
Corner side yard setback	3 m	3.0 m
Interior side yard setback (min)	1.2 m	2.0 m
Rear yard setback (min)	7.5 m	11.1 m
Height (max)	12.5 m	11.4 m
Required Number of Resident Parking Spaces	1.2/unit = 18 total	(variance granted) 16
Required Number of Visitor Parking Spaces	0.2/unit = 3 total	3 spaces
Bicycle Parking Spaces	0.5/unit = 8 total	8 spaces
Private Amenity Area	6m <sup>2</sup> per dwelling unit	6 m <sup>2</sup> rdw
Common Amenity Area	A minimum of 50% of the required total amenity area	yes
Landscape buffer along parking area	3 m	(variance granted) 2.9 m
Driving Aisle width (max)	3.6	yes

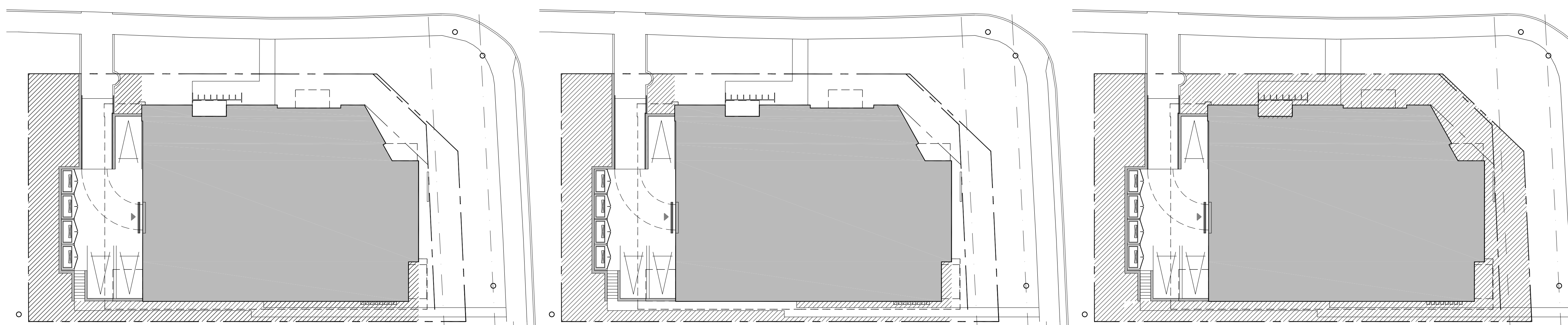


1 SITE PLAN  
SCALE: 1:100

APPROVED  REFUSED

THIS 9th DAY OF June, 2021

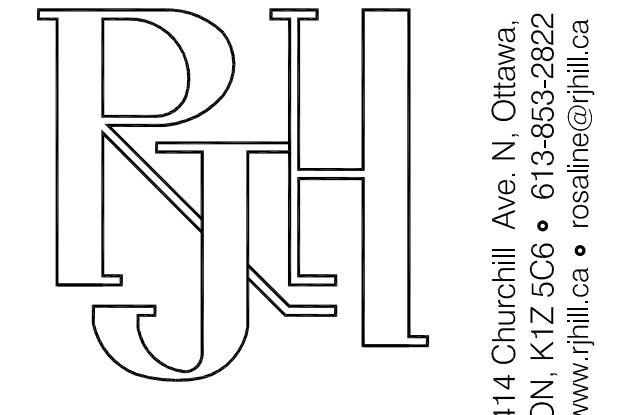
*Erin O'Connell*  
ERIN O'CONNELL, MCIP, RPP, MANAGER (A)  
DEVELOPMENT REVIEW, WEST  
PLANNING, INFRASTRUCTURE AND ECONOMIC  
DEVELOPMENT DEPARTMENT, CITY OF OTTAWA



TOTAL REAR YARD AMENITY = 179m<sup>2</sup>

TOTAL SOFT REAR YARD AMENITY = 147m<sup>2</sup>

LANDSCAPE AREA = 349m<sup>2</sup>



Rosaline J. Hill Architect Inc.

No.	Y / M / D	REVISION
9.	2021-05-06	SITE PLAN APPROVAL
8.	2021-03-26	REVISED PARKING
7.	2021-02-25	ISSUED FOR BUILDING PERMIT
6.	2021-02-23	REVISED PER SITE PLAN CONTROL COMMENTS
5.	2021-02-08	STRUCTURAL REVIEW
4.	2020-11-04	SITE PLAN CONTROL
3.	2020-09-14	COORDINATION
2.	2020-07-22	REVISED REAR YARD EXIT PATH
1.	2020-07-17	COORDINATION

It is the responsibility of the appropriate contractor to check & verify all dimensions on site and report all errors & omissions to the architect. All contractors must comply with all pertinent codes & by-laws, & use proprietary products as directed by the manufacturer. Do not scale drawings. This drawing may not be used for construction until issued as such. Copyright reserved.



KEEL APARTMENTS  
3368 Carling Ave, Ottawa, ON, K2H 5A8

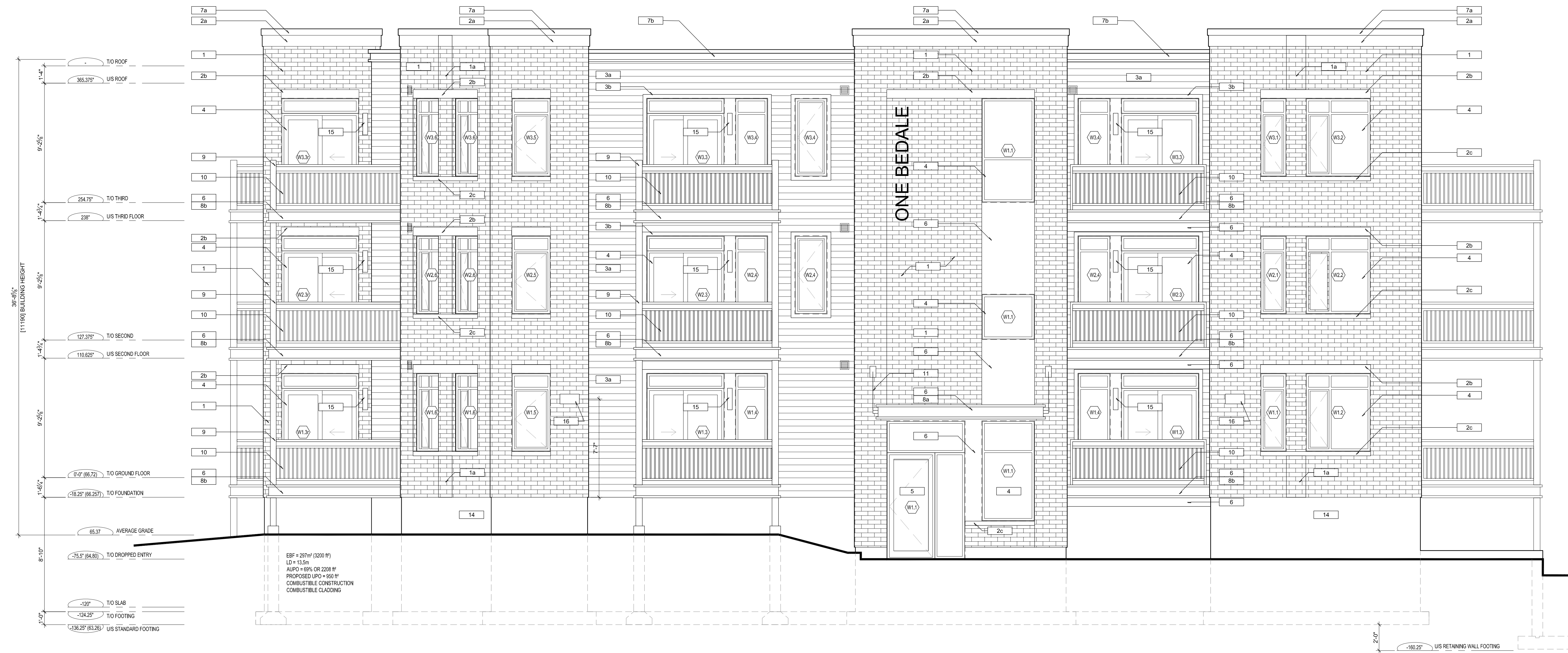
SITE PLAN

Drawn By:	AW	Date:	JULY 2020	A1.0
Project No:	1917	Scale:	1:100	



Keynote	Material	Manufacturer	Product	Colour	Comments
1	Brick Veneer	Meridian	Max	Cavendish 2	
2b	Precast Concrete Headers	Shouldice	8" Tapestry	Executive Grey	
2c	Precast Concrete Sills	Shouldice	4" Tapestry precast sills	Executive Grey	
2a	Stone Cornice Mosaic	Shouldice	12" Architectural Stone Tapestry finish	Executive Grey	
3a	Steel Masonry Angles	N/A	As per specs	Standard Grey	Includes all steel masonry lintels and overhead garage door steel angle at jamb/lintel
3b	Horizontal Siding	James Hardie	Cedermill Select 7"	Iron Gray	Please see architectural elevations for location of colours.
3c	Window Batten Trim	Hardie	Hardie Batten Trim	Iron Gray	
4	Column Cladding	Prestige	PVC Column, Painted	Black	
5	Soffit	Gentek	Aluminum	Black	
6	Fascia	Gentek	Aluminum	Black	
6	Prefinished Metal Flashing	As per specs	As per specs	Black	
7a + 7b	Parapet Cap Flashing	Gentek	Aluminum	"Graphite/Dover Gray"	"Graphite" at siding areas and "Dover Gray" at masonry areas.
7a + 7b	Prefinished Metal Parapet	Gentek	Aluminum	"Graphite"	Located between siding and parapet cap.
7c	Enclia	Gentek	Aluminum	To match adjacent materials	
8a + 8b	Wood Look Aluminum Vented Soffit	Cedar	As per specs	Black	
9	Aluminum Vented Soffit	Cedar	As per specs	Black	
10	Prestige PVC Column Cladding	Prestige	As per specs	Black	
11	Decorative Canopy Bracket	As per specs	As per specs	Black	
12	Sectional Steel Garage Door	Grey	As per specs	Grey	
13	Steel Exit Door	Grey	As per specs	Grey	
14	Cement Parking	As per specs	As per specs	Black	
15	Canform TAY IOL30MK 2LT 6W Type A, 4.5" x 20" x 5.75"	As per specs	As per specs	Black	
16	Lithonia MRWLED EXT WALL PACK LED 400K	As per specs	As per specs	Black	

No.	Y / M / D	REVISION
9.	2021-05-06	SITE PLAN APPROVAL
8.	2021-03-26	REVISED PARKING
7.	2021-02-25	ISSUED FOR BUILDING PERMIT
6.	2021-02-23	REVISED PER SITE PLAN CONTROL COMMENTS
5.	2021-02-08	STRUCTURAL REVIEW
4.	2020-11-04	SITE PLAN CONTROL
3.	2020-09-14	COORDINATION
2.	2020-07-22	REVISED REAR YARD EXIT PATH
1.	2020-07-17	COORDINATION



**1 WEST ELEVATION**  
 SCALE: 1/4" = 1'-0"

**KEY TO MATERIALS**  
 TO BE READ WITH THE ATTACHED EXTERIOR FINISH SCHEDULE

1	BRICK VENEER COLOUR: CAVENDISH 2 SIZE: MAX MORTAR COLOUR TO MATCH
1a	BRICK VENEER (RECESSED 1/2") COLOUR: CAVENDISH 2 SIZE: MAX MORTAR COLOUR TO MATCH
2a	SHOULDRICE STONE CORNICE COLOUR: GREY SIZE: 24" x 12" MORTAR COLOUR TO MATCH
2b	SHOULDRICE STONE HEADER COLOUR: GREY SIZE: 24" x 12" MORTAR COLOUR TO MATCH
2c	SHOULDRICE 1/4" SLOPED STONE SILL COLOUR: GREY SIZE: 24" x 3 1/2" MORTAR COLOUR TO MATCH
3a	HARDIE LAP SIDING TEXTURE: SMOOTH COLOUR: T80 (GREY)
3b	HARDIE TRIM TEXTURE: SMOOTH COLOUR: T80 (GREY)
4	ALUMINUM CLAD VINYL WINDOWS COLOUR: BLACK
5	ALUMINUM STORE FRONT ENTRY DOOR COLOUR: BLACK
6	PREFINISHED 22ga METAL COLOUR: BLACK SEE DETAILS FOR PROFILES
7a	PREFINISHED 22ga METAL CAP FLASHING COLOUR: T80 (TO MATCH STONE) SEE DETAILS FOR PROFILES
7b	PREFINISHED 22ga METAL CAP FLASHING AND CORNICE COLOUR: T80 (TO MATCH SIDING) SEE DETAILS FOR PROFILES
7c	OVERFLOW SCUPPER COLOUR: T80 (TO MATCH SIDING)
8a	WOOD LOOK ALUMINUM VENTED SOFFIT COLOUR: CEDAR
8b	ALUMINUM VENTED SOFFIT COLOUR: BLACK
9	PRESTIGE PVC COLUMN CLADDING COLOUR: BLACK
10	ALUMINUM BALCONY GUARD. COLOUR: BLACK ENGINEERED DRAWINGS TO BE PROVIDED TO BUILDING INSPECTOR
11	DECORATIVE CANOPY BRACKET COLOUR: BLACK SEE DETAILS
12	SECTIONAL STEEL GARAGE DOOR COLOUR: GREY
13	STEEL EXIT DOOR COLOUR: BLACK
14	CEMENT PARKING
15	CANFORM TAY IOL30MK 2LT 6W TYPE A, 4.5" x 20" x 5.75"
16	LITHONIA MRWLED EXT WALL PACK LED 400K

It is the responsibility of the appropriate contractor to check & verify all dimensions on site and report all errors &/or omissions to the architect. All contractors must comply with all pertinent codes & by-laws, & use proprietary products as directed by the manufacturer. Do not scale drawings. This drawing may not be used for construction until issued as such. Copyright reserved.



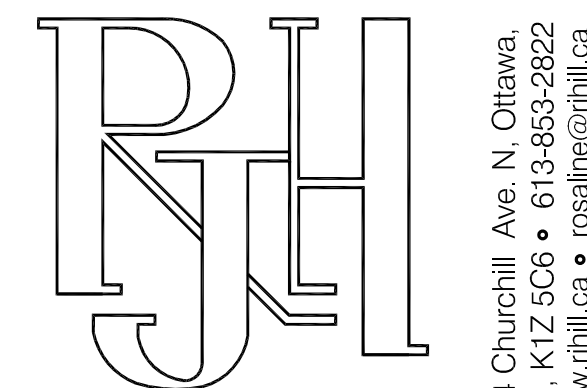
**KEEL APARTMENTS**  
 3368 Carling Ave, Ottawa, ON, K2H 5A8

**WEST ELEVATION**

Drawn By:	XX	Date:	JULY 2020
Project No:	1917	Scale:	1/4" = 1'-0"

**A2.1**

Carling Ave Exterior Finish Schedule					15-Dec-20
Keynote	Material	Manufacturer	Product	Colour	Comments
1	Brick Veneer	Meridian	May	Cavendish 2	
2b	Precast Concrete Headers	Shouldice	8" Tapestry	Executive Grey	
2c	Precast Concrete Sills	Shouldice	4" Tapestry precast sills	Executive Grey	
2a	Stone Cornice	Shouldice	12" Architectural Stone Tapestry finish	Executive Grey	
	Mortar	Interstar	As per specs	Standard Grey	
3a	Steel Masonry Angles	N/A	As per specs		Includes all steel masonry lintels and overhead garage door steel angle at jamb/lintel
	Horizontal Siding	James Hardie	Cedermill Select 7"	Iron Gray	Please see architectural elevations for location of colours.
3b	Window Batten Trim	Hardie	Hardie Batten Trim	Iron Gray	
8a + 8b	Column Cladding	Prestige	PVC Column, Painted	Black	
6	Soffit	Gentek	Aluminum	Black	
6	Prefinished Metal Flashing	As per specs	As per specs	Black	
7a + 7b	Parapet Cap Flashing	Gentek	Aluminum	"Graphite/Dover Gray"	"Graphite" at siding areas and "Dover Gray" at masonry areas.
	Prefinished Metal Parapet	As per specs	As per specs	"Graphite"	Located between siding and parapet cap.
7c	Roof Scupper	As per specs	As per specs	To match adjacent materials	
9	Chimney	As per specs	As per specs	Black	
10	Aluminum Rolling System	TBD	Aluminum, square top rail, square pickets/posts	Black	Colour sample to be provided with tender
4	Vinyl Entry Windows	TBD	Aluminum, square top rail, square pickets/posts	Black	
11	Decorative Canopy Bracket	Ditect	Classic	Granite	
12	Sectional Steel Garage Door	As per specs	As per specs	Black	Including ground floor podium decks
5	Storefront Entry System	As per specs	As per specs	Color Gray	Colour samples to be provided with tender



Rosaline J. Hill Architect Inc.

414 Churchhill Ave. N. Ottawa,  
ON, K1Z 5G6 • 613-853-2822  
www.rjhil.ca • rosahill@rjhil.ca

No.	Y / M / D	REVISION
9.	2021-05-06	SITE PLAN APPROVAL
8.	2021-03-26	REVISED PARKING
7.	2021-02-25	ISSUED FOR BUILDING PERMIT
6.	2021-02-23	REVISED PER SITE PLAN CONTROL COMMENTS
5.	2021-02-08	STRUCTURAL REVIEW
4.	2020-11-04	SITE PLAN CONTROL
3.	2020-09-14	COORDINATION
2.	2020-07-22	REVISED REAR YARD EXIT PATH
1.	2020-07-17	COORDINATION



1 NORTH ELEVATION  
SCALE: 1/4" = 1'-0"

KEY TO MATERIALS  
TO BE READ WITH THE ATTACHED EXTERIOR FINISH SCHEDULE

- 1 BRICK VENEER  
COLOUR: CAVENDISH 2  
SIZE: MAN  
MORTAR COLOUR TO MATCH
- 1a BRICK VENEER (RECESSED 12")  
COLOUR: CAVENDISH 2  
SIZE: MAN  
MORTAR COLOUR TO MATCH
- 2a SHOULDRICE STONE CORNICE  
COLOUR: GREY  
SIZE: 24"x12"  
MORTAR COLOUR TO MATCH
- 2b SHOULDRICE STONE HEADER  
COLOUR: GREY  
SIZE: 24"x6"  
MORTAR COLOUR TO MATCH
- 2c SHOULDRICE 1/4" SLOPED STONE SILL  
COLOUR: GREY  
SIZE: 24" x 3/4"  
MORTAR COLOUR TO MATCH
- 3a HARLIE LAP SIDING  
TEXTURE: SMOOTH  
COLOUR: TBD (GREY)
- 3b HARLIE TRIM  
TEXTURE: SMOOTH  
COLOUR: TBD (GREY)
- 4 ALUMINUM CLAD VINYL WINDOWS  
COLOUR: BLACK
- 5 ALUMINUM STORE FRONT ENTRY DOOR  
COLOUR: BLACK
- 6 PREFINISHED 22ga METAL  
COLOUR: BLACK  
SEE DETAILS FOR PROFILES
- 7a PREFINISHED 22ga METAL CAP FLASHING  
COLOUR: TBD (TO MATCH STONE)  
SEE DETAILS FOR PROFILES
- 7b PREFINISHED 22ga METAL CAP FLASHING  
AND CORNICE  
COLOUR: TBD (TO MATCH SIDING)  
SEE DETAILS FOR PROFILES
- 7c OVERFLOW SCUPPER  
COLOUR: TBD (TO MATCH SIDING)
- 8a WOOD LOOK ALUMINUM VENTED SOFFIT  
COLOUR: CEDAR
- 8b ALUMINUM VENTED SOFFIT  
COLOUR: BLACK
- 9 PRESTIGE PVC COLUMN CLADDING  
COLOUR: BLACK
- 10 ALUMINUM BALCONY GUARD.  
COLOUR: BLACK  
ENGINEERED DRAWINGS TO BE PROVIDED TO BUILDING INSPECTOR
- 11 DECORATIVE CANOPY BRACKET  
SEE DETAILS
- 12 SECTIONAL STEEL GARAGE DOOR  
COLOUR: GREY
- 13 STEEL EXIT DOOR  
COLOUR: BLACK
- 14 CEMENT PARKING
- 15 CANARM TAY IOL308MK 2LT  
60W TYPE A, 4.5'W x 20'H x 5.75'D
- 16 LITHONIA MRWLED EXT WALL PACK  
LED 4000K

It is the responsibility of the appropriate contractor to check & verify all dimensions on site and report all errors &/or omissions to the architect. All contractors must comply with all pertinent codes & by-laws, & use proprietary products as directed by the manufacturer. Do not scale drawings. This drawing may not be used for construction until issued as such. Copyright reserved.



KEEL APARTMENTS  
3368 Carling Ave, Ottawa, ON, K2H 5A8

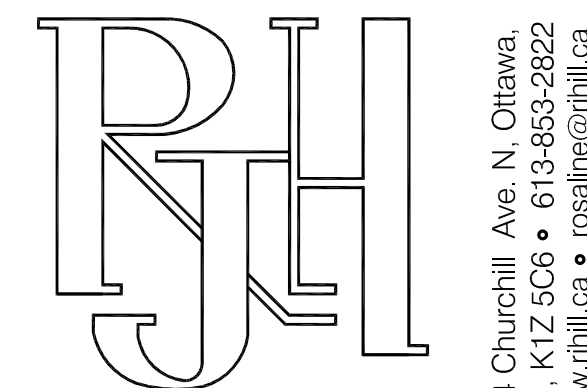
NORHT ELEVATION

Drawn By: XX	Date: JULY 2020	A2.2
Project No: 1917	Scale: 1/4" = 1'-0"	



Carling Ave Exterior Finish Schedule				15-Dec-20	
Keynote	Material	Manufacturer	Product	Colour	Comments
1	Brick Veneer	Meridian	May	Cavendish 2	
2b	Precast Concrete Headers	Shouldice	8" Tapestry Sills	Executive Grey	
2c	Precast Concrete Sills	Shouldice	4" Tapestry precast sills	Executive Grey	
2a	Stone Cornice	Shouldice	12" Architectural Stone Tapestry finish	Standard Grey	
	Mortar	Interstar	As per specs		Includes all steel masonry lintels and overhead garage door steel angle at jamb/lintel
3a	Steel Masonry Angles	N/A	As per specs		
	Horizontal Siding	James Hardie	Cedermill Select 7"	Iron Gray	Please see architectural elevations for location of colours.
3b	Window Batten Trim	Hardie	Hardie Batten Trim	Iron Gray	
	Column Cladding	Prestige	PVC Column, Painted	Black	
8a + 8b	Soffit	Gentek	Aluminum	Black	
6	Fascia	Gentek	Aluminum	Black	
6	Prefinished Metal Flashing	As per specs	As per specs	Black	
7a + 7b	Parapet Cap Flashing	Gentek	Aluminum	"Graphite/Dover Gray"	"Graphite" at siding areas and "Dover Gray" at masonry areas.
	Prefinished Metal Parapet	As per specs	As per specs	"Graphite"	Located between siding and parapet cap.
9	Enclia	Gentek	Aluminum	Black	
7c	Roof Scupper	As per specs	As per specs	To match adjacent materials	
13	Entry Steel Doors	As per specs	As per specs	Black	
4	Vinyl Entry Windows	As per specs	As per specs	Black	
10	Aluminum Rolling System	TBD	As per specs	Black	Colour sample to be provided with tender
12	Exterior Balcony Decking	Aluminum, square top rail, square pickets/posts	Classic	Granite	Including ground floor podium decks
6	Entry Eyebrow Feature	Aluminum	Classic	Black	
12	Overhead Garage Door	Ch	G-5000 (As per specs)	Color: Gray	
5	Storefront Entry System	As per specs	As per specs	Black	Colour samples to be provided with tender

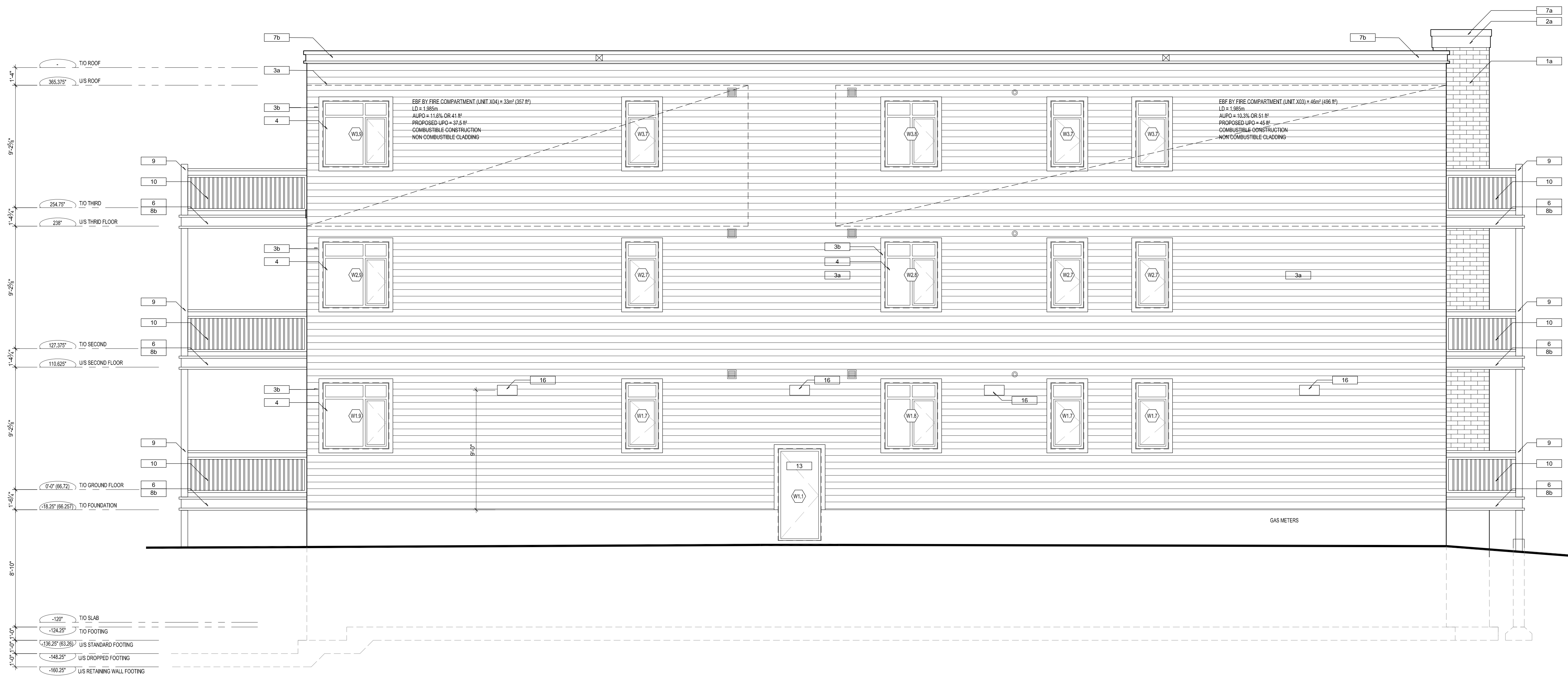
Revised Jan 14, 2021



Rosaline J. Hill Architect Inc.

414 Churchhill Ave. N. Ottawa, ON, K1Z 5G6 • 613-853-2822  
www.rjhil.ca • rosahill@rjhil.ca

9.	2021-05-06	SITE PLAN APPROVAL
8.	2021-03-26	REVISED PARKING
7.	2021-02-25	ISSUED FOR BUILDING PERMIT
6.	2021-02-23	REVISED PER SITE PLAN CONTROL COMMENTS
5.	2021-02-08	STRUCTURAL REVIEW
4.	2020-11-04	SITE PLAN CONTROL
3.	2020-09-14	COORDINATION
2.	2020-07-22	REVISED REAR YARD EXIT PATH
1.	2020-07-17	COORDINATION
No.	Y / M / D	REVISION



1 EAST ELEVATION  
SCALE: 1/4" = 1'-0"

KEY TO MATERIALS  
TO BE READ WITH THE ATTACHED EXTERIOR FINISH SCHEDULE

- 1 BRICK VENEER  
COLOUR: CAVENDISH 2  
SIZE: MAN  
MORTAR COLOUR TO MATCH
- 1a BRICK VENEER (RECESSED 1/2")  
COLOUR: CAVENDISH 2  
SIZE: MAN  
MORTAR COLOUR TO MATCH
- 2a SHOULDICE STONE CORNICE  
COLOUR: GREY  
SIZE: 24"x12"  
MORTAR COLOUR TO MATCH
- 2b SHOULDICE STONE HEADER  
COLOUR: GREY  
SIZE: 24"x6"  
MORTAR COLOUR TO MATCH
- 2c SHOULDICE 1/4" SLOPED STONE SILL  
COLOUR: GREY  
SIZE: 24" x 3/4"  
MORTAR COLOUR TO MATCH
- 3a HARDIE LAP SIDING  
COLOUR: TBD (GREY)  
TEXTURE: SMOOTH
- 3b HARDIE TRIM  
COLOUR: TBD (GREY)  
TEXTURE: SMOOTH
- 4 ALUMINUM CLAD VINYL WINDOWS  
COLOUR: BLACK
- 5 ALUMINUM STORE FRONT ENTRY DOOR  
COLOUR: BLACK
- 6 PREFINISHED 22ga METAL  
COLOUR: BLACK  
SEE DETAILS FOR PROFILES
- 7a PREFINISHED 22ga METAL CAP FLASHING  
COLOUR: TBD (TO MATCH STONE)  
SEE DETAILS FOR PROFILES
- 7b PREFINISHED 22ga METAL CAP FLASHING  
AND CORNICE  
COLOUR: TBD (TO MATCH SIDING)  
SEE DETAILS FOR PROFILES
- 7c OVERFLOW SCUPPER  
COLOUR: TBD (TO MATCH SIDING)
- 8a WOOD LOOK ALUMINUM VENTED SOFFIT  
COLOUR: CEDAR
- 8b ALUMINUM VENTED SOFFIT  
COLOUR: BLACK
- 9 PRESTIGE PVC COLUMN CLADDING  
COLOUR: BLACK
- 10 ALUMINUM BALCONY GUARD.  
COLOUR: BLACK  
ENGINEERED DRAWINGS TO BE PROVIDED TO BUILDING INSPECTOR
- 11 DECORATIVE CANOPY BRACKET  
COLOUR: GREY  
SEE DETAILS
- 12 SECTIONAL STEEL GARAGE DOOR  
COLOUR: GREY
- 13 STEEL EXIT DOOR  
COLOUR: BLACK
- 14 CEMENT PARKING
- 15 CANARM TAY IOL308MK 2LT  
6WV TYPE A, 4.5"W x 20"H x 5.75"D
- 16 LITHONIA MRWLED EXT WALL PACK  
LED 400K

It is the responsibility of the appropriate contractor to check & verify all dimensions on site and report all errors &/or omissions to the architect. All contractors must comply with all pertinent codes & by-laws, & use proprietary products as directed by the manufacturer. Do not scale drawings. This drawing may not be used for construction until issued as such. Copyright reserved.



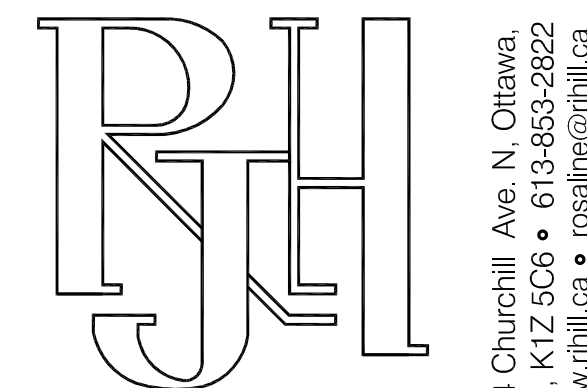
KEEL APARTMENTS  
3368 Carling Ave, Ottawa, ON, K2H 5A8

EAST ELEVATION

Drawn By:	Date:	A2.3
XX	JULY 2020	
Project No:	Scale:	
1917	1/4" = 1'-0"	

Carling Ave Exterior Finish Schedule					15-Dec-20
Keynote	Material	Manufacturer	Product	Colour	Comments
1	Brick Veneer	Meridian	Max	Cavendish 2	
2b	Precast Concrete Headers	Shouldice	8" Tapestry Corne	Executive Grey	
2c	Precast Concrete Sills	Shouldice	4" Tapestry precast sills	Executive Grey	
2a	Stone Cornice	Shouldice	12" Architectural Stone Tapestry finish	Executive Grey	
	Mortar	Interstar	As per specs	Standard Grey	
3a	Steel Masonry Angles	N/A	As per specs		Includes all steel masonry lintels and overhead garage door steel angle at jamb/lintel
	Horizontal Siding	James Hardie	Cedermill Select 7"	Iron Gray	Please see architectural elevations for location of colours.
3b	Window Batten Trim	Hardie	Hardie Batten Trim	Iron Gray	
9	Column Cladding	Prestige	PVC Column, Painted	Black	
8a + 8b	Soffit	Gentek	Aluminum	Black	
6	Fascia	Gentek	Aluminum	Black	
6	Prefinished Metal Flashing	As per specs	As per specs	Black	
7a + 7b	Parapet Cap Flashing	Gentek	Aluminum	"Graphite/Dover Gray"	"Graphite" at siding areas and "Dover Gray" at masonry areas.
	Prefinished Metal Parapet	As per specs	As per specs	"Graphite"	Located between siding and parapet cap.
9	Fascia	Gentek	Aluminum	To match adjacent materials	
7c	Culking	As per specs	As per specs	Black	
	Roof Scupper	As per specs	As per specs	Black	
13	Entry Steel Doors	As per specs	As per specs	Black	Colour sample to be provided with tender
4	Vinyl Entry Windows	TBD	As per specs	Black	
10	Aluminum Rolling System	TBD	Aluminum, square top rail, square pickets/posts	Black	
	Exterior Balcony Decking	Diectec	Classic	Granite	Including ground floor podium decks
6	Entry Eyebrow Feature	As per specs	Aluminum	Black	
12	Overhead Garage Door	Ch	G-5000 (As per specs)	Color Gray	
5	Storefront Entry System	As per specs	As per specs	Black	Colour samples to be provided with tender

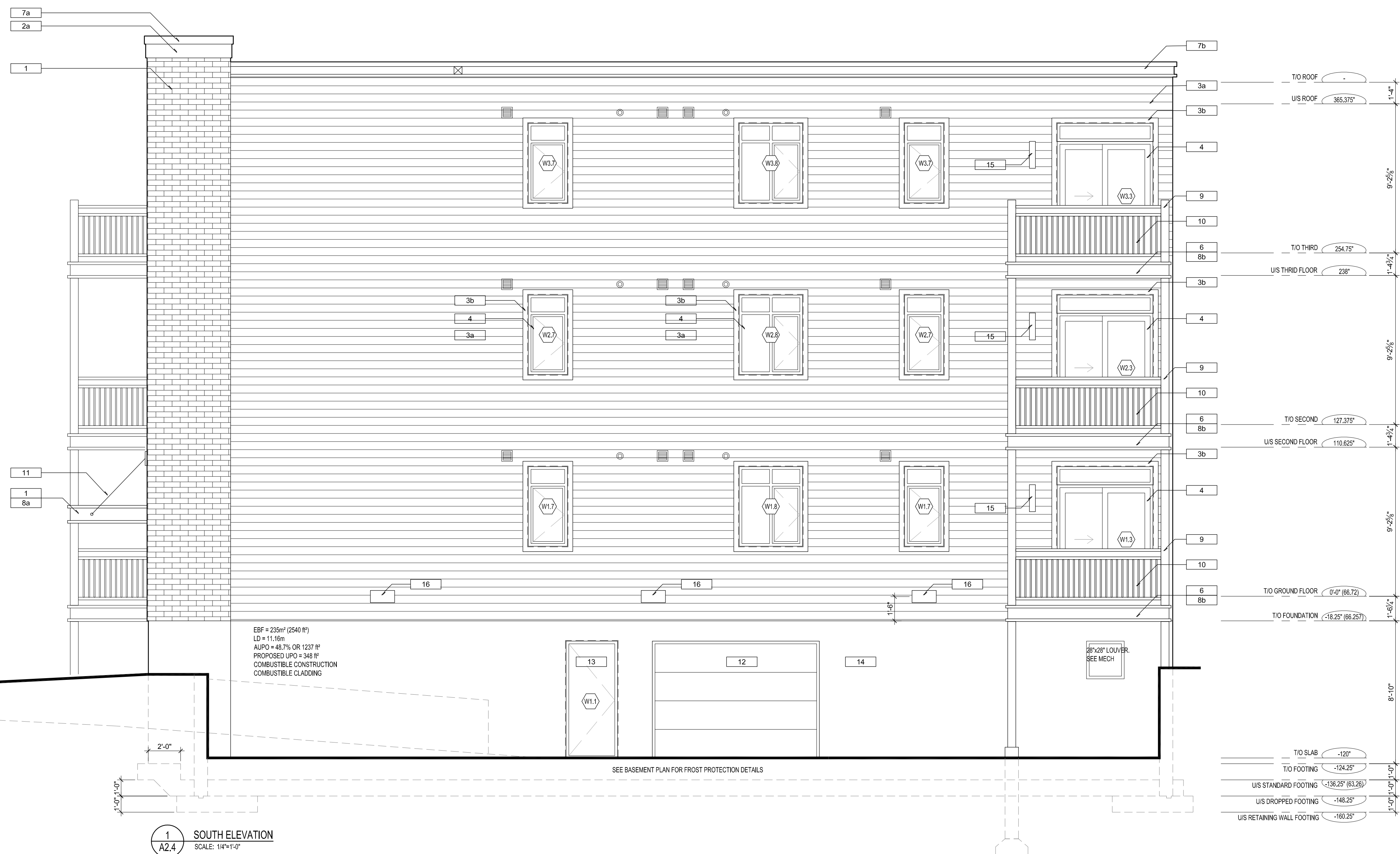
Revised Jan 14, 2021



414 Churchhill Ave. N. Ottawa, ON, K1Z 5G6 • 613-853-2822  
www.rh.ca • rosaline@rh.ca

Rosaline J. Hill Architect Inc.

No.	Y / M / D	REVISION
9.	2021-05-06	SITE PLAN APPROVAL
8.	2021-03-26	REVISED PARKING
7.	2021-02-25	ISSUED FOR BUILDING PERMIT
6.	2021-02-23	REVISED PER SITE PLAN CONTROL COMMENTS
5.	2021-02-08	STRUCTURAL REVIEW
4.	2020-11-04	SITE PLAN CONTROL
3.	2020-09-14	COORDINATION
2.	2020-07-22	REVISED REAR YARD EXIT PATH
1.	2020-07-17	COORDINATION



1 AZ.4 SOUTH ELEVATION  
SCALE: 1/4" = 1'-0"

**KEY TO MATERIALS**  
TO BE READ WITH THE ATTACHED EXTERIOR FINISH SCHEDULE

- 1 BRICK VENEER  
COLOUR: CAVENDISH 2  
SIZE: 8" X 16"  
MORTAR COLOUR TO MATCH
- 1a BRICK VENEER (RECESSED 1/2")  
COLOUR: CAVENDISH 2  
SIZE: 8" X 16"  
MORTAR COLOUR TO MATCH
- 2a SHOULDRICE STONE CORNICE  
COLOUR: GREY  
SIZE: 24" X 12"  
MORTAR COLOUR TO MATCH
- 2b SHOULDRICE STONE HEADER  
COLOUR: GREY  
SIZE: 24" X 12"  
MORTAR COLOUR TO MATCH
- 2c SHOULDRICE 1/4" SLOPED STONE SILL  
COLOUR: GREY  
SIZE: 24" X 3/4"  
MORTAR COLOUR TO MATCH
- 3a HARDIE LAP SIDING  
TEXTURE: SMOOTH  
COLOUR: TBD (GREY)
- 3b HARDIE BATTEN TRIM  
TEXTURE: SMOOTH  
COLOUR: TBD (GREY)
- 4 ALUMINUM CLAD VINYL WINDOWS  
COLOUR: BLACK
- 5 ALUMINUM STORE FRONT ENTRY DOOR  
COLOUR: BLACK
- 6 PREFINISHED 22ga METAL  
COLOUR: BLACK  
SEE DETAILS FOR PROFILES
- 7a PREFINISHED 22ga METAL CAP FLASHING  
COLOUR: TBD (TO MATCH STONE)  
SEE DETAILS FOR PROFILES
- 7b PREFINISHED 22ga METAL CAP FLASHING AND CORNICE  
COLOUR: TBD (TO MATCH SIDING)  
SEE DETAILS FOR PROFILES
- 7c OVERFLOW SCUPPER  
COLOUR: TBD (TO MATCH SIDING)
- 8a WOOD LOOK ALUMINUM VENTED SOFFIT  
COLOUR: CEDAR
- 8b ALUMINUM VENTED SOFFIT  
COLOUR: BLACK
- 9 PRESTIGE PVC COLUMN CLADDING  
COLOUR: BLACK
- 10 ALUMINUM BALCONY GUARD  
COLOUR: BLACK  
ENGINEERED DRAWINGS TO BE PROVIDED TO BUILDING INSPECTOR
- 11 DECORATIVE CANOPY BRACKET  
COLOUR: BLACK  
SEE DETAILS
- 12 SECTIONAL STEEL GARAGE DOOR  
COLOUR: GREY
- 13 STEEL EXIT DOOR  
COLOUR: BLACK
- 14 CEMENT PARKING
- 15 CANFORM TAY 10L30MK 2LT  
6W TYPE A, 4.5" W x 20" H x 5.75" D
- 16 LITHONIA M/WELED EXT WALL PACK  
LED 400K

It is the responsibility of the appropriate contractor to check & verify all dimensions on site and report all errors &/or omissions to the architect. All contractors must comply with all pertinent codes & by-laws, & use proprietary products as directed by the manufacturer. Do not scale drawings. This drawing may not be used for construction until issued as such. Copyright reserved.



**KEEL APARTMENTS**  
3368 Carling Ave, Ottawa, ON, K2H 5A8

**SOUTH ELEVATION**

Drawn By: XX	Date: JULY 2020	A2.4
Project No: 1917	Scale: 1/4" = 1'-0"	