

OWNER:
 NIVO DEVELOPMENTS INC.
 255 MICHAEL COMPLAND DRIVE
 OTTAWA, ONTARIO, K2M 0M5
 613-224-6200

REFER TO DRAWING C-1 AND NOTES &
 DETAILS ON DRAWINGS C-7 & C-8

DRAWING LEGEND

- CB CATCH BASIN
- MH MANHOLE
- CB/MH CATCH BASIN/MANHOLE
- MH SANITARY MANHOLE
- SPL SPRINGLINE OF PIPE
- INV INVERT OF PIPE
- SAN SANITARY SEWER
- ST STORM SEWER
- WS/WM WATER SERVICE/WATERMAIN
- CS CURB STOP & STANDPOST
- VB VALVE & VALVE BOX
- FH FIRE HYDRANT
- WM WATER METER
- RM REMOTE WATER METER READOUT
- EG EXISTING GRADE ELEVATION
- PR PROPERTY LINE
- FFL FIRST FLOOR ELEVATION
- TOP TOP OF FOUNDATION
- BFL BASEMENT FLOOR ELEVATION
- USF UNDERSIDE OF FOOTING

KEY PLAN

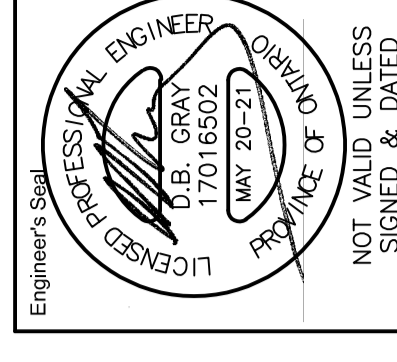


No.	DATE	REVISION
7	MAY 20-21	RE-ISSUED FOR APPROVAL
6	MAR 15-21	RE-ISSUED FOR APPROVAL
5	NOV 16-20	RE-ISSUED FOR APPROVAL
4	JUN 18-20	RE-ISSUED FOR APPROVAL
3	SEP 27-19	RE-ISSUED FOR APPROVAL
2	AUG 9-19	ISSUED FOR APPROVAL
1	JUN 14-19	PRELIMINARY

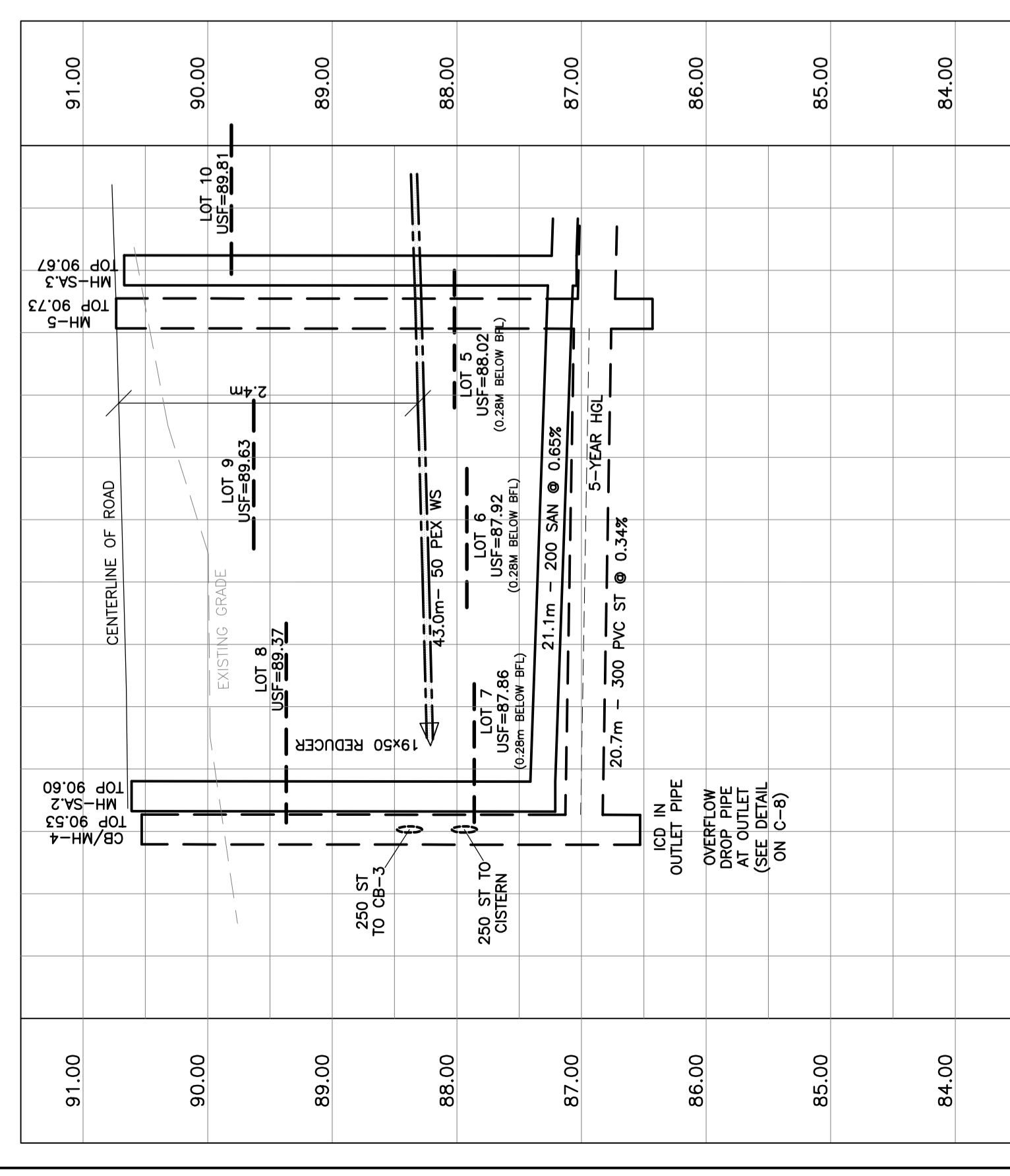
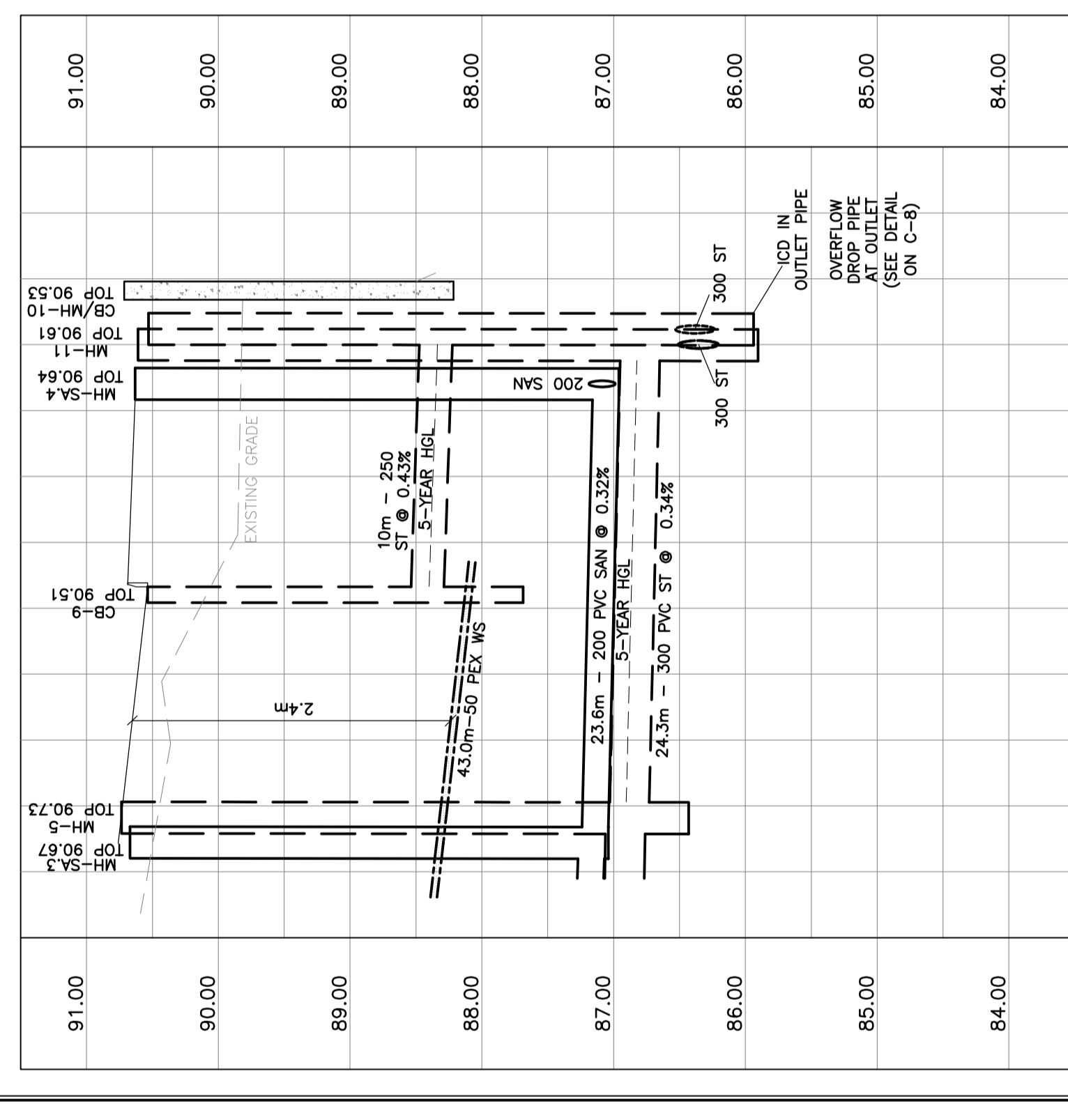
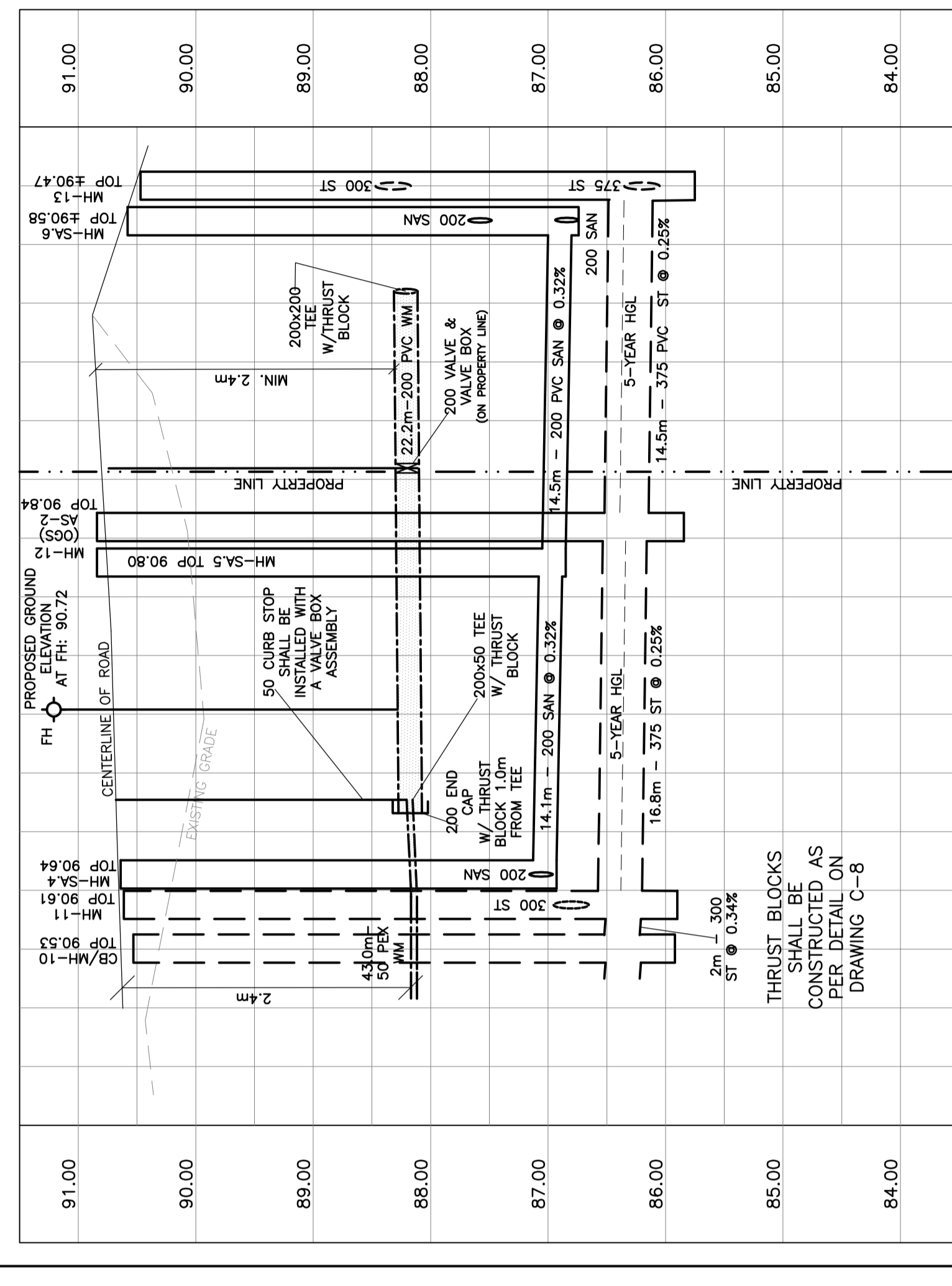
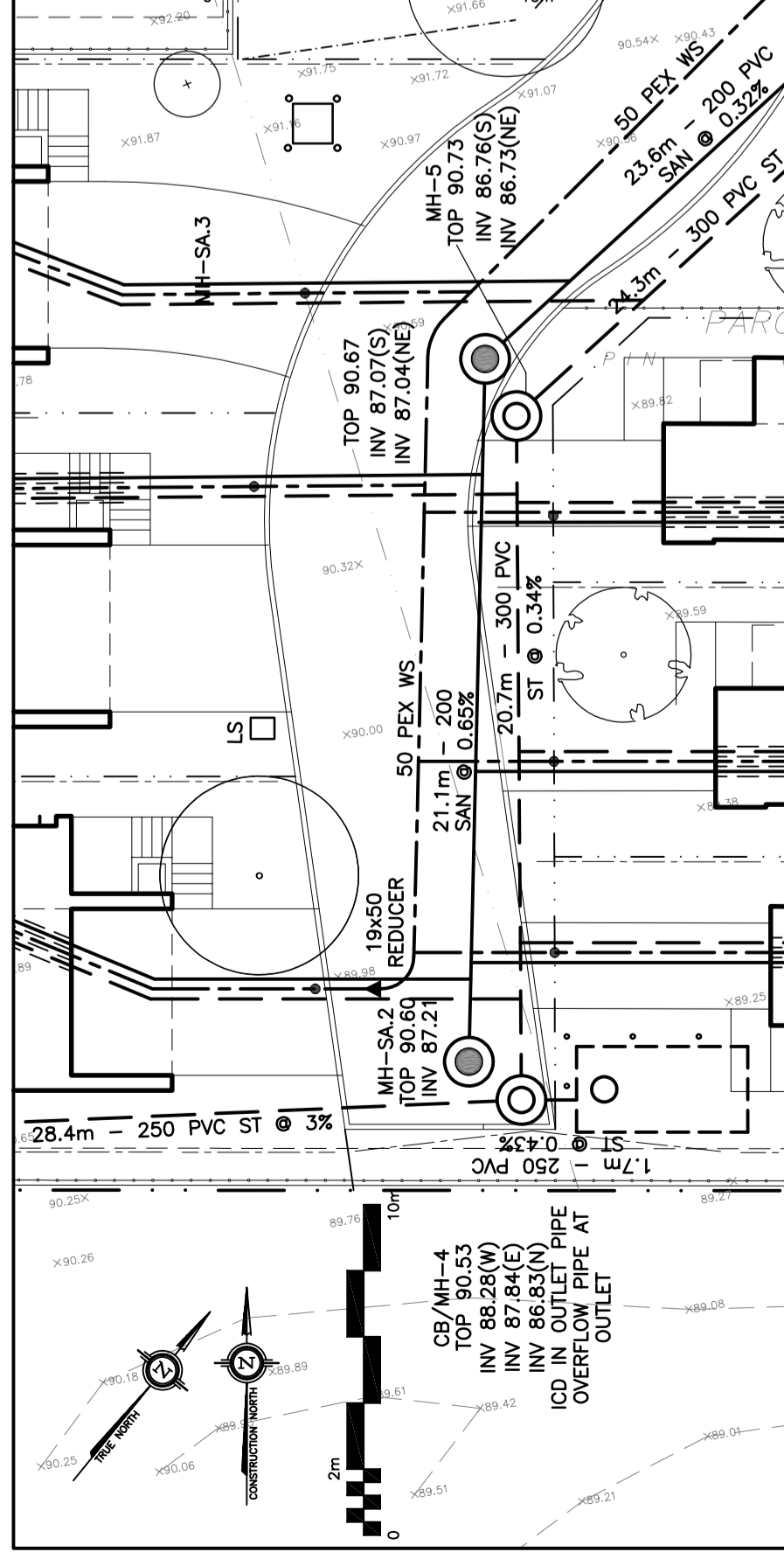
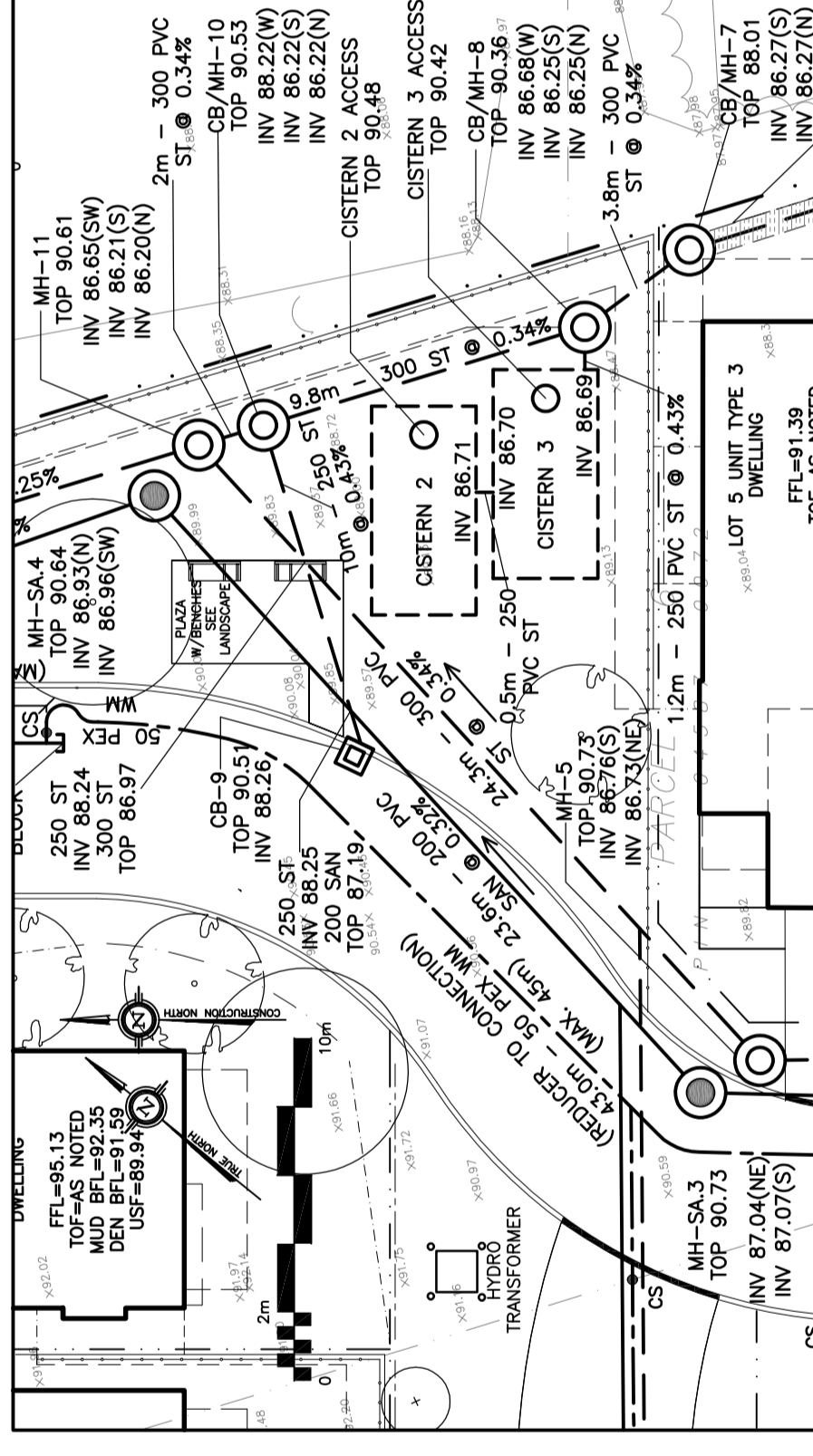
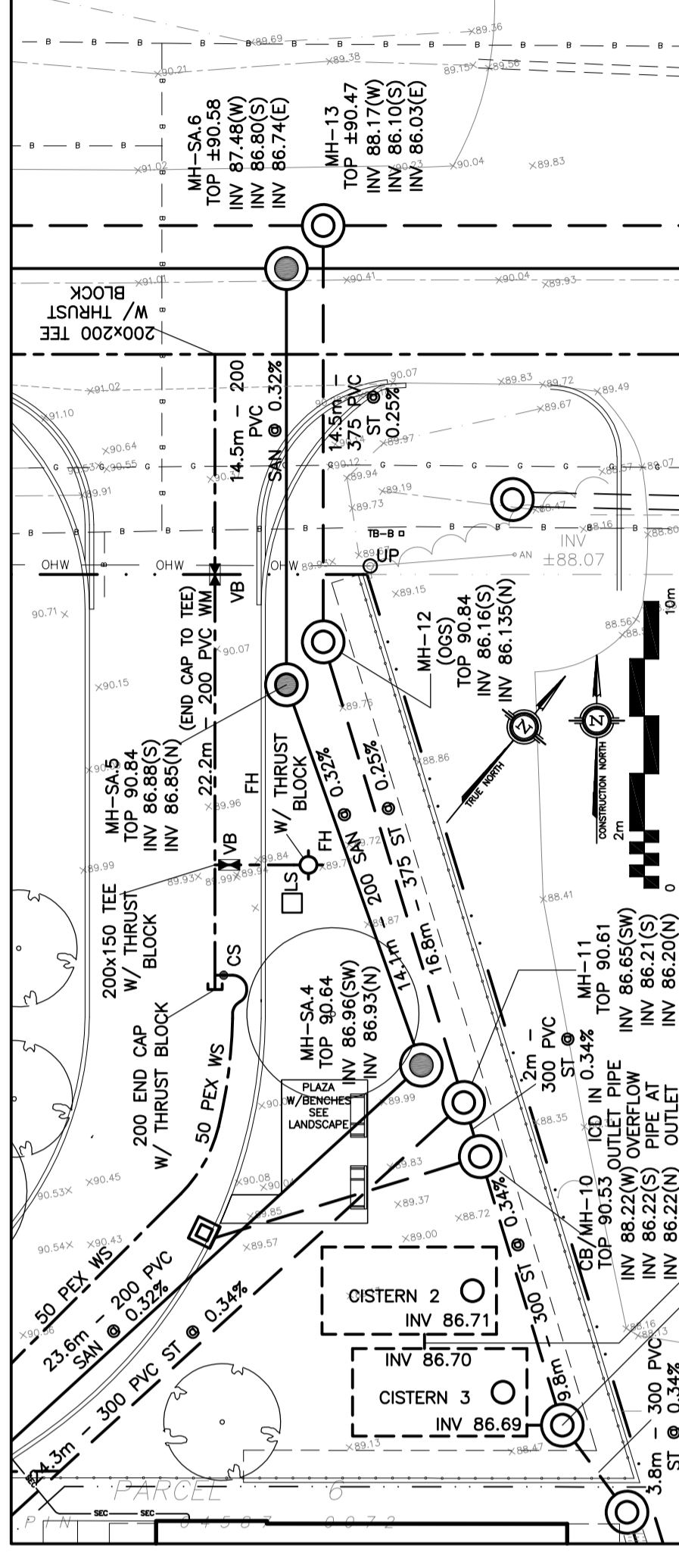
D. B. GRAY ENGINEERING INC.
 700 Long Point Circle
 Ottawa, Ontario
 613-425-8044
 dgray@dbgrayengineering.com

**PROPOSED
 RESIDENTIAL DEVELOPMENT
 1164-1166 HIGHCROFT DR.
 MANOTICK, ONTARIO**

**PLAN & PROFILE
 PRIVATE ROAD**



Drawn: D.B.G.
 Hor. Scale: 1:200
 Vert. Scale: 1:40
 Date: JUN 14-19
 Job No.: 180335
 Drawing No.: **C-13**
 of 14
 NOT VALID UNLESS
 SIGNED & DATED



STATION FROM MH 1.3	STATION TO MH 1.3	ST INVERT	TOP OF WM	C/L OF ROAD
B+00.5	B+01.5	INV 86.10(S) INV 86.74(E) INV 87.48(W) INV 88.17(M) INV 88.03(E)	88.31	90.76
B+01.4	B+01.6	INV 86.13(S) INV 86.16(S)	88.31	90.72
B+02.3	B+03.6	INV 86.22(N) INV 86.22(S) INV 86.22(N) INV 86.22(S) INV 86.22(N) INV 86.22(S)	88.22	90.62
B+03.0	B+03.6	INV 86.22(N) INV 86.22(S) INV 86.22(N) INV 86.22(S)	88.22	90.62
B+03.5	B+03.6	INV 86.22(N) INV 86.22(S) INV 86.22(N) INV 86.22(S)	88.22	90.62
B+04.0	B+04.0	INV 86.28	88.22	90.62
B+05.0	B+05.0	INV 86.76(S) INV 87.07(S) INV 87.04(N) INV 86.73(N)	88.36	90.76
B+05.15	B+05.0	INV 86.76(S) INV 87.07(S) INV 87.04(N) INV 86.73(N)	88.34	90.74
B+07.0	B+07.0	INV 87.21	88.24	90.64
B+07.5	B+07.5	INV 88.28(N) INV 87.84(E) INV 86.73(N)	88.24	90.64
B+07.9	B+07.9	INV 86.83(N) INV 86.83(N)	88.24	90.64
B+08.0	B+08.0	INV 86.83(N) INV 86.83(N)	88.24	90.64
B+08.2	B+08.2	INV 86.76(S) INV 87.07(S) INV 87.04(N) INV 86.73(N)	88.32	90.72
B+08.3	B+08.3	INV 86.76(S) INV 87.07(S) INV 87.04(N) INV 86.73(N)	88.32	90.72
B+08.4	B+08.4	INV 86.76(S) INV 87.07(S) INV 87.04(N) INV 86.73(N)	88.36	90.76
B+08.5	B+08.5	INV 86.76(S) INV 87.07(S) INV 87.04(N) INV 86.73(N)	88.36	90.76
B+08.6	B+08.6	INV 86.76(S) INV 87.07(S) INV 87.04(N) INV 86.73(N)	88.36	90.76
B+08.7	B+08.7	INV 86.76(S) INV 87.07(S) INV 87.04(N) INV 86.73(N)	88.36	90.76
B+08.8	B+08.8	INV 86.76(S) INV 87.07(S) INV 87.04(N) INV 86.73(N)	88.36	90.76
B+08.9	B+08.9	INV 86.76(S) INV 87.07(S) INV 87.04(N) INV 86.73(N)	88.36	90.76
B+09.0	B+09.0	INV 86.76(S) INV 87.07(S) INV 87.04(N) INV 86.73(N)	88.36	90.76
B+09.1	B+09.1	INV 86.76(S) INV 87.07(S) INV 87.04(N) INV 86.73(N)	88.36	90.76
B+09.2	B+09.2	INV 86.76(S) INV 87.07(S) INV 87.04(N) INV 86.73(N)	88.36	90.76
B+09.3	B+09.3	INV 86.76(S) INV 87.07(S) INV 87.04(N) INV 86.73(N)	88.36	90.76
B+09.4	B+09.4	INV 86.76(S) INV 87.07(S) INV 87.04(N) INV 86.73(N)	88.36	90.76
B+09.5	B+09.5	INV 86.76(S) INV 87.07(S) INV 87.04(N) INV 86.73(N)	88.36	90.76
B+09.6	B+09.6	INV 86.76(S) INV 87.07(S) INV 87.04(N) INV 86.73(N)	88.36	90.76
B+09.7	B+09.7	INV 86.76(S) INV 87.07(S) INV 87.04(N) INV 86.73(N)	88.36	90.76
B+09.8	B+09.8	INV 86.76(S) INV 87.07(S) INV 87.04(N) INV 86.73(N)	88.36	90.76
B+09.9	B+09.9	INV 86.76(S) INV 87.07(S) INV 87.04(N) INV 86.73(N)	88.36	90.76
B+10.0	B+10.0	INV 86.76(S) INV 87.07(S) INV 87.04(N) INV 86.73(N)	88.36	90.76

STATION FROM MH 1.3	STATION TO MH 1.3	ST INVERT	TOP OF WM	C/L OF ROAD
B+00.5	B+01.5	INV 86.10(S) INV 86.74(E) INV 87.48(W) INV 88.17(M) INV 88.03(E)	88.31	90.76
B+01.4	B+01.6	INV 86.13(S) INV 86.16(S)	88.31	90.72
B+02.3	B+03.6	INV 86.22(N) INV 86.22(S) INV 86.22(N) INV 86.22(S) INV 86.22(N) INV 86.22(S)	88.22	90.62
B+03.0	B+03.6	INV 86.22(N) INV 86.22(S) INV 86.22(N) INV 86.22(S)	88.22	90.62
B+03.5	B+03.6	INV 86.22(N) INV 86.22(S) INV 86.22(N) INV 86.22(S)	88.22	90.62
B+04.0	B+04.0	INV 86.28	88.22	90.62
B+05.0	B+05.0	INV 86.76(S) INV 87.07(S) INV 87.04(N) INV 86.73(N)	88.36	90.76
B+05.15	B+05.0	INV 86.76(S) INV 87.07(S) INV 87.04(N) INV 86.73(N)	88.34	90.74
B+07.0	B+07.0	INV 87.21	88.24	90.64
B+07.5	B+07.5	INV 88.28(N) INV 87.84(E) INV 86.73(N)	88.24	90.64
B+07.9	B+07.9	INV 86.83(N) INV 86.83(N)	88.24	90.64
B+08.0	B+08.0	INV 86.83(N) INV 86.83(N)	88.24	90.64
B+08.2	B+08.2	INV 86.76(S) INV 87.07(S) INV 87.04(N) INV 86.73(N)	88.32	90.72
B+08.3	B+08.3	INV 86.76(S) INV 87.07(S) INV 87.04(N) INV 86.73(N)	88.32	90.72
B+08.4	B+08.4	INV 86.76(S) INV 87.07(S) INV 87.04(N) INV 86.73(N)	88.36	90.76
B+08.5	B+08.5	INV 86.76(S) INV 87.07(S) INV 87.04(N) INV 86.73(N)	88.36	90.76
B+08.6	B+08.6	INV 86.76(S) INV 87.07(S) INV 87.04(N) INV 86.73(N)	88.36	90.76
B+08.7	B+08.7	INV 86.76(S) INV 87.07(S) INV 87.04(N) INV 86.73(N)	88.36	90.76
B+08.8	B+08.8	INV 86.76(S) INV 87.07(S) INV 87.04(N) INV 86.73(N)	88.36	90.76
B+08.9	B+08.9	INV 86.76(S) INV 87.07(S) INV 87.04(N) INV 86.73(N)	88.36	90.76
B+09.0	B+09.0	INV 86.76(S) INV 87.07(S) INV 87.04(N) INV 86.73(N)	88.36	90.76
B+09.1	B+09.1	INV 86.76(S) INV 87.07(S) INV 87.04(N) INV 86.73(N)	88.36	90.76
B+09.2	B+09.2	INV 86.76(S) INV 87.07(S) INV 87.04(N) INV 86.73(N)	88.36	90.76
B+09.3	B+09.3	INV 86.76(S) INV 87.07(S) INV 87.04(N) INV 86.73(N)	88.36	90.76
B+09.4	B+09.4	INV 86.76(S) INV 87.07(S) INV 87.04(N) INV 86.73(N)	88.36	90.76
B+09.5	B+09.5	INV 86.76(S) INV 87.07(S) INV 87.04(N) INV 86.73(N)	88.36	90.76
B+09.6	B+09.6	INV 86.76(S) INV 87.07(S) INV 87.04(N) INV 86.73(N)	88.36	90.76
B+09.7	B+09.7	INV 86.76(S) INV 87.07(S) INV 87.04(N) INV 86.73(N)	88.36	90.76
B+09.8	B+09.8	INV 86.76(S) INV 87.07(S) INV 87.04(N) INV 86.73(N)	88.36	90.76
B+09.9	B+09.9	INV 86.76(S) INV 87.07(S) INV 87.04(N) INV 86.73(N)	88.36	90.76
B+10.0	B+10.0	INV 86.76(S) INV 87.07(S) INV 87.04(N) INV 86.73(N)	88.36	90.76

STATION FROM CB/MH 4	STATION TO MH 1.3	ST INVERT	TOP OF WM	C/L OF ROAD
B+073.9	B+073.9	INV 88.28(N) INV 87.84(E) INV 86.73(N)	88.24	90.64
B+075.5	B+075.5	INV 87.21	88.24	90.64
B+077.0	B+077.0	INV 86.83(N) INV 86.83(N)	88.24	90.64
B+079.0	B+079.0	INV 86.83(N) INV 86.83(N)	88.24	90.64
B+080.0	B+080.0	INV 86.83(N) INV 86.83(N)	88.24	90.64
B+081.0	B+081.0	INV 86.83(N) INV 86.83(N)	88.24	90.64
B+082.0	B+082.0	INV 86.83(N) INV 86.83(N)	88.24	90.64
B+083.0	B+083.0	INV 86.83(N) INV 86.83(N)	88.24	90.64
B+084.0	B+084.0	INV 86.83(N) INV 86.83(N)	88.24	90.64
B+085.0	B+085.0	INV 86.83(N) INV 86.83(N)	88.24	90.64
B+086.0	B+086.0	INV 86.83(N) INV 86.83(N)	88.24	90.64
B+087.0	B+087.0	INV 86.83(N) INV 86.83(N)	88.24	90.64
B+088.0	B+088.0	INV 86.83(N) INV 86.83(N)	88.24	90.64
B+089.0	B+089.0	INV 86.83(N) INV 86.83(N)	88.24	90.64
B+090.0	B+090.0	INV 86.83(N) INV 86.83(N)	88.24	90.64
B+091.0	B+091.0	INV 86.83(N) INV 86.83(N)	88.24	90.64
B+092.0	B+092.0	INV 86.83(N) INV 86.83(N)	88.24	90.64
B+093.0	B+093.0	INV 86.83(N) INV 86.83(N)	88.24	90.64
B+094.0	B+094.0	INV 86.83(N) INV 86.83(N)	88.24	90.64
B+095.0	B+095.0	INV 86.83(N) INV 86.83(N)	88.24	90.64
B+096.0	B+096.0	INV 86.83(N) INV 86.83(N)	88.24	90.64
B+097.0	B+097.0	INV 86.83(N) INV 86.83(N)	88.24	90.64
B+098.0	B+098.0	INV 86.83(N) INV 86.83(N)	88.24	90.64
B+099.0	B+099.0	INV 86.83(N) INV 86.83(N)	88.24	90.64
B+100.0	B+100.0	INV 86.83(N) INV 86.83(N)	88.24	90.64