

LOT 11 CONCESSION 4 (MARCH)

PART 2 PLAN 5R - 14145  
3.01 ROAD WIDENING

**SURVEYOR'S REAL PROPERTY REPORT**  
**PART 1** Plan of  
**PART OF LOT 10 CONCESSION 4**  
**GEOGRAPHIC TOWNSHIP OF MARCH**  
**CITY OF OTTAWA**  
 Surveyed by Annis, O'Sullivan, Vollebek Ltd.  
 Plan Amended on September 28, 2020 to Show Center Line of  
 Constructed Road on Klondike Road & Sandhill Road.  
 Plan amended on October 8, 2020 to remove storm, sanitary and water  
 services on Klondike road west of Sandhill Road.

Scale 1 : 150  
 6 4.5 3.0 1.5 0 3 6 Metres

Metric  
 DISTANCES SHOWN ON THIS PLAN ARE IN METRES AND  
 CAN BE CONVERTED TO FEET BY DIVIDING BY 0.3048

**Surveyor's Certificate**  
 I CERTIFY THAT:  
 1. This survey and plan are correct and in accordance with the Surveys  
 Act and the Surveyors Act and the regulations made under them.  
 2. The survey was completed on the 14th day of September, 2020.

Sept 21 2020  
 Date  
 E. H. Herweyer  
 Ontario Land Surveyor

**PART 2**  
 THIS PLAN MUST BE READ IN CONJUNCTION WITH  
 SURVEY REPORT DATED: September 21, 2020

ANNIS, O'SULLIVAN, VOLLEBEK LTD. grants to  
 L. Ashier ("The Client"), their solicitors,  
 mortgages, and other related parties, permission to use original, signed, sealed  
 copies of the Surveyor's Real Property Report in transactions involving The Client.

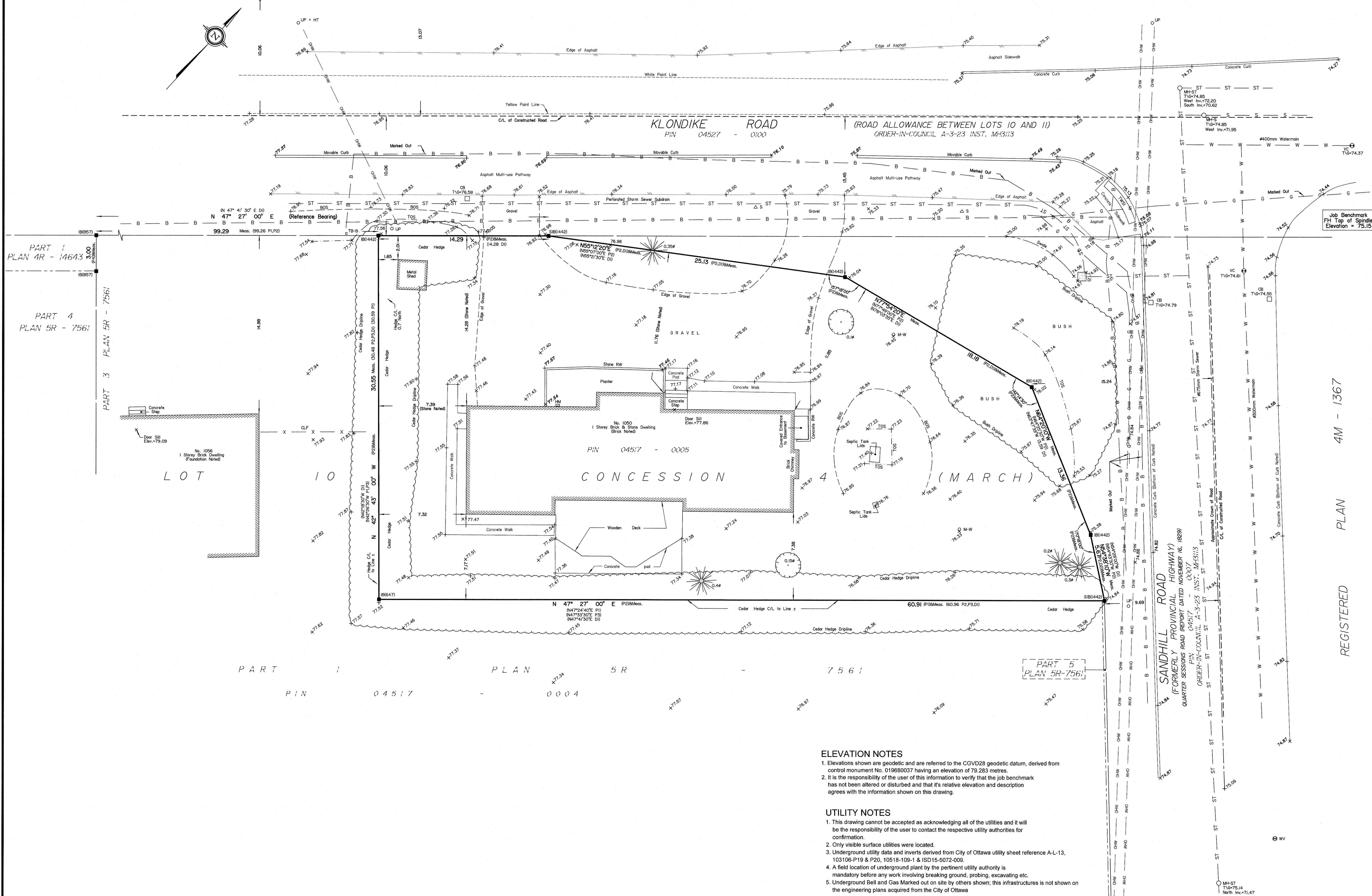
**Notes & Legend**

Denotes	
—○—	Survey Monument Planted
—■—	Survey Monument Found
SB	Standard Iron Bar
SSIB	Short Standard Iron Bar
—	Iron Bar
(WIT)	Witness
Meas.	Measured
(AOG)	Annis, O'Sullivan, Vollebek Ltd.
(P1)	Plan 5R-7561
(P2)	(1442) Plan August 10, 1989
(P3)	Plan 5R-6127
(P4)	Plan 4R-14643
DI	Inst. N499485
⊙	Deciduous Tree
⊙*	Coniferous Tree
⊙FH	Fire Hydrant
⊙WV	Water Valve
⊙MH-ST	Maintenance Hole (Storm Sewer)
⊙MH-S	Maintenance Hole (Sanitary)
⊙VC	Valve Chamber (Watermain)
—S—	Underground Sanitary Sewer
—ST—	Underground Storm Sewer
—W—	Underground Water
—G—	Underground Gas
—OHW—	Overhead Wires
—B—	Bell
⊙CB	Catch Basin
⊙DI	Ditch Inlet
⊙HM	Hydro Meter
⊙TB-B	Bell Terminal Box
—CLF—	Chain Link Fence
+65.00	Location of Elevations
65.00	Top of Concrete Curb / RW Elevation
—C/L—	Centreline
—RW—	Retaining Wall
—HT—	Hydro Transformer
—TWSI—	Tactile Walking Surface Indicator
⊙M-W	Monitoring Well

Bearings are grid, derived from Can-Net 2016 Real Time Network  
 GPS observations, MTM Zone 9 ( 76°30' West Longitude ) NAD-83  
 (original).  
 For bearing comparisons, a rotation of 0°25'00" counter-clockwise  
 was applied to bearings on P1, P2 & P3.

ASSOCIATION OF ONTARIO  
 LAND SURVEYORS  
 PLAN SUBMISSION FORM  
 2136354  
 THIS PLAN IS NOT VALID UNLESS  
 IT IS AN EMBOSSED ORIGINAL  
 COPY ISSUED BY THE SURVEYOR  
 In accordance with  
 Regulation 1026, Section 29 (3).

Annis, O'Sullivan, Vollebek Ltd. 2020. THIS PLAN IS PROTECTED BY COPYRIGHT.  
**ANNIS, O'SULLIVAN, VOLLEBEK LTD.**  
 14 Concourse Gate, Suite 500  
 Nepean, Ont. K2E 7S9  
 Phone: (613) 727-0850 / Fax: (613) 727-1079  
 Email: Nepean@avoll.com



**ELEVATION NOTES**

- Elevations shown are geodetic and are referred to the CGVD28 geodetic datum, derived from control monument No. 019680037 having an elevation of 79.283 metres.
- It is the responsibility of the user of this information to verify that the job benchmark has not been altered or disturbed and that its relative elevation and description agrees with the information shown on this drawing.

**UTILITY NOTES**

- This drawing cannot be accepted as acknowledging all of the utilities and it will be the responsibility of the user to contact the respective utility authorities for confirmation.
- Only visible surface utilities were located.
- Underground utility data and inverts derived from City of Ottawa utility sheet reference A-L-13, 103106-P19 & P20, 10518-109-1 & ISD15-5072-009.
- A field location of underground plant by the pertinent utility authority is mandatory before any work involving breaking ground, probing, excavating etc.
- Underground Bell and Gas Marked out on site by others shown, this infrastructures is not shown on the engineering plans acquired from the City of Ottawa

REGISTERED PLAN 4M - 1367

PART 1 PLAN 4R - 14643  
 PART 4 PLAN 5R - 7561  
 PART 3 PLAN 5R - 7561

PART 1 PLAN 5R - 14145  
 PIN 04517 - 0004

PART 5 PLAN 5R-7561