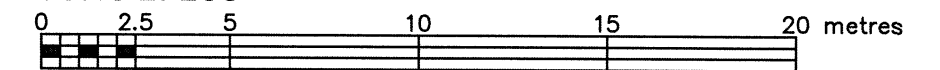


LOT 5 (WEST O'CONNOR STREET) & LOT 41 (NORTH SOMERSET STREET) REGISTERED PLAN 12281 CITY OF OTTAWA

FARLEY, SMITH & DENIS SURVEYING LTD. 2020

Scale 1: 200



Metric Note

Distances and coordinates on this plan are in metres and can be converted to feet by dividing by 0.3048.

Distance Note

Distances shown on this plan are ground distances and can be converted to grid distances by multiplying by the combined scale factor of 0.99994.

Bearing Note

Bearings are grid, referred to the northerly limit of Somerset Street having a bearing of N 59° 00' 55" E as shown on P2 and are referred to the Central Meridian of MTM Zone 9 (76°30' West Longitude) Nad-83 (Original).

Elevation Notes

- 1. Elevations shown are geodetic and are referred to Geodetic Datum CGVD-1928 :1978.
2. It is the responsibility of the user of this information to verify that the job benchmark has not been altered or disturbed and that its relative elevation and description agrees with the information shown on this drawing.

Utility Notes

- 1. This drawing cannot be accepted as acknowledging all of the utilities and it will be the responsibility of the user to contact the respective utility authorities for confirmation.
2. Only visible surface utilities were located.
3. Underground utility data derived from City of Ottawa utility sheet reference: E-12-14, E-12-18, E-12-19, 1526p&p2, 1985p&p1, 1985p&p2, 10261p&p1 & 13564p&p2 13564p&p03.
4. Sanitary and storm sewer grades and inverts were compiled from: City of Ottawa underground utility sheets.
5. A field location of underground plant by the pertinent utility authority is mandatory before any work involving breaking ground, probing, excavating etc.

Notes & Legend

Table with 3 columns: Symbol, Description, and Additional Notes. Includes symbols for monuments, utilities, and trees.

WARNING NO PERSON MAY COPY, REPRODUCE, DISTRIBUTE OR ALTER THIS PLAN IN WHOLE OR IN PART WITHOUT THE WRITTEN PERMISSION OF FARLEY, SMITH & DENIS SURVEYING LTD.

Surveyor's Certificate

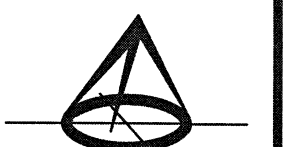
- 1. This survey and plan are correct and in accordance with the Surveys Act, the Surveyors Act and the Regulations made under them.
2. The survey was completed on the 22nd day of October, 2020.

Date: 10/22/20

Daniel Robinson, Ontario Land Surveyor

ASSOCIATION OF ONTARIO LAND SURVEYORS PLAN SUBMISSION FORM

2139123



THIS PLAN IS NOT VALID UNLESS IT IS AN EMBOSSED ORIGINAL COPY ISSUED BY THE SURVEYOR

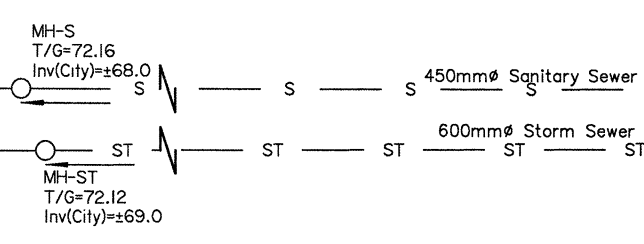
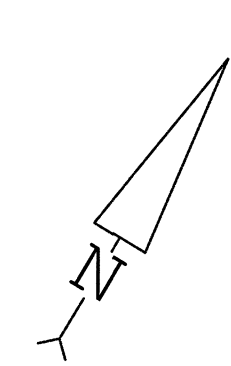
FARLEY, SMITH & DENIS SURVEYING LTD.

ONTARIO LAND SURVEYORS CANADA LAND SURVEYORS

190 COLONNADE ROAD, OTTAWA, ONTARIO K2E 7J5 TEL. (613) 727-8226 FAX. (613) 727-1826

FILE No.: 509-20

Note: For clarity, no abandoned utilities have been shown on this plan. Refer to City of Ottawa Utility Plans: E-12-14, E-12-18, E-12-19, 1526p&p2, 1985p&p1, 1985p&p2, 10261p&p1 & 13564p&p02 13564p&p03.



TOPO 18X24