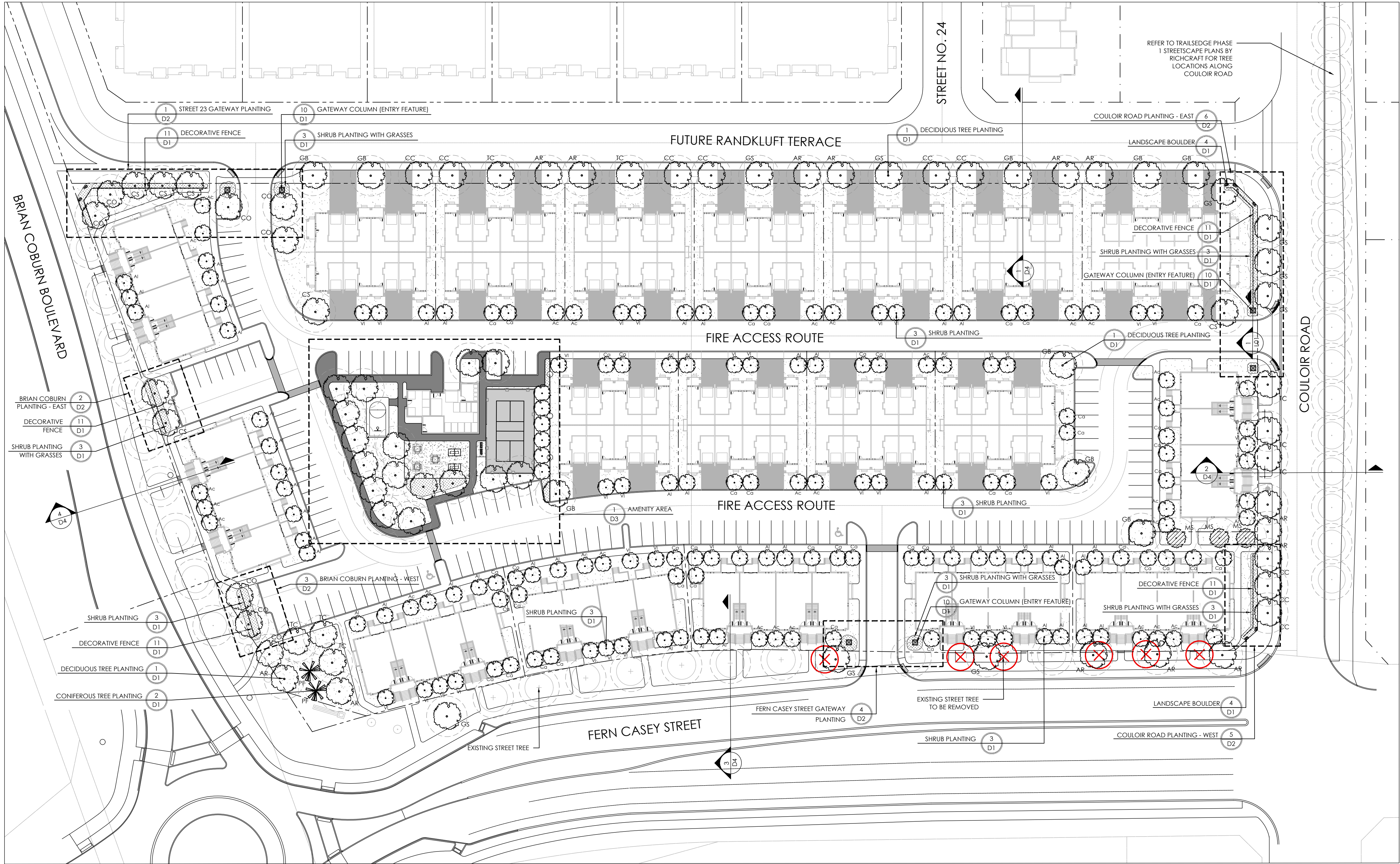
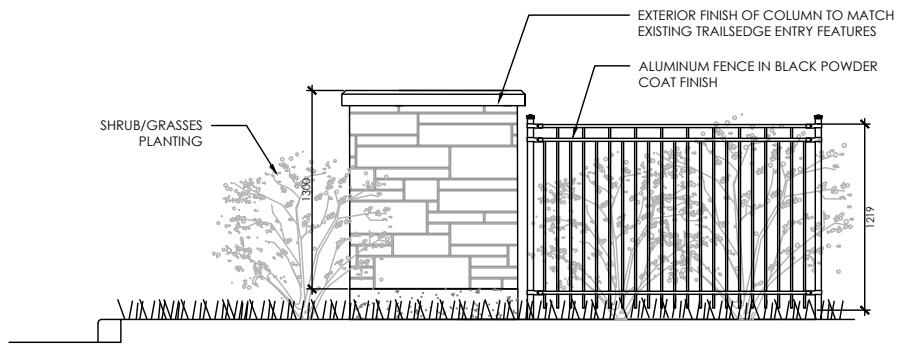


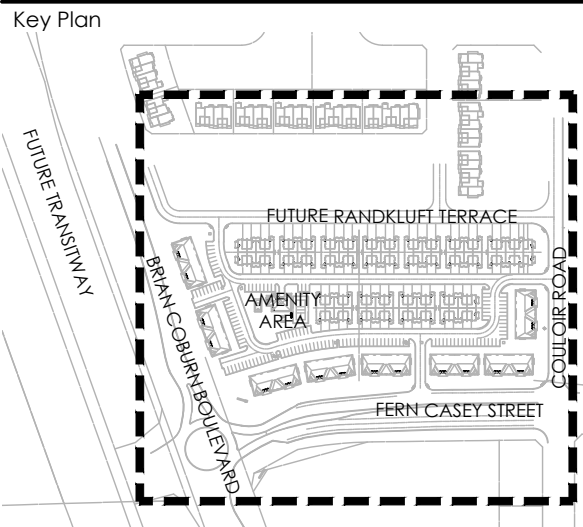
THIS PLAN IS FOR APPROVAL AND TENDERING PURPOSES ONLY. NOT FOR CONSTRUCTION. THIS PLAN SHALL BE READ IN CONJUNCTION WITH DRAWINGS PREPARED BY HYDRO OTTAWA, BELL CANADA, ROGERS CABLE AND ENBRIDGE GAS. THE CITY OF OTTAWA STANDARDS SHALL GOVERN OVER THIS DRAWING.



1 SECTION - GATEWAY COLUMN FEATURE  
N.T.S.

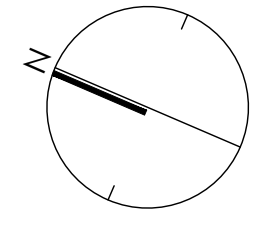


Contractor shall check all dimensions on the work and report any discrepancy to the Landscape Architect before proceeding. All drawings and specifications are the property of the Landscape Architect and must be returned at the completion of the work. This drawing is not to be used for construction until signed by the Landscape Architect.



LEGEND	
FENCING	PROPERTY LINE
DECORATIVE FENCE	
GATEWAY COLUMN	
PLANTING	
EXISTING STREET TREE	
EXISTING STREET TREE TO BE REMOVED	
ROW TREE	
MEDIUM DECIDUOUS TREE (7.5m TO 14m HEIGHT)	
SMALL TREE (<7.5m HEIGHT)	
SHRUB (TREE FORM)	
CONIFEROUS STREET TREE	
LANDSCAPE BOULDER	
SODDING	
PLANTING BED	
SURFACING	
C.I.P. CONCRETE	
ASPHALT PAVING	
PICKLEBALL COURT SURFACE	
AMENITIES	
UMBRELLA SHADE SHELTER	
CONCRETE PING PONG TABLE	
BASKETBALL KEY AND HOOP	

No.	Description	Date
5	Issued for 2nd Submission	Apr. 23/21
4	Re-issued for 1st Submission with Cross Sections	Jan. 27/21
3	Issued for 1st Submission	Dec. 14/20
2	Issued for Client Review	Nov. 20/20
1	Issued for Client Review	Aug. 12/20
Revision		
City Approval Stamp		



**NAK**  
design strategies

1285 WELLINGTON STREET WEST, OTTAWA, ON K1Y 3A8 CANADA  
T 613.237.3345 F 613.237.4423 NAKDESIGNSTRATEGIES.COM

TRAILSEGE RENTAL BLOCKS  
193 & 194 SITE PLAN  
OTTAWA, ON

Title  
LANDSCAPE PLAN

Date APRIL 2021  
Scale 1:500  
Drawn is  
Checked jh  
Job No. 20-135  
Sheet  
L01

- GENERAL NOTES:**
- CELTS OCCIDENTALIS TO BE SPRING DIG SPECIMENS AND PLANTED IN THE SPRING ONLY.
  - THE LOCATION OF THE TREES SHOWN ON THIS PLAN IS APPROXIMATE AND SHALL NOT BE SCALED FROM THIS DRAWING. THIS PLAN MUST BE READ IN CONJUNCTION WITH THE APPROVED CUP, GRADING AND SITE PLAN.
  - CONTRACTOR SHALL ENSURE THAT ALL UTILITY LOCATIONS ARE OBTAINED PRIOR TO ANY EXCAVATION FOR LANDSCAPING.
  - LOCATION OF ALL PLANT MATERIALS TO BE STAKED BY THE CONTRACTOR AND VERIFIED IN THE FIELD BY LANDSCAPE ARCHITECT PRIOR TO THE EXCAVATION OF PITS.
  - ALL PLANT MATERIAL SHALL BE NURSERY GROWN STOCK UNLESS OTHERWISE NOTED.
  - TREES TO HAVE A MINIMUM 1800 CLEAR STEM ABOVE GRADE.
  - PLACE SOD ON A MINIMUM 150mm TOPSOIL.
  - CONTRACTOR TO MAKE GOOD ALL EXISTING AREAS DAMAGED BY HIS WORK TO THE SATISFACTION OF THE CITY OF OTTAWA.
  - THE CITY WILL BE NOTIFIED IF ANY TREES CANNOT BE LOCATED OR PLANTED DUE TO CONFLICTS WITH UTILITIES OR DRIVEWAYS. THE REQUIRED TREES NOT PLANTED ARE SUBJECT TO TREE BANKING. THE FINAL NUMBER OF TREES TO BE BANKED WILL BE PROVIDED TO THE CITY FOLLOWING ALL PLANTINGS.
  - ALL PLANT MATERIAL SHALL BE WARRANTIED FOR TWO YEARS FROM THE DATE OF SUBSTANTIAL PERFORMANCE AS DETERMINED BY THE CITY OF OTTAWA.

- PERIODIC REVIEWS OF PLANTING SHALL BE CARRIED OUT BY THE LANDSCAPE ARCHITECT.
- PLANTINGS TO BE STAKED FOR APPROVAL PRIOR TO CONSTRUCTION
- CITY GRASS CUTTING RESPONSIBILITIES FOR SODDED AREAS SHALL BEGIN FOLLOWING PERFORMANCE ACCEPTANCE INSPECTION BY THE LANDSCAPE ARCHITECT AND THE CITY. ACCEPTANCE WILL BE PROVIDED ONLY IF:
  - SOD IS PROPERLY ESTABLISHED.
  - TURF IS FREE OF DEAD SPOTS AND WEEDS.
  - SODDED AREAS HAVE BEEN CUT WITHIN 24 HOURS PRIOR TO ACCEPTANCE
- STREET TREE PLANTING GUIDELINE  
NOTE: APPROVED CROSS SECTIONS SHALL TAKE PRECEDENCE
  - 4.5m - STREET LIGHT
  - 2.5m - STREET LIGHT (SMALL TREE <7m MATURE HT.)
  - 3.0m - HYDRO TRANSFORMER
  - 1.5m - PATH, DRIVEWAY, FENCE, SOUND WALL
  - 4.5m - CONIFERS MINIMUM SETBACK FROM CURB
  - 2.5m - FIRE HYDRANTS
  - 1.5m - WATER SERVICE / CURB STOP
  - 1.0m - BELL / CABLE PEDESTALS

#### TREE PLANTING IN MARINE CLAY SOILS

\*THE LANDSCAPE CONSIDERATIONS CONTAINED WITHIN SEC. 6.8 OF PATERSON GROUP'S GEOTECHNICAL INVESTIGATION, DATED 24 JULY 2020 HAVE BEEN IMPLEMENTED.

- THIS LANDSCAPE PLAN CONFORMS WITH THE TREE-TO-FOUNDATION SETBACK, SOIL VOLUME, AND SURFACE-GRADING REQUIREMENTS OUTLINED IN THE CITY OF OTTAWA'S GUIDELINES FOR TREE PLANTING IN SENSITIVE MARINE CLAY SOILS (2017), BASED ON THE FINDINGS OUTLINED IN THE PROJECT GEOTECHNICAL REPORT.
- ADDITIONAL REQUIREMENTS OUTLINED IN THE CITY OF OTTAWA'S GUIDELINES FOR TREE PLANTING IN SENSITIVE MARINE CLAY SOILS (2017), INCLUDING USF DEPTH, FOUNDATION WALL REINFORCEMENT, AND SUBDIVISION GRADING, SHOULD BE CONFIRMED BY THE PROJECT ENGINEER(S).
- THE CONTRACTOR SHOULD REPORT ANY DISCREPANCIES TO THE CONTRACT ADMINISTRATOR BEFORE PLANTING TREES.
- CITY OF OTTAWA'S GUIDELINES FOR TREE PLANTING IN SENSITIVE MARINE CLAY SOILS (2017): THE FOLLOWING GUIDELINES ARE PRIMARILY FOCUSED ON SMALL AND MEDIUM SIZE STREET TREES. HOWEVER, LARGE TREES (MATURE HEIGHT OVER 14M) CAN STILL BE PLANTED IN AREAS OF SMC SOILS PROVIDED A TREE TO FOUNDATION SETBACK EQUAL TO THE FULL MATURE HEIGHT OF THE TREE CAN BE PROVIDED (E.G. IN A PARK OR OTHER GREEN SPACE). FOR STREET TREES IN THE ROAD RIGHT-OF-WAY WHERE SMC SOILS HAVE BEEN IDENTIFIED, THE TREE TO FOUNDATION SETBACKS MAY BE REDUCED TO 4.5M FOR SMALL (MATURE TREE HEIGHT UP TO 7.5M) AND MEDIUM SIZE TREES (MATURE TREE HEIGHT 7.5M-14M) PROVIDED ALL OF THE FOLLOWING SIX CONDITIONS ARE MET:
  - THE MODIFIED PLASTICITY INDEX OF THE SOIL BETWEEN THE UNDERSIDE OF FOOTING (USF) AND A DEPTH OF 3.5M GENERALLY DOES NOT EXCEED 40%. THIS CORRESPONDS TO SOILS WITH LOW/MEDIUM

- POTENTIAL FOR SOIL VOLUME CHANGE. CLAY SOILS THAT EXCEED THE 40% PLASTICITY INDEX ARE CONSIDERED TO HAVE HIGH POTENTIAL FOR SOIL VOLUME CHANGE. FOR THESE WORST-CASE SOILS, THE SETBACKS AND TREE PLANTING RESTRICTIONS REMAIN UNCHANGED FROM THE 2005 CLAY SOILS POLICY (TREE SETBACK MUST EQUAL THE MATURE HEIGHT OF THE TREE - I.E. 7.5M SETBACK FOR SMALL TREES).
- THE USF IS 2.1M OR GREATER BELOW THE LOWEST FINISHED GRADE. NOTE: THIS FOOTING LEVEL MUST BE SATISFIED FOR FOOTINGS WITHIN 10M OF THE TREE, AS MEASURED FROM THE CENTRE OF THE TREE TRUNK, AND VERIFIED BY MEANS OF THE GRADING PLAN AS INDICATED IN THE PROCEDURAL CHANGES BELOW.
  - A SMALL SIZE TREE MUST BE PROVIDED WITH A MINIMUM OF 25M<sup>3</sup> OF AVAILABLE SOIL VOLUME, AS DETERMINED BY A LANDSCAPE ARCHITECT. A MEDIUM SIZE TREE MUST BE PROVIDED WITH A MINIMUM OF 30M<sup>3</sup> OF AVAILABLE SOIL VOLUME, AS DETERMINED BY A LANDSCAPE ARCHITECT. THE DEVELOPER WILL ENSURE THE SOIL IS GENERALLY UNCOMPACTED WHEN BACKFILLING IN STREET TREE PLANTING LOCATIONS.
  - THE SOIL VOLUME CALCULATION MUST BE BASED ON A DEPTH OF 1.5M BELOW FINISHED GRADE (E.G. 5M LENGTH X 4M WIDTH AT SURFACE X 1.5M DEPTH = 30M<sup>3</sup>). IT MAY INCLUDE LANDS IN THE RIGHT-OF-WAY AND ON PRIVATE PROPERTY, BUT MUST SUBTRACT THE VOLUME OF SHALLOW UTILITY TRENCHES (I.E. VOLUME OF SHALLOW UTILITY TRENCHES CANNOT COUNT TOWARDS MINIMUM SOIL VOLUME).
  - THE TREE SPECIES MUST BE SMALL TO MEDIUM SIZE, AS CONFIRMED BY A LANDSCAPE ARCHITECT IN THE LANDSCAPE PLAN.
  - THE FOUNDATION WALLS ARE TO BE REINFORCED AT LEAST NOMINALLY (MINIMUM OF TWO UPPER AND TWO LOWER 15M BARS IN THE FOUNDATION WALL) TO PROVIDE DUCTILITY AS DESCRIBED IN THE GEOTECHNICAL REPORT.
  - GRADING SURROUNDING THE TREE MUST PROMOTE DRAINING TO THE TREE ROOT ZONE (IN SUCH A MANNER AS NOT TO BE DETRIMENTAL TO THE TREE), AS NOTED ON THE SUBDIVISION GRADING PLAN.

#### PLANT LIST - STREET TREES

KEY	QTY.	BOTANICAL NAME	COMMON NAME	CAL/HT. (mm)	ROOT
MEDIUM DECIDUOUS STREET TREES (INCLUDES TRAILSEGE PHASE 1 COULOUR STREET TREES)					
AR	13	ACER RUBRUM 'AUTUMN SPIRE'	AUTUMN SPIRE MAPLE	60	B&B
CS	7	CATALPA SPECIOSA	NORTHERN CATALPA	60	B&B
CO	8	CELTS OCCIDENTALIS	HACKBERRY	60	B&B
CC	9	CORYLUS COLUMNNA	TURKISH HAZEL	60	B&B
GB	9	GINKGO BILOBA 'AUTUMN GOLD'	AUTUMN GOLD GINKGO	60	B&B
GS	9	GLEDITSIA TRIACANTHOS VAR. INERMIS HALKA	HALKA HONEYLOCUST	60	B&B
TC	8	ILIX CORDATA 'CORINTHIAN'	CORINTHIAN LINDEN	60	B&B
63					
SMALL DECIDUOUS STREET TREES					
MS	3	MALUS 'SNOWDRIFT'	SNOWDRIFT CRAB APPLE	60	B&B
PF	2	PINUS STROBUS 'FASTIGIATA'	COLUMNAR WHITE PINE	200cm	B&B
CONIFEROUS TREES					
AC	36	AMELANCHIER CANADENSIS	SERVICEBERRY (TREE FORM)	125cm HT.	PT
AI	45	AMELANCHIER LAEVIS	ALLEGHENY SERVICEBERRY (TREE FORM)	125cm HT.	PT
Ca	44	CORNUS ALTERNIFOLIA	PAGODA DOGWOOD (TREE FORM)	125cm HT.	PT
VI	39	VIBURNUM LENTAGO	NANNYBERRY (TREE FORM)	125cm HT.	PT
164					