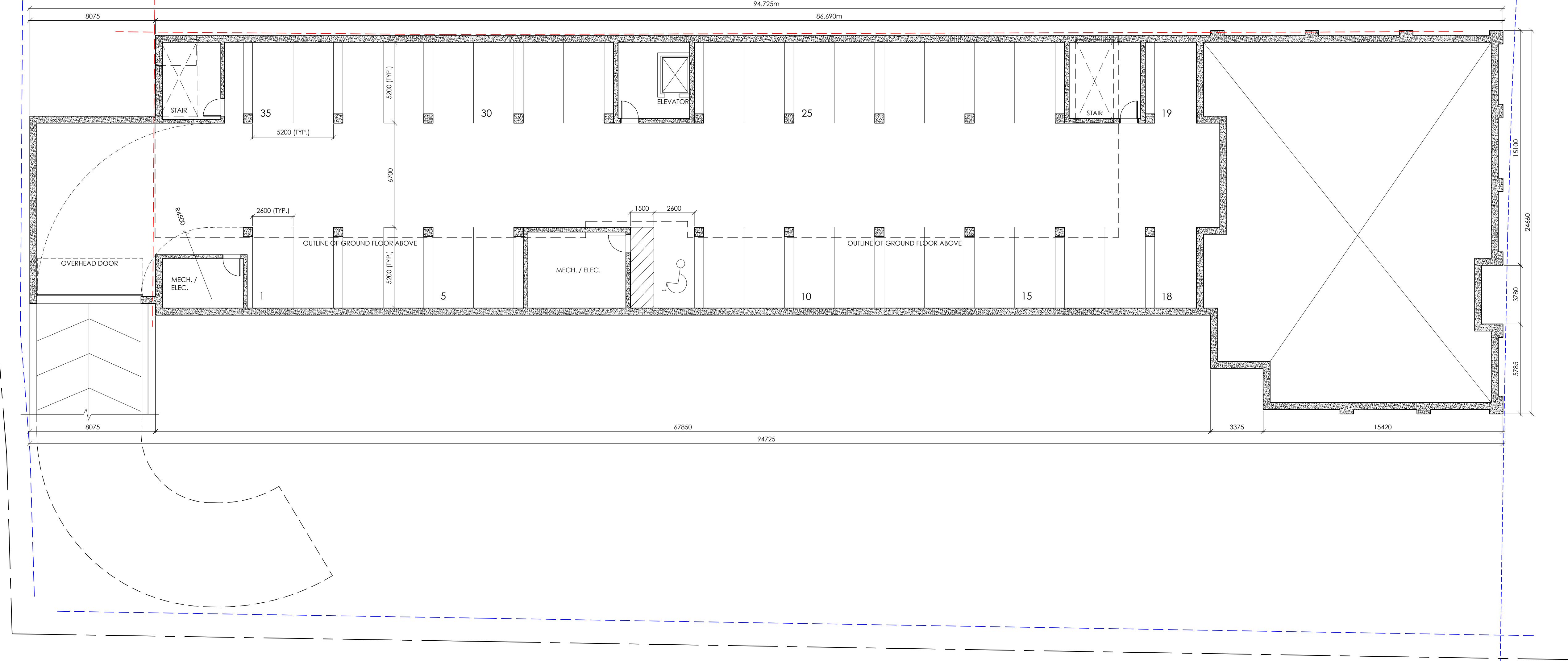
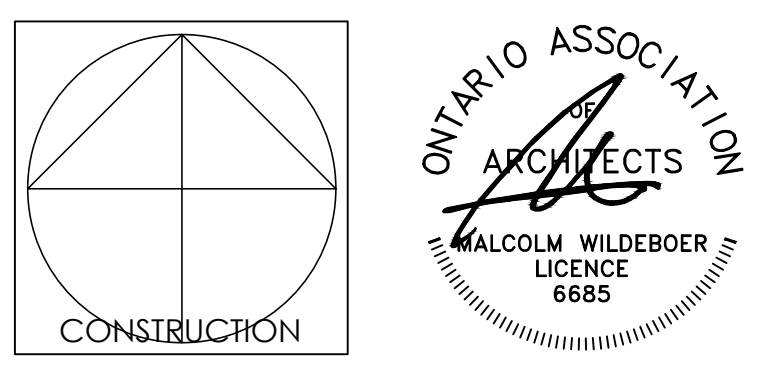
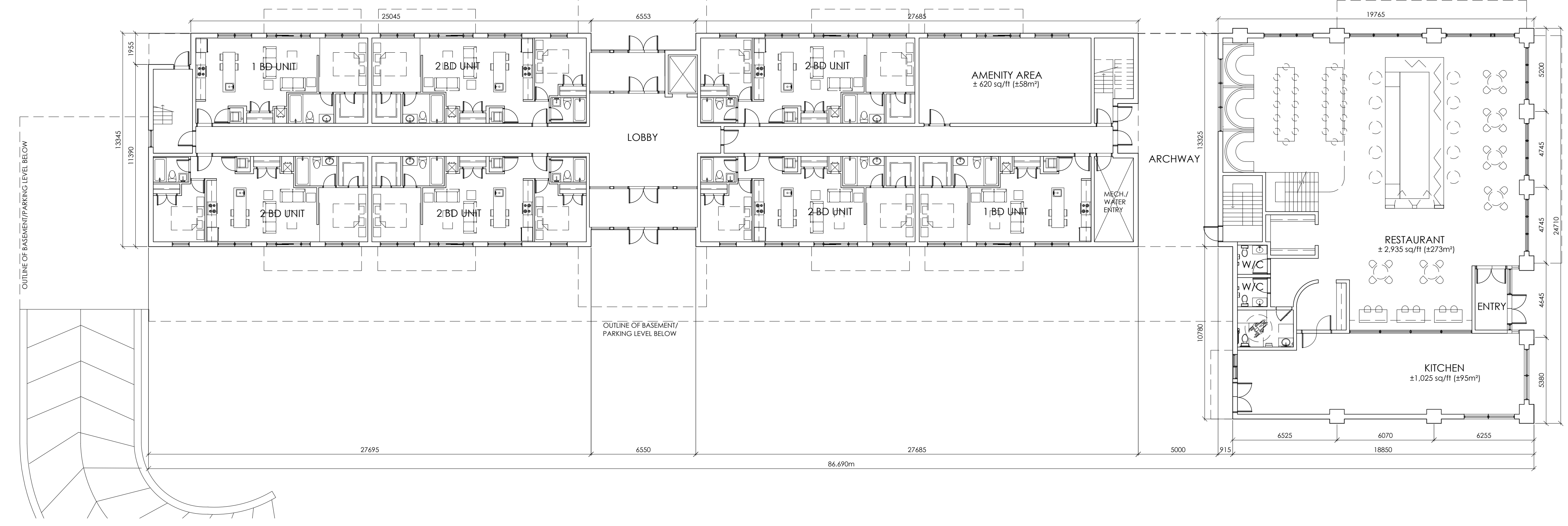


NO.	REVISION	DATE
1	ISSUED FOR REVIEW	SEPT. 24/2020
2	ISSUED FOR SITE PLAN APPROVAL	NOV. 18/2020
3	ISSUED FOR CITY REVIEW	APR. 23/2021

**BASEMENT/PARKING LEVEL PLAN**  
SCALE: 1:150



**GROUND FLOOR PLAN**  
SCALE: 1:150



**Vandenberg & Wildeboer**  
ARCHITECTS  
www.vandenberg-wildeboer.com Telephone: 613-387-0144 Fax: 613-371-8829 mal@vandenberg-wildeboer.com  
"THE OLD STONE LODGE" - 160 PLAINFIELD AVENUE - OTTAWA, ONTARIO - CANADA - K1E 0B0"

PROJECT TITLE: THE STATION  
1518-1524-1526 STITTVILLE MAIN STREET

DRAWING TITLE: BASEMENT AND GROUND FLOOR PLAN

DESIGNED BY: MW  
DRAWN BY: SC  
START DATE: JULY 2020  
SCALE: AS SHOWN  
PROJECT NO. 1932

DATE: April 23, 2021

