

NOTES:

DO NOT SCALE DRAWINGS;

NOTES ARE APPLICABLE TO ALL DRAWINGS IN THE SET;

Fotenn Consultants Inc. IS NOT RESPONSIBLE FOR ACCURACY OF BASE INFORMATION;

REFER TO CIVIL ENGINEERING DRAWINGS FOR GRADING & SITE SERVICING INFORMATION;

THE CONTRACTOR IS RESPONSIBLE FOR CONFIRMING SITE CONDITIONS AND REPORTING ANY DISCREPANCIES TO THE LANDSCAPE ARCHITECT;

THE CONTRACTOR IS RESPONSIBLE FOR CONFIRMING EXACT LOCATIONS OF ALL UNDERGROUND SERVICES AND OBTAINING CLEARANCE FROM ALL APPLICABLE UTILITIES. PROPOSED WORKS FOUND TO BE IN CONFLICT WITH UNDERGROUND SERVICES MAY BE ADJUSTED AT THE DIRECTION OF THE LANDSCAPE ARCHITECT;

LANDSCAPE ELEMENTS SHOWN ARE SUBJECT TO THE FINAL LOCATION OF UNDERGROUND SERVICES AND UTILITIES;

DO NOT INSTALL TREES ON PROPERTY / LOT LINES OR WITHIN DRAINAGE EASEMENTS;

PERFORM WORK IN ACCORDANCE WITH DETAILS AND SPECIFICATIONS;

ALL UN-PAVED SURFACES TO RECEIVE 150mm DEPTH TOPSOIL & SOD.

Copyright Reserved
Tous droits d'auteur à tous les modèles et dessins sont la propriété de Fotenn Consultants Inc. Toute réimpression ou utilisation non autorisée est interdite. NE PAS L'ÉCHELLE DE DESSIN

Client / Client

10731854 CANADA INC.
1555 Leggett Drive, Suite 304, Tower A
Ottawa, ON K2K 2X3

legend / légende

- PROPERTY LINE
--- ENVIRONMENTAL SETBACK
- PROPOSED BUILDING
ASPHALT PAVING
CAST-IN-PLACE CONCRETE PAVING
PRECAST CONCRETE UNIT PAVES
SOD
STONEDUST PATHWAY
RIVERSTONE
- NEW DECIDUOUS TREE
NEW CONIFEROUS TREE
NEW CONIFEROUS SHRUB
SHRUB / PERENNIAL PLANTING
MEADOW SEED MIX
NATURALIZED RESTORATION PLANTING

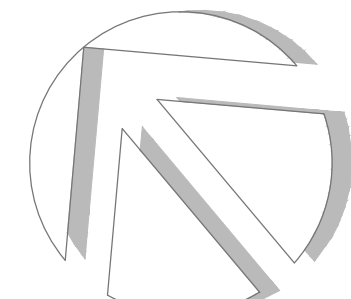
07	Issued for SPA Resubmission	2021/02/17
06	Issued for Coordination	2021/01/18
05	Issued for SPA Resubmission	2020/10/30
04	Issued for Coordination	2020/10/23
03	Issued for Coordination	2020/10/20
02	Issued for MECF review	2020/09/24
01	Issued for Coordination	2020/09/04
00	Issued for SPA	2020/05/27

rev'n description / la description yyyy/mm/dd

FOTENN Planning + Design
396 Cooper Street, Suite 300
Ottawa, ON, CANADA K2P 2H7
613.730.5709
fotenn.com

north / le nord

stamp / le cachet



project / projet

788 MARCH ROAD

drawing / dessin

LANDSCAPE PLAN

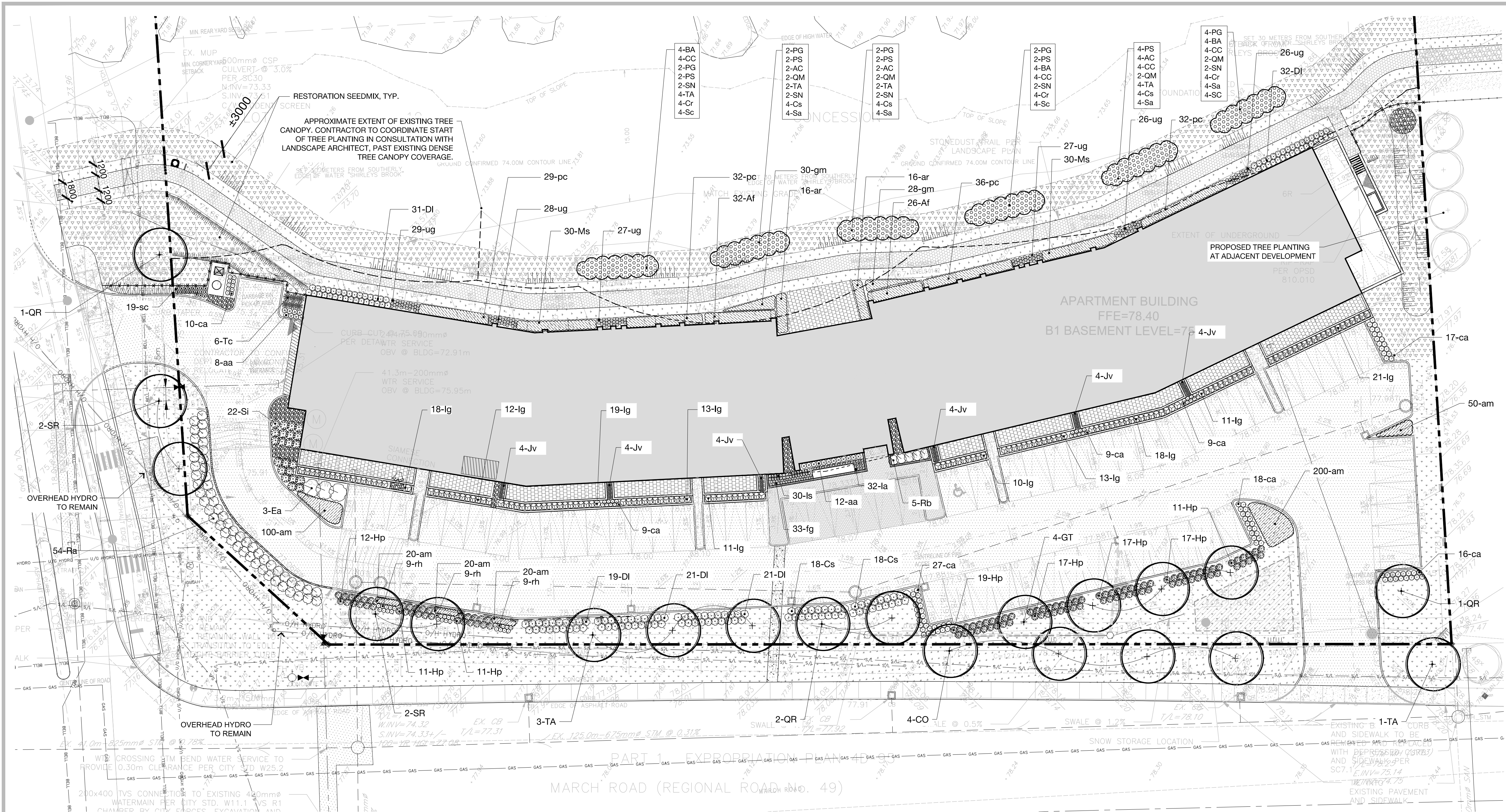
designed / conçu KA	drawn / dessiné PM	reviewed / examiné KA
date Jan 2020	project number / No. du projet X ##-##	
drawing number / No. du dessin		

L1 of 5

#17779

1 LANDSCAPE PLAN
L1 1:250

D07-12-18-0128



KEY	QTY	BOTANICAL NAME	COMMON NAME	SIZE	COMMENTS
DECIDUOUS TREE					
CO	4	<i>Celtis occidentalis</i>	Common Hackberry	6cm caliper	NATIVE
GT	3	<i>Gleditsia triacanthos</i> var. <i>inermis</i>	Thornless Honeylocust	6cm caliper	NATIVE
QR	4	<i>Quercus rubra</i>	Red Oak	6cm caliper	NATIVE
SR	4	<i>Syringa reticulata</i> 'Ivory Silk'	Ivory Silk Japanese Tree Lilac	6cm caliper	ADAPTABLE
TA	4	<i>Tilia americana</i> 'Redmond'	Redmond Basswood	6cm caliper	NATIVE
SHRUBS					
Cs	36	<i>Cornus sericea</i> 'Farrow' (Arctic Fire)	Arctic Fire Dogwood	2 Gal.	ADAPTABLE
Ea	3	<i>Euonymus alatus</i> 'Compactus'	Dwarf Burning Bush	2 Gal.	ADAPTABLE
Di	114	<i>Diervilla lonicera</i>	Bush Honeysuckle	2 Gal.	NATIVE
Hp	115	<i>Hypericum prolificum</i>	Shrubby St. John's Wort	2 Gal.	NATIVE
Ig	146	<i>Ilex glabra</i> Gem Box	Gem Box Inkberry Holly	2 Gal.	ADAPTABLE
Jv	24	<i>Juniperus virginiana</i> 'Blue Arrow'	Blue Arrow Juniper	125cm PT	ADAPTABLE
Ra	54	<i>Rhus aromatica</i> 'Glo-Low'	Fragrant Sumac	2 Gal.	ADAPTABLE
Rb	5	<i>Rosa bonica</i>	Bonica Rose	2 Gal.	ADAPTABLE
Si	22	<i>Stephanandra incisa</i> 'Crispa'	Cutleaf Stephanandra	2 Gal.	ADAPTABLE
Tc	6	<i>Taxus canadensis</i>	Canadian Yew	3 Gal.	NATIVE
FERNS					
Af	58	<i>Athyrium filix-femina</i>	Lady Fern	1 Gal.	NATIVE
Ms	60	<i>Matteuccia struthiopteris</i>	Ostrich Fern	1 Gal.	NATIVE

PERENNIALS AND GRASSES					
aa	20	<i>Astilbe arendsi</i> 'Bridal Veil' (Brautschleier)	Bridal Veil False Spirea	1 Gal.	ADAPTABLE
am	410	<i>Armeria maritima</i> 'alba'	White Sea Thrift	1 Gal.	ADAPTABLE
ar	32	<i>Cimicifuga racemosa</i>	Black Snakeroot	1 Gal.	NATIVE
ca	115	<i>Calamagrostis x acutiflora</i> 'Karl Foerster'	Feather Reed Grass	1 Gal.	ADAPTABLE
fg	33	<i>Festuca glauca</i>	Blue Fescue	1 Gal.	ADAPTABLE
gm	58	<i>Geranium maculatum</i>	Wild Geranium	1 Gal.	NATIVE
la	32	<i>Lavandula angustifolia</i> 'Elegance Purple'	English Lavender	1 Gal.	ADAPTABLE
ls	30	<i>Liatris spicata</i>	Dense Blazing Star	1 Gal.	NATIVE
pc	129	<i>Polygonatum canaliculatum</i>	Great Solomon's Seal	1 Gal.	NATIVE
rh	27	<i>Rudbeckia hirta</i>	Black-eyed Susan	1 Gal.	NATIVE
sc	16	<i>Schizachyrium scoparium</i>	Little Bluestem	1 Gal.	NATIVE
ug	52	<i>Urtula grandiflora</i>	Large-flowered bellwort	1 Gal.	NATIVE

- IMPORTANT NOTICE FOR CONTRACTOR:**
- THE CITY OF OTTAWA REQUIRES A Certificate of Completion (F1) Landscape Works TO BE SUBMITTED AND SEALED BY THE LANDSCAPE ARCHITECT. CONTRACTORS ARE RESPONSIBLE FOR FAMILIARIZING THEMSELVES WITH THE REQUIREMENTS OF THIS PROCESS AND PROVIDING SUFFICIENT NOTICE TO THE LANDSCAPE ARCHITECT TO CONDUCT SITE REVIEWS **DURING INSTALLATION** OF TREES. THE 1 YEAR WARRANTY PERIOD SHALL NOT COMMENCE UNTIL THE LANDSCAPE ARCHITECT HAS SUBMITTED THE F1 Certificate.
 - PRIOR TO INSTALLATION OF TREES, THE DEVELOPER WILL CONTACT THE PLANNING AND GROWTH MANAGEMENT AND FORESTRY SERVICES TO REVIEW THE SPECIES AND LOCATION OF TREES.
 - LANDSCAPE CONTRACTOR TO CONDUCT COMPLETE REMOVAL AND TREATMENT OF EXISTING BUCKTHORN ALONG THE MULTI-USE PATHWAY NORTH OF THE PROPERTY TO ENSURE THE SUCCESS OF THE NATURALIZED RESTORATION PLANTINGS.
 - NATURALIZED TREE RESTORATION PLANTING ALONG THE NORTH PROPERTY LINE TO BE LAID OUT ON FIELD BY DIRECTION FROM THE LANDSCAPE ARCHITECT.
 - ALL PLANT MATERIAL SHALL BE No. 1 NURSERY STOCK AND SHALL MEET OR EXCEED THE SPECIFICATION OF THE Canadian Standards for Nursery Stock, AS PUBLISHED BY THE Canadian Nursery Landscape Association;
 - SPECIES SUBSTITUTIONS ARE NOT PERMITTED WITHOUT PRIOR WRITTEN APPROVAL OF THE LANDSCAPE ARCHITECT.

NATURALIZED RESTORATION PLANTING SCHEDULE					
KEY	QTY.	BOTANICAL NAME	COMMON NAME	SIZE / CONDITION / SPACING	COMMENTS
CONIFEROUS TREES					
PG	12	<i>Picea glauca</i>	White Spruce	150cm ht. / W.B.	NATIVE
PS	12	<i>Pinus strobus</i>	White Pine	150cm ht. / W.B.	NATIVE
DECIDUOUS TREES					
AC	12	<i>Amelanchier canadensis</i>	Serviceberry	#3 POT whip, 50cm	NATIVE
BA	12	<i>Betula alleghensis</i>	Yellow Birch	#3 POT whip, 100cm	NATIVE
CC	16	<i>Carya cordiformis</i>	Bitternut Hickory	#3 POT whip, 100cm	NATIVE
QM	8	<i>Quercus macrocarpa</i>	Bur Oak	#3 POT whip, 100cm	NATIVE
SN	10	<i>Salix nigra</i>	Black Willow	#3 POT whip, 100cm	NATIVE
TA	12	<i>Tilia americana</i>	Basswood	#3 POT whip, 100cm	NATIVE
DECIDUOUS SHRUBS					
Cr	12	<i>Cornus racemosa</i>	Gray Dogwood	#3 POT, 50cm	NATIVE
Cs	12	<i>Cornus sericea</i>	Red Osier Dogwood	#3 POT, 50cm	NATIVE
Sa	16	<i>Symphoricarpos albus</i>	Snowberry	#3 POT, 50cm	NATIVE
Sc	12	<i>Sambucus canadensis</i>	American Elderberry	#3 POT, 50cm	NATIVE
SEEDMIXES					
TYPE (1)		MEADOW Mix - SEE SPECIES BELOW.		Sow at 500 g/180 m ² or 25 kgs/ha	NATIVE
RESTORATION SEEDMIX (AT A RATE OF 25 kg/ha) MEADOW MIX: 30% FOWL BLUEGRASS, 25% INDIANGRASS, 25% LITTLE BLUESTEM, 10% BLACK EYED SUSAN, 5% FOXGLOVE/BEARDTONGUE, 2% BUTTERFLY WEED, 1% FLAT TOPPED ASTER, 1% NEW ENGLAND ASTER, 1% WILD BERGAMOT.					

- STANDARDS FOR TREE PLANTING:**
- NO PLANTING ON CORNERS OR ANYWHERE WHERE IT WOULD CREATE A SIGHT LINE CONCERN;
- MAINTAIN A MINIMUM DISTANCE OF 7.5m FROM ALL BUILDINGS;
- MAINTAIN A MINIMUM DISTANCE OF 2.5m FROM THE CURB FOR DECIDUOUS TREES AND 4.5m FOR CONIFEROUS TREES;
- MAINTAIN A MINIMUM DISTANCE OF 1.5m FOR DECIDUOUS (4.5m FOR CONIFERS) FROM ANY SIDEWALK OR PRIVATE WALKWAY;
- MAINTAIN A MINIMUM DISTANCE OF 1.2m FROM ALL DRIVEWAYS;
- MAINTAIN A MINIMUM DISTANCE OF 2.5m FROM COMMUNITY MAILBOXES, LIGHT STANDARDS, FIRE HYDRANTS AND NO PLANTING IN FRONT OF HYDRANTS;
- MAINTAIN A MINIMUM DISTANCE OF 3.0m FROM ALL HYDRO TRANSFORMERS;
- MAINTAIN A MINIMUM DISTANCE OF 1.0m FROM ALL UNDERGROUND SERVICES;
- MAINTAIN A MINIMUM DISTANCE OF 1.0m FROM ALL LIGHT STANDARD GROUNDING WIRE, BELL AND CABLE BOXES;
- MAINTAIN A MINIMUM DISTANCE OF 10.0m FROM BUS SHELTERS

Copyright Reserved
Tous droits d'auteur à tous les modèles et dessins sont la propriété de Fotenn Consultants Inc. L'usage non autorisé de reproduction ou utilisation non autorisée est interdite. NE PAS L'ÉCHELLE DE DESSIN

Copyright réservés
Les droits d'auteur à tous les modèles et dessins sont la propriété de Fotenn Consultants Inc. L'usage non autorisé de reproduction ou utilisation non autorisée est interdite. NE PAS L'ÉCHELLE DE DESSIN

Client / Client

10731854 CANADA INC.
1555 Leggett Drive, Suite 304, Tower A
Ottawa, ON K2K 2X3

legend / légende

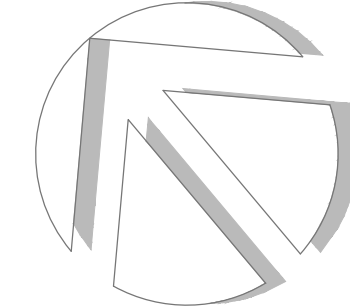
- PROPERTY LINE
- ENVIRONMENTAL SETBACK
- PROPOSED BUILDING
- ASPHALT PAVING
- CAST-IN-PLACE CONCRETE PAVING
- PRECAST CONCRETE UNIT PAVES
- SOD
- STONE DUST PATHWAY
- RIVERSTONE
- NEW DECIDUOUS TREE
- NEW CONIFEROUS TREE
- NEW CONIFEROUS SHRUB
- SHRUB / PERENNIAL PLANTING
- MEADOW SEED MIX
- NATURALIZED RESTORATION PLANTING

07	Issued for SPA Resubmission	2021/02/17
06	Issued for Coordination	2021/01/18
05	Issued for SPA Resubmission	2020/10/30
04	Issued for Coordination	2020/10/23
03	Issued for Coordination	2020/10/20
02	Issued for MECP review	2020/09/24
01	Issued for Coordination	2020/09/04
00	Issued for SPA	2020/05/27

FOTENN Planning + Design
396 Cooper Street, Suite 300
Ottawa, ON, CANADA K2P 2H7
613.730.5709
fotenn.com

north / le nord

stamp / le cachet



project / projet

788 MARCH ROAD

drawing / dessin

PLANTING PLAN

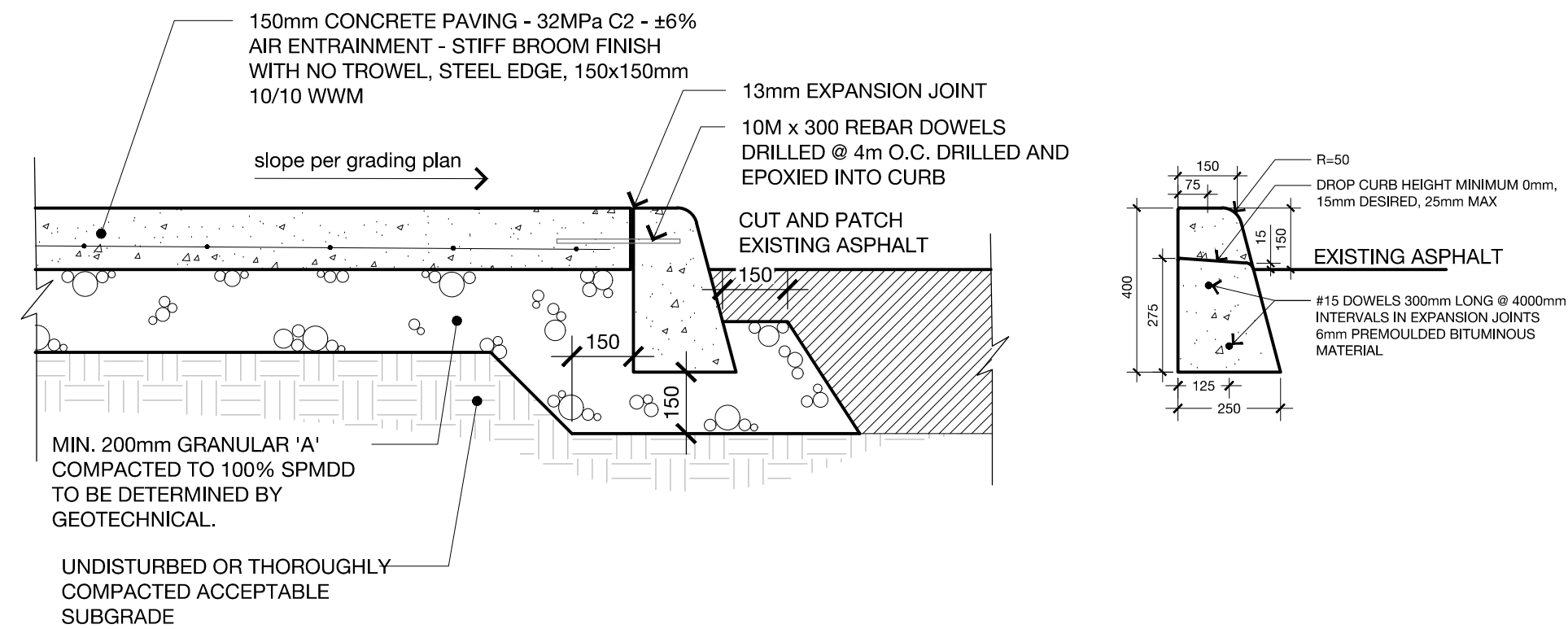
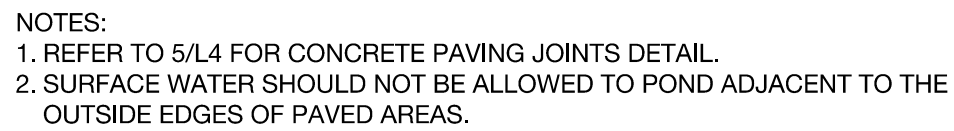
designed / conçu KA	drawn / dessiné PM	reviewed / examiné KA
date Jan 2020	project number / No. du projet X ###-##	
drawing number / No. du dessin		

L2 of 5

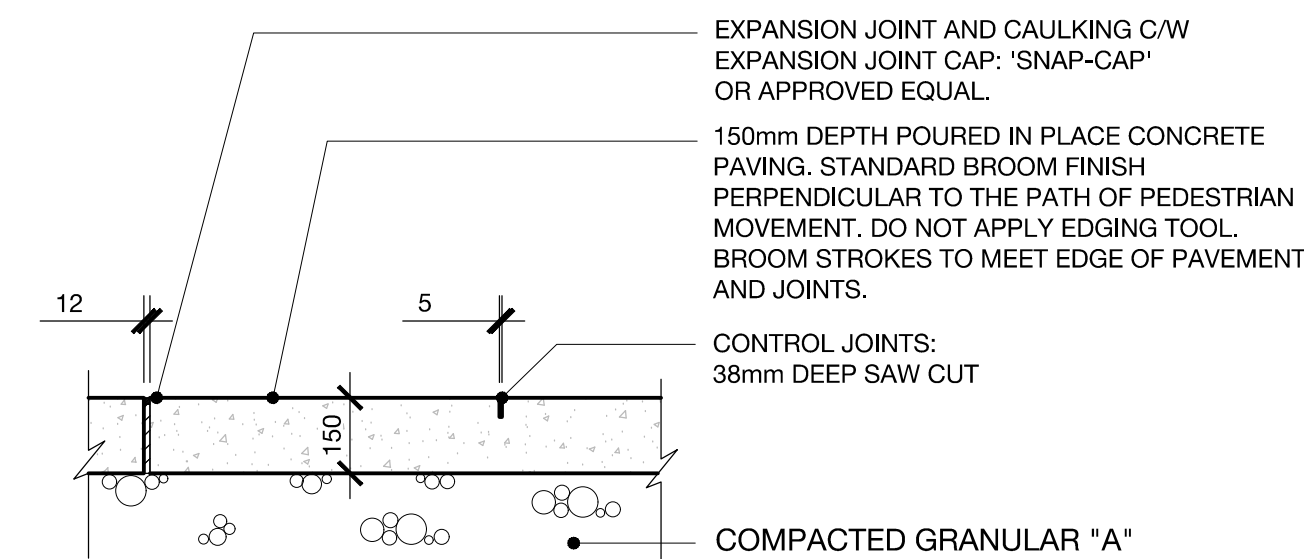
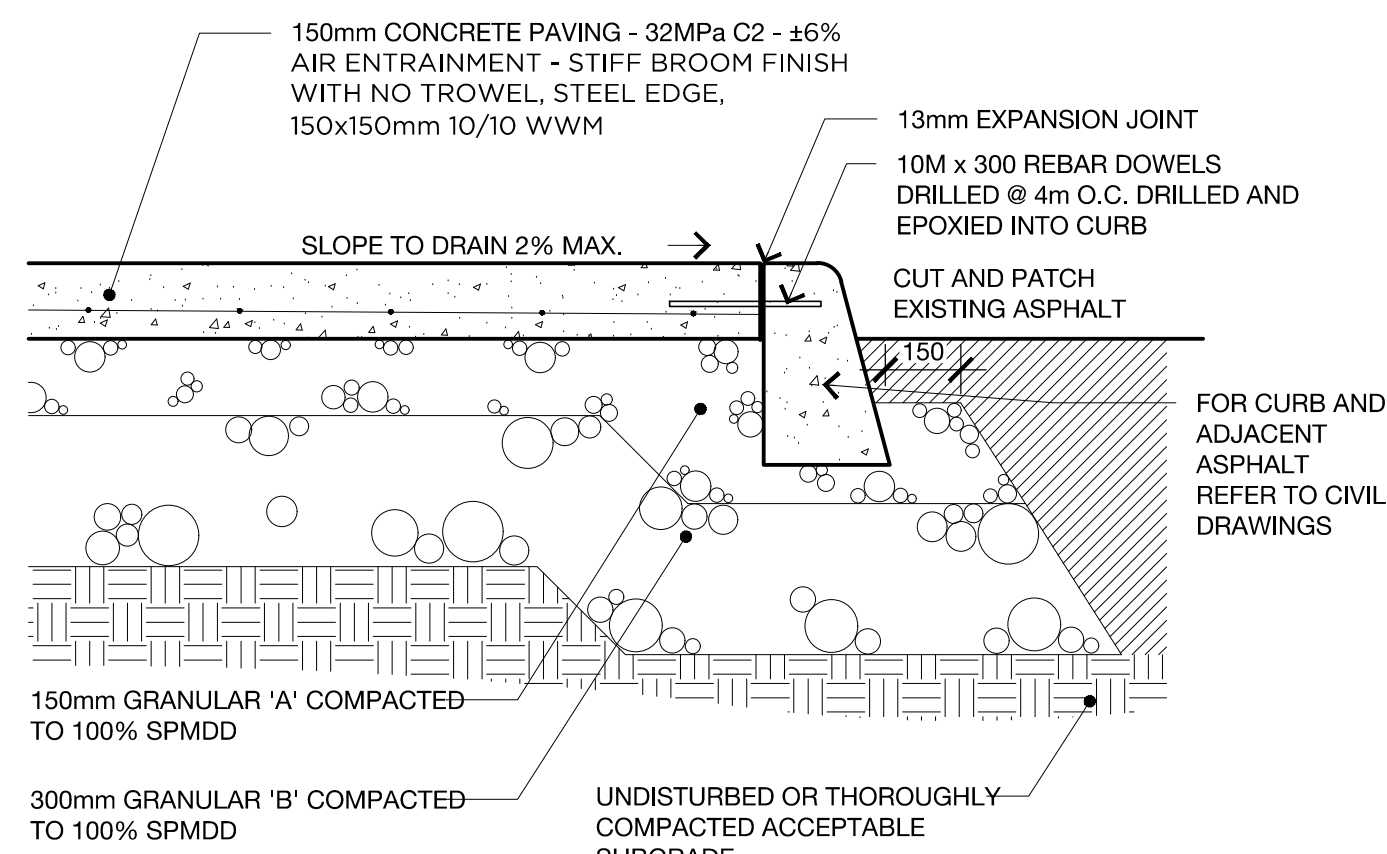
#17779

1
L2
PLANTING PLAN
1:250

D07-12-18-0128

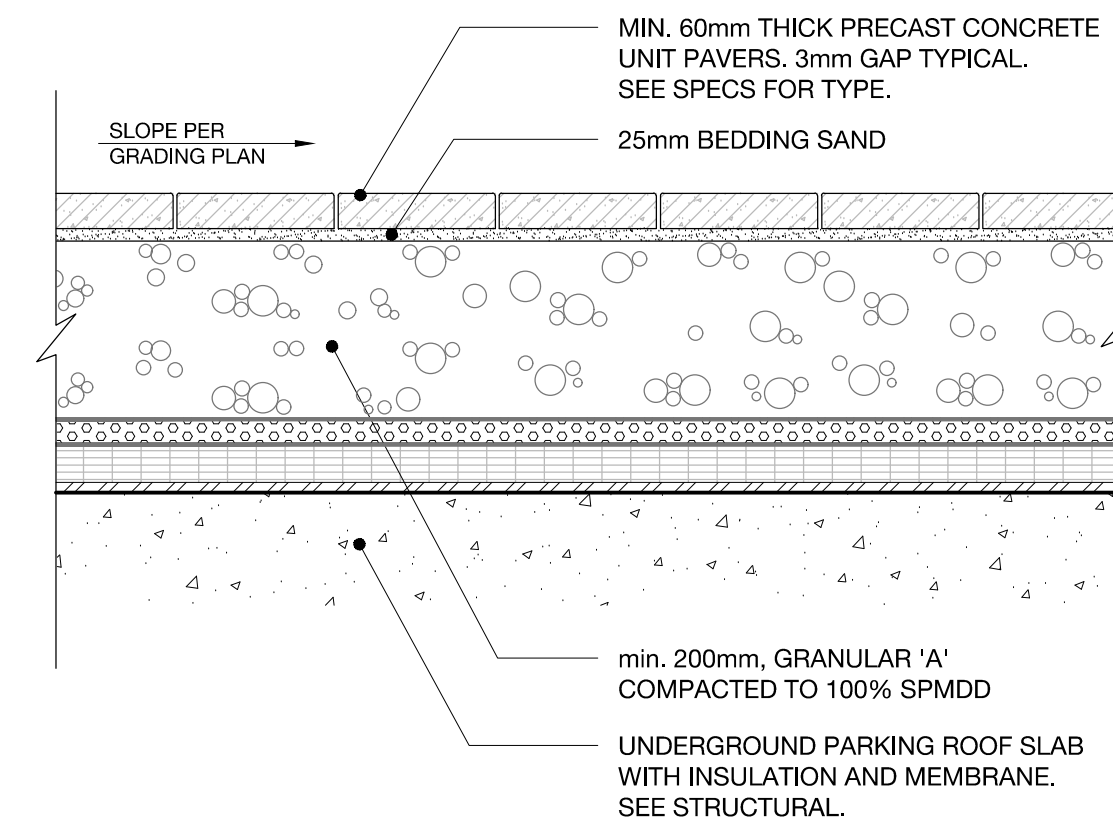
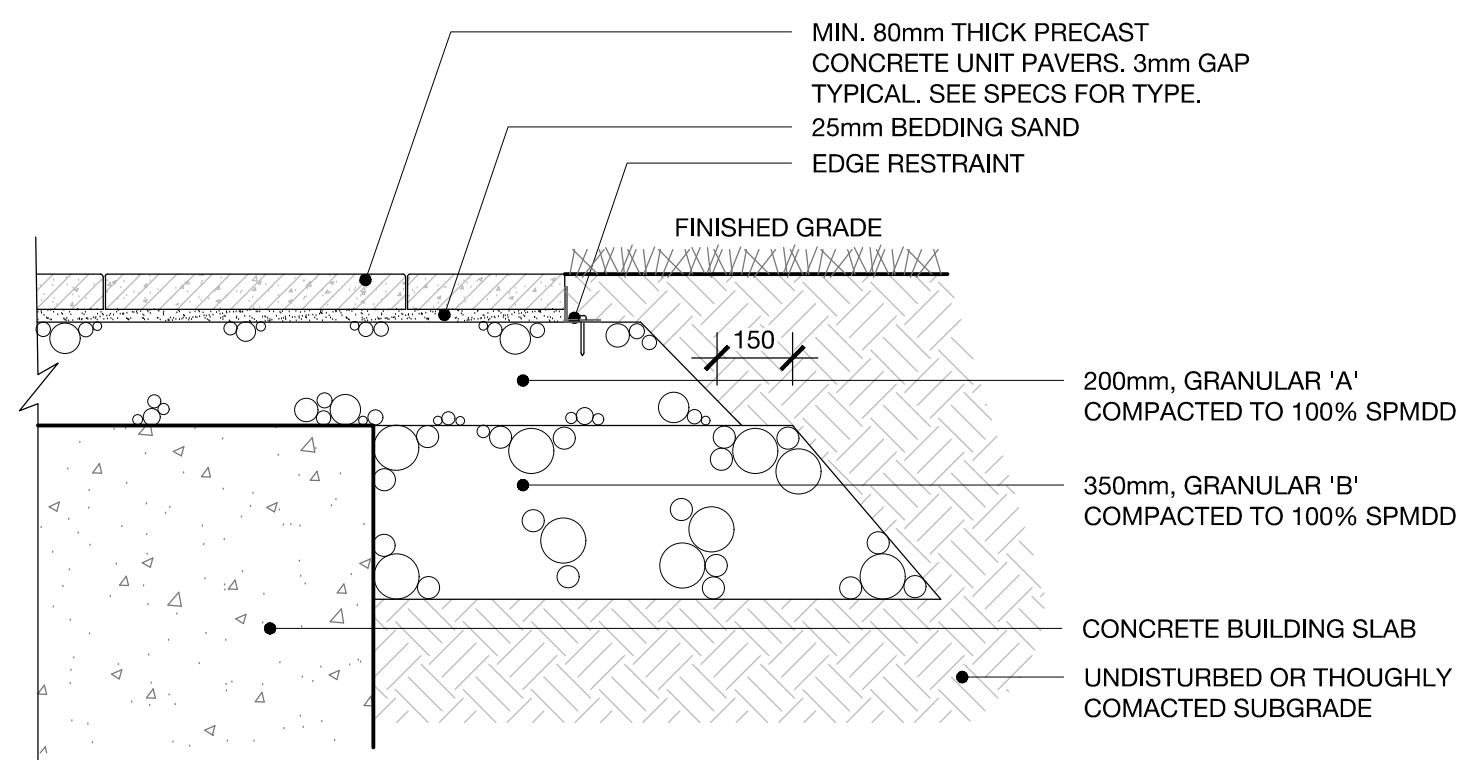


2	LIGHT DUTY CONCRETE PAVING AT PARKING LOT ISLANDS
L4	n.t.s.



- NOTES:
1. ALL DIMENSIONS IN MILLIMETERS.
 2. CONCRETE TO BE 35MPa @ 28 DAYS WITH $\pm 6\%$ AIR ENTRAINMENT.
 3. SLOPE PAVING SURFACE TO DRAIN AT MAX. 2%.
 4. CONTROL JOINTS TO BE @ 2000mm O.C. UNLESS OTHERWISE SHOWN ON DRAWINGS.
 5. EXPANSION JOINT SPACING @ 6000mm O.C. UNLESS OTHERWISE SHOWN ON DRAWINGS.
 6. EXPANSION JOINTS TO BE OF 12mm PREMOULDED BITUMINOUS MATERIAL C/W REMOVABLE PLASTIC CAP AND PLACED AT THE INTERSECTION WITH OTHER SIDEWALKS AND WHERE SIDEWALK MEETS THE CURB.
 7. SIDEWALK TO BE REINFORCED AT ALL DRIVEWAYS AND LANE CROSSINGS WITH 150x150mm 10/10 WWM.
 8. IN CASE OF MULTIPLE POURS, AT THE END OF EACH POUR, CONSTRUCTION JOINT SHOULD BE FORMED WITH DEFORMED TIE BARS ALONG THE JOINT. THE TIE BARS ARE TO BE #4 SIZE SPACED AT 750 MM SPACING.
 9. ADDITIONAL DOWELS WILL BE REQUIRED WHEN CONNECTING INTO AN EXISTING PAVEMENT
 10. SEE SEPARATE DETAIL FOR CONCRETE PAVING ON ARCHITECTURAL DRAWINGS.
 11. SEE SPECIFICATIONS UNDER SECTION 32 13 13 'Cast in Place Concrete'.

4	HEAVY DUTY CONCRETE PAVING
L4	n.t.s.



7	HEAVY-DUTY PRECAST CONCRETE PAVER
L4	n.t.s.

8	LIGHT DUTY PRECAST CONCRETE PAVER ON SLAB
L4	n.t.s.

rev'n	description / la description	yyyy/mm/dd
-------	------------------------------	------------

FOTENN Planning + Design
396 Cooper Street, Suite 300
Ottawa, ON, CANADA K2P 2H7
613.730.5709
fotenn.com

| stamp / le cachet



project / projet

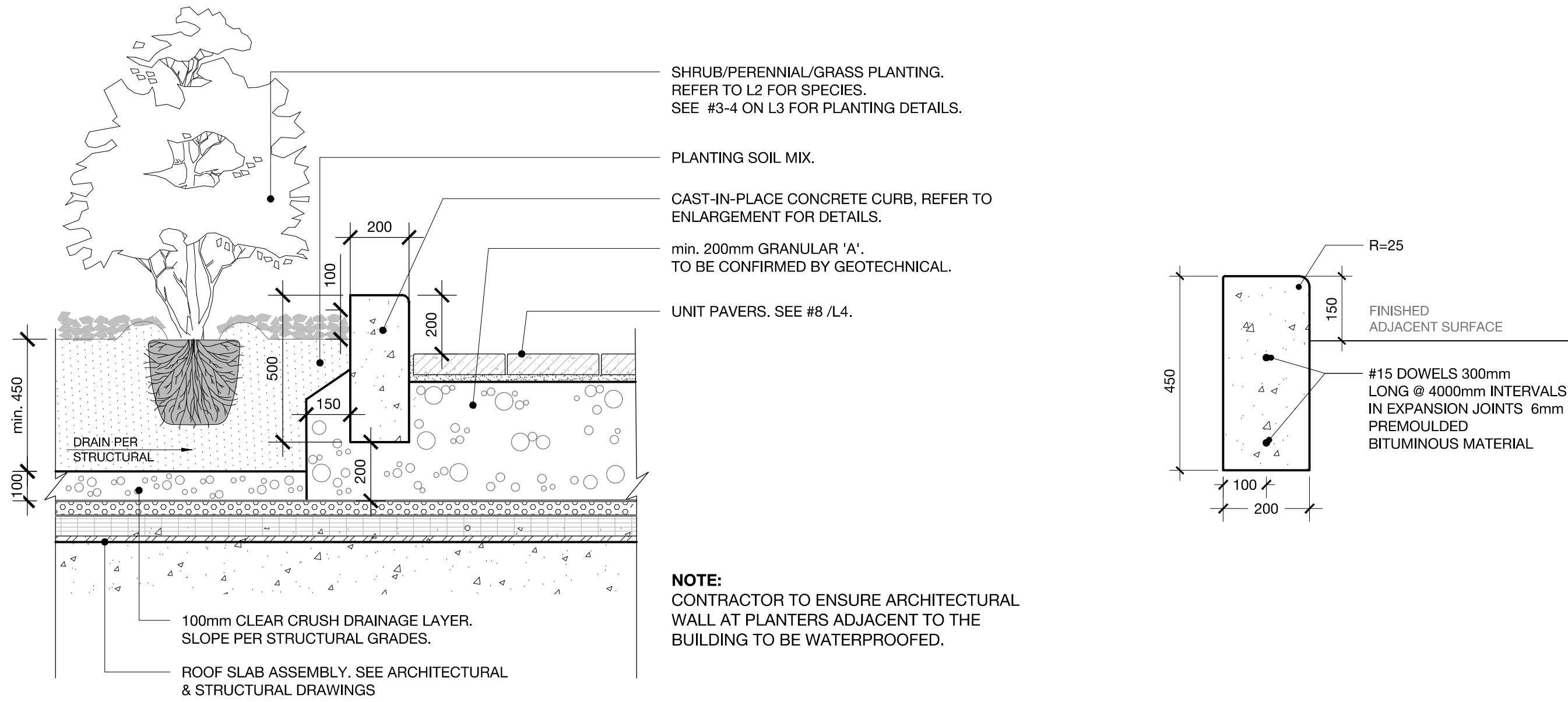
788 MARCH ROAD

drawing / dessin

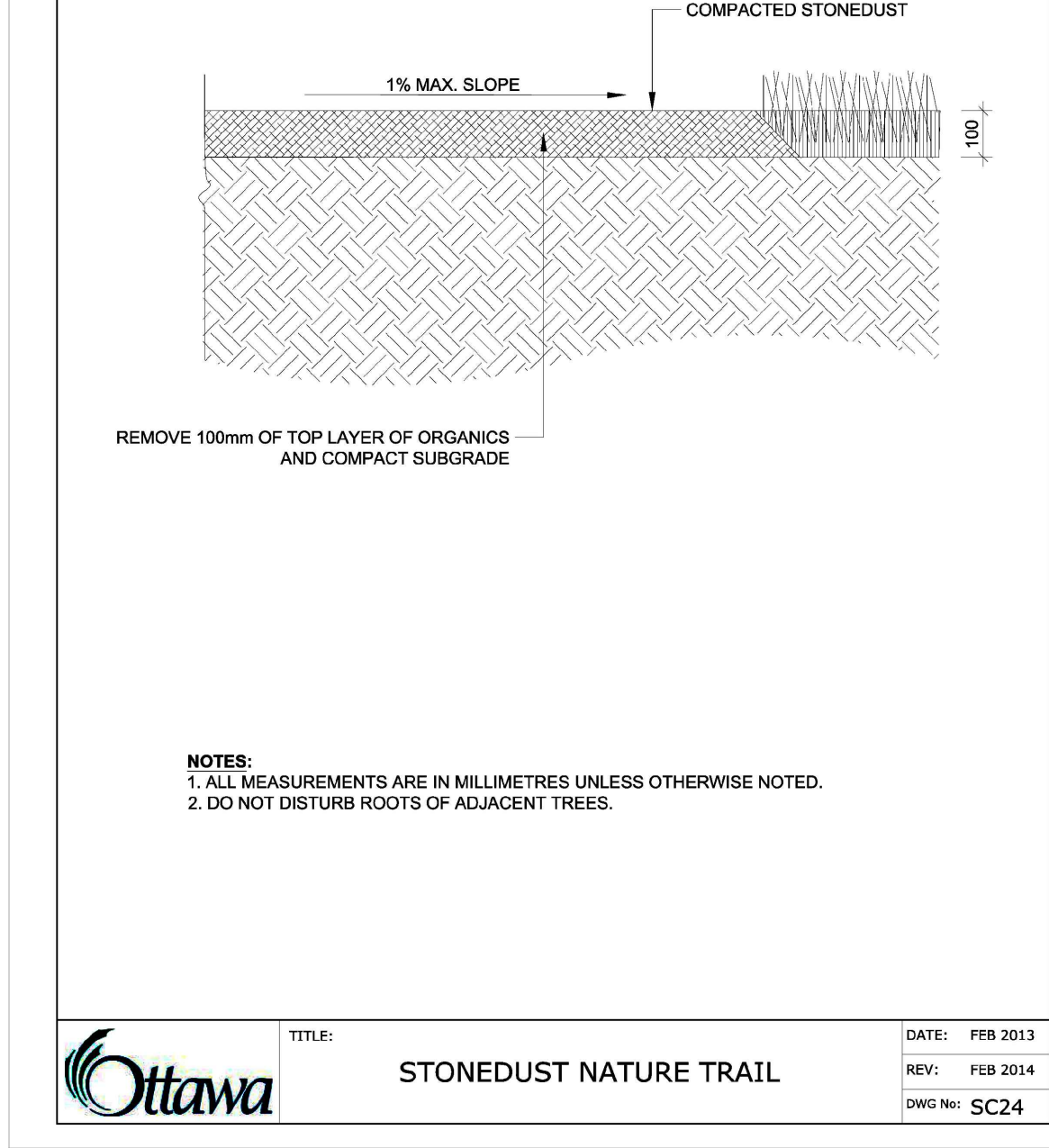
LANDSCAPE DETAILS

designed / conçu KA	drawn / dessiné PM	reviewed / examiné KA
date Jan 2020	project number / No. du projet X ###-###	
drawing number / No. du dessin		

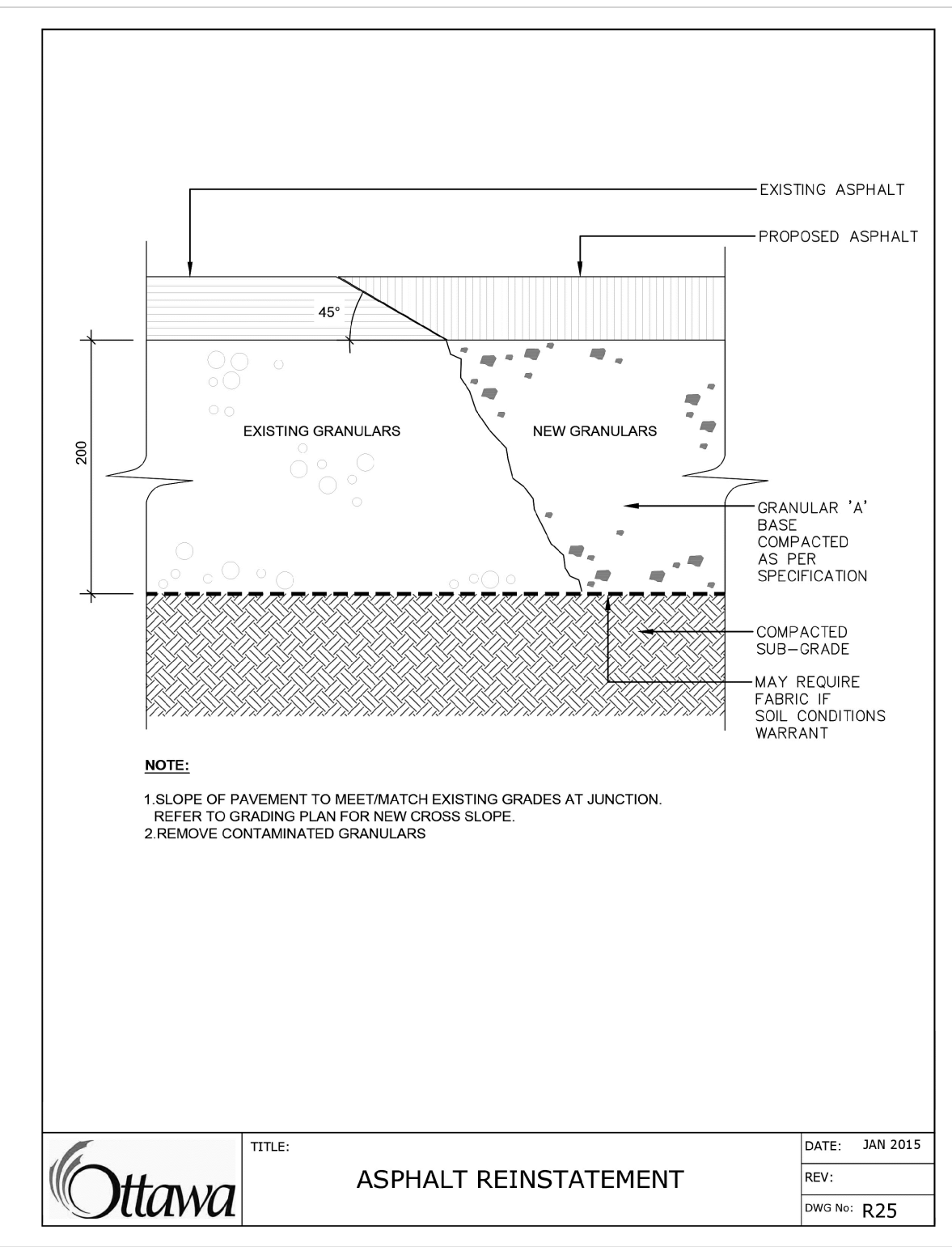
L4 of 5



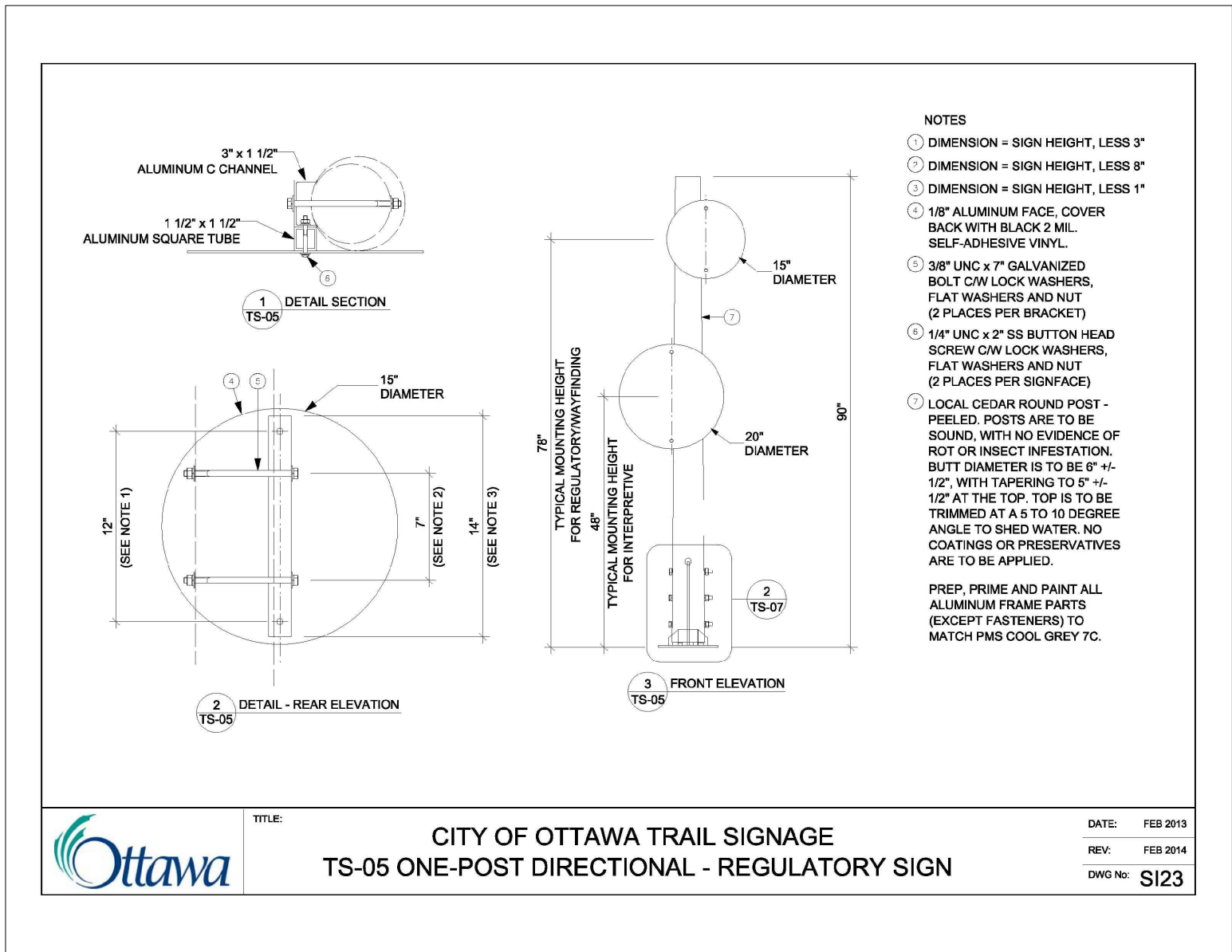
1
L5
RAISED CONCRETE PLANTING BED CURB OVER ARCHITECTURAL SLAB
n.t.s.



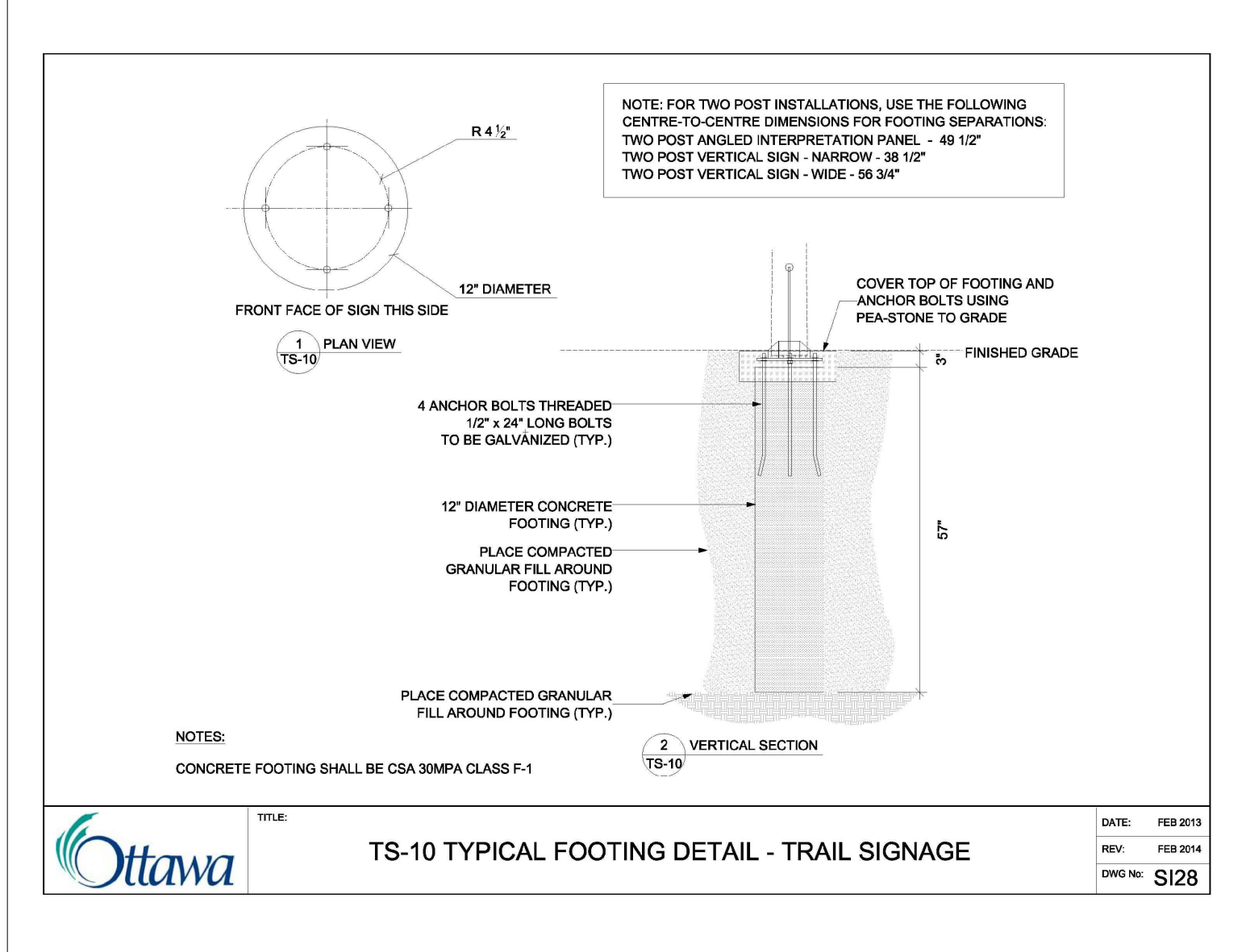
2
L5
STONEDUST NATURE TRAIL
n.t.s.



3
L5
ASPHALT REINSTATEMENT
n.t.s.



4
L5
TRAIL REGULATORY SIGNAGE
n.t.s.



5
L5
TRAIL SIGNAGE FOOTING
n.t.s.

Client / Client

10731854 CANADA INC.
1555 Legget Drive, Suite 304, Tower A
Ottawa, ON K2K 2X3

Legend / légende

07	Issued for SPA Resubmission	2021/02/17
06	Issued for Coordination	2021/01/18
05	Issued for SPA Resubmission	2020/10/30
04	Issued for Coordination	2020/10/23
03	Issued for Coordination	2020/10/20
02	Issued for MECP review	2020/09/24
01	Issued for Coordination	2020/09/04
00	Issued for SPA	2020/05/27

rev'n description / la description yyyy/mm/dd

FOTENN Planning + Design
396 Cooper Street, Suite 300
Ottawa, ON, CANADA K2P 2H7
613.730.5709
fotenn.com

north / le nord stamp / le cachet

project / projet

788 MARCH ROAD

drawing / dessin

LANDSCAPE DETAILS

designed / conçu KA	drawn / dessiné PM	reviewed / examiné KA
date Jan 2020	project number / No. du projet X ##-##	

drawing number / No. du dessin

L5 of 5

#17779

D07-12-18-0128