

OWNER:
 NIVO DEVELOPMENTS INC.
 255 MICHAEL COWPLAND DRIVE
 OTTAWA, ONTARIO, K2M 0M5
 613-224-6200

REFER TO DRAWING C-1 AND NOTES &
 DETAILS ON DRAWINGS C-7 & C-8

DRAWING LEGEND

- CB CATCH BASIN
- MH MANHOLE
- CB/MH CATCH BASIN/MANHOLE
- MH SANITARY MANHOLE
- SPL SPRINGLINE OF PIPE
- INV INVERT OF PIPE
- SAN SANITARY SEWER
- ST STORM SEWER
- WS/WM WATER SERVICE/WATERMAIN
- CS CURB STOP & STANDPOST
- VB VALVE & VALVE BOX
- FH FIRE HYDRANT
- WM WATER METER
- RM REMOTE WATER METER READOUT
- EG EXISTING GRADE ELEVATION
- PL PROPERTY LINE
- FFL FIRST FLOOR ELEVATION
- TOP TOP OF FOUNDATION
- BFL BASEMENT FLOOR ELEVATION
- USF UNDERSIDE OF FOOTING

KEY PLAN



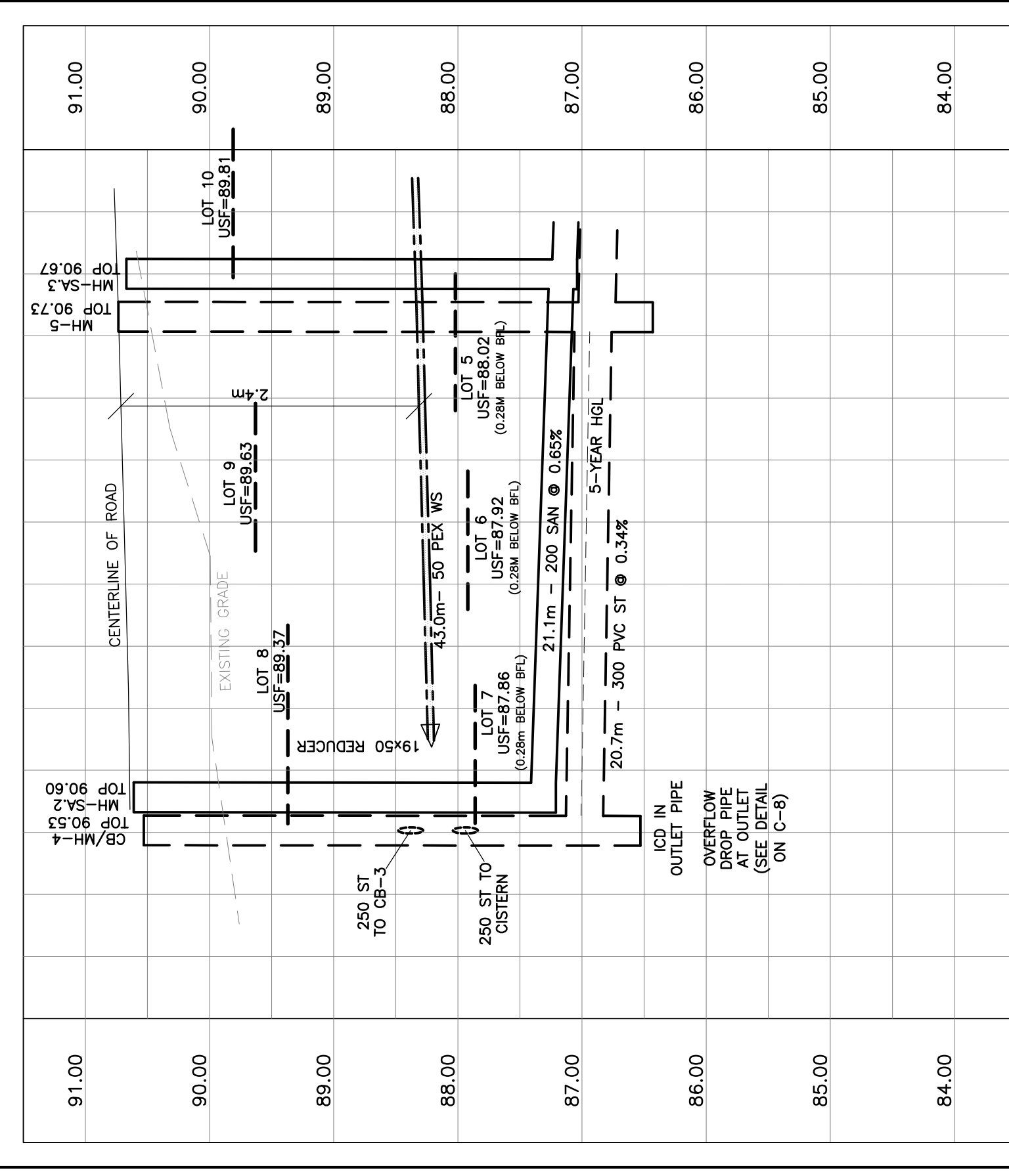
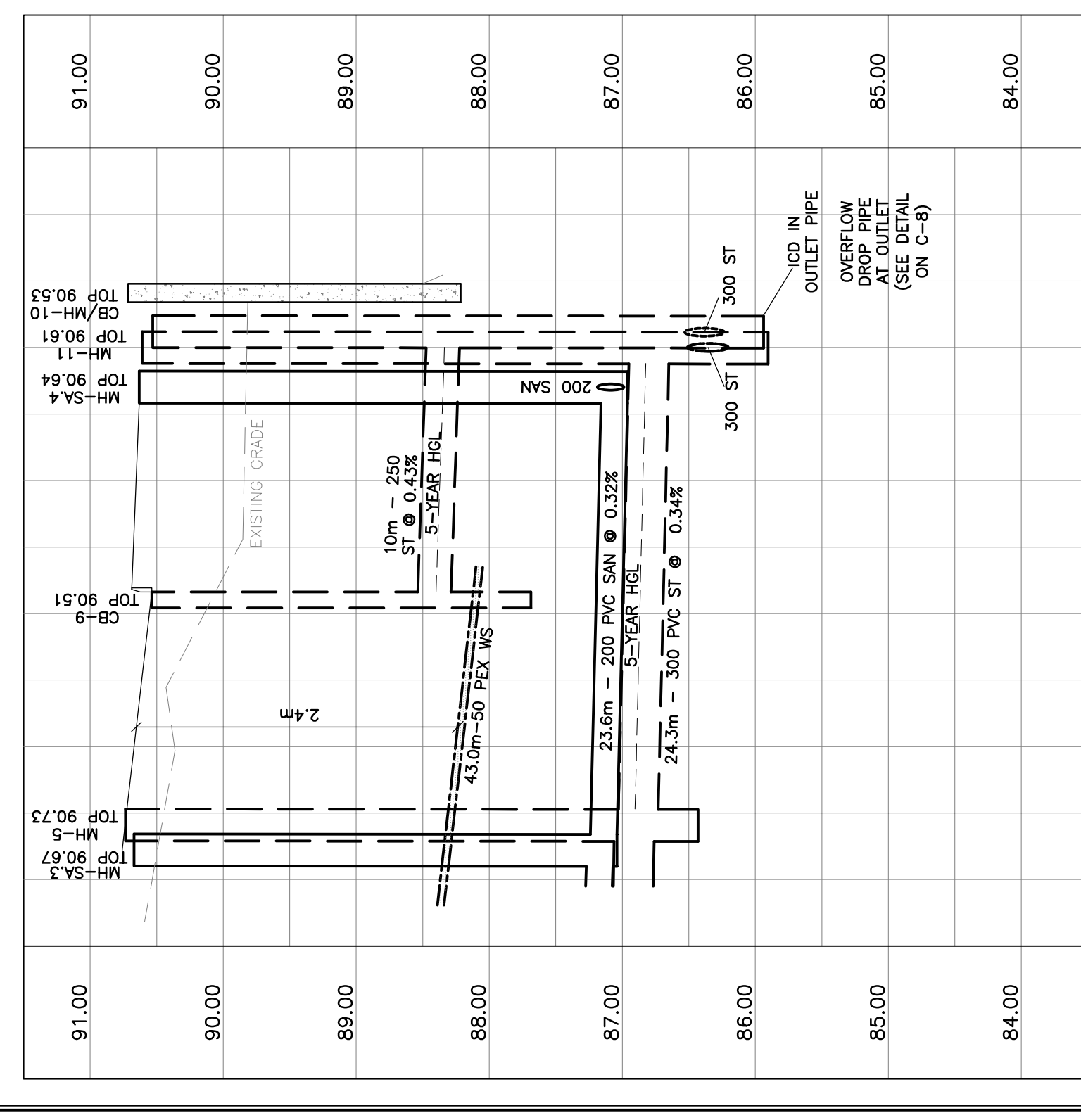
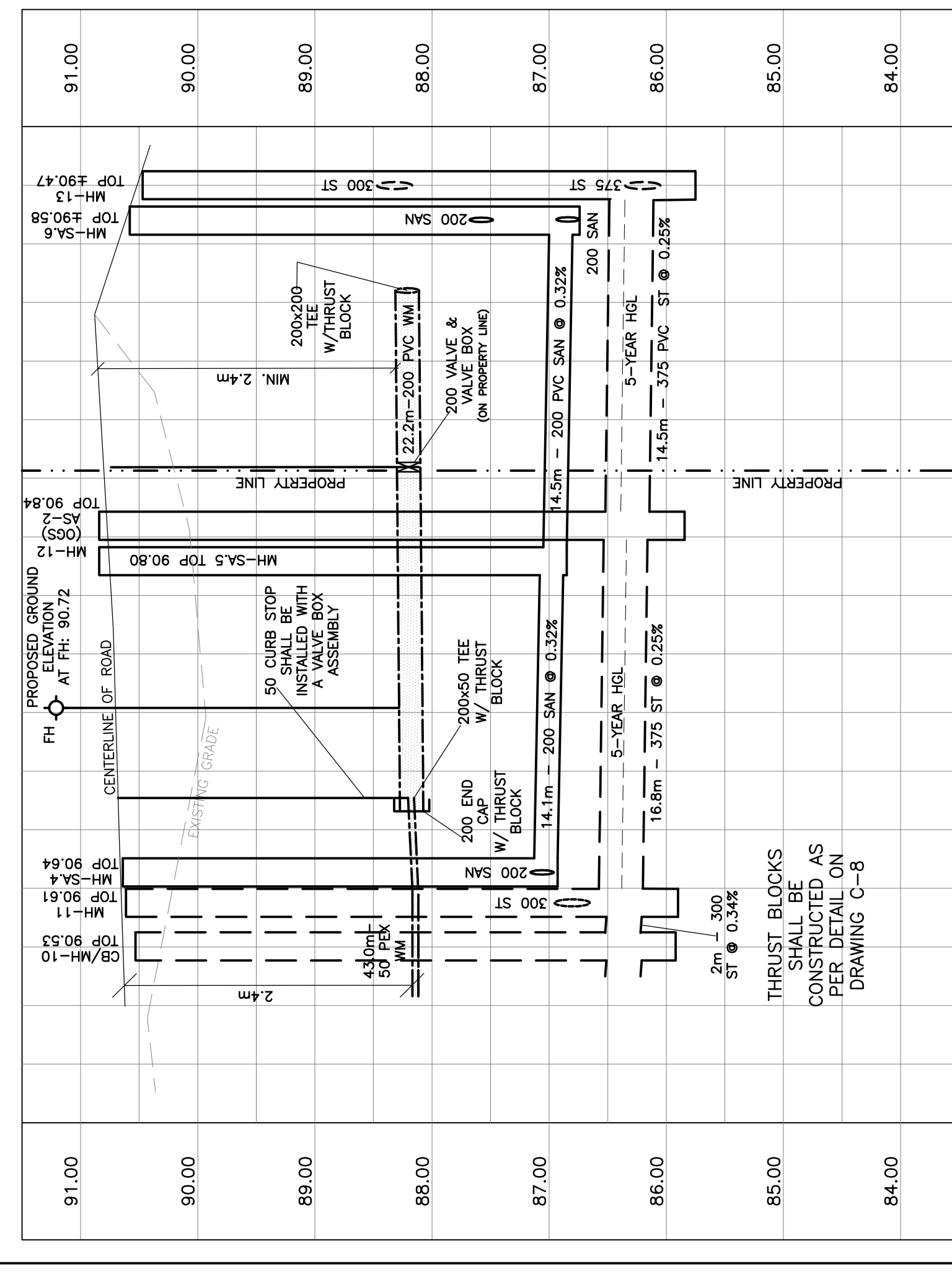
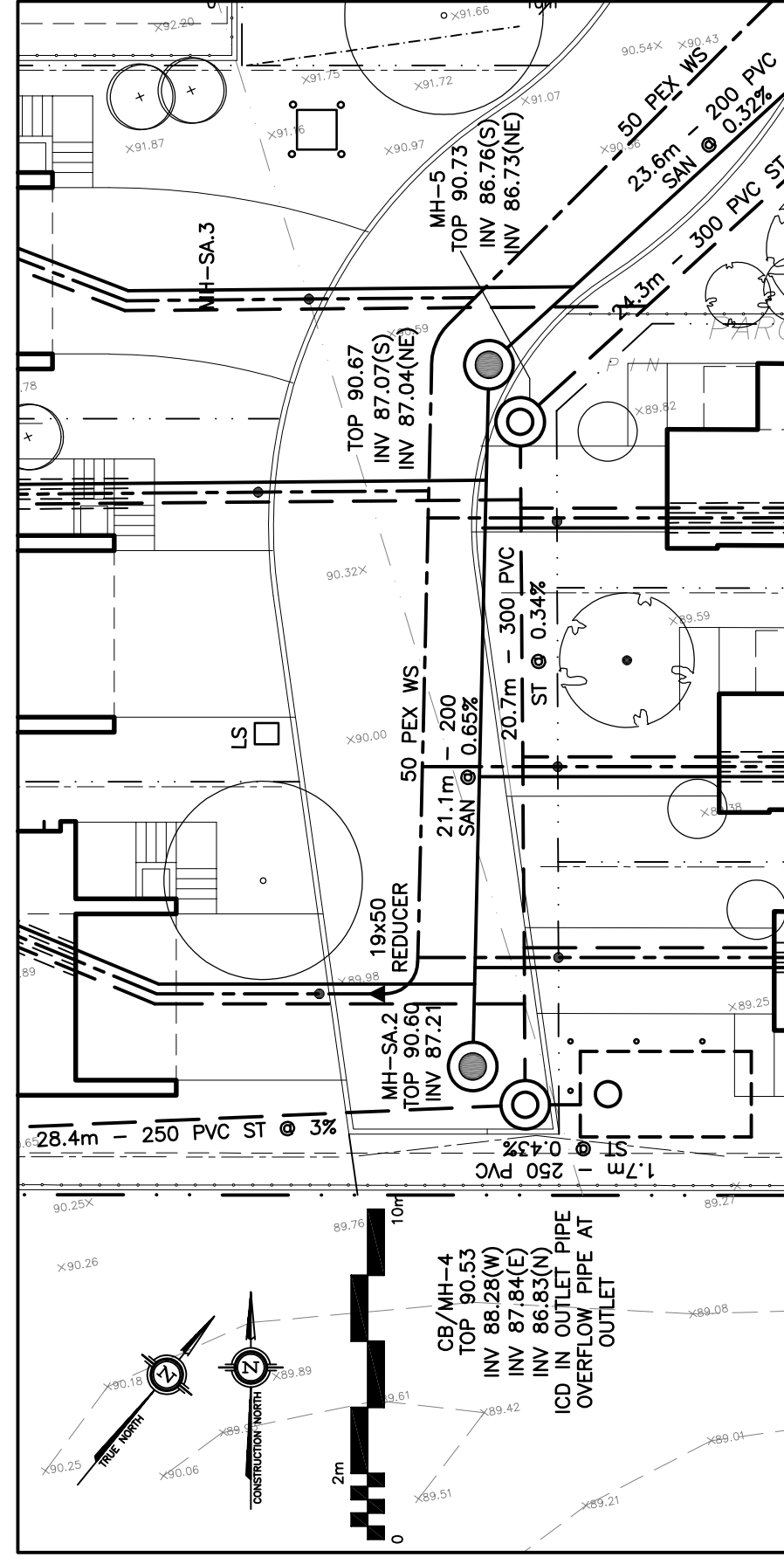
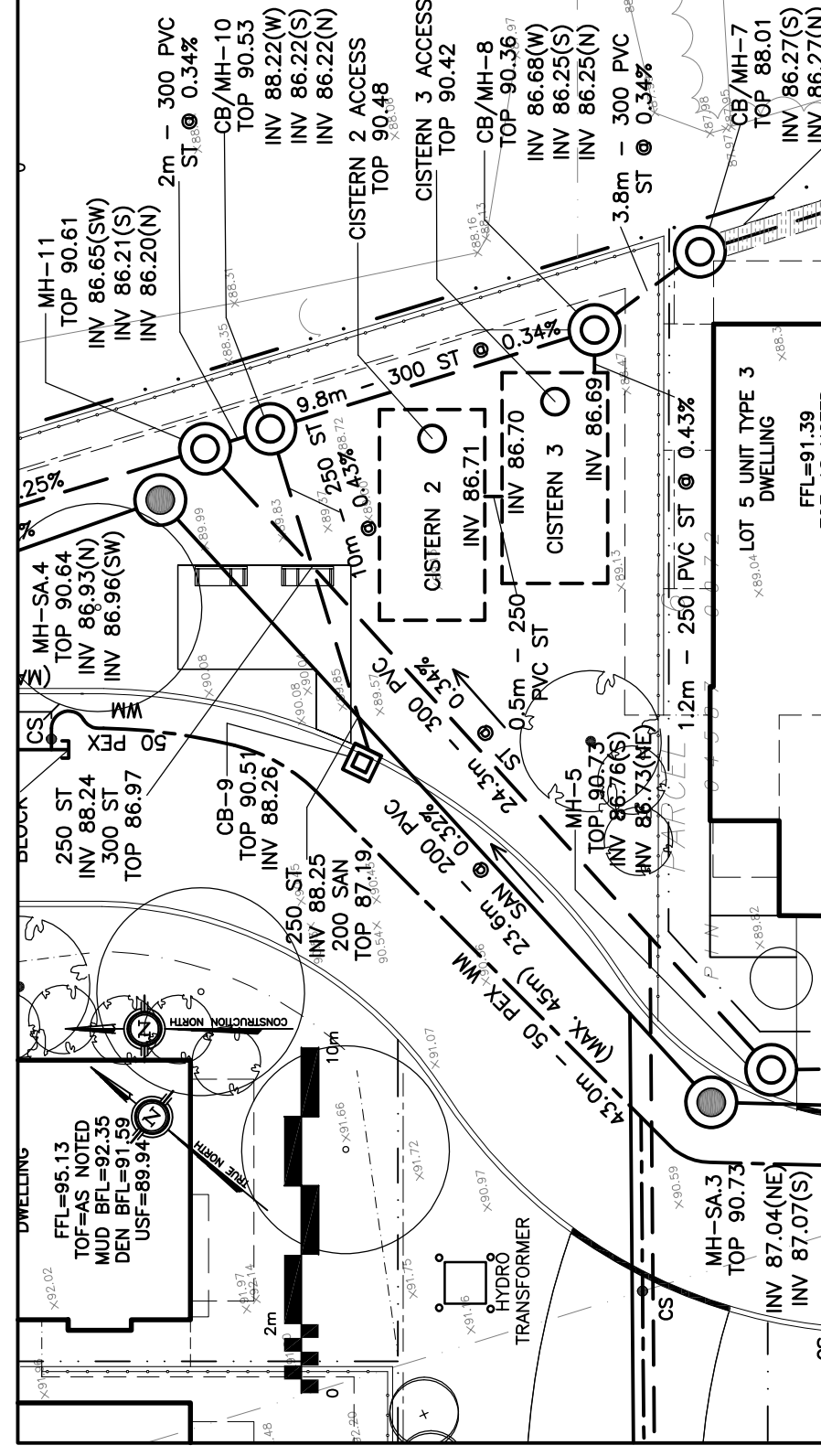
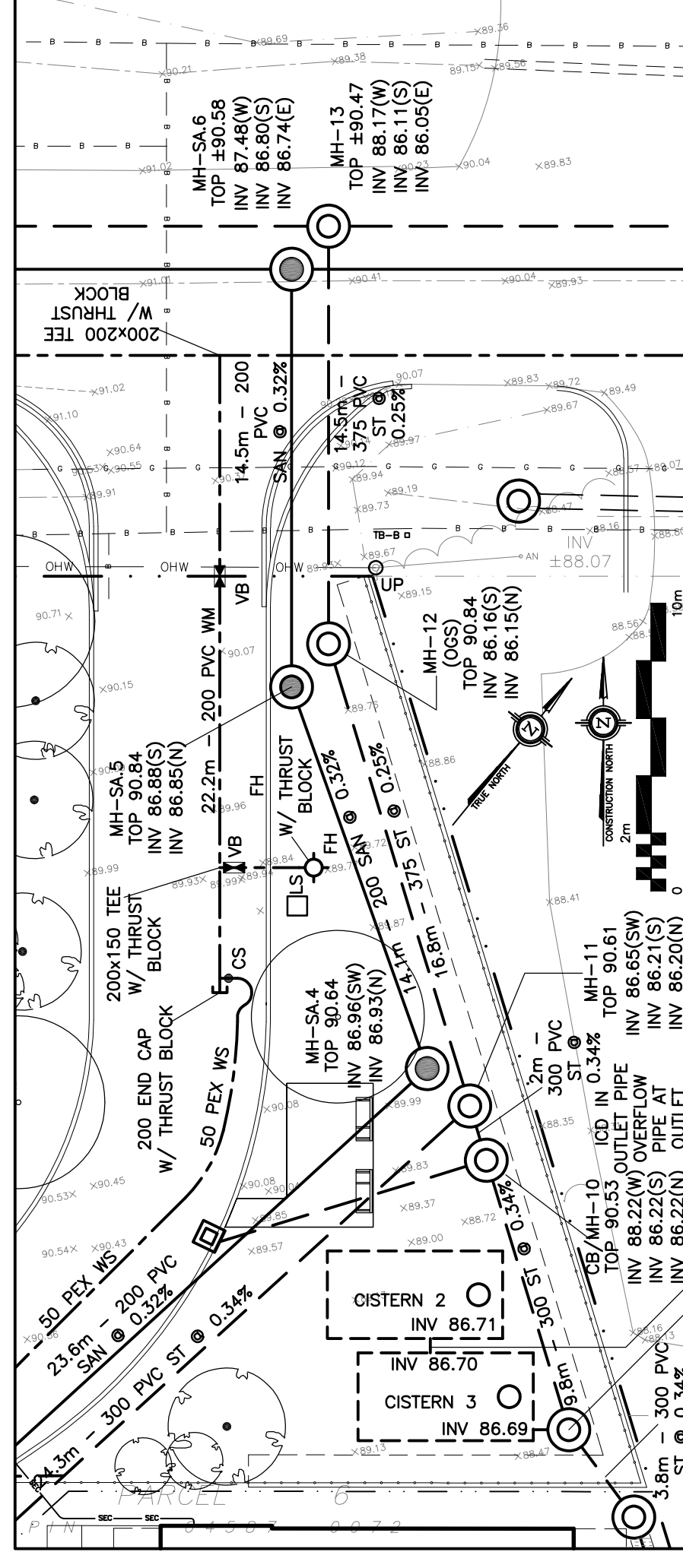
No.	DATE	REVISION
6	MAR 15-21	RE-ISSUED FOR APPROVAL
5	NOV 16-20	RE-ISSUED FOR APPROVAL
4	JUN 18-20	RE-ISSUED FOR APPROVAL
3	SEP 27-19	RE-ISSUED FOR APPROVAL
2	AUG 9-19	ISSUED FOR APPROVAL
1	JUN 14-19	PRELIMINARY

D. B. GRAY ENGINEERING INC.
 700 Long Point Circle
 Ottawa, Ontario
 613-425-8044
 dgray@dbgrayengineering.com

Project
**PROPOSED
 RESIDENTIAL DEVELOPMENT
 1164-1166 HIGHCROFT DR.**
 MANOTICK, ONTARIO

PLAN & PROFILE
PRIVATE ROAD

Drawing Title
 Drawing No. **C-13** of **14**
 Drawn: D.B.G.
 Hor. Scale: 1:200
 Vert. Scale: 1:40
 Date: JUN 14-19
 Job No.: 18035
 U.E. GRAY
 77016502
 since 19-07
 ONTARIO PROFESSIONAL ENGINEER
 NOT VALID UNLESS SIGNED & DATED



STATION FROM MH 13	STATION TO MH 13	ST INVERT	TOP OF WM	C/L OF ROAD
B+00.0	B+00.5	INV 88.17(S) INV 88.05(E)	88.31	90.76
B+00.5	B+01.0	INV 88.17(S) INV 88.05(E)	88.31	90.72
B+01.0	B+01.4	INV 88.17(S) INV 88.05(E)	88.31	90.72
B+01.4	B+01.6	INV 88.17(S) INV 88.05(E)	88.31	90.72
B+01.6	B+02.0	INV 88.17(S) INV 88.05(E)	88.31	90.72
B+02.0	B+02.3	INV 88.17(S) INV 88.05(E)	88.31	90.67
B+02.3	B+03.0	INV 88.17(S) INV 88.05(E)	88.31	90.62
B+03.0	B+03.6	INV 88.17(S) INV 88.05(E)	88.31	90.62

STATION FROM MH 13	STATION TO MH 13	ST INVERT	TOP OF WM	C/L OF ROAD
B+03.0	B+03.5	INV 88.17(S) INV 88.05(E)	88.28	90.62
B+03.5	B+04.0	INV 88.17(S) INV 88.05(E)	88.28	90.62
B+04.0	B+05.0	INV 88.17(S) INV 88.05(E)	88.28	90.76
B+05.0	B+05.5	INV 88.17(S) INV 88.05(E)	88.28	90.76
B+05.5	B+06.0	INV 88.17(S) INV 88.05(E)	88.28	90.76
B+06.0	B+07.0	INV 88.17(S) INV 88.05(E)	88.28	90.62
B+07.0	B+07.3	INV 88.17(S) INV 88.05(E)	88.28	90.62

STATION FROM CB/MH 4	STATION FROM MH 13	ST INVERT	TOP OF WM	C/L OF ROAD
B+07.3	B+07.5	INV 88.28(N) INV 87.84(E)	88.24	90.64
B+07.5	B+07.9	INV 88.28(N) INV 87.84(E)	88.24	90.64
B+07.9	B+08.0	INV 88.28(N) INV 87.84(E)	88.24	90.64
B+08.0	B+08.2	INV 88.28(N) INV 87.84(E)	88.24	90.64
B+08.2	B+08.6	INV 88.28(N) INV 87.84(E)	88.24	90.66
B+08.6	B+09.0	INV 88.28(N) INV 87.84(E)	88.24	90.66
B+09.0	B+09.2	INV 88.28(N) INV 87.84(E)	88.24	90.72
B+09.2	B+09.4	INV 88.28(N) INV 87.84(E)	88.24	90.72
B+09.4	B+09.7	INV 88.28(N) INV 87.84(E)	88.24	90.74
B+09.7	B+10.0	INV 88.28(N) INV 87.84(E)	88.24	90.74