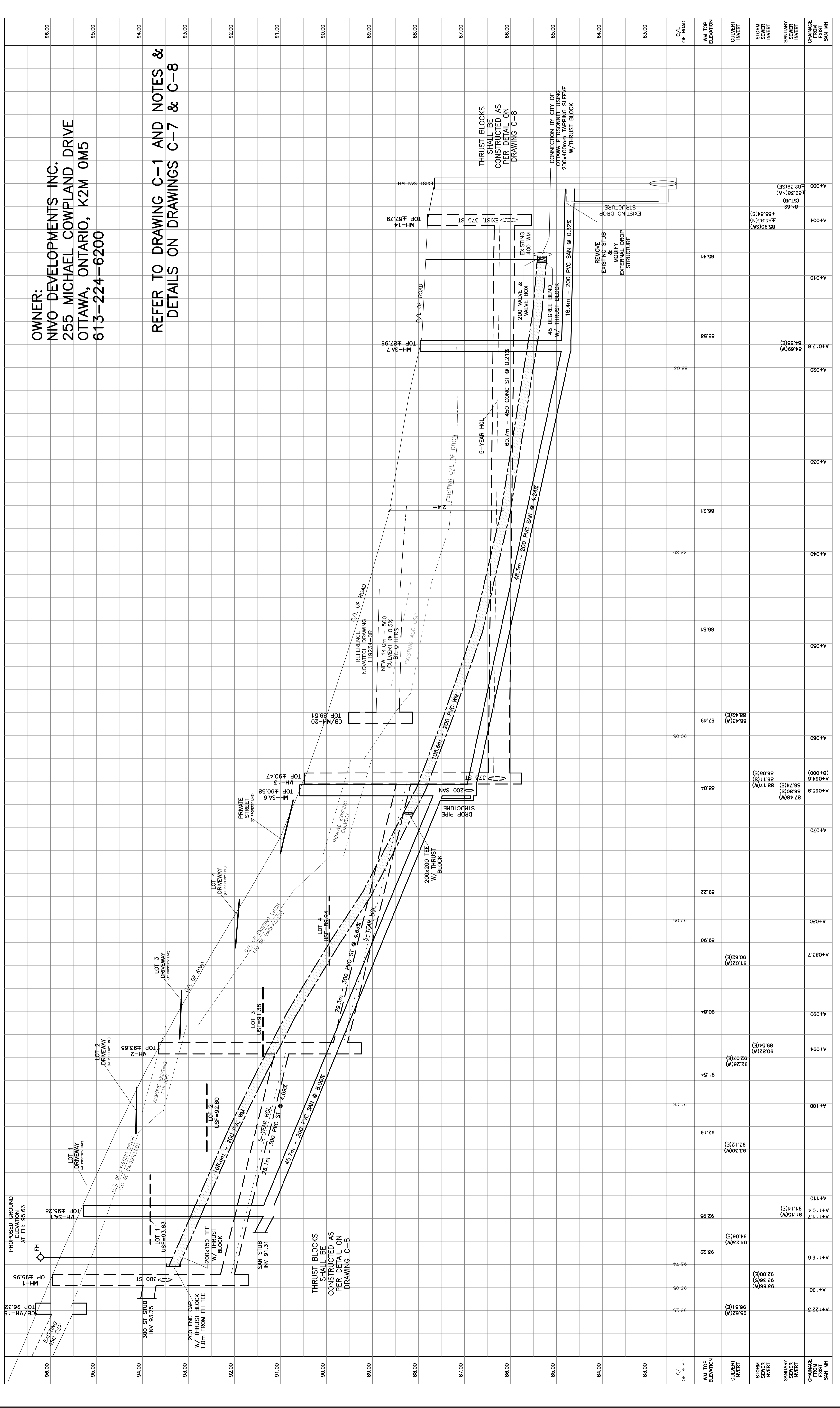
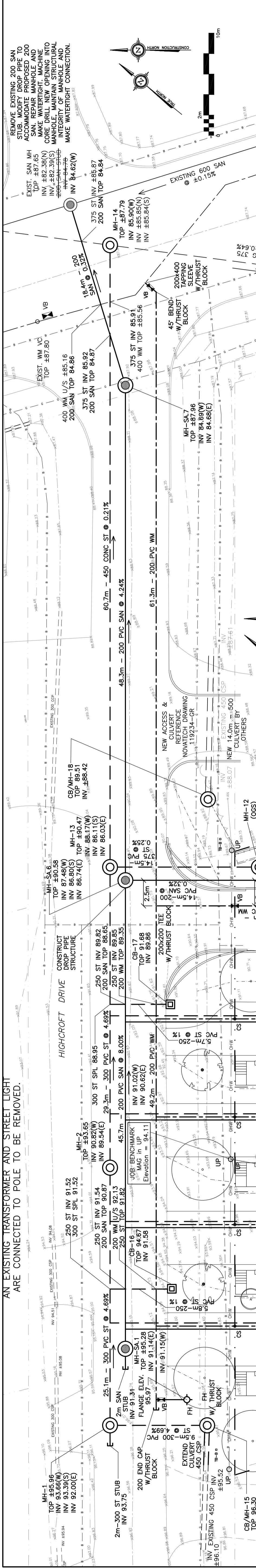


AN EXISTING TRANSFORMER AND STREET LIGHT ARE CONNECTED TO POLE TO BE REMOVED.

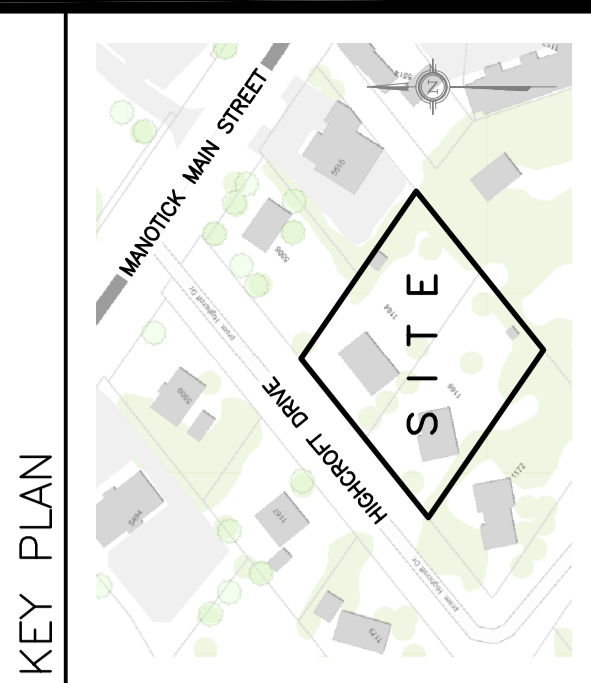


OWNER:  
**NVO DEVELOPMENTS INC.**  
 255 MICHAEL COMPLAND DRIVE  
 OTTAWA, ONTARIO, K2M 0M5  
 613-224-6200

REFER TO DRAWING C-1 AND NOTES & C-8  
 DETAILS ON DRAWINGS C-7 & C-8

**DRAWING LEGEND**

CB	CATCH BASIN
MH	MANHOLE
CB/MH	CATCH BASIN/MANHOLE
MH	SANITARY MANHOLE
SPL	SPRINGLINE OF PIPE
INV	INVERT OF PIPE
ST	SANITARY SEWER
ST	STORM SEWER
WS/WM	WATER SERVICE/WATERMAIN
CS	CURB STOP & STANDPOST
VB	VALVE & VALVE BOX
FH	FIRE HYDRANT
W	WATER METER
⊕	REMOTE WATER METER READOUT
⊕	EXISTING GRADE ELEVATION
---	PROPERTY LINE
---	FIRST FLOOR ELEVATION
---	TOP OF FOUNDATION
---	BASEMENT FLOOR ELEVATION
---	UNDERSIDE OF FOOTING



No.	DATE	REVISION
6	MAR 15-21	RE-ISSUED FOR APPROVAL
5	NOV 16-20	RE-ISSUED FOR APPROVAL
4	JUN 18-20	RE-ISSUED FOR APPROVAL
3	SEP 27-19	RE-ISSUED FOR APPROVAL
2	AUG 9-19	ISSUED FOR APPROVAL
1	JUN 14-19	PRELIMINARY

**D. B. GRAY ENGINEERING INC.**  
 700 Long Point Circle  
 Ottawa, Ontario  
 613-425-8044  
 dgray@dbgrayengineering.com

Project  
**PROPOSED RESIDENTIAL DEVELOPMENT**  
**1164-1166 HIGHCROFT DR.**  
 MANOTICK, ONTARIO

Drawing Title  
**PLAN & PROFILE**  
**HIGHCROFT DR**

Drawn: D.B.G.  
 Hor. Scale: 1:200  
 Vert. Scale: 1:40  
 Date: JUN 14-19  
 Job No.: 180335  
 Drawing No.:  
**C-12**  
 of 14  
 NOT VALID UNLESS SIGNED & DATED