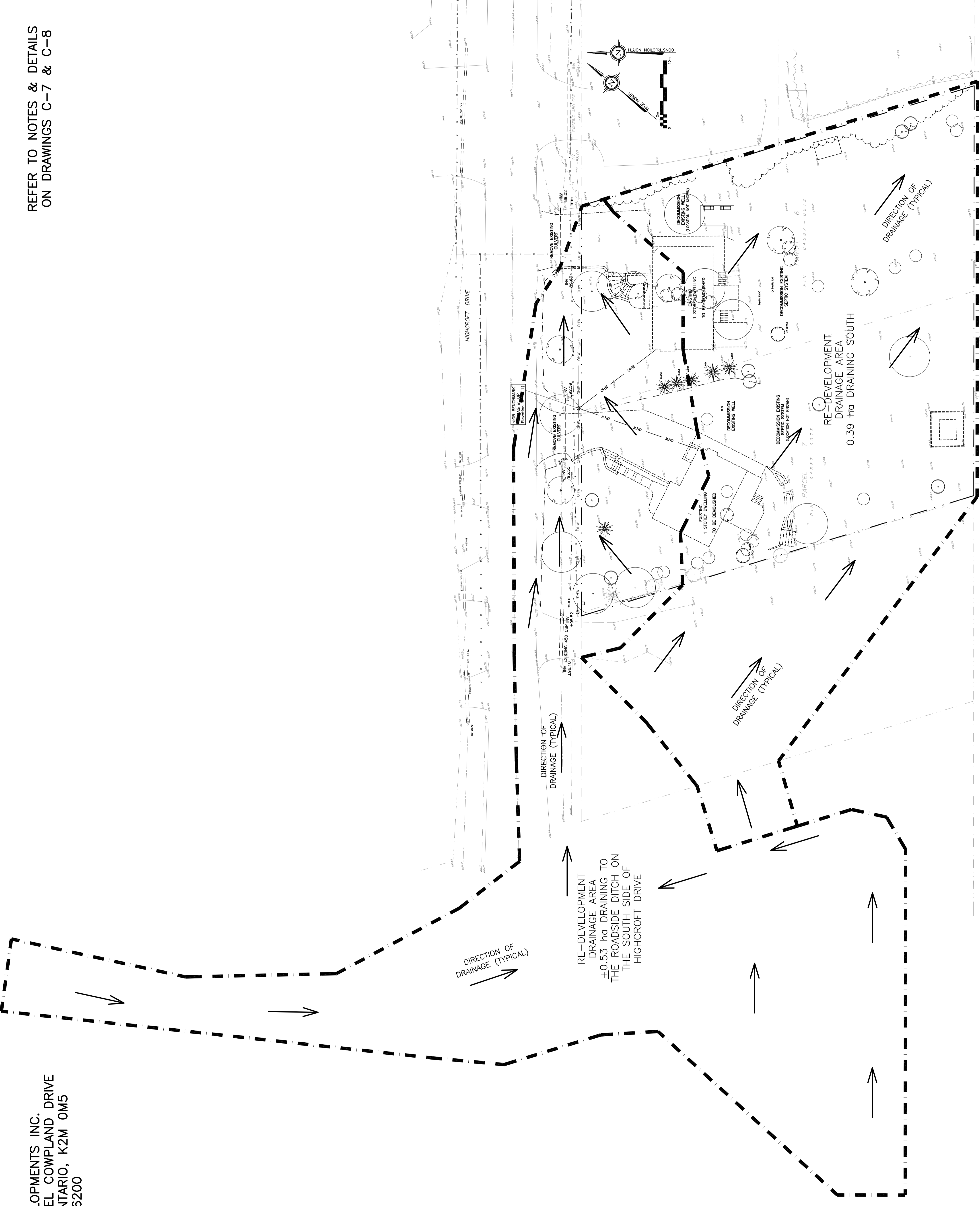


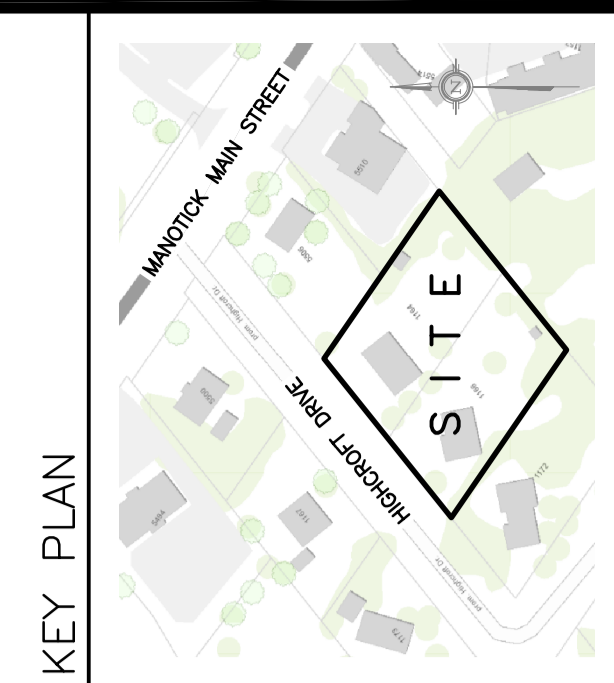
OWNER:  
 NIVO DEVELOPMENTS INC.  
 255 MICHAEL COMPLAND DRIVE  
 OTTAWA, ONTARIO, K2M 0M5  
 613-224-6200

REFER TO NOTES & DETAILS  
 ON DRAWINGS C-7 & C-8



**DRAWING LEGEND**

CB	CATCH BASIN
MH	MANHOLE
CB/MH	CATCH BASIN/MANHOLE
MH	SANITARY MANHOLE
±67.89	EXISTING GRADE ELEVATION
+67.89	PROPOSED GRADE ELEVATION
2%	EXISTING SLOPE OF GRADE
2%	PROPOSED SLOPE OF GRADE
T.O.S.	TOP OF SLOPE
B.O.S.	BOTTOM OF SLOPE
---	CENTERLINE OF SWALE
---	PROPERTY LINE
---	SILT FENCE BARRIER
---	150mm CURB/DEPRESSED CURB
---	LIGHT-DUTY PAVEMENT
---	HEAVY-DUTY PAVEMENT
---	CONCRETE
---	LANDSCAPE
FFL	FIRST FLOOR ELEVATION
TOF	TOP OF FOUNDATION
BFL	BASEMENT FLOOR ELEVATION
USF	UNDERSIDE OF FOOTING



No.	DATE	REVISION
4	MAR 15-21	RE-ISSUED FOR APPROVAL
3	NOV 16-20	RE-ISSUED FOR APPROVAL
2	JUN 18-20	RE-ISSUED FOR APPROVAL
1	MAY 5-20	ISSUED FOR COORDINATION

**D. B. GRAY ENGINEERING INC.**  
 700 Long Point Circle  
 Ottawa, Ontario  
 613-425-8044  
 dgray@dbgrayengineering.com

**PROPOSED  
 RESIDENTIAL DEVELOPMENT  
 1164-1166 HIGHCROFT DR.  
 MANOTICK, ONTARIO**

**EXISTING CONDITIONS, REMOVALS  
 & DECOMMISSIONING AND  
 PRE-DEVELOPMENT DRAINAGE PLAN**

Engineer's Seal  
**PROFESSIONAL ENGINEER**  
 O.C.E. GRAY  
 77016502  
 SINCE 19-20  
 REG. NO. OF  
**C-2**  
 of **14**

NOT VALID UNLESS  
 SIGNED & DATED