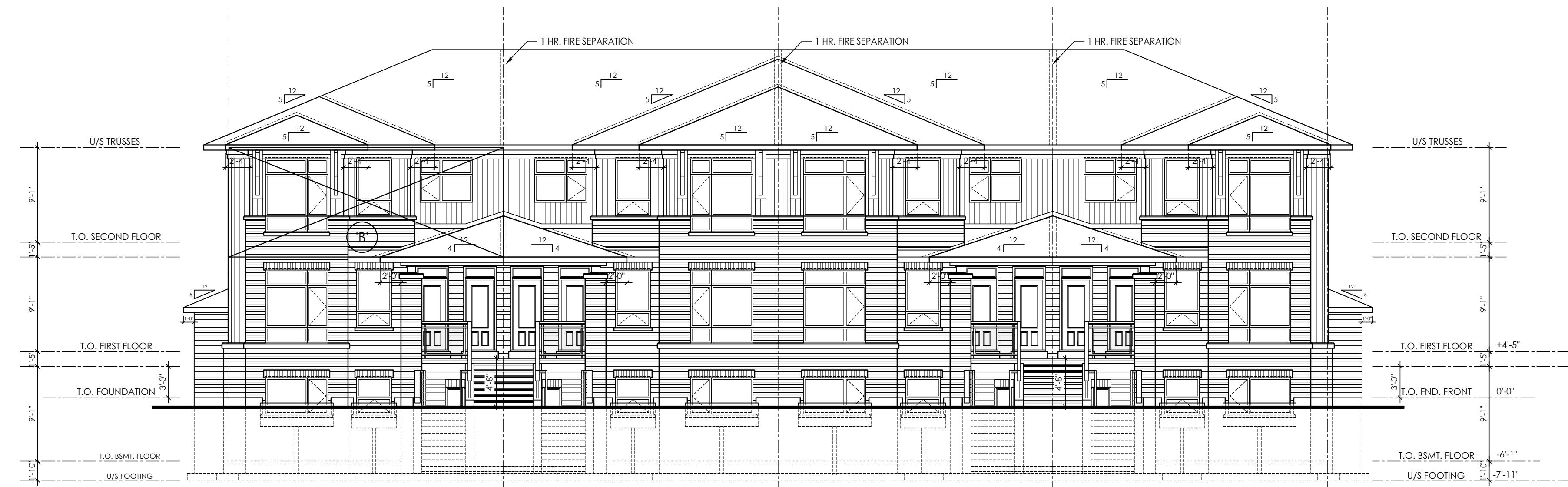


END UNIT  
UNIT 'A' - 211  
UNIT 'B' - 212  
UNIT 'C' - 213

BLOCK 2 - SIDE (WEST) ELEVATION



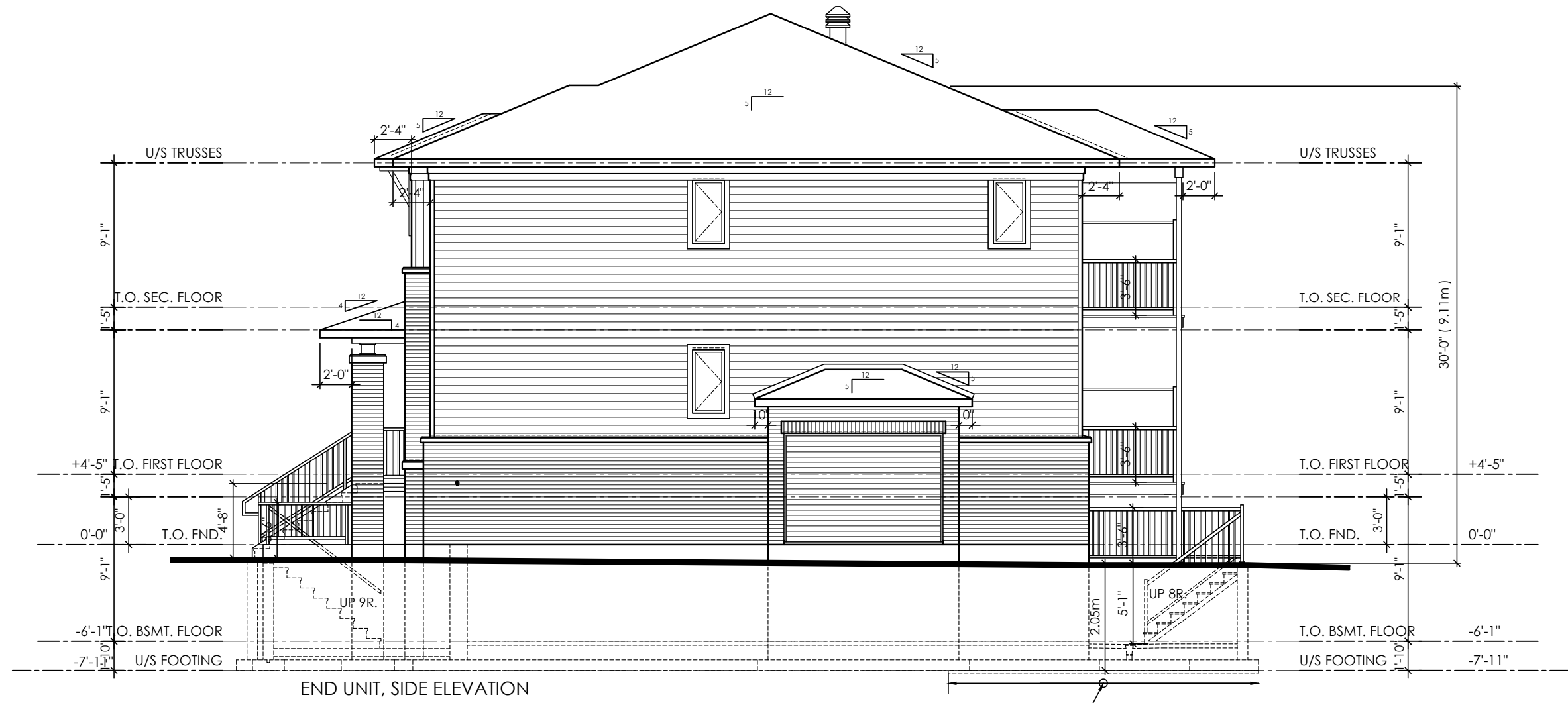
END UNIT  
UNIT 'A' - 211  
UNIT 'B' - 212  
UNIT 'C' - 213

MID UNIT REV.  
UNIT 'A' - 221  
UNIT 'B' - 222  
UNIT 'C' - 223

MID UNIT  
UNIT 'A' - 231  
UNIT 'B' - 232  
UNIT 'C' - 233

END UNIT REV.  
UNIT 'A' - 241  
UNIT 'B' - 242  
UNIT 'C' - 243

BLOCK 2 - FRONT (SOUTH) ELEVATION



END UNIT REV.  
UNIT 'A' - 241  
UNIT 'B' - 242  
UNIT 'C' - 243

BLOCK 2 - SIDE (EAST) ELEVATION



END UNIT REV.  
UNIT 'A' - 241  
UNIT 'B' - 242  
UNIT 'C' - 243

MID UNIT  
UNIT 'A' - 231  
UNIT 'B' - 232  
UNIT 'C' - 233

MID UNIT REV.  
UNIT 'A' - 221  
UNIT 'B' - 222  
UNIT 'C' - 223

END UNIT  
UNIT 'A' - 211  
UNIT 'B' - 212  
UNIT 'C' - 213

BLOCK 2 - REAR (NORTH) ELEVATION

REFER TO 3/16" PLANS FOR DIMENSIONS & DETAILS NOT SHOWN.

**M. David Blakely  
Architect Inc.**  
2200 Prince of Wales Dr. - Suite 101  
Ottawa, Ontario K2E 6Z9  
Phone (613) 226-8811 Fax (613) 226-7942

**GENERAL NOTES:**

1. THE CONTRACTOR IS RESPONSIBLE FOR CHECKING AND VERIFYING ALL DIMENSIONS. ANY DISCREPANCY MUST BE REPORTED TO M. DAVID BLAKELY ARCHITECT INC.
2. ALL WORK AND MATERIALS TO BE IN COMPLIANCE WITH ALL CODES, REGULATIONS, AND BY-LAWS.
3. ADDITIONAL DRAWINGS MAY BE ISSUED FOR CLARIFICATION TO ASSIST THE PROPER EXECUTION OF WORK. SUCH DRAWINGS WILL HAVE THE SAME MEANING AND INTENT AS IF THEY WERE INCLUDED WITH THE PLANS IN CONTRACT DOCUMENTS.
4. DO NOT SCALE DRAWINGS.
5. THIS DRAWING SHALL NOT BE USED OR COPIED WITHOUT THE AUTHORIZATION OF THE ARCHITECT.
6. THIS DRAWING SHALL NOT BE USED FOR PERMIT OR CONSTRUCTION UNLESS THE DRAWING BEARS THE ARCHITECT'S SEAL AND SIGNATURE.
7. THIS REPRODUCTION SHALL NOT BE ALTERED.

ARCHITECT SEAL:

NO.	DATE	DESCRIPTION	INT.	NO.	DATE	DESCRIPTION	INT.
1.	29/03/21	FOR SITE PLAN	SM	13.			
2.				14.			
3.				15.			
4.				16.			
5.				17.			
6.				18.			
7.				19.			
8.				20.			
9.				21.			
10.				22.			
11.				23.			
12.				24.			

A - DETAIL NUMBER  
B - SHEET NUMBER (DETAIL REQUIRED)  
C - SHEET NUMBER (DETAIL LOCATION)

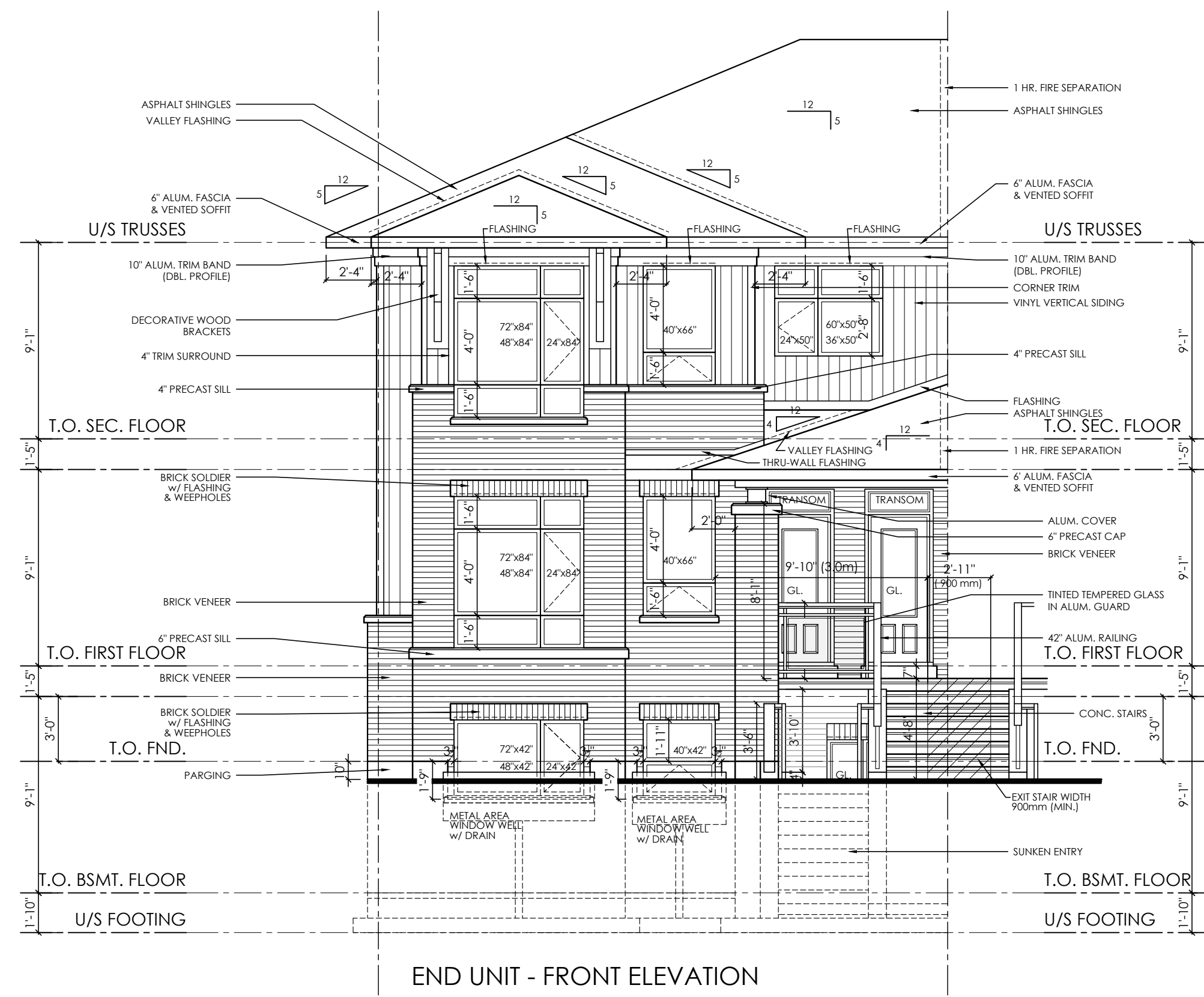
PROJECT: **TERRACE FLATS  
KANATA WEST  
1620 MAPLE GROVE - BLOCK 29  
OTTAWA, ONT.**

CLIENT: **RICH CRAFT  
Group Of Companies**

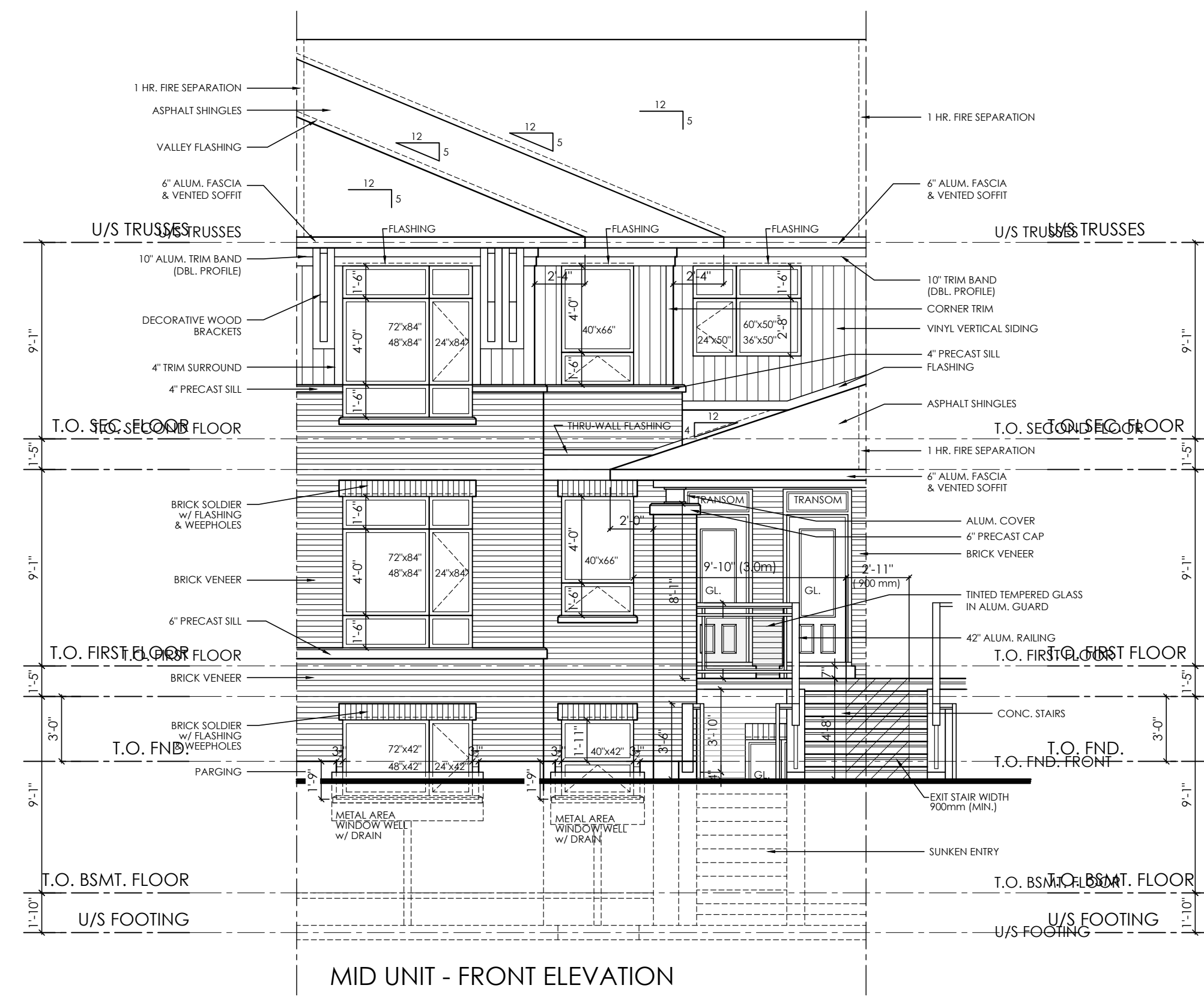
DRAWING TITLE: **BLOCK 2  
ELEVATIONS**

DATE: **MARCH, 2018.** SCALE: **1/8" = 1'-0"** SHEET No.: **B2-2**

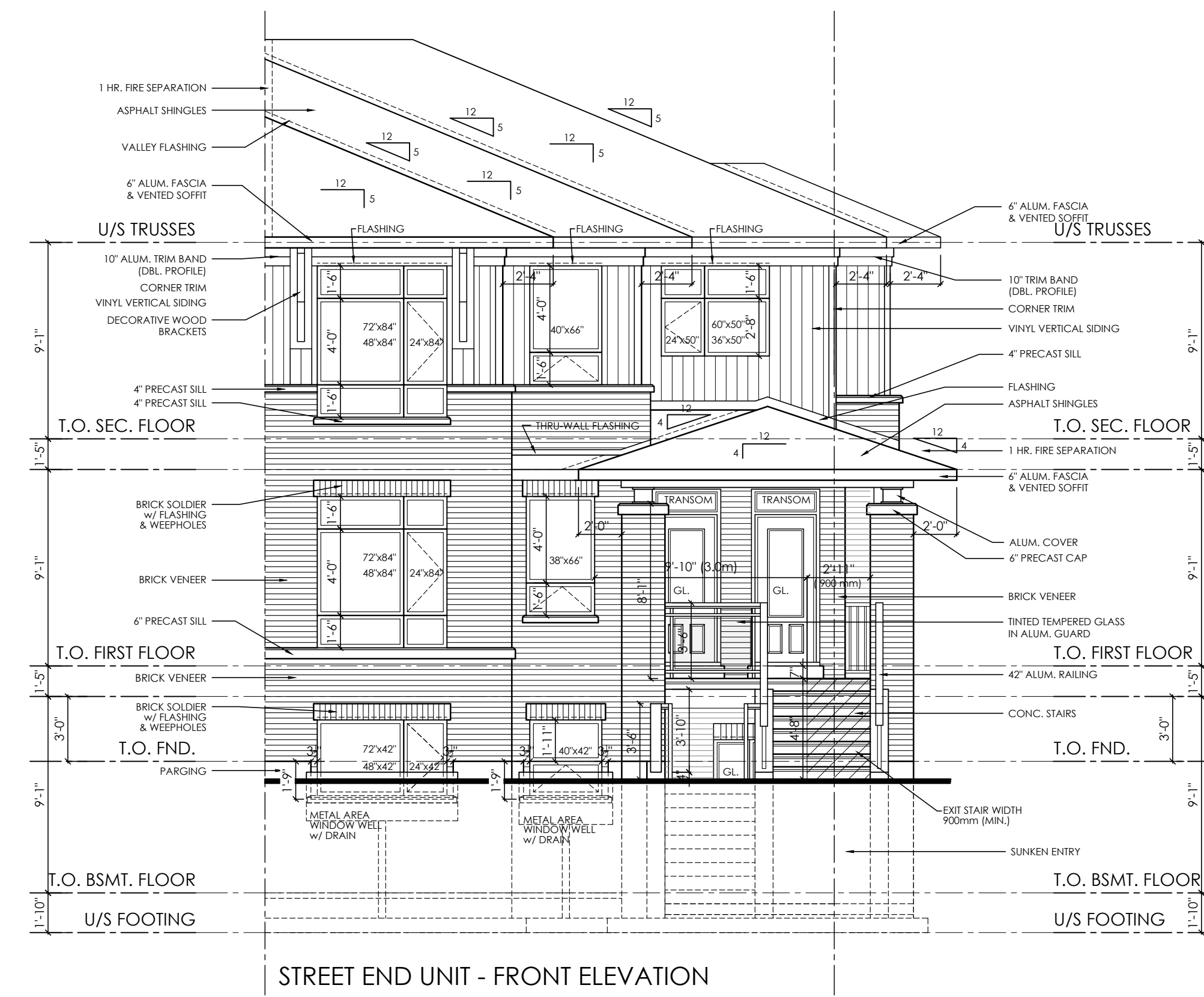
DRAWN BY: **SBM** CHECKED: **MDB**



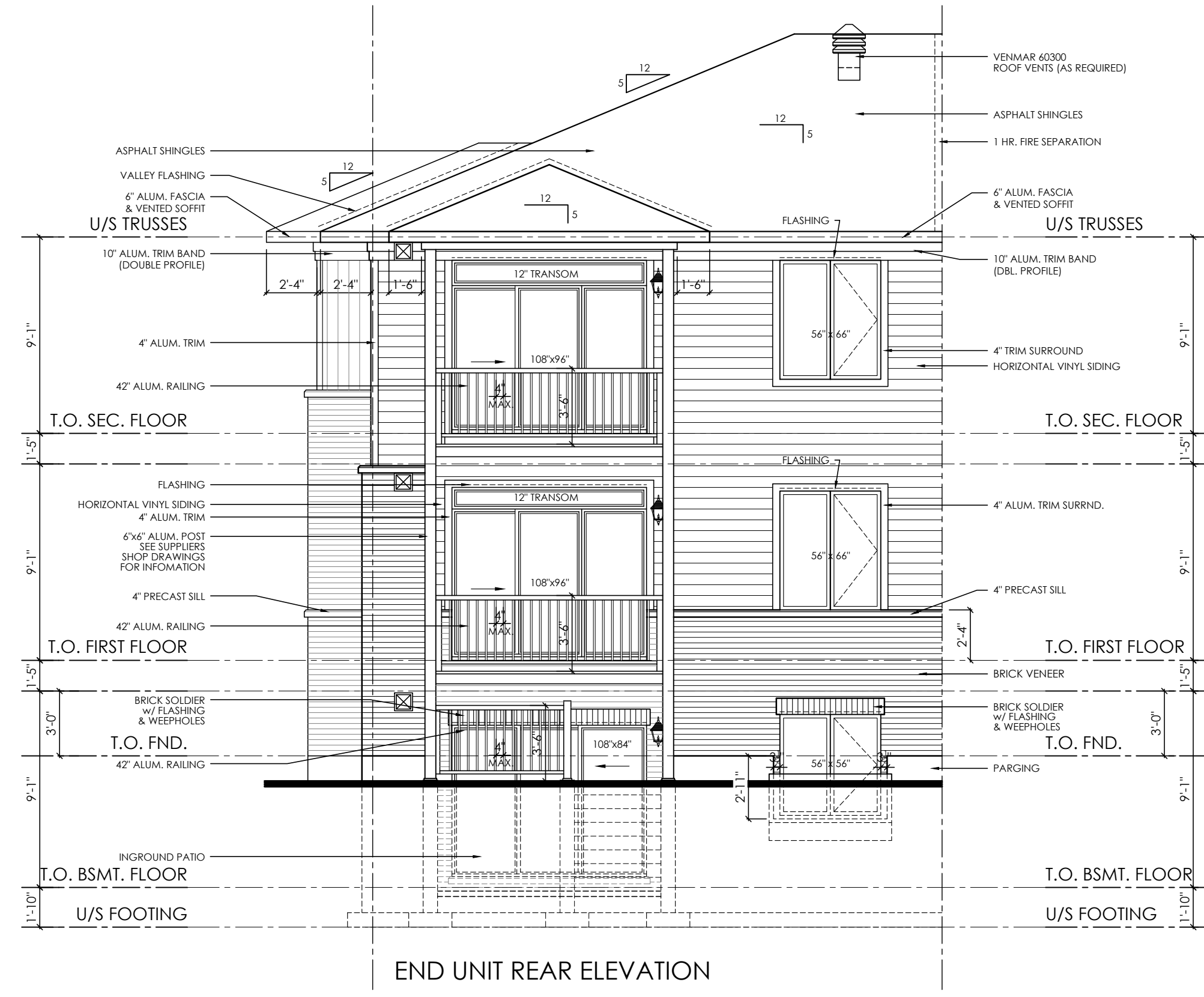
END UNIT - FRONT ELEVATION



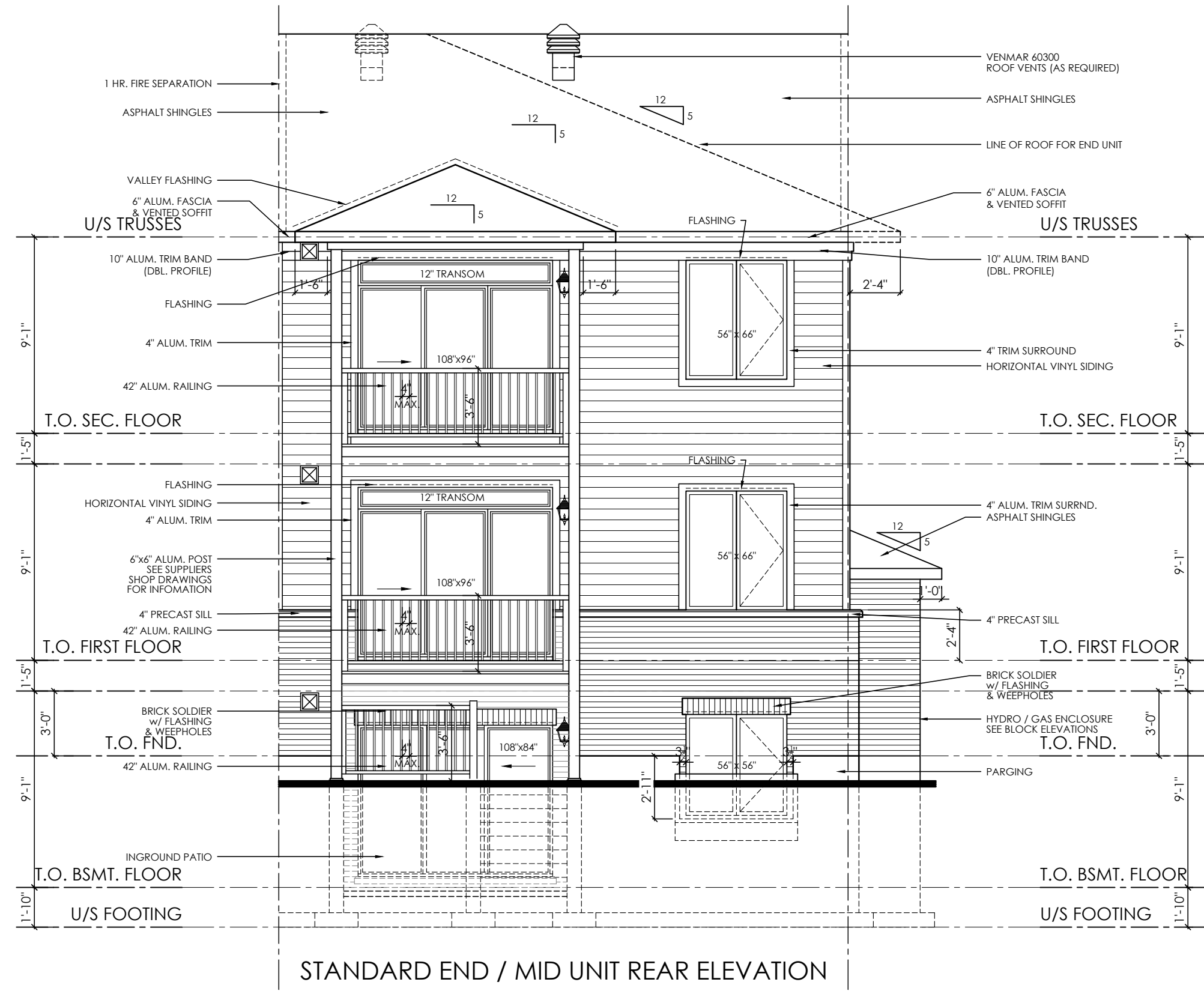
MID UNIT - FRONT ELEVATION



STREET END UNIT - FRONT ELEVATION



END UNIT REAR ELEVATION



STANDARD END / MID UNIT REAR ELEVATION

**M. David Blakely**  
Architect Inc.  
2200 Prince of Wales Dr. - Suite 101  
Ottawa, Ontario K2E 6Z9  
Phone (613) 226-8811 Fax (613) 226-7942

**GENERAL NOTES:**

1. THE CONTRACTOR IS RESPONSIBLE FOR CHECKING AND VERIFYING ALL DIMENSIONS. ANY DISCREPANCY MUST BE REPORTED TO M. DAVID BLAKELY ARCHITECT INC.
2. ALL WORK AND MATERIALS TO BE IN COMPLIANCE WITH ALL CODES, REGULATIONS, AND BY-LAWS.
3. ADDITIONAL DRAWINGS MAY BE ISSUED FOR CLARIFICATION TO ASSIST THE PROPER EXECUTION OF WORK. SUCH DRAWINGS WILL HAVE THE SAME MEANING AND INTENT AS IF THEY WERE INCLUDED WITH THE PLANS IN CONTRACT DOCUMENTS.
4. DO NOT SCALE DRAWINGS.
5. THIS DRAWING SHALL NOT BE USED OR COPIED WITHOUT THE AUTHORIZATION OF THE ARCHITECT.

6. THIS DRAWING SHALL NOT BE USED FOR PERMIT OR CONSTRUCTION UNLESS THE DRAWING BEARS THE ARCHITECT'S SEAL AND SIGNATURE.

7. THIS REPRODUCTION SHALL NOT BE ALTERED.

**POST SCHEDULE**

P1 - 3" DIA. ADJUSTABLE STEEL TELEPOST	8500 POUND CAP. (MIN.)
P2 - 2"x4" OR 8" (AS APPLICABLE)	
P3 - 3"x4" OR 8" (AS APPLICABLE)	
P4 - 4"x4" OR 8" (AS APPLICABLE)	
P5 - 5"x4" OR 8" (AS APPLICABLE)	
P6 - HSS 3"x3"x1/8" C/W 5"x3/8" B. PL. & CAP PL.	

**BRICK LINTEL SCHEDULE**

OPENING UP TO	ANGLE SIZE
5'-0"	L 3 1/2"x3 1/2"x5/16"
7'-0"	L 4"x3 1/2"x5/16"
8'-0"	L 5"x3 1/2"x5/16"
9'-0"	L 5"x3 1/2"x3/8"
10'-0"	L 6"x4"x3/8"

ARCHITECT SEAL:

NO.	DATE	DESCRIPTION	REVISED	NO.	DATE	DESCRIPTION	REVISED
11.	15/03/18	FOR MOUNTSHANNON DR. / FOR PERMIT	SM	23.			
10.	24/06/16	AS PER STRUCTURAL / CITY COMMENTS	SM	22.			
9.	25/05/16	BLOCK 2 - FOR STRUCTURAL REVIEW	SM	21.			
8.	08/03/16	REVISED FOR BLOCK 3	SM	20.			
7.	27/11/15	ISSUED FOR CONSTRUCTION	SM	19.			
6.	23/09/15	BLOCKS 2 & 3 - FOR PERMIT	SM	18.			
5.	18/12/14	GENERAL REV. AS PER BLOCK 1	SM	17.			
4.	15/10/14	REVISED FRONT PORCH - ADDED BRICK	SM	16.			
3.	27/01/14	AS PER STRUCTURAL / FOR PERMIT	SM	15.			
2.	06/06/13	FOR STRUCTURAL REVIEW	SM	14.			
1.	20/05/13	FOR REVIEW	SM	13.	29/03/21	FOR SITE PLAN - BLOCK 29 KANATA WEST	SM
				12.	15/08/18	REVISED FOUNDATION ELEVATIONS	SM

A - DETAIL NUMBER  
B - SHEET NUMBER (DETAIL REQUIRED)  
C - SHEET NUMBER (DETAIL LOCATION)

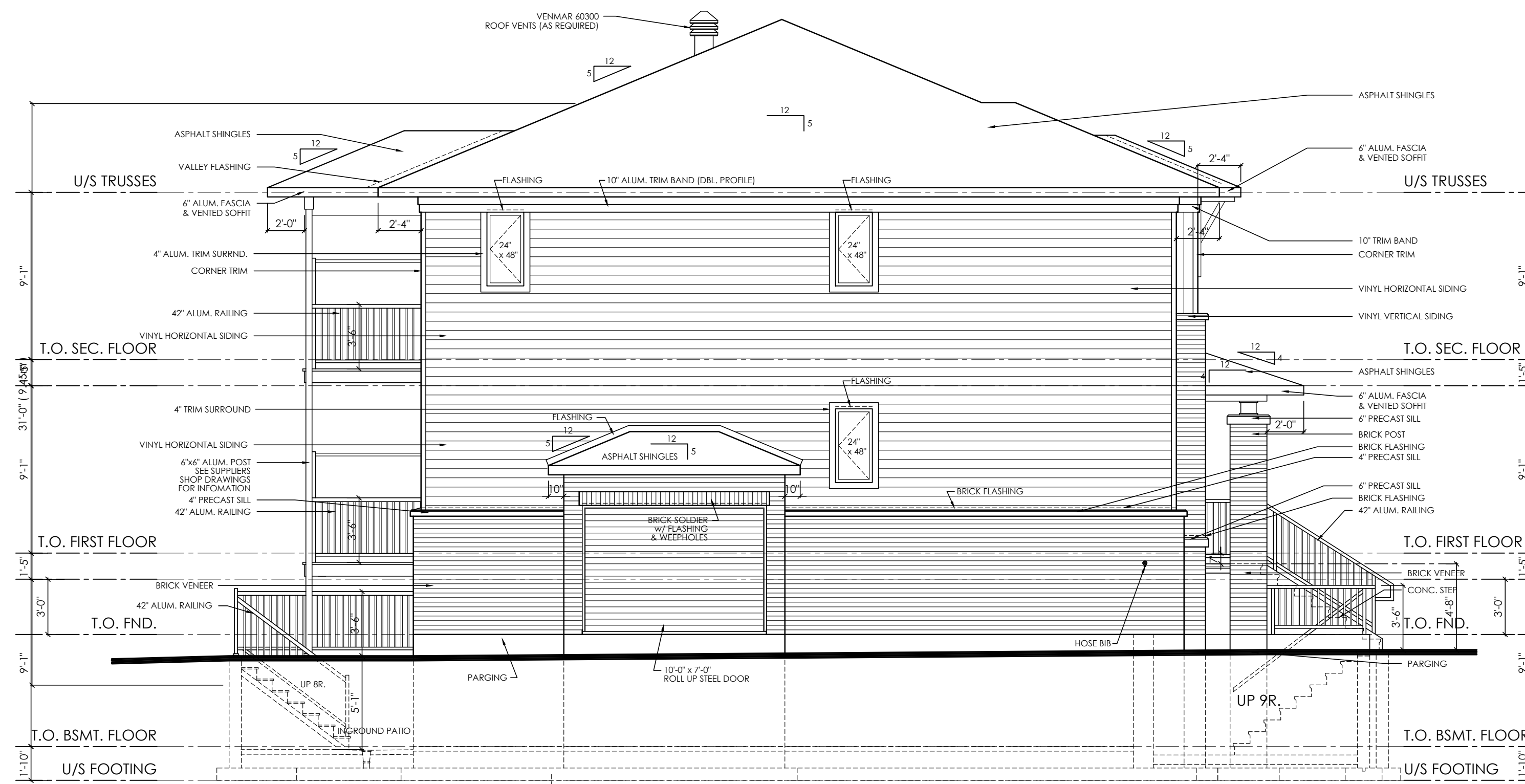
PROJECT: **TERRACE FLATS**  
**KANATA WEST**  
**1620 MAPLE GROVE - BLOCK 29**  
**OTTAWA, ONT.**

CLIENT: **RICH CRAFT**  
Group Of Companies

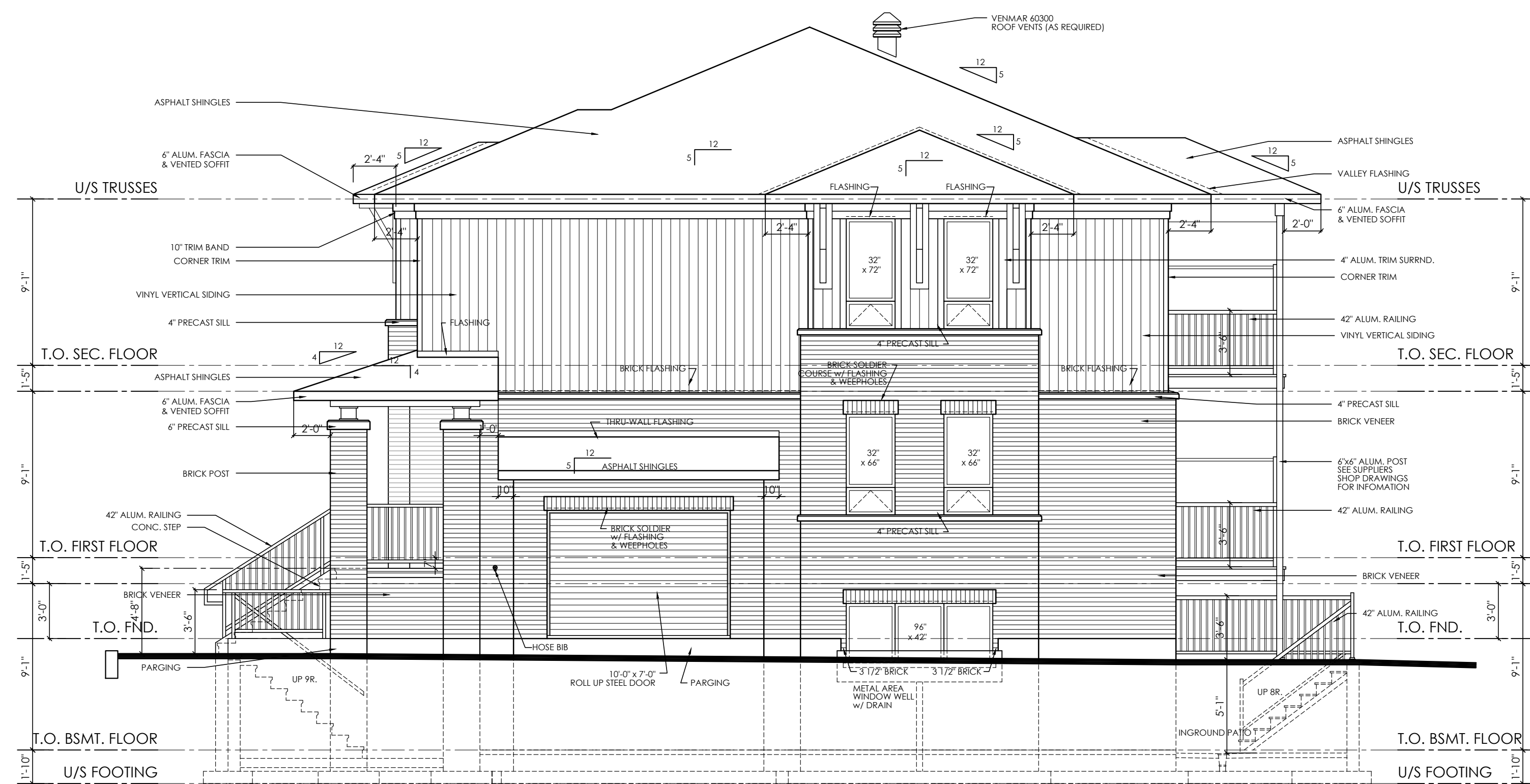
DRAWING TITLE: **ELEVATIONS**

DATE: **MAY, 2013.** SCALE: **3/16" = 1'-0"** SHEET NO.: **A-4**

DRAWN BY: **SBM** CHECKED: **MDB**



END UNIT, SIDE ELEVATION w/ HYDRO/GAS METER ENCLOSURE



STREET END UNIT, SIDE ELEVATION w/ GAS METER ENCLOSURE

**M. David Blakely Architect Inc.**  
 2200 Prince of Wales Dr. - Suite 101  
 Ottawa, Ontario K2E 6Z9  
 Phone (613) 226-8811 Fax (613) 226-7942

**GENERAL NOTES:**  
 1. THE CONTRACTOR IS RESPONSIBLE FOR CHECKING AND VERIFYING ALL DIMENSIONS. ANY DISCREPANCY MUST BE REPORTED TO M. DAVID BLAKELY ARCHITECT INC.  
 2. ALL WORK AND MATERIALS TO BE IN COMPLIANCE WITH ALL CODES, REGULATIONS, AND BY-LAWS.  
 3. ADDITIONAL DRAWINGS MAY BE ISSUED FOR CLARIFICATION TO ASSIST THE PROPER EXECUTION OF WORK. SUCH DRAWINGS WILL HAVE THE SAME MEANING AND INTENT AS IF THEY WERE INCLUDED WITH THE PLANS IN CONTRACT DOCUMENTS.  
 4. DO NOT SCALE DRAWINGS.  
 5. THIS DRAWING SHALL NOT BE USED OR COPIED WITHOUT THE AUTHORIZATION OF THE ARCHITECT.

6. THIS DRAWING SHALL NOT BE USED FOR PERMIT OR CONSTRUCTION UNLESS THE DRAWING BEARS THE ARCHITECT'S SEAL AND SIGNATURE.  
 7. THIS REPRODUCTION SHALL NOT BE ALTERED.

**POST SCHEDULE**

P1 - 3" DIA. ADJUSTABLE STEEL TELEPOST	8500 POUND CAP. (MIN.)
P2 - 2"x4x4 OR 8" (AS APPLICABLE)	
P3 - 3"x4x4 OR 8" (AS APPLICABLE)	
P4 - 4"x4x4 OR 8" (AS APPLICABLE)	
P5 - 5"x4x4 OR 8" (AS APPLICABLE)	
P6 - HSS 3"x3"x1/8" C/W 5"x3/8"x8" B. PL. & CAP PL.	

**BRICK LINTEL SCHEDULE**

OPENING UP TO	ANGLE SIZE
5'-0"	L 3 1/2"x3 1/2"x5/16"
7'-0"	L 4"x3 1/2"x5/16"
8'-0"	L 5"x3 1/2"x5/16"
9'-0"	L 5"x3 1/2"x3/8"
10'-0"	L 6"x4"x3/8"

**ARCHITECT SEAL:**

NO.	DATE	DESCRIPTION	INT.	NO.	DATE	DESCRIPTION	INT.
11.	15/03/18	FOR MOUNTSHANNON DR. / FOR PERMIT	SMX	23.			
10.	24/06/16	AS PER STRUCTURAL / CITY COMMENTS	SM	22.			
9.	25/05/16	FOR PERMIT	SM	21.			
8.	08/03/16	FOR PERMIT	SM	20.			
7.	27/11/15	REVISED FOR BLOCK 3	SM	19.			
6.	23/09/15	ISSUED FOR CONSTRUCTION	SM	18.			
5.	18/12/14	BLOCKS 2 & 3 - FOR PERMIT	SM	17.			
4.	15/10/14	GENERAL REV. AS PER BLOCK 1	SM	16.			
3.	27/01/14	REVISED FRONT PORCH - ADDED BRICK	SM	15.			
2.	06/06/13	FOR STRUCTURAL REVIEW	SM	14.			
1.	20/05/13	FOR REVIEW	SM	13.	29/03/21	FOR SITE PLAN - BLOCK 29 KANATA WEST	SM
				12.	15/08/18	REVISED FOUNDATION ELEVATIONS	SM

**A**  
**B**  
**C**

A - DETAIL NUMBER  
 B - SHEET NUMBER (DETAIL REQUIRED)  
 C - SHEET NUMBER (DETAIL LOCATION)

**PROJECT:** TERRACE FLATS  
 KANATA WEST  
 1620 MAPLE GROVE - BLOCK 29  
 OTTAWA, ONT.

**CLIENT:** RICH CRAFT  
 Group Of Companies

**DRAWING TITLE:** ELEVATIONS

**DATE:** MAY, 2013. **SCALE:** 3/16" = 1'-0"

**DRAWN BY:** SBM **CHECKED:** MDB

**SHEET No.:** A-5