

DRAWING NOT TO BE USED FOR CONSTRUCTION

GENERAL NOTES:

1. ALL DIMENSIONS INDICATED ARE IN MILLIMETERS (INCHES) UNLESS OTHERWISE SPECIFIED.
2. JELLYFISH STRUCTURE INLET AND OUTLET PIPE SIZE AND ORIENTATION SHOWN FOR INFORMATIONAL PURPOSES ONLY.
3. UNLESS OTHERWISE NOTED, BYPASS INFRASTRUCTURE, SUCH AS ALL UPSTREAM DIVERSION STRUCTURES, CONNECTING STRUCTURES, OR PIPE CONDUITS CONNECTING TO COMPLETE THE JELLYFISH SYSTEM SHALL BE PROVIDED AND ADDRESSED SEPARATELY.
4. DRAWING FOR INFORMATIONAL PURPOSES ONLY. REFER TO ENGINEER'S SITE/UTILITY PLAN FOR STRUCTURE ORIENTATION.
5. NO PRODUCT SUBSTITUTIONS SHALL BE ACCEPTED UNLESS SUBMITTED 10 DAYS PRIOR TO PROJECTS BID DATE, OR AS DIRECTED BY THE ENGINEER OF RECORD.

JELLYFISH STRUCTURE & DESIGN NOTES:

1. 762 MM Ø (30") MAINTENANCE ACCESS WALL TO BE USED FOR CLEANOUT AND ACCESS BELOW CARTRIDGE DECK.
2. CASTINGS OR DOORS OF THE JELLYFISH MANHOLE STRUCTURE TO EXTEND TO DESIGN FINISH GRADE. DEPTHS IN EXCESS OF 3.65 M (12') MAY REQUIRE THE DESIGN AND INSTALLATION OF INTERMEDIATE SAFETY GRATES OR OTHER STRUCTURAL ELEMENTS.
3. CASTINGS AND GRADE RINGS, OR DOORS AND DOOR RISERS, OR BOTH, SHALL BE GROUTED FOR WATERTIGHTNESS. STRUCTURE SHALL MEET AASHTO HS-20, ASSUMING EARTH COVER OF 0' - 3', AND GROUNDWATER ELEVATION AT, OR BELOW, THE OUTLET PIPE INVERT ELEVATION. ENGINEER OF RECORD TO CONFIRM ACTUAL GROUNDWATER ELEVATION. CASTINGS SHALL MEET AASHTO M306 LOAD RATING AND BE CAST WITH THE IMBRIUM LOGO.
4. ALL STRUCTURAL SECTIONS AND PARTS TO MEET OR EXCEED ASTM C-478, ASTM C-443, AND ASTM D-4097 CORRESPONDING TO AASHTO SPECIFICATIONS, AND ANY OTHER SITE OR LOCAL STANDARDS.
5. CONCRETE RISER SECTIONS FROM BOTTOM TO TOP WILL BE ADDED AS REQUIRED INCLUDING TRANSITION PIECES TO SMALLER DIAMETER RISERS FOR SURFACE ACCESSES WHERE WARRANTED BY SERVICING DEPTH.
6. IF MINIMUM DEPTH FROM TOP OF CARTRIDGE DECK TO BOTTOM OF STRUCTURAL TOP SLAB CANNOT BE ACHIEVED DUE TO PIPING INVERT ELEVATIONS OR OTHER SITE CONSTRAINTS. ALTERNATIVE HATCH CONFIGURATIONS MAY BE AVAILABLE. HATCH DOORS SHOULD BE SIZED TO PROVIDE FULL ACCESS ABOVE THE CARTRIDGES TO ACCOMMODATE MAINTENANCE.
7. STEPS TO BE APPROXIMATELY 330 MM (13") APART AND DIMENSIONS MUST MEET LOCAL STANDARDS. STEPS MUST BE INSTALLED AFTER CARTRIDGE DECK IS IN PLACE.
8. CONFIGURATION OF INLET AND OUTLET PIPE CAN VARY TO MEET SITE'S NEEDS.
9. IT IS THE RESPONSIBILITY OF OTHERS TO PROPERLY PROTECT THE TREATMENT DEVICE, AND KEEP THE DEVICE OFFLINE DURING CONSTRUCTION. FILTER CARTRIDGES SHALL NOT BE INSTALLED UNTIL THE PROJECT SITE IS CLEAN AND FREE OF DEBRIS, BY OTHERS. THE PROJECT SITE INCLUDES ANY SURFACE THAT CONTRIBUTES STORM DRAINAGE TO THE TREATMENT DEVICE. CARTRIDGES SHALL BE FURNISHED NEW, AT THE TIME OF FINAL ACCEPTANCE.
10. THIS DRAWING MUST BE VIEWED IN CONJUNCTION WITH THE STANDARD JELLYFISH SPECIFICATION, AND STORMWATER QUALITY FILTER TREATMENT JELLYFISH DOCUMENTS.

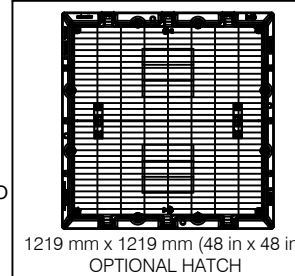
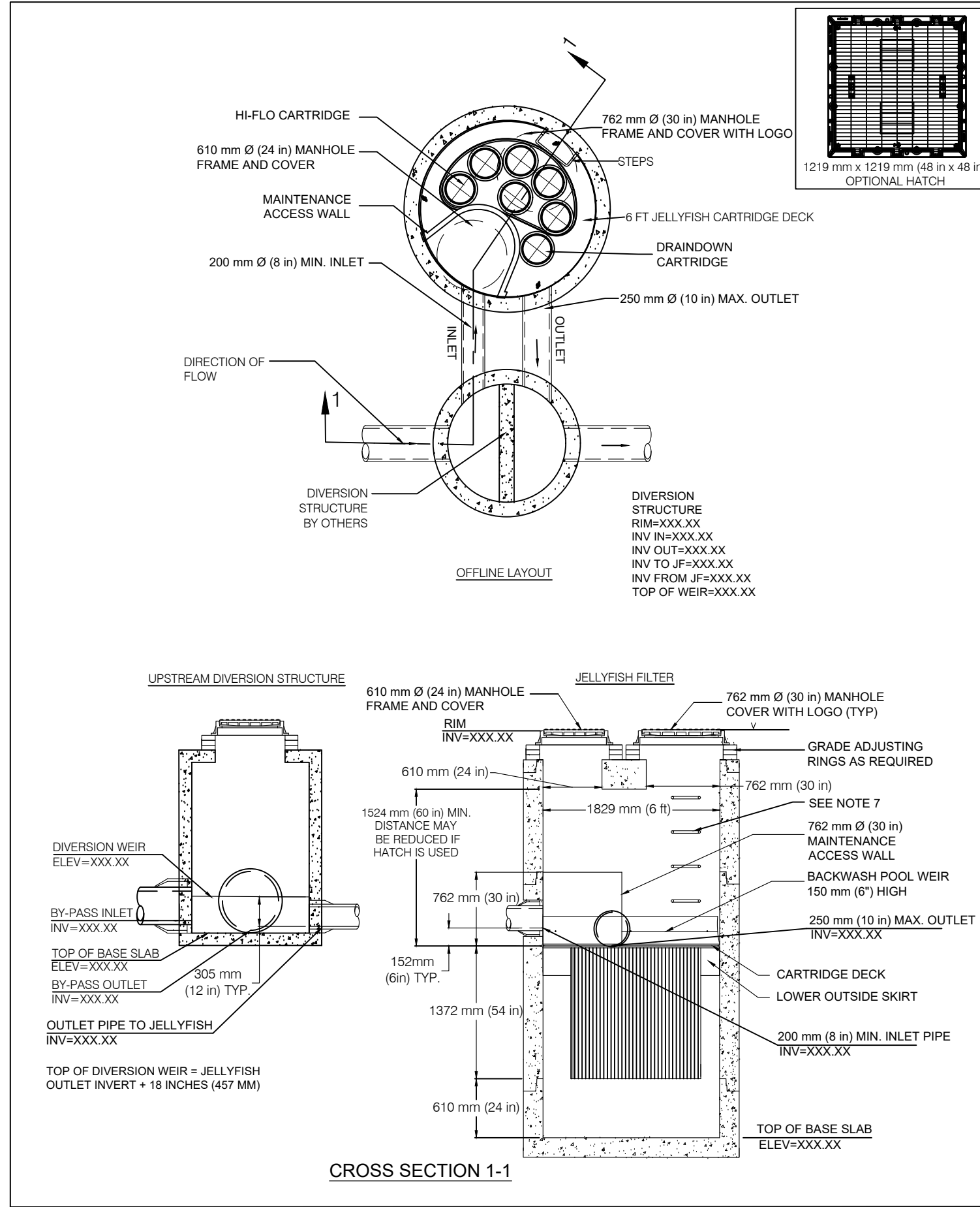
INSTALLATION NOTES

- A. ANY SUB-BASE, BACKFILL DEPTH, AND/OR ANTI-FLOTATION PROVISIONS ARE SITE-SPECIFIC DESIGN CONSIDERATIONS AND SHALL BE SPECIFIED BY ENGINEER OF RECORD.
- B. CONTRACTOR TO PROVIDE EQUIPMENT WITH SUFFICIENT LIFTING AND REACH CAPACITY TO LIFT AND SET THE STRUCTURE (LIFTING CLUTCHES PROVIDED)
- C. CONTRACTOR WILL INSTALL AND LEVEL THE STRUCTURE, SEALING THE JOINTS, LINE ENTRY AND EXIT POINTS (NON-SHRINK GROUT WITH APPROVED WATERSTOP OR FLEXIBLE BOOT)
- D. CONTRACTOR TO TAKE APPROPRIATE MEASURES TO PROTECT CARTRIDGES FROM CONSTRUCTION-RELATED EROSION RUNOFF.
- E. CARTRIDGE INSTALLATION, BY IMBRIUM, SHALL OCCUR ONLY AFTER SITE HAS BEEN STABILIZED AND THE JELLYFISH UNIT IS CLEAN AND FREE OF DEBRIS. CONTACT IMBRIUM TO COORDINATE CARTRIDGE INSTALLATION WITH SITE STABILIZATION.

STANDARD OFFLINE JELLYFISH RECOMMENDED PIPE DIAMETERS			
MODEL DIAMETER (m)	MINIMUM ANGLE INLET/OUTLET PIPES	MINIMUM INLET PIPE DIAMETER (mm)	MINIMUM OUTLET PIPE DIAMETER (mm)
1.2	62	150	200
1.8	59	200	250
2.4	52	250	300
3.0	48	300	450
3.6	40	300	450

CONTACT IMBRIUM SYSTEMS FOR ALTERNATE PIPE DIAMETERS

FOR SITE SPECIFIC DRAWINGS PLEASE CONTACT YOUR LOCAL JELLYFISH FILTER REPRESENTATIVE. SITE SPECIFIC DRAWINGS ARE BASED ON THE BEST AVAILABLE INFORMATION AT THE TIME. SOME FIELD REVISIONS TO THE SYSTEM LOCATION OR CONNECTION PIPING MAY BE NECESSARY BASED ON AVAILABLE SPACE OR SITE CONFIGURATION REVISIONS. ELEVATIONS SHOULD BE MAINTAINED EXCEPT WHERE NOTED ON BYPASS STRUCTURE.



JELLYFISH DESIGN NOTES					
JELLYFISH TREATMENT CAPACITY IS A FUNCTION OF THE CARTRIDGE SELECTION AND THE NUMBER OF CARTRIDGES. THE STANDARD MANHOLE STYLE IS SHOWN. Ø1829 mm (72") MANHOLE JELLYFISH PEAK TREATMENT CAPACITY IS 32.8 L/s (1.16 CFS). TREATMENT FLOW RATE IS BASED ON 457 MM (18") OF HEAD PRESSURE.					
CARTRIDGE SELECTION	54"	40"	27"	15"	
CARTRIDGE DEPTH	90"	76"	63"	51"	
OUTLET INVERT TO STRUCTURE BASE SLAB	5.09 / 2.55	3.68 / 1.84	2.55 / 1.27	1.41 / 0.71	
FLOW RATE HIGH-FLO / DRAINDOWN (L/s) (per cart)	57 / 28	42 / 21	28 / 14	16 / 8	
SEDIMENT CAPACITY HIGH-FLO / DRAINDOWN (kg) (per cart)	370	273	182	104	
MAX. CARTRIDGE HIGH-FLO/DRAINDOWN	32.8	24.6	16.4	9.06	
MAX. SEDIMENT CAPACITY (kg)					
MAX. TREATMENT (L/s)					

SITE SPECIFIC DATA REQUIREMENTS					
JELLYFISH MODEL	*				
STRUCTURE ID	*				
WATER QUALITY FLOW RATE (L/s)	*				
PEAK FLOW RATE (L/s)	*				
RETURN PERIOD OF PEAK FLOW (yrs)	*				
# OF CARTRIDGES REQUIRED (HF / DD)	*				
CARTRIDGE SIZE (inches)	*				
PIPE DATA:	I.E.	MAT'L	DIA	SLOPE %	HGL
INLET #1	*	*	*	*	*
INLET #2	*	*	*	*	*
OUTLET	*	*	*	*	*

* PER ENGINEER OF RECORD

JF6 STANDARD
Scale = 1:50

www.imbrium.com

USA: 888-279-9826 CA: 800-952-4801 INTL: +1-415-960-9900
7037 Ridge Road, Suite 350, Hervey, MD 21076

Imbrium® Filter
JELLYFISH FILTERS ARE MADE OF POLYPROPYLENE AND POLYETHYLENE TEREPHTHALATE. OTHER MATERIALS MAY BE USED IN THE CONSTRUCTION OF THE FILTER.

DATE:	#####
DESIGNED:	BSF
CHECKED:	BSF
APPROVED:	SP
PROJECT #:	#####
PROJECT NAME:	#####
SHEET:	1 OF 2

I:\IMBRIUM\PRODUCTS\JELLYFISH FILTER\40 DRAWINGS & DETAILS\STANDARD DETAILS\JELLYFISH FILTER - OFFLINE\DIVERSION MANHOLE.DWG 9/17/2017 1:49 PM

I:\MBRUM\PRODUCTS\JELLYFISH FILTER\40 DRAWINGS & DETAILS\STANDARD DETAILS\JELLYFISH FILTER.JF6 - OFFLINE DIVERSION MANHOLE.DWG 9/17/2017 1:49 PM

JELLYFISH® FILTER - SPECIFICATIONS

GENERAL

- A. **WORK INCLUDED:** SPECIFIES REQUIREMENTS FOR CONSTRUCTION AND PERFORMANCE OF AN UNDERGROUND STORMWATER QUALITY, MEMBRANE FILTRATION, AND TREATMENT DEVICE THAT REMOVES POLLUTANTS FROM STORMWATER RUNOFF THROUGH THE UNIT OPERATIONS OF SEDIMENTATION, FLOATATION, AND MEMBRANE FILTRATION.
- B. **REFERENCE STANDARDS:**
 - ASTM C 891: SPECIFICATION FOR INSTALLATION OF UNDERGROUND PRECAST CONCRETE UTILITY STRUCTURES
 - ASTM C 478: SPECIFICATION FOR PRECAST REINFORCED CONCRETE MANHOLE SECTIONS
 - ASTM C 990: SPECIFICATION FOR JOINTS FOR CONCRETE MANHOLES USING PREFORMED FLEXIBLE JOINT SEALANTS
 - ASTM D 4101: SPECIFICATION FOR COPOLYMER STEPS CONSTRUCTION
- C. **SHOP DRAWINGS:** SHOP DRAWINGS FOR THE STRUCTURE AND PERFORMANCE ARE TO BE SUBMITTED WITH EACH ORDER TO THE CONTRACTOR. CONTRACTOR SHALL FORWARD SHOP DRAWING SUBMITTAL TO THE CONSULTING ENGINEER FOR APPROVAL. SHOP DRAWINGS ARE TO DETAIL THE STRUCTURE PRECAST CONCRETE AND CALL OUT OR NOTE THE FIBERGLASS (FRP) INTERNALS/COMPONENTS.
- D. **PRODUCT SUBSTITUTIONS:** NO PRODUCT SUBSTITUTIONS SHALL BE ACCEPTED UNLESS SUBMITTED 10 DAYS PRIOR TO PROJECT BID DATE, OR AS DIRECTED BY THE ENGINEER OF RECORD. SUBMISSIONS FOR SUBSTITUTIONS REQUIRE REVIEW AND APPROVAL BY THE ENGINEER OF RECORD, FOR HYDRAULIC PERFORMANCE, IMPACT TO PROJECT DESIGNS, EQUIVALENT TREATMENT PERFORMANCE, AND ANY REQUIRED PROJECT PLAN AND REPORT (HYDROLOGY/HYDRAULIC, WATER QUALITY, STORMWATER POLLUTION) MODIFICATIONS THAT WOULD BE REQUIRED BY THE APPROVING JURISDICTIONS/AGENCIES. CONTRACTOR TO COORDINATE WITH THE ENGINEER OF RECORD ANY APPLICABLE MODIFICATIONS TO THE PROJECT ESTIMATES OF COST, BONDING AMOUNT DETERMINATIONS, PLAN CHECK FEES FOR CHANGES TO APPROVED DOCUMENTS, AND/OR ANY OTHER REGULATORY REQUIREMENTS RESULTING FROM THE PRODUCT SUBSTITUTION.
- E. **HANDLING AND STORAGE:** PREVENT DAMAGE TO MATERIALS DURING STORAGE AND HANDLING.

PRODUCTS

- A. THE DEVICE SHALL BE A CYLINDRICAL OR RECTANGULAR, ALL CONCRETE STRUCTURE (INCLUDING RISERS), CONSTRUCTED FROM PRECAST CONCRETE RISER AND SLAB COMPONENTS OR MONOLITHIC PRECAST STRUCTURE(S), INSTALLED TO CONFORM TO ASTM C 891 AND TO ANY REQUIRED STATE HIGHWAY, MUNICIPAL OR LOCAL SPECIFICATIONS, WHICHEVER IS MORE STRINGENT. THE DEVICE SHALL BE WATERTIGHT.
- B. THE CYLINDRICAL CONCRETE DEVICE SHALL INCLUDE A FIBERGLASS CARTRIDGE DECK INSERT. THE RECTANGULAR CONCRETE DEVICE SHALL INCLUDE A COATED ALUMINUM INSERT. IN EITHER INSTANCE, THE INSERT SHALL BE BOLTED AND SEALED WATERTIGHT INSIDE THE PRECAST CONCRETE CHAMBER. THE INSERT SHALL SERVE AS: (A) A HORIZONTAL DIVIDER BETWEEN THE LOWER TREATMENT ZONE AND THE UPPER TREATED EFFLUENT ZONE; (B) A DECK FOR ATTACHMENT OF FILTER CARTRIDGES SUCH THAT THE MEMBRANE FILTER ELEMENTS OF EACH CARTRIDGE EXTEND INTO THE LOWER TREATMENT ZONE; (C) A PLATFORM FOR MAINTENANCE WORKERS TO SERVICE THE FILTER CARTRIDGES (MAXIMUM MANNED WEIGHT = 450 POUNDS); (D) A CONDUIT FOR CONVEYANCE OF TREATED WATER TO THE EFFLUENT PIPE.
- C. MEMBRANE FILTER CARTRIDGES SHALL BE COMPRISED OF REUSABLE CYLINDRICAL MEMBRANE FILTER ELEMENTS CONNECTED TO A PERFORATED HEAD PLATE. THE NUMBER OF MEMBRANE FILTER ELEMENTS PER CARTRIDGE SHALL BE A MINIMUM OF ELEVEN 2.75-INCH (70-MM) OR GREATER DIAMETER ELEMENTS. THE LENGTH OF EACH FILTER ELEMENT SHALL BE A MINIMUM 15 INCHES (381 MM). EACH CARTRIDGE SHALL BE FITTED INTO THE CARTRIDGE DECK BY INSERTION INTO A CARTRIDGE RECEPTACLE THAT IS PERMANENTLY MOUNTED INTO THE CARTRIDGE DECK. EACH CARTRIDGE SHALL BE SECURED BY A CARTRIDGE LID THAT IS THREADED ONTO THE RECEPTACLE, OR SIMILAR MECHANISM TO SECURE THE CARTRIDGE INTO THE DECK. THE MAXIMUM TREATMENT FLOW RATE OF A FILTER CARTRIDGE SHALL BE CONTROLLED BY AN ORIFICE IN THE CARTRIDGE LID, OR ON THE INDIVIDUAL CARTRIDGE ITSELF, AND BASED ON A DESIGN FLUX RATE (SURFACE LOADING RATE) DETERMINED BY THE MAXIMUM TREATMENT FLOW RATE PER UNIT OF FILTRATION MEMBRANE SURFACE AREA. THE MAXIMUM FLUX RATE SHALL BE 0.21 GPM/FT2 (0.142 LPS/M2). EACH MEMBRANE FILTER CARTRIDGE SHALL ALLOW FOR MANUAL INSTALLATION AND REMOVAL.
- D. ALL FILTER CARTRIDGES AND MEMBRANES SHALL BE REUSABLE AND ALLOW FOR THE USE OF FILTRATION MEMBRANE RINSING PROCEDURES TO RESTORE FLOW CAPACITY AND SEDIMENT CAPACITY, EXTENDING CARTRIDGE SERVICE LIFE.
- E. ACCESS SHALL HAVE A MINIMUM CLEAR HEIGHT OF 60" OVER ALL OF THE FILTER CARTRIDGES, OR BE ACCESSIBLE BY A HATCH OR OTHER MECHANISM THAT PROVIDES MINIMUM 60" VERTICAL CLEAR SPACE OVER ALL OF THE FILTER CARTRIDGES. FILTER CARTRIDGES SHALL BE ABLE TO BE LIFTED STRAIGHT VERTICALLY OUT OF THE RECEPTACLES AND DECK FOR THE ENTIRE LENGTH OF THE CARTRIDGE.
- F. THE DEVICE SHALL INCLUDE A MINIMUM 24 INCHES (610 MM) OF SUMP BELOW THE BOTTOM OF THE CARTRIDGES FOR SEDIMENT ACCUMULATION, UNLESS OTHERWISE SPECIFIED BY THE DESIGN ENGINEER. DEPTHS LESS THAN 24" MAY HAVE AN IMPACT ON THE TOTAL PERFORMANCE AND/OR LONGEVITY BETWEEN CARTRIDGE MAINTENANCE/REPLACEMENT OF THE DEVICE.
- G. ALL PRECAST CONCRETE COMPONENTS SHALL BE MANUFACTURED TO A MINIMUM LIVE LOAD OF HS-20 TRUCK LOADING OR GREATER BASED ON LOCAL REGULATORY SPECIFICATIONS, UNLESS OTHERWISE MODIFIED OR SPECIFIED BY THE DESIGN ENGINEER, AND SHALL BE WATERTIGHT.
- H. GASKETS AND/OR SEALANTS TO PROVIDE WATER TIGHT SEAL BETWEEN CONCRETE JOINTS. JOINTS SHALL BE SEALED WITH PREFORMED JOINT SEALING COMPOUND CONFORMING TO ASTM C 990.
- I. FRAME AND COVERS MUST BE MANUFACTURED FROM CAST-IRON OR OTHER COMPOSITE MATERIAL TESTED TO WITHSTAND H-20 OR GREATER DESIGN LOADS, AND AS APPROVED BY THE LOCAL REGULATORY BODY. FRAMES AND COVERS MUST BE EMBOSSED WITH THE NAME OF THE DEVICE MANUFACTURER OR THE DEVICE BRAND NAME.
- J. DOOR AND HATCHES, IF PROVIDED SHALL MEET DESIGNATED LOADING REQUIREMENTS OR AT A MINIMUM FOR INCIDENTAL VEHICULAR TRAFFIC.
- K. ALL CONCRETE COMPONENTS SHALL BE MANUFACTURED ACCORDING TO LOCAL SPECIFICATIONS AND SHALL MEET THE REQUIREMENTS OF ASTM C 478.
- L. THE FIBERGLASS PORTION OF THE FILTER DEVICE SHALL BE CONSTRUCTED IN ACCORDANCE WITH THE FOLLOWING STANDARD: ASTM D-4097: CONTACT MOLDED GLASS FIBER REINFORCED CHEMICAL RESISTANT TANKS.
- M. STEPS SHALL BE CONSTRUCTED ACCORDING TO ASTM D4101 OF COPOLYMER POLYPROPYLENE, AND BE DRIVEN INTO PREFORMED OR PRE-DRILLED HOLES AFTER THE CONCRETE HAS CURED, INSTALLED TO CONFORM TO APPLICABLE SECTIONS OF STATE, PROVINCIAL AND MUNICIPAL BUILDING CODES, HIGHWAY, MUNICIPAL OR LOCAL SPECIFICATIONS FOR THE CONSTRUCTION OF SUCH DEVICES.
- N. ALL PRECAST CONCRETE SECTIONS SHALL BE INSPECTED TO ENSURE THAT DIMENSIONS, APPEARANCE AND QUALITY OF THE PRODUCT MEET LOCAL MUNICIPAL SPECIFICATIONS AND ASTM C 478.

PERFORMANCE

- A. THE STORMWATER QUALITY FILTER TREATMENT DEVICE SHALL FUNCTION TO REMOVE POLLUTANTS BY THE FOLLOWING UNIT TREATMENT PROCESSES; SEDIMENTATION, FLOATATION, AND MEMBRANE FILTRATION.
- B. THE STORMWATER QUALITY FILTER TREATMENT DEVICE SHALL REMOVE OIL, DEBRIS, TRASH, COARSE AND FINE PARTICULATES, PARTICULATE-BOUND POLLUTANTS, METALS AND NUTRIENTS FROM STORMWATER DURING RUNOFF EVENTS.
- C. THE STORMWATER QUALITY FILTER TREATMENT DEVICE SHALL TYPICALLY UTILIZE AN EXTERNAL BYPASS TO DIVERT EXCESSIVE FLOWS. INTERNAL BYPASS SYSTEMS SHALL BE EQUIPPED WITH A FLOATABLES BAFFLE, AND MUST PASS WATER OVER THE CARTRIDGE DECK, AND AVOID PASSAGE THROUGH THE SUMP AND/OR CARTRIDGE FILTRATION ZONE.
- D. THE STORMWATER QUALITY FILTER TREATMENT DEVICE SHALL TREAT 100% OF THE REQUIRED WATER QUALITY TREATMENT FLOW BASED ON A MAXIMUM TREATMENT FLUX RATE (SURFACE LOADING RATE) ACROSS THE MEMBRANE FILTER CARTRIDGES NOT TO EXCEED 0.21 GPM/FT2 (0.142 LPS/M2).
- E. AT A MINIMUM, THE STORMWATER QUALITY FILTER DEVICE SHALL HAVE BEEN FIELD TESTED AND VERIFIED WITH A MINIMUM 25 QUALIFYING STORM EVENTS AND FIELD MONITORING CONDUCTED ACCORDING TO THE TARP TIER II OR TAPE FIELD TEST PROTOCOL, AND HAVE RECEIVED NJCAT VERIFICATION.
- F. THE STORMWATER QUALITY FILTER TREATMENT DEVICE SHALL HAVE DEMONSTRATED A MINIMUM MEDIAN TSS REMOVAL EFFICIENCY OF 85% AND A MINIMUM MEDIAN SSC REMOVAL EFFICIENCY OF 95%.
- G. THE STORMWATER QUALITY FILTER TREATMENT DEVICE SHALL HAVE DEMONSTRATED THE ABILITY TO CAPTURE FINE PARTICLES AS INDICATED BY A MINIMUM MEDIAN REMOVAL EFFICIENCY OF 75% FOR THE PARTICLE FRACTION LESS THAN 25 MICRONS, AN EFFLUENT D50 OF 15 MICRONS OR LOWER FOR ALL MONITORED STORM EVENTS, AND AN EFFLUENT TURBIDITY OF 15 NTUS OR LOWER.
- H. THE STORMWATER QUALITY FILTER TREATMENT DEVICE SHALL HAVE DEMONSTRATED A MINIMUM MEDIAN TOTAL PHOSPHORUS REMOVAL OF 55%, AND A MINIMUM MEDIAN TOTAL NITROGEN REMOVAL OF 50%.
- I. THE STORMWATER QUALITY FILTER TREATMENT DEVICE SHALL HAVE DEMONSTRATED A MINIMUM MEDIAN TOTAL ZINC REMOVAL OF 50%, AND A MINIMUM MEDIAN TOTAL COPPER REMOVAL OF 75%.

INSPECTION AND MAINTENANCE

- A. DURABILITY OF MEMBRANES ARE SUBJECT TO GOOD HANDLING PRACTICES DURING INSPECTION AND MAINTENANCE (REMOVAL, RINSING, AND REINSERTION) EVENTS, AND SITE SPECIFIC CONDITIONS THAT MAY HAVE HEAVIER OR LIGHTER LOADING ONTO THE CARTRIDGES, AND POLLUTANT VARIABILITY THAT MAY IMPACT THE MEMBRANE STRUCTURAL INTEGRITY. MEMBRANE MAINTENANCE AND REPLACEMENT SHALL BE IN ACCORDANCE WITH MANUFACTURER'S RECOMMENDATIONS.
- B. INSPECTION WHICH INCLUDES TRASH AND FLOATABLES COLLECTION, SEDIMENT DEPTH DETERMINATION, AND VISIBLE DETERMINATION OF BACKWASH POOL DEPTH SHALL BE EASILY CONDUCTED FROM GRADE (OUTSIDE THE STRUCTURE).
- C. MANUAL RINSING OF THE REUSABLE FILTER CARTRIDGES SHALL PROMOTE RESTORATION OF THE FLOW CAPACITY AND SEDIMENT CAPACITY OF THE FILTER CARTRIDGES, EXTENDING CARTRIDGE SERVICE LIFE.
- D. SEDIMENT REMOVAL FROM THE FILTER TREATMENT DEVICE SHALL BE ABLE TO BE CONDUCTED USING A STANDARD MAINTENANCE TRUCK AND VACUUM APPARATUS, AND A MINIMUM ONE POINT OF ENTRY TO THE SUMP THAT IS UNOBSTRUCTED BY FILTER CARTRIDGES.
- E. MAINTENANCE ACCESS SHALL HAVE A MINIMUM CLEAR HEIGHT OF 60" OVER ALL OF THE FILTER CARTRIDGES, OR BE ACCESSIBLE BY A HATCH OR OTHER MECHANISM THAT PROVIDES MINIMUM 60" VERTICAL CLEAR SPACE OVER ALL OF THE FILTER CARTRIDGES. FILTER CARTRIDGES SHALL BE ABLE TO BE LIFTED STRAIGHT VERTICALLY OUT OF THE RECEPTACLES AND DECK FOR THE ENTIRE LENGTH OF THE CARTRIDGE.
- F. FILTER CARTRIDGES SHALL BE ABLE TO BE MAINTAINED WITHOUT THE USE OF ADDITIONAL LIFTING EQUIPMENT.

EXECUTION


- A. THE INSTALLATION OF A WATERTIGHT PRECAST CONCRETE DEVICE SHOULD CONFORM TO ASTM C 891 AND TO ANY STATE HIGHWAY, MUNICIPAL OR LOCAL SPECIFICATIONS FOR THE CONSTRUCTION OF MANHOLES, WHICHEVER IS MORE STRINGENT. SELECTED SECTIONS OF A GENERAL SPECIFICATION THAT ARE APPLICABLE ARE SUMMARIZED BELOW.
- B. THE WATERTIGHT PRECAST CONCRETE DEVICE IS INSTALLED IN SECTIONS IN THE FOLLOWING SEQUENCE:
 - AGGREGATE BASE
 - BASE SLAB
 - TREATMENT CHAMBER AND CARTRIDGE DECK RISER SECTION(S)
 - BYPASS SECTION
 - CONNECT INLET AND OUTLET PIPES
 - CONCRETE RISER SECTION(S) AND/OR TRANSITION SLAB (IF REQUIRED)
 - MAINTENANCE RISER SECTION(S) (IF REQUIRED)
 - FRAME AND ACCESS COVER
- C. INLET AND OUTLET PIPES SHOULD BE SECURELY SET INTO THE DEVICE USING APPROVED PIPE SEALS (FLEXIBLE BOOT CONNECTIONS, WHERE APPLICABLE) SO THAT THE STRUCTURE IS WATERTIGHT, AND SUCH THAT ANY PIPE INTRUSION INTO THE DEVICE DOES NOT IMPACT THE DEVICE FUNCTIONALITY.
- D. ADJUSTMENT UNITS (E.G. GRADE RINGS) SHOULD BE INSTALLED TO SET THE FRAME AND COVER AT THE REQUIRED ELEVATION. THE ADJUSTMENT UNITS SHOULD BE LAID IN A FULL BED OF MORTAR WITH SUCCESSIVE UNITS BEING JOINED USING SEALANT RECOMMENDED BY THE MANUFACTURER. FRAMES FOR THE COVER SHOULD BE SET IN A FULL BED OF MORTAR AT THE ELEVATION SPECIFIED.
- E. IN SOME INSTANCES THE MAINTENANCE ACCESS WALL, IF PROVIDED, SHALL REQUIRE AN EXTENSION ATTACHMENT AND SEALING TO THE PRECAST WALL AND CARTRIDGE DECK AT THE JOB SITE, RATHER THAN AT THE PRECAST FACILITY. IN THIS INSTANCE, INSTALLATION OF THESE COMPONENTS SHALL BE PERFORMED ACCORDING TO INSTRUCTIONS PROVIDED BY THE MANUFACTURER.
- F. FILTER CARTRIDGES SHALL BE INSTALLED IN THE CARTRIDGE DECK AFTER THE CONSTRUCTION SITE IS FULLY STABILIZED AND IN ACCORDANCE WITH THE MANUFACTURERS GUIDELINES AND RECOMMENDATIONS. CONTRACTOR TO CONTACT THE MANUFACTURER TO SCHEDULE CARTRIDGE DELIVERY AND REVIEW PROCEDURES/REQUIREMENTS TO BE COMPLETED TO THE DEVICE PRIOR TO INSTALLATION OF THE CARTRIDGES AND ACTIVATION OF THE SYSTEM.
- G. MANUFACTURER SHALL COORDINATE DELIVERY OF FILTER CARTRIDGES AND OTHER INTERNAL COMPONENTS WITH CONTRACTOR. FILTER CARTRIDGES SHALL BE DELIVERED AND INSTALLED COMPLETE AFTER SITE IS STABILIZED AND UNIT IS READY TO ACCEPT CARTRIDGES. UNIT IS READY TO ACCEPT CARTRIDGES AFTER IS HAS BEEN CLEANED OUT AND ANY STANDING WATER, DEBRIS, AND OTHER MATERIALS HAVE BEEN REMOVED. CONTRACTOR SHALL TAKE APPROPRIATE ACTION TO PROTECT THE FILTER CARTRIDGE RECEPTACLES AND FILTER CARTRIDGES FROM DAMAGE DURING CONSTRUCTION, AND IN ACCORDANCE WITH THE MANUFACTURER'S RECOMMENDATIONS AND GUIDANCE. FOR SYSTEMS WITH CARTRIDGES INSTALLED PRIOR TO FULL SITE STABILIZATION AND PRIOR TO SYSTEM ACTIVATION, THE CONTRACTOR CAN PLUG INLET AND OUTLET PIPES TO PREVENT STORMWATER AND OTHER INFLUENT FROM ENTERING THE DEVICE. PLUGS MUST BE REMOVED DURING THE ACTIVATION PROCESS.
- H. THE MANUFACTURER SHALL PROVIDE AN OWNER'S MANUAL UPON REQUEST.
- I. AFTER CONSTRUCTION AND INSTALLATION, AND DURING OPERATION, THE DEVICE SHALL BE INSPECTED AND CLEANED AS NECESSARY BASED ON THE MANUFACTURER'S RECOMMENDED INSPECTION AND MAINTENANCE GUIDELINES AND THE LOCAL REGULATORY AGENCY/BODY.
- J. WHEN REPLACEMENT MEMBRANE FILTER ELEMENTS AND/OR OTHER PARTS ARE REQUIRED, ONLY MEMBRANE FILTER ELEMENTS AND PARTS APPROVED BY THE MANUFACTURER FOR USE WITH THE STORMWATER QUALITY FILTER DEVICE SHALL BE INSTALLED.

END OF SECTION

The design and information shown on this drawing is provided as a service to the project owner, engineer, contractor, and others. It is not to be used, copied, reproduced, or modified in any manner without the prior written consent of Imbrium. Failure to comply with the terms of this agreement may result in Imbrium disclaiming any liability or responsibility for such use. If discrepancies between the supplied information upon which this design was based and the actual conditions are encountered as the work progresses, these discrepancies must be reported to Imbrium immediately for re-evaluation of the design. Imbrium accepts no responsibility for any errors or omissions in the design or inaccurate information supplied by others.

#	#	#	#	#
#	#	#	#	#
#	#	#	#	#
#	#	#	#	#
0	10/01/2014	INITIAL RELEASE	BSF	BY
MARK	DATE	REVISION DESCRIPTION		

JELLYFISH FILTER SPECIFICATIONS



JF6 STANDARD
Scale = 1:50

www.imbriumsystems.com



7037 Ridge Road, Suite 350, Hanover, MD 21076
USA 888-279-9826 CA 800-952-4801 INTL +1-415-960-9900
Jellyfish® Filter
IMBRIUM SYSTEMS, LLC AND ITS AFFILIATES ARE AN EQUAL OPPORTUNITY AND AFFIRMATIVE ACTION EMPLOYER. OTHER AFFIRMATIVE ACTION POLICIES APPLY.

DATE: #####

DESIGNED: BSF	DRAWN: BSF
CHECKED: BSF	APPROVED: SP
PROJECT #: #####	PROJECT NAME: #####

SHEET: 2 OF 2



STANDARD OFFLINE Jellyfish Filter Sizing Report

Project Information

Date	Tuesday, November 24, 2020
Project Name	Hindu Heritage Center
Project Number	
Location	Ottawa

Jellyfish Filter Design Overview

This report provides information for the sizing and specification of the Jellyfish Filter. When designed properly in accordance to the guidelines detailed in the Jellyfish Filter Technical Manual, the Jellyfish Filter will exceed the performance and longevity of conventional horizontal bed and granular media filters.

Please see www.ImbriumSystems.com for more information.

Jellyfish Filter System Recommendation

The Jellyfish Filter model JF6-4-1 is recommended to meet the water quality objective by treating a flow of 22.7 L/s, which meets or exceeds 90% of the average annual rainfall runoff volume based on 36 years of OTTAWA MACDONALD-CARTIER INT'L A rainfall data for this site. This model has a sediment capacity of 256 kg, which meets or exceeds the estimated average annual sediment load.

Jellyfish Model	Number of High-Flo Cartridges	Number of Draindown Cartridges	Manhole Diameter (m)	Treatment Flow Rate (L/s)	Sediment Capacity (kg)
JF6-4-1	4	1	1.8	22.7	256

The Jellyfish Filter System

The patented Jellyfish Filter is an engineered stormwater quality treatment technology featuring unique membrane filtration in a compact stand-alone treatment system that removes a high level and wide variety of stormwater pollutants. Exceptional pollutant removal is achieved at high treatment flow rates with minimal head loss and low maintenance costs. Each lightweight Jellyfish Filter cartridge contains an extraordinarily large amount of membrane surface area, resulting in superior flow capacity and pollutant removal capacity.

Maintenance

Regular scheduled inspections and maintenance is necessary to assure proper functioning of the Jellyfish Filter. The maintenance interval is designed to be a minimum of 12 months, but this will vary depending on site loading conditions and upstream pretreatment measures. Quarterly inspections and inspections after all storms beyond the 5-year event are recommended until enough historical performance data has been logged to comfortably initiate an alternative inspection interval.

Please see www.ImbriumSystems.com for more information.

Thank you for the opportunity to present this information to you and your client.

Performance

Jellyfish efficiently captures a high level of Stormwater pollutants, including:

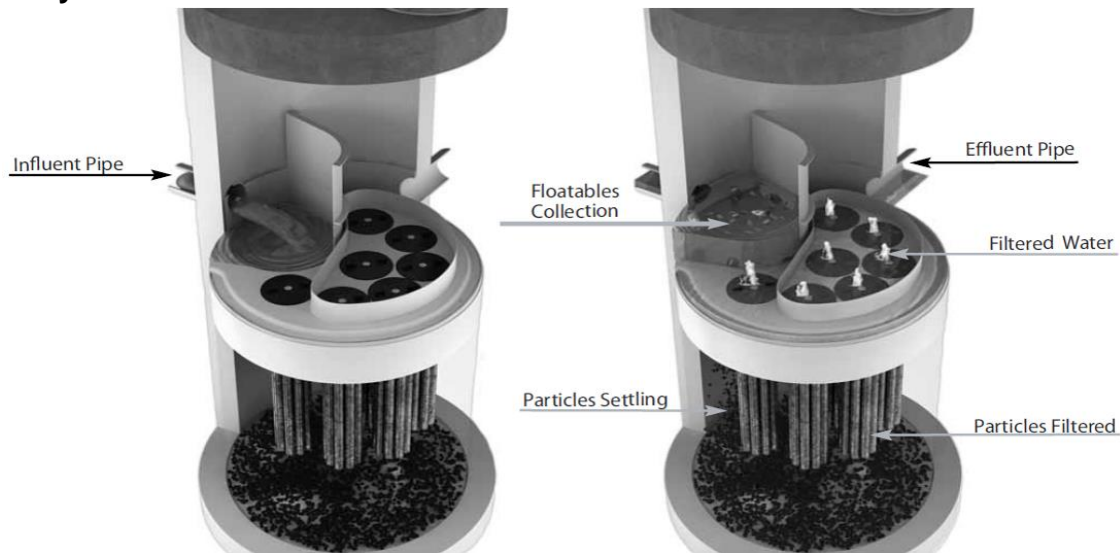
- ☑ 89% of the total suspended solids (TSS) load, including particles less than 5 microns
- ☑ 59% TP removal & 51% TN removal
- ☑ 90% Total Copper, 81% Total Lead, 70% Total Zinc
- ☑ Particulate-bound pollutants such as nutrients, toxic metals, hydrocarbons and bacteria
- ☑ Free oil, Floatable trash and debris

Field Proven Performance

The Jellyfish filter has been field-tested on an urban site with 25 TARP qualifying rain events and field monitored according to the TARP field test protocol, demonstrating:

- A median TSS removal efficiency of 89%, and a median SSC removal of 99%;
- The ability to capture fine particles as indicated by an effluent d50 median of 3 microns for all monitored storm events, and a median effluent turbidity of 5 NTUs;
- A median Total Phosphorus removal of 59%, and a median Total Nitrogen removal of 51%.

Jellyfish Filter Treatment Functions



Pre-treatment and Membrane Filtration

Project Information

Date:	Tuesday, November 24, 2020
Project Name:	Hindu Heritage Center
Project Number:	
Location:	Ottawa

Designer Information

Company:	LRL Associates Ltd.
Contact:	Kyle Herold
Phone #:	

Notes

--

Design System Requirements

Flow Loading	90% of the Average Annual Runoff based on 36 years of OTTAWA MACDONALD-CARTIER INT'L A rainfall	17.5 L/s
Sediment Loading	Treating 90% of the average annual runoff volume, 3541 m ³ , with a suspended sediment concentration of 60 mg/L.	212 kg*

* Indicates that sediment loading is the limiting parameter in the sizing of this Jellyfish system

Recommendation

The Jellyfish Filter model JF6-4-1 is recommended to meet the water quality objective by treating a flow of 22.7 L/s, which meets or exceeds 90% of the average annual rainfall runoff volume based on 36 years of OTTAWA MACDONALD-CARTIER INT'L A rainfall data for this site. This model has a sediment capacity of 256 kg, which meets or exceeds the estimated average annual sediment load.

Jellyfish Model	Number of High-Flow Cartridges	Number of Draindown Cartridges	Manhole Diameter (m)	Wet Vol Below Deck (L)	Sump Storage (m ³)	Oil Capacity (L)	Treatment Flow Rate (L/s)	Sediment Capacity (kg)
JF4-1-1	1	1	1.2	2313	0.34	379	7.6	85
JF4-2-1	2	1	1.2	2313	0.34	379	12.6	142
JF6-3-1	3	1	1.8	5205	0.79	848	17.7	199
JF6-4-1	4	1	1.8	5205	0.79	848	22.7	256
JF6-5-1	5	1	1.8	5205	0.79	848	27.8	313
JF6-6-1	6	1	1.8	5205	0.79	848	28.6	370
JF8-6-2	6	2	2.4	9252	1.42	1469	35.3	398
JF8-7-2	7	2	2.4	9252	1.42	1469	40.4	455
JF8-8-2	8	2	2.4	9252	1.42	1469	45.4	512
JF8-9-2	9	2	2.4	9252	1.42	1469	50.5	569
JF8-10-2	10	2	2.4	9252	1.42	1469	50.5	626
JF10-11-3	11	3	3.0	14456	2.21	2302	63.1	711
JF10-12-3	12	3	3.0	14456	2.21	2302	68.2	768
JF10-12-4	12	4	3.0	14456	2.21	2302	70.7	796
JF10-13-4	13	4	3.0	14456	2.21	2302	75.7	853
JF10-14-4	14	4	3.0	14456	2.21	2302	78.9	910
JF10-15-4	15	4	3.0	14456	2.21	2302	78.9	967
JF10-16-4	16	4	3.0	14456	2.21	2302	78.9	1024
JF10-17-4	17	4	3.0	14456	2.21	2302	78.9	1081
JF10-18-4	18	4	3.0	14456	2.21	2302	78.9	1138
JF10-19-4	19	4	3.0	14456	2.21	2302	78.9	1195
JF12-20-5	20	5	3.6	20820	3.2	2771	113.6	1280
JF12-21-5	21	5	3.6	20820	3.2	2771	113.7	1337
JF12-22-5	22	5	3.6	20820	3.2	2771	113.7	1394
JF12-23-5	23	5	3.6	20820	3.2	2771	113.7	1451
JF12-24-5	24	5	3.6	20820	3.2	2771	113.7	1508
JF12-25-5	25	5	3.6	20820	3.2	2771	113.7	1565
JF12-26-5	26	5	3.6	20820	3.2	2771	113.7	1622
JF12-27-5	27	5	3.6	20820	3.2	2771	113.7	1679

Rainfall

Name:	OTTAWA MACDONALD-CARTIER INT'L A
State:	ON
ID:	6000
Record:	1967 to 2003
Co-ords:	45°19'N, 75°40'W

Drainage Area

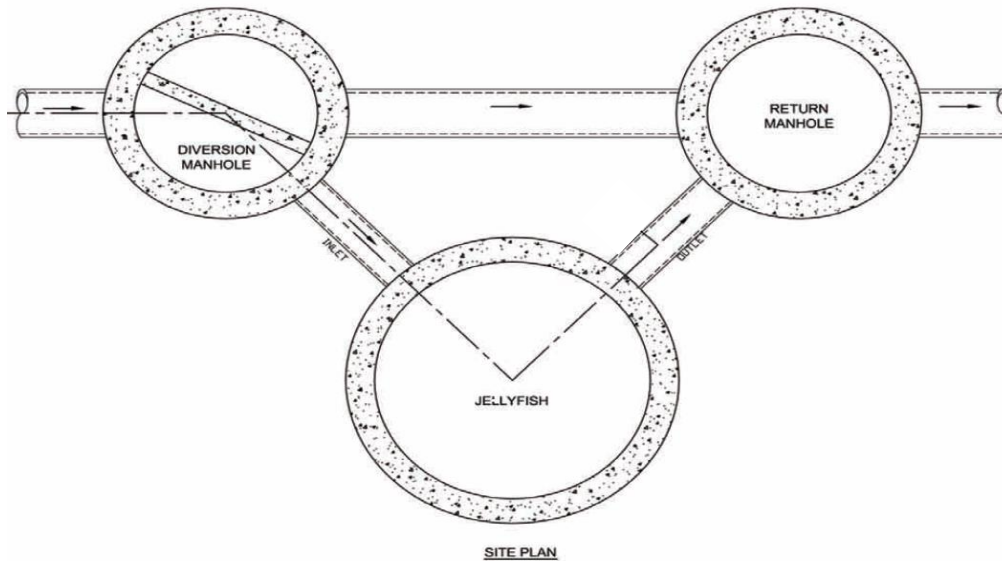
Total Area:	1.316 ha
Runoff Coefficient:	0.59

Upstream Detention

Peak Release Rate:	n/a
Pretreatment Credit:	n/a

Jellyfish Filter Design Notes

- Typically the Jellyfish Filter is designed in an offline configuration, as all stormwater filter systems will perform for a longer duration between required maintenance services when designed and applied in off-line configurations. Depending on the design parameters, an optional internal bypass may be incorporated into the Jellyfish Filter, however note the inspection and maintenance frequency should be expected to increase above that of an off-line system. Speak to your local representative for more information.



Jellyfish Filter Typical Layout

- Typically, 18 inches (457 mm) of driving head is designed into the system, calculated as the difference in elevation between the top of the diversion structure weir and the invert of the Jellyfish Filter outlet pipe. Alternative driving head values can be designed as 12 to 24 inches (305 to 610mm) depending on specific site requirements, requiring additional sizing and design assistance.
- Typically, the Jellyfish Filter is designed with the inlet pipe configured 6 inches (150 mm) above the outlet invert elevation. However, depending on site parameters this can vary to an optional configuration of the inlet pipe entering the unit below the outlet invert elevation.
- The Jellyfish Filter can accommodate multiple inlet pipes within certain restrictions.
- While the optional inlet below deck configuration offers 0 to 360 degree flexibility between the inlet and outlet pipe, typical systems conform to the following:

Model Diameter (m)	Minimum Angle Inlet / Outlet Pipes	Minimum Inlet Pipe Diameter (mm)	Minimum Outlet Pipe Diameter (mm)
1.2	62°	150	200
1.8	59°	200	250
2.4	52°	250	300
3.0	48°	300	450
3.6	40°	300	450

- The Jellyfish Filter can be built at all depths of cover generally associated with conventional stormwater conveyance systems. For sites that require minimal depth of cover for the stormwater infrastructure, the Jellyfish Filter can be applied in a shallow application using a hatch cover. The general minimum depth of cover is 36 inches (915 mm) from top of the underslab to outlet invert.
- If driving head calculations account for water elevation during submerged conditions the Jellyfish Filter will function effectively under submerged conditions.
- Jellyfish Filter systems may incorporate grated inlets depending on system configuration.
- For sites with water quality treatment flow rates or mass loadings that exceed the design flow rate of the largest standard Jellyfish Filter manhole models, systems can be designed that hydraulically connect multiple Jellyfish Filters in series or alternatively Jellyfish Vault units can be designed.

STANDARD SPECIFICATION STORMWATER QUALITY – MEMBRANE FILTRATION TREATMENT DEVICE

PART 1 – GENERAL

1.1 WORK INCLUDED

Specifies requirements for construction and performance of an underground stormwater quality membrane filtration treatment device that removes pollutants from stormwater runoff through the unit operations of sedimentation, floatation, and membrane filtration.

1.2 REFERENCE STANDARDS

ASTM C 891: Specification for Installation of Underground Precast Concrete Utility Structures
ASTM C 478: Specification for Precast Reinforced Concrete Manhole Sections
ASTM C 443: Specification for Joints for Concrete Pipe and Manholes, Using Rubber Gaskets
ASTM D 4101: Specification for Copolymer steps construction

CAN/CSA-A257.4-M92

Joints for Circular Concrete Sewer and Culvert Pipe, Manhole Sections and Fittings Using Rubber Gaskets

CAN/CSA-A257.4-M92

Precast Reinforced Circular Concrete Manhole Sections, Catch Basins and Fittings

Canadian Highway Bridge Design Code

1.3 SHOP DRAWINGS

Shop drawings for the structure and performance are to be submitted with each order to the contractor. Contractor shall forward shop drawing submittal to the consulting engineer for approval. Shop drawings are to detail the structure's precast concrete and call out or note the fiberglass (FRP) internals/components.

1.4 PRODUCT SUBSTITUTIONS

No product substitutions shall be accepted unless submitted 10 days prior to project bid date, or as directed by the engineer of record. Submissions for substitutions require review and approval by the Engineer of Record, for hydraulic performance, impact to project designs, equivalent treatment performance, and any required project plan and report (hydrology/hydraulic, water quality, stormwater pollution) modifications that would be required by the approving jurisdictions/agencies. Contractor to coordinate with the Engineer of Record any applicable modifications to the project estimates of cost, bonding amount determinations, plan check fees for changes to approved documents, and/or any other regulatory requirements resulting from the product substitution.

1.5 HANDLING AND STORAGE

Prevent damage to materials during storage and handling.

PART 2 – PRODUCTS

2.1 GENERAL

- 2.1.1 The device shall be a cylindrical or rectangular, all concrete structure (including risers), constructed from precast concrete riser and slab components or monolithic precast structure(s), installed to conform to ASTM C 891 and to any required state highway, municipal or local specifications; whichever is more stringent. The device shall be watertight.
- 2.1.2 Cartridge Deck The cylindrical concrete device shall include a fiberglass deck. The rectangular concrete device shall include a coated aluminum deck. In either instance, the insert shall be bolted and sealed watertight inside the precast concrete chamber. The deck shall serve as: (a) a horizontal divider between the lower treatment zone and the upper treated effluent zone; (b) a deck for attachment of filter cartridges such that the membrane filter elements of each cartridge extend into the lower treatment zone; (c) a platform for maintenance workers to service the filter cartridges (maximum manned weight = 450 pounds (204 kg)); (d) a conduit for conveyance of treated water to the effluent pipe.
- 2.1.3 Membrane Filter Cartridges Filter cartridges shall be comprised of reusable cylindrical membrane filter elements connected to a perforated head plate. The number of membrane filter elements per cartridge shall be a minimum of eleven 2.75-inch (70-mm) diameter elements. The length of each filter element shall be a minimum 15 inches (381 mm). Each cartridge shall be fitted into the cartridge deck by insertion into a cartridge receptacle that is permanently mounted into the cartridge deck. Each cartridge shall be secured by a cartridge lid that is threaded onto the receptacle, or similar mechanism to secure the cartridge into the deck. The maximum treatment flow rate of a filter cartridge shall be controlled by an orifice in the cartridge lid, or on the individual cartridge itself, and based on a design flux rate (surface loading rate) determined by the maximum treatment flow rate per unit of filtration membrane surface area. The maximum design flux rate shall be 0.21 gpm/ft² (0.142 lps/m²).

Each membrane filter cartridge shall allow for manual installation and removal. Each filter cartridge shall have filtration membrane surface area and dry installation weight as follows (if length of filter cartridge is between those listed below, the surface area and weight shall be proportionate to the next length shorter and next length longer as shown below):

Filter Cartridge Length (in / mm)	Minimum Filtration Membrane Surface Area (ft ² / m ²)	Maximum Filter Cartridge Dry Weight (lbs / kg)
15	106 / 9.8	10.5 / 4.8
27	190 / 17.7	15.0 / 6.8
40	282 / 26.2	20.5 / 9.3
54	381 / 35.4	25.5 / 11.6

- 2.1.4 Backwashing Cartridges The filter device shall have a weir extending above the cartridge deck, or other mechanism, that encloses the high flow rate filter cartridges when placed in their respective cartridge receptacles within the cartridge deck. The weir, or other mechanism, shall collect a pool of filtered water during inflow events that backwashes the high flow rate cartridges when the inflow

event subsides. All filter cartridges and membranes shall be reusable and allow for the use of filtration membrane rinsing procedures to restore flow capacity and sediment capacity; extending cartridge service life.

- 2.1.5 Maintenance Access to Captured Pollutants The filter device shall contain an opening(s) that provides maintenance access for removal of accumulated floatable pollutants and sediment, removal of and replacement of filter cartridges, cleaning of the sump, and rinsing of the deck. Access shall have a minimum clear vertical clear space over all of the filter cartridges. Filter cartridges shall be able to be lifted straight vertically out of the receptacles and deck for the entire length of the cartridge.
- 2.1.6 Bend Structure The device shall be able to be used as a bend structure with minimum angles between inlet and outlet pipes of 90-degrees or less in the stormwater conveyance system.
- 2.1.7 Double-Wall Containment of Hydrocarbons The cylindrical precast concrete device shall provide double-wall containment for hydrocarbon spill capture by a combined means of an inner wall of fiberglass, to a minimum depth of 12 inches (305 mm) below the cartridge deck, and the precast vessel wall.
- 2.1.8 Baffle The filter device shall provide a baffle that extends from the underside of the cartridge deck to a minimum length equal to the length of the membrane filter elements. The baffle shall serve to protect the membrane filter elements from contamination by floatables and coarse sediment. The baffle shall be flexible and continuous in cylindrical configurations, and shall be a straight concrete or aluminum wall in rectangular configurations.
- 2.1.9 Sump The device shall include a minimum 24 inches (610 mm) of sump below the bottom of the cartridges for sediment accumulation, unless otherwise specified by the design engineer. Depths less than 24 inches may have an impact on the total performance and/or longevity between cartridge maintenance/replacement of the device.

2.2 PRECAST CONCRETE SECTIONS

All precast concrete components shall be manufactured to a minimum live load of HS-20 truck loading or greater based on local regulatory specifications, unless otherwise modified or specified by the design engineer, and shall be watertight.

2.3 JOINTS All precast concrete manhole configuration joints shall use nitrile rubber gaskets and shall meet the requirements of ASTM C443, Specification C1619, Class D or engineer approved equal to ensure oil resistance. Mastic sealants or butyl tape are not an acceptable alternative.

2.4 GASKETS Only profile neoprene or nitrile rubber gaskets in accordance to CSA A257.3-M92 will be accepted. Mastic sealants, butyl tape or Conseal CS-101 are not acceptable gasket materials.

2.5 FRAME AND COVER Frame and covers must be manufactured from cast-iron or other composite material tested to withstand H-20 or greater design loads, and as approved by the

local regulatory body. Frames and covers must be embossed with the name of the device manufacturer or the device brand name.

- 2.6 DOORS AND HATCHES If provided shall meet designated loading requirements or at a minimum for incidental vehicular traffic.
- 2.7 CONCRETE All concrete components shall be manufactured according to local specifications and shall meet the requirements of ASTM C 478.
- 2.8 FIBERGLASS The fiberglass portion of the filter device shall be constructed in accordance with the following standard: ASTM D-4097: Contact Molded Glass Fiber Reinforced Chemical Resistant Tanks.
- 2.9 STEPS Steps shall be constructed according to ASTM D4101 of copolymer polypropylene, and be driven into preformed or pre-drilled holes after the concrete has cured, installed to conform to applicable sections of state, provincial and municipal building codes, highway, municipal or local specifications for the construction of such devices.
- 2.10 INSPECTION All precast concrete sections shall be inspected to ensure that dimensions, appearance and quality of the product meet local municipal specifications and ASTM C 478.

PART 3 – PERFORMANCE

3.1 GENERAL

- 3.1.1 Verification – The stormwater quality filter must be verified in accordance with ISO 14034:2016 Environmental management – Environmental technology verification (ETV).
- 3.1.2 Function - The stormwater quality filter treatment device shall function to remove pollutants by the following unit treatment processes; sedimentation, floatation, and membrane filtration.
- 3.1.3 Pollutants - The stormwater quality filter treatment device shall remove oil, debris, trash, coarse and fine particulates, particulate-bound pollutants, metals and nutrients from stormwater during runoff events.
- 3.1.4 Bypass - The stormwater quality filter treatment device shall typically utilize an external bypass to divert excessive flows. Internal bypass systems shall be equipped with a floatables baffle, and must avoid passage through the sump and/or cartridge filtration zone.
- 3.1.5 Treatment Flux Rate (Surface Loading Rate) – The stormwater quality filter treatment device shall treat 100% of the required water quality treatment flow based on a maximum design treatment flux rate (surface loading rate) across the membrane filter cartridges of 0.21 gpm/ft² (0.142 lps/m²).

3.2 FIELD TEST PERFORMANCE

At a minimum, the stormwater quality filter device shall have been field tested and verified with a minimum 25 TARP qualifying storm events and field monitoring shall have been conducted according to the TARP 2009 NJDEP TARP field test protocol, and have received NJCAT verification.

- 3.2.1 Suspended Solids Removal - The stormwater quality filter treatment device shall have demonstrated a minimum median TSS removal efficiency of 85% and a minimum median SSC removal efficiency of 95%.
- 3.2.2 Runoff Volume – The stormwater quality filter treatment device shall be engineered, designed, and sized to treat a minimum of 90 percent of the annual runoff volume determined from use of a minimum 15-year rainfall data set.
- 3.2.3 Fine Particle Removal - The stormwater quality filter treatment device shall have demonstrated the ability to capture fine particles as indicated by a minimum median removal efficiency of 75% for the particle fraction less than 25 microns, an effluent d_{50} of 15 microns or lower for all monitored storm events.
- 3.2.4 Turbidity Reduction - The stormwater quality filter treatment device shall have demonstrated the ability to reduce the turbidity from influent from a range of 5 to 171 NTU to an effluent turbidity of 15 NTU or lower.
- 3.2.5 Nutrient (Total Phosphorus & Total Nitrogen) Removal - The stormwater quality filter treatment device shall have demonstrated a minimum median Total Phosphorus removal of 55%, and a minimum median Total Nitrogen removal of 50%.
- 3.2.6 Metals (Total Zinc & Total Copper) Removal - The stormwater quality filter treatment device shall have demonstrated a minimum median Total Zinc removal of 55%, and a minimum median Total Copper removal of 85%.

3.3 INSPECTION and MAINTENANCE

The stormwater quality filter device shall have the following features:

- 3.3.1 Durability of membranes are subject to good handling practices during inspection and maintenance (removal, rinsing, and reinsertion) events, and site specific conditions that may have heavier or lighter loading onto the cartridges, and pollutant variability that may impact the membrane structural integrity. Membrane maintenance and replacement shall be in accordance with manufacturer's recommendations.
- 3.3.2 Inspection which includes trash and floatables collection, sediment depth determination, and visible determination of backwash pool depth shall be easily conducted from grade (outside the structure).
- 3.3.3 Manual rinsing of the reusable filter cartridges shall promote restoration of the flow capacity and sediment capacity of the filter cartridges, extending cartridge service life.

- 3.3.4 The filter device shall have a minimum 12 inches (305 mm) of sediment storage depth, and a minimum of 12 inches between the top of the sediment storage and bottom of the filter cartridge tentacles, unless otherwise specified by the design engineer. Variances may have an impact on the total performance and/or longevity between cartridge maintenance/replacement of the device.
- 3.3.5 Sediment removal from the filter treatment device shall be able to be conducted using a standard maintenance truck and vacuum apparatus, and a minimum one point of entry to the sump that is unobstructed by filter cartridges.
- 3.3.6 Maintenance access shall have a minimum clear height that provides suitable vertical clear space over all of the filter cartridges. Filter cartridges shall be able to be lifted straight vertically out of the receptacles and deck for the entire length of the cartridge.
- 3.3.7 Filter cartridges shall be able to be maintained without the requirement of additional lifting equipment.

PART 4 – EXECUTION

4.1 INSTALLATION

4.1.1 PRECAST DEVICE CONSTRUCTION SEQUENCE

The installation of a watertight precast concrete device should conform to ASTM C 891 and to any state highway, municipal or local specifications for the construction of manholes, whichever is more stringent. Selected sections of a general specification that are applicable are summarized below.

- 4.1.1.1 The watertight precast concrete device is installed in sections in the following sequence:
 - aggregate base
 - base slab
 - treatment chamber and cartridge deck riser section(s)
 - bypass section
 - connect inlet and outlet pipes
 - concrete riser section(s) and/or transition slab (if required)
 - maintenance riser section(s) (if required)
 - frame and access cover

4.1.2 The precast base should be placed level at the specified grade. The entire base should be in contact with the underlying compacted granular material. Subsequent sections, complete with joint seals, should be installed in accordance with the precast concrete manufacturer's recommendations.

4.1.3 Adjustment of the stormwater quality treatment device can be performed by lifting the upper sections free of the excavated area, re-leveling the base, and re-installing the sections. Damaged sections and gaskets should be repaired or replaced as necessary to restore original condition and watertight seals. Once the stormwater quality treatment device has been constructed, any/all lift holes must be plugged watertight with mortar or non-shrink grout.

4.1.4 Inlet and Outlet Pipes Inlet and outlet pipes should be securely set into the device using approved pipe seals (flexible boot connections, where applicable) so that the structure is watertight, and such that any pipe intrusion into the device does not impact the device functionality.

4.1.5 Frame and Cover Installation Adjustment units (e.g. grade rings) should be installed to set the frame and cover at the required elevation. The adjustment units should be laid in a full bed of mortar with successive units being joined using sealant recommended by the manufacturer. Frames for the cover should be set in a full bed of mortar at the elevation specified.

4.2 MAINTENANCE ACCESS WALL

In some instances the Maintenance Access Wall, if provided, shall require an extension attachment and sealing to the precast wall and cartridge deck at the job site, rather than at the precast facility. In this instance, installation of these components shall be performed according to instructions provided by the manufacturer.

4.3 FILTER CARTRIDGE INSTALLATION Filter cartridges shall be installed in the cartridge deck only after the construction site is fully stabilized and in accordance with the manufacturer's guidelines and recommendations. Contractor to contact the manufacturer to schedule cartridge delivery and review procedures/requirements to be completed to the device prior to installation of the cartridges and activation of the system.

PART 5 – QUALITY ASSURANCE

5.1 FILTER CARTRIDGE INSTALLATION Manufacturer shall coordinate delivery of filter cartridges and other internal components with contractor. Filter cartridges shall be delivered and installed complete after site is stabilized and unit is ready to accept cartridges. Unit is ready to accept cartridges after it has been cleaned out and any standing water, debris, and other materials have been removed. Contractor shall take appropriate action to protect the filter cartridge receptacles and filter cartridges from damage during construction, and in accordance with the manufacturer's recommendations and guidance. For systems with cartridges installed prior to full site stabilization and prior to system activation, the contractor can plug inlet and outlet pipes to prevent stormwater and other influent from entering the device. Plugs must be removed during the activation process.

5.2 INSPECTION AND MAINTENANCE

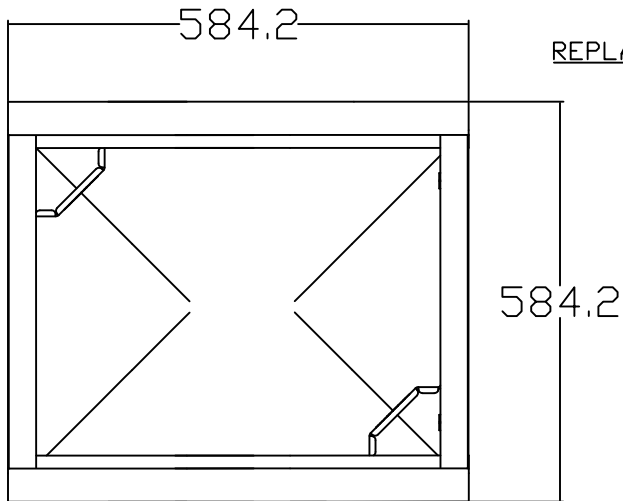
5.2.1 The manufacturer shall provide an Owner's Manual upon request.

5.2.2 After construction and installation, and during operation, the device shall be inspected and cleaned as necessary based on the manufacturer's recommended inspection and maintenance guidelines and the local regulatory agency/body.

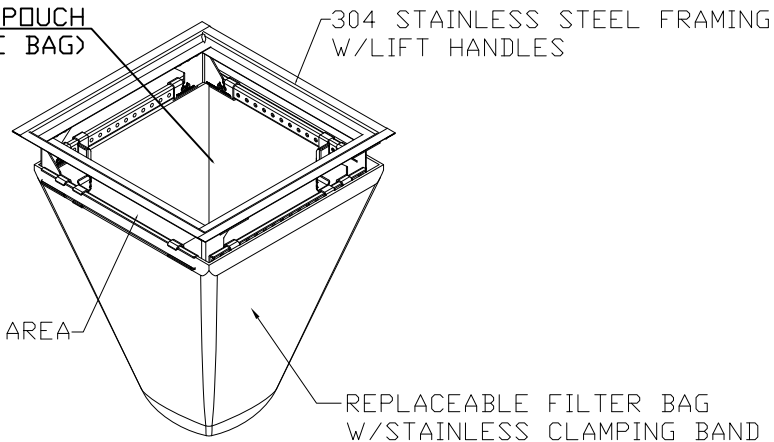
5.3 REPLACEMENT FILTER CARTRIDGES When replacement membrane filter elements and/or other parts are required, only membrane filter elements and parts approved by the manufacturer for use with the stormwater quality filter device shall be installed.

END OF SECTION

FLEXSTORM INLET FILTER: 62MHDFX FOR ODSPD 400. __ Std.



REPLACEABLE ACTIVATED CARBON POUCH
(CLIPPED TO BOTTOM OF THE BAG)

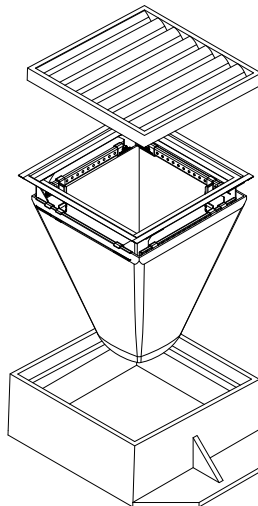


FLEXSTORM PURE INLET FILTERS FOR
RECTANGULAR OPENINGS WITH GRATES

Product selection for FLEXSTORM PURE Filters (Permanent Inlet Protection)

Standard	Inlet Type	Grate Size	Opening Size	Bag Cap (liters ³)	Flow Ratings (liters/second)			FX	FX+	PC	PC+
					FX/FX+	PC/PC+	Bypass				
ODSP 400. __	Square/Rect (SQ) tab supports	604 X 604	508 x 508	67.8	53.8	33.9	124.6	62MHDONTFX	62MHDONTFXP	62MHDONTFX	62MHDONTPCP

*Ratings shown at 50% capacity to accommodate filter bag midway through service life.



	ALL PRODUCTS MANUFACTURED FLEXSTORM A DIVISION OF ADS, INC. WWW.INLETFILTERS.COM (866) 287-8655 PH (630) 355-3477 FX INFO@INLETFILTERS.COM		
	SIZE C	FRAME TYPE Drawn	DWG NO SHEET 1 OF 1

THIS PRINT DISCLOSES SUBJECT MATTER IN WHICH FLEXSTORM HAS PROPRIETARY RIGHTS. THE RECEIPT OR POSSESSION OF THIS PRINT DOES NOT CONFER, TRANSFER, OR LICENSE THE USE OF THE DESIGN OR TECHNICAL INFORMATION SHOWN HEREIN, REPRODUCTION OF THIS PRINT OR ANY INFORMATION CONTAINED HEREIN, OR MANUFACTURE OF ANY ARTICLE HEREFROM, FOR THE DISCLOSURE TO OTHERS IS FORBIDDEN, EXCEPT BY WRITTEN PERMISSION FROM FLEXSTORM. ©2013 ADS, INC.



FLEXSTORM™ Inlet Filter Specifications and Work Instructions

Product: FLEXSTORM Inlet Filters

Manufacturer: Inlet & Pipe Protection, Inc www.inletfilters.com

A subsidiary of Advanced Drainage Systems (ADS) www.ads-pipe.com

1.0 Description of Work:

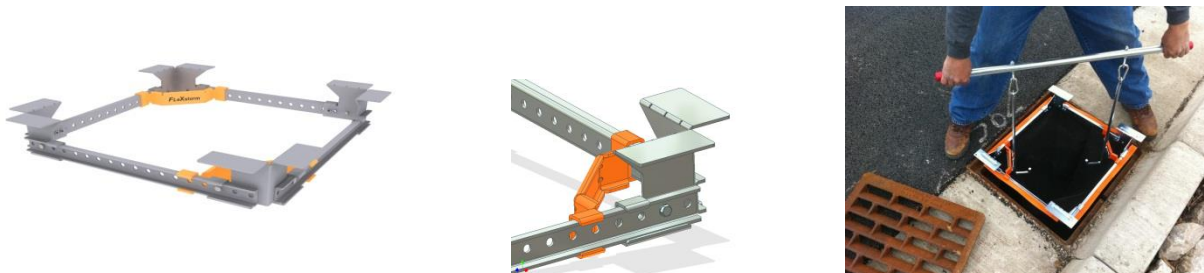
- 1.1 The work covered shall consist of supplying, installing, and maintaining/cleaning of the FLEXSTORM Inlet Filter assembly. The purpose of the FLEXSTORM Inlet Filter system is to collect silt and sediment from surface storm water runoff at drainage locations shown on the plans or as directed by the Engineer. FLEXSTORM PURE, permanent filters, are capable of removing small particles, hydrocarbons, and other contaminants from drainage “hot spots”.

2.0 Material:

- 2.1 The FLEXSTORM Inlet Filter system is comprised of a corrosion resistant steel frame and a replaceable geotextile sediment bag attached to the frame with a stainless steel locking band. The sediment bag hangs suspended from the rigid frame at a distance below the grate that shall allow full water flow into the drainage structure if the bag is completely filled with sediment.



- 2.2 The FLEXSTORM Inlet Filter frame includes lifting handles in addition to the standard overflow feature. A FLEXSTORM Removal Tool engages the lifting bars or handles to allow manual removal of the assembly without machine assistance. The frame suspension system on most rectangular designs is adjustable in 1/2” increments up to 5” per side should the casting or drainage structure have imperfections.

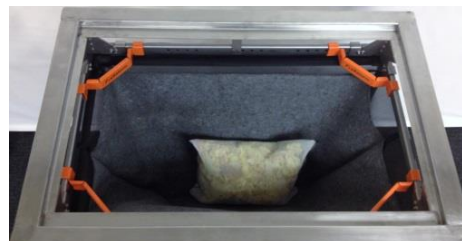




2.3 **FLEXSTORM CATCH-IT** Inlet Filters for temporary inlet protection: The FLEXSTORM CATCH-IT framing is galvanized or zinc plated for corrosion resistance. The “FX” Woven Polypropylene filter bag is the design standard, although the “IL” Nonwoven geotextile is also available if preferred by the engineer. These products are typically used for temporary inlet protection lasting 3 months (short term road work) to 5 years (residential developments).



2.4 **FLEXSTORM PURE** Inlet Filters for permanent inlet protection: The FLEXSTORM PURE framing is comprised of 304 stainless steel with a 25 year life rating. Multiple filter bags are available: **FX, FX+, PC, PC+, LL** and others. The Post Construction “PC+” is the design standard consisting of the “FX” Woven Polypropylene sediment bag lined with Adsorb-it filter fabric, which is made from recycled polyester fibers. The “PC+” includes a replaceable hydrocarbon skimmer pouch strapped to the bottom of the bag for advanced TPH removal.



3.0 Filter Bag Specifications and Capabilities:

3.1 Material Properties (taken from manufacturers average roll value):

FLEXSTORM FILTER BAGS	(22" depth)	(12" depth)	Clean Water Flow Rate (GPM/SqFt)	Min A.O.S. (US Sieve)
	STD Bag P/N	Short Bag P/N		
FX: Standard Woven Bag	FX	FX-S	200	40
FX+: Woven w/ Oil Skimmer	FXP	FXP-S	200	40
FXO: Woven w/ Oil Boom	FXO	FXO-S	200	40
PC: Post Construction Bag	PC	PC-S	137	140
PC+: PC w/ Oil Skimmer	PCP	PCP-S	137	140
LL: Litter and Leaf Bag	LL	LL-S	High	3.5
IL: IDOT Non-Woven Bag	IL	IL-S	145	70



3.2 Standard Bag Sizes and Capabilities: Bag Sizes are determined by clear opening dimensions of the drainage structure. Once frame design size is confirmed, Small - XL bag ratings can be confirmed to meet design criteria. Ratings below are for standard 22” deep bags.

Standard Bag Size ⁶	Solids Storage Capacity (CuFt)	Filtered Flow Rate at 50% Max (CFS)			Oil Retention (Oz)	
		FX	PC	IL	PC*	PCP**
Small	1.6	1.2	0.8	0.9	66	155
Medium	2.1	1.8	1.2	1.3	96	185
Large	3.8	2.2	1.5	1.6	120	209
XL	4.2	3.6	2.4	2.6	192	370

4.0 **Tested Filtration Efficiency and Removal Rates:** Filtration Efficiency, TSS, and TPH testing performed under large scale, real world conditions at accredited third party erosion and sediment control testing laboratory. (See Full Test Reports at www.inletfilters.com)



Inside View of Hopper Agitator



Hopper With Outlet Pipe Leading To Area Inlet



Area Inlet Simulated Showing Influent Discharge From Pipe

4.1 **FLEXSTORM “FX” Filtration Efficiency Test Results:** All testing performed in general accordance with the ASTM D 7351, *Standard Test Method For Determination of Sediment Retention Device Effectiveness in Sheet Flow Application*, with flow diverted into an area inlet. Test Soil used as sediment had the following characteristics with a nominal 7% sediment to water concentration mix. This is representative of a heavy sediment load running off of a construction site.

Soil Characteristics	Test Method	Value	Filtration Efficiency of “FX” FLEXSTORM Bag 82%
% Gravel	ASTM D 422	2	
% Sand		60	
% Silt		24	
% Clay		14	
Liquid Limit, %	ASTM D 4318	34	
Plasticity Index, %		9	
Soil Classification	USDA	Sandy Loam	
Soil Classification	USCS	Silty Sand (SM)	



4.2 FLEXSTORM “PC” and “PC+” Test Results: TSS measured on effluent samples in accordance with SM 2540D and TPH in accordance with EPA 1664A.

Product Tested	110 micron Sediment Load	Ave Flow Rate GPM	% TSS Removal	Soil Retention Efficiency
FLEXSTORM PC Sediment Bag	1750 mg/L using OK-110 Silica Sand and Clean Water	23	99.28%	98.96%
		48	99.32%	99.25%
		70	98.89%	98.80%

Product Tested	Street Sweep Sediment Load	Particle Size of Sediment Load	% TSS Removal	Soil Retention Efficiency
FLEXSTORM PC Sediment Bag	2.5% = 100 lbs Sed / 4000 lbs water	.001 mm – 10.0 mm (median 200 micron)	99.68%	95.61%

Product Tested	Hydrocarbon Load	Ave Flow Rate GPM	% TPH Removal	Oil Retention Efficiency
FLEXSTORM PC+	243 mg/L using 750 mL (1.45 lb) used motor oil + lube oil and clean water	19	99.04%	97.22%
FLEXSTORM PC		20	97.67%	91.61%
FLEXSTORM PC+		92	96.88%	99.11%

5.0 Identification of Drainage Structures to Determine FLEXSTORM Item Codes:

5.1 The Installer (Contractor) shall inspect the plans and/or worksite to determine the quantity of each drainage structure casting type. The foundry casting number or the exact grate size and clear opening size will provide the information necessary to identify the required FLEXSTORM Inlet Filter part number. Inlet Filters are supplied to the field pre-configured to fit the specified drainage structure. Item Codes can be built using the FLEXSTORM Product Configurator at www.inletfilters.com. Detailed Submittal / Specification drawings are linked to each Item Code and available for download by engineers and contractors to include on plans and/or verify field inlet requirements. An example of a typical drawing is shown below.

FLEXSTORM P/Ns 62SHDFX & 62SHDFXP
HD4 INLET TYPE: SQUARE/RECT PRECAST OPENING WITH 4 SEAT GRATE SUPPORT

A: GRATE SIZE (LEFT TO RIGHT)
B: CLEAR OPENING (FRONT TO BACK)
C: GRATE SIZE (LEFT TO RIGHT)
D: CLEAR OPENING (FRONT TO BACK)

Pure Frame with FX Bag		Field Inlet Dimensions		Flexstorm Framing Dims				Flexstorm Ratings (Flow at 50% Max)			Pure Frame with FX Bag	
ADS P/N	Flexstorm Item Code	Grate Size (A x C)	Clear Opening (B x D)	B1	D1	A1	C1	Bag Capacity (ft ³)	PC/PC+ Flow Rate (CFD)	Bypass (CFD)	ADS P/N	Flexstorm Item Code
62SHDFX	FHD4-95-95-90-80-FX	9 1/2 X 9 1/2	8 X 8	6.0	5.0	9.5	9.3	0.2	0.5	1.2	62SHDFXP	FHD4-95-95-90-80-FXP
62SHDFX	FHD4-115-115-105-105-FX	11.5 x 11.5	10.5 x 10.5	8.0	7.5	11.5	11.3	0.4	0.7	1.7	62SHDFXP	FHD4-115-115-105-105-FXP
62SHDFX	FHD4-118-118-105-105-FX	11.75 x 11.75	10.5 x 10.5	8.0	7.5	11.5	11.5	0.4	0.7	1.7	62SHDFXP	FHD4-118-118-105-105-FXP
62SHDFX	FHD4-120-120-105-105-FX	12 X 12	10.5 X 10.5	8.5	7.5	12.0	11.8	0.4	0.7	1.7	62SHDFXP	FHD4-120-120-105-105-FXP
62SHDFX	FHD4-134-134-110-110-FX	13.375 X 13.375	11.509 X 11.509	9.5	8.5	13.0	13.1	0.5	0.9	1.9	62SHDFXP	FHD4-134-134-110-110-FXP
62SHDFX	FHD4-130-130-120-120-FX	13 x 13	12 x 12	9.5	9.0	13.0	12.8	0.5	0.8	2.0	62SHDFXP	FHD4-130-130-120-120-FXP
62SHDFX	FHD4-144-144-133-133-FX	14.375 x 14.375	13.25 x 13.25	10.5	10.5	14.0	14.1	0.7	0.9	2.3	62SHDFXP	FHD4-144-144-133-133-FXP
62SHDFX	FHD4-145-145-133-133-FX	14.5 X 14.5	13.25 X 13.25	11.0	10.5	14.5	14.3	0.7	0.9	2.3	62SHDFXP	FHD4-145-145-133-133-FXP
62SHDFX	FHD4-159-159-143-143-FX	15.87 X 15.87	14.25 X 14.25	12.0	11.5	15.5	15.6	0.9	1.0	2.5	62SHDFXP	FHD4-159-159-143-143-FXP
62SHDFX	FHD4-176-176-160-160-FX	17.75 x 17.75	16 x 16	14.0	13.0	17.5	17.5	1.2	1.1	2.9	62SHDFXP	FHD4-176-176-160-160-FXP

NOTES:
 1. RATINGS SHOWN ARE FOR STANDARD 22" BAG DEPTH; "SHORT" 12" DEPTH BAGS ARE AVAILABLE WITH -S SUFFIX; RATINGS REDUCED BY ~50%.
 2. THE FOLLOWING REQUIRES ADDITIONAL REVIEW
 -GRATES WITH EXTENDED BOTTOMS
 -ANY OBSTRUCTED INLET OPENINGS

FLEXSTORM
INLET FILTERS
PURE

ALL PRODUCTS MANUFACTURED BY INLET & PIPE PROTECTION, INC. A DIVISION OF ADS, INC. WWW.INLETFILTERS.COM (866) 287-9655 PH (630) 355-3477 FX INFO@INLETFILTERS.COM

THIS PRODUCT IS THE PROPERTY OF INLET & PIPE PROTECTION, INC. IT IS TO BE USED ONLY FOR THE PURPOSES INTENDED BY THE MANUFACTURER. IT IS NOT TO BE REPRODUCED, COPIED, OR TRANSMITTED IN ANY FORM OR BY ANY MEANS, ELECTRONIC OR MECHANICAL, INCLUDING PHOTOCOPYING, RECORDING, OR BY ANY INFORMATION STORAGE AND RETRIEVAL SYSTEM. © 2018 INLET & PIPE PROTECTION, INC. ALL RIGHTS RESERVED.

SCALE: **C** HD4 HD4-62SHD-FX

DATE: **FR** TIME: **000000**

SHEET 1 OF 1

6.0 Installation Into Standard Grated Drainage Structures:

- 6.1 Remove the grate from the casting or concrete drainage structure. Clean the ledge (lip) of the casting frame or drainage structure to ensure it is free of stone and dirt. Drop in the FLEXSTORM Inlet Filter through the clear opening and be sure the suspension hangers rest firmly on the inside ledge (lip) of the casting. Replace the grate and confirm it is elevated no more than 1/8", which is the thickness of the steel hangers. For Curb Box Inlet Filters: Insert FLEXSTORM CATCH IT Inlet Filter as described above, pull the rear curb guard flap up and over the open curb box until tight, align magnets to ensure firm attachment to the top portion of the curb box casting. If the curb back opening is not magnetic, slide a typical rock sack or 2 x 4 through the 2-ply rear curb box flap to create a dam which will direct runoff into the sediment bag.





7.0 Maintenance Guidelines: The frequency of maintenance will vary depending on the application (during construction, post construction, or industrial use), the area of installation (relative to grade and runoff exposure), and the time of year relative to the geographic location (infrequent rain, year round rain, rain and snow conditions). The FLEXSTORM Operation & Maintenance Plan (as shown in 7.5) or other maintenance log should be kept on file.

- 7.1 Frequency of Inspections: Construction site inspection should occur following each ½” or more rain event. Post Construction inspections should occur three times per year (every four months) in areas with year round rainfall and three times per year (every three months) in areas with rainy seasons before and after snowfall season. Industrial application site inspections (loading ramps, wash racks, maintenance facilities) should occur on a regularly scheduled basis no less than three times per year.
- 7.2 General Maintenance for standard sediment bags: Upon inspection, the FLEXSTORM Inlet Filter should be emptied if the sediment bag is more than half filled with sediment and debris, or as directed by the Engineer. Remove the grate, engage the lifting bars or handles with the FLEXSTORM Removal Tool, and lift the FLEXSTORM Inlet Filter from the drainage structure. Machine assistance is not required. Dispose of the sediment or debris as directed by the Engineer. As an alternative, an industrial vacuum may be used to collect the accumulated sediment if available. Remove any caked on silt from the sediment bag and reverse flush the bag for optimal filtration. Replace the bag if the geotextile is torn or punctured to ½” diameter or greater on the lower half of the bag. If properly maintained, the Woven sediment bag will last a minimum of 4 years in the field.
- 7.3 Inspection and Handling of the FLEXSTORM PC / PC+ post construction sediment bag: The PC+ sediment bags will collect oil until saturated. Both the Adsorb-it filter liner and the skimmer pouch will retain oil. The volume of oils retained will depend on sediment bag size. Unlike other passive oil sorbent products, Adsorb-it filter fabric has the ability to remove hydrocarbons at high flow rates while retaining 10- 20 times its weight in oil (weight of fabric is 12.8 oz / sq yd). The average 2’ x 2’ PC Bag contains approx .8 sq yds, or 10 oz of fabric. At 50% saturation, the average Adsorb-it lined PC filter will retain approximately 75 oz (4.2 lbs) of oil. Once the bag has become saturated with oils, it can be centrifuged or passed through a wringer to recover the oils, and the fabric reused with 85% to 90% efficacy. If it is determined, per Maintenance Contracts or Engineering Instructions, that the saturated PC sediment bags will be completely replaced, it is the responsibility of the service technician to place the filter medium and associated debris in an approved container and dispose of in accordance with EPA regulations. Spent Adsorb-it can be recycled for its fuel value through waste to energy incineration with a higher BTU per pound value than coal. The oil skimmers start white in color and will gradually turn brown/black as they become saturated, indicating time for replacement. The average skimmer pouch will absorb approximately 62 oz (4 lbs) of oil before requiring replacement. To remove the pouch simply unclip it from the swivel strap sewn to the bottom of the bag. Dispose of all oil contaminated products in accordance to EPA guidelines. The ClearTec Rubberizer media used in the pouch, since a solidifier, will not leach under pressure and can be disposed of in most landfills, recycled for industrial applications, or burned as fuel.



- 7.4 Sediment Bag Replacement: When replacing a Sediment Bag, remove the bag by loosening or cutting off the clamping band. Take the new sediment bag, which is equipped with a stainless steel worm drive clamping band, and use a drill or screw driver to tighten the bag around the frame channel. Ensure the bag is secure and that there is no slack around the perimeter of the band. For Oil absorbent boom bags, simply replace the oil boom or pouch when saturated by sliding it through the mesh support sleeve.





FLEXSTORM® PURE PERMANENT INLET PROTECTION

SPECIFY WITH CONFIDENCE

State DOTs and municipalities across the country now have a universal structural BMP to address the issue of storm sewer inlet protection: FLEXSTORM PURE Inlet Filters.

The FLEXSTORM PURE system is the preferred choice for permanent inlet protection and storm water runoff control. Constructed of versatile stainless steel, FLEXSTORM PURE Inlet Filters will fit any drainage structure and are available with site-specific filter bags providing various levels of filtration. Whether you're the specifier or the user, it's clear to see how FLEXSTORM PURE Inlet Filters outperform the competition.

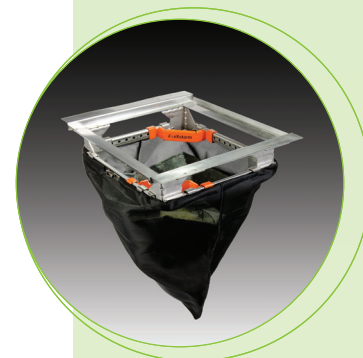
APPLICATIONS:

Car Washes	Gas Stations
Commercial	Parking Lots
Loading Ramps	Dock Drains
Industrial	Maintenance

FEATURES:

- Stainless Steel filter framing is custom configured to fit perfectly into any drainage structure, whether a standard design or obstructed inlet opening
- Filtered Flow Rates and Ultimate Bypass Rates are designed to meet your specific inlet requirements
- Multiple Filter Bags are available targeting site specific removal of trash, litter, leaves, or small particles, oil and grease
- Filters work below grade with an ultimate bypass allowing inlet area to drain with a full bag
- Units install in seconds and are easily maintained with the FLEXSTORM Universal Removal Tool (no heavy machinery required)

ADS Service: ADS representatives are committed to providing you with the answers to all your questions, including selecting the proper filter, specifications, installation and more. Also try the **ADS FLEXSTORM Online Product Configurator** at www.inletfilters.com



FEATURES:

- Receive payback on your investment: durable stainless steel framing provides extended service life while replaceable filter bags handle loads with a safety factor of 5
- Meets stringent removal requirements:
 - FX filter bags are rated for >80% removal efficiency of street sweep-size particles
 - PC/PC+ filter bags have been tested to 99% TSS removal of OK-110 US Silica Sand and 97% TPH (total petroleum hydrocarbon) removal
- Help prevent fines: FLEXSTORM Inlet Filters comply with EPA NPDES initiatives as a temporary or permanent BMP
- If not in stock, orders up to 100 pieces can ship within 48 hours



FLEXSTORM PURE INLET FILTERS SPECIFICATION

IDENTIFICATION

The installer shall inspect the plans and/or worksite to determine the quantity of each drainage structure casting type. The foundry casting number, exact grate size and clear opening size, or other information will be necessary to finalize the FLEXSTORM part number and dimensions. The units are shipped to the field configured precisely to fit the identified drainage structure.

MATERIAL AND PERFORMANCE

The FLEXSTORM Inlet Filter system is comprised of a corrosion resistant steel frame and a replaceable geotextile filter bag attached to the frame with a stainless steel locking band. The filter bag hangs suspended at a distance below the grate that shall allow full water flow into the drainage structure if the bag is completely filled with sediment. The standard Woven Polypropylene FX filter bags are rated for 200 gpm/sqft with a removal efficiency of 82% when filtering a USDA Sandy Loam sediment load. The Post Construction PC filter bags are rated for 137 gpm/sqft and have been 3rd party tested at 99% TSS removal to 110 micron and 97% TPH removal of used motor oil hydrocarbon mix.

INSTALLATION

Remove the grate from the casting or concrete drainage structure. Clean the ledge (lip) of the casting frame or drainage structure to ensure it is free of stone and dirt. Drop in the FLEXSTORM Inlet Filter through the clear opening and be sure the suspension hangers rest firmly on the inside ledge (lip) of the casting. Replace the grate and confirm it is elevated no more than 1/8", which is the thickness of the steel hangers. For wall mount units, follow instructions for attaching the stainless steel mounting brackets using the provided concrete fasteners.

INSPECTION FREQUENCY

Construction site inspection should occur following each 1/2" or more rain event. Post Construction inspections should occur three times per year (every four months) in areas with mild year round rainfall and four times per year (every three months Feb–Nov) in areas with summer rains and before and after the winter snowfall season. Industrial application site inspections (loading ramps, wash racks, maintenance facilities) should occur on a regularly scheduled basis no less than three times per year.

MAINTENANCE GUIDELINES

Empty the filter bag if more than half filled with sediment and debris, or as directed by the engineer. Remove the grate, engage the lifting bars or handles with the FLEXSTORM Removal Tool, and lift from the drainage structure. Dispose of the sediment or debris as directed by the engineer or maintenance contract in accordance with EPA guidelines.

As an alternative, an industrial vacuum may be used to collect the accumulated sediment. Remove any caked-on silt from the sediment bag and reverse flush the bag with medium spray for optimal filtration. Replace the bag if torn or punctured to 1/2" diameter or greater on the lower half of the bag. Post Construction PC/PC+ Bags should be maintained prior to 50% oil saturation. The average 2' x 2' PC filter bag will retain approx. 96 oz (5.4 lbs) of oil at which time it should be serviced or replaced. It can be centrifuged or passed through a wringer to recover the oils, and the fabric reused with 85% to 90% efficacy. It may also be recycled for its fuel value through waste to energy incineration. When utilizing the Cleartec Rubberizer Pouches in the + bags, note that these oil skimmers will gradually turn brown and solidify as they become saturated, indicating time for replacement. Each pouch will absorb approximately 62 oz (4 lbs) of oil before requiring replacement. The spent media may also be recycled for its fuel value through waste to energy incineration. Dispose of all oil contaminated products in accordance with EPA guidelines.

FILTER BAG REPLACEMENT

Remove the bag by loosening or cutting off the clamping band. Take the new filter bag, which is equipped with a stainless steel worm drive clamping band, and use a screw driver to tighten the bag around the frame channel. Ensure the bag is secure and that there is no slack around the perimeter of the band.

For more information on FLEXSTORM Inlet Filters and other ADS products, please contact our Customer Service Representatives at 1-800-821-6710 Try the **ADS FLEXSTORM Online Product Configurator** at www.inletfilters.com.

Lift Handles ease installation and maintenance

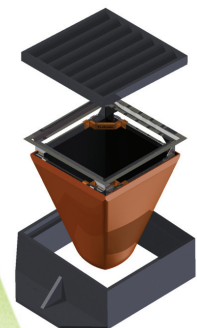


Replaceable Sediment Bag

1/8" thick steel hangers & channels; precision stampings **configured to fit each individual casting**



CAD drawings, work instructions and test reports on website: www.inletfilters.com



ADS "Terms and Conditions of Sale" are available on the ADS website, www.ads-pipe.com

The ADS logo and the Green Stripe are registered trademarks of Advanced Drainage Systems, Inc. FLEXSTORM is a registered trademark of Inlet & Pipe Protection, Inc. © 2019 Advanced Drainage Systems, Inc. BRO 10892 06/19 MH