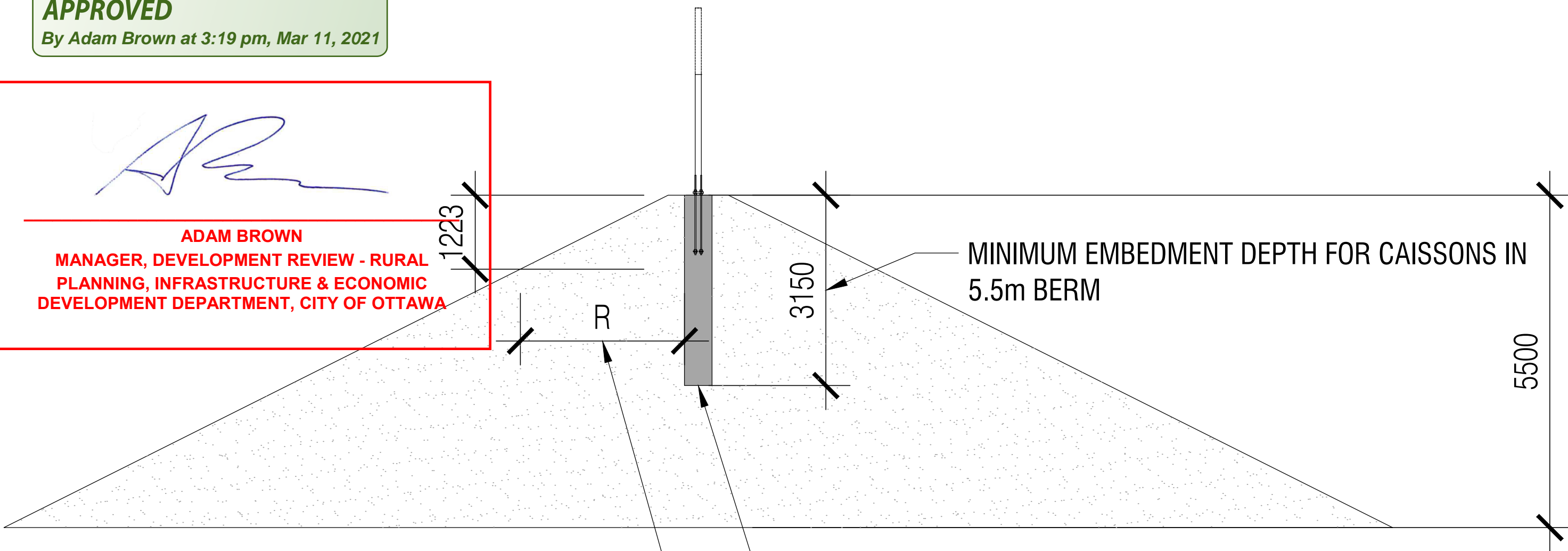


APPROVED
By Adam Brown at 3:19 pm, Mar 11, 2021

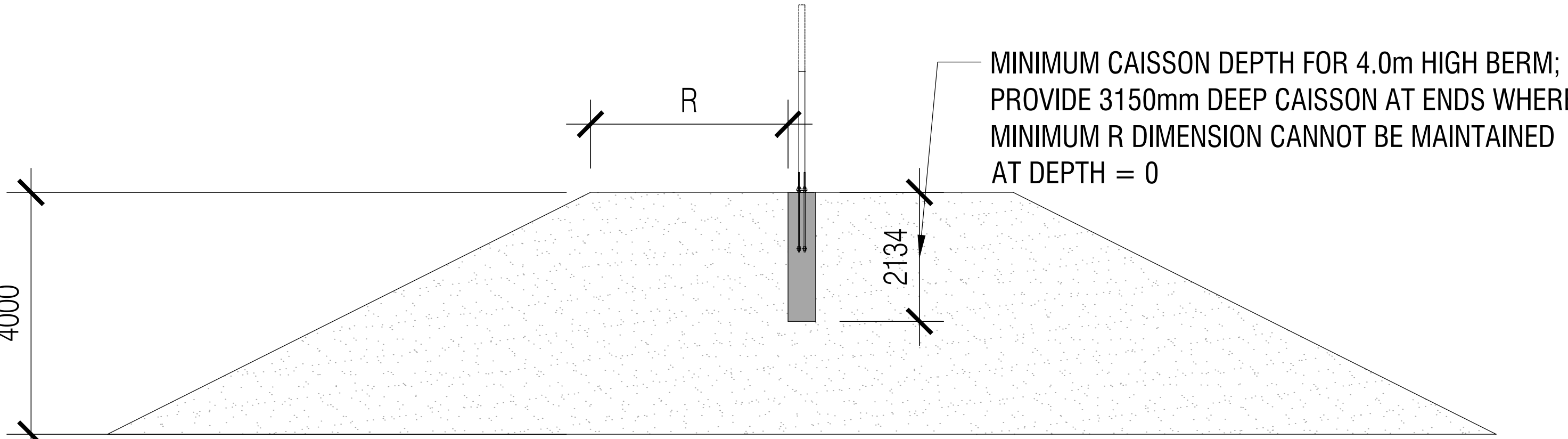
ADAM BROWN
MANAGER, DEVELOPMENT REVIEW - RURAL
PLANNING, INFRASTRUCTURE & ECONOMIC
DEVELOPMENT DEPARTMENT, CITY OF OTTAWA



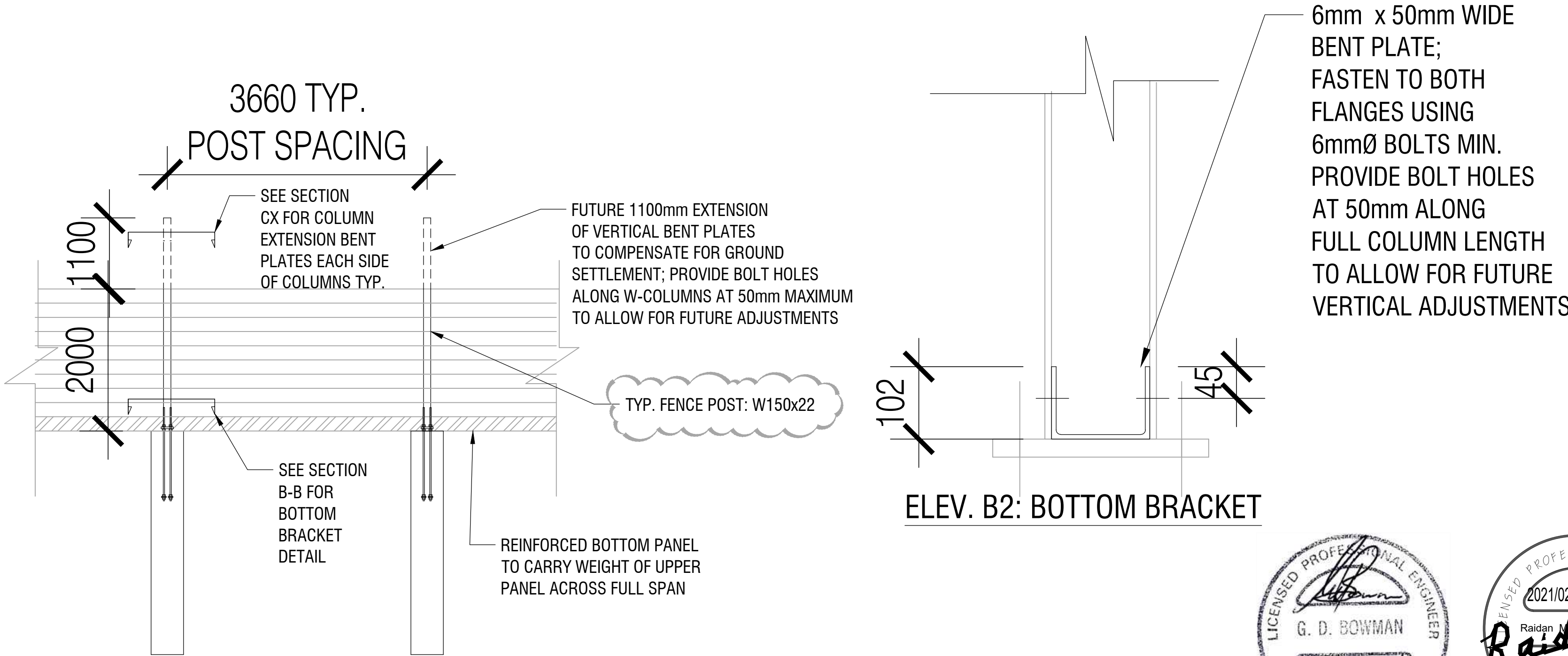
MAINTAIN EDGE DISTANCE R ALL AROUND CAISSONS
R FOR 5.5m HIGH BERM: 2743mm AT 1223mm DEPTH
R FOR 4.0m HIGH BERM: 2743mm AT DEPTH 0

TYPICAL CAISSON:
457mm Ø (18")
SEE SECTION C-C FOR REINFORCEMENT;
FIRST TIE AT 50mm MAX.;
EMBEDMENT DEPTH OF ANCHOR RODS = 960mm MINIMUM;
ANCHOR RODS PROJECTION ABOVE BASE PLATE = 200mm MIN.

SECTION 1: 5.5m BERM FENCE SUPPORTING STRUCTURE

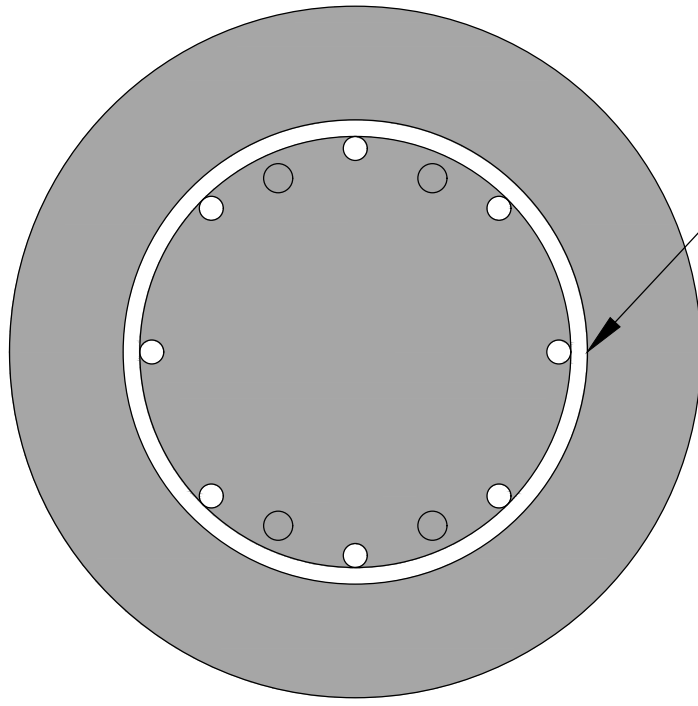


SECTION 2: 4.0m BERM FENCE SUPPORTING STRUCTURE

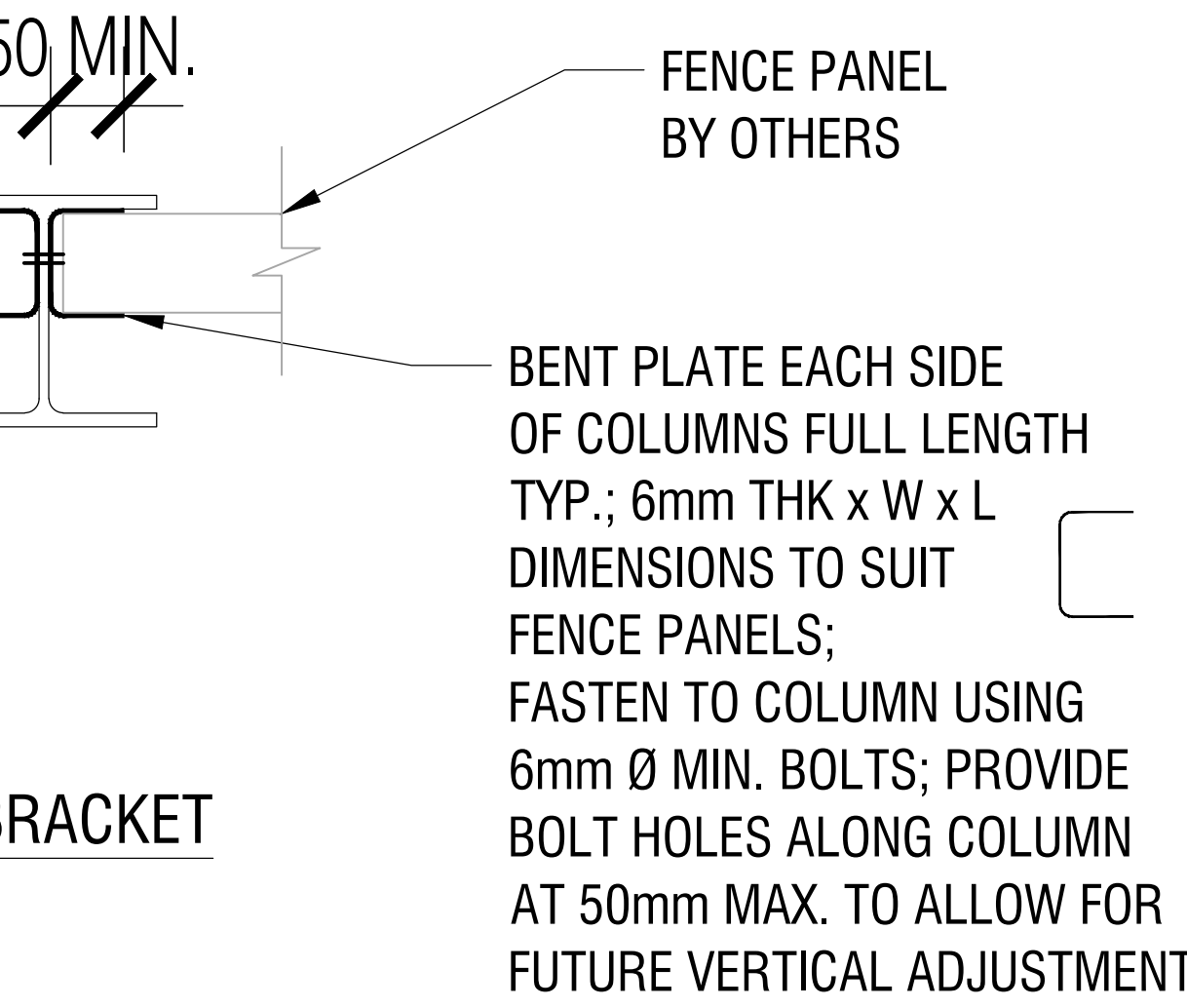


ELEVATION 1: TYP. FENCE SUPPORTING STRUCTURE ELEVATION

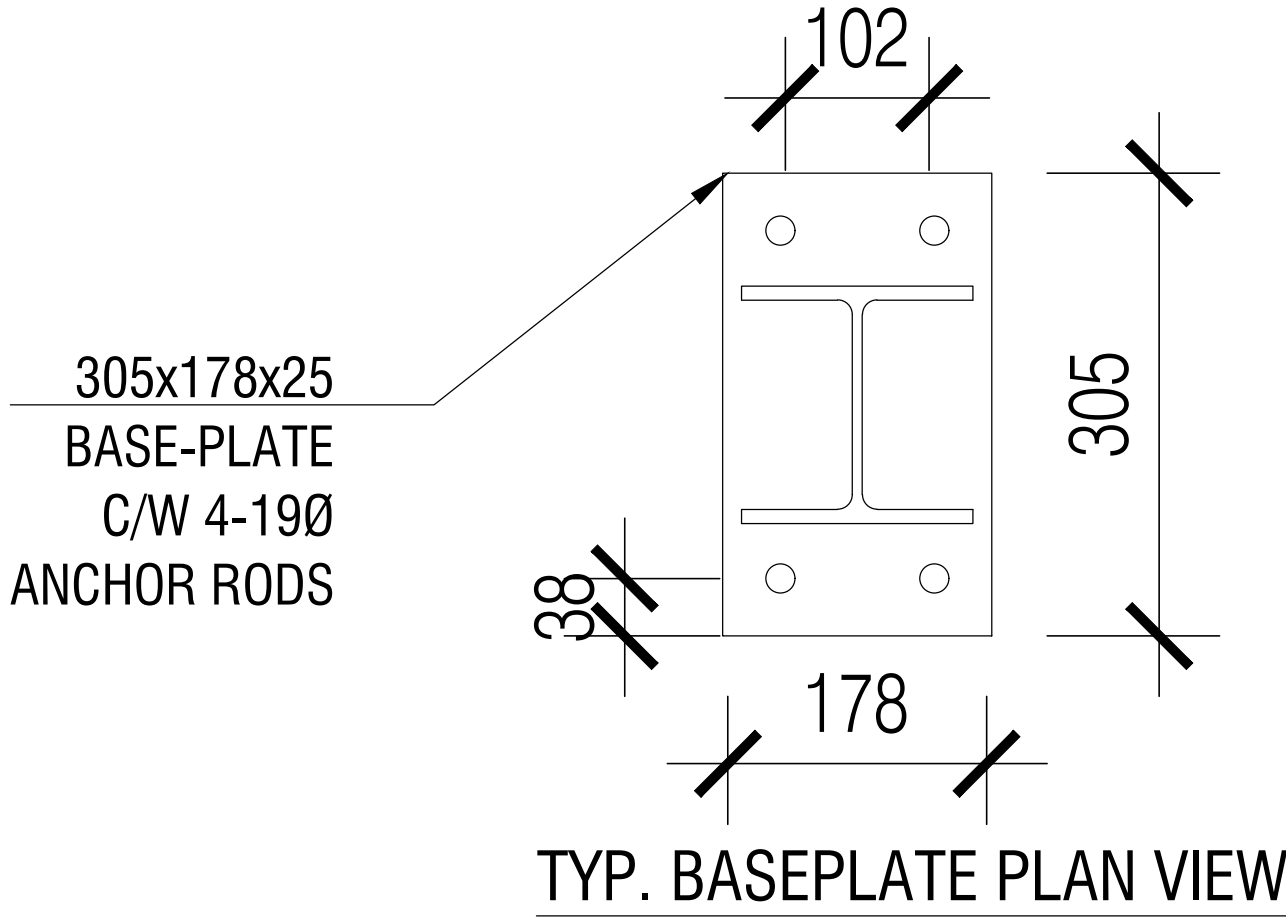
SECTION CX: TOP BRACKET



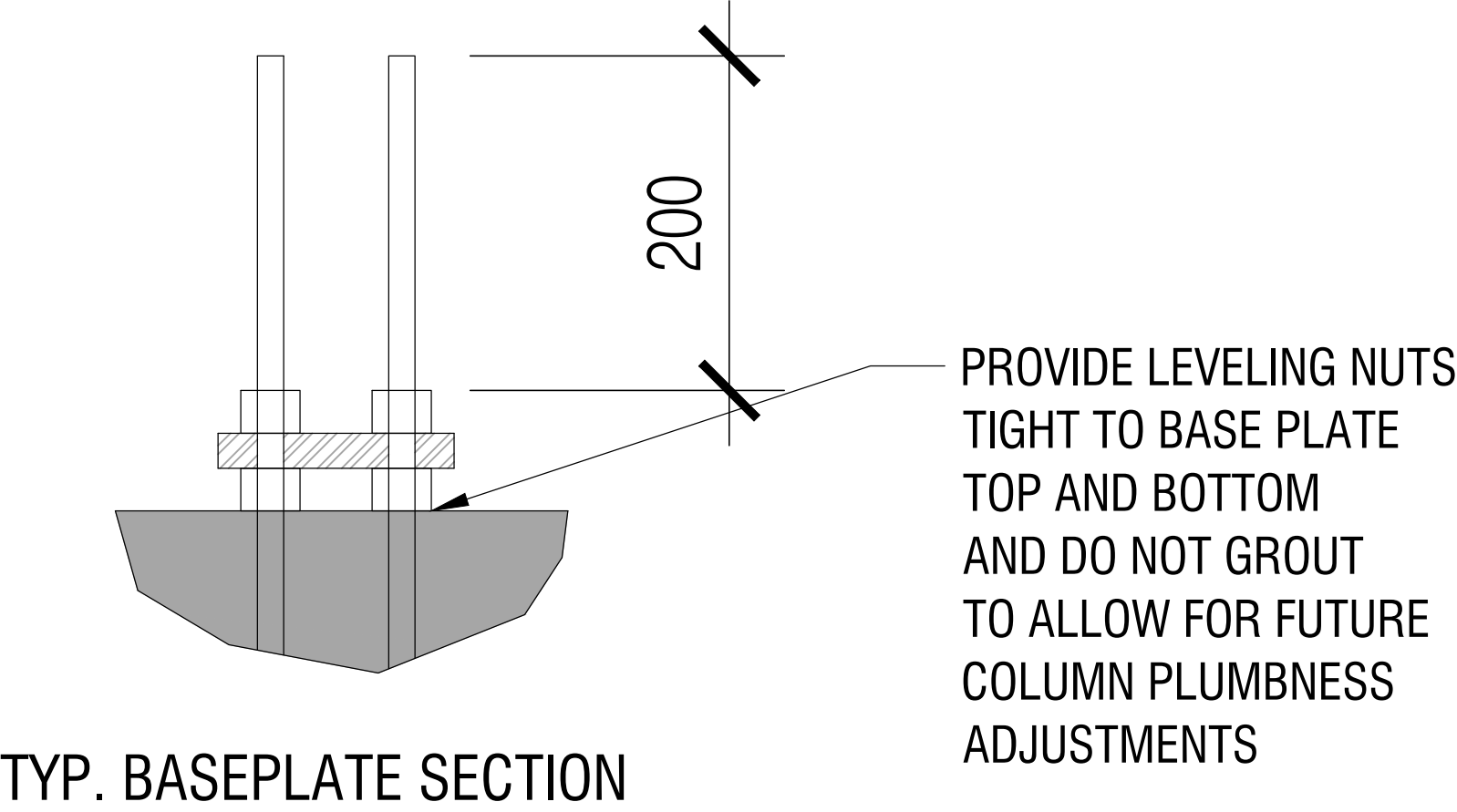
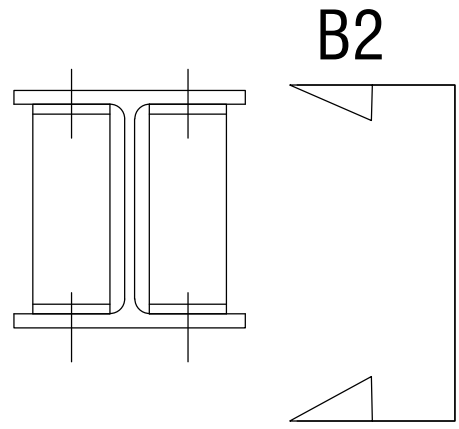
SECTION C-C: TYPICAL CAISSON



457mm (18") CAISSON
C/W 8-15M VERTICALS
+ 10M TIES AT 200mm
FOR THE TOP 1000mm
AND AT 300 TYP.;
FIRST TIE AT 50mm
FROM TOP OF CAISSON



SECTION B-B: BOTTOM BRACKET



SOIL
TO BE COMPACTED IN LIFTS; ALL SOILS SHALL BE IN ACCORDANCE WITH GEOTECHNICAL
ENGINEER'S RECOMMENDATIONS (LETTER 61774.48 DATED FEB 3, 2020).

DESIGN LOAD
DESIGN WIND LOAD IN ACCORDANCE WITH OBC-2012 AMENDED 2020
q = 0.41 kPa (OTTAWA)
Cf = 1.3
Cn = 1.0; Ct = 0.3
Cg = 2.5; lw = 0.8
Ce = 1

STRUCTURAL STEEL
ROLLED SECTIONS SHALL CONFORM TO G40.21-350W (GRADE 50KSI FOR US SECTIONS)
CONNECTION BOLTS SHALL CONFORM TO A325 BEARING TYPE CONNECTION
PLATES SHALL CONFORM TO G40.21-300W
ANCHOR RODS TO ASTM A307

ALL STEEL SHALL BE HOT DIP GALVANIZED TO ASTM A123 OR EQUIVALENT

CONCRETE
CLASS F-2 CONCRETE; W/C RATIO 0.55 MAX.; fc = 25MPa MIN.
TOP COVER = 50mm; SIDE AND BOTTOM COVERS = 75mm

DRAINAGE:
CONCRETE, HORIZONTAL STEEL, AND SOIL SHALL BE SLOPED 0.5% MINIMUM TO
PREVENT ACCUMULATION OF WATER

NOISE WALL SIDING:
BY OTHERS; CAPABLE OF RESISTING DEAD AND WIND LOADS IN ACCORDANCE WITH
OBC-2012 AMEDNED 2020. ENSURE SOUND ATTENUATION PERFORMANCE MEETS OR
EXCEEDS REQUIREMENTS OF ACOUSTICS CONSULTANT REPORT (02000048 BY HGC
ENGINEERING).

EXTENT OF WALL:
SEE SITE PLAN 20003-SP1 BY ROBINSON LAND DEVELOPMENT

MAINTENANCE:
REGULAR MAINTENANCE IS EXPECTED FOR THIS STRUCTURE AND FENCE. INSPECT
STRUCTURE AND FENCE REGULARLY AND ADJUST TO MAINTAIN PERFORMANCE,
PLUMBNESS, AND ALIGNMENT. BACKFILL AND COMPACT SETTLED SOIL AREAS AS
NECESSARY TO MAINTAIN ACOUSTIC PERFORMANCE AND DRAINAGE.

2	ADDED POST SIZE	FEB 04/2021	RMA
1	ISSUED FOR PERMIT REVIEW	FEB 04/2021	RMA

Project 5545 BOUNDARY ROAD	Designed: RMA	Drawn RMA
	Scale: N. T. S.	Date: FEB 02, 2021
Drawing NOISE WALL DETAILS	Project no.	
	Dwg. No. S100	

