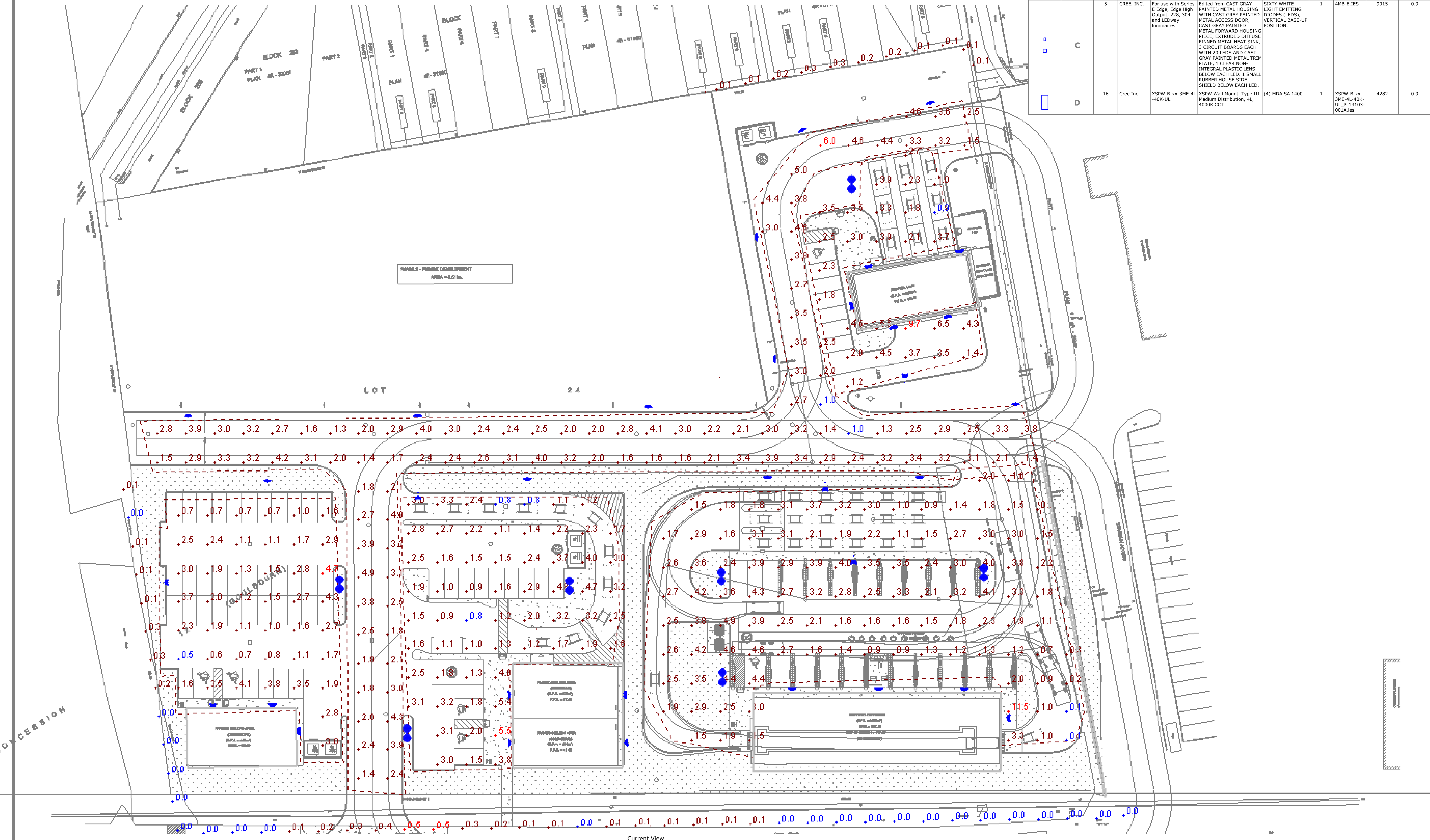
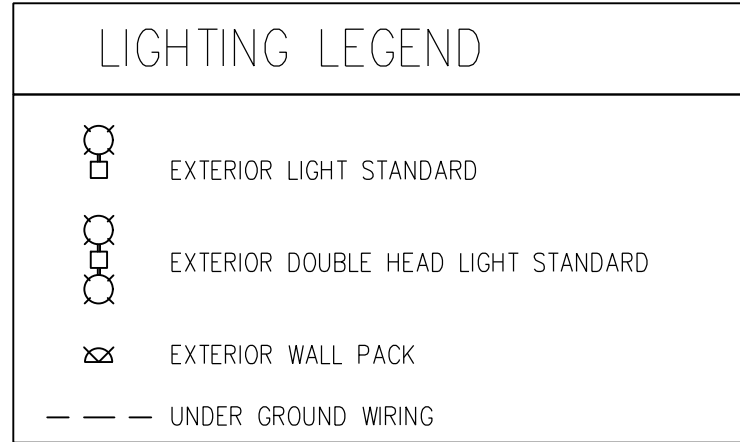
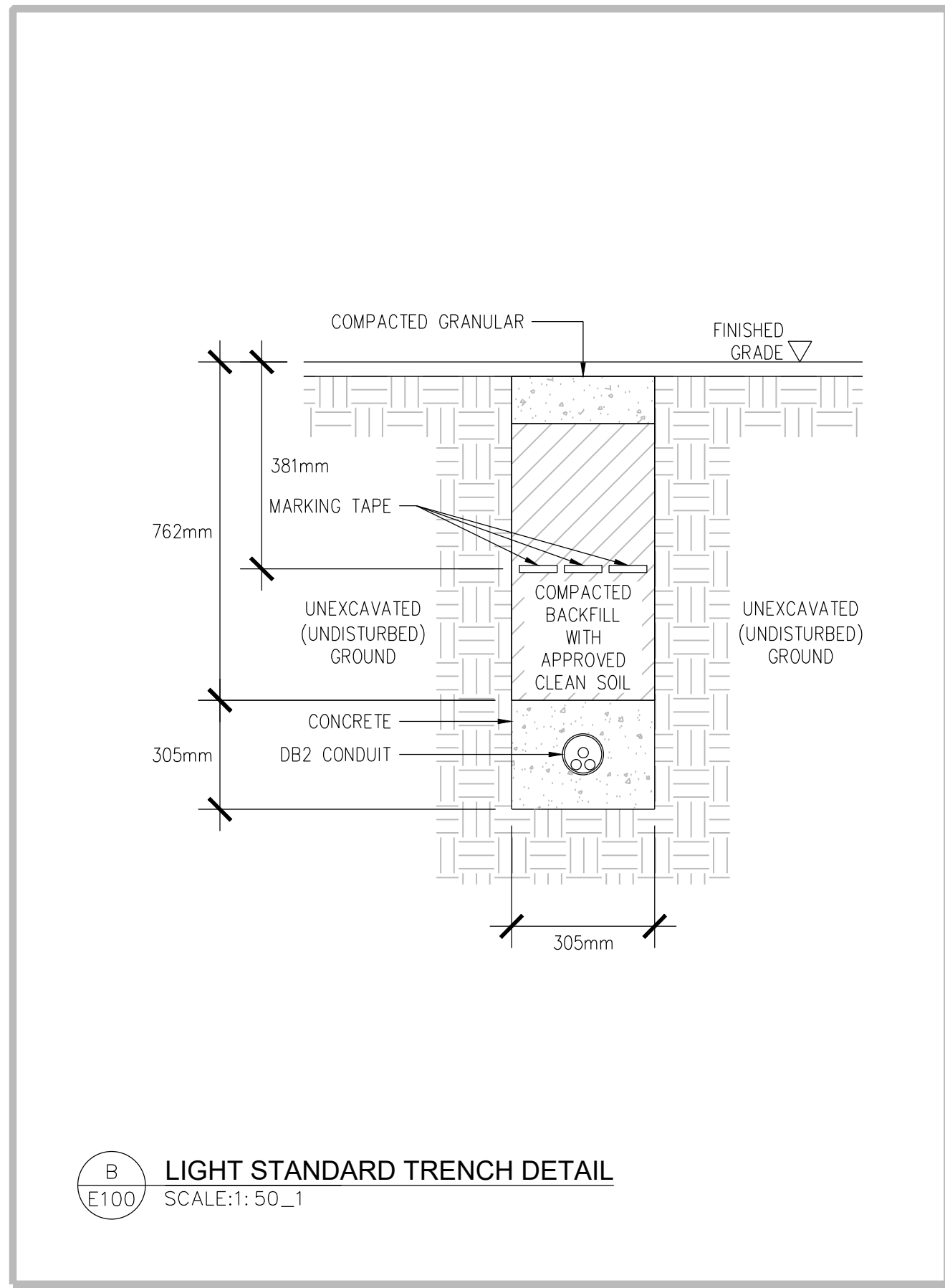


Statistics							
Description	Symbol	Avg	Max	Min	Max/Min	Avg/Min	
CarWash	+	2.5 fc	11.5 fc	0.1 fc	115.0:1	25.0:1	
Mr.Lube	+	3.3 fc	9.7 fc	0.9 fc	10.8:1	3.7:1	
Parking Commercial	+	2.0 fc	4.7 fc	0.5 fc	9.4:1	4.0:1	
Parking Starbuck	+	2.3 fc	5.5 fc	0.8 fc	6.9:1	2.9:1	
Property Line	+	0.1 fc	0.5 fc	0.0 fc	N/A	N/A	
Road Lighting	+	2.8 fc	6.0 fc	1.0 fc	6.0:1	2.8:1	

Schedule											
Symbol	Label	Quantity	Manufacturer	Catalog Number	Description	Lamp	Number Lamps	Filename	Lumens Per Lamp	Light Loss Factor	Wattage
	A	12	CREE, INC.	For use with Series E Edge, Edge High Output, 228, 304 and LEDway luminaires.	Edited from CAST GRAY PAINTED METAL HOUSING WITH CAST GRAY PAINTED METAL ACCESS DOOR, CAST GRAY PAINTED METAL FORWARD HOUSING PIECE, EXTRUDED DIFFUSE FINNED METAL HEAT SINK, 3 CIRCUIT BOARDS EACH WITH 20 LEDS AND CAST GRAY PAINTED METAL TRIM PLATE, 1 CLEAR NON-INTEGRAL PLASTIC LENS BELOW EACH LED, 1 SMALL RUBBER HOUSE SIDE SHIELD BELOW EACH LED.	SIXTY WHITE LIGHT EMITTING DIODES (LEDs), VERTICAL BASE-UP POSITION.	1	2MB-E.IES	8402	0.9	131.9
		7	Cree Inc.	For use with Series E Edge, Edge High Output, 228, 304 and LEDway luminaires.	Edited from 60 LED TYPE V MEDIUM OPTICS 700ma 4000K LEDWAY STREETLIGHTS	SIXTY WHITE LIGHT EMITTING DIODES VERTICAL BASE-UP POSITION	1	5M-E.IES	11633	0.9	266
	B	5	CREE, INC.	For use with Series E Edge, Edge High Output, 228, 304 and LEDway luminaires.	Edited from CAST GRAY PAINTED METAL HOUSING WITH CAST GRAY PAINTED METAL ACCESS DOOR, CAST GRAY PAINTED METAL FORWARD HOUSING PIECE, EXTRUDED DIFFUSE FINNED METAL HEAT SINK, 3 CIRCUIT BOARDS EACH WITH 20 LEDS AND CAST GRAY PAINTED METAL TRIM PLATE, 1 CLEAR NON-INTEGRAL PLASTIC LENS BELOW EACH LED, 1 SMALL RUBBER HOUSE SIDE SHIELD BELOW EACH LED.	SIXTY WHITE LIGHT EMITTING DIODES (LEDs), VERTICAL BASE-UP POSITION.	1	4MB-E.IES	9015	0.9	132.8
		16	Cree Inc	XSPW-B-xx-3ME-4L-40K-UL	XSPW Wall Mount, Type III Medium Distribution, 4L, 4000K CCT	(4) MDA SA 1400	1	XSPW-B-xx-3ME-4L-40K-UL_PL13103-001A.ies	4282	0.9	31.5
	C										
	D										







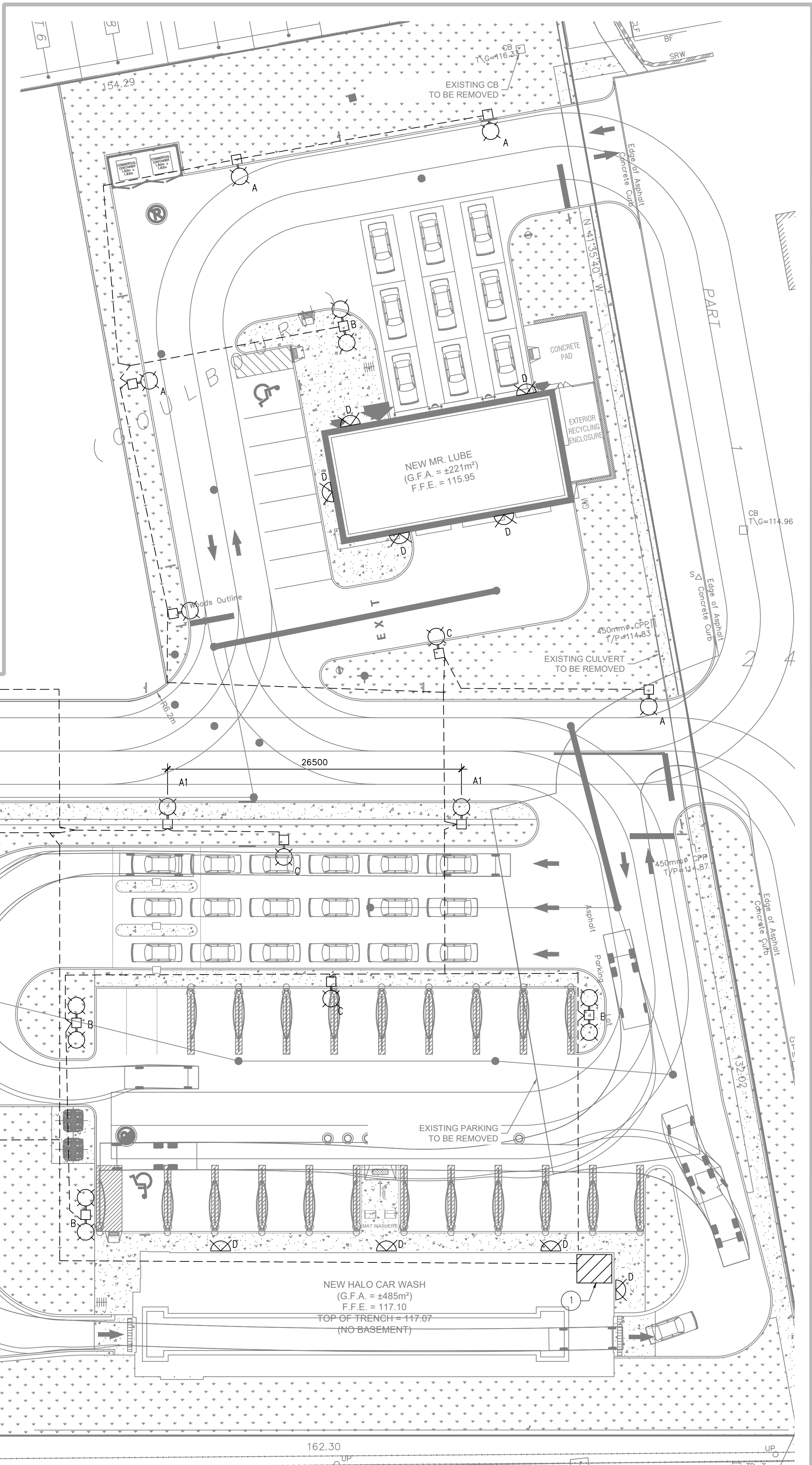
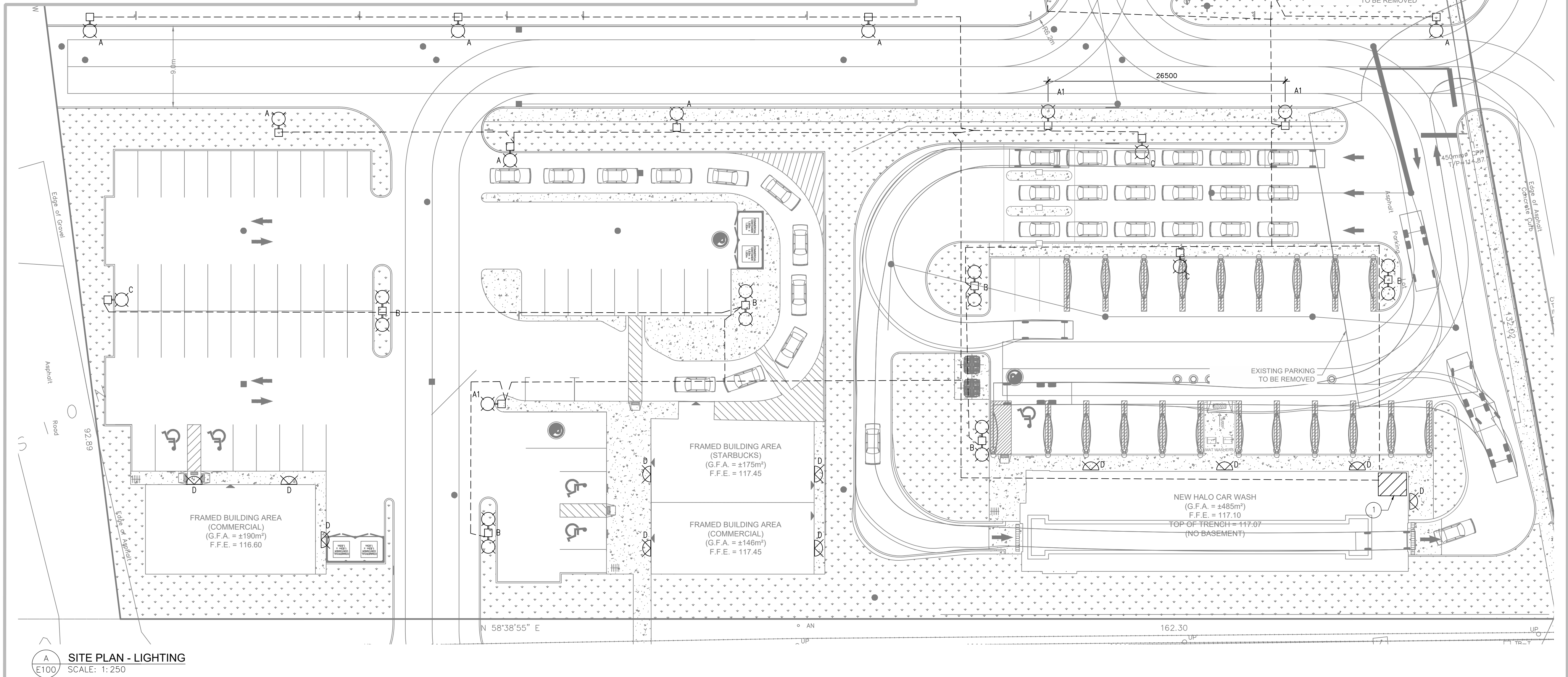
**DRAWING NOTES:**

- CONTRACTOR TO PROVIDE 50AMP DISCONNECT AND A 25KVA TRANSFORMER WITHIN ELECTRICAL ROOM OF HALO CAR WASH BUILDING FOR SITE LIGHTING DISTRIBUTION.

LIGHTING SCHEDULE								
LABEL	QUANTITY	DESCRIPTION	LAMPS	LUMENS PER LAMP	LLF	WATTAGE	VOLTAGE	MOUNTING HEIGHT
A	10	CREE, INC. EDGE LED TYPE II MEDIUM WITH BACK LIGHT SHIELD.	1 x LED	8402	0.9	132	347	6m POLE
A1	4	CREE, INC. EDGE LED TYPE II MEDIUM	1 x LED	8402	0.9	132	347	6m POLE
B	8	CREE, INC. EDGE LED TYPE V MEDIUM.	2 x LED	11633	0.9	266	347	6m POLE
C	7	CREE, INC. EDGE LED TYPE IV MEDIUM WITH BACK LIGHT SHIELD.	1 x LED	9015	0.9	133	347	6m POLE
D	15	CREE, INC. XSPW, LED WALL MOUNT LIGHT	1 x LED	4282	0.9	31.5	120	WALL MOUNTED

**GENERAL NOTES:**

- LIGHT SIMULATION REFERENCE BASED ON LIGHT STANDARDS TO BE INSTALLED ON A 6 METER POLE.
- ROADWAY LIGHTING SPACING INSTALLED 25 METER ON CENTER.
- WALL MOUNTED LIGHTS ARE TO BE INSTALLED AT 8 FT. FROM GROUND LEVEL.
- LIGHT LEVELS REPRESENTATION ARE TO BE CONSIDERED APPROXIMATE. ACTUAL INSTALLED LIGHT LEVELS REPRESENTATION MAY VARY IF ANY DIVINATION OF SITE LIGHTING PLAN LOCATIONS ARE MADE DUE TO UNFORESEEN SITE CONDITIONS.



**USE AND INTERPRETATION OF DRAWINGS**

GENERAL CONDITIONS OF THE CONTRACT FOR CONSTRUCTION ARE PART OF THE CONTRACT DOCUMENTS AND DISCLOSE USE AND INTENT OF THE DRAWING. THE CONTRACT DOCUMENTS INCLUDE NOT ONLY THE DRAWINGS, BUT ALSO THE OWNER-CONTRACTOR AGREEMENTS, CONDITIONS OF THE CONTRACT, THE SPECIFICATIONS, ADDENDA, AND MODIFICATIONS ISSUED AFTER EXECUTION OF THE CONTRACT. THESE CONTRACT DOCUMENTS ARE COMPLEMENTARY, AND WHAT IS REQUIRED BY ANY ONE SHALL BE BINDING AS REQUIRED BY ALL. WORK NOT COMPLETELY DELINEATED HEREON SHALL BE CONSTRUCTED OF THE SAME MATERIALS AND DETAIL SIMILARLY AS WORK SHOWN MORE COMPLETELY ELSEWHERE IN THE CONTRACT DOCUMENTS.

BY USE OF THE DRAWINGS FOR CONSTRUCTION OF THE PROJECT, THE OWNER CONFIRMS THAT HE HAS REVIEWED AND APPROVED THE DRAWINGS. THE CONTRACTOR CONFIRMS THAT HE HAS VISITED THE SITE, FAMILIARIZED HIMSELF WITH THE LOCAL CONDITIONS, VERIFIED FIELD DIMENSIONS AND CORRELATED HIS OBSERVATIONS WITH THE REQUIREMENTS OF THE CONTRACT DOCUMENTS.

AS INSTRUMENTS OF SERVICE, ALL DRAWINGS, SPECIFICATIONS, CAD FILES OR OTHER ELECTRONIC MEDIA AND COPIES THERE OF FURNISHED BY THE ENGINEER ARE HIS PROPERTY. THEY ARE TO BE USED ONLY FOR THIS PROJECT AND ARE NOT TO BE USED ON ANY OTHER PROJECT, INCLUDING REPEATS OF THE PROJECT. CHANGES TO THE DRAWINGS MAY ONLY BE MADE BY THE ENGINEER.

UNLESS THE REVISION TITLE IS "ISSUED FOR CONSTRUCTION", THESE DRAWINGS SHALL BE CONSIDERED PRELIMINARY AND SHALL NOT BE USED AS A CONSTRUCTION DOCUMENT.

THESE DRAWINGS ILLUSTRATES THE WORK TO BE DONE. THE ENGINEER IS NOT RESPONSIBLE FOR THE MEANS, METHODS, TECHNIQUES, SEQUENCES, AND PROCEDURES USED TO DO THE WORK, OR THE SAFETY ASPECTS OF CONSTRUCTION, AND NOTHING ON THESE DRAWINGS EXPRESSED OR IMPLIED CHANGES THIS CONDITION. CONTRACTOR SHALL DETERMINE ALL CONDITIONS AT THE SITE AND SHALL BE RESPONSIBLE FOR KNOWING HOW THEY AFFECT THE WORK. SUBMITTAL OF A BID TO PERFORM THIS WORK IS A KNOWLEDGE OF THE RESPONSIBILITIES, AND THAT THEY HAVE BEEN FULLY CONSIDERED IN PLANNING OF THE WORK, AND THE BID PRICE. NO CLAIMS FOR EXTRA CHARGES DUE TO THESE CONDITIONS WILL BE FORTHCOMING.

**UNAUTHORIZED CHANGES:**

IN THE EVENT THE CLIENT, THE CLIENT'S CONTRACTORS OR SUBCONTRACTORS, OR ANYONE FOR WHOM THE CLIENT IS LEGALLY LIABLE MAKES OR PERMITS TO BE MADE ANY CHANGES TO ANY REPORTS, PLANS, SPECIFICATIONS OR OTHER CONSTRUCTION DOCUMENTS PREPARED BY LRL ASSOCIATES LTD. (LRL) WITHOUT OBTAINING LRL'S PRIOR WRITTEN CONSENT, THE CLIENT SHALL ASSUME FULL RESPONSIBILITY FOR THE RESULTS OF SUCH CHANGES. THEREFORE THE CLIENT AGREES TO WAIVE ANY CLAIM AGAINST LRL AND TO RELEASE LRL FROM ANY LIABILITY ARISING DIRECTLY OR INDIRECTLY FROM SUCH UNAUTHORIZED CHANGES.

IN ADDITION, THE CLIENT AGREES, TO THE FULLEST EXTENT PERMITTED BY LAW, TO INDEMNIFY AND HOLD HARMLESS LRL FROM ANY DAMAGES, LIABILITIES OR COST, INCLUDING REASONABLE ATTORNEY'S FEES AND COST OF DEFENSE, ARISING FROM SUCH CHANGES.

IN ADDITION, THE CLIENT AGREES TO INCLUDE IN ANY CONTRACTS FOR CONSTRUCTION APPROPRIATE LANGUAGE THAT PROHIBITS THE CONTRACTOR OR ANY SUBCONTRACTORS OF ANY TIER FROM MAKING ANY CHANGES OR MODIFICATIONS TO LRL'S CONSTRUCTION DOCUMENTS WITHOUT THE PRIOR WRITTEN APPROVAL OF LRL AND THAT FURTHER REQUIRES THE CONTRACTOR TO INDEMNIFY BOTH LRL AND THE CLIENT FROM ANY LIABILITY OR COST ARISING FROM SUCH CHANGES MADE WITHOUT SUCH PROPER AUTHORIZATION.

**GENERAL NOTES:**

EXISTING SERVICES AND UTILITIES SHOWN ON THESE DRAWINGS ARE TAKEN FROM THE BEST AVAILABLE RECORDS, BUT MAY NOT BE COMPLETE OR TO DATE. CONTRACTOR SHALL VERIFY IN FIELD FOR LOCATION AND ELEVATION OF PIPES AND CHECK WITH THE UTILITY COMPANIES BEFORE DIGGING OR PERFORMING WORK.

CONTRACTOR IS ADVISED TO COLLECT INFORMATION ON SOIL CONDITIONS BEFORE START OF CONSTRUCTION.

THE ENGINEER WAIVES ANY AND ALL RESPONSIBILITY AND LIABILITY FOR PROBLEMS WHICH ARISE FROM FAILURE TO FOLLOW THESE PLANS, SPECIFICATIONS AND THE DESIGN INTENT THEY CONVEY, OR FOR PROBLEMS WHICH ARISE FROM OTHERS' FAILURE TO OBTAIN AND/OR FOLLOW THE ENGINEER'S GUIDANCE WITH RESPECT TO ANY ERRORS, OMISSIONS, INCONSISTENCIES AMBIGUITIES OR CONFLICTS WHICH ARE ALLEGED.

CONTRACTOR TO VERIFY ALL DIMENSIONS AND NOTIFY THE ENGINEER OF ANY DISCREPANCIES BEFORE WORK COMMENCES. DO NOT SCALE DRAWINGS.

**NOT FOR CONSTRUCTION TENDER OR PERMIT**

02	ISSUED FOR SITE PLAN PERMIT	P.H.	JAN. 15, 2021
01	ISSUED FOR REVIEW	P.H.	NOV. 13, 2020
No.	REVISIONS	BY	DATE

**LICENCED PROFESSIONAL ENGINEER**  
2021.01.15  
M. J. J. JESSIER  
190180833  
PROVINCE OF ONTARIO

NOT AUTHENTIC UNLESS SIGNED AND DATED

**LRL**  
ENGINEERING | INGENIERIE  
5430 Canotek Road | Ottawa, ON, K1J 9G2  
www.lrl.ca | (613) 842-3434

**CLIENT**  
HALO CAR WASH

**DESIGNED BY:** P.H. **DRAWN BY:** P.H. **APPROVED BY:** M.T.

**PROJECT**  
6111 HAZELDEAN RD.  
STITTSVILLE, ON

**DRAWING TITLE**  
SITE PLAN

**PROJECT NO.**  
200100

**DATE**  
NOVEMBER, 2020

**E100**