




SITE PLAN NOTES	
1.	ALL REQUIRED SETBACKS TO BE VERIFIED WITH GOVERNING AUTHORITIES PRIOR TO CONSTRUCTION.
2.	THIS DRAWING IS TO BE READ IN CONJUNCTION WITH STANDARD DETAILS AND MILLWORKS BOOKLET, AND ALL ARCHITECTURAL, STRUCTURAL, MECHANICAL, ELECTRICAL, AND EQUIPMENT DRAWINGS.
3.	GENERAL CONTRACTOR IS RESPONSIBLE TO ENSURE THAT ALL CONSTRUCTION CONFORMS TO THE REQUIREMENT OF THE CURRENT APPLICABLE BUILDING CODE AND GOVERNING REGULATIONS.
4.	ALL LIGHTING TO BE DIRECTED INTO SITE AND NOT TO INFRINGE ON ADJACENT PROPERTIES.
5.	CONTRACTOR TO REPAIR ALL DAMAGE RESULTING FROM THE WORK CARRIED OUT UNDER THIS CONTRACT AT NO EXTRA CHARGE.
6.	CONTRACTOR TO REMOVE ALL DEBRIS AND SURPLUS MATERIALS FROM THE SITE AT COMPLETION OF CONSTRUCTION.



PROJECT FOR:

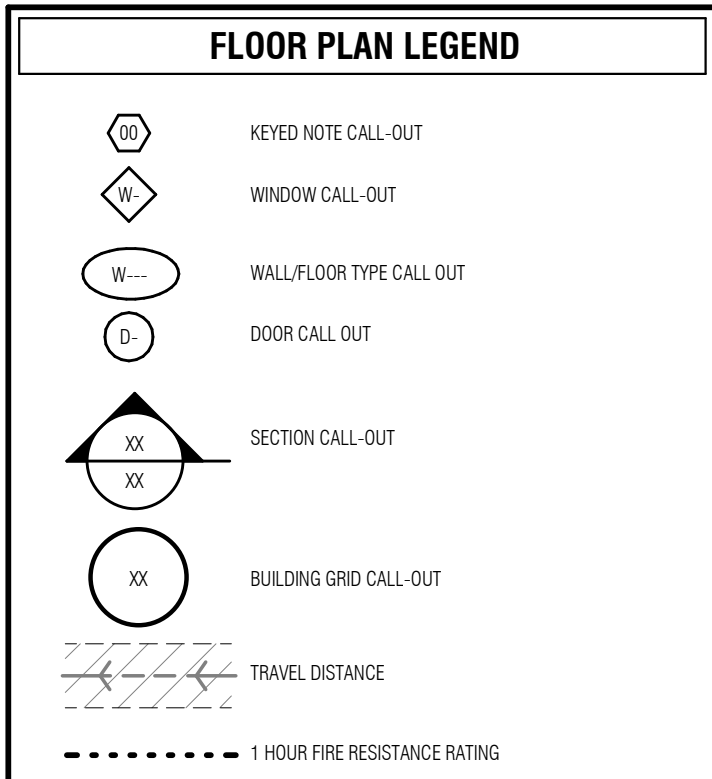
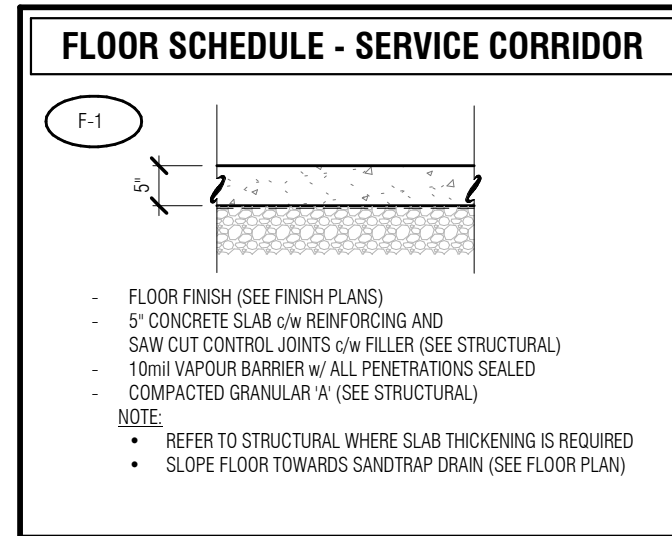
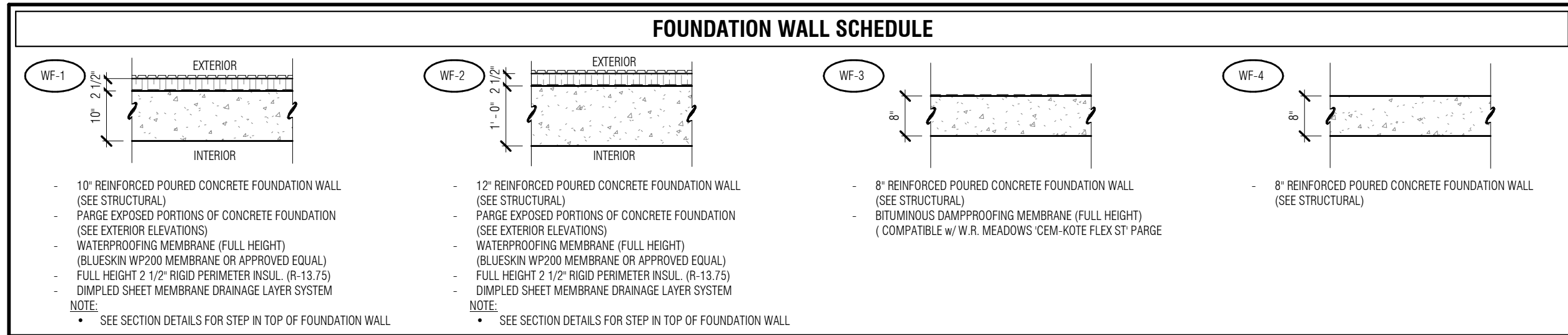
MR. LUBE®

MR. LUBE CANADA LP

21-108 HAZELDEAN RD.
STITTSVILLE. ON.

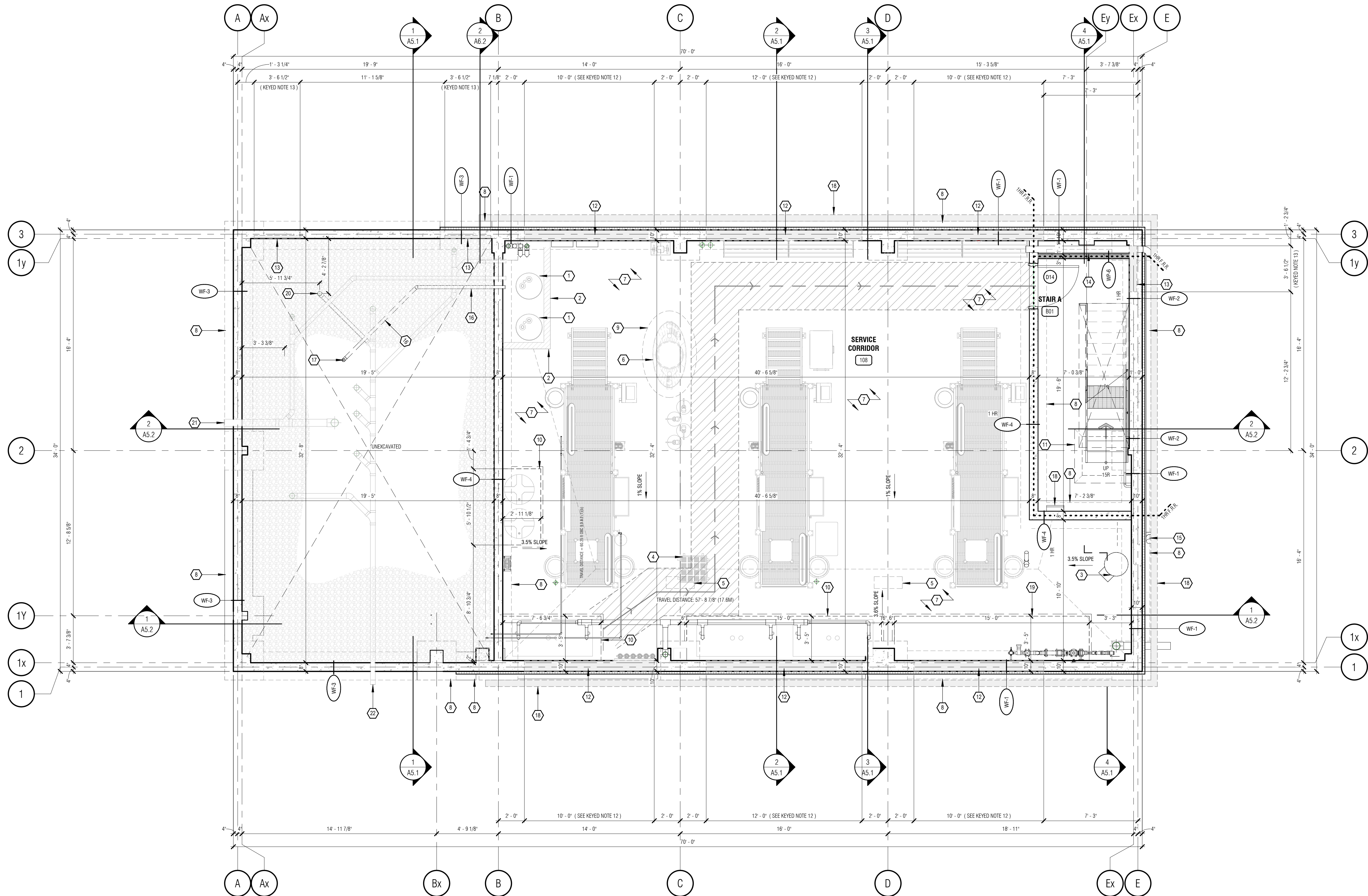
DRAWN: R.P.	CHECKED: P.P.	APPROVED: P.P.
DATE (MM.DD.YY): 01.19.21	SCALE: As indicated	JOB NUMBER: 21027

DRAWING NUMBER:	REVISION NUMBER:
A1.1	R1



- SERVICE PIT - FLOOR PLAN NOTES**
- ALL DIMENSIONS ON THIS DRAWING HAVE BEEN ROUNDED TO THE NEAREST 1/8" FOR CLARITY.
 - PARTITIONS WHICH SUPPORT FIXTURES, MALLWORK AND/OR ACCESSORIES ARE TO BE REINFORCED WITH WOOD STUDS, BLOCKING AND/OR PLYWOOD AS REQUIRED TO PROVIDE RIGID SUPPORT AND A FASTENING SURFACE.
 - GENERAL CONTRACTOR TO REVIEW ALL CRITICAL DIMENSIONS PRIOR TO CONSTRUCTION. ALL DISCREPANCIES IN EXISTING DIMENSIONS ARE TO BE REPORTED TO THE PROJECT MANAGER.
 - ALLOW IN YOUR TENDER FOR THE PATCHING AND REPAIRING OF ALL REMAINING SURROUNDING SURFACES EFFECTED BY THE INSTALLATION OF NEW COMPONENTS.
 - BUILDING SERVICES THAT PENETRATE A WALL OR FLOOR FIRE SEPARATION THAT IS REQUIRED TO HAVE A FIRE RESISTANCE RATING, SHALL BE SEALED AT THE PENETRATION BY A FIRE STOP SYSTEM THAT HAS AN FT RATING NOT LESS THAN FIRE RESISTANCE RATING FOR THE FIRE SEPARATION.
O.B.C. DIV. 8 - 5.1.3.1. (FIRE STOPPING OF SERVICE PENETRATIONS)
 - FIRE RATED WALLS TO EXTEND TO THE UNDERSIDE OF THE RATED HORIZONTAL ASSEMBLY ABOVE.
 - ALL COMPONENTS WITHIN A UL-C DESIGNATED FIRE SEPARATION ARE TO BE INSTALLED AS PER THEIR RESPECTIVE I.L.C. SYSTEM (I.E., STUD DESIGNATION, FASTENERS TYPE AND SPACING ETC.)
 - FLOOR DRAINS, SAND TRAP AND OIL INTERCEPTOR ARE TO BE PUMPED OUT AND CLEANED ONE WEEK PRIOR TO BUILDING TURNOVER. PLUMBER TO PROVIDE PICTURES OF ABOVE NOTED ELEMENTS BEING EMPTY AND CLEAN.
 - GENERAL CONTRACTOR TO ENSURE A POSITIVE SLOPE TO ALL FLOOR AND TRENCH DRAINS.
 - PLUMBING CONTRACTOR TO VERIFY ALL DRAIN LOCATIONS PRIOR TO THE FLOOR POUR.
 - GENERAL CONTRACTOR TO INSTALL EMERGENCY/EXIT LIGHTING SEE ELECTRICAL DRAWINGS. CONTRACTOR TO PROVIDE ELECTRICAL CONSULTANT WITH AN EMERGENCY LIGHTING TEST REPORT. (SEE ELECTRICAL)
 - EMERGENCY LIGHTING BATTERY PACKS TO BE INSTALLED AS HIGH AS POSSIBLE AND BE COORDINATED WITH SHELVING TO MAXIMIZE STORAGE.
 - REFER TO MECHANICAL, ELECTRICAL AND CIVIL DRAWINGS FOR NEW UNDERGROUND SERVICES.
 - SEE STRUCTURAL FOR FLOOR SLAB SAWCUT CONTROL JOINTS.

- SERVICE PIT - FLOOR PLAN KEYED NOTES**
- STORM / SANITARY SLUMP PITS c/w SEALED HEAVY DUTY STEEL COVER (SEE MECHANICAL)
 - POURED CONCRETE HOUSEKEEPING PAD. 6" PAINTED STRIP AT LEADING EDGE (SAFETY YELLOW)
 - HVAC DUCT. (SEE MECHANICAL)
 - SAND TRAP. (SEE MECHANICAL)
 - OPENING IN FLOOR ABOVE FOR OIL SUPPLY HOSES TO GUN CADDOE. (SEE EQUIPMENT SCHEDULE)
 - PROCEPTOR. (SEE MECHANICAL)
 - SLOPED CONCRETE FLOOR SLAB (1% min.), RUN OUT OF THE BAYS ONTO THE ACCESS CORRIDOR FLOOR.
 - CONCRETE STRIP FOOTINGS (SEE STRUCTURAL)
 - POURED CONCRETE BASE TO SUPPORT OIL INTERCEPTOR.
 - THICKENED SLAB FOR STAIR LANDING (SEE STRUCTURAL)
 - THICKENED SLAB FOR PRODUCT STORAGE TANKS (SEE STRUCTURAL)
 - 1/4" FOUNDATION WALL (ENTIRE WIDTH) TO BE LOWERED AT LOCATIONS OF GROUND FLOOR OIL DOORS. POUR GROUND FLOOR SLAB OVER FOUNDATION RECESS AS PER DETAIL 1/A6.5. DEPTH OF WALL RECESS AS REQUIRED BY THICKNESS OF MAIN FLOOR SLAB
 - 1/4" FOUNDATION WALL TO BE LOWERED (15" FROM INTERIOR FACE) AT LOCATIONS OF GROUND FLOOR PERSONNEL DOORS. POUR GROUND FLOOR SLAB OVER FOUNDATION RECESS AS PER DETAIL 1/A6.4. DEPTH OF WALL RECESS AS REQUIRED BY THICKNESS OF MAIN FLOOR SLAB
 - UNDERGROUND DUCT FOR ROUTING WASTE PRODUCT DISCHARGE LINES TO EXTERIOR STORAGE TANKS.
 - WASTE PRODUCT DISCHARGE LINE DUCT RISER THROUGH MAIN FLOOR SLAB.
 - UNDERGROUND CONDUIT FOR ROUTING OF FUTURE CABLE FROM OFFICE TO SERVICE CORRIDOR.
 - CONDUIT RISER THROUGH MAIN FLOOR SLAB FOR FUTURE CABLE.
 - WALL HEATER. (SEE MECHANICAL)
 - THICKENED SLAB FOR FUTURE PRODUCT STORAGE TANKS (SEE STRUCTURAL)
 - SANITARY CONNECTION FOR AIR COMPRESSOR HUB DRAIN (SEE OPCA)
 - STORM MAIN (SEE MECHANICAL)
 - SANITARY MAIN (SEE MECHANICAL)



1
A2.1
SERVICE CORRIDOR PLAN
1/4" = 1'-0"

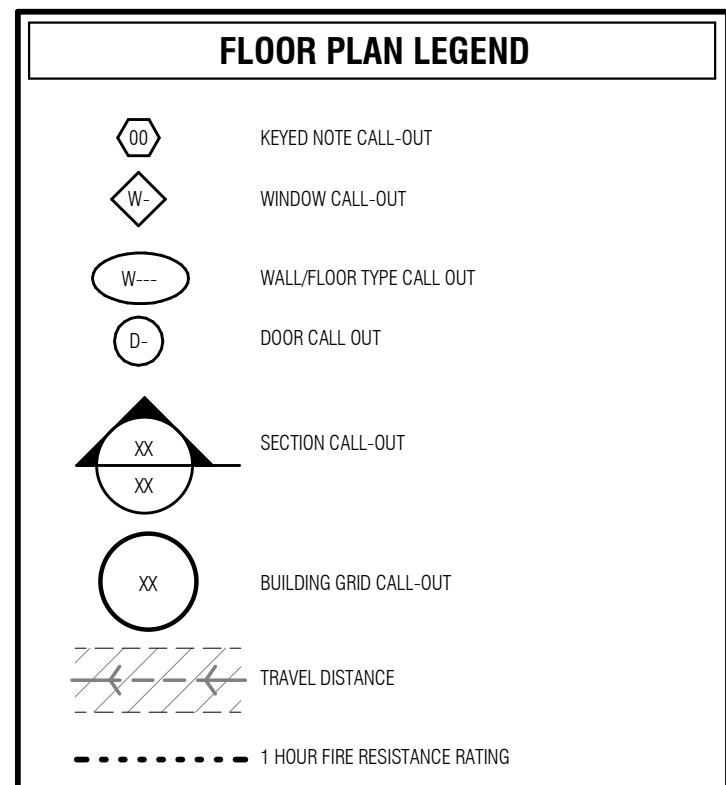
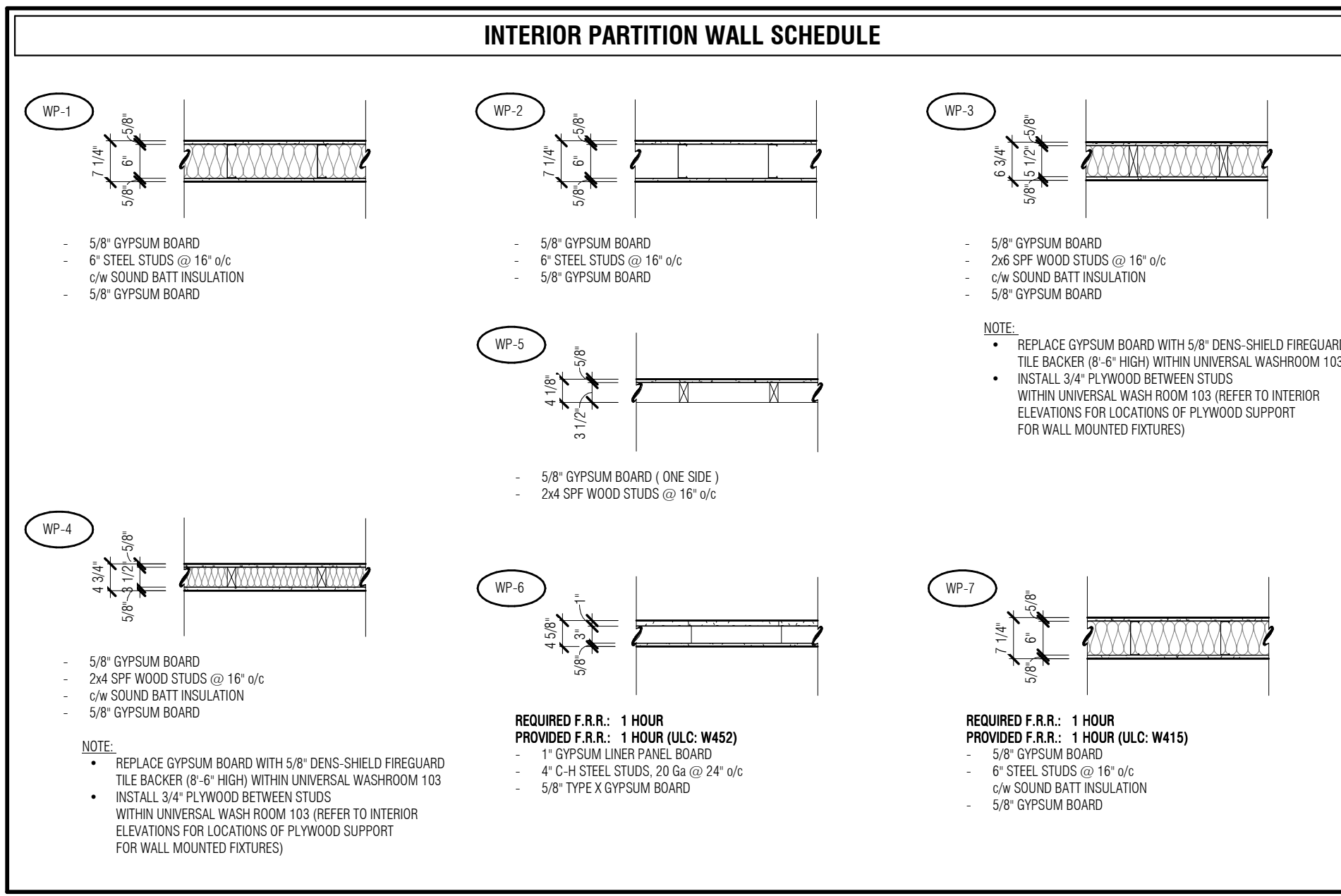
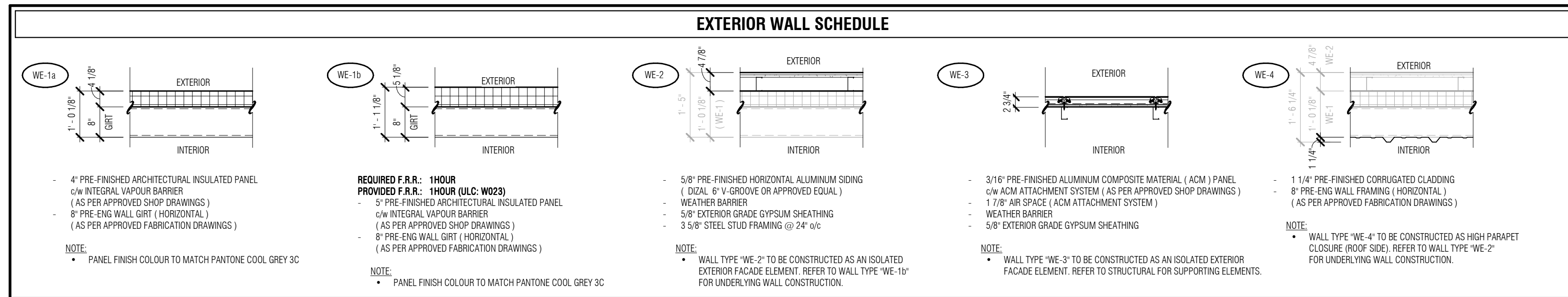
REV	DESCRIPTION	DATE
1	ISSUED FOR S.P.A.	01.22.2021



21-108 HAZELDEAN RD.
STITTVILLE, ON.

DRAWING:
BASEMENT PLAN

DRAWN: R.P.	CHECKED: P.P.	APPROVED: P.P.
DATE (MM.DD.YY): 01.19.21	SCALE: As indicated	JOB NUMBER: 21027
DRAWING NUMBER: A2.1	REVISION NUMBER: R1	

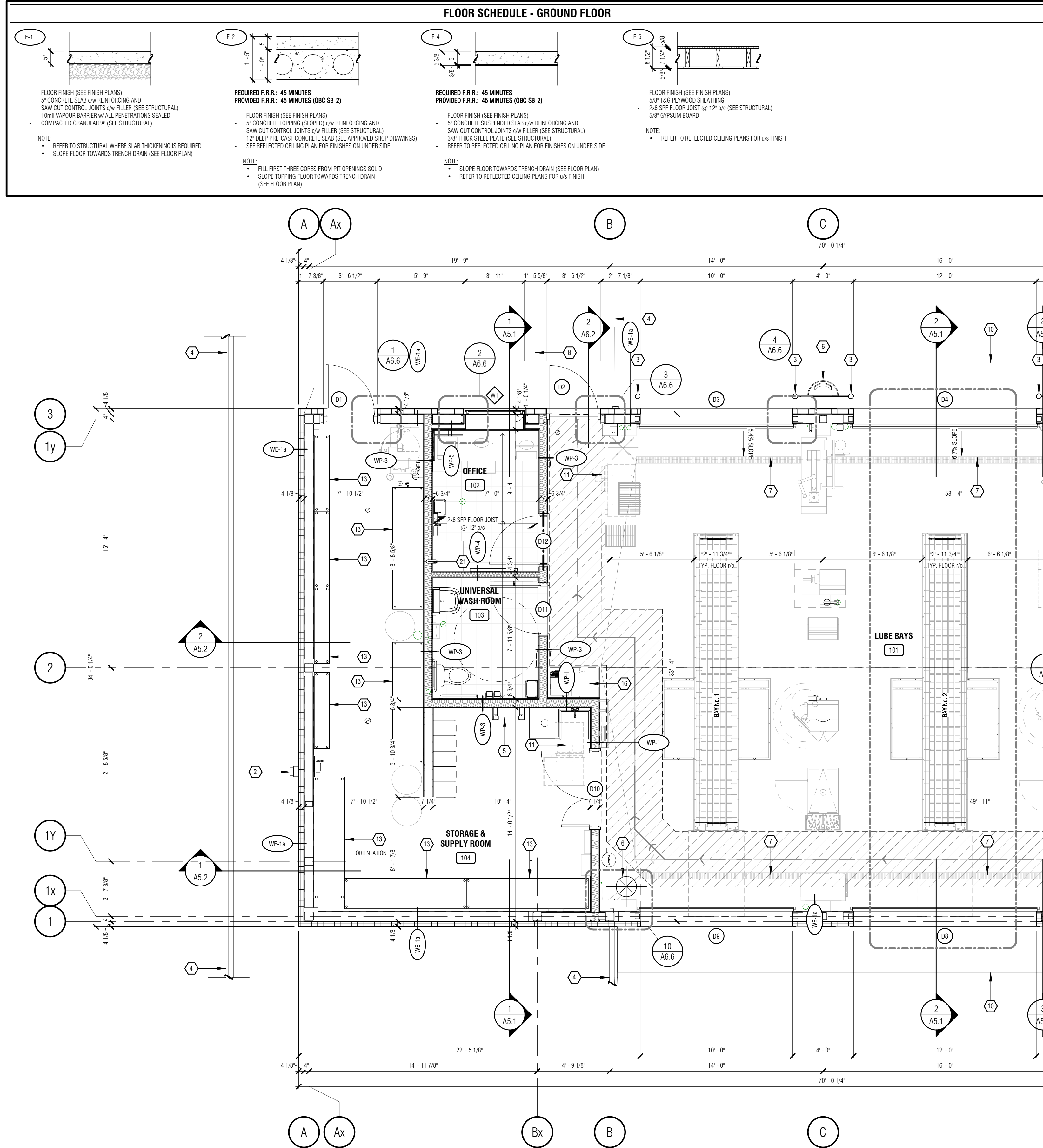


FLOOR PLAN NOTES

- ALL DIMENSIONS ON THIS DRAWING HAVE BEEN ROUNDED TO THE NEAREST 1/8" FOR CLARITY.
- PARTITIONS WHICH SUPPORT FIXTURES, MILLWORK AND/OR ACCESSORIES ARE TO BE REINFORCED WITH WOOD STUDS, BLOCKING AND/OR PLYWOOD AS REQUIRED TO PROVIDE RIGID SUPPORT AND A FASTENING SURFACE.
- GENERAL CONTRACTOR TO REVIEW ALL CRITICAL DIMENSIONS PRIOR TO CONSTRUCTION. ALL DISCREPANCIES IN EXISTING DIMENSIONS ARE TO BE REPORTED TO THE PROJECT MANAGER.
- ALLOW IN YOUR TENDER FOR THE PATCHING AND REPAIRING OF ALL REMAINING SUBSURFACES EFFECTED BY THE INSTALLATION OF NEW COMPONENTS.
- ALL STEEL STUD PARTITIONS ARE TO BE FULL HEIGHT, FRAMED @ 16" o/c AND PROVIDED WITH A TOP DEFLECTION TRACK, UNLESS NOTED OTHERWISE.
- ALL STEEL STUD PARTITIONS 12'-0" OR HIGHER ARE TO BE DESIGNED BY THE DRYWALL CONTRACTOR'S ENGINEER. SEALED SHOP DRAWINGS TO BE PROVIDED TO THE STRUCTURAL ENGINEER.
- BUILDING SERVICES THAT PENETRATE A WALL OR FLOOR FIRE SEPARATION THAT IS REQUIRED TO HAVE A FIRE RESISTANCE RATING, SHALL BE SEALED AT THE PENETRATION BY A FIRE STOP SYSTEM THAT HAS AN FT RATING NOT LESS THAN FIRE RESISTANCE RATING FOR THE FIRE SEPARATION.
- GENERAL CONTRACTOR TO ENSURE GYPSUM BOARD IS CONTINUOUS AT ALL FIRE SEPARATIONS.
- GENERAL CONTRACTOR TO ENSURE ALL JOINTS ARE TAPED AND THE PERIMETER OF ALL FIRE SEPARATION WALLS ARE SEALED TO ADJACENT MATERIALS AND SURFACES.
- FIRE RATED WALLS TO EXTEND TO THE UNDERSIDE OF THE RATED HORIZONTAL ASSEMBLY ABOVE.
- ALL COMPONENTS WITHIN A ULC DESIGNATED FIRE SEPARATION ARE TO BE INSTALLED AS PER THEIR RESPECTIVE ULC SYSTEM. (E.G., STUD DESIGNATION, FASTENERS TYPE AND SPACING ETC.)
- DOOR AND WINDOW MANUFACTURER(S) TO SITE VERIFY ALL DIMENSIONS PRIOR TO FABRICATION.
- GENERAL CONTRACTOR TO INSTALL ALL DOORS A MINIMUM OF 3" OFF ANY ADJACENT WALL UNLESS DIMENSIONED OTHERWISE.
- ALL FLOOR DRAINS TO BE INSPECTED BY A PLUMBER ONE WEEK PRIOR TO BUILDING TURNOVER TO ENSURE DRAINS ARE IN GOOD WORKING ORDER. CLEAN DRAIN AND TRAP OF DEBRIS.
- GENERAL CONTRACTOR TO ENSURE A POSITIVE SLOPE TO ALL FLOOR AND TRENCH DRAINS.
- PLUMBING CONTRACTOR TO VERIFY ALL DRAIN LOCATIONS PRIOR TO THE FLOOR POUR.
- GENERAL CONTRACTOR TO PROVIDE GYPSUM WALL BOARD CONTROL JOINTS IN ALL WALLS. CONTROL JOINTS ARE TO BE STRAIGHT, CONTINUOUS AND INSTALLED 30'-0" o.c. MAXIMUM OR AS INDICATED ON THE DRAWINGS AND AT AREAS OF ANTICIPATED DEFLECTION, TWISTING AND SWAGING, WHERE LOCATED WITHIN A FIRE SEPARATION, THE CONTROL JOINT SHALL BE SEALED AT THE PENETRATION BY A FIRE STOP SYSTEM THAT HAS AN FT RATING NOT LESS THAN FIRE RESISTANCE RATING FOR THE FIRE SEPARATION.
- PROVIDE SOFT WEATHER TIGHT JOINTS AT ALL ADJACENT MATERIALS AND SURFACES AS PER MANUFACTURER'S SPECIFICATIONS.
- GENERAL CONTRACTOR TO INSTALL EMERGENCY EXIT LIGHTING SEE ELECTRICAL DRAWINGS. CONTRACTOR TO PROVIDE ELECTRICAL CONSULTANT WITH AN EMERGENCY LIGHTING TEST REPORT. (SEE ELECTRICAL).
- EMERGENCY LIGHTING BATTERY PACKS TO BE INSTALLED AS HIGH AS POSSIBLE AND BE COORDINATED WITH SHELVING TO MAXIMIZE STORAGE.
- REFER TO MECHANICAL, ELECTRICAL AND CIVIL DRAWINGS FOR NEW UNDERGROUND SERVICES.
- SEE STRUCTURAL FOR FLOOR SLAB SAWCUT CONTROL JOINTS.
- CONTRACTOR TO RETAIN A 3rd PARTY ENGINEER TO PROVIDED REVIEWS & REPORTS FOR DIRECTION OF PRE-ENGINEERED STEEL FRAME. TO ENSURE CONFORMITY WITH ENGINEERED SHOP DRAWINGS, 3RD PARTY ENGINEER TO PROVIDE DOCUMENTATION TO BE SUBMITTED TO BUILDING DEPARTMENT TO SATISFY BUILDING PERMIT & OCCUPANCY REQUIREMENTS.

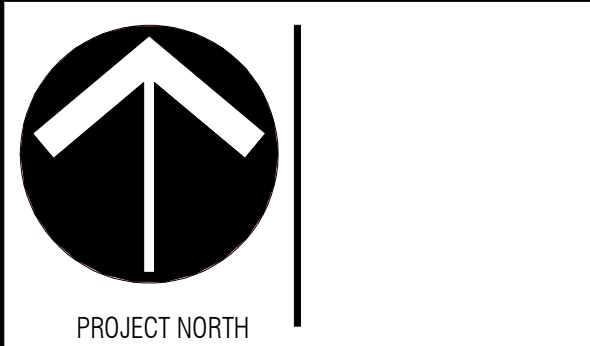
GROUND - FLOOR PLAN KEYED NOTES

- GENERAL CONTRACTOR TO COORDINATE WITH LOCAL UTILITIES TO LOCATE GAS METER AND RUN GAS LINES. (SEE MECHANICAL.)
- GENERAL CONTRACTOR TO COORDINATE WITH LOCAL UTILITIES TO LOCATE HYDRO METER AND ELECTRICAL SERVICE. (SEE ELECTRICAL.)
- 4" DIA. CONCRETE FILLED STEEL PIPE BOLLARDS. (SEE DETAIL.)
- LINE OF CONCRETE CURB / SIDEWALK. (SEE SITE PLAN)
- STEEL ACCESS LADDER AS PER APPROVED SHOP DRAWINGS. (SEE DETAIL.)
- HVAC DUCT. (SEE MECHANICAL)
- TRENCH DRAIN. (SEE MECHANICAL)
- 6" CONCRETE FROST SLAB. (SEE STRUCTURAL)
- GARBAGE CAN SUPPORTS (SEE DETAILS ON A6.7)
- 3'-0" WIDE CONCRETE APRON. (SEE STRUCTURAL)
- GAS FIRED UNIT HEATER, ABOVE. (SEE MECHANICAL)
- N/A
- ADJUSTABLE WIRE SHELVING (SEE EQUIPMENT PLAN)
- FIXTURES AND EQUIPMENT SHOWN WITH DASHED LINES (TYP). (SEE FIXTURE LAYOUT)
- N/A
- COFFEE STATION (SEE MILLWORK)
- N/A
- N/A
- N/A
- WASTE PRODUCT DISCHARGE LINE DUCT RISER THROUGH MAIN FLOOR SLAB.
- CONDUIT RISER THROUGH MAIN FLOOR SLAB FOR FUTURE CABLE.



1 GROUND FLOOR PLAN
A2.2 1/4" = 1'-0"

REV	DESCRIPTION	DATE
1	ISSUED FOR S.P.A.	01.22.2021
R-##	- REVISION	
S-##	- ISSUED	
A-##	- APPROVAL	



Greystone

Kitchener
100 Conestoga College Blvd, Unit 1116
Kitchener, Ontario N2P 2H6
(519) 896-1010 ext.100
info@greystoneinc.ca
www.greystoneinc.ca

Toronto
2999 Lakeshore Blvd West
Toronto, Ontario M8V 1J8
(416) 901-6446

PROJECT FOR:

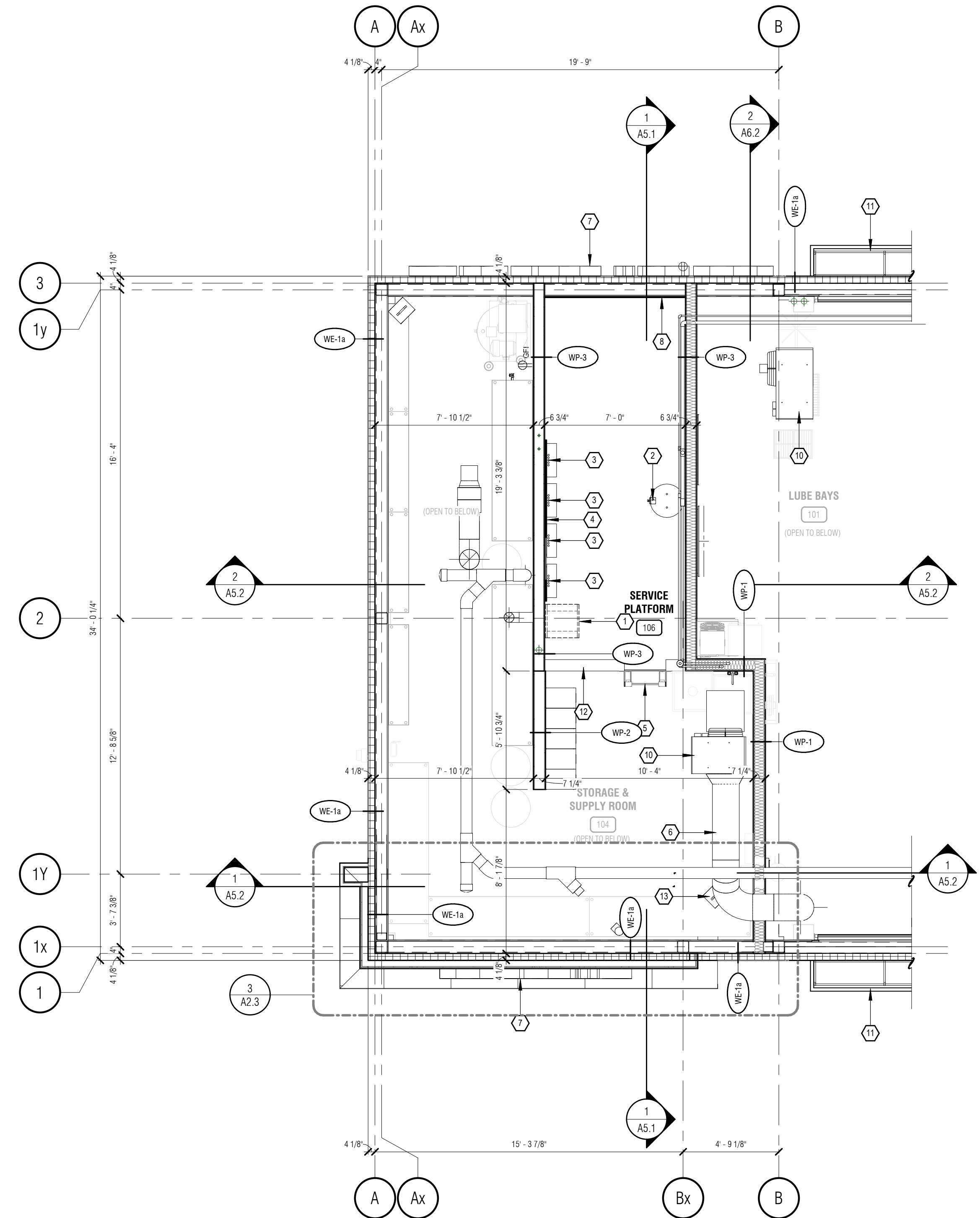
MR. LUBE
MR. LUBE CANADA LP

PROJECT:
NEW BUILD - STITTSVILLE

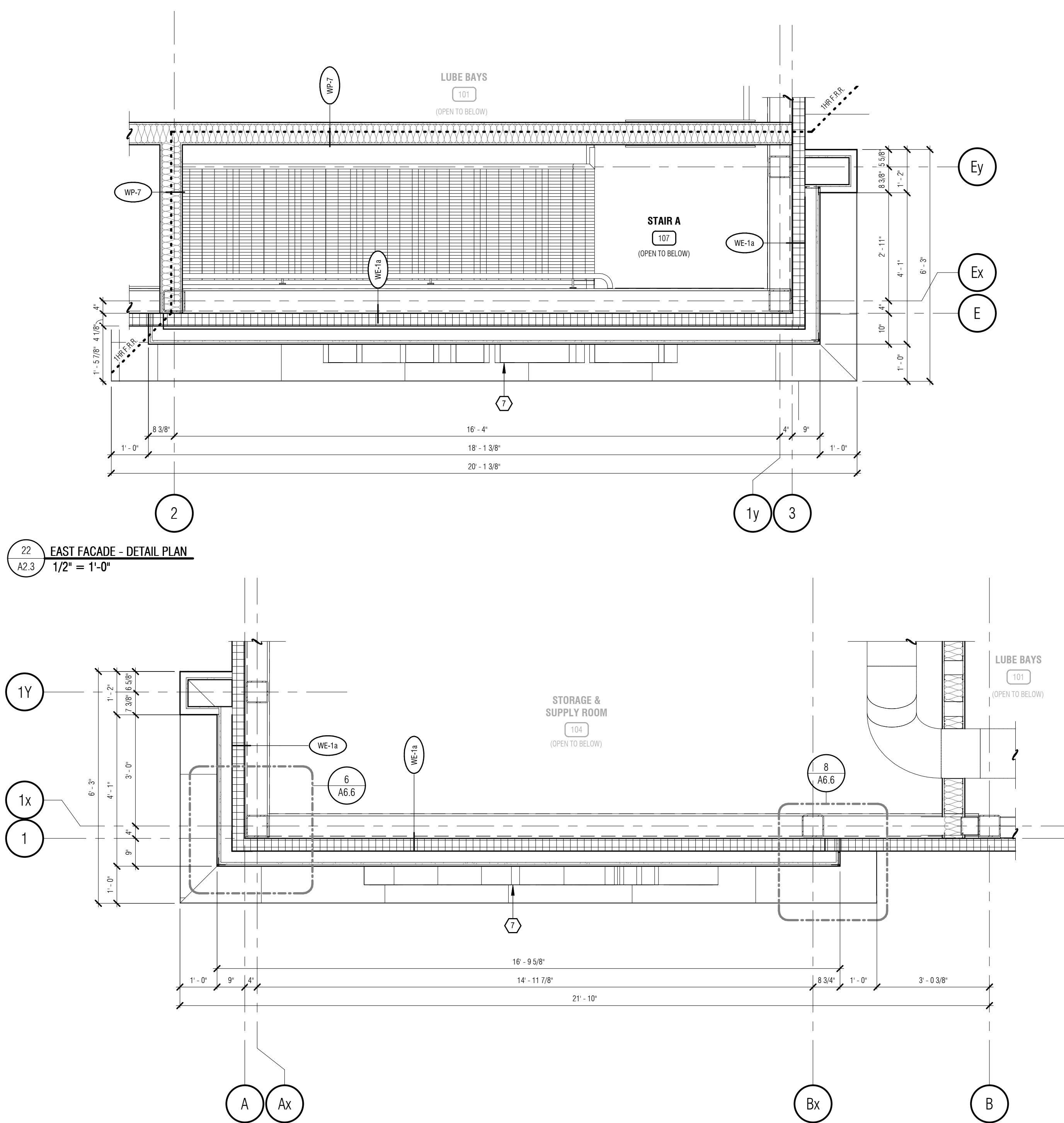
21-108 HAZELDEAN RD.
STITTSVILLE, ON.

DRAWING:
GROUND FLOOR PLAN

DRAWN: J.B./R.P.	CHECKED: S.S./J.B.	APPROVED: P.P.
DATE (MM.DD.YY): 01.19.21	SCALE: As indicated	JOB NUMBER: 21027
DRAWING NUMBER: A2.2	REVISION NUMBER: R1	

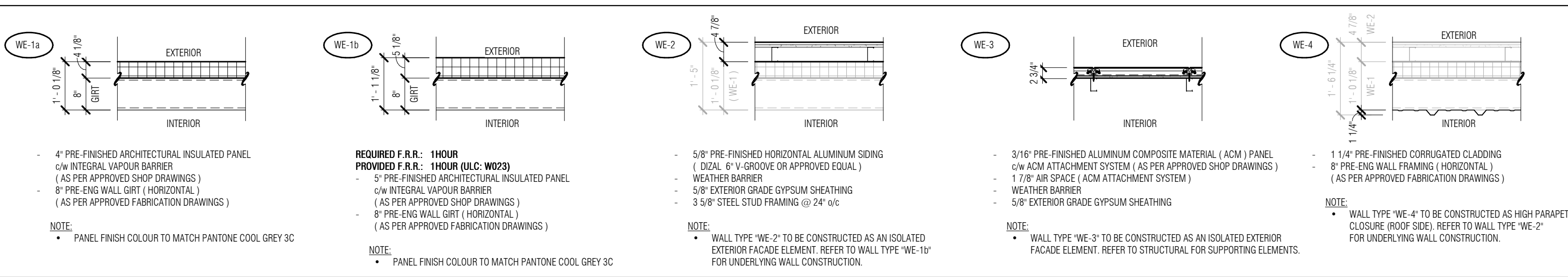


1 SERVICE PLATFORM PLAN
1/4" = 1'-0"

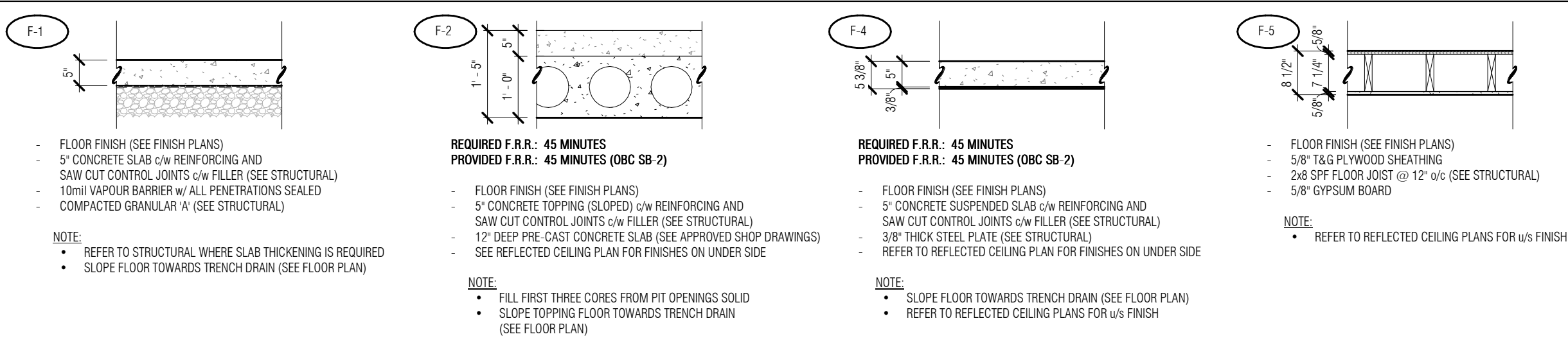


3 SOUTH FACADE - DETAIL PLAN
1/2" = 1'-0"

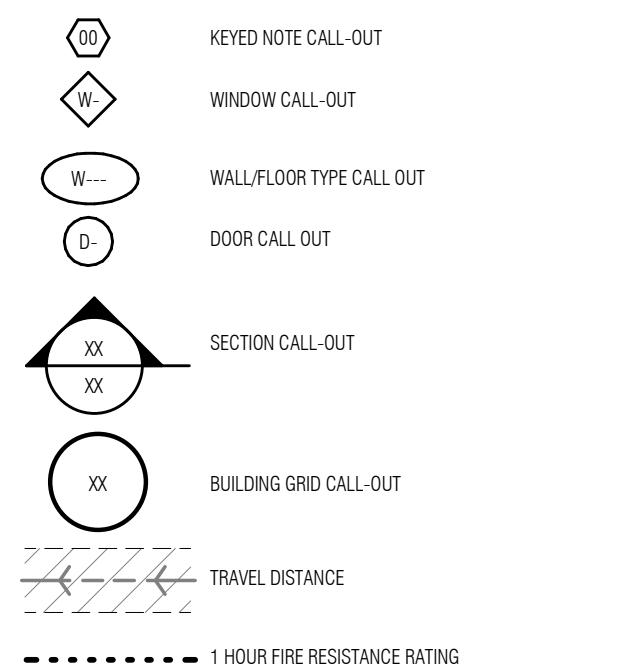
EXTERIOR WALL SCHEDULE



FLOOR SCHEDULE - GROUND FLOOR



FLOOR PLAN LEGEND



PLATFORM - FLOOR PLAN KEYED NOTES

- TRANSFORMER INSTALLED AT HIGH LEVEL WITH G.C. SUPPLIED WALL BRACKETS (SEE M MECHANICAL.)
- HOT WATER TANK (SEE MECHANICAL)
- ELECTRICAL PANELS (SEE ELECTRICAL)
- 3/4\"/>

FLOOR PLAN NOTES

- ALL DIMENSIONS ON THIS DRAWING HAVE BEEN ROUNDED TO THE NEAREST 1/8\"/>
- PARTITIONS WHICH SUPPORT FIXTURES, MILLWORK AND/OR ACCESSORIES ARE TO BE REINFORCED WITH WOOD STUDS, BLOCKING AND/OR PLYWOOD AS REQUIRED TO PROVIDE RIGID SUPPORT AND A FASTENING SURFACE.
- GENERAL CONTRACTOR TO REVIEW ALL CRITICAL DIMENSIONS PRIOR TO CONSTRUCTION. ALL DISCREPANCIES IN EXISTING DIMENSIONS ARE TO BE REPORTED TO THE PROJECT MANAGER.
- ALLOW IN YOUR TENDER FOR THE PATCHING AND REPAIRING OF ALL REMAINING SURROUNDING SURFACES EFFECTED BY THE INSTALLATION OF NEW COMPONENTS.
- ALL STEEL STUD PARTITIONS ARE TO BE FULL HEIGHT, FRAMED @ 16\"/>
- ALL STEEL STUD PARTITIONS 12'-0\"/>
- BUILDING SERVICES THAT PENETRATE A WALL OR FLOOR/FIRE SEPARATION THAT IS REQUIRED TO HAVE A FIRE RESISTANCE RATING, SHALL BE SEALED AT THE PENETRATION BY A FIRE STOP SYSTEM THAT HAS AN FT RATING NOT LESS THAN FIRE RESISTANCE RATING FOR THE FIRE SEPARATION.
0.6c, 0.6, B, 3.1.5.1, FIRE STOPPING OF SERVICE PENETRATIONS
- GENERAL CONTRACTOR TO ENSURE GYPSUM BOARD IS CONTINUOUS AT ALL FIRE SEPARATIONS.
- GENERAL CONTRACTOR TO ENSURE ALL JOINTS ARE TAPED AND THE PERIMETER OF ALL FIRE SEPARATION WALLS ARE SEALED TO ADJACENT MATERIALS AND SURFACES.
- FIRE RATED WALLS TO EXTEND TO THE UNDERSIDE OF THE RATED HORIZONTAL ASSEMBLY ABOVE.
- ALL COMPONENTS WITHIN A UL DESIGNATED FIRE SEPARATION ARE TO BE INSTALLED AS PER THEIR RESPECTIVE UL SYSTEM (I.E., STUD DESIGNATION, FASTENERS TYPE AND SPACING ETC.)
- DOOR AND WINDOW MANUFACTURER(S) TO SITE VERIFY ALL DIMENSIONS PRIOR TO FABRICATION.
- GENERAL CONTRACTOR TO INSTALL ALL DOORS A MINIMUM OF 3\"/>
- ALL FLOOR DRAINS TO BE INSPECTED BY A PLUMBER ONE WEEK PRIOR TO BUILDING TURNOVER TO ENSURE DRAINS ARE IN GOOD WORKING ORDER, CLEAN DRAIN AND TRAP OF DEBRIS.
- GENERAL CONTRACTOR TO ENSURE A POSITIVE SLOPE TO ALL FLOOR AND TRENCH DRAINS.
- PLUMBING CONTRACTOR TO VERIFY ALL DRAIN LOCATIONS PRIOR TO THE FLOOR POUR.
- GENERAL CONTRACTOR TO PROVIDE GYPSUM WALL BOARD CONTROL JOINTS IN ALL WALLS. CONTROL JOINTS ARE TO BE STRAIGHT, CONTINUOUS AND INSTALLED 30'-0\"/>
- GENERAL CONTRACTOR TO PROVIDE ELECTRICAL CONSULTANT WITH AN EMERGENCY LIGHTING TEST REPORT. (SEE ELECTRICAL)
- EMERGENCY LIGHTING BATTERY PACKS TO BE INSTALLED AS HIGH AS POSSIBLE AND BE COORDINATED WITH SHELVING TO MAXIMIZE STORAGE.
- REFER TO MECHANICAL, ELECTRICAL AND CIVIL DRAWINGS FOR NEW UNDERGROUND SERVICES.
- SEE STRUCTURAL FOR FLOOR SLAB SAWCUT CONTROL JOINTS.
- CONTRACTOR TO RETAIN A 3rd PARTY ENGINEER TO PROVIDED REVIEWS & REPORTS FOR ERECTION OF PRE-ENGINEERED STEEL FRAME, TO ENSURE CONFORMITY WITH ENGINEERED SHOP DRAWINGS, 3RD PARTY ENGINEER TO PROVIDE DOCUMENTATION TO BE SUBMITTED TO BUILDING DEPARTMENT TO SATISFY BUILDING PERMIT & OCCUPANCY REQUIREMENTS.

2	ISSUED FOR REVIEW	XXXXX2021
1	ISSUED FOR S.P.A.	01.22.2021
REV	DESCRIPTION	DATE
R-##	- REVISION	
S-##	- ISSUED	
A-##	- APPROVAL	



Greystone
Kitchener
100 Conestoga College Blvd, Unit 1116
Kitchener, Ontario N2P 2H6
(519) 896-1010 ext.100
info@greystoneinc.ca
www.greystoneinc.ca

Toronto
2999 Lakeshore Blvd West
Toronto, Ontario M8V 1J8
(416) 901-6446

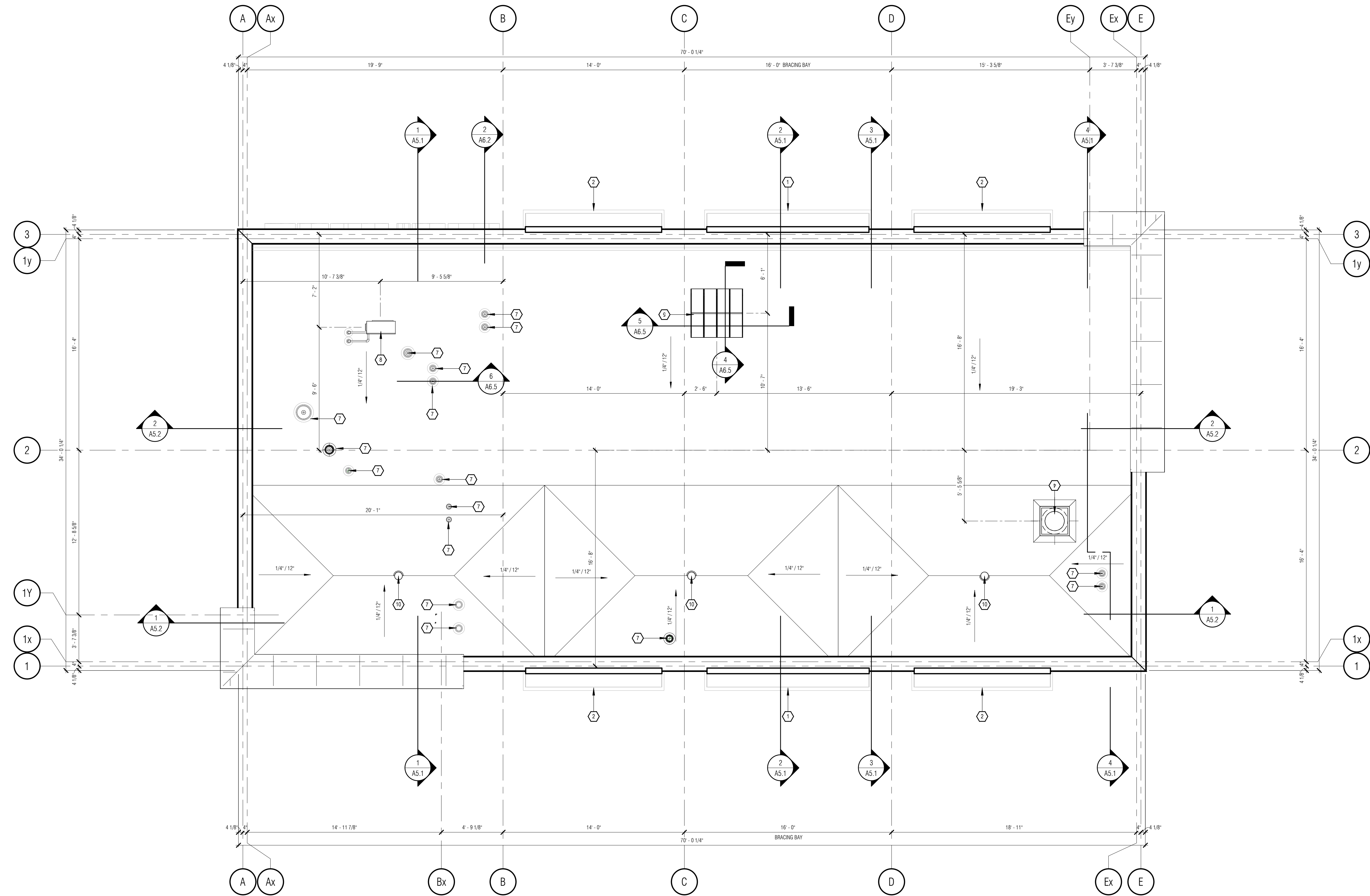
PROJECT FOR:
MR. LUBE
MR. LUBE CANADA LP

PROJECT:
NEW BUILD - STITTVILLE

21-108 HAZELDEAN RD.
STITTVILLE, ON.

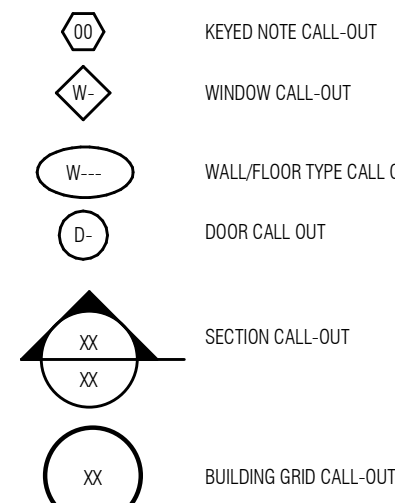
SERVICE PLATFORM PLANS

DRAWN: J.B./R.P.	CHECKED: S.S./J.B.	APPROVED: J.V./P.P.
DATE (MM.DD.YY): 01.19.21	SCALE: As indicated	JOB NUMBER: 21027
DRAWING NUMBER: A2.3	REVISION NUMBER: R2	



1 ROOF PLAN
A2.4 1/4" = 1'-0"

FLOOR PLAN LEGEND



TRAVEL DISTANCE

1 HOUR FIRE RESISTANCE RATING

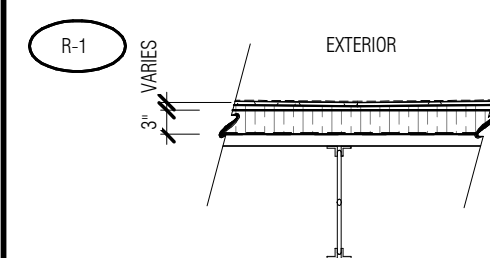
ROOF PLAN NOTES

- ALL DIMENSIONS ON THIS DRAWING HAVE BEEN ROUNDED TO THE NEAREST 1/8" FOR CLARITY.
- LOCATION AND NUMBER OF PLUMBING VENT STACKS TO BE CONFIRMED ON SITE. SEE DETAIL FOR VENT STACK FLASHING.
- ALL ROOF WORK IS TO BE COORDINATED WITH MECHANICAL, ELECTRICAL, AND STRUCTURAL. IT IS THE RESPONSIBILITY OF THE GENERAL CONTRACTOR TO ORGANIZE ALL WORK IN A MANNER AS TO LIMIT ANY PROJECT DELAYS.
- ALL ELECTRICAL AND MECHANICAL PIPE PENETRATIONS ARE TO BE SEALED TO STANDING SEAM CLADDING USING DEKITE FLEXIBLE WRAP AROUND BOOT.
- COORDINATE LOCATION OF ROOF DRAINS ON SITE.
- THE HEIGHT OF THE ROOF TOP UNIT CURBS TO BE A MINIMUM OF 4" ABOVE THE SCUPPER HEIGHT.
- ALL ROOF MATERIALS, ACCESSORIES AND WORKMANSHIP MUST BE WARRANTED FOR TEN YEARS FROM DATE OF SUBSTANTIAL COMPLETION.
- TAPERED INSULATION SHOP DRAWINGS TO BE PROVIDED TO THE ARCHITECT AND ENGINEERS FOR REVIEW AND APPROVAL PRIOR TO CONSTRUCTION.
- PARAPET HEIGHTS TO BE CONFIRMED PRIOR TO CONSTRUCTION. ALL HEIGHTS TO BE ADJUSTED AS REQUIRED TO ALLOW FOR PROPER INSTALLATION OF TAPERED INSULATION. ANY DEVIATIONS FROM THE CONSTRUCTION DRAWINGS ARE SUBJECT TO APPROVAL.
- CONTRACTOR TO RETAIN A 3rd PARTY ENGINEER TO PROVIDE REVIEWS & REPORTS FOR ERECTION OF PRE-ENGINEERED STEEL FRAME. TO ENSURE CONFORMITY WITH ENGINEERED SHOP DRAWINGS. 3RD PARTY ENGINEER TO PROVIDE DOCUMENTATION TO BE SUBMITTED TO BUILDING DEPARTMENT TO SATISFY BUILDING PERMIT & OCCUPANCY REQUIREMENTS.
- ALL ROOF ACCESSORIES REQUIRED TO SUPPORT AND SEAL THE STANDING SEAM ROOF SHALL BE PROVIDED BY THE GENERAL CONTRACTOR. ALL ACCESSORIES SHALL BE APPROVED FOR USE WITH THE STANDING SEAM ROOF PRIOR TO CONSTRUCTION START.
- ROOF CURBS BY DESIGN COMPONENTS INC. OR CURBER MANUFACTURING INC.

ROOF PLAN KEYED NOTES

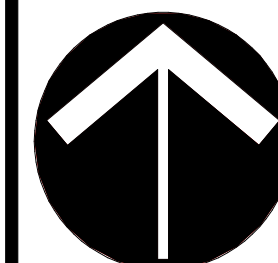
- 1/2'-6" LONG WALL MOUNTED AWNING (BELOW) BY OTHERS
- 10'-6" LONG WALL MOUNTED AWNING (BELOW) BY OTHERS
- N/A
- ROOF TOP EXHAUST FAN (SEE MECHANICAL)
- GRAVITY INTAKE HOOD (MUA) (SEE MECHANICAL)
- N/A
- PENETRATIONS TO BE COORDINATED WITH MECHANICAL
- ROOFTOP CONDENSING UNIT (SEE MECHANICAL)
- N/A
- ROOF DRAIN (SEE MECHANICAL)
- N/A
- N/A
- ROOFTOP VENT COLLECTION HOUSING UNIT TO BE BY ALTA PRODUCTS LLC. OR ROOF PENETRATION HOUSING LLC.

ROOF SCHEDULE



- 60mil TPO ROOF MEMBRANE
 - 1/2" SECURLOCK PROTECTION BOARD
 - TAPERED INSULATION (WHERE INDICATED AS COUNTER SLOPE TO ROOF DRAINS)
 - 3" MECHANICALLY FASTENED RIGID POLYSTY. INSULATION (R-15.8) MINIMUM.
 - VAPOUR BARRIER
 - STEEL ROOF DECK (SEE STRUCTURAL)
 - O.W.S.J. SLOPED (SEE STRUCTURAL)
- NOTE:
- CONTRACTOR TO OBTAIN 10 YEAR MANUFACTURERS' WARRANTY FULL SYSTEM INCLUDING LABOUR & MATERIAL.

REV	DESCRIPTION	DATE
1	ISSUED FOR S.P.A.	01.22.2021



PROJECT NORTH



PROJECT FOR:



PROJECT:

NEW BUILD - STITTSVILLE

21-108 HAZELDEAN RD.
STITTSVILLE, ON.

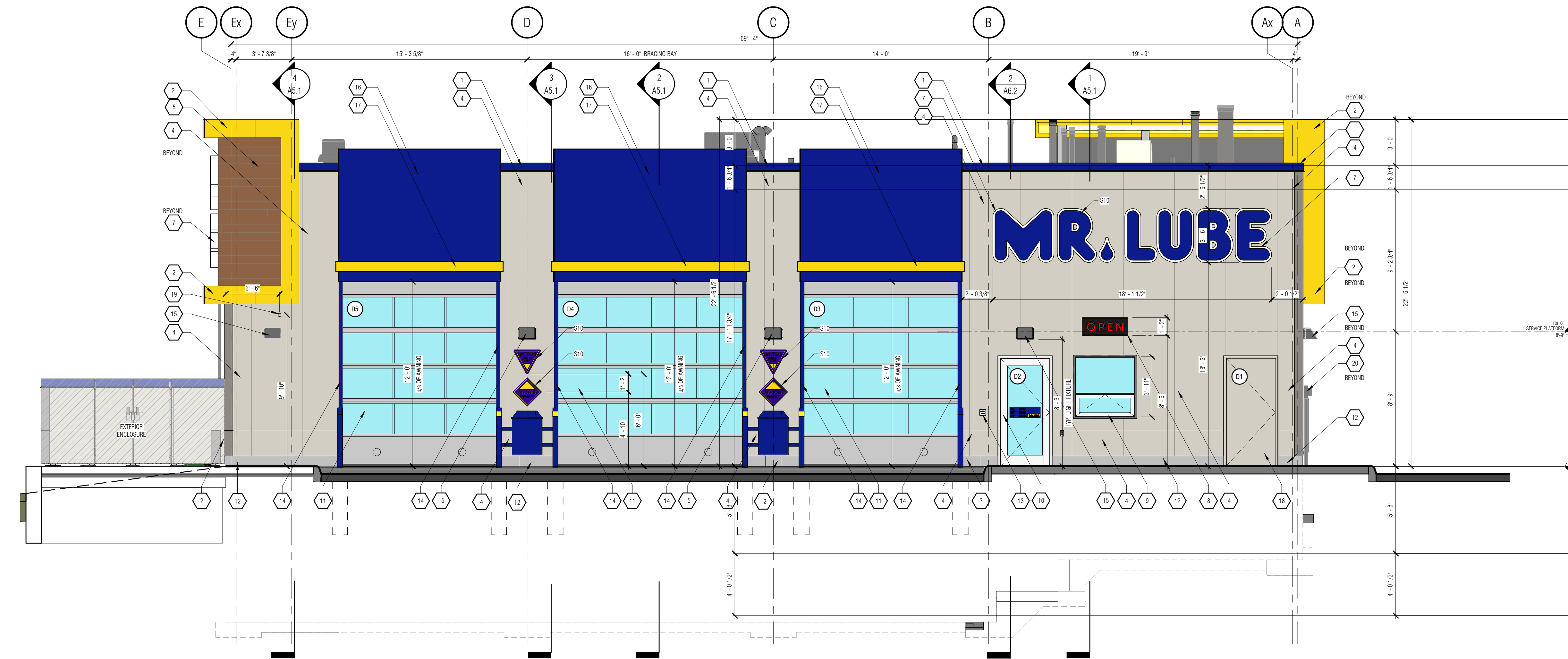
DRAWING:

ROOF PLAN

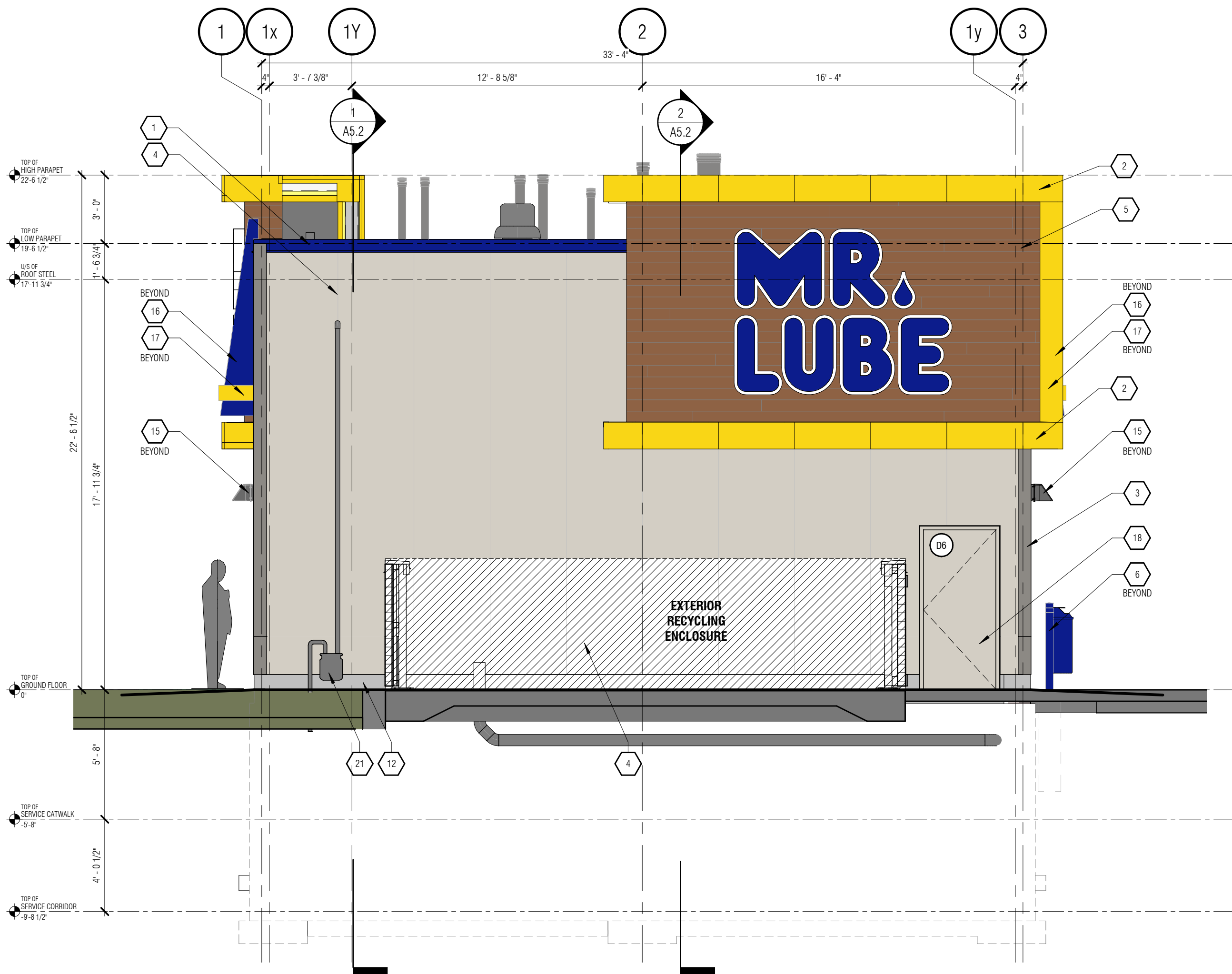
DRAWN: R.P.	CHECKED: P.P.	APPROVED: P.P.
DATE (MM.DD.YY): 01.19.21	SCALE: As indicated	JOB NUMBER: 21027

DRAWING NUMBER: A2.4

REVISION NUMBER: R1



1 NORTH ELEVATION
1/4" = 1'-0"



2 EAST ELEVATION
1/4" = 1'-0"



4 NORTH EAST - 3D VIEW
A4.1

EXTERIOR ELEVATION LEGEND

- KEYED NOTE CALL-OUT
- GRAPHIC CALL-OUT (SEE SIGNAGE SCHEDULE)
- FINISH CALL-OUT (SEE FINISH SCHEDULE)
- SECTION CALL-OUT
- BUILDING GRID CALL-OUT
- DOOR CALL-OUT
- WINDOW CALL-OUT

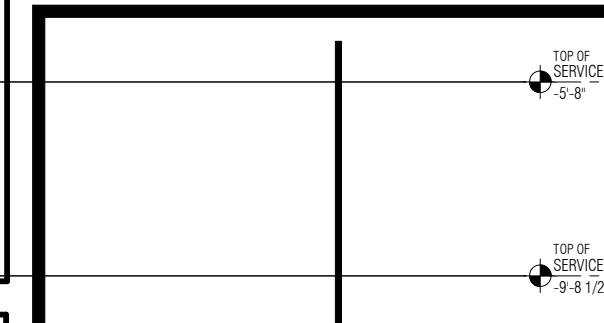
EXTERIOR ELEVATION NOTES

- ALL DIMENSIONS ON THIS DRAWING HAVE BEEN ROUNDED TO THE NEAREST 1/8" FOR CLARITY.
- THE APPROVED BUILDING ELEVATIONS SHALL FORM THE BASIS FOR THE BUILDING PERMIT APPLICATION.
- ALL EXISTING GRADES ARE TO BE REVIEWED PRIOR TO CONSTRUCTION BY THE GENERAL CONTRACTOR. ALL DISCREPANCIES IN THE EXISTING GRADES ARE TO BE REPORTED TO THE PROJECT MANAGER.
- ALL EXTERIOR SIGNS ARE SUPPLIED AND INSTALLED BY MR. LUBE SIGNAGE COMPANY (SEE GRAPHIC SCHEDULE). GENERAL CONTRACTOR IS RESPONSIBLE TO PROVIDE ALL NECESSARY ELECTRICAL POWER AND DISCONNECT SWITCH TO EACH SIGN AS REQUIRED. GENERAL CONTRACTOR IS RESPONSIBLE TO HOOK UP ELECTRICAL POWER TO EACH SIGN.
- ANY SUBSTANTIVE CHANGE(S) OR MODIFICATIONS TO THE APPROVED BUILDING ELEVATION(S) SHALL REQUIRE A MODIFICATION TO THE APPROVED BUILDING ELEVATION DRAWINGS BY THE DELEGATED SITE PLAN APPROVAL AUTHORITY.
- GENERAL CONTRACTOR IS RESPONSIBLE FOR ALL EXTERIOR PAINT WORK.
- GENERAL CONTRACTOR TO PROVIDE AND INSTALL ALL SCAFFOLDING. SCAFFOLDING DESIGN TO BE STAMPED BY A QUALIFIED ENGINEER TO MEET MINISTRY GUIDELINES.
- BUILDING COLOURS MAY BE SUBJECT TO MINOR ADJUSTMENTS IN TONE AND/OR SHADE.
- ANY PROPOSED SIGNAGE IS FOR ILLUSTRATION PURPOSES AND SUBJECT TO CITY SIGN BY LAWS.
- GENERAL CONTRACTOR TO PAINT ALL EXPOSED VENT PIPES ON ROOF (COLOUR P17). SEE FINISH SCHEDULE.
- GENERAL CONTRACTOR TO SEAL ALL PENETRATIONS THROUGH WALL TO PREVENT WATER LEAKS.
- ALL EXTERIOR ELECTRICAL OUTLETS TO BE SEALED AND FINISHED IN A PROFESSIONAL MANNER. ANY CRACKS OR POORLY INSTALLED OUTLETS ARE SUBJECT TO REINSTALLATION AND ALL COSTS ASSOCIATED WILL BE PAID BY THE GENERAL CONTRACTOR.
- PROVIDE SOFT WEATHER TIGHT JOINTS AT ALL ADJACENT MATERIALS AND SURFACES AS PER MANUFACTURERS SPECIFICATIONS.
- EXTERIOR CLADDING SHALL BE APPLIED AS PER THE MANUFACTURERS RECOMMENDATIONS AND DETAILS.

EXTERIOR ELEVATION KEYED NOTES

- 1 PREFINISHED METAL CAP FLASHING
COLOUR: 'MR. LUBE BLUE'
FINISH SCHEDULE ITEM TAG: P9
- 2 PREFINISHED ALUMINUM COMPOSITE MATERIAL (ACM) PANEL
COLOUR: 'MR. LUBE YELLOW'
FINISH SCHEDULE ITEM TAG: ACM2
- 3 PREFINISHED ARCHITECTURAL INSULATED WALL PANEL
COLOUR: 'MR. LUBE SLATE'
FINISH SCHEDULE ITEM TAG: IMP2
- 4 PREFINISHED ARCHITECTURAL INSULATED WALL PANEL
COLOUR: 'MR. LUBE SILVER'
FINISH SCHEDULE ITEM TAG: IMP1
- 5 PREFINISHED HORIZONTAL ALUMINUM SIDING
MANUFACTURER: DIAL (6" V-GROOVE)
COLOUR: CUMARU - VARIEGATED LIGHT 101-01
FINISH SCHEDULE ITEM TAG: AS1
- 6 CONCRETE FILLED STEEL PIPE BOLLARDS, PAINTED
COLOUR: BLUE w/ 4" YELLOW STRIPE (SEE DETAIL)
FINISH SCHEDULE ITEM TAG: P9/P14
- 7 INTERNALLY ILLUMINATED INDIVIDUAL LETTERS, SURFACE MOUNTED BY SIGNAGE CONTRACTOR. GENERAL CONTRACTOR TO PROVIDE FINAL ELECTRICAL CONNECTIONS. (SEE ELECTRICAL)
FINISH SCHEDULE ITEM TAG: S2/S3/S5
- 8 NEON 'OPEN' SIGN BY SIGNAGE CONTRACTOR. GENERAL CONTRACTOR TO PROVIDE FINAL ELECTRICAL CONNECTIONS. (SEE ELECTRICAL)
FINISH SCHEDULE ITEM TAG: S4
- 9 SEALED INSULATED GLAZING w/ ANODIZED ALUMINUM FRAMES (SEE WINDOW SCHEDULE)
- 10 ANODIZED ALUMINUM STORE FRONT DOOR w/ CLEAR INSULATED GLAZING (SEE DOOR SCHEDULE)
- 11 ALUMINUM OVERHEAD DOOR w/ GLAZING AND SOLID ANODIZED PANELS. EXHAUST PORTS AT BOTTOM OF DOORS ON NORTH ELEVATION ONLY. (SEE DOOR SCHEDULE)
- 12 EXPOSED FOUNDATION WALL TO BE PARSED
W/R. MEADOWS GEN-KOTE FLEX ST/ OR APPROVED EQUAL
BARRIER-FREE PUSH BUTTON (SEE ELECTRICAL)
- 13 BENT METAL PROTECTION CAP (PAINTED)
AT PERIMETER OF OVERHEAD DOOR (SEE JAMB AND HEADER DETAILS)
COLOUR: 'MR. LUBE BLUE' TO MATCH P9
- 14 EXTERIOR WALL MOUNTED LED LIGHT FIXTURE. (SEE ELECTRICAL)
ENSURE SITE LIGHTING LEVELS DO NOT ADVERSELY AFFECT ADJACENT PROPERTIES
- 15 PREFINISHED AWNING
ALUMINUM COMPOSITE MATERIAL (ACM) PANEL
COLOUR: 'MR. LUBE BLUE' TO MATCH ACM3
PROVIDE PRICE FOR VINYL FABRIC CLADDING OPTION
- 16 PREFINISHED AWNING ACCENT TRIM
ALUMINUM COMPOSITE MATERIAL (ACM) PANEL
COLOUR: 'MR. LUBE YELLOW' TO MATCH ACM2
PROVIDE PRICE FOR VINYL FABRIC CLADDING OPTION
- 17 EXTERIOR H.M. DOOR & FRAME (PAINTED)
COLOUR: 'MR. LUBE SILVER' P10
- 18 SECURITY CAMERA
- 19 HYDRO METER
(SEE ELECTRICAL DRAWINGS)
- 20 GAS METER
(SEE MECHANICAL DRAWINGS)
- 21 ALL ROOF TOP MECHANICAL EQUIPMENT
SHALL BE SCREENED FROM VIEW
- 22

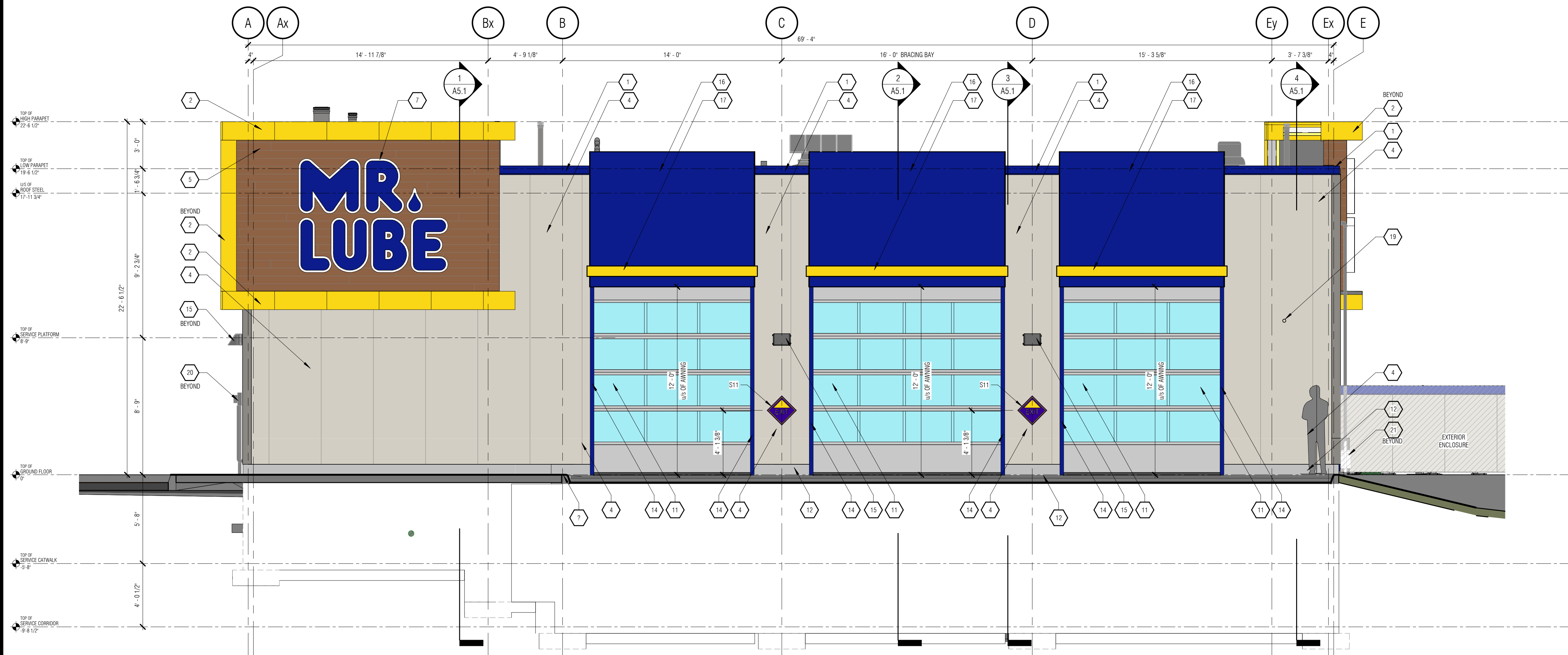
REV	DESCRIPTION	DATE
1	ISSUED FOR S.P.A.	01.22.2021



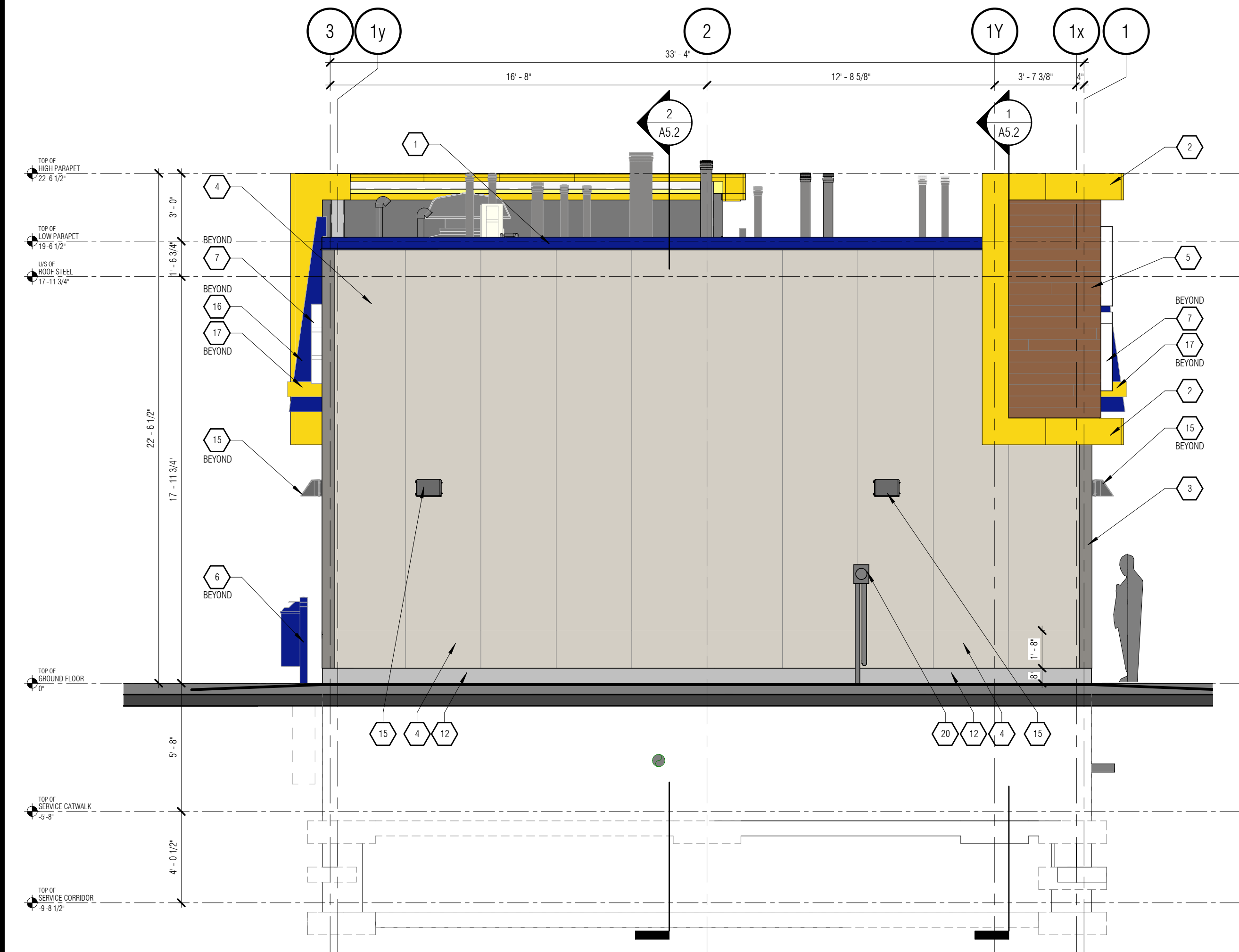
21-108 HAZELDEAN RD.
STITTSTVILLE, ON.

DRAWING:
**NORTH & EAST
EXTERIOR
ELEVATIONS**

DRAWN: R.P.	CHECKED: P.P.	APPROVED: P.P.
DATE (MM.DD.YY): 01.19.21	SCALE: 1/4" = 1'-0"	JOB NUMBER: 21027
DRAWING NUMBER: A4.1	REVISION NUMBER: R1	



1 SOUTH ELEVATION
A4.2 1/4" = 1'-0"



2 WEST ELEVATION
A4.2 1/4" = 1'-0"



4 SOUTH WEST - 3D VIEW
A4.2

EXTERIOR ELEVATION LEGEND

- 00 KEYED NOTE CALL-OUT
- 5 GRAPHIC CALL-OUT (SEE SIGNAGE SCHEDULE)
- XX FINISH CALL-OUT (SEE FINISH SCHEDULE)
- XX SECTION CALL-OUT
- XX BUILDING GRID CALL-OUT
- D1 DOOR CALL-OUT
- W-3 WINDOW CALL-OUT

EXTERIOR ELEVATION NOTES

- ALL DIMENSIONS ON THIS DRAWING HAVE BEEN ROUNDED TO THE NEAREST 1/8" FOR CLARITY.
- THE APPROVED BUILDING ELEVATIONS SHALL FORM THE BASIS FOR THE BUILDING PERMIT APPLICATION.
- ALL EXISTING GRADES ARE TO BE REVIEWED PRIOR TO CONSTRUCTION BY THE GENERAL CONTRACTOR. ALL DISCREPANCIES IN THE EXISTING GRADES ARE TO BE REPORTED TO THE PROJECT MANAGER.
- ALL EXTERIOR SIGNS ARE SUPPLIED AND INSTALLED BY MR. LUBE SIGNAGE COMPANY (SEE GRAPHIC SCHEDULE). GENERAL CONTRACTOR IS RESPONSIBLE TO PROVIDE ALL NECESSARY ELECTRICAL POWER AND DISCONNECT SWITCH TO EACH SIGN AS REQUIRED. GENERAL CONTRACTOR IS RESPONSIBLE TO HOOK UP ELECTRICAL POWER TO EACH SIGN.
- ANY SUBSTANTIVE CHANGE(S) OR MODIFICATIONS TO THE APPROVED BUILDING ELEVATION(S) SHALL REQUIRE A MODIFICATION TO THE APPROVED BUILDING ELEVATION DRAWINGS BY THE DELEGATED SITE PLAN APPROVAL AUTHORITY.
- GENERAL CONTRACTOR IS RESPONSIBLE FOR ALL EXTERIOR PAINT WORK.
- GENERAL CONTRACTOR TO PROVIDE AND INSTALL ALL SCAFFOLDING. SCAFFOLDING DESIGN TO BE STAMPED BY A QUALIFIED ENGINEER TO MEET MINISTRY GUIDELINES.
- BUILDING COLOURS MAY BE SUBJECT TO MINOR ADJUSTMENTS IN TONE AND/OR SHADE.
- ANY PROPOSED SIGNAGE IS FOR ILLUSTRATION PURPOSES AND SUBJECT TO CITY SIGN BY-LAWS.
- GENERAL CONTRACTOR TO PAINT ALL EXPOSED VENT PIPES ON ROOF (COLOUR P17). SEE FINISH SCHEDULE.
- GENERAL CONTRACTOR TO SEAL ALL PENETRATIONS THROUGH WALL TO PREVENT WATER LEAKS.
- ALL EXTERIOR ELECTRICAL OUTLETS TO BE SEALED AND FINISHED IN A PROFESSIONAL MANNER. ANY CRACKS OR POORLY INSTALLED OUTLETS ARE SUBJECT TO REINSTALLATION AND ALL COSTS ASSOCIATED WILL BE PAID BY THE GENERAL CONTRACTOR.
- PROVIDE SOFT WEATHER TIGHT JOINTS AT ALL ADJACENT MATERIALS AND SURFACES AS PER MANUFACTURERS SPECIFICATIONS.
- EXTERIOR CLADDING SHALL BE APPLIED AS PER THE MANUFACTURERS RECOMMENDATIONS AND DETAILS.

EXTERIOR ELEVATION KEYED NOTES

- 1 PREFINISHED METAL GAP FLASHING
COLOUR: MR. LUBE BLUE
FINISH SCHEDULE ITEM TAG: P9
- 2 PREFINISHED ALUMINUM COMPOSITE MATERIAL (ACM) PANEL
COLOUR: MR. LUBE YELLOW
FINISH SCHEDULE ITEM TAG: ACM2
- 3 PREFINISHED ARCHITECTURAL INSULATED WALL PANEL
COLOUR: MR. LUBE SLATE
FINISH SCHEDULE ITEM TAG: IMP2
- 4 PREFINISHED ARCHITECTURAL INSULATED WALL PANEL
COLOUR: MR. LUBE SILVER
FINISH SCHEDULE ITEM TAG: IMP1
- 5 PREFINISHED HORIZONTAL ALUMINUM SIDING
MANUFACTURER: DZAL (6" V-GROOVE)
COLOUR: CLUMARU - VAREGATED LIGHT 101-01
FINISH SCHEDULE ITEM TAG: AS1
- 6 CONCRETE FILLED STEEL PIPE BOLLARDS, PAINTED
COLOUR: BLUE w/ 4" YELLOW STRIPS (SEE DETAIL)
FINISH SCHEDULE ITEM TAG: P9/P14
- 7 INTERNALLY ILLUMINATED INDIVIDUAL LETTERS, SURFACE MOUNTED BY SIGNAGE CONTRACTOR. GENERAL CONTRACTOR TO PROVIDE FINAL ELECTRICAL CONNECTIONS (SEE ELECTRICAL).
FINISH SCHEDULE ITEM TAG: SC2/SC5
- 8 NEON "OPEN" SIGN BY SIGNAGE CONTRACTOR. GENERAL CONTRACTOR TO PROVIDE FINAL ELECTRICAL CONNECTIONS (SEE ELECTRICAL).
FINISH SCHEDULE ITEM TAG: SC4
- 9 SEALED INSULATED GLAZING w/ ANODIZED ALUMINUM FRAMES (SEE WINDOW SCHEDULE)
- 10 ANODIZED ALUMINUM STORE FRONT DOOR w/ CLEAR INSULATED GLAZING (SEE DOOR SCHEDULE)
- 11 ALUMINUM OVERHEAD DOOR w/ GLAZING AND SOLID ANODIZED PANELS. EXHAUST PORTS AT BOTTOM OF DOORS ON NORTH ELEVATION ONLY. (SEE DOOR SCHEDULE)
- 12 EXPOSED FOUNDATION WALL TO BE PARGED
W.R. MEADOWS CEM-KOTE FLEX ST OR APPROVED EQUAL
BARRIER-FREE PUSH BUTTON (SEE ELECTRICAL)
- 13 BENT METAL PROTECTION CAP (PAINTED)
AT PERIMETER OF OVERHEAD DOOR (SEE JAMB AND HEADER DETAILS)
COLOUR: MR. LUBE BLUE TO MATCH P9
- 14 EXTERIOR WALL MOUNTED LED LIGHT FIXTURE (SEE ELECTRICAL)
ENSURE SITE LIGHTING LEVELS DO NOT ADVERSELY AFFECT ADJACENT PROPERTIES
- 15 PREFINISHED AWNING
ALUMINUM COMPOSITE MATERIAL (ACM) PANEL
COLOUR: MR. LUBE BLUE TO MATCH ACM 3
PROVIDE PRICE FOR VINYL FABRIC CLADDING OPTION
- 16 PREFINISHED AWNING ACCENT TRIM
ALUMINUM COMPOSITE MATERIAL (ACM) PANEL
COLOUR: MR. LUBE YELLOW TO MATCH ACM2
PROVIDE PRICE FOR VINYL FABRIC CLADDING OPTION
- 17 EXTERIOR H.M. DOOR & FRAME (PAINTED)
COLOUR: MR. LUBE SILVER P10
- 18 SECURITY CAMERA
- 19 HYDRO METER (SEE ELECTRICAL DRAWINGS)
- 20 GAS METER (SEE MECHANICAL DRAWINGS)
- 21 ALL ROOF TOP MECHANICAL EQUIPMENT SHALL BE SCREENED FROM VIEW

1	ISSUED FOR S.P.A.	01.22.2021
REV	DESCRIPTION	DATE
R-##	- REVISION	
S-##	- ISSUED	
A-##	- APPROVAL	

Greystone

Kitchener
100 Conestoga College Blvd, Unit 1116
Kitchener, Ontario N2P 2H6
(519) 896-1010 ext.100
info@greystoneinc.ca
www.greystoneinc.ca

Toronto
2999 Lakeshore Blvd West
Toronto, Ontario M8V 1J8
(416) 901-6446

PROJECT FOR:

MR. LUBE
MR. LUBE CANADA LP

PROJECT:

NEW BUILD - STITTVILLE

21-108 HAZELDEAN RD.
STITTVILLE, ON.

DRAWING:

**SOUTH & WEST
EXTERIOR
ELEVATIONS**

DRAWN: R.P.	CHECKED: P.P.	APPROVED: P.P.
DATE (MM.DD.YY): 01.19.21	SCALE: 1/4" = 1'-0"	JOB NUMBER: 21027
DRAWING NUMBER: A4.2	REVISION NUMBER: R1	