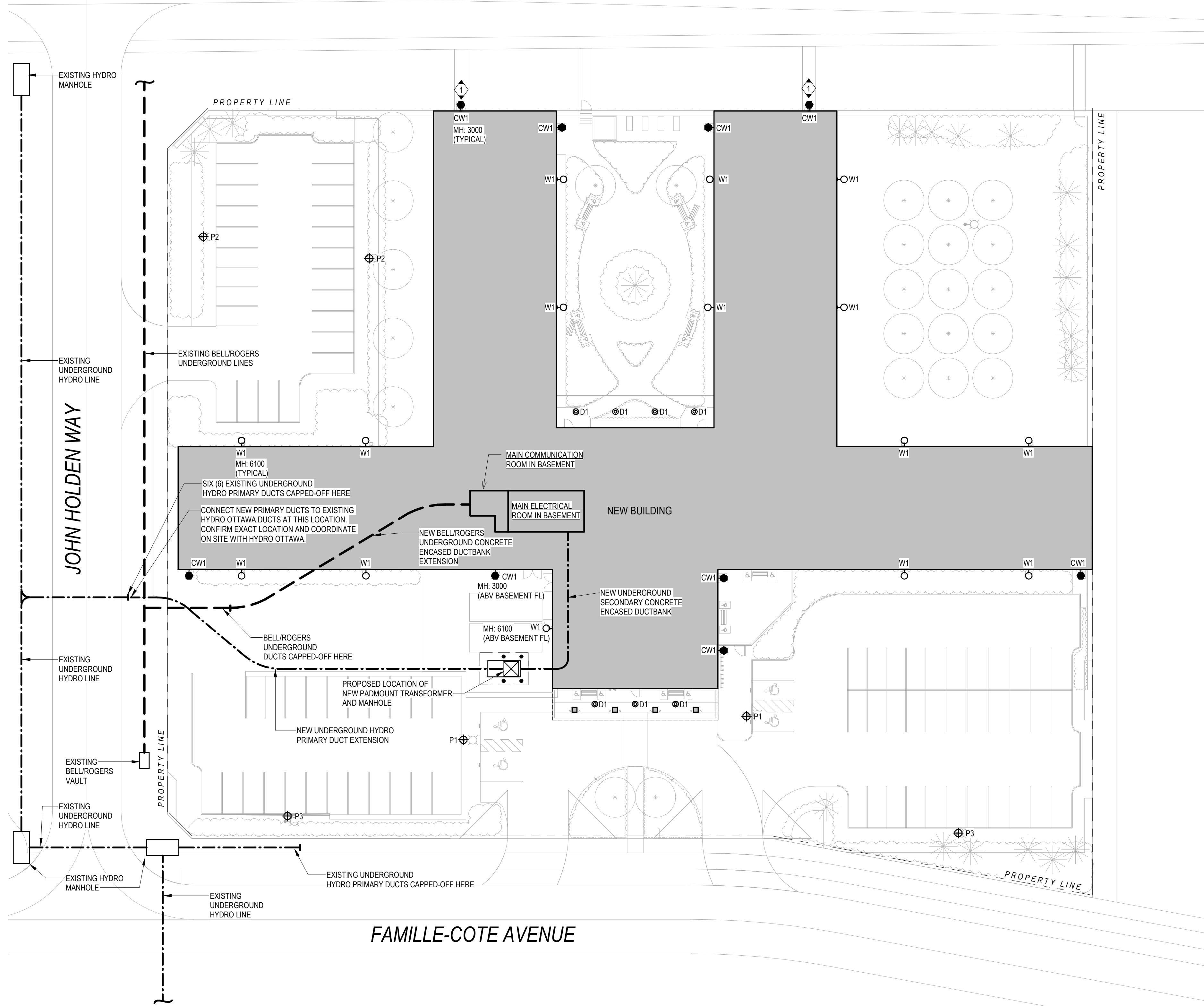


CHAMPLAIN STREET

**DRAWING NOTES**

⚡ LIGHTING AT THIS DOOR SHALL BE CONTROLLED IN SUCH A MANNER THAT THE FIXTURE IS ONLY ILLUMINATED IF THERE IS A LOSS OF UTILITY POWER OR ACTIVATED BY THE FIRE ALARM SYSTEM.



**1 ELECTRICAL SITE PLAN**  
1:300

**Prints issued to**

Particulars	No.	Date	By
SITE PLAN APPROVAL 1	1	03 JUL 20	DB
SITE PLAN APPROVAL 2	2	17 DEC 20	DB

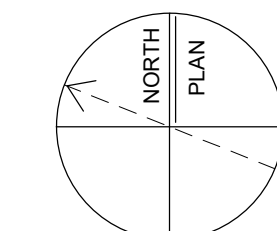
**Revisions to drawing**

All previous issues of this drawing are superseded.

**exp Services Inc.**  
1266 South Service Road, Suite C1-1  
Stoney Creek, ON L8E 5R6  
CANADA t. +1.905.526.6969  
www.exp.com



• BUILDINGS • EARTH & ENVIRONMENT • ENERGY •  
• INDUSTRIAL • INFRASTRUCTURE • SUSTAINABILITY



Project title  
**REVERA OTTAWA**  
850 CHAMPLAIN ROAD

Project number	Date issued	Scale
GR8-00020059-00	<b>AS NOTED</b>	<b>AS NOTED</b>
	Drawn by	Date
	--	<b>06/05/20</b>

Sheet title	Drawing no.
<b>ELECTRICAL SITE PLAN</b>	<b>E1-01</b>

**Prints issued to**

Particulars	No.	Date	By

Particulars No. Date By

**Revisions to drawing**

All previous issues of this drawing are superseded.

exp Services Inc.  
 1266 South Service Road, Suite C1-1  
 Stony Creek, ON L8E 5R8  
 CANADA t. +1-905-526-9389  
[www.exp.com](http://www.exp.com)



• BUILDINGS • EARTH & ENVIRONMENT • ENERGY •  
 • INDUSTRIAL • INFRASTRUCTURE • SUSTAINABILITY

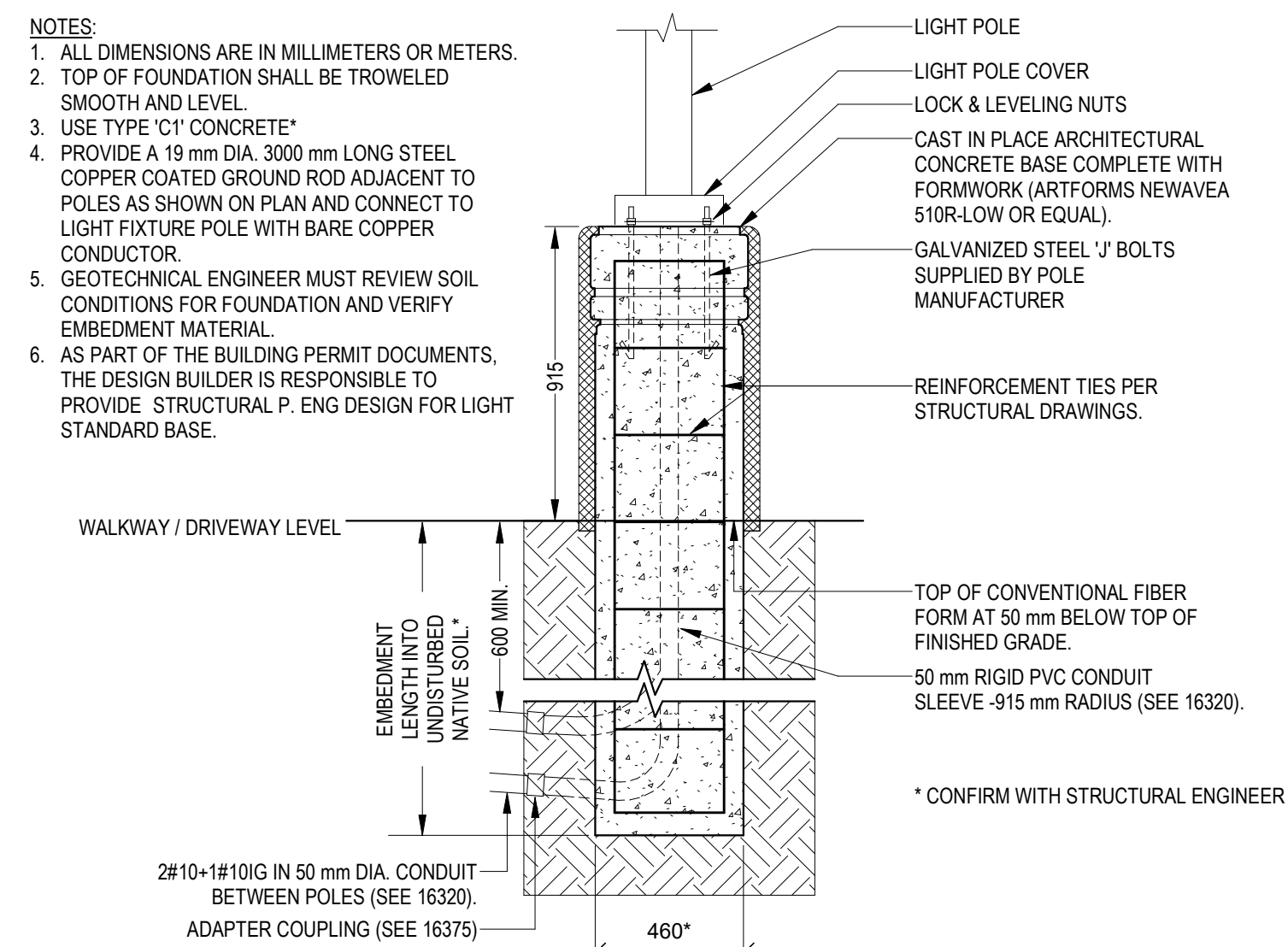


Project title

**REVERA OTTAWA**  
**850 CHAMPLAIN ROAD**

Project number	Date issued	Scale
<b>GR8-00020059-00</b>	<b>AS NOTED</b>	<b>AS NOTED</b>
Drawn by	Date	
<b>Author</b>	<b>06/05/20</b>	

Sheet title	Drawing no.
<b>ELECTRICAL SITE DETAILS</b>	<b>E1-02</b>



- NOTES:**
1. ALL DIMENSIONS ARE IN MILLIMETERS OR METERS.
  2. TOP OF FOUNDATION SHALL BE TROWELED SMOOTH AND LEVEL.
  3. USE TYPE 'C1' CONCRETE\*
  4. PROVIDE A 19 mm DIA. 3000 mm LONG STEEL COPPER COATED GROUND ROD ADJACENT TO POLES AS SHOWN ON PLAN AND CONNECT TO LIGHT FIXTURE POLE WITH BARE COPPER CONDUCTOR.
  5. GEOTECHNICAL ENGINEER MUST REVIEW SOIL CONDITIONS FOR FOUNDATION AND VERIFY EMBEDMENT MATERIAL.
  6. AS PART OF THE BUILDING PERMIT DOCUMENTS, THE DESIGN BUILDER IS RESPONSIBLE TO PROVIDE STRUCTURAL P. ENG DESIGN FOR LIGHT STANDARD BASE.

**1 POLE BASE DETAIL**  
 1 : 20

### DECLARATION OF COMPLIANCE

THE LIGHTING ZONE CLASSIFICATION APPLICABLE TO THIS SITE IS 'L22' AS DESCRIBED BY THE IES/DARK SKY ASSOCIATION MODEL LIGHTING ORDINANCE PART II.

THE LIGHT POLLUTION HAS BEEN LIMITED TO THE ALLOWABLE VALUES AS DESCRIBED IN THE MODEL LIGHTING ORDINANCE. LIGHT FIXTURES DO NOT DIRECT LIGHT ABOVE 90 DEGREES (HORIZONTAL).

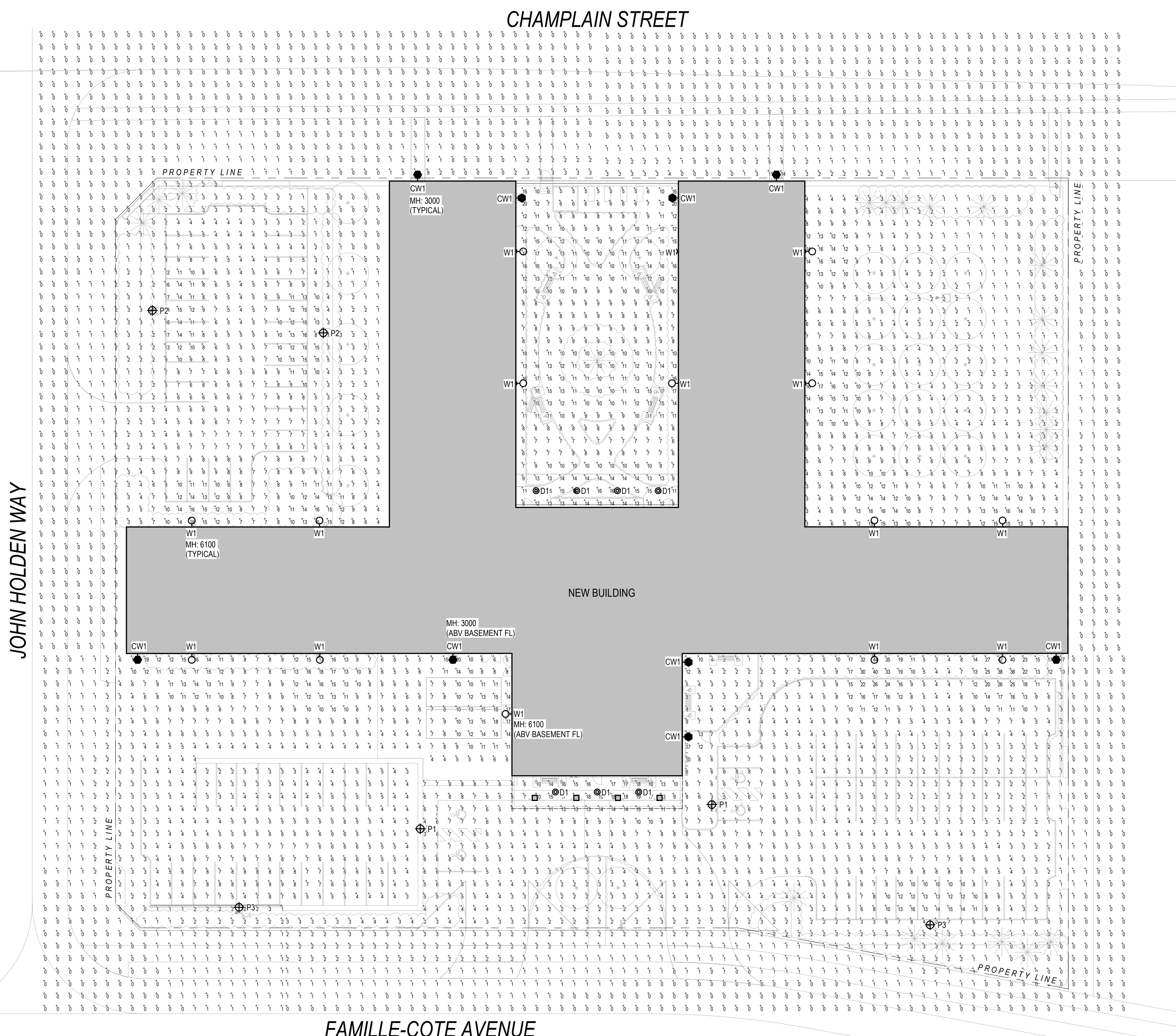
THE MAXIMUM LIGHT LEVEL AT THE PROPERTY LINE IS 2 LUX.

THE SITE LIGHTING HAS BEEN DESIGNED TO CONFORM TO THE FOLLOWING STANDARDS AND/OR GUIDELINES:  
 1. CITY OF OTTAWA SITE LIGHTING GUIDELINES  
 2. IES RP-33-14 LIGHTING FOR PARKING FACILITIES (UNCOVERED).  
 3. IES RP-33-14 LIGHTING FOR EXTERIOR ENVIRONMENTS

LIGHTING CONTROL WILL BE PROVIDED IN ACCORDANCE WITH THE ONTARIO BUILDING CODE SUPPLEMENTAL BULLETIN 10 (SB-10) AND ASHRAE 90.1.

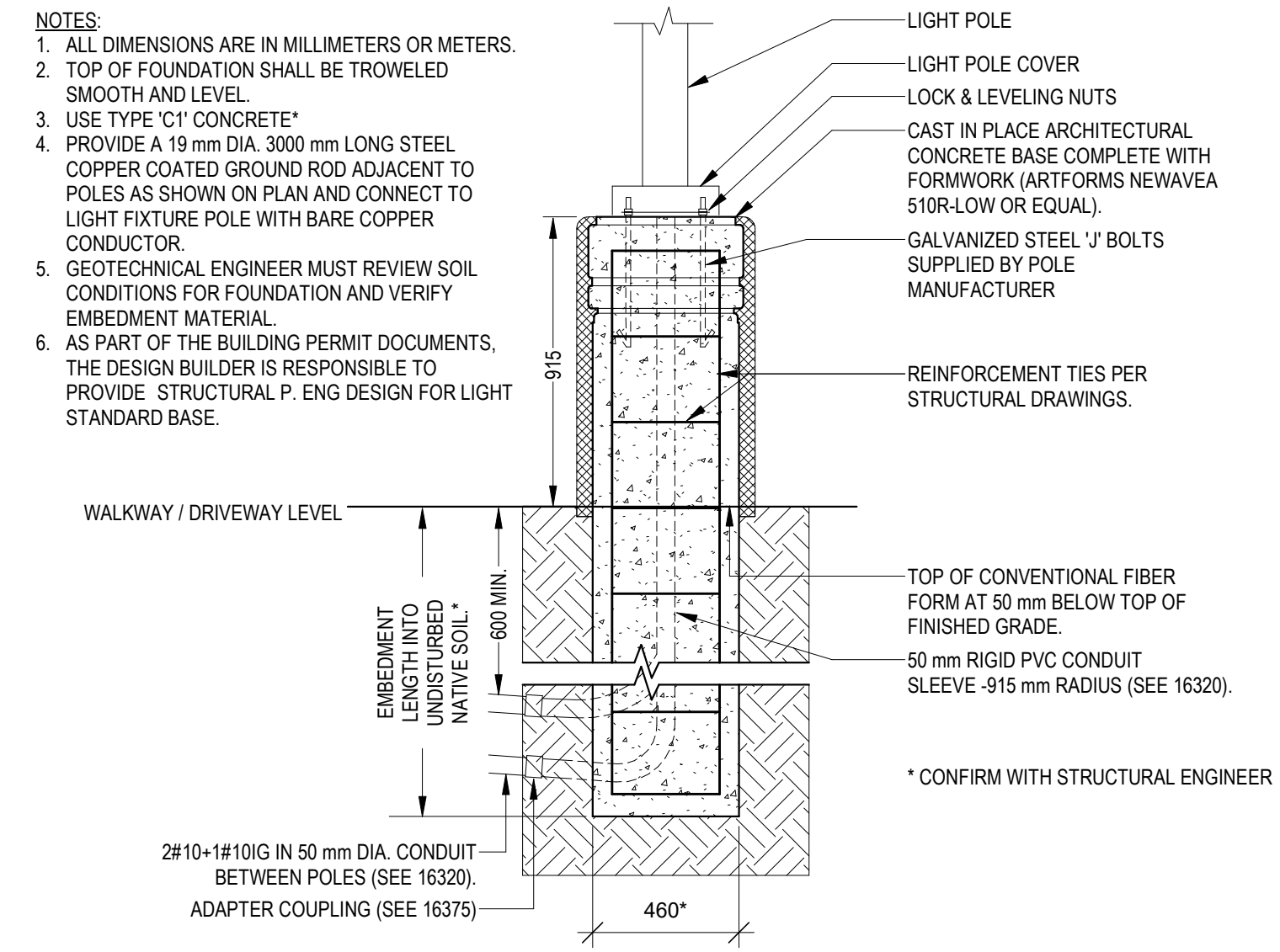
### GENERAL NOTES

- A. PHOTOMETRIC UNITS ARE IN LUX. 1 LUX = 0.929 FOOT CANDLES.
- B. REFER TO DRAWING E1-02 FOR STANDARD POLE BASE DETAIL.



Luminaire Schedule			
Label	Description	Lum. Watts	Lum. Lumens
CW1	WAC WVS-W6607	17	849
D1	HALO SLD405830WH	12	750
P1	SIGNIFY MPTC-T0W6LEDK-G2-LES	73	6214
P2	SIGNIFY MPTC-36W2LEDK-G2-LE3-HS	37	3000
P3	SIGNIFY MPTC-55W2LEDK-G2-LE4-HS	56	3635
W1	LEOTEK E51-24H-MV-WV-FT-XXX-350	28	3146

Calculation Summary						
Label	CalcType	Units	Avg	Max	Min	Avg/Min
EXITS	Illuminance	Lux	N.A.	21	12	N.A.
PROPERTY LINE	Illuminance	Lux	1	3	0	N.A.



- NOTES:
- ALL DIMENSIONS ARE IN MILLIMETERS OR METERS.
  - TOP OF FOUNDATION SHALL BE TROWELED SMOOTH AND LEVEL.
  - USE TYPE 'C1' CONCRETE.
  - PROVIDE A 19 mm DIA. 3000 mm LONG STEEL COPPER COATED GROUND ROD ADJACENT TO POLES AS SHOWN ON PLAN AND CONNECT TO LIGHT FIXTURE POLE WITH BARE COPPER CONDUCTOR.
  - GEOTECHNICAL ENGINEER MUST REVIEW SOIL CONDITIONS FOR FOUNDATION AND VERIFY EMBEDMENT MATERIAL.
  - AS PART OF THE BUILDING PERMIT DOCUMENTS, THE DESIGN BUILDER IS RESPONSIBLE TO PROVIDE STRUCTURAL P. ENG DESIGN FOR LIGHT STANDARD BASE.

**1 SITE LIGHTING PHOTOMETRIC PLAN**  
1:300

**2 POLE BASE DETAIL**  
1:20

#### Prints issued to

Particulars	No.	Date	By
SITE PLAN APPROVAL 1	1	03 JUL 20	DB
SITE PLAN APPROVAL 2	2	17 DEC 20	DB

#### Revisions to drawing

All previous issues of this drawing are superseded.

**exp Services Inc.**  
 1266 South Service Road, Suite C1-1  
 Stony Creek, ON L9E 5R6  
 CANADA t. +1-905-526-6989

www.exp.com

- BUILDINGS • EARTH & ENVIRONMENT • ENERGY •
- INDUSTRIAL • INFRASTRUCTURE • SUSTAINABILITY

Project title  
**REVERA OTTAWA**  
 850 CHAMPLAIN ROAD

Project number	Date issued	Scale
GR8-00020059-00	AS NOTED	AS NOTED
Drawn by	Date	
Author	06/05/20	

Sheet title  
**SITE LIGHTING PHOTOMETRIC PLAN**  
 Drawing no.  
**E1-03**