

PLANT LIST - 244 Fountain Place

QTY.	KEY	BOTANICAL NAME	COMMON NAME	SIZE	REMARKS
DECIDUOUS TREES - REFER TO DETAIL 1/L103					
2	AC	<i>Amelanchier canadensis</i>	Serviceberry	2500mm ht.	W.B.; Clump Form; Plant @ 4000mm o/c
CONIFEROUS TREES - REFER TO DETAIL 2/L103					
13	TO	<i>Thuja occidentalis</i> 'Degroot's Spire'	Degroot's Spire Cedar	2000mm ht.	W.B.; Plant at 1000mm o/c
DECIDUOUS SHRUBS - REFER TO DETAIL 3/L103 & 4/L103					
5	DL	<i>Diervilla lonicera</i>	Bush Honeysuckle	2 Gal.	Potted; Plant at 1000mm o/c
5	RA	<i>Rhus aromatica</i>	Fragrant Sumac	3 Gal.	Potted; Plant at 1500mm o/c
3	SA	<i>Symphoricarpos albus</i>	Snowberry	1 Gal.	Potted; Plant at 1000mm o/c
PERENNIALS / ORNAMENTAL GRASSES - REFER TO DETAIL 5/L103					
6	CA	<i>Calamagrostis acutiflora</i> 'Overdam'	Overdam Feather Reed Grass	1 Gal.	Potted; Plant at 750mm o/c
21	HO	<i>Hosta</i> 'Blue Ivory'	Blue Ivory Hosta	1 Gal.	Potted; Plant at 500mm o/c
13	HE	<i>Hemerocallis</i> 'Gentle Shepherd'	Gentle Shepherd Daylily	1 Gal.	Potted; Plant at 500mm o/c

PLANT LIST - Besserer Park

QTY.	KEY	BOTANICAL NAME	COMMON NAME	SIZE	REMARKS
DECIDUOUS TREES - REFER TO DETAIL 1/L103					
1	AR	<i>Acer rubrum</i>	Red Maple	60mm cal.	W.B.
2	AS	<i>Acer saccharum</i>	Sugar Maple	60mm cal.	W.B.
2	CO	<i>Celtis occidentalis</i>	Common Hackberry	60mm cal.	W.B.
5	QR	<i>Quercus rubra</i>	Red Oak	60mm cal.	W.B.
1	UV	<i>Ulmus x 'Vanguard'</i>	Vanguard	60mm cal.	W.B.
DECIDUOUS SHRUBS - REFER TO DETAILS 3/L103 & 4/L103					
4	AL	<i>Amelanchier laevis</i>	Allegheny Serviceberry	2 Gal.	Potted
14	CS	<i>Cornus sericea</i>	Red Osier Dogwood	1 Gal.	Potted; Plant at 2500mm o/c
10	PO	<i>Physocarpus opulifolius</i>	Common Ninebark	1 Gal.	Potted; Plant at 1800mm o/c
19	SA	<i>Symphoricarpos albus</i>	Snowberry	1 Gal.	Potted; Plant at 1000mm o/c
19	VA	<i>Viburnum acerifolium</i>	Mapleleaf Viburnum	1 Gal.	Potted; Plant at 1000mm o/c
REFORESTATION BEDS - REFER TO DETAILS 9/L103 & 10/L103					
Deciduous Trees					
12	ARU	<i>Acer rubrum</i>	Red Maple	1000mm ht.	Potted; Plant at 2000mm o/c
10	ASA	<i>Acer saccharum</i>	Sugar Maple	1000mm ht.	Potted; Plant at 2000mm o/c
7	QRU	<i>Quercus rubra</i>	Red Oak	1000mm ht.	Potted; Plant at 2000mm o/c
7	TAM	<i>Tilia americana</i>	Baswood	1000mm ht.	Potted; Plant at 2000mm o/c
Coniferous Trees					
12	TOC	<i>Thuja occidentalis</i>	Eastern White Cedar	400mm ht.	Potted; Plant at 2000mm o/c

LANDSCAPE NOTES

- REFER TO TREE CONSERVATION REPORT INCLUDING TREE PRESERVATION PLAN FOR INFORMATION REGARDING TREE REMOVAL.
- REFER TO "GRADING PLAN" FOR PROPOSED GRADING.
- REFER TO "SITE SERVICING PLAN" FOR LOCATION AND DETAILS OF PROPOSED UNDERGROUND SERVICES.
- 800 SHALL BE KENTUCKY BLUEGRASS SOD INSTALLED OVER 135mm OF TOPSOIL. SOD SHALL BE INSTALLED THROUGHOUT WITHIN LIMIT OF WORK AND IN ALL DISTURBED AREAS OUTSIDE THE LIMIT OF WORK. SOD SHALL BE INSTALLED AS PER OPSB 803.
- CONTRACTOR TO LOCATE AND STAKE ALL UTILITIES PRIOR TO ANY WORK ON THE SITE. DO NOT PLANT DIRECTLY ABOVE UNDERGROUND UTILITIES. REPORT ANY DISCREPANCIES TO THE LANDSCAPE ARCHITECT FOR DIRECTION.
- MAINTAIN A MINIMUM CLEARANCE OF 2.0m BETWEEN ALL UNDERGROUND UTILITIES AND PROPOSED TREES.
- NO TREES SHALL BE PLANTED UNDER OVERHEAD WIRES.
- THE LANDSCAPE ARCHITECT MAY ADJUST THE LOCATION OF TREES PRIOR TO PLANTING TO MINIMIZE CONFLICTS WITH UTILITIES, DRIVEWAYS AND INTERSECTION VISIBILITY.
- CONTRACTOR SHALL SUPPLY ALL MATERIALS IN QUANTITIES SUFFICIENT TO COMPLETE WORK SHOWN ON THESE DRAWINGS. ANY DISCREPANCIES SHALL BE REPORTED TO THE LANDSCAPE ARCHITECT FOR DIRECTION.
- DO NOT MAKE SUBSTITUTIONS OF MATERIALS, PRODUCTS OR QUANTITIES WITHOUT PRIOR WRITTEN PERMISSION OF THE LANDSCAPE ARCHITECT.
- UPON THE COMPLETION OF WORK EACH DAY, REMOVE ALL DEBRIS, GARBAGE AND SURPLUS MATERIALS FROM THE SITE. KEEP THE SITE CLEAN AND USEABLE AT ALL TIMES.
- ALL WORKMANSHIP AND MATERIALS (INCLUDING PLANTS) AT 244 FOUNTAIN PLACE TO BE GUARANTEED FOR ONE FULL YEAR FOLLOWING FINAL ACCEPTANCE OF THE PROJECT. TREES PLANTED IN BESSERER PARK TO BE GUARANTEED FOR TWO FULL YEARS FOLLOWING FINAL ACCEPTANCE OF THE PROJECT.
- THE CONTRACTOR SHALL REMOVE ALL T-BAR AND WOODEN TREE STAKES PRIOR TO ASSUMPTION BY THE OWNER.
- AT THE TIME OF INSPECTION FOR ACCEPTANCE ALL TREE PITS SHALL BE CULTIVATED, FREE OR WEEDS, LEAVES, BROKEN BRANCHES AND DEBRIS.



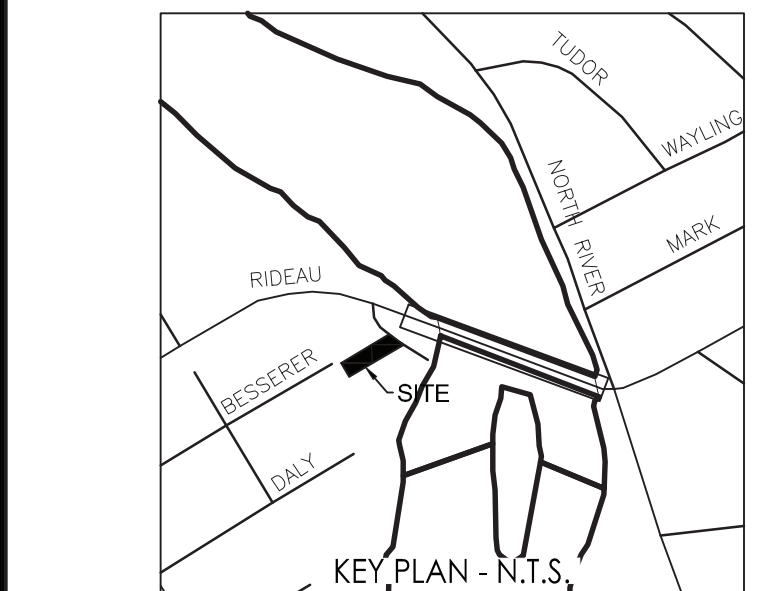
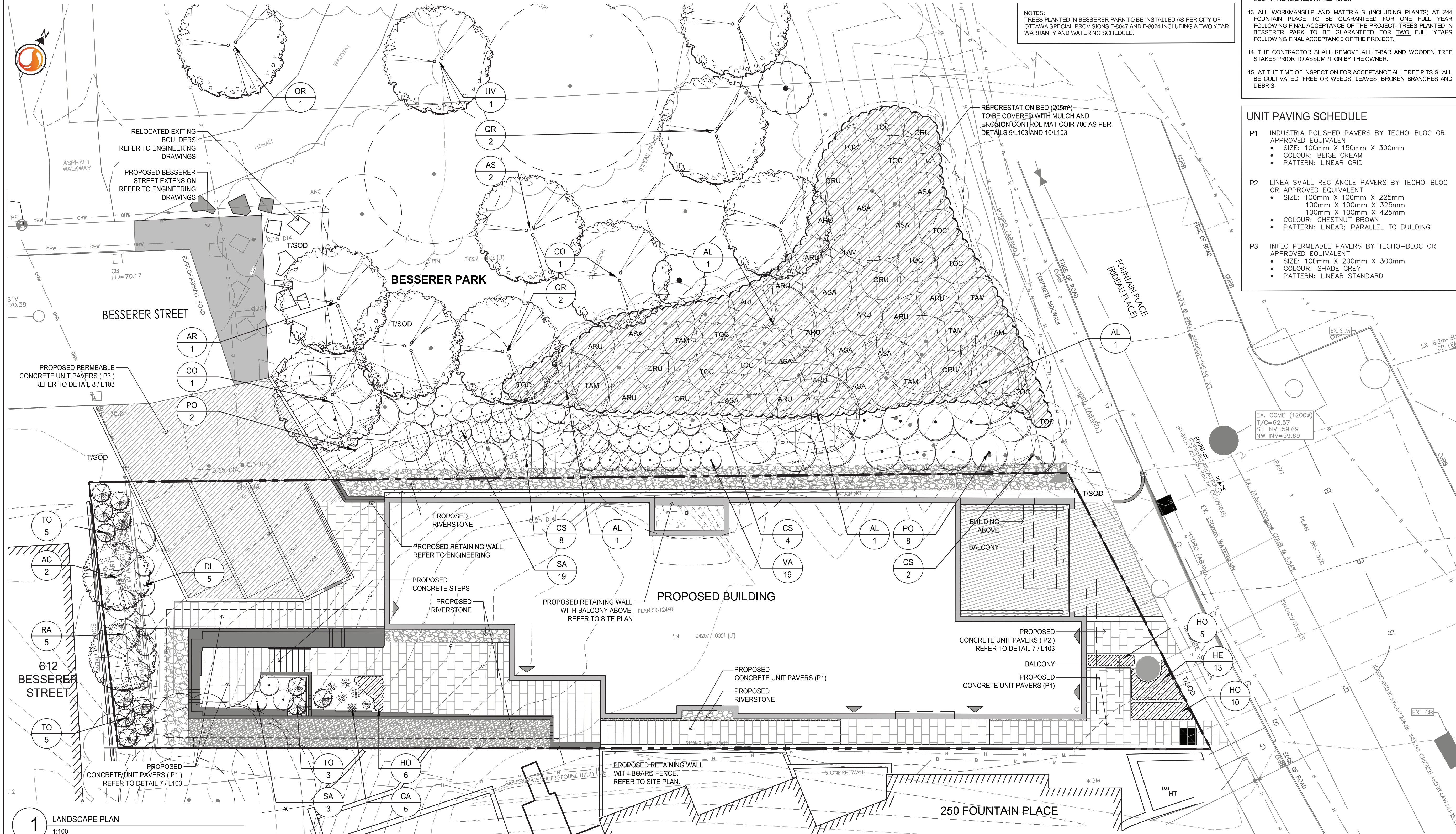
Stantec Consulting Ltd.
400 - 1331 Clyde Avenue
Ottawa ON
Tel. 613.722.4420
www.stantec.com

Legend

- EXISTING TREE
- EXISTING BUTTERNUT TREE
- EXISTING WOODED AREA
- CRITICAL ROOT ZONE
- PROPOSED DECIDUOUS TREE
- PROPOSED CONIFEROUS TREE
- PROPOSED PERENNIALS AND ORNAMENTAL GRASSES
- PROPOSED REFORESTATION BED
- PROPOSED PLANTING BED
- PROPOSED UNIT PAVERS REFER TO DETAIL 7/L103
- PROPOSED CONCRETE
- PROPOSED RIVERSTONE REFER TO DETAIL 6/L103
- TOPSOIL AND SOD
- PROPOSED BOARD ON BOARD WOODEN FENCE
- PROPERTY LINE

UNIT PAVING SCHEDULE

- P1 INDUSTRIA POLISHED PAVERS BY TECO-BLOC OR APPROVED EQUIVALENT**
- SIZE: 100mm X 150mm X 300mm
 - COLOR: BEIGE CREAM
 - PATTERN: LINEAR GRID
- P2 LINEA SMALL RECTANGLE PAVERS BY TECO-BLOC OR APPROVED EQUIVALENT**
- SIZE: 100mm X 100mm X 225mm
 - 100mm X 100mm X 325mm
 - 100mm X 100mm X 425mm
 - COLOR: CHESTNUT BROWN
 - PATTERN: LINEAR; PARALLEL TO BUILDING
- P3 INFLO PERMEABLE PAVERS BY TECO-BLOC OR APPROVED EQUIVALENT**
- SIZE: 100mm X 200mm X 300mm
 - COLOR: SHADE GREY
 - PATTERN: LINEAR STANDARD



6	REVISED BASED ON CITY COMMENTS	IL	IL	20.12.16
4	REVISED SITE PLAN	GM	IL	19.10.11
3	REVISED SITE PLAN	LZ	IL	18.10.26
2	REVISED SITE PLAN	IL	IL	17.01.23
1	ISSUED TO SITE PLAN CONTROL APPROVAL	BD	IL	16.10.19

Revision	By	Appd.	YY.MM.DD
File Name: 160401234-LB	BD	IL	IL
	Dwn.	Chkd.	Dgn.
			YY.MM.DD



Client/Project
TC UNITED GROUP

244 FOUNTAIN PLACE

OTTAWA, ON

Title
LANDSCAPE PLAN

Project No. 160401234	Scale 1:100	Sheet 1 of 2	Revision 6
--------------------------	----------------	-----------------	---------------

W:\active\160401234_244 Fountain Place\design\drawing\160401234-LA.dwg
2020/12/16 9:13 PM By: L. Lalonde, lalonde

1 LANDSCAPE PLAN
1:100

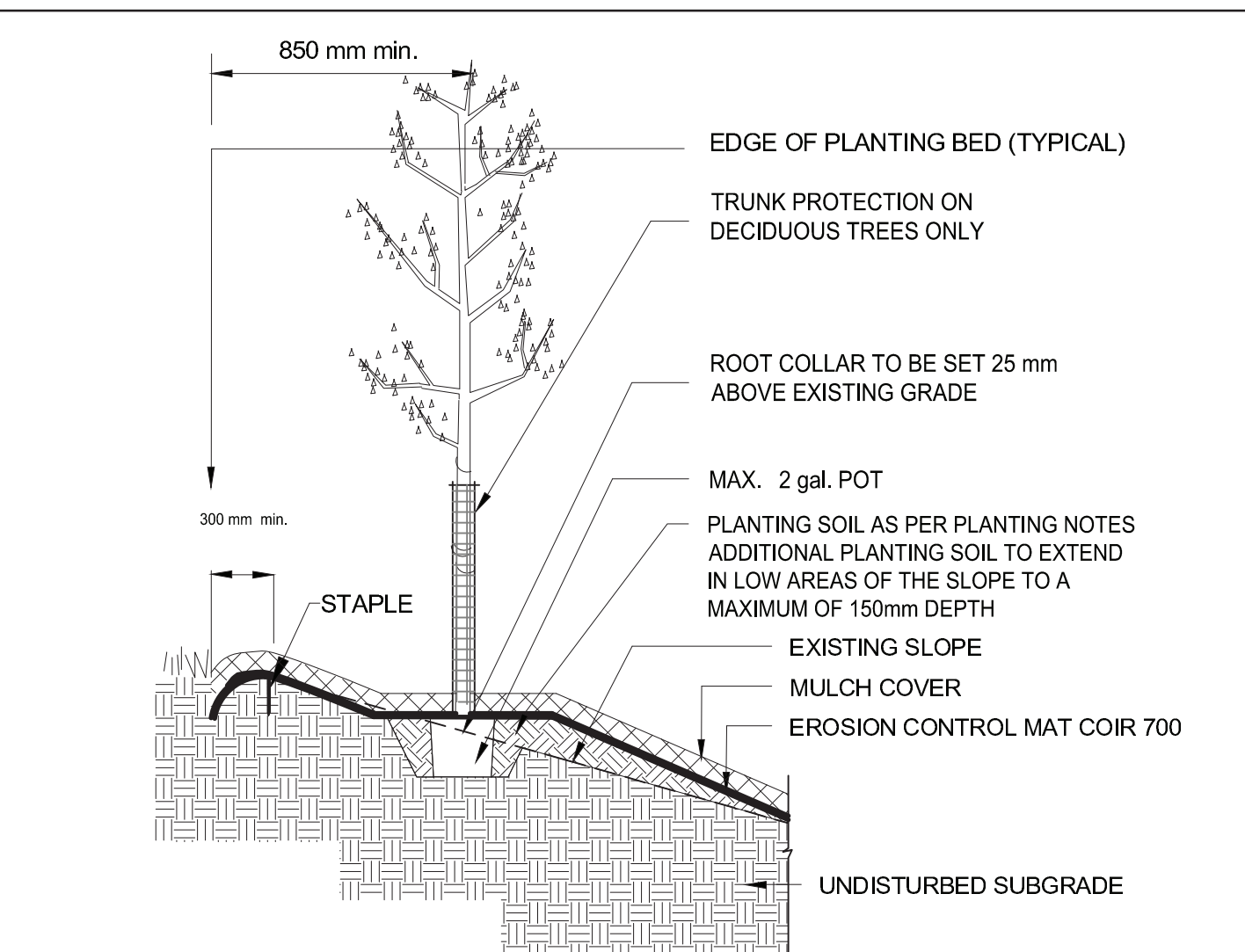
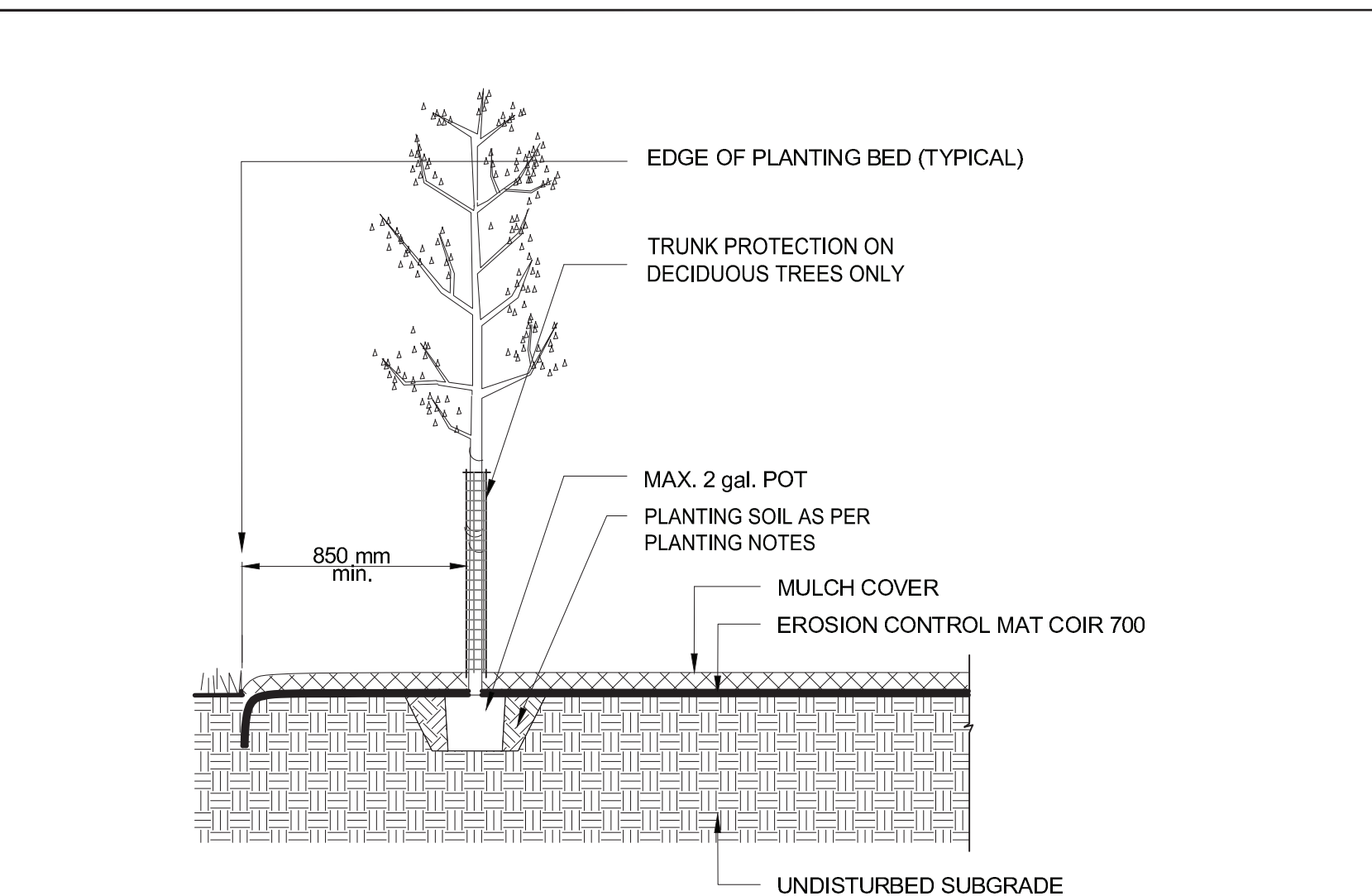
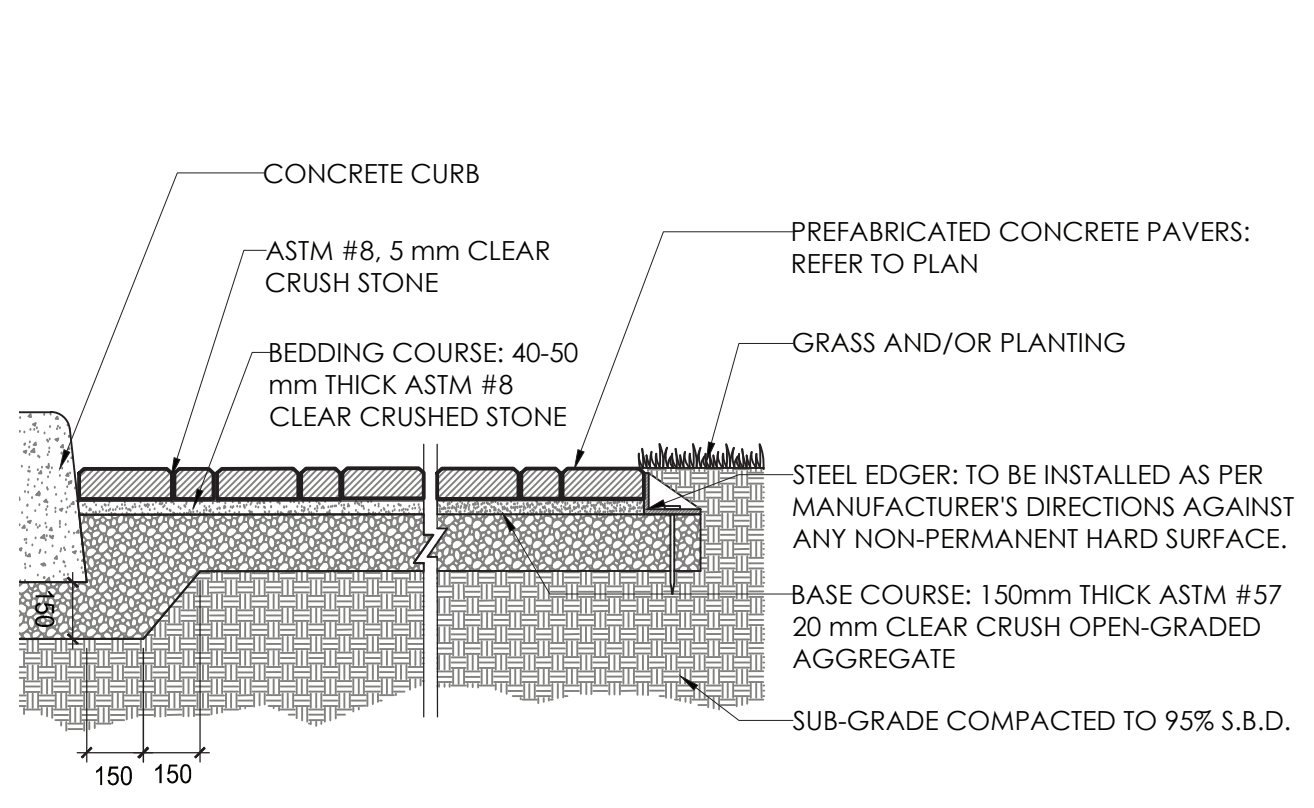
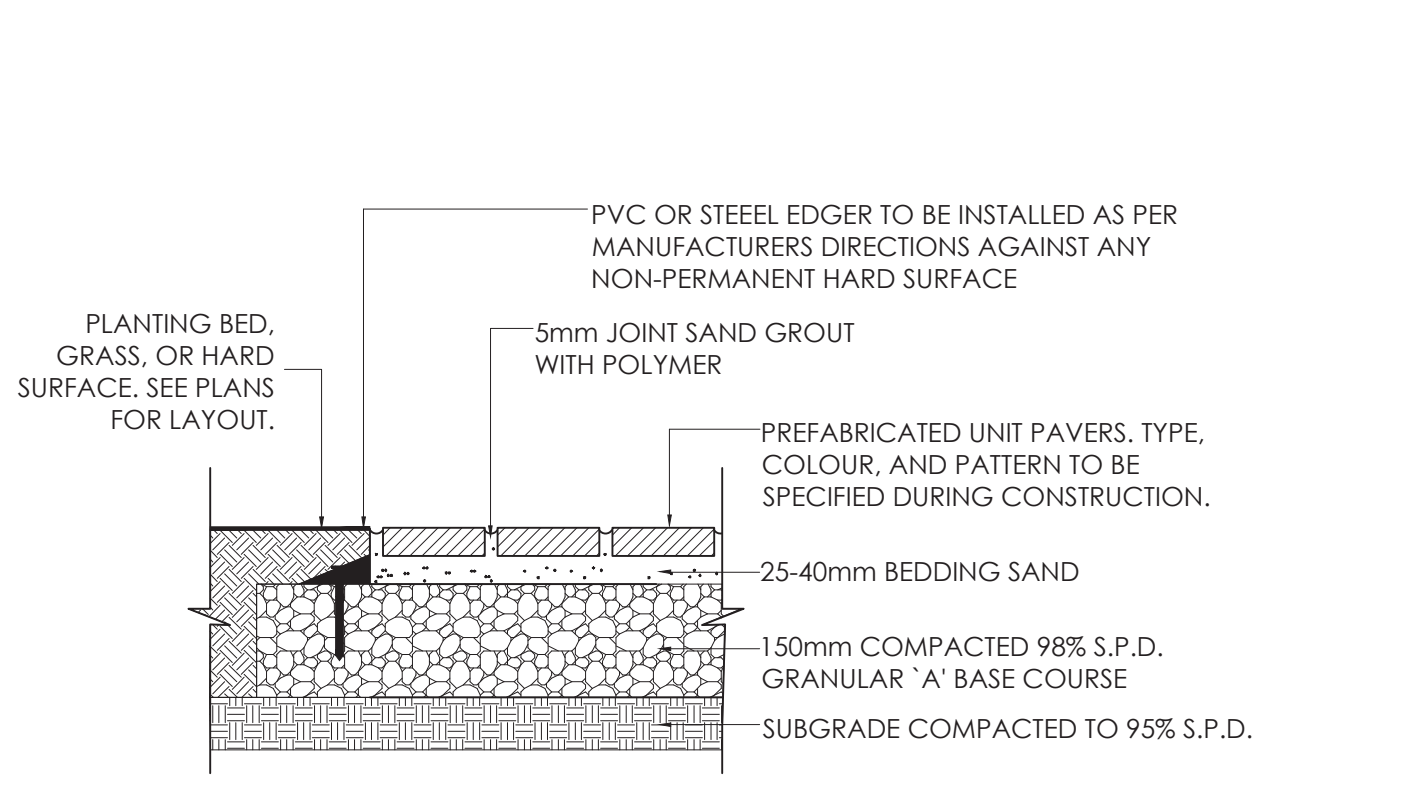
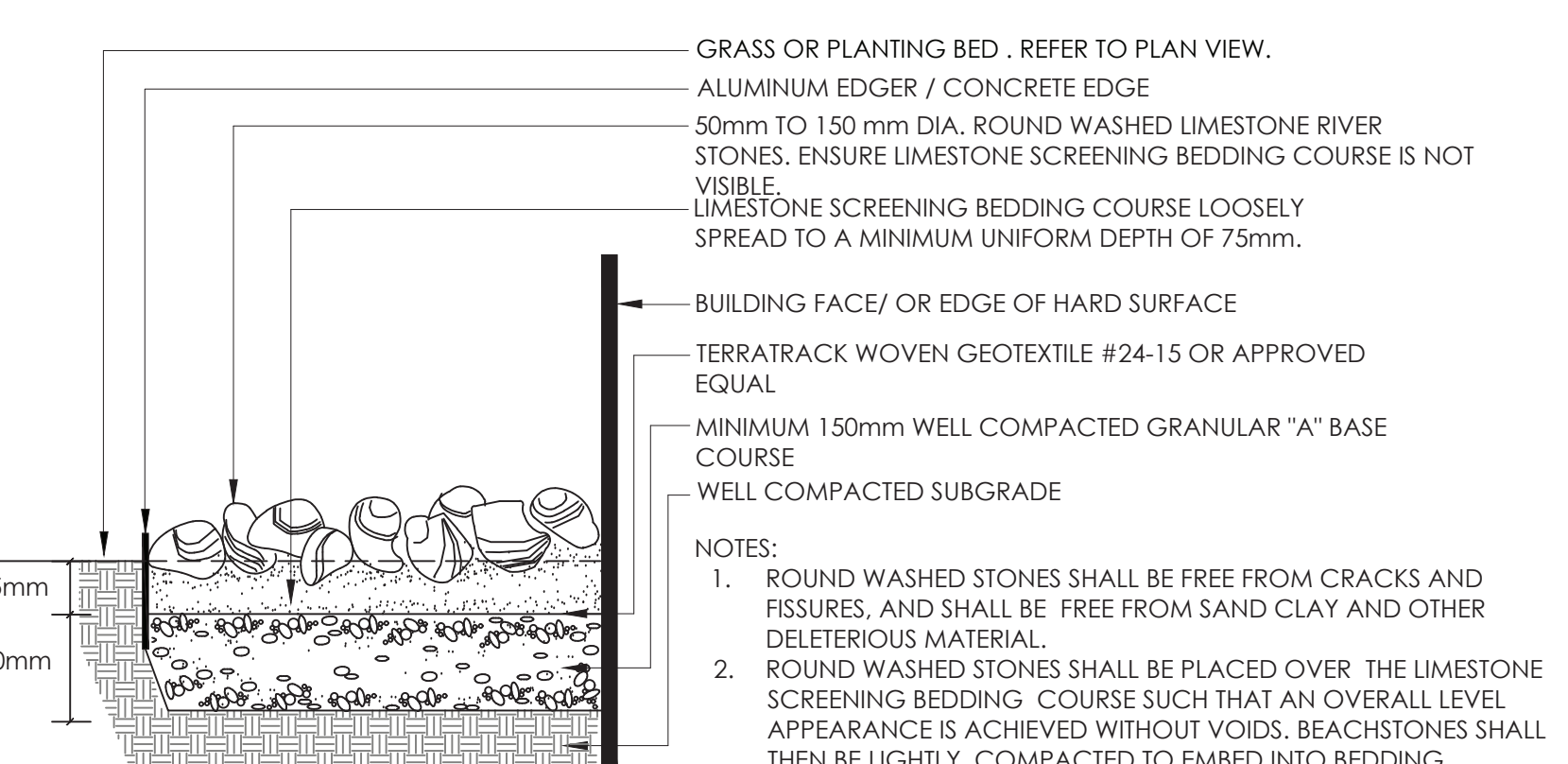
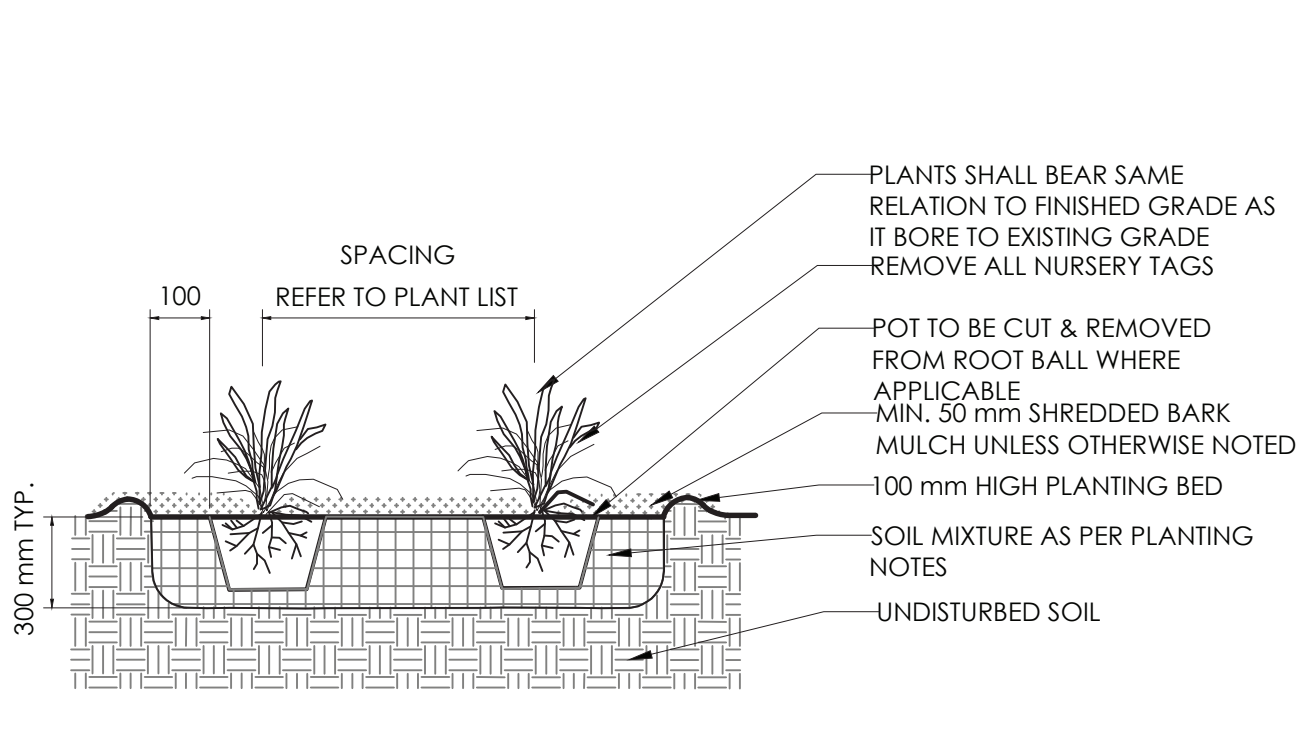
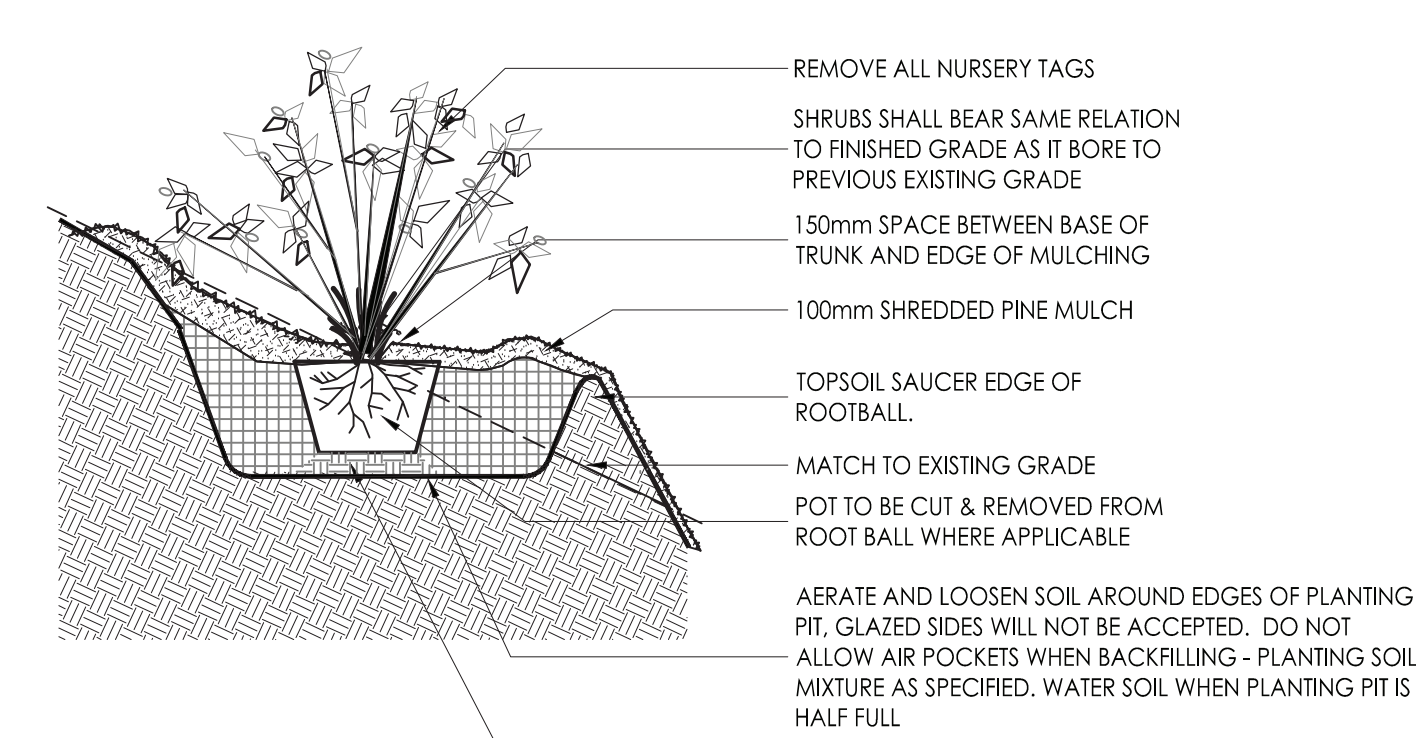
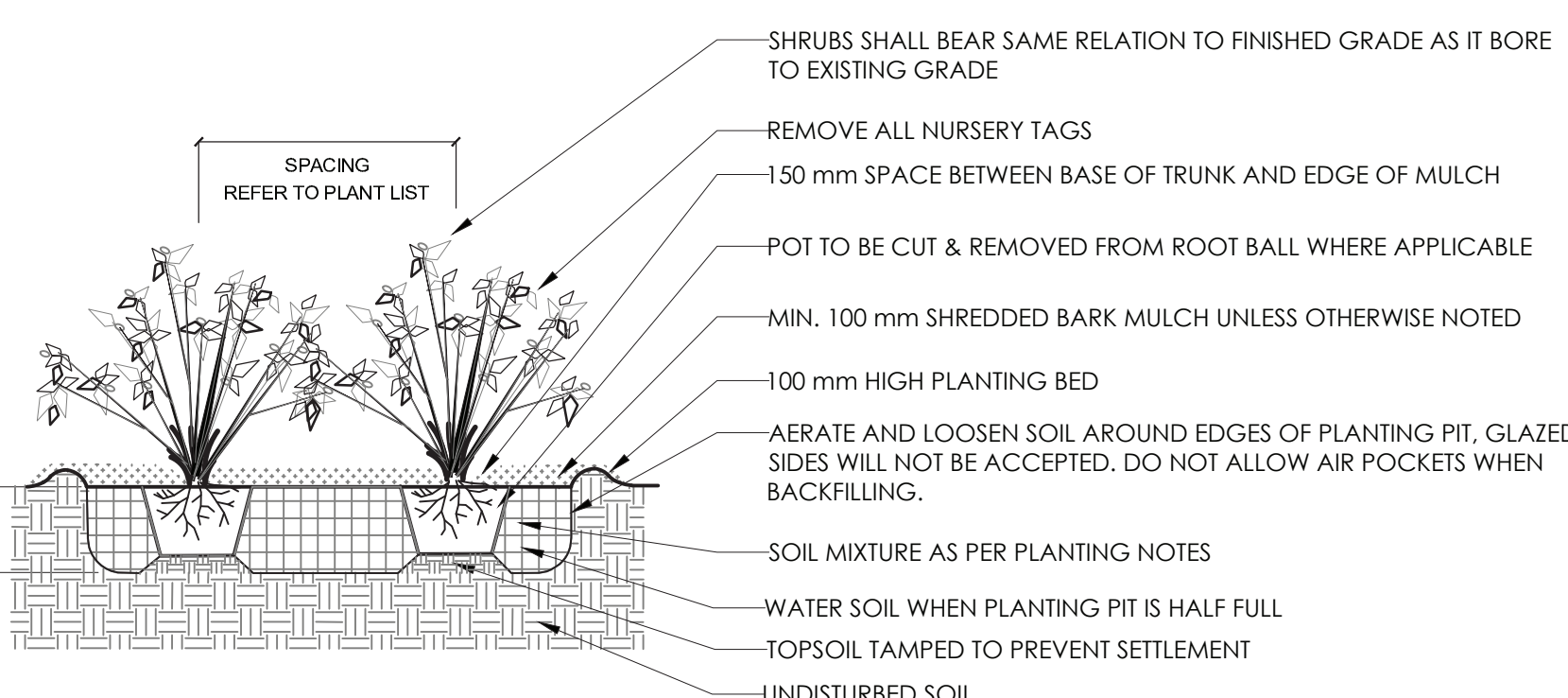
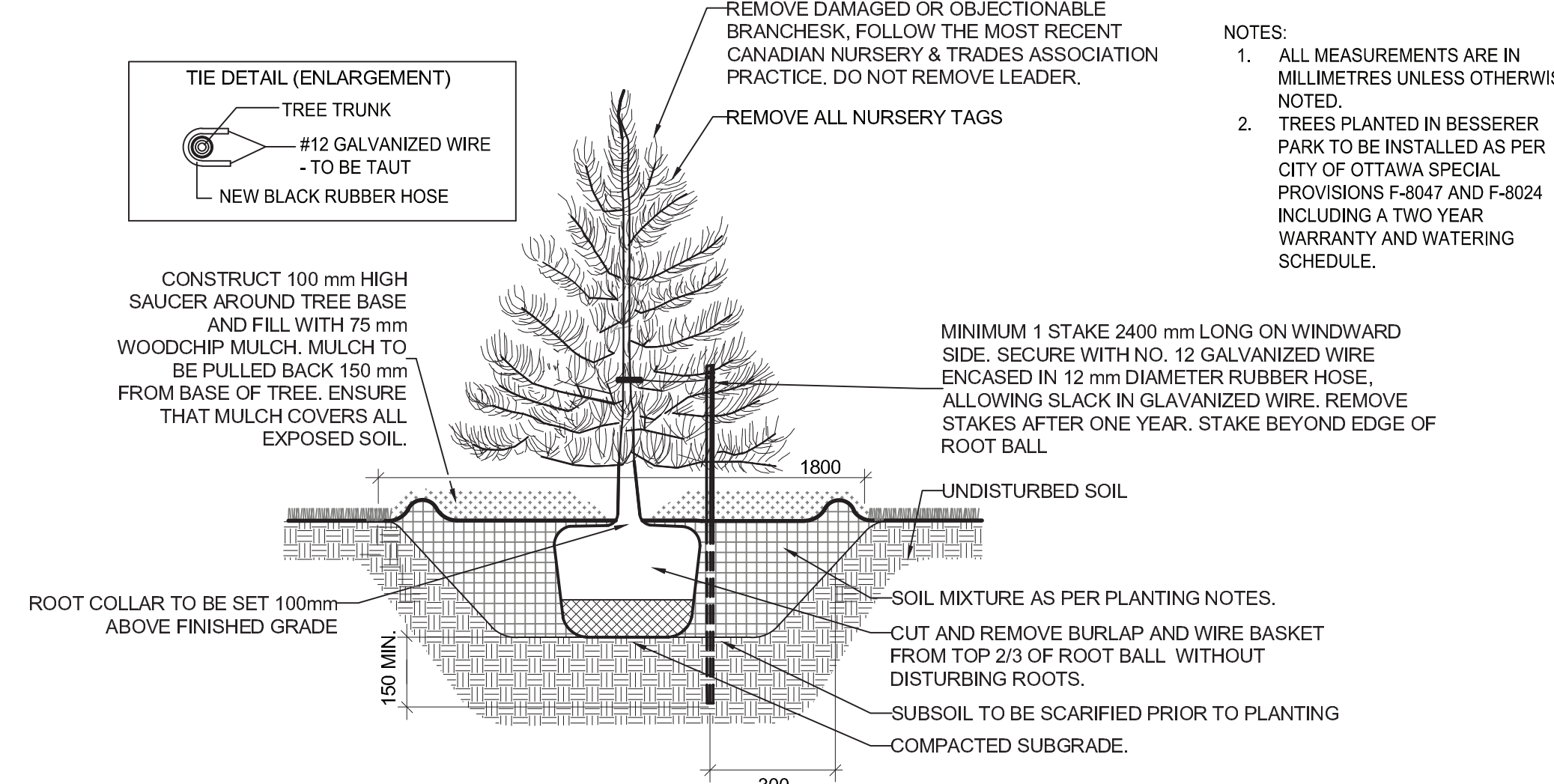
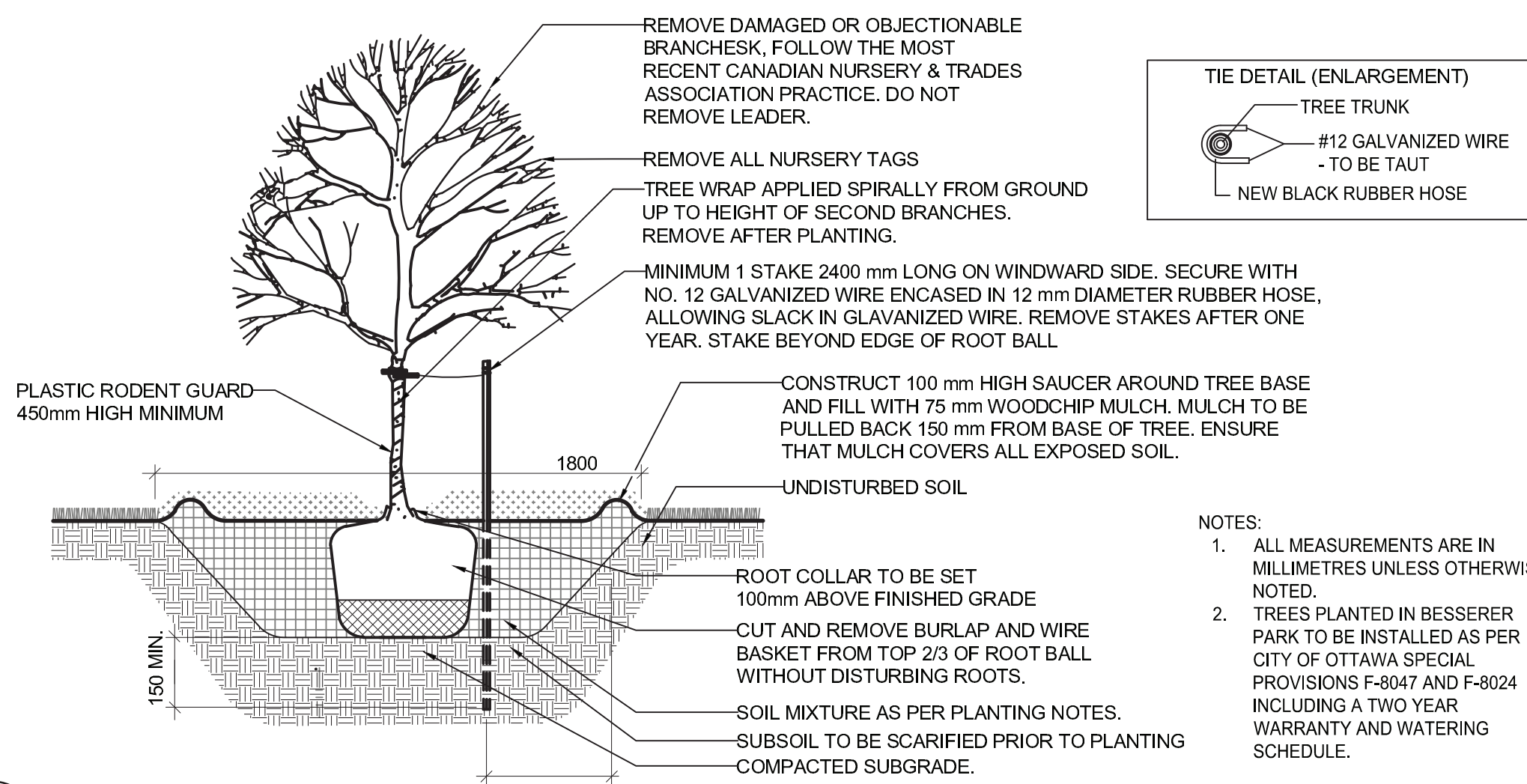
ORIGINAL SHEET - ARCHD

PLANTING NOTES

- THE DETAILS ON THIS SHEET DO NOT REPRESENT ANY PARTICULAR SPECIES.
- TREES AND SHRUBS AS INDICATED IN THE DETAILS REPRESENT BOTH CONIFEROUS AND DECIDUOUS SPECIES.
- MATERIAL PLANTED IN GROUP SHALL BE SET IN CONTINUOUS PLANTING BEDS. MULCH SHALL COVER THE ENTIRE PLANTING BEDS.
- CENTRE LINE OF SHRUBS SHALL NOT BE CLOSER THAN 2.4m FROM BUILDING FACE TO PROTECT BUILDING FOOTINGS AND INSULATION.
- PRUNING - TO SUIT SPECIES - PRUNE BRANCHES BY 1/3 TO REMOVE DAMAGED OR OBJECTIONABLE BRANCHES FOLLOWING PROPER HORTICULTURAL PRACTICE. DO NOT PRUNE LEADERS.
- FIRMLY COMPACT BACKFILLED PLANTING MIXTURE TO ELIMINATE AIR POCKETS OR PREVENT SETTLEMENT.
- PLANTING MATERIAL QUALITY STANDARDS:
 - ALL PLANT MATERIALS TO CONFORM TO THE CANADIAN NURSERY LANDSCAPE ASSOCIATION FOR VARIETY, SIZE AND CONDITION.
 - PLANT MATERIAL COLLECTED FROM WILD SOURCES WILL NOT BE ACCEPTED.
 - LANDSCAPE ARCHITECT RESERVES THE RIGHT TO REFUSE ACCEPTANCE OF ANY PLANT DISPLAYING POOR GROWTH HABITS, INJURY OR DISEASE.
 - ANY PLANTS THAT DO NOT CONFORM TO THE ABOVE STANDARDS WILL BE PROMPTLY REMOVED FROM THE SITE BY THE CONTRACTOR AND REPLACED WITH MATERIAL OF ACCEPTABLE QUALITY AT NO ADDITIONAL COST TO THE PROJECT.
- PLANTING SOIL:
 - SOIL TEXTURE BASED ON THE CANADIAN SYSTEM OF SOIL CLASSIFICATION TO CONSIST OF:
 - CLAY: 14-20%
 - SILT: 0-35%
 - SAND: 45-70%
 - ORGANIC MATERIAL: 4-10%
 - pH: 6-8
 - SPREAD TOPSOIL TO FOLLOWING MINIMUM DEPTHS AFTER SETTLEMENTS UNLESS OTHERWISE NOTED ON DETAILS:
 - 300mm FOR PERENNIALS
 - 500mm FOR SHRUB BEDS
 - 1000mm FOR TREE PLANTING
- MULCH:
 - MULCH SHALL BE SHREDDED WOOD VARYING IN SIZE FROM 25-125mm IN LENGTH FROM CONIFEROUS TREES.
- TREES PLANTED IN BESSERER PARK TO BE INSTALLED AS PER CITY OF OTTAWA SPECIAL PROVISIONS F-8047 AND F-8024 INCLUDING A TWO YEAR WARRANTY AND WATERING SCHEDULE.

PAVING NOTES - NON PERMEABLE

- BEDDING SAND SHALL BE MANUFACTURED SAND FOR BEDDING. IT SHALL BE HARD, DURABLE, CRUSHED STONE PARTICLES, CONFORMING TO GRADATION OF CONCRETE SAND AS SPECIFIED IN CSA A23.1 DO NOT USE LIMESTONE SCREENING, STONE DUST OR JOINT SAND FOR BEDDING SAND.
- JOINT SAND SHALL BE HARD, DURABLE ANGULAR PARTICLES, FREE FROM CLAY LUMPS, CEMENTATION, ORGANIC MATERIAL, FROZEN MATERIAL AND OTHER DELETERIOUS MATERIALS. JOINT SAND SHALL FILL SPACES BETWEEN PAVERS.
- PASS MECHANICAL PLATE VIBRATOR OVER UNIT PAVING TO ACHIEVE COMPACTION OF SAND IN JOINTS. ENSURE JOINTS ARE FULL AT COMPLETION OF COMPACTION.
- SURFACE OF FINISHED PAVEMENT SHALL BE FREE FROM DEPRESSIONS EXCEEDING 3mm AS MEASURED WITH 3m STRAIGHT EDGE.
- ALL MEASUREMENTS ARE IN MILLIMETERS UNLESS STATED OTHERWISE.



6	REVISED AS PER CITY COMMENTS	IL	IL	20.12.16
4	REVISED SITE PLAN	GM	IL	19.10.11
3	REVISED SITE PLAN	LZ	IL	18.10.26
2	REVISED SITE PLAN	IL	IL	17.01.23
1	ISSUED TO SITE PLAN CONTROL APPROVAL	BD	IL	16.10.19
Revision		By	Appd.	YY.MM.DD
File Name: 160401234-L3		BD	IL	IL
		Dwn.	Chkd.	Dgn.
				YY.MM.DD

Permit-Seal



Client/Project
TC UNITED GROUP

244 FOUNTAIN PLACE

OTTAWA, ON

Title
LANDSCAPE DETAILS

Project No.	Scale
160401234	VARIES
Drawing No.	Sheet
	Revision