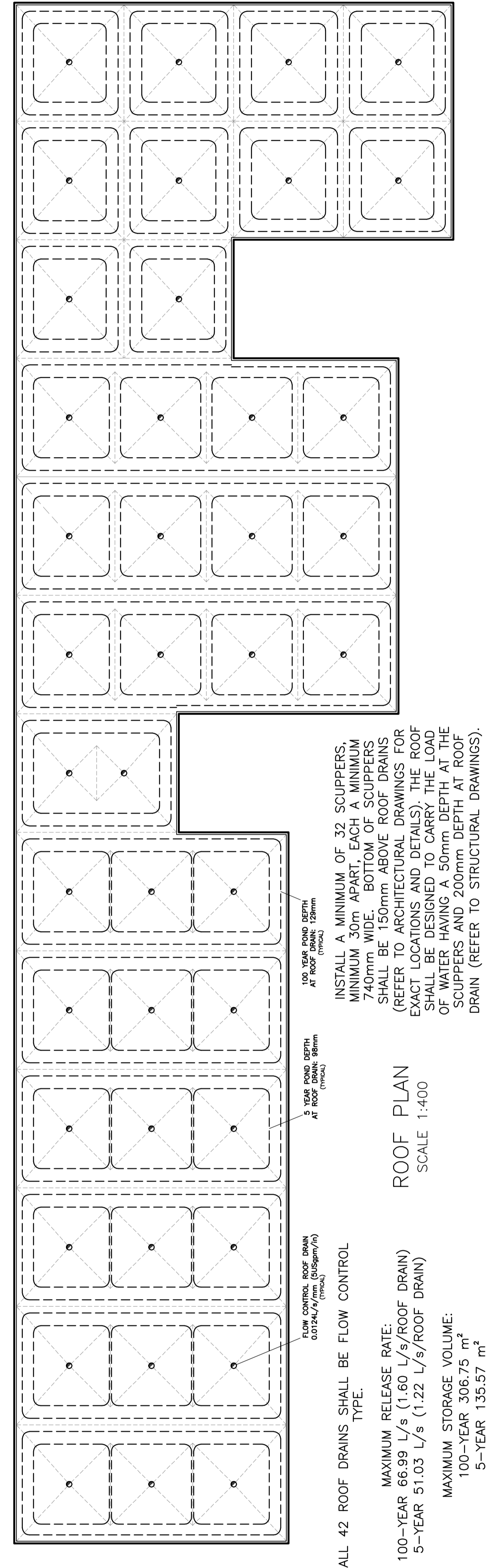


APPROVED REFUSED

THIS 02 DAY OF December, 2020

Erin O'Connell

ERIN O'CONNELL, M.C.I.P., R.P.P. MANAGER (A)
 DEVELOPMENT REVIEW, WEST
 PLANNING, INFRASTRUCTURE AND ECONOMIC
 DEVELOPMENT DEPARTMENT, CITY OF OTTAWA



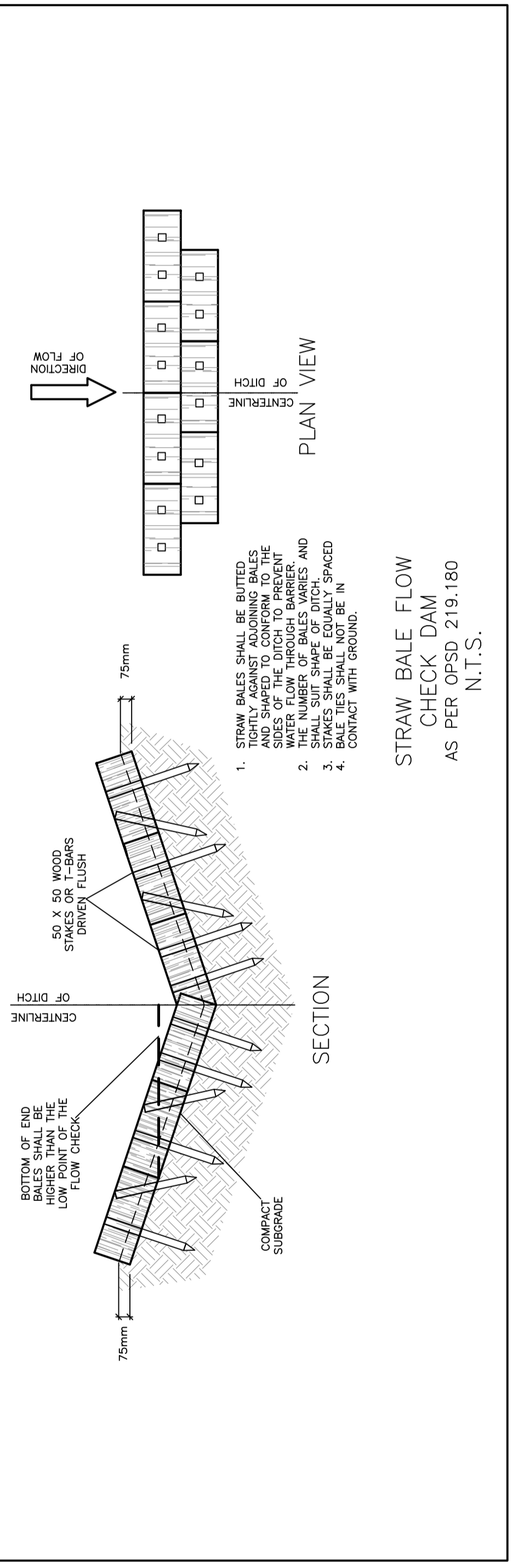
ALL 42 ROOF DRAINS SHALL BE FLOW CONTROL TYPE.

MAXIMUM RELEASE RATE:
 100-YEAR 66.99 L/s (1.60 L/s/ROOF DRAIN)
 5-YEAR 51.03 L/s (1.22 L/s/ROOF DRAIN)

MAXIMUM STORAGE VOLUME:
 100-YEAR 306.75 m³
 5-YEAR 135.57 m³

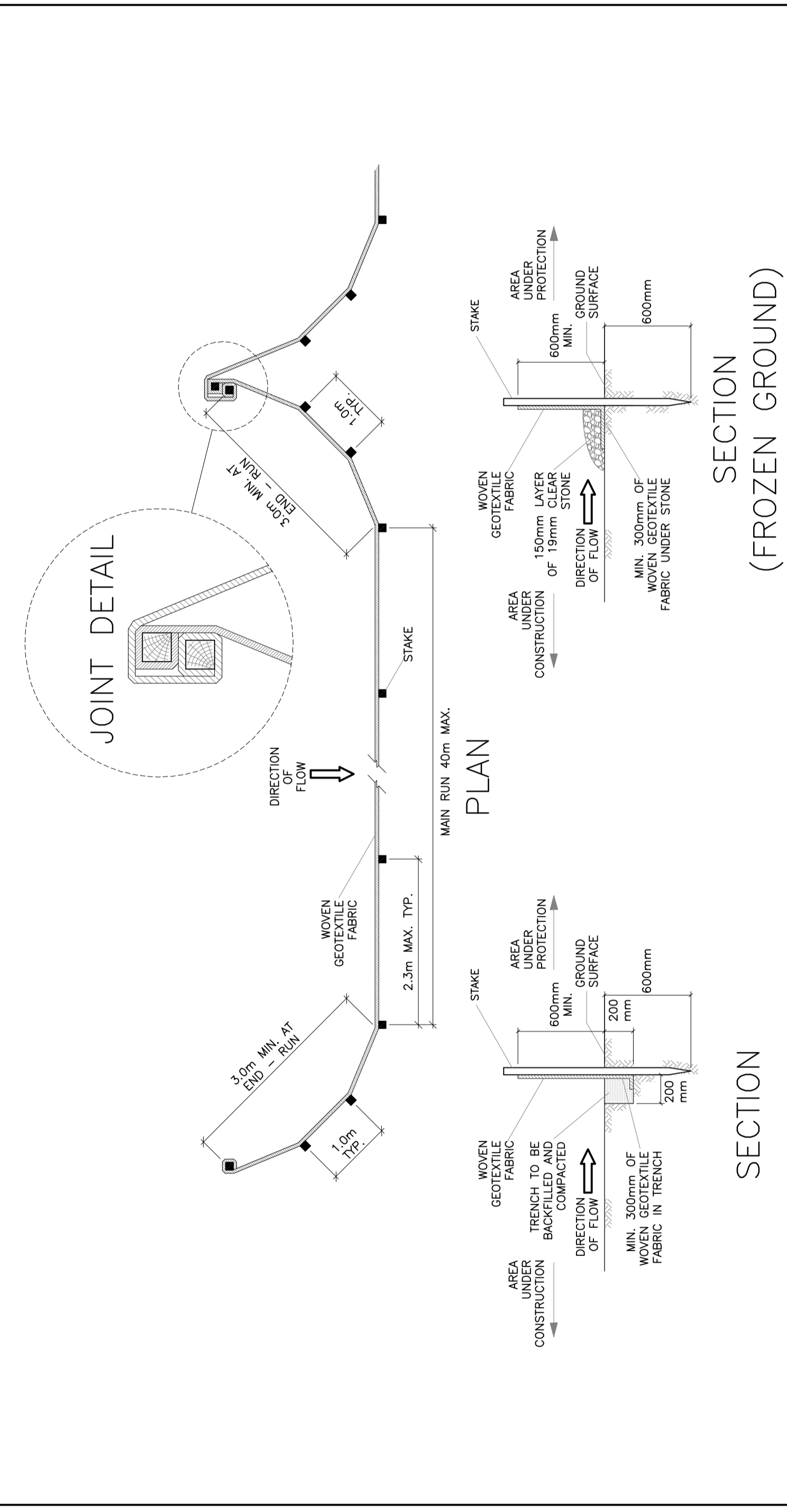
INSTALL A MINIMUM OF 32 SCUPPERS, MINIMUM 30m APART, EACH A MINIMUM 740mm WIDE. BOTTOM OF SCUPPERS SHALL BE 150mm ABOVE ROOF DRAINS (REFER TO ARCHITECTURAL DRAWINGS FOR EXACT LOCATIONS AND DETAILS). THE ROOF SHALL BE DESIGNED TO CARRY THE LOAD OF WATER HAVING A 50mm DEPTH AT THE SCUPPERS AND 200mm DEPTH AT ROOF DRAIN (REFER TO STRUCTURAL DRAWINGS).

ROOF PLAN
SCALE 1:400



STRAW BALE FLOW CHECK DAM
 AS PER OPSD 219.180
 N.T.S.

SILT FENCE BARRIER
 AS PER OPSD 219.110
 (MODIFIED FOR FROZEN GROUND)
 N.T.S.



SECTION (FROZEN GROUND)

D. B. GRAY ENGINEERING INC.
 700 Long Point Circle
 Ottawa, Ontario
 613-425-8044
 4gray@dbgrayengineering.com

**PROPOSED
 1 STOREY
 INDUSTRIAL WAREHOUSE
 1265 TERON ROAD
 OTTAWA, ONTARIO**

DETAILS

Drawing Title

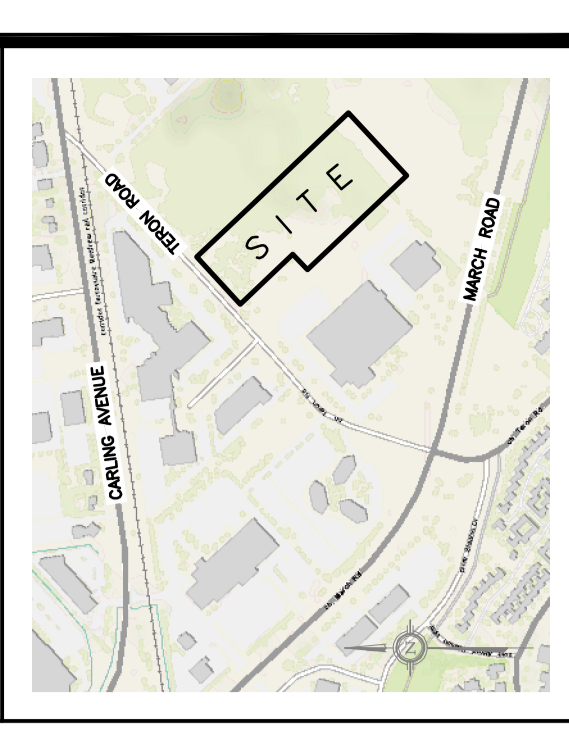
Engineer's Seal
U.S. GRAY
 731.6502
 REG. 2-2004
 LICENSED PROFESSIONAL ENGINEER
 PROVINCE OF ONTARIO

Drawn: D.B.G.
 Hor. Scale
 Vert. Scale
 Date: OCT 18-19
 Job No.: 19057

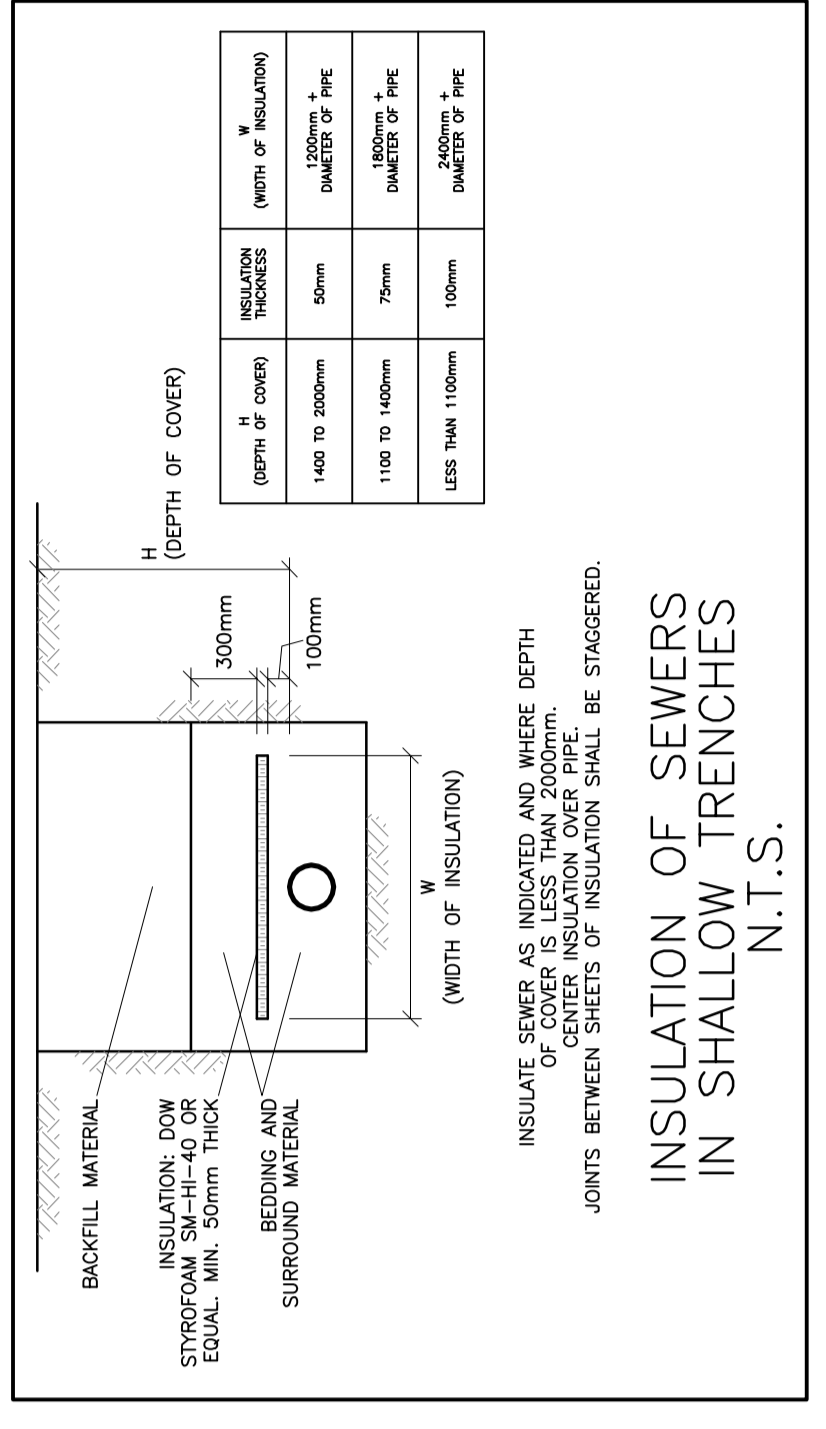
Drawn: No. **C-3**
 of **6**

#18115
 NOT VALID UNLESS SIGNED & DATED

No.	DATE	REVISION
5	DEC 2-20	RE-ISSUED WITH UPDATED ADDRESS
4	JUL 13-20	RE-ISSUED FOR APPROVAL
3	MAY 11-20	RE-ISSUED FOR APPROVAL
2	FEB 13-20	ISSUED FOR APPROVAL
1	FEB 11-20	ISSUED FOR COORDINATION

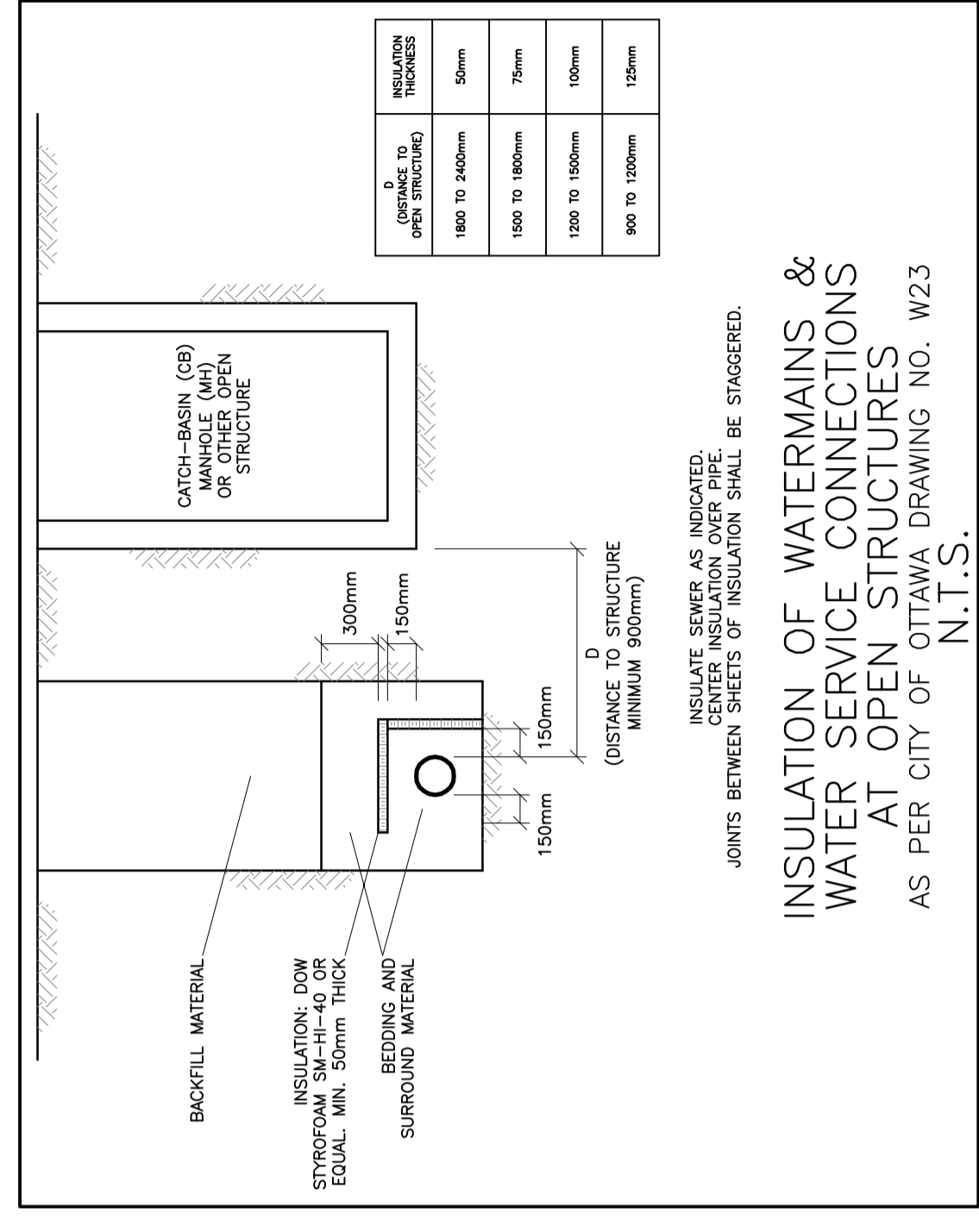


KEY PLAN



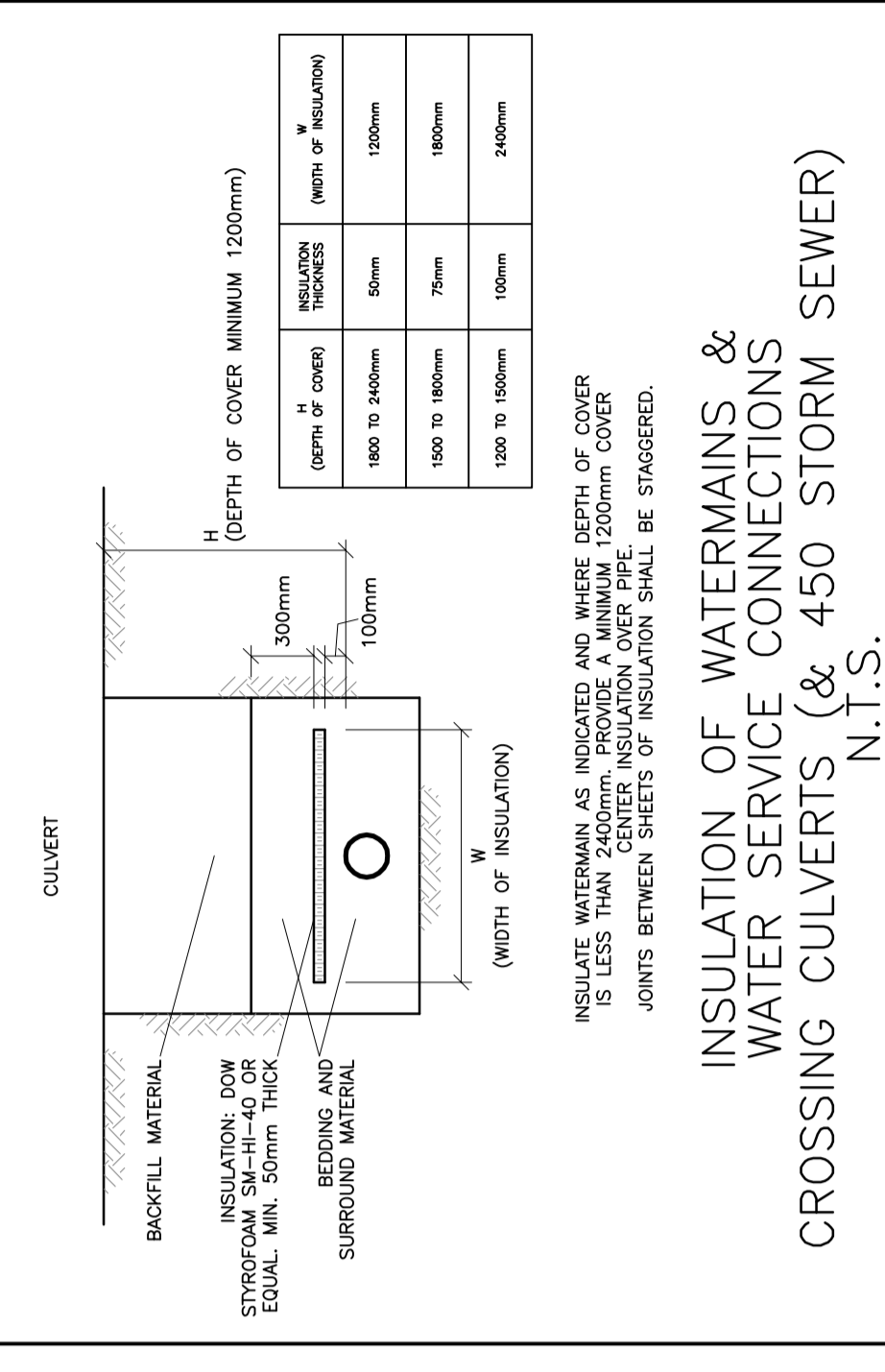
INSULATE SEWERS AS INDICATED AND WHERE DEPTH OF COVER IS LESS THAN 200mm, CENTER INSULATION OVER PIPE. JOINTS BETWEEN SHEETS OF INSULATION SHALL BE STAGGERED.

**INSULATION OF SEWERS
 IN SHALLOW TRENCHES
 N.T.S.**



INSULATE SEWERS AS INDICATED AND WHERE DEPTH OF COVER IS LESS THAN 200mm, CENTER INSULATION OVER PIPE. JOINTS BETWEEN SHEETS OF INSULATION SHALL BE STAGGERED.

**INSULATION OF WATERMANS &
 WATER SERVICE CONNECTIONS
 AT OPEN STRUCTURES
 AS PER CITY OF OTTAWA DRAWING NO. W23
 N.T.S.**



INSULATE WATERMANS AS INDICATED AND WHERE DEPTH OF COVER IS LESS THAN 200mm, CENTER INSULATION OVER PIPE. JOINTS BETWEEN SHEETS OF INSULATION SHALL BE STAGGERED.

**INSULATION OF WATERMANS &
 WATER SERVICE CONNECTIONS
 CROSSING CULVERTS (& 450 STORM SEWER)
 N.T.S.**

D. B. GRAY ENGINEERING INC.
 700 Long Point Circle
 Ottawa, Ontario
 613-425-8044
 4gray@dbgrayengineering.com

**PROPOSED
 1 STOREY
 INDUSTRIAL WAREHOUSE
 1265 TERON ROAD
 OTTAWA, ONTARIO**

DETAILS

Drawing Title

Engineer's Seal
U.S. GRAY
 731.6502
 REG. 2-2004
 LICENSED PROFESSIONAL ENGINEER
 PROVINCE OF ONTARIO

Drawn: D.B.G.
 Hor. Scale
 Vert. Scale
 Date: OCT 18-19
 Job No.: 19057

Drawn: No. **C-3**
 of **6**

#18115
 NOT VALID UNLESS SIGNED & DATED

D07-12-20-0017