

RICHCRAFT
TRAILEDGE RENTAL BLOCKS
193 & 194 SITE PLAN



LIST OF DRAWINGS:

- L01 - LANDSCAPE PLAN
- D1 - DETAILS
- D2 - DETAILS
- D3 - DETAILS
- D4 - CROSS SECTIONS

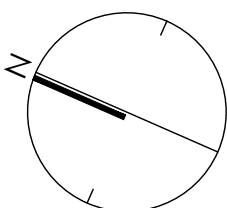
GENERAL NOTES:

1. CELTIS OCCIDENTALIS TO BE SPRING DUG SPECIMENS AND PLANTED IN THE SPRING ONLY.
2. THE LOCATION OF THE TREES SHOWN ON THIS PLAN IS APPROXIMATE AND SHALL NOT BE SCALED FROM THIS DRAWING. THIS PLAN MUST BE READ IN CONJUNCTION WITH THE APPROVED CUP, GRADING AND SITE PLAN.
3. CONTRACTOR SHALL ENSURE THAT ALL UTILITY LOCATIONS ARE OBTAINED PRIOR TO ANY EXCAVATION FOR LANDSCAPING.
4. LOCATION OF ALL PLANT MATERIALS TO BE STAKED BY THE CONTRACTOR AND VERIFIED IN THE FIELD BY LANDSCAPE ARCHITECT PRIOR TO THE EXCAVATION OF PITS.
5. ALL PLANT MATERIAL SHALL BE NURSERY GROWN STOCK UNLESS OTHERWISE NOTED.
6. TREES TO HAVE A MINIMUM 1800 CLEAR STEM ABOVE GRADE.
7. PLACE SOD ON A MINIMUM 150mm TOPSOIL.
8. CONTRACTOR TO MAKE GOOD ALL EXISTING AREAS DAMAGED BY HIS WORK TO THE SATISFACTION OF THE CITY OF OTTAWA.
9. THE CITY WILL BE NOTIFIED IF ANY TREES CANNOT BE LOCATED OR PLANTED DUE TO CONFLICTS WITH UTILITIES OR DRIVEWAYS. THE REQUIRED TREES NOT PLANTED ARE SUBJECT TO TREE BANKING. THE FINAL NUMBER OF TREES TO BE BANKED WILL BE PROVIDED TO THE CITY FOLLOWING ALL PLANTINGS.
10. ALL PLANT MATERIAL SHALL BE WARRANTED FOR TWO YEARS FROM THE DATE OF SUBSTANTIAL PERFORMANCE AS DETERMINED BY THE CITY OF OTTAWA.
11. PERIODIC REVIEWS OF PLANTING SHALL BE CARRIED OUT BY THE LANDSCAPE ARCHITECT.
12. PLANTINGS TO BE STAKED FOR APPROVAL PRIOR TO CONSTRUCTION
13. CITY GRASS CUTTING RESPONSIBILITIES FOR SODDED AREAS SHALL BEGIN FOLLOWING PERFORMANCE ACCEPTANCE INSPECTION BY THE LANDSCAPE ARCHITECT AND THE CITY. ACCEPTANCE WILL BE PROVIDED ONLY IF:
 - SOD IS PROPERLY ESTABLISHED.
 - TURF IS FREE OF DEAD SPOTS AND WEEDS.
 - SODDED AREAS HAVE BEEN CUT WITHIN 24 HOURS PRIOR TO ACCEPTANCEINSPECTION:
 - MINIMUM OF 3 WEEKS HAVE ELAPSED FOLLOWING LAYING OF SOD.
 - A MINIMUM OF TWO CUTS HAVE TAKEN PLACE
 - SODDED AREAS HAVE BEEN TOP-DRESSED, SEEDDED AND AERATED
14. STREET TREE PLANTING GUIDELINE
NOTE: APPROVED CROSS SECTIONS SHALL TAKE PRECEDENCE
 - 4.5m - STREET LIGHT
 - 2.5m - STREET LIGHT (SMALL TREE <7m MATURE HT.)
 - 3.0m - HYDRO TRANSFORMER
 - 1.5m - PATH, DRIVEWAY, FENCE, SOUND WALL
 - 4.5m - CONIFERS MINIMUM SETBACK FROM CURB
 - 2.5m - FIRE HYDRANTS
 - 1.5m - WATER SERVICE / CURB STOP
 - 1.0m - BELL / CABLE PEDESTALS

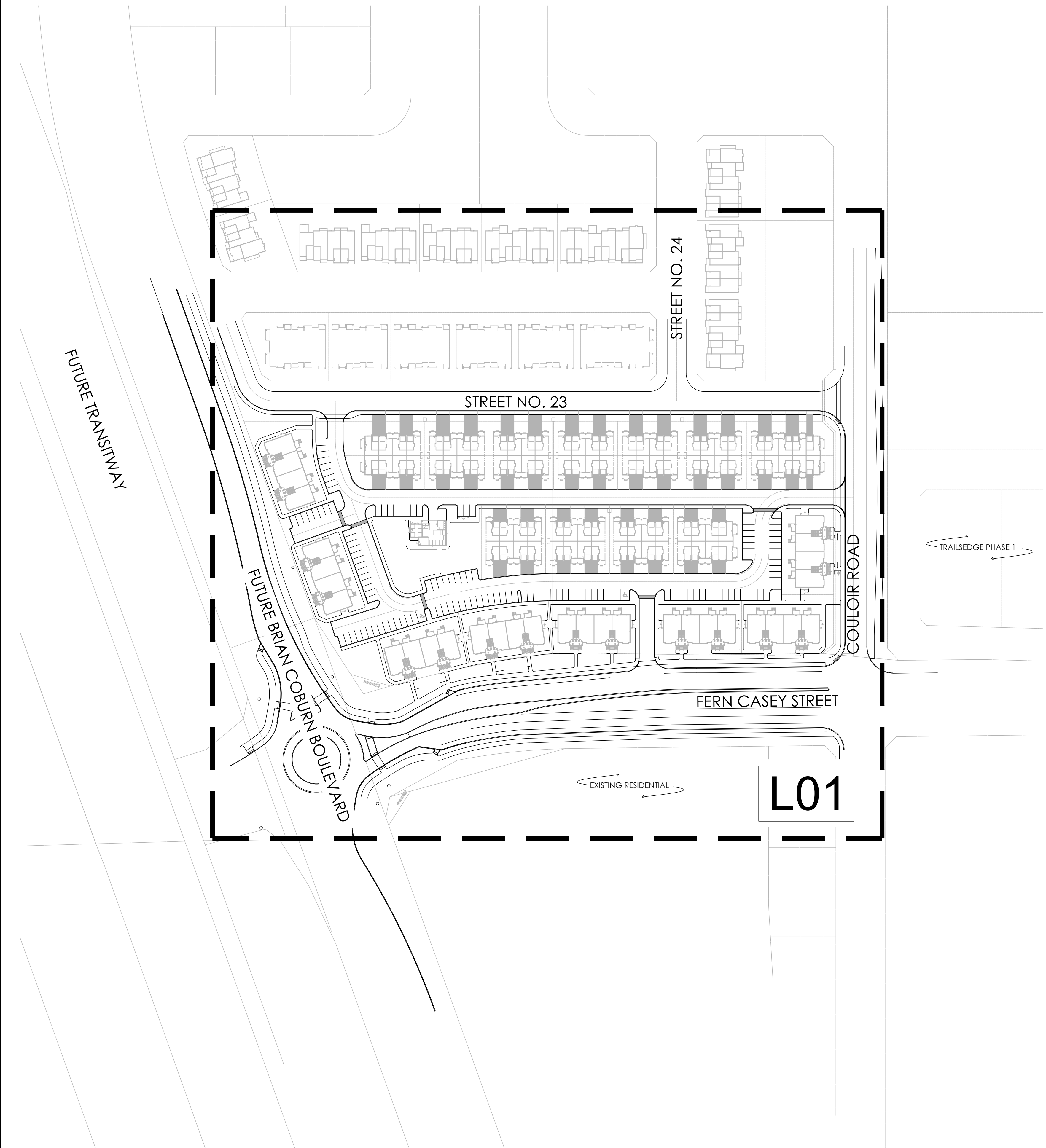
TREE PLANTING IN MARINE CLAY SOILS

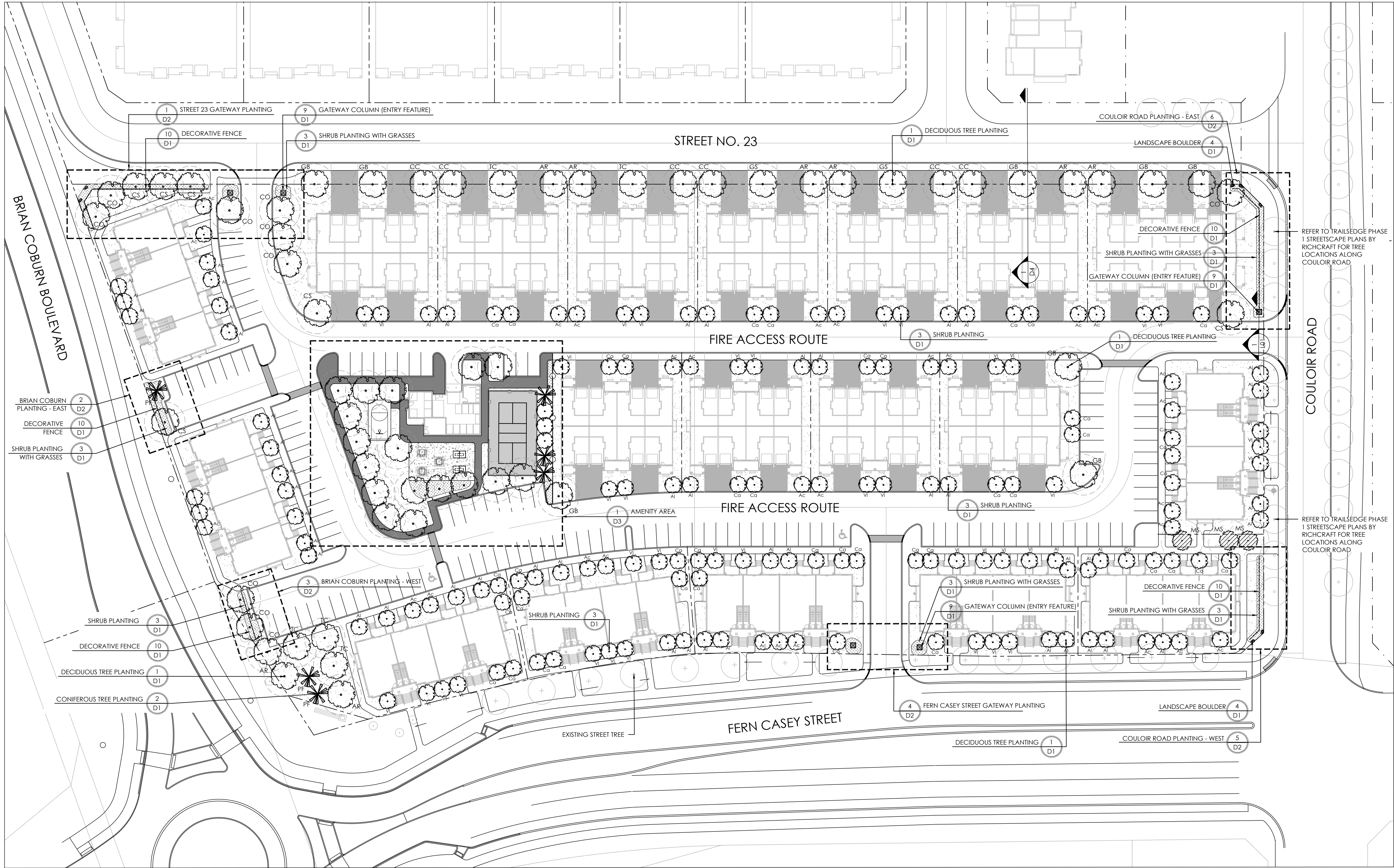
*THE LANDSCAPE CONSIDERATIONS CONTAINED WITHIN SEC. 6.8 OF PATERSON GROUP'S GEOTECHNICAL INVESTIGATION, DATED 24 JULY 2020 HAVE BEEN IMPLEMENTED.

1. THIS LANDSCAPE PLAN CONFORMS WITH THE TREE-TO-FOUNDATION SETBACK, SOIL VOLUME, AND SURFACE-GRADING REQUIREMENTS OUTLINED IN THE CITY OF OTTAWA'S GUIDELINES FOR TREE PLANTING IN SENSITIVE MARINE CLAY SOILS (2017), BASED ON THE FINDINGS OUTLINED IN THE PROJECT GEOTECHNICAL REPORT.
2. ADDITIONAL REQUIREMENTS OUTLINED IN THE CITY OF OTTAWA'S GUIDELINES FOR TREE PLANTING IN SENSITIVE MARINE CLAY SOILS (2017), INCLUDING USE DEPTH, FOUNDATION WALL REINFORCEMENT, AND SUBDIVISION GRADING, SHOULD BE CONFIRMED BY THE PROJECT ENGINEER(S).
3. THE CONTRACTOR SHOULD REPORT ANY DISCREPANCIES TO THE CONTRACT ADMINISTRATOR BEFORE PLANTING TREES.
4. CITY OF OTTAWA: GUIDELINES FOR TREE PLANTING IN SENSITIVE MARINE CLAY SOILS (2017): THE FOLLOWING GUIDELINES ARE PRIMARILY FOCUSED ON SMALL AND MEDIUM SIZE STREET TREES. HOWEVER, LARGE TREES (MATURE HEIGHT OVER 14M) CAN STILL BE PLANTED IN AREAS OF SMC SOILS PROVIDED A TREE TO FOUNDATION SETBACK EQUAL TO THE FULL MATURE HEIGHT OF THE TREE CAN BE PROVIDED (E.G. IN A PARK OR OTHER GREEN SPACE). FOR STREET TREES IN THE ROAD RIGHT-OF-WAY WHERE SMC SOILS HAVE BEEN IDENTIFIED, THE TREE TO FOUNDATION SETBACKS MAY BE REDUCED TO 4.5M FOR SMALL (MATURE TREE HEIGHT UP TO 7.5M) AND MEDIUM SIZE TREES (MATURE TREE HEIGHT 7.5M-14M) PROVIDED ALL OF THE FOLLOWING SIX CONDITIONS ARE MET:
 - THE MODIFIED PLASTICITY INDEX OF THE SOIL BETWEEN THE UNDERSIDE OF FOOTING (USF) AND A DEPTH OF 3.5M GENERALLY DOES NOT EXCEED 40%. THIS CORRESPONDS TO SOILS WITH LOW/MEDIUM POTENTIAL FOR SOIL VOLUME CHANGE. CLAY SOILS THAT EXCEED THE 40% PLASTICITY INDEX ARE CONSIDERED TO HAVE HIGH POTENTIAL FOR SOIL VOLUME CHANGE. FOR THESE WORST-CASE SOILS, THE SETBACKS AND TREE PLANTING RESTRICTIONS REMAIN UNCHANGED FROM THE 2005 CLAY SOILS POLICY (TREE SETBACK MUST EQUAL THE MATURE HEIGHT OF THE TREE - I.E. 7.5M SETBACK FOR SMALL TREES).
 - THE USF IS 2.1M OR GREATER BELOW THE LOWEST FINISHED GRADE. NOTE: THIS FOOTING LEVEL MUST BE SATISFIED FOR FOOTINGS WITHIN 10M OF THE TREE, AS MEASURED FROM THE CENTRE OF THE TREE TRUNK, AND VERIFIED BY MEANS OF THE GRADING PLAN AS INDICATED IN THE PROCEDURAL CHANGES BELOW.
 - A SMALL SIZE TREE MUST BE PROVIDED WITH A MINIMUM OF 25M³ OF AVAILABLE SOIL VOLUME, AS DETERMINED BY A LANDSCAPE ARCHITECT. A MEDIUM SIZE TREE MUST BE PROVIDED WITH A MINIMUM OF 30M³ OF AVAILABLE SOIL VOLUME, AS DETERMINED BY A LANDSCAPE ARCHITECT. THE DEVELOPER WILL ENSURE THE SOIL IS GENERALLY UNCOMPACTED WHEN BACKFILLING IN STREET TREE PLANTING LOCATIONS.
 - THE SOIL VOLUME CALCULATION MUST BE BASED ON A DEPTH OF 1.5M BELOW FINISHED GRADE (E.G. 5M LENGTH X 4M WIDTH AT SURFACE X 1.5M DEPTH = 30M³). IT MAY INCLUDE LANDS IN THE RIGHT-OF-WAY AND ON PRIVATE PROPERTY, BUT MUST SUBTRACT THE VOLUME OF SHALLOW UTILITY TRENCHES (I.E. VOLUME OF SHALLOW UTILITY TRENCHES CANNOT COUNT TOWARDS MINIMUM SOIL VOLUME).
 - THE TREE SPECIES MUST BE SMALL TO MEDIUM SIZE, AS CONFIRMED BY A LANDSCAPE ARCHITECT IN THE LANDSCAPE PLAN.
 - THE FOUNDATION WALLS ARE TO BE REINFORCED AT LEAST NOMINALLY (MINIMUM OF TWO UPPER AND TWO LOWER 13M BARS IN THE FOUNDATION WALL) TO PROVIDE DUCTILITY AS DESCRIBED IN THE GEOTECHNICAL REPORT.
 - GRADING SURROUNDING THE TREE MUST PROMOTE DRAINING TO THE TREE ROOT ZONE (IN SUCH A MANNER AS NOT TO BE DETRIMENTAL TO THE TREE), AS NOTED ON THE SUBDIVISION GRADING PLAN.

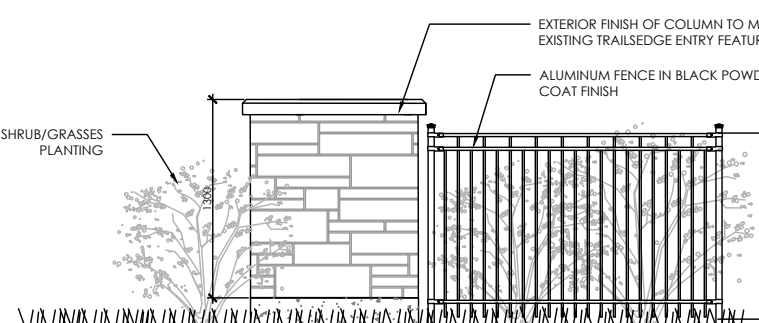


KEYMAP
NTS



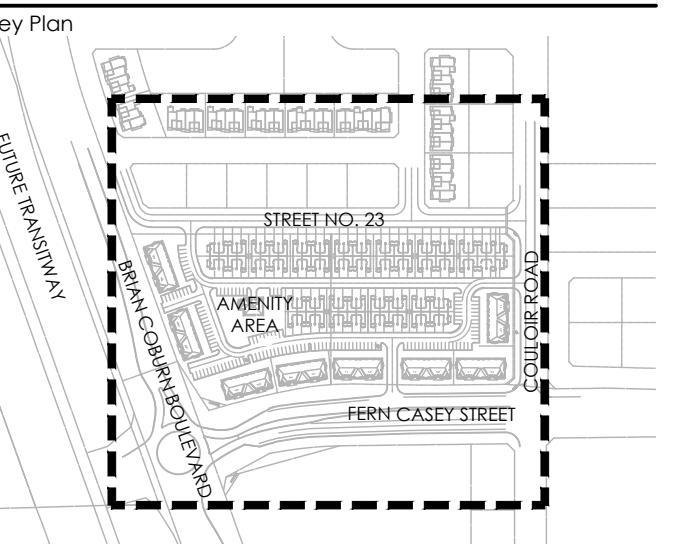


THIS PLAN IS FOR APPROVAL AND TENDERING PURPOSES ONLY. NOT FOR CONSTRUCTION. THIS PLAN SHALL BE READ IN CONJUNCTION WITH DRAWINGS PREPARED BY HYDRO OTTAWA, BELL CANADA, ROGERS CABLE AND ENBRIDGE GAS. THE CITY OF OTTAWA STANDARDS SHALL GOVERN OVER THIS DRAWING.



1 SECTION- GATEWAY COLUMN FEATURE
N.T.S.

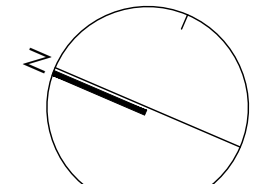
Contractor shall check all dimensions on the work and report any discrepancy to the Landscape Architect before proceeding. All drawings and specifications are the property of the Landscape Architect and must be returned at the completion of the work. This drawing is not to be used for construction until signed by the Landscape Architect.



LEGEND

- FENCING**
- PROPERTY LINE
 - DECORATIVE FENCE
 - GATEWAY COLUMN
- PLANTING**
- EXISTING STREET TREE
 - MEDIUM DECIDUOUS TREE (7.5m TO 14m HEIGHT)
 - SMALL TREE (<7.5m HEIGHT)
 - SHRUB (TREE FORM)
 - CONIFEROUS STREET TREE
 - DECIDUOUS SHRUB
 - CONIFEROUS SHRUB
 - ORNAMENTAL GRASSES
 - LANDSCAPE BOULDER
 - SODDING
 - PLANTING BED
- SURFACING**
- C.I.P. CONCRETE
 - ASPHALT PAVING
 - PICKLEBALL COURT SURFACE
- AMENITIES**
- UMBRELLA SHADE SHELTER
 - CONCRETE PING PONG TABLE
 - BASKETBALL KEY AND HOOP

1	Issued for 1st Submission	Dec. 14/20
2	Issued for Client Review	Nov. 20/20
1	Issued for Client Review	Aug. 12/20
No.	Description	Date
Revision		
City Approval Stamp		



NAK
design strategies

1285 WELLINGTON STREET WEST, OTTAWA, ON K1Y 3A8 CANADA
T 413.237.2345 F 413.237.4423 NAK@DESIGNSTRATEGIES.COM

TRAILEDGE RENTAL BLOCKS
193 & 194 SITE PLAN
OTTAWA, ON

LANDSCAPE PLAN

Date	DECEMBER 2020	Sheet	L01
Scale	1:500		
Drawn	is		
Checked	jh		
Job No.	20-135		

GENERAL NOTES:

- CELTIS OCCIDENTALIS TO BE SPRING DIG SPECIMENS AND PLANTED IN THE SPRING ONLY.
- THE LOCATION OF THE TREES SHOWN ON THIS PLAN IS APPROXIMATE AND SHALL NOT BE SCALED FROM THIS DRAWING. THIS PLAN MUST BE READ IN CONJUNCTION WITH THE APPROVED CUP, GRADING AND SITE PLAN.
- CONTRACTOR SHALL ENSURE THAT ALL UTILITY LOCATIONS ARE OBTAINED PRIOR TO ANY EXCAVATION FOR LANDSCAPING.
- LOCATION OF ALL PLANT MATERIALS TO BE STAKED BY THE CONTRACTOR AND VERIFIED IN THE FIELD BY LANDSCAPE ARCHITECT PRIOR TO THE EXCAVATION OF PITS.
- ALL PLANT MATERIAL SHALL BE NURSERY GROWN STOCK UNLESS OTHERWISE NOTED.
- TREES TO HAVE A MINIMUM 1800 CLEAR STEM ABOVE GRADE.
- PLACE SOD ON A MINIMUM 150mm TOPSOIL.
- CONTRACTOR TO MAKE GOOD ALL EXISTING AREAS DAMAGED BY HIS WORK TO THE SATISFACTION OF THE CITY OF OTTAWA.
- THE CITY WILL BE NOTIFIED IF ANY TREES CANNOT BE LOCATED OR PLANTED DUE TO CONFLICTS WITH UTILITIES OR DRIVEWAYS. THE REQUIRED TREES NOT PLANTED ARE SUBJECT TO TREE BANKING. THE FINAL NUMBER OF TREES TO BE BANKED WILL BE PROVIDED TO THE CITY FOLLOWING ALL PLANTINGS.
- ALL PLANT MATERIAL SHALL BE WARRANTIED FOR TWO YEARS FROM THE DATE OF SUBSTANTIAL PERFORMANCE AS DETERMINED BY THE CITY OF OTTAWA.
- PERIODIC REVIEWS OF PLANTING SHALL BE CARRIED OUT BY THE LANDSCAPE ARCHITECT.
- PLANTINGS TO BE STAKED FOR APPROVAL PRIOR TO CONSTRUCTION
- CITY GRASS CUTTING RESPONSIBILITIES FOR SODDED AREAS SHALL BEGIN FOLLOWING PERFORMANCE ACCEPTANCE INSPECTION BY THE LANDSCAPE ARCHITECT AND THE CITY. ACCEPTANCE WILL BE PROVIDED ONLY IF:
 - SOD IS PROPERLY ESTABLISHED.
 - TURF IS FREE OF DEAD SPOTS AND WEEDS.
 - SODDED AREAS HAVE BEEN CUT WITHIN 24 HOURS PRIOR TO ACCEPTANCE
- STREET TREE PLANTING GUIDELINE
NOTE: APPROVED CROSS SECTIONS SHALL TAKE PRECEDENCE
 - 4.5m - STREET LIGHT
 - 2.5m - STREET LIGHT (SMALL TREE <7m MATURE HT.)
 - 3.0m - HYDRO TRANSFORMER
 - 1.5m - PATH, DRIVEWAY, FENCE, SOUND WALL
 - 4.5m - CONIFERS MINIMUM SETBACK FROM CURB
 - 2.5m - FIRE HYDRANTS
 - 1.5m - WATER SERVICE / CURB STOP
 - 1.0m - BELL / CABLE PEDESTALS

TREE PLANTING IN MARINE CLAY SOILS

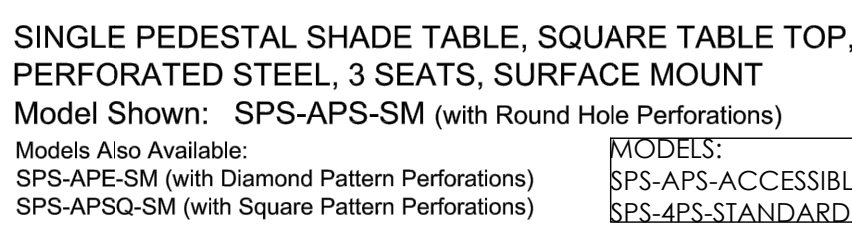
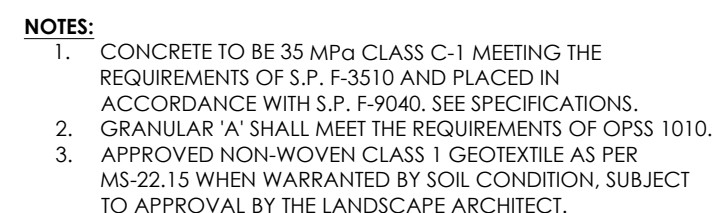
*THE LANDSCAPE CONSIDERATIONS CONTAINED WITHIN SEC. 6.8 OF PATERSON GROUP'S GEOTECHNICAL INVESTIGATION, DATED 24 JULY 2020 HAVE BEEN IMPLEMENTED.

- THIS LANDSCAPE PLAN CONFORMS WITH THE TREE-TO-FOUNDATION SETBACK, SOIL VOLUME, AND SURFACE-GRADING REQUIREMENTS OUTLINED IN THE CITY OF OTTAWA'S GUIDELINES FOR TREE PLANTING IN SENSITIVE MARINE CLAY SOILS (2017), BASED ON THE FINDINGS OUTLINED IN THE PROJECT GEOTECHNICAL REPORT.
- ADDITIONAL REQUIREMENTS OUTLINED IN THE CITY OF OTTAWA'S GUIDELINES FOR TREE PLANTING IN SENSITIVE MARINE CLAY SOILS (2017), INCLUDING USF DEPTH, FOUNDATION WALL REINFORCEMENT, AND SUBDIVISION GRADING, SHOULD BE CONFIRMED BY THE PROJECT ENGINEER(S).
- THE CONTRACTOR SHOULD REPORT ANY DISCREPANCIES TO THE CONTRACT ADMINISTRATOR BEFORE PLANTING TREES.
- CITY OF OTTAWA: GUIDELINES FOR TREE PLANTING IN SENSITIVE MARINE CLAY SOILS (2017): THE FOLLOWING GUIDELINES ARE PRIMARILY FOCUSED ON SMALL AND MEDIUM SIZE STREET TREES. HOWEVER, LARGE TREES (MATURE HEIGHT OVER 14M) CAN STILL BE PLANTED IN AREAS OF SMC SOILS PROVIDED A TREE TO FOUNDATION SETBACK EQUAL TO THE FULL MATURE HEIGHT OF THE TREE CAN BE PROVIDED (E.G. IN A PARK OR OTHER GREEN SPACE). FOR STREET TREES IN THE ROAD RIGHT-OF-WAY WHERE SMC SOILS HAVE BEEN IDENTIFIED, THE TREE TO FOUNDATION SETBACKS MAY BE REDUCED TO 4.5M FOR SMALL (MATURE TREE HEIGHT UP TO 7.5M) AND MEDIUM SIZE TREES (MATURE TREE HEIGHT 7.5M-14M) PROVIDED ALL OF THE FOLLOWING SIX CONDITIONS ARE MET:
 - THE MODIFIED PLASTICITY INDEX OF THE SOIL BETWEEN THE UNDERSIDE OF FOOTING (USF) AND A DEPTH OF 3.5M GENERALLY DOES NOT EXCEED 40%. THIS CORRESPONDS TO SOILS WITH LOW/MEDIUM

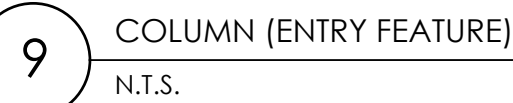
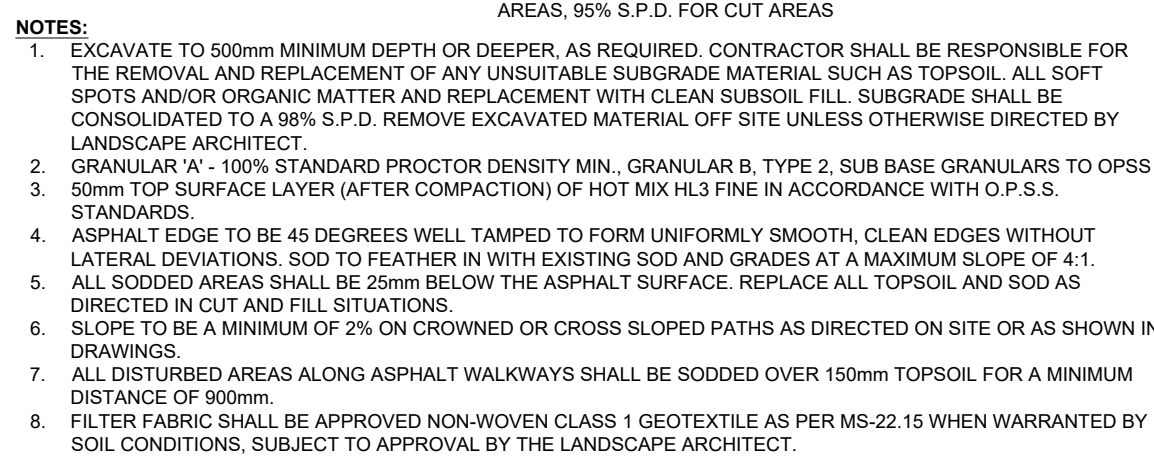
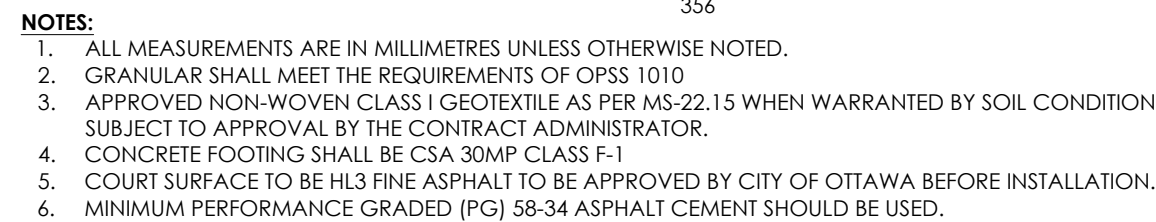
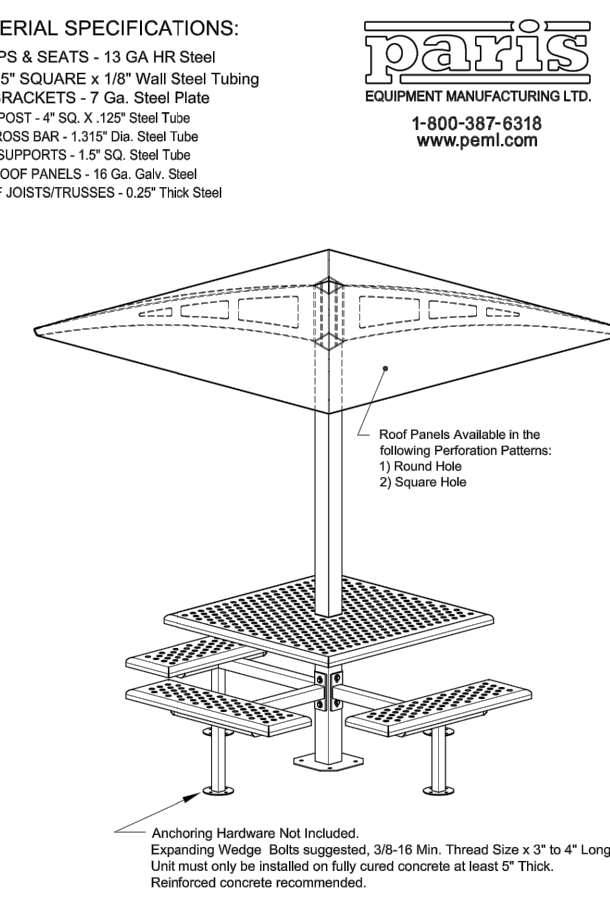
- POTENTIAL FOR SOIL VOLUME CHANGE. CLAY SOILS THAT EXCEED THE 40% PLASTICITY INDEX ARE CONSIDERED TO HAVE HIGH POTENTIAL FOR SOIL VOLUME CHANGE. FOR THESE WORST-CASE SOILS, THE SETBACKS AND TREE PLANTING RESTRICTIONS REMAIN UNCHANGED FROM THE 2005 CLAY SOILS POLICY (TREE SETBACK MUST EQUAL THE MATURE HEIGHT OF THE TREE - I.E. 7.5M SETBACK FOR SMALL TREES).
- THE USF IS 2.1M OR GREATER BELOW THE LOWEST FINISHED GRADE. NOTE: THIS FOOTING LEVEL MUST BE SATISFIED FOR FOOTINGS WITHIN 10M OF THE TREE, AS MEASURED FROM THE CENTRE OF THE TREE TRUNK, AND VERIFIED BY MEANS OF THE GRADING PLAN AS INDICATED IN THE PROCEDURAL CHANGES BELOW.
 - A SMALL SIZE TREE MUST BE PROVIDED WITH A MINIMUM OF 25M³ OF AVAILABLE SOIL VOLUME, AS DETERMINED BY A LANDSCAPE ARCHITECT. A MEDIUM SIZE TREE MUST BE PROVIDED WITH A MINIMUM OF 30M³ OF AVAILABLE SOIL VOLUME, AS DETERMINED BY A LANDSCAPE ARCHITECT. THE DEVELOPER WILL ENSURE THE SOIL IS GENERALLY UNCOMPACTED WHEN BACKFILLING IN STREET TREE PLANTING LOCATIONS.
 - THE SOIL VOLUME CALCULATION MUST BE BASED ON A DEPTH OF 1.5M BELOW FINISHED GRADE (E.G. 5M LENGTH X 4M WIDTH AT SURFACE X 1.5M DEPTH = 30M³). IT MAY INCLUDE LANDS IN THE RIGHT-OF-WAY AND ON PRIVATE PROPERTY, BUT MUST SUBTRACT THE VOLUME OF SHALLOW UTILITY TRENCHES (I.E. VOLUME OF SHALLOW UTILITY TRENCHES CANNOT COUNT TOWARDS MINIMUM SOIL VOLUME).
 - THE TREE SPECIES MUST BE SMALL TO MEDIUM SIZE, AS CONFIRMED BY A LANDSCAPE ARCHITECT IN THE LANDSCAPE PLAN.
 - THE FOUNDATION WALLS ARE TO BE REINFORCED AT LEAST NOMINALLY (MINIMUM OF TWO UPPER AND TWO LOWER 15M BARS IN THE FOUNDATION WALL) TO PROVIDE DUCTILITY AS DESCRIBED IN THE GEOTECHNICAL REPORT.
 - GRADING SURROUNDING THE TREE MUST PROMOTE DRAINING TO THE TREE ROOT ZONE (IN SUCH A MANNER AS NOT TO BE DETRIMENTAL TO THE TREE), AS NOTED ON THE SUBDIVISION GRADING PLAN.

PLANT LIST - STREET TREES


KEY	QTY.	BOTANICAL NAME	COMMON NAME	CAL/HT. (mm)	ROOT
MEDIUM DECIDUOUS STREET TREES					
7.5m TO 15m MATURE HEIGHT					
AR	8	ACER RUBRUM 'AUTUMN SPIRE'	AUTUMN SPIRE MAPLE	60	B&B
CS	6	CATALPA SPECIOSA	NORTHERN CATALPA	60	B&B
CO	10	CELTIS OCCIDENTALIS	HACKBERRY	60	B&B
CC	6	CORYLUS COLUMNA	TURKISH HAZEL	60	B&B
GB	8	GINKGO BILOBA 'AUTUMN GOLD'	AUTUMN GOLD GINKGO	60	B&B
GS	2	GLEDTISIA TRIACANTHOS VAR. INERMIS HALKA	HALKA HONEYLOCUST	60	B&B
TC	5	ILIX CORDATA 'CORINTHIAN'	CORINTHIAN LINDEN	60	B&B
	45				
SMALL DECIDUOUS STREET TREES					
>7.5m MATURE HEIGHT					
MS	3	MALUS 'SNOWDRIFT'	SNOWDRIFT CRAB APPLE	60	B&B
CONIFEROUS TREES					
PF	3	PINUS STROBUS 'FASTIGIATA'	COLUMNAR WHITE PINE	200cm	B&B
DECIDUOUS SHRUBS (TREE FORM)					
AC	36	AMELANCHIER CANADENSIS	SERVICEBERRY (TREE FORM)	50mm CAL.	
AI	46	AMELANCHIER LAEVIS	ALLEGHENY SERVICEBERRY (TREE FORM)	50mm CAL.	
Ca	44	CORNUS ALTERNIFOLIA	PAGODA DOGWOOD (TREE FORM)	50mm CAL.	
VI	39	VIBURNUM LENTAGO	NANNYBERRY (TREE FORM)	50mm CAL.	
	165				



ITEM NO.	DESCRIPTION	PART NO.	QTY.
1	60" Post for SPS-SPX-Road, Surface Mount	301-714	1
2	48" Square Table Top, Round Post, with 4" P Post Hole	302-647	1
3	SEAT ARM, PEDESTAL Table, with 4" P Post Hole	301-737/304-135	3
4	40" Seat, Round Hole Pattern	302-642	3
5	Single Post Shade Table General Hardware Bag	600-156	1
6	Cross Bar Support for SPS Shade Table	112-837	4
7	Table Top Support for SPS Shade Table		1
8	Join for SPS Shade Table	302-659	4
9	Roof Panel, Round Hole, for SPS Shade Table	301-232	4
10	Arm Mounting Plate, for SPS Shade Table	301-462	1



Key Plan



3	Issued for 1st Submission	Dec. 14/20
2	Issued for Client Review	Nov. 20/20
1	Issued for Client Review	Aug. 12/20
No.	Description	Date

Revision _____
 City Approval Stamp _____



NAK 
design strategies

1285 WELLINGTON STREET WEST, OTTAWA, ON K1Y 3A8 CANADA
T 613.237.2345 F 613.237.6423 NAKDESIGNSTRATEGIES.COM

TRAILSEDGE RENTAL BLOCKS
193 & 194 SITE PLAN
OTTAWA, ON

Title

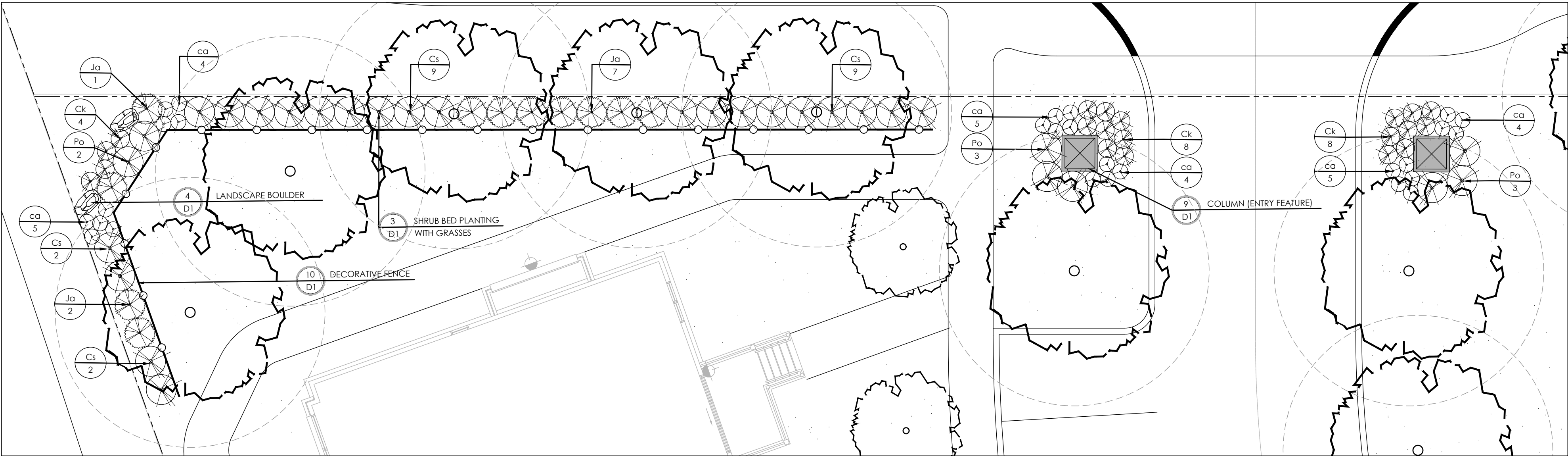
DETAILS

Date DECEM
Scale N.T.S.
Drawn Is
Checked jh
Job No. 20-135

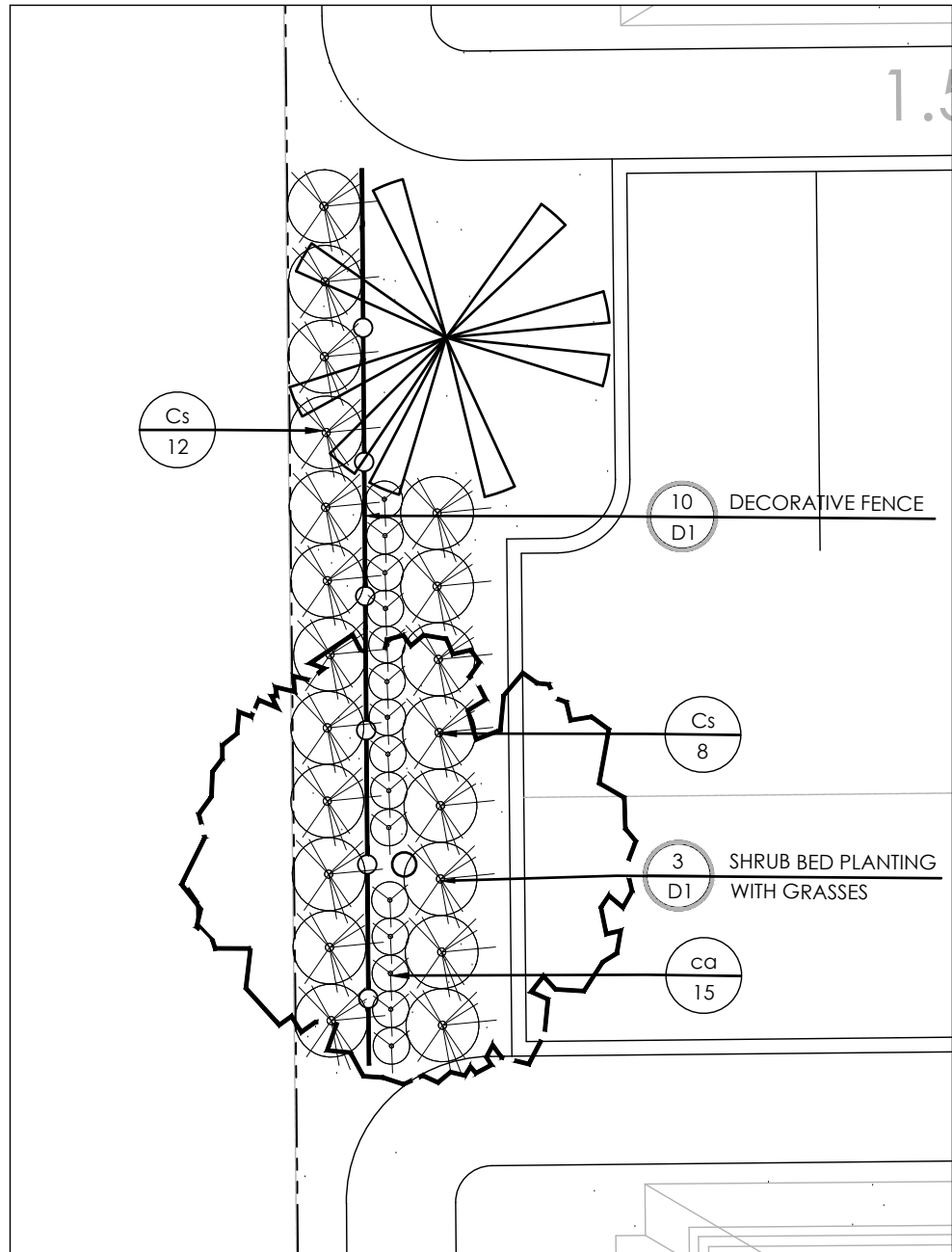
Sheet

D1

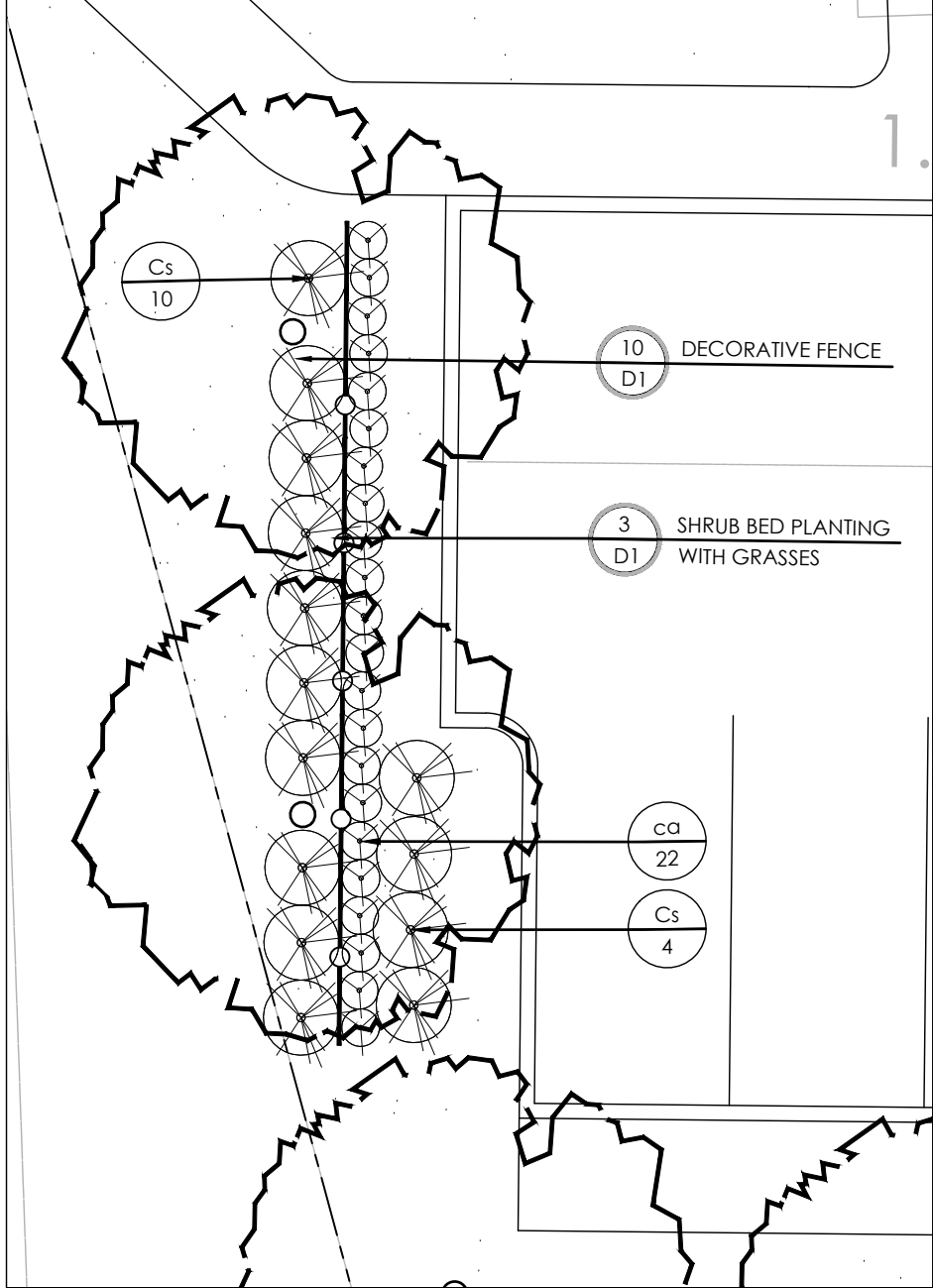
PLANT LIST				
KEY	QTY.	BOTANICAL NAME	COMMON NAME	CAL/HT. ROOT (mm)
DECIDUOUS SHRUBS				
Ck	55	CORNUS SERICEA 'KELSEY'	KELSEY DOGWOOD	3 GAL.
Cs	56	CORNUS SERICEA 'FARROW'	ARCTIC FIRE DOGWOOD	3 GAL.
Po	37	PHYSCARPUS OPIULIFOLIUS 'DART'S GOLD'	DART'S GOLD NINEBARK	3 GAL.
CONIFEROUS SHRUBS				
Ja	28	JUNIPERUS SABINA	SAVIN JUNIPER	3 GAL.
GRASSES				
ca	199	CALAMAGROSTIS X ACUTIFLORA 'KARL FOERSTER'	KARL FOERSTER REED GRASS	2 GAL.



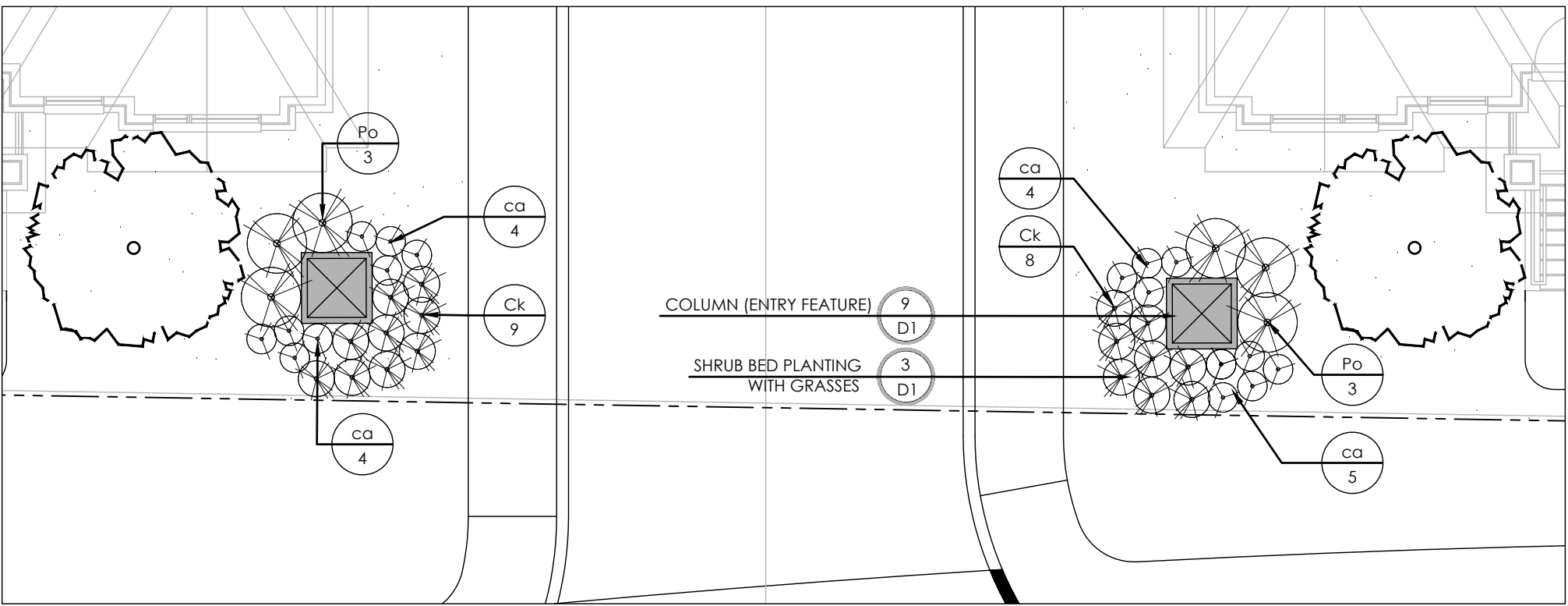
1 STREET 23 GATEWAY PLANTING
1:100



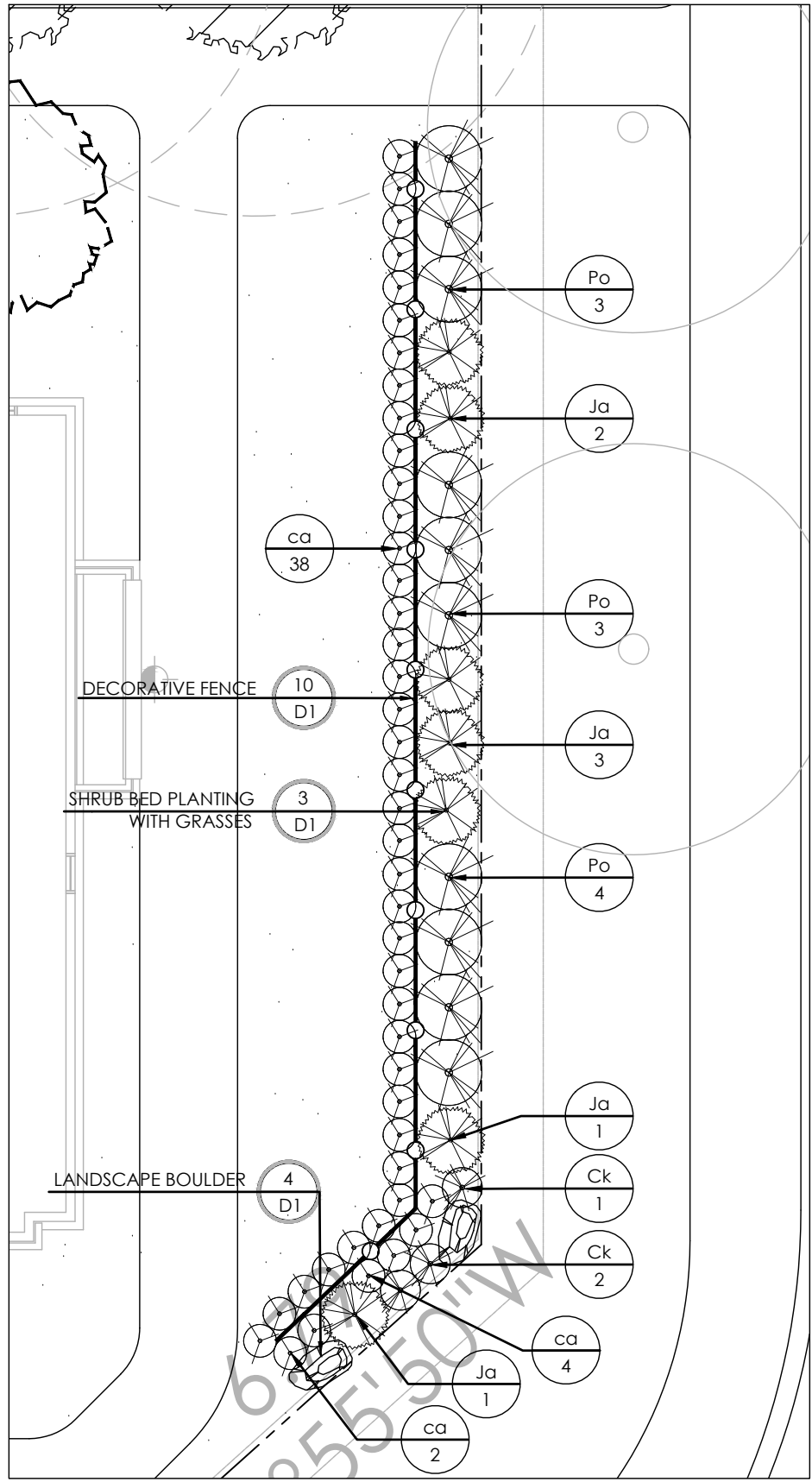
2 BRIAN COBURN PLANTING - EAST
1:100



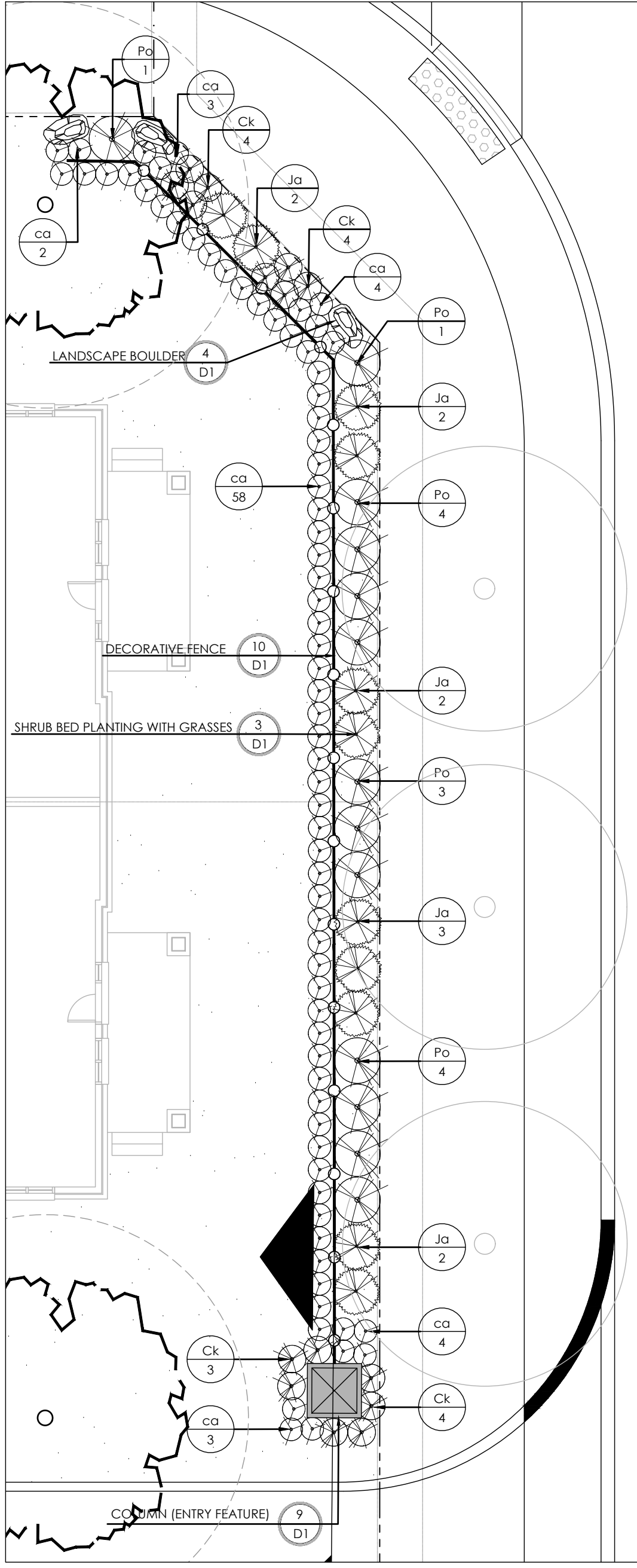
3 BRIAN COBURN PLANTING - WEST
1:100



4 FERN CASEY STREET GATEWAY PLANTING
1:100

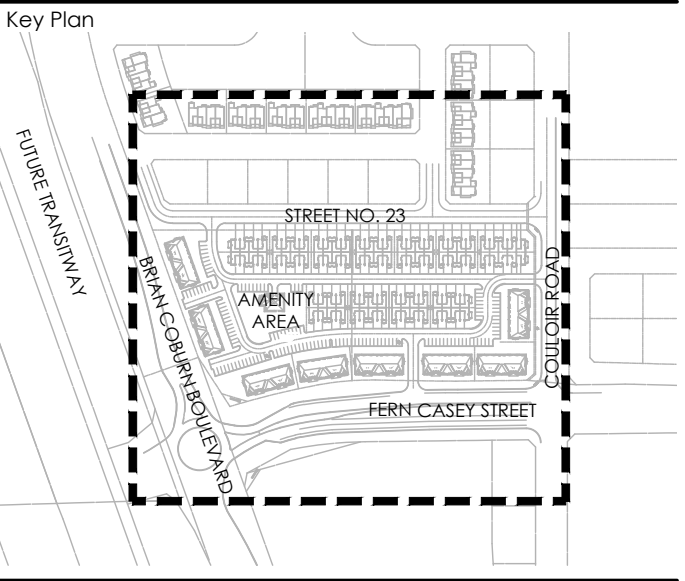


5 COULOIR ROAD PLANTING - WEST
1:100



6 COULOIR ROAD PLANTING - EAST
1:100

Contractor shall check all dimensions on the work and report any discrepancy to the Landscape Architect before proceeding. All drawings and specifications are the property of the Landscape Architect and must be returned at the completion of the work. This drawing is not to be used for construction until signed by the Landscape Architect.



LEGEND	
PROPERTY LINE	
FENCING	
DECORATIVE FENCE	
GATEWAY COLUMN	
PLANTING	
EXISTING STREET TREE	
MEDIUM DECIDUOUS TREE (7.5m TO 14m HEIGHT)	
SMALL TREE (<7.5m HEIGHT)	
SHRUB (TREE FORM)	
CONIFEROUS STREET TREE	
DECIDUOUS SHRUB	
CONIFEROUS SHRUB	
ORNAMENTAL GRASSES	
LANDSCAPE BOULDER	
SODDING	
PLANTING BED	
SURFACING	
C.I.P. CONCRETE	
ASPHALT PAVING	
PICKLEBALL COURT SURFACE	
AMENITIES	
UMBRELLA SHADE SHELTER	
CONCRETE PING PONG TABLE	
BASKETBALL KEY AND HOOP	

3	Issued for 1st Submission	Dec. 14/20
2	Issued for Client Review	Nov. 20/20
1	Issued for Client Review	Aug. 12/20
No.	Description	Date
Revision		
City Approval Stamp		



NAK
design strategies

1285 WELLINGTON STREET WEST, OTTAWA, ON K1Y 3A8 CANADA
T 413.237.2345 F 413.237.4423 NAKDESIGNSTRATEGIES.COM

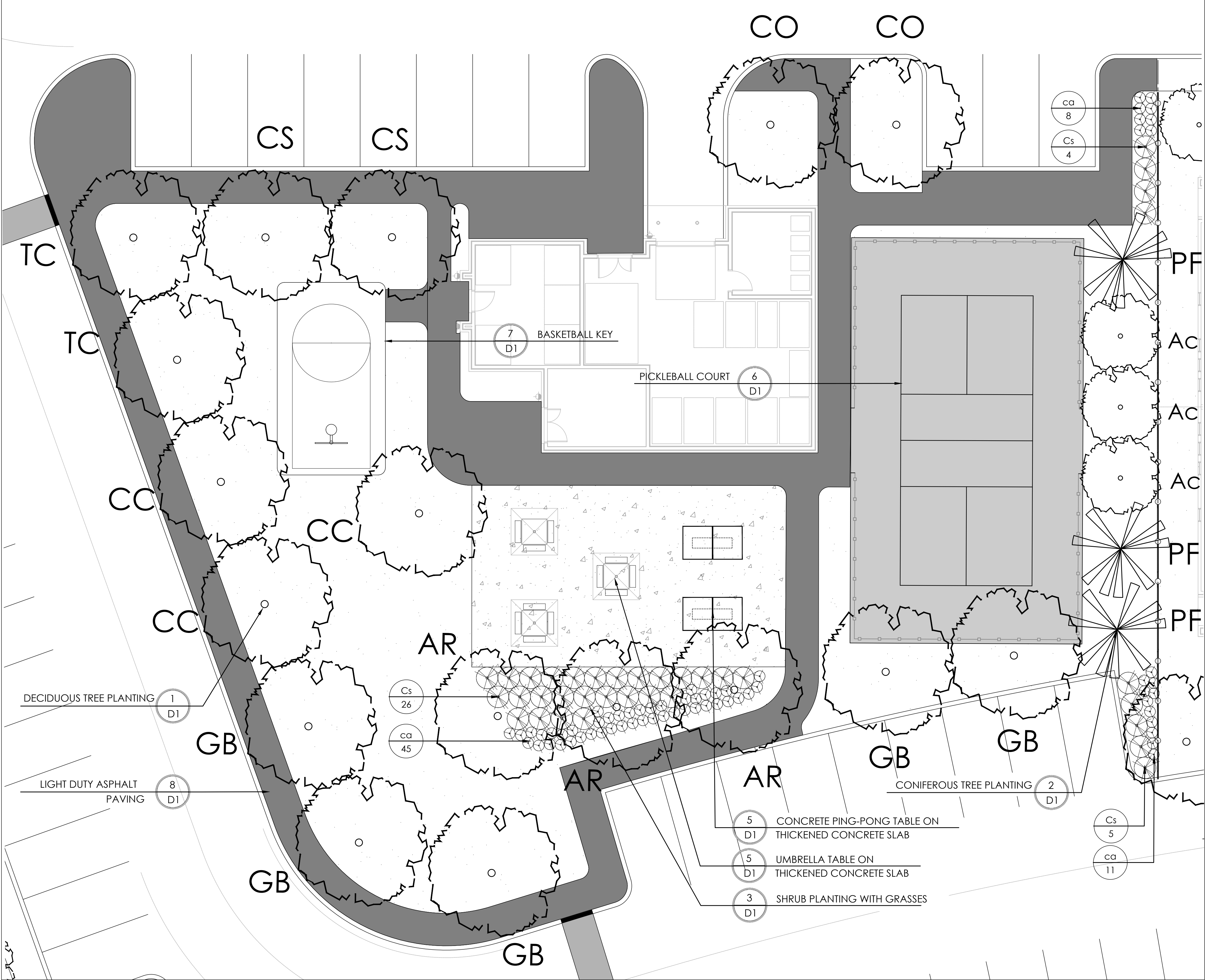
TrailSedge Rental Blocks
193 & 194 Site Plan
Ottawa, ON

Title
DETAILS

Date	DECEMBER 2020	Sheet
Scale	1:100	
Drawn	is	
Checked	jh	
Job No.	20-135	

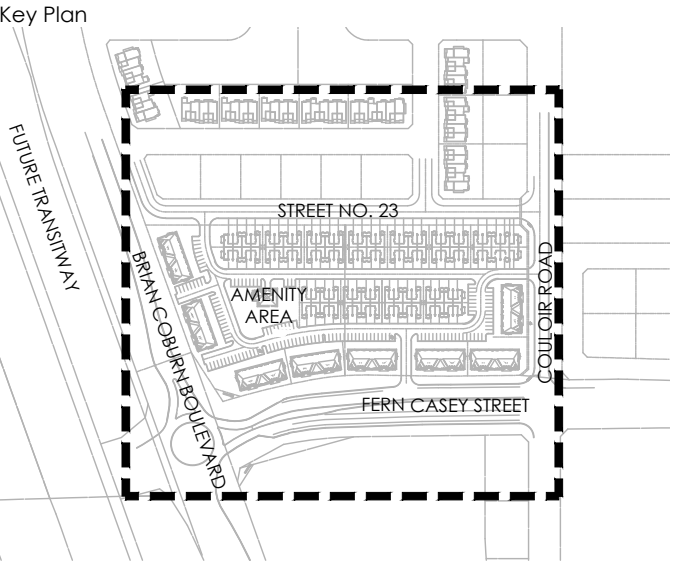
PLANT LIST-AMENITY AREA

KEY	QTY.	BOTANICAL NAME	COMMON NAME	CAL/HT. (mm)	ROOT
MEDIUM DECIDUOUS TREES					
7.5m TO 15m MATURE HEIGHT					
AR	3	ACER RUBRUM 'AUTUMN SPIRE'	AUTUMN SPIRE MAPLE	60	8&8
CS	2	CATALPA SPECIOSA	NORTHERN CATALPA	60	8&8
CO	2	CELTIS OCCIDENTALIS	HACKBERRY	60	8&8
CC	3	CORYLUS COLUMNNA	TURKISH HAZEL	60	8&8
GB	5	GINKGO BILOBA 'AUTUMN GOLD'	AUTUMN GOLD GINKGO	60	8&8
TC	2	TILIA CORDATA 'CORINTHIAN'	CORINTHIAN LINDEN	60	8&8
	17				
CONIFEROUS TREES					
PF	3	PINUS STROBUS 'FASTIGIATA'	COLUMNAR WHITE PINE	200cm	8&8
	3				
DECIDUOUS SHRUBS					
AC	3	AMELANCHIER CANADENSIS	SERVICEBERRY (TREE FORM)	50mm CAL.	
CS	35	CORNUS SERICEA 'FARROW'	ARCTIC FIRE DOGWOOD	3 GAL.	
	38				
GRASSES					
ca	64	CALAMAGROSTIS X ACUTIFLORA 'KARL FOERSTER'	KARL FOERSTER REED GRASS	2 GAL.	
	64				



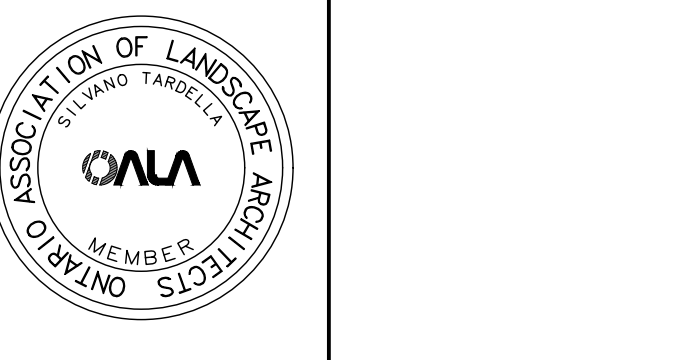
1 AMENITY AREA
1:100

Contractor shall check all dimensions on the work and report any discrepancy to the Landscape Architect before proceeding. All drawings and specifications are the property of the Landscape Architect and must be returned at the completion of the work. This drawing is not to be used for construction until signed by the Landscape Architect.



LEGEND	
---	PROPERTY LINE
---	FENCING
---	DECORATIVE FENCE
■	GATEWAY COLUMN
PLANTING	
+	EXISTING STREET TREE
○	MEDIUM DECIDUOUS TREE (7.5m TO 14m HEIGHT)
○	SMALL TREE (<7.5m HEIGHT)
○	SHRUB (TREE FORM)
✱	CONIFEROUS STREET TREE
○	DECIDUOUS SHRUB
○	CONIFEROUS SHRUB
○	ORNAMENTAL GRASSES
○	LANDSCAPE BOULDER
■	SODDING
■	PLANTING BED
SURFACING	
■	C.I.P. CONCRETE
■	ASPHALT PAVING
■	PICKLEBALL COURT SURFACE
AMENITIES	
■	UMBRELLA SHADE SHELTER
■	CONCRETE PING PONG TABLE
■	BASKETBALL KEY AND HOOP

1	Issued for 1st Submission	Dec. 14/20
2	Issued for Client Review	Nov. 20/20
1	Issued for Client Review	Aug. 12/20
No.	Description	Date
Revision		
City Approval Stamp		



NAK
design strategies

1285 WELLINGTON STREET WEST, OTTAWA, ON K1Y 3A8 CANADA
T 613.237.2345 F 613.237.4423 NAKDESIGNSTRATEGIES.COM

Project

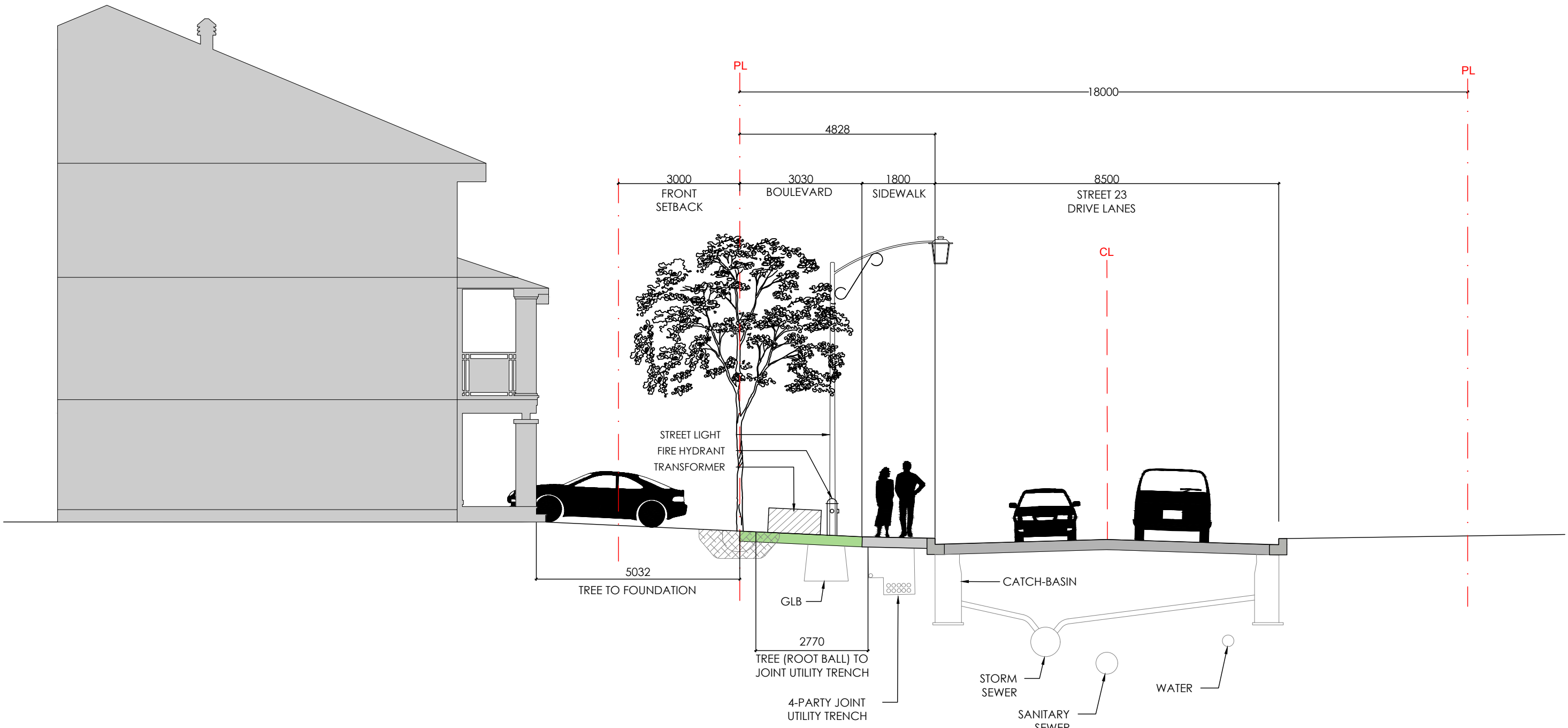
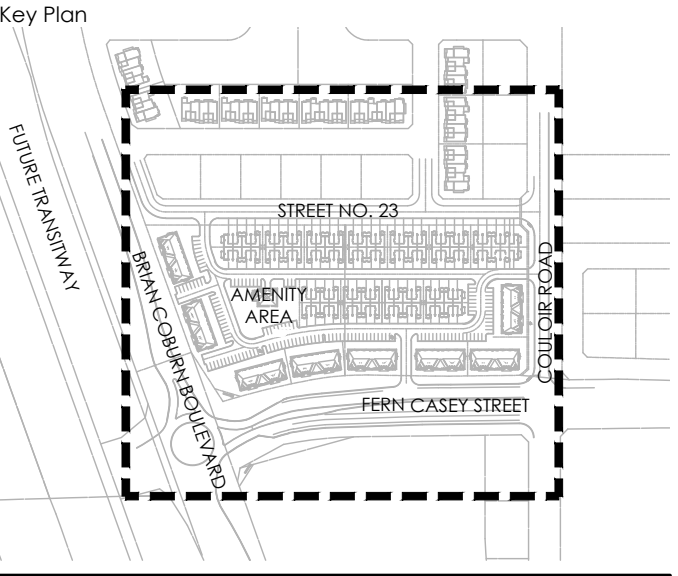
TRAILEDGE RENTAL BLOCKS
193 & 194 SITE PLAN
OTTAWA, ON

Title

DETAILS

Date	DECEMBER 2020	Sheet
Scale	1:100	
Drawn	is	
Checked	jh	
Job No.	20-135	

Contractor shall check all dimensions on the work and report any discrepancy to the Landscape Architect before proceeding. All drawings and specifications are the property of the Landscape Architect and must be returned at the completion of the work. This drawing is not to be used for construction until signed by the Landscape Architect.



1 STREET 23 CROSS SECTION
1:100

No.	Description	Date
3	Issued for 1st Submission	Dec. 14/20
2	Issued for Client Review	Nov. 20/20
1	Issued for Client Review	Aug. 12/20
Revision		
City Approval Stamp		



NAK
design strategies

1285 WELLINGTON STREET WEST, OTTAWA, ON K1Y 3A8 CANADA
T 613.237.2345 F 613.237.4423 NAKDESIGNSTRATEGIES.COM

Project

TRAILSEDGE RENTAL BLOCKS
193 & 194 SITE PLAN
OTTAWA, ON

Title	
CROSS SECTION	
Date	DECEMBER 2020
Scale	1:100
Drawn	is
Checked	jh
Job No.	20-135
Sheet	D4