

Copyright Reserved

The Contractor shall verify and be responsible for all dimensions. DO NOT scale the drawing - any errors or omissions shall be reported to Stantec without delay.  
The Copyrights to all designs and drawings are the property of Stantec. Reproduction or use for any purpose other than that authorized by Stantec is forbidden.

Legend

- PROPOSED SILT FENCE BOUNDARY AS PER OPSD 219.110
- PROPOSED STRAW BALE LOCATION AS PER OPSD 219.100
- PROPOSED CATCH BASIN PROTECTION AS PER DETAIL
- PROPOSED MUD MAT LOCATION
- EXISTING SWALE
- PROPOSED VALVE BOX
- PROPOSED VALVE CHAMBER
- PROPOSED FIRE HYDRANT
- PROPOSED SANITARY SEWER MANHOLE
- PROPOSED STORM SEWER MANHOLE
- PROPOSED CATCHBASIN

Best Management Practices

CONTRACTOR TO PROVIDE EROSION AND SEDIMENT CONTROLS (BEST MANAGEMENT PRACTICES) DURING CONSTRUCTION OF THIS PROJECT.

EROSION MUST BE MINIMIZED AND SEDIMENTS MUST BE REMOVED FROM CONSTRUCTION SITE RUN-OFF IN ORDER TO PROTECT DOWNSTREAM AREAS. DURING ALL CONSTRUCTION, EROSION AND SEDIMENTATION SHOULD BE CONTROLLED BY THE FOLLOWING TECHNIQUES:

- LIMIT THE EXTENT OF EXPOSED SOILS AT ANY GIVEN TIME.
- REVEGETATE EXPOSED AREAS AND SLOPES AS SOON AS POSSIBLE.
- MINIMIZE AREA TO BE CLEARED AND GRUBBED.
- PROTECT EXPOSED SOILS WITH PLASTIC OR SYNTHETIC MULCHES.
- INSTALL CATCH BASIN INSERTS OR EQUIVALENT IN ALL PROPOSED CATCH BASINS AND CATCH-BASIN MANHOLES AND IN ALL EXISTING CATCH BASINS THAT WILL RECEIVE RUN-OFF FROM THE SITE.
- A SILT FENCE SHALL BE INSTALLED AROUND THE PERIMETER OF ALL AND ANY STOCKPILES OF MATERIAL TO BE USED OR REMOVED FROM SITE. (LOCATION TO BE DETERMINED)
- A VISUAL INSPECTION SHALL BE DONE DAILY ON SEDIMENT CONTROL MEASURES AND CLEANED OF ANY ACCUMULATED SILT AS REQUIRED. THE DEPOSITS WILL BE DISPOSED OFF SITE AS PER THE REQUIREMENTS OF THE CONTRACT.
- SEDIMENT CONTROL BARRIERS MAY ONLY BE REMOVED TEMPORARILY WITH APPROVAL OF CONTRACT ADMINISTRATOR TO ACCOMMODATE CONSTRUCTION OPERATIONS. ALL AFFECTED BARRIERS MUST BE REINSTITATED AT NIGHT WHEN CONSTRUCTION IS COMPLETED. NO REMOVAL WILL OCCUR IF THERE IS A SIGNIFICANT RAINFALL EVENT ANTICIPATED (>10mm) UNLESS A NEW DEVICE HAS BEEN INSTALLED TO PROTECT ANTI-STORM AND SANITARY SEWER SYSTEMS, OR DOWNSTREAM WATERCOURSES.
- NO REFUELING OR CLEANING OF EQUIPMENT IS PERMITTED NEAR ANY EXISTING WATERWAY.
- CONTRACTOR SHALL REMOVE SEDIMENT CONTROL MEASURES WHEN, IN THE OPINION OF THE CONTRACT ADMINISTRATOR, THE MEASURE(S) IS NO LONGER REQUIRED. NO CONTROL MEASURES SHALL BE PERMANENTLY REMOVED WITHOUT PRIOR WRITTEN AUTHORIZATION FROM THE CONTRACT ADMINISTRATOR.
- THE CONTRACTOR SHALL IMMEDIATELY REPORT TO THE ENGINEER ANY ACCIDENTAL DISCHARGES OF SEDIMENT MATERIAL INTO THE WATERCOURSE. APPROPRIATE RESPONSE MEASURES, INCLUDING ANY REPAIRS TO EXISTING CONTROL MEASURES OR THE IMPLEMENTATION OF ADDITIONAL CONTROL MEASURES, SHALL BE CARRIED OUT BY THE CONTRACTOR WITHOUT DELAY.
- CONTRACTOR SHALL INSTALL MUD MATS AT ENTRANCE TO THE SITE.
- STORMWATER SWALES TO BE COVERED WITH HYDRO-SEED AND MULCH.

1	ISSUED FOR SPA	JP	DT	20.12.16
Revision		By	Appd.	YY.MM.DD

File Name:	160401585-DB	JP	DT/SG	JP	20.11.06
		Dwn.	Chkd.	Dsgn.	YY.MM.DD

Permit-Seal

Client/Project

**RICHCRAFT GROUP OF COMPANIES**  
2280 ST. LAURENT BLVD

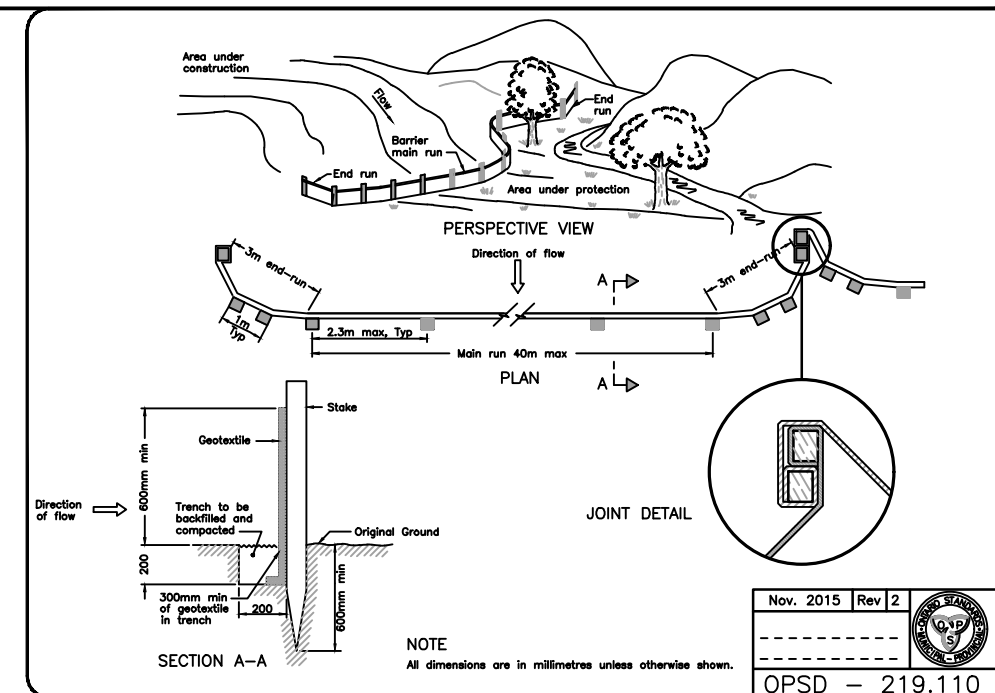
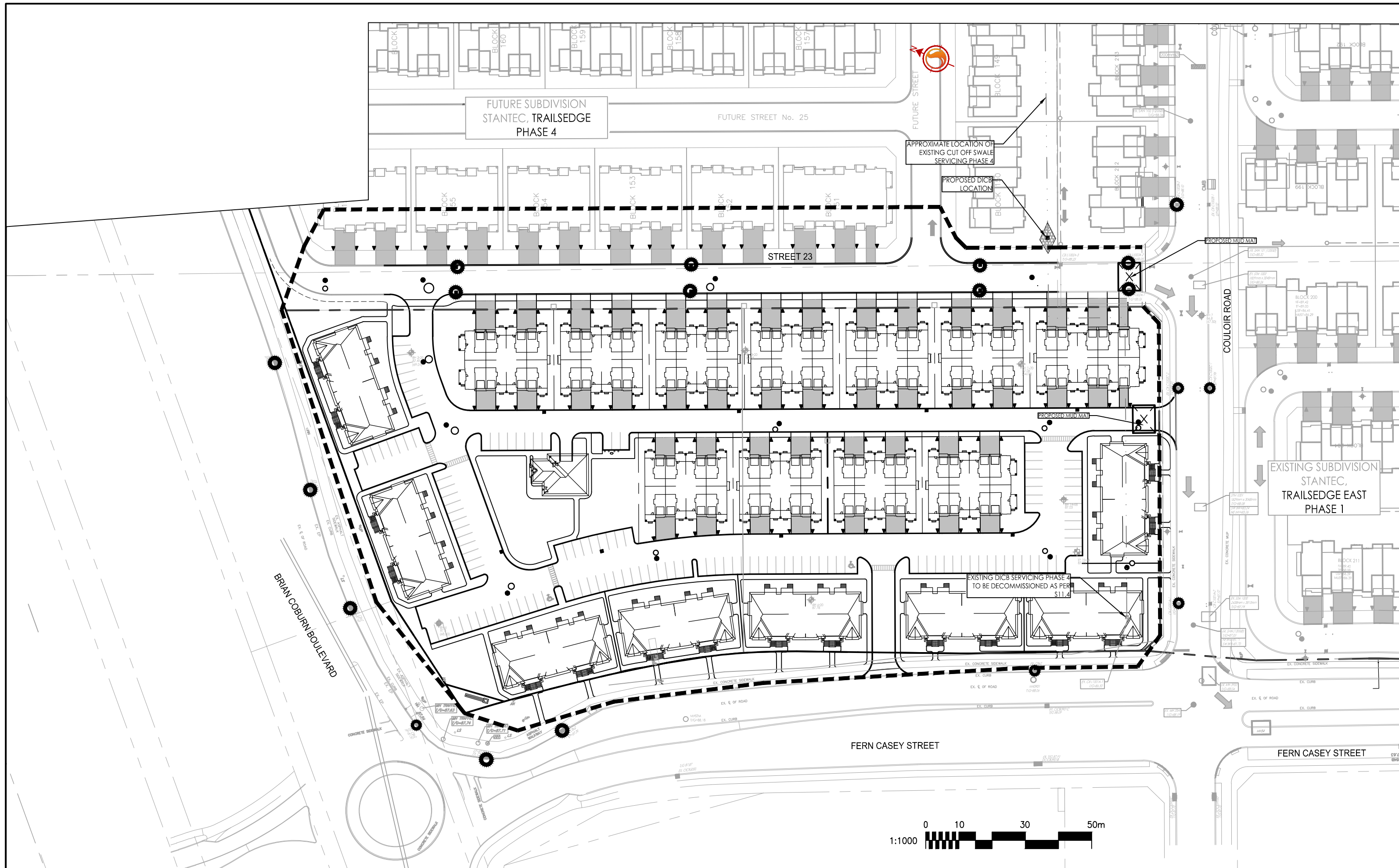
**PROPOSED RESIDENTIAL DEVELOPMENT**  
**TRAILSEDGE BLOCK 193 & 194**  
OTTAWA, ON

Title

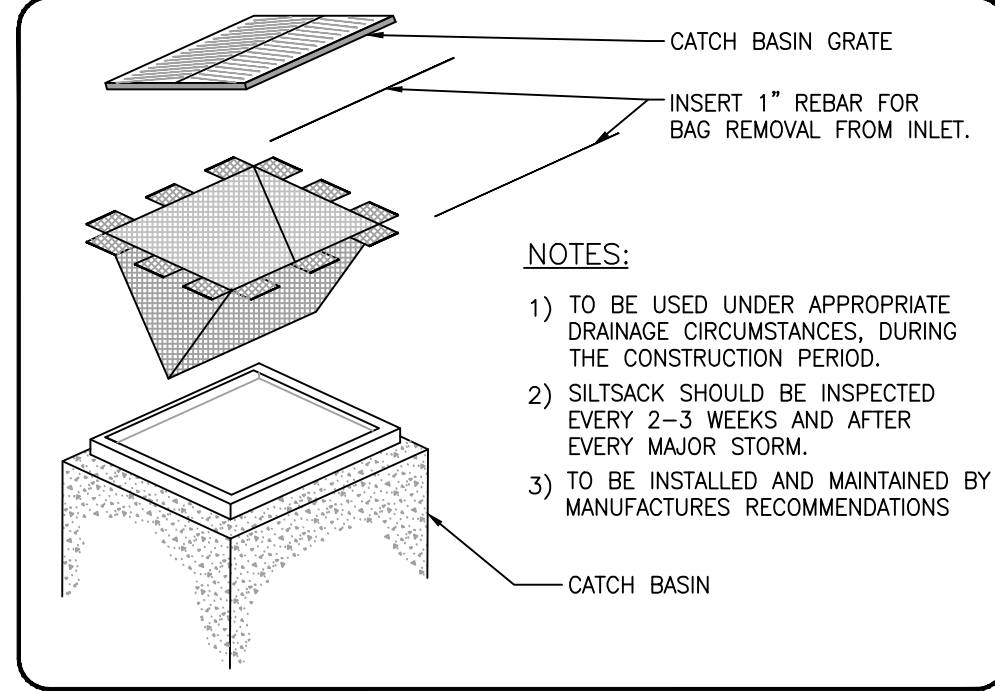
**EROSION CONTROL PLAN**  
**AND DETAILS SHEET**

Project No.	Scale
160401585	

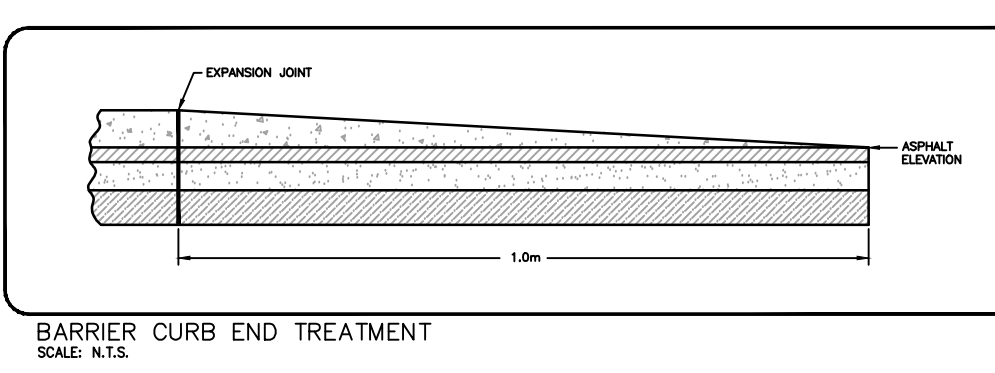
Drawing No.	Sheet	Revision
EC/DS-1	7 of 11	1



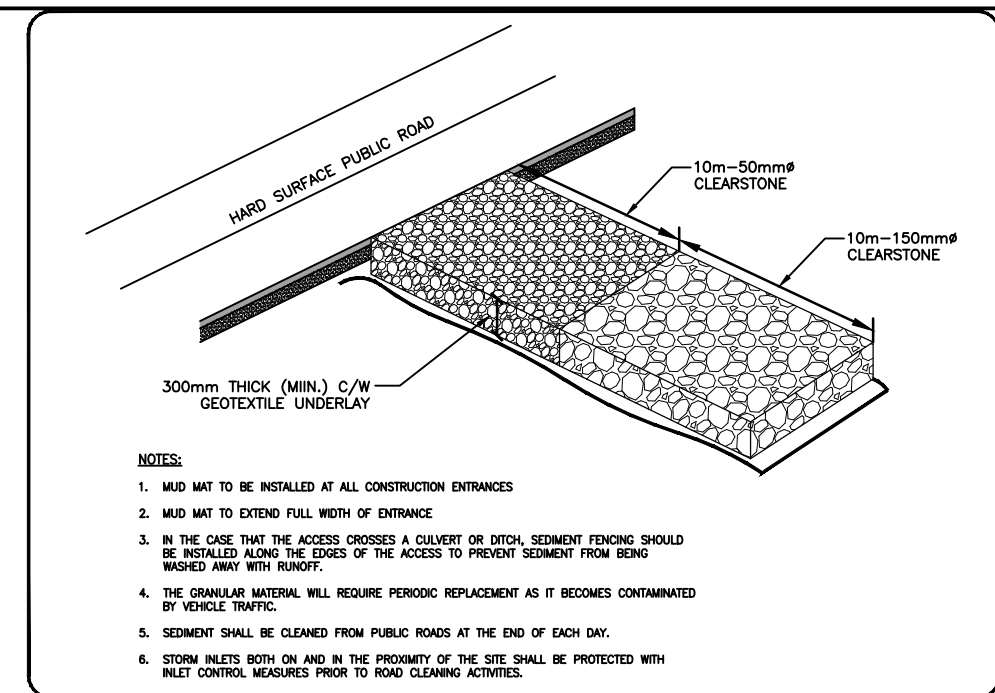
LIGHT DUTY SILT FENCE BARRIER  
SCALE: N.T.S.



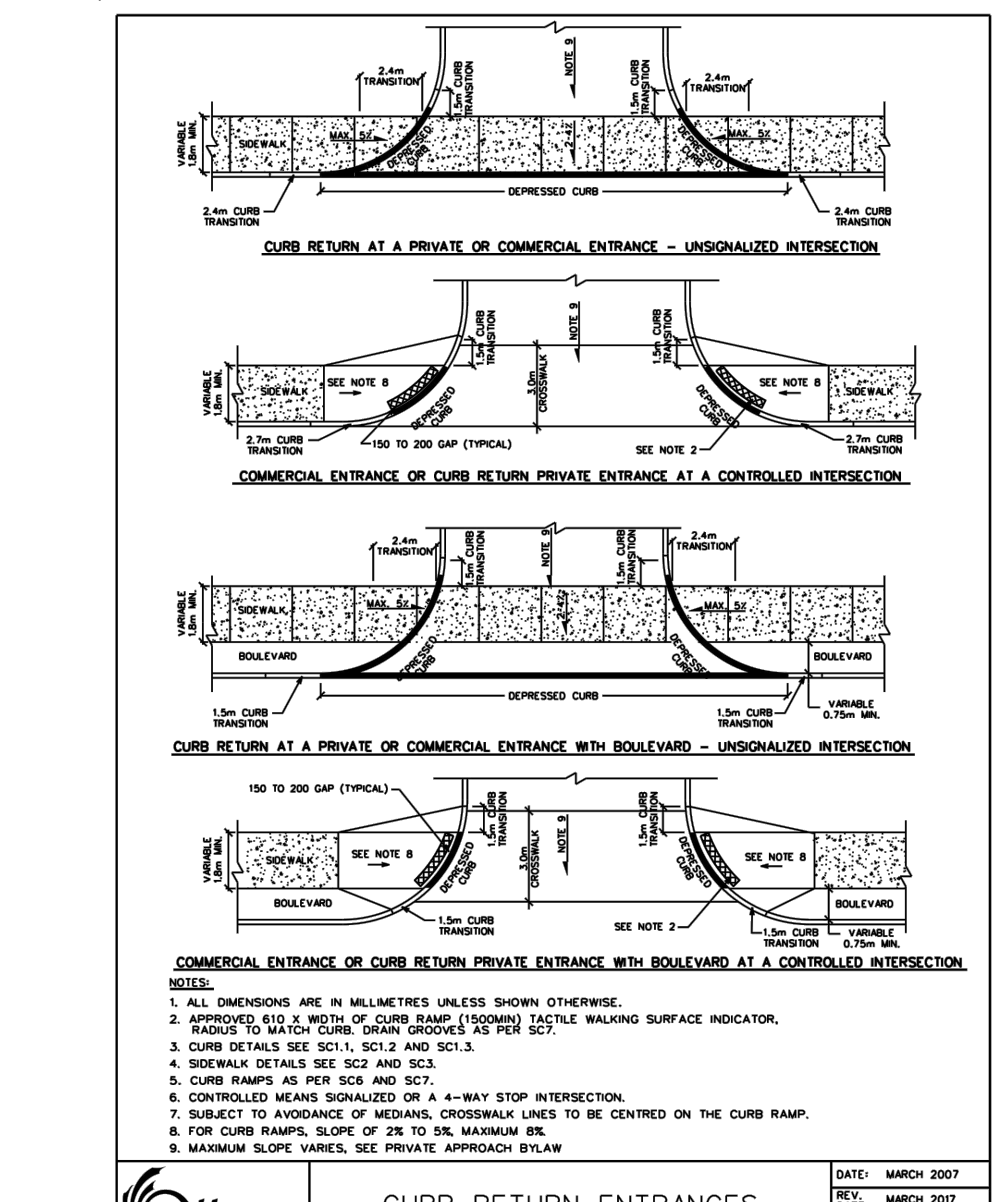
ROADSIDE CATCH BASIN PROTECTION DETAIL:  
TERRAFIX SILTSACK  
SCALE: N.T.S.



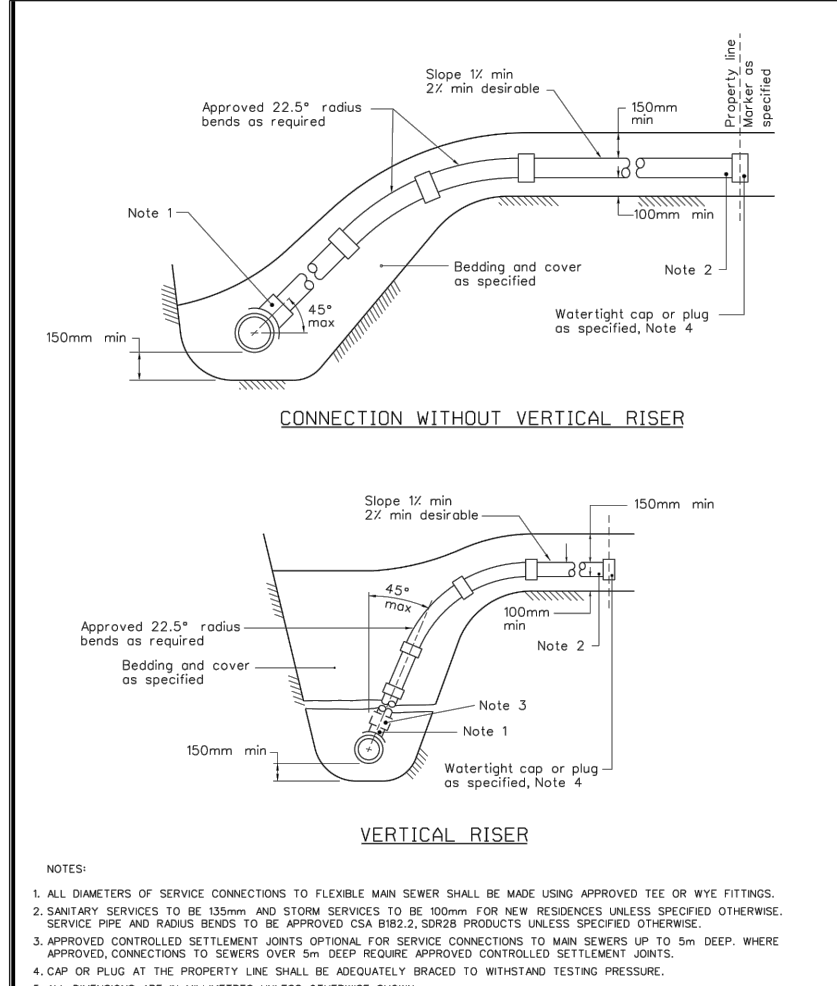
Barrier curb end treatment  
SCALE: N.T.S.



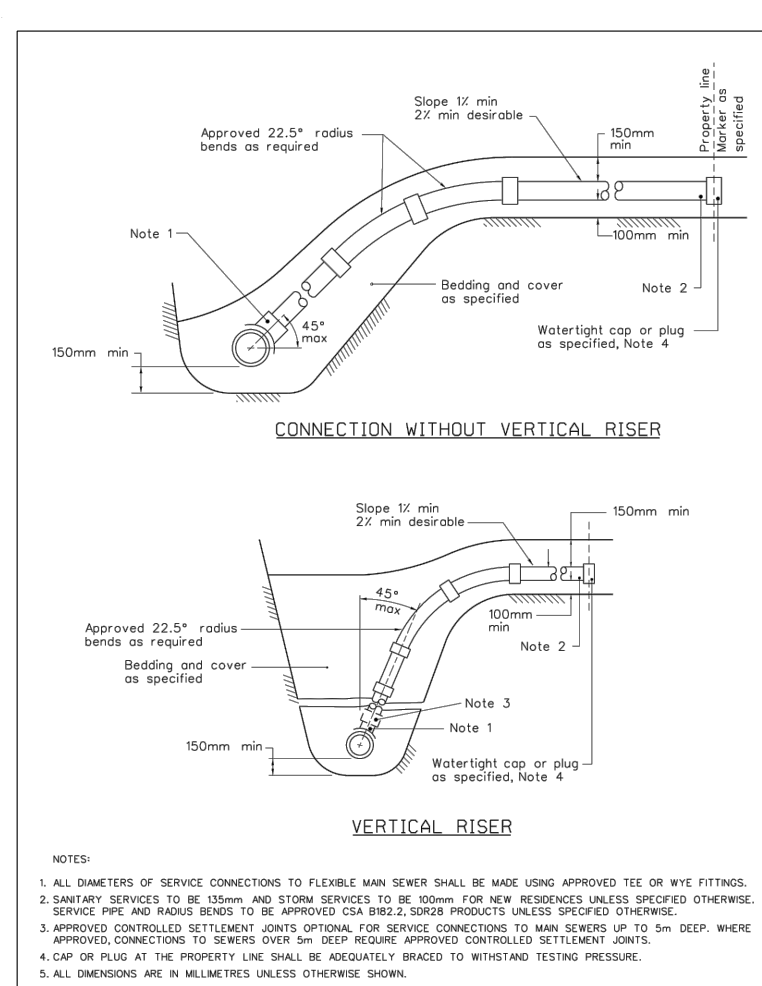
MUD MAT ENTRANCE DETAIL  
SCALE: N.T.S.



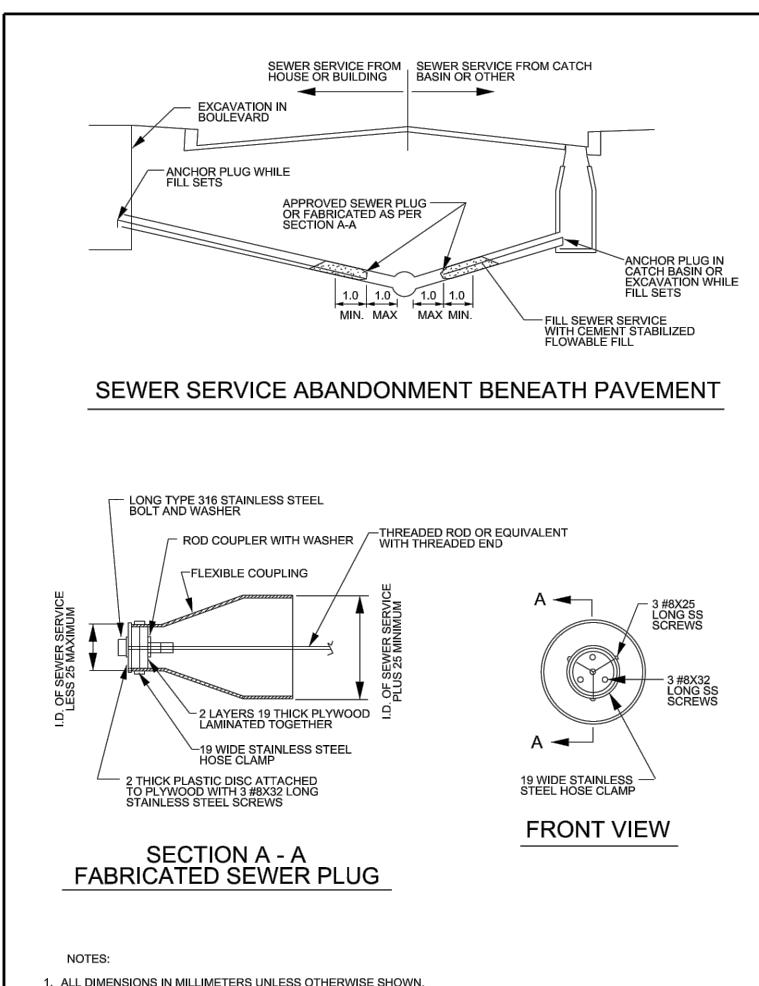
CURB RETURN ENTRANCES  
SCALE: N.T.S.



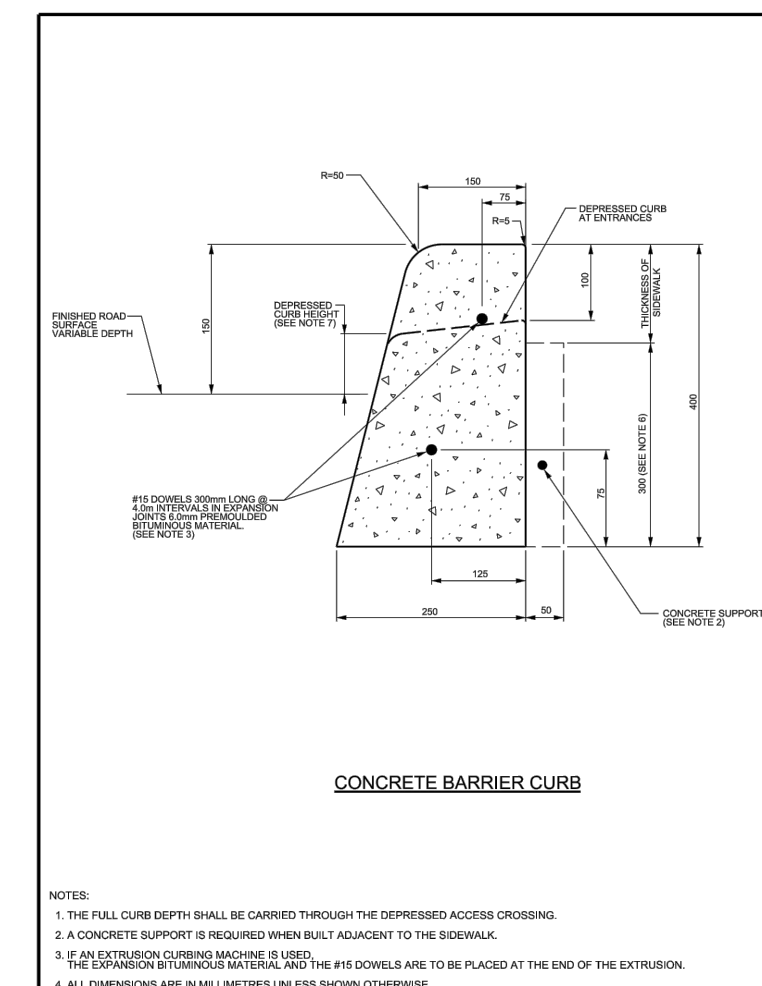
SEWER SERVICE CONNECTIONS  
FOR FLEXIBLE MAIN SEWER PIPE  
(MODIFIED OPSD-1006.020)



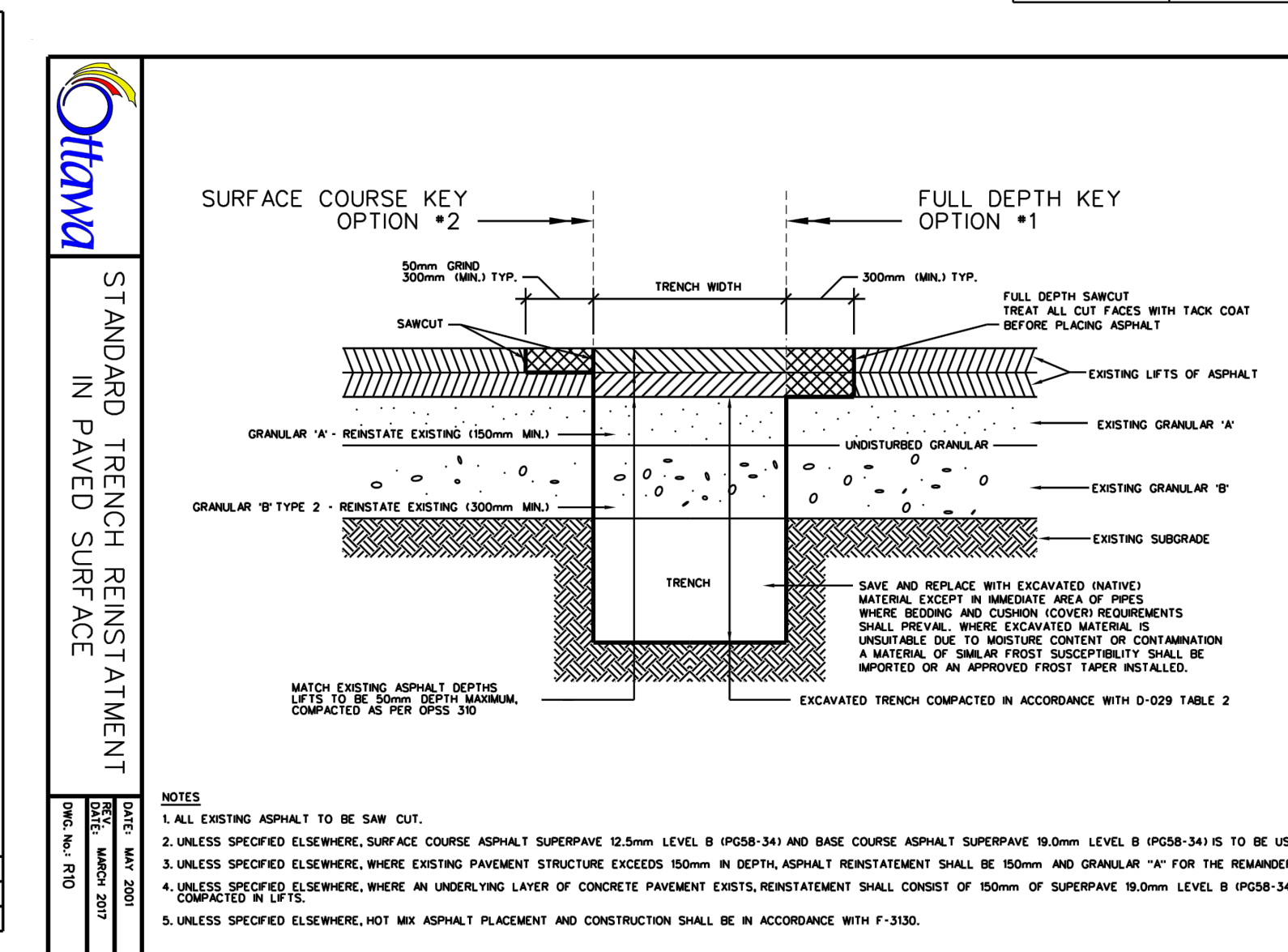
SEWER SERVICE CONNECTIONS  
FOR FLEXIBLE MAIN SEWER PIPE  
(MODIFIED OPSD-1006.020)



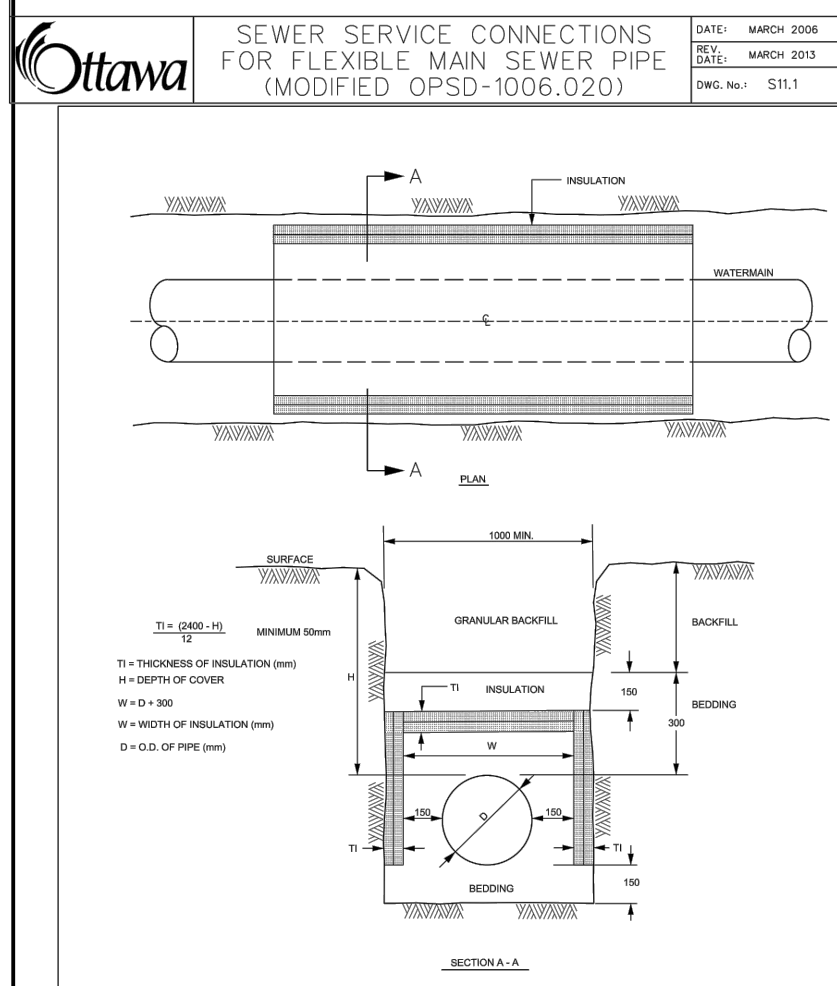
SEWER SERVICE  
ABANDONMENT BENEATH  
PAVEMENT



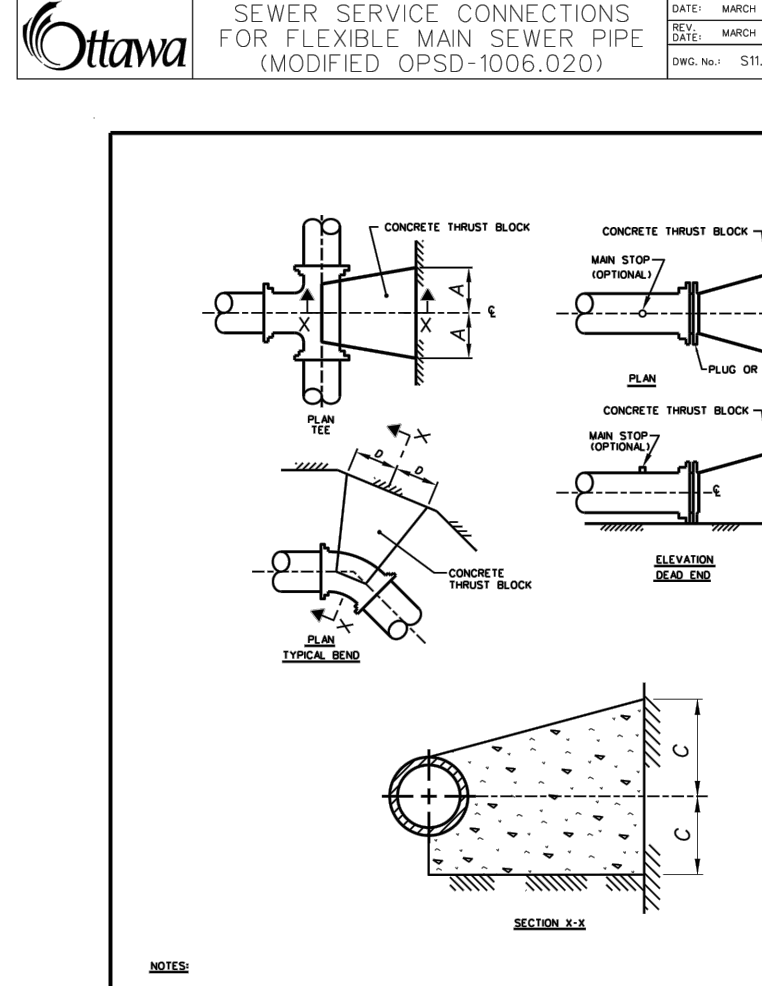
CONCRETE BARRIER CURB  
FOR GRANULAR BASE PAVEMENT  
(MODIFIED OPSD-600.110)



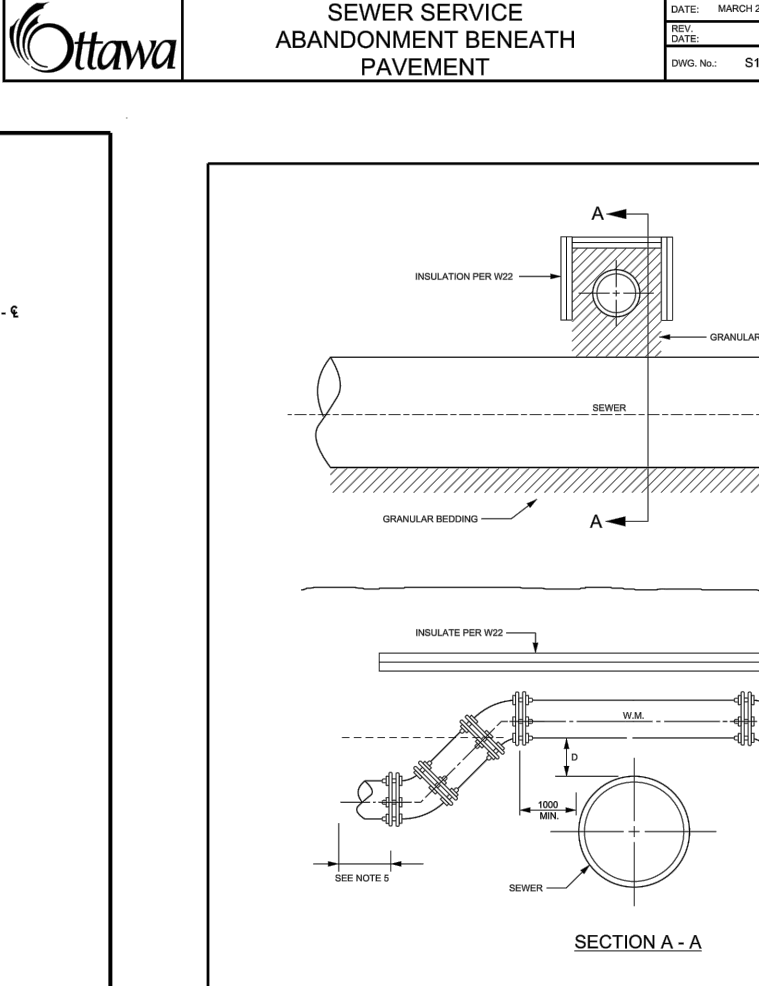
STANDARD TRENCH REINSTATEMENT  
IN PAVED SURFACE



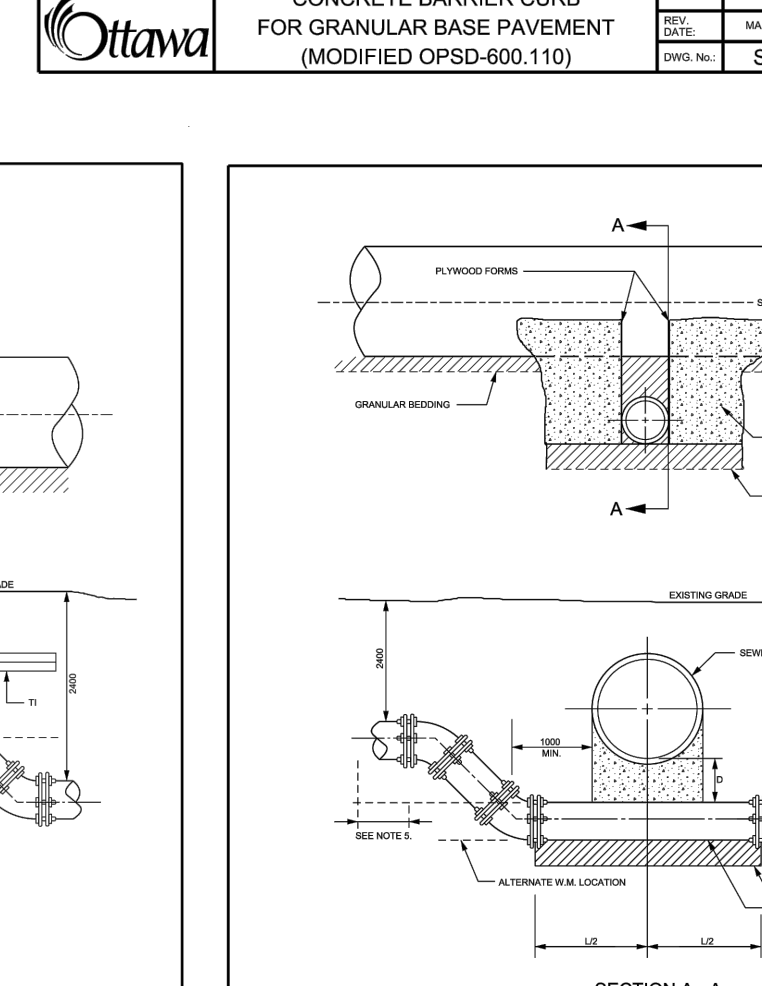
THERMAL INSULATION FOR  
WATERMAINS IN SHALLOW  
TRENCHES



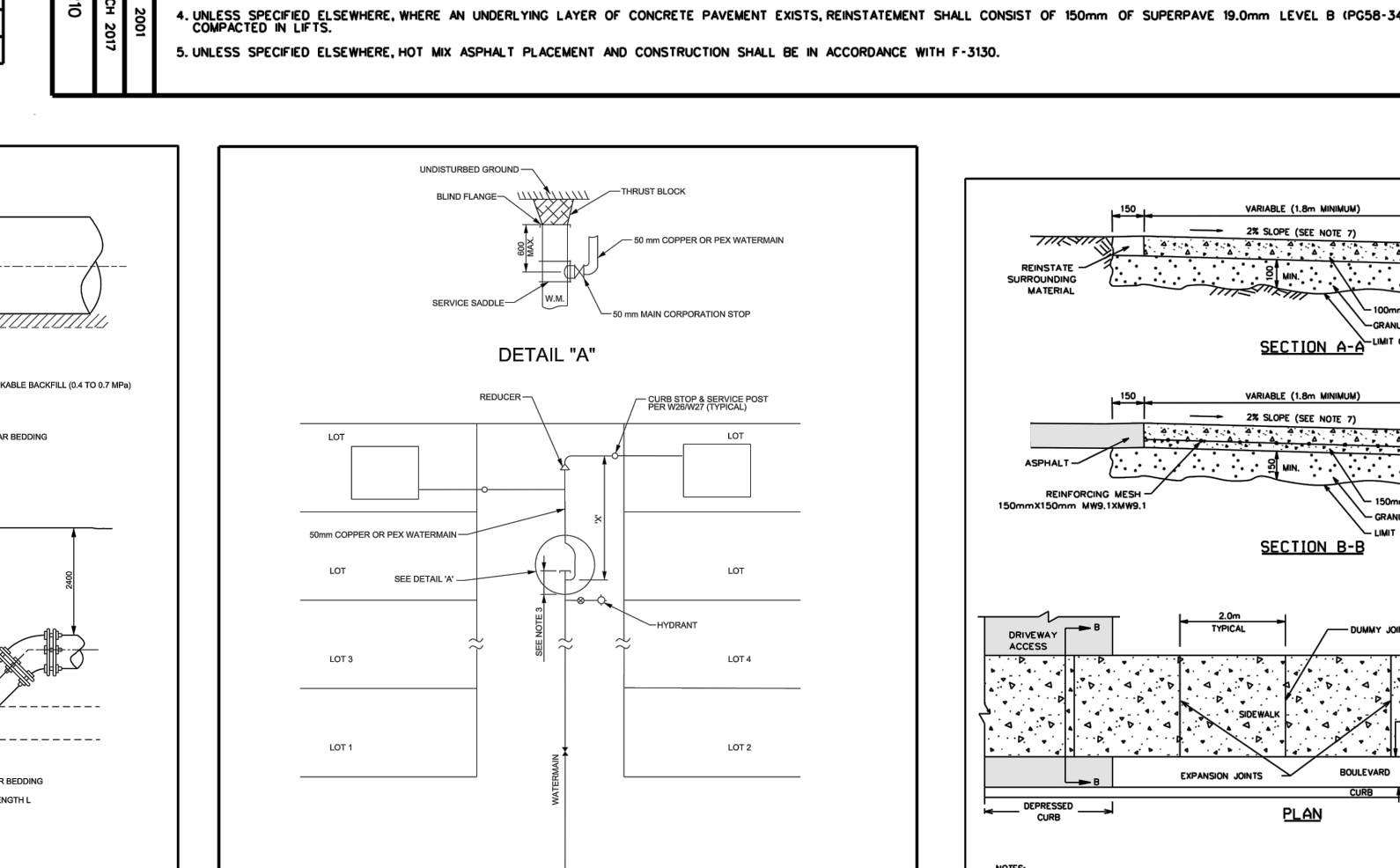
CONCRETE THRUST BLOCKS  
FOR PVC AND DI PIPE  
400mm AND UNDER



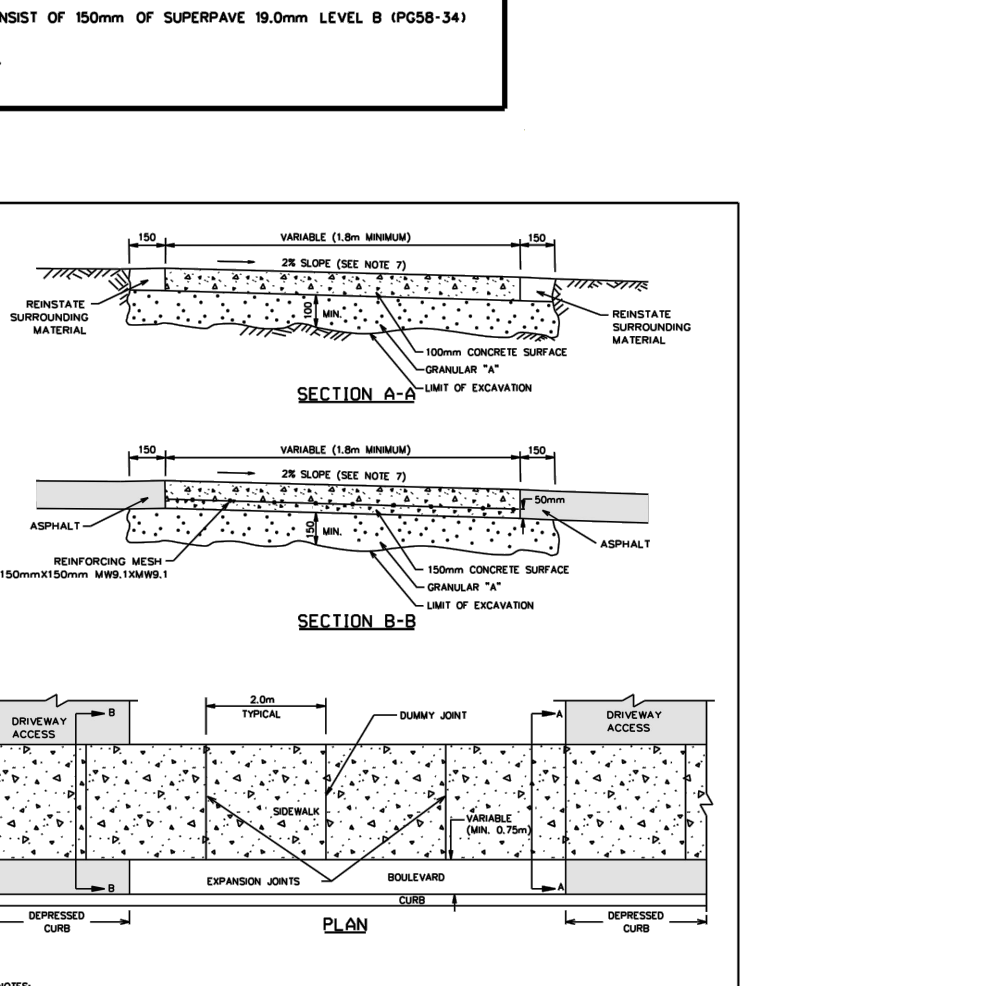
WATERMAIN CROSSING  
OVER SEWER



WATERMAIN CROSSING  
BELOW SEWER



WATERMAIN LAYOUT FOR  
RESIDENTIAL DEAD-END STREETS



TYPICAL CONCRETE SIDEWALK  
IN BOULEVARD