

KEY MAP
SCALE: N.T.S.

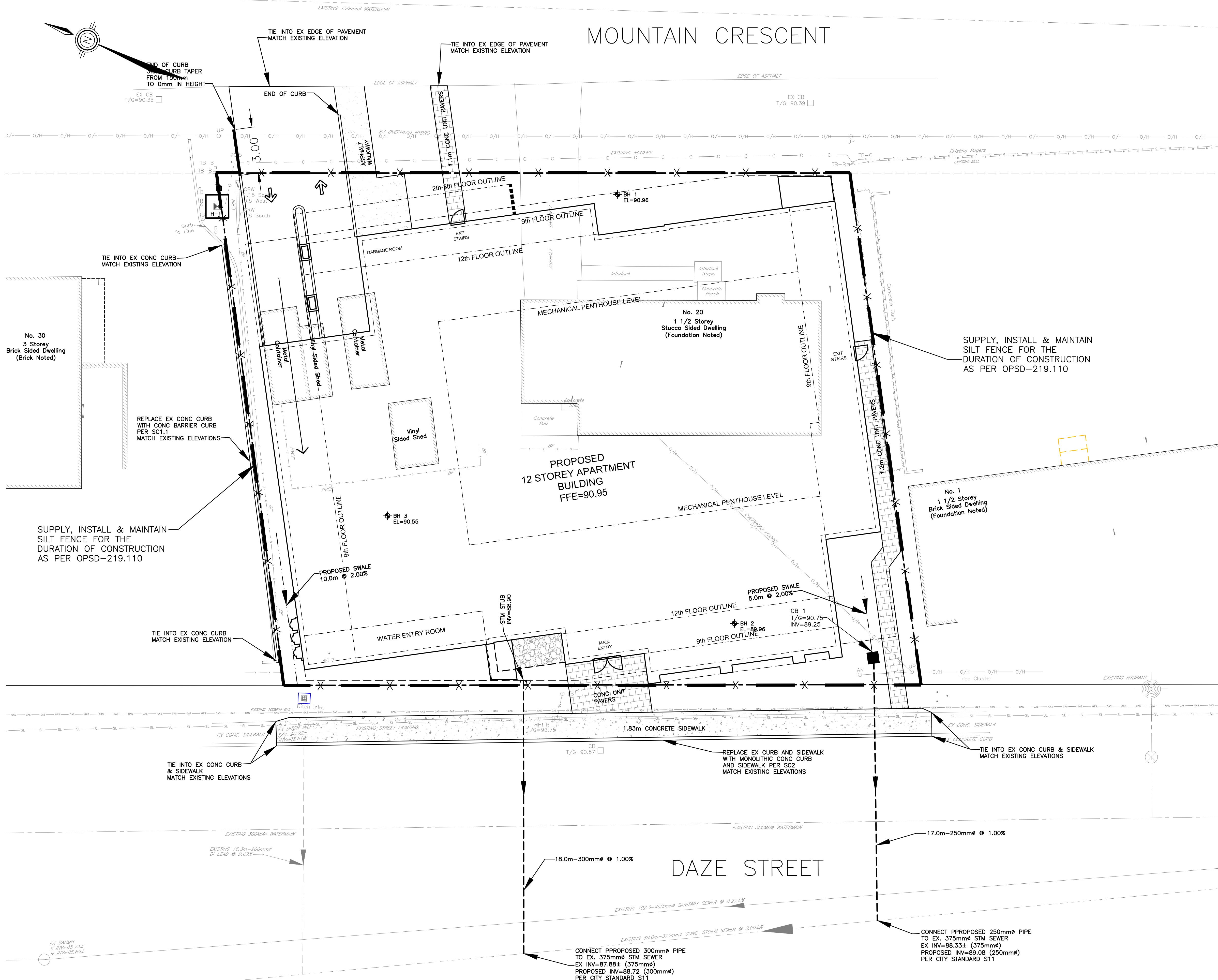
LEGEND

— X —

SILT FENCE
(PER OPSD-219.110)

NOTES:

1. THE CONTRACTOR IS RESPONSIBLE FOR THE INSTALLATION AND CONSTRUCTION OF ALL SEDIMENT AND EROSION CONTROL MEASURES TO ENSURE THAT SEDIMENT DOES NOT MIGRATE FROM THE CONSTRUCTION SITE. THE CONTRACTOR SHALL IMPLEMENT BEST MANAGEMENT PRACTICES, TO PROVIDE FOR PROTECTION OF THE AREA DRAINAGE SYSTEM AND THE RECEIVING WATERCOURSE DURING CONSTRUCTION ACTIVITIES. THIS INCLUDES LIMITING THE AMOUNT OF EXPOSED SOIL, USING FILTER CLOTH UNDER THE GRATES OF CATCHBASINS AND MANHOLES (SEE NOTE 2) AND INSTALLING SILT FENCES (PER OPSD 219.110) AND OTHER EFFECTIVE SEDIMENT TRAPS.
2. THE CONTRACTOR IS TO SUPPLY, INSTALL AND MAINTAIN FILTER CLOTH BETWEEN THE FRAME AND COVER ON ALL PLANNED CATCH BASINS AND MANHOLES FOR THE DURATION OF CONSTRUCTION.
3. A MUD MAT IS TO BE INSTALLED AT EACH CONSTRUCTION ENTRANCE AND SHALL BE MAINTAINED UNTIL THE PLACEMENT OF THE GRANULAR SUB-BASE. MUD MAT SHALL BE CONSTRUCTED OF 100mmØ CLEAR STONE, 400mm THICK. MUD MAT SHALL BE OF SUFFICIENT LENGTH TO ENSURE THAT A MINIMUM AMOUNT OF MATERIALS IS TRUCKED OFF SITE ONTO ADJACENT ROADS.
4. IN ORDER TO AVOID POLLUTANTS FROM BEING DISCHARGED, THE CONTRACTOR MUST MINIMIZE THE GENERATION OF DUST THROUGH APPROPRIATE APPLICATION OF WATER OR OTHER DUST SUPPRESSION TECHNIQUES.
5. THE CONTRACTOR IS PROHIBITED FROM DISCHARGING GROUND WATER OR ACCUMULATED STORMWATER THAT IS REMOVED FROM EXCAVATIONS, TRENCHES, FOUNDATIONS, ETC. UNLESS SUCH WATERS ARE FIRST EFFECTIVELY TREATED BY APPROPRIATE CONTROLS AS SEDIMENT SOCKS, DEWATERING TANKS, ETC.
6. THE CONTRACTOR MUST INITIATE SOIL STABILIZATION MEASURES IMMEDIATELY WHENEVER EARTH-DISTURBING ACTIVITIES HAVE PERMANENTLY OR TEMPORARILY CEASED ON ANY PORTION OF THE SITE.



CONTRACT DRAWINGS:
Contractor must verify all dimensions and be responsible for same. Any discrepancies must be reported to the Engineer before commencing work. Drawings are not to be copied, distributed or used by others without the express written consent of Anley Graham & Associates Limited. The recipient is responsible for confirming the accuracy and completeness of the information with the originator. The recipient assumes all risks and liabilities associated with the use of the drawings. The recipient will save and hold harmless Anley Graham & Associates Limited for any claims whatsoever associated with or related to the use of the drawings. The recipient will not reuse any portion of the drawings for any future project without the express written permission of Anley Graham & Associates Limited.

CAUTION: The information contained in this drawing is solely for the intended recipient. Any copying, distribution or use by others without the express written consent of Anley Graham & Associates Limited is prohibited. The recipient is responsible for confirming the accuracy and completeness of the information with the originator. The recipient assumes all risks and liabilities associated with the use of the drawings. The recipient will save and hold harmless Anley Graham & Associates Limited for any claims whatsoever associated with or related to the use of the drawings. The recipient will not reuse any portion of the drawings for any future project without the express written permission of Anley Graham & Associates Limited.

NO.	REVISIONS	DATE	INITIAL
2	ISSUED FOR SITE PLAN APPROVAL	NOV 25/20	JX
1	ISSUED FOR PRELIMINARY DESIGN REVIEW	NOV 23/20	JX

Not Valid Unless Signed And Dated

Professional Engineers
Ontario
NOVEMBER 25, 2020
Limited Licensee
Name: J.W.XU
Number: 100171806
Category: CIVIL-see limitation
Limitations:
This licence is subject to the limitations as detailed on the certificate.
Association of Professional Engineers of Ontario

SCALE: 1 : 125
DESIGN: JX
DRAWN: MH
CHECKED: GSC/JX
DATE: OCT 2020

PROPOSED 12 STOREY APARTMENT BUILDING
20 MOUNTAIN CRESCENT
CITY OF OTTAWA

EROSION AND SEDIMENT CONTROL PLAN

Anley GROUP CONSULTING ENGINEERS PLANNERS
CONTRACT No. 2004B 2004B-SC1