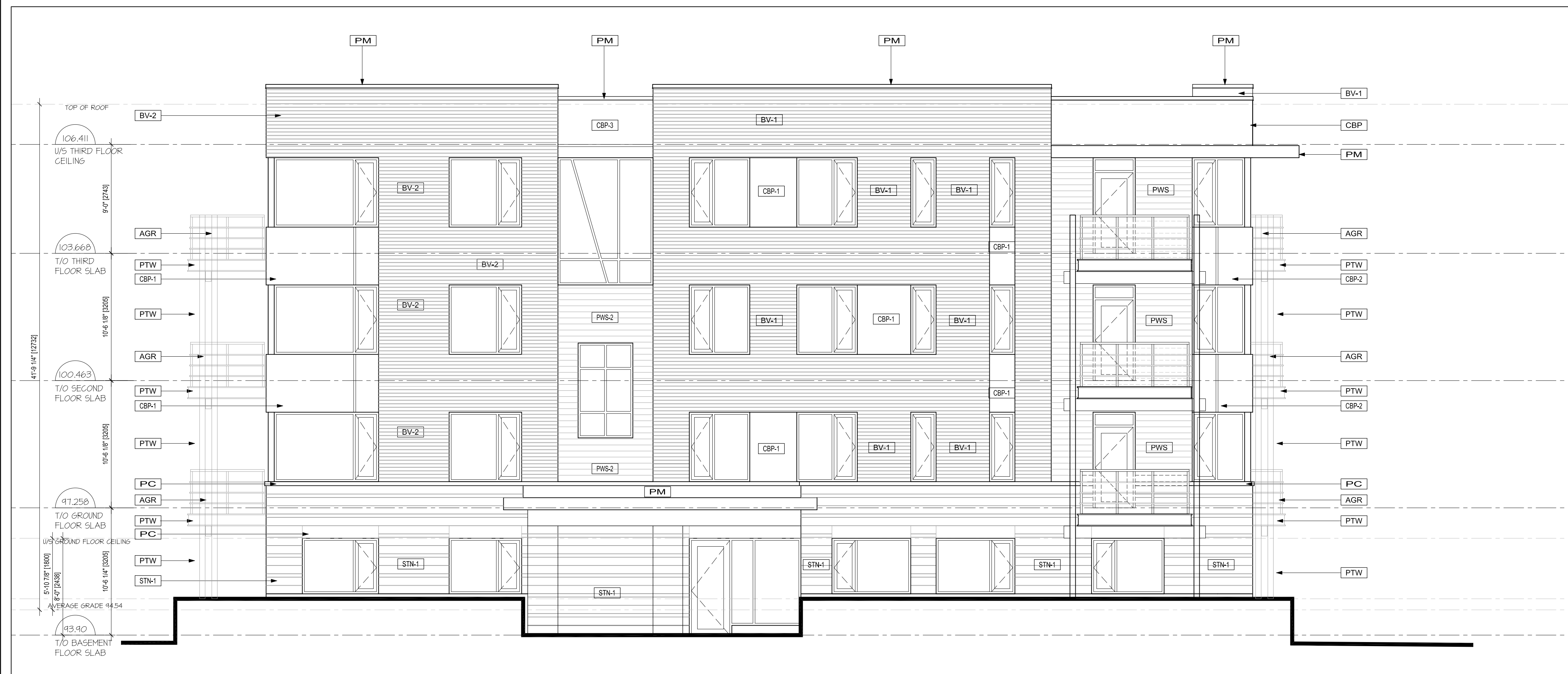


1 NORTH ELEVATION  
A3.1 3/16" = 1'-0"



2 EAST ELEVATION  
A3.1 3/16" = 1'-0"

APPROVED  REFUSED   
 THIS 02 DAY OF December, 2020  
 ERIN O'CONNELL, MCIP, RPP, MANAGER (A)  
 DEVELOPMENT REVIEW, WEST  
 PLANNING, INFRASTRUCTURE AND ECONOMIC  
 DEVELOPMENT DEPARTMENT, CITY OF OTTAWA

2	JULY 10, 2020	REISSUED FOR SITE PLAN CONTROL
1	APR. 28, 2020	ISSUED FOR SITE PLAN CONTROL
no.	date	revision

It is the responsibility of the appropriate contractor to check and verify all dimensions on site and report all errors and/or omissions to the architect.

All contractors must comply with all pertinent codes and by-laws.

Do not scale drawings.

This drawing may not be used for construction until signed.

Copyright reserved.



### MATERIALS LIST

#### FINISH MATERIAL LEGEND

- BV-1 BRICK VENEER TYPE - 1
- BV-2 BRICK VENEER TYPE - 2
- STN-1 STONE VENEER TYPE
- PC PRECAST CONCRETE
- NSW NATURAL STAINED WOOD
- PM PREFINISHED METAL
- PWS PREFINISHED WOOD SIDING
- PWS-2 PREFINISHED WOOD SIDING (ACCENT COLOUR)
- AGR ALUMINUM 4 GLASS GUARD C/M ALUMINUM RAILING
- CBP-1 CEMENT BOARD PANEL (COLOUR 1-LIGHT)
- CBP-2 CEMENT BOARD PANEL (COLOUR 2-DARK)
- CBP-3 CEMENT BOARD PANEL (ACCENT COLOUR)
- CP CEMENT PARINGS
- PTW PRESSURE TREATED WOOD

#### % GLASS OPENINGS

ELEVATION	GLAZING TOTAL AREA	TOTAL AREA	%
EAST ELEVATION	985FT <sup>2</sup>	3,514FT <sup>2</sup>	28.0%
NORTH ELEVATION	1,584FT <sup>2</sup>	5,162FT <sup>2</sup>	21.5%
WEST ELEVATION	742FT <sup>2</sup>	3,540FT <sup>2</sup>	20.9%
SOUTH ELEVATION	1,411FT <sup>2</sup>	5,638FT <sup>2</sup>	25.1%
TOTAL:			25.3%

**Hobin Architecture Incorporated**  
 63 Pamela Street  
 Ottawa, Ontario  
 Canada K1S 8K7  
 T: 613-238-7200  
 F: 613-235-2005  
 E: mail@hobinarc.com  
 hobinarc.com

PROJECT/LOCATION:  
**3865 OLD RICHMOND ROAD**

DRAWING TITLE:  
**NORTH AND EAST ELEVATIONS**

DRAWN BY: AM	DATE: APR. 28, 2020	SCALE: 3/16" = 1'-0"
PROJECT: 1948		DRAWING NO.:
		<b>A3.1</b>
		REVISION NO.: