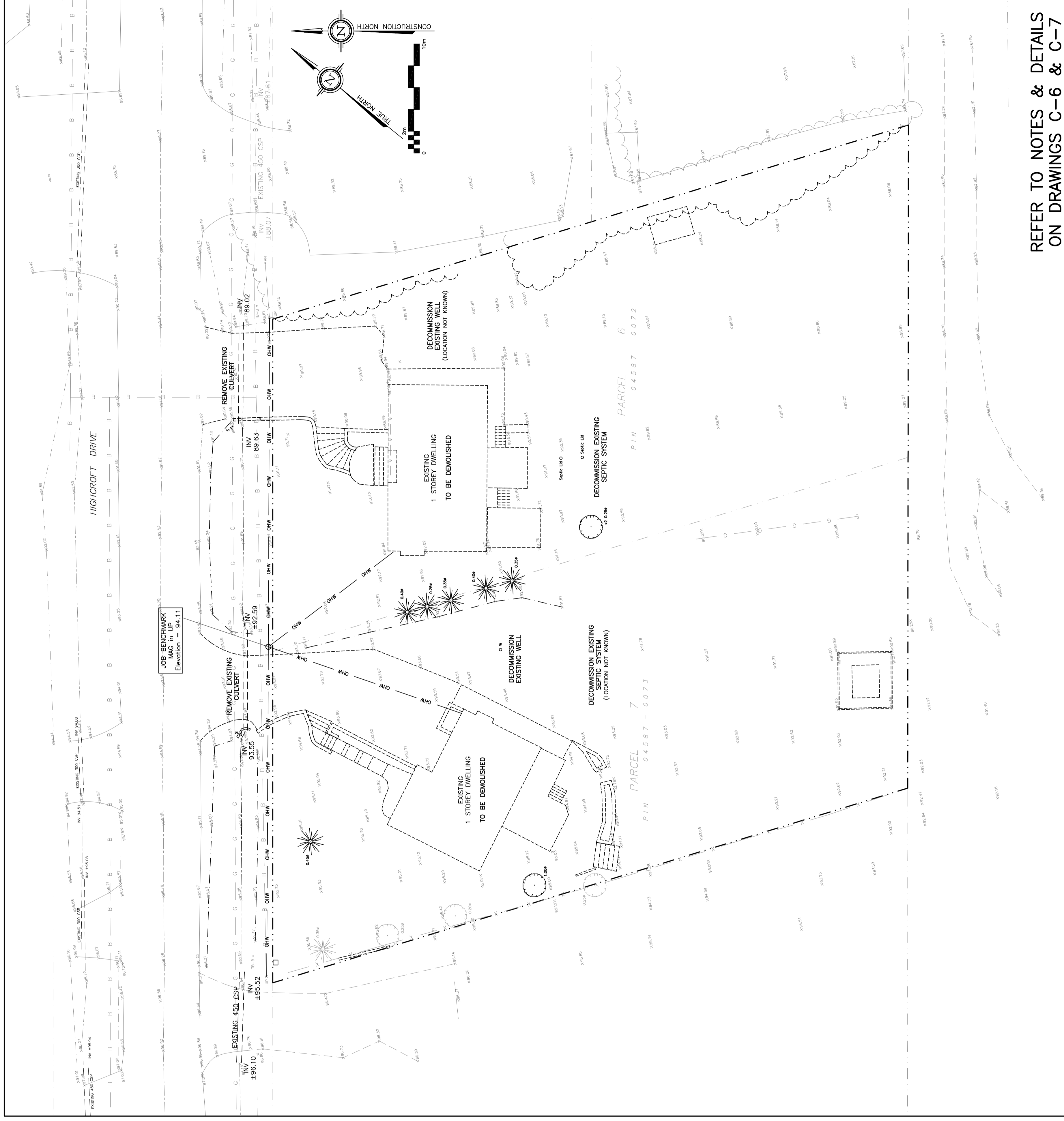


OWNER:
 NIVO DEVELOPMENTS INC.
 255 MICHAEL COMPLAND DRIVE
 OTTAWA, ONTARIO, K2M 0M5
 613-224-6200

DRAWING LEGEND

CB	CATCH BASIN
MH	MANHOLE
CB/MH	CATCH BASIN/MANHOLE
-67.89	EXISTING GRADE ELEVATION
+67.89	PROPOSED GRADE ELEVATION
2%	EXISTING SLOPE OF GRADE
2%	PROPOSED SLOPE OF GRADE
T.O.S	TOP OF SLOPE
B.O.S	BOTTOM OF SLOPE
---	CENTERLINE OF SWALE
---	PROPERTY LINE
---	SILT FENCE BARRIER
---	150mm CURB/DEPRESSED CURB
---	LIGHT-DUTY PAVEMENT
---	HEAVY-DUTY PAVEMENT
---	CONCRETE
---	LANDSCAPE
FFL	FIRST FLOOR ELEVATION
TOF	TOP OF FOUNDATION
BFL	BASEMENT FLOOR ELEVATION
USF	UNDERSIDE OF FOOTING

KEY PLAN



No.	DATE	REVISION
3	NOV 16-20	RE-ISSUED FOR APPROVAL
2	JUN 18-20	RE-ISSUED FOR APPROVAL
1	MAY 5-20	ISSUED FOR COORDINATION

D. B. GRAY ENGINEERING INC.
 700 Long Point Circle
 Ottawa, Ontario
 613-425-8044
 dgray@dbgrayengineering.com

**PROPOSED
 RESIDENTIAL DEVELOPMENT
 1164-1166 HIGHCROFT DR.
 MANOTICK, ONTARIO**

**EXISTING CONDITIONS,
 REMOVALS &
 DECOMMISSIONING**

Drawn: D.B.G.
 Hor. Scale: 1:200
 Vert. Scale: 1:200
 Date: JUN 14-18
 Job No.: 180355
 Drawing No.: C-2
 of 10

Engineer's Seal: D.B. GRAY, 17016502, (1997-19-20), PROVINCE OF ONTARIO
 NOT VALID UNLESS SIGNED & DATED

REFER TO NOTES & DETAILS
 ON DRAWINGS C-6 & C-7