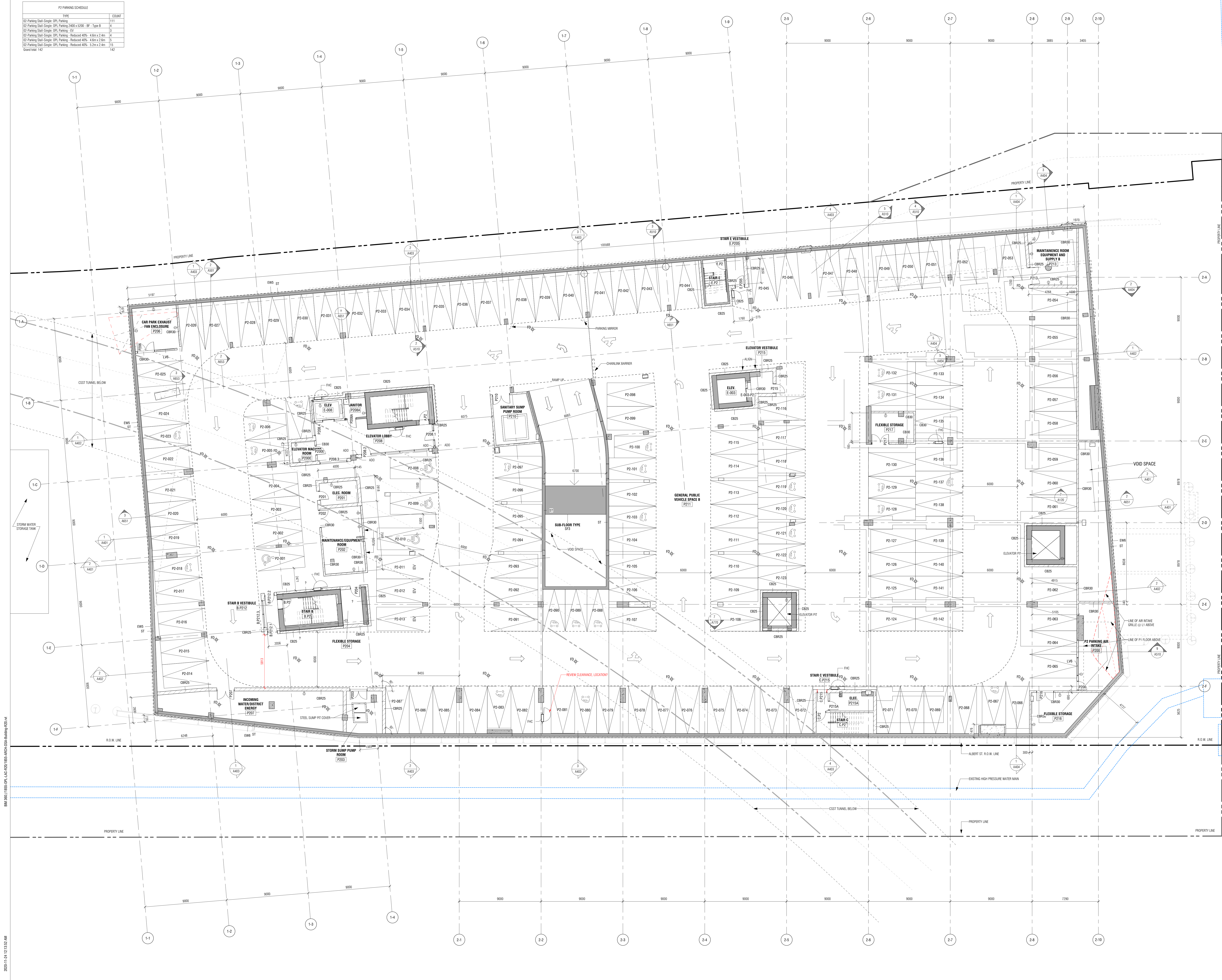


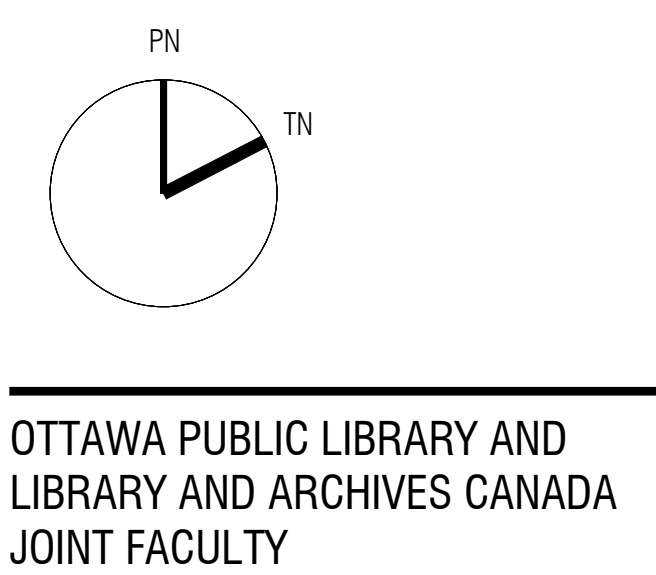
P2 PARKING SCHEDULE	
TYPE	COUNT
GP Parking Stall-Single: OPL Parking	111
GP Parking Stall-Single: OPL Parking 2400 x 5300 - 6F - Type B	4
GP Parking Stall-Single: OPL Parking - EV	2
GP Parking Stall-Single: OPL Parking - Reduced 40% - 4.6m x 2.4m	6
GP Parking Stall-Single: OPL Parking - Reduced 40% - 4.6m x 2.4m	5
GP Parking Stall-Single: OPL Parking - Reduced 40% - 5.3m x 2.4m	15
Grand Total:	142



ISSUED			
No.	Date	Description	
0	2020-05-28	ISSUED FOR CD 30%	
1	2020-09-29	ISSUED FOR CD 50%	
2	2020-11-16	RE ISSUED FOR SITE PLAN CONTROL	
3	2020-11-23	ISSUED FOR SPC RESPONSE	

- GENERAL NOTES - PARTITIONS:**
- GYPSUM BOARD PARTITIONS AND FURRING:**
    - EXTEND GYPSUM BOARD PARTITIONS FULL HEIGHT TO US OF FLOOR OR ROOF SLAB ABOVE, UNLESS OTHERWISE INDICATED. AT ACCESS FLOORS, GYPSUM BOARD PARTITIONS EXTEND TO THE CEILING SLAB BELOW UNLESS OTHERWISE INDICATED.
    - AT NON-RATED FIRE SEPARATIONS, ACUSTIC AND FIRE RATED PARTITIONS, PROVIDE JOINT SEALANT AT PERIMETER JOINTS AND ALL PENETRATIONS THROUGH GYPSUM BOARD.
    - PROVIDE BACHER PLATES FOR HANDRAIL SUPPORT, BUMPER WALLS, WALL MOUNTED MAIL BOXES, WORKTOP ACCESSORIES, TACK BOARDS AND MOUNTING SURFACES ETC. REFER TO PLANS FOR EXTENT AND LOCATION.
    - AT PARTITIONS TO RECEIVE CERAMIC TILE WALL FINISH PROVIDE TILE BACHER BOARD IN LIEU OF GYPSUM BOARD BEHIND TILES. BACHER BOARD TO BE RATED TYPE AT FIRE RATED PARTITIONS.
    - AT ACUSTIC PARTITIONS, RECESSED ELECTRICAL BOXES ON OPPOSITE SIDES OF PARTITION TO BE STAGGERED MINIMUM 600mm.
    - SEE ROOM FINISH SCHEDULE FOR INTERIOR FINISHES.
    - HEIGHT OF FURRING WALL TO BE 150mm ABOVE FINISHED CEILING UNLESS OTHERWISE NOTED.
    - SUPPLIES FOR GYPSUM BOARD PARTITIONS AND FURRING:
      - GYPSUM ASSEMBLY TO EXTEND MIN 150mm ABOVE FINISHED CEILING.
      - DO NOTES ASSEMBLY TO STOP AT US OF FINISHED CEILING.
      - DO NOTES CEILING WALL - HEIGHT INDICATED ON FLOOR PLANS. CAP WITH GIB UNLESS OTHERWISE INDICATED.
      - DO NOTES ASSEMBLY FINISHES OR WITH IMPACT RESISTANT GIB ON ONE SIDE ONLY (REFER TO SPS).
      - DO NOTES PERIMETER METAL SUPPORT SYSTEM.
      - DO NOTES FURRING TO EXTEND TO US OF FLOOR OR ROOF SLAB ABOVE.
      - DO NOTES PERIMETER DIVIDER TO EXTEND BELOW ASSEMBLY FROM US OF ACCESS FLOOR TO US SLAB BELOW. REFER TO A402.
      - DO NOTES PARTITIONS EXTENDING FROM US ACCESS FLOOR TO US OF FLOOR OR ROOF SLAB ABOVE.
  - UL LISTINGS PROVIDED FOR FIRE RATED PARTITIONS ARE FOR REFERENCE ONLY. PROVIDE APPROPRIATE MANUFACTURER SPECIFIC UL LISTINGS FOR REVIEW AS REQUIRED IN THE SPECIFICATIONS.**
  - PROVIDE PLYWOOD BACKING FOR ELECTRICAL PANEL MOUNTING AS REQUIRED. REFER TO ELECTRICAL DRAWINGS FOR QUANTITY AND LOCATION.**
  - PROVIDE PLYWOOD BACKING FOR AV DEVICES MOUNTING SUPPORT. REFER TO AV DRAWINGS FOR QUANTITY AND LOCATION.**
  - CONCRETE MASONRY UNIT WALLS AND PARTITIONS:**
    - ALL CONCRETE MASONRY UNIT WALLS AND PARTITIONS TO US OF FLOOR OR ROOF SLAB ABOVE, UNLESS NOTED OTHERWISE. AT ACCESS FLOORS, CONCRETE MASONRY UNIT PARTITIONS EXTEND FROM STRUCTURAL SLAB BELOW UNLESS OTHERWISE INDICATED.
    - PROVIDE COMPRESSIBLE JOINT FILLER CONTINUOUS AT TOP OF ALL CMU WALLS AND PARTITIONS. SEAL JOINTS WHERE EXPOSED. PROVIDE FIRESTOPPING AND SMOKE SEALS AT PERIMETER JOINTS AND PENETRATIONS IN FIRE RATED PARTITIONS.
    - PROVIDE LATERAL BRACING AT TOP OF CMU WALLS AND PARTITIONS. REFER TO STRUCTURAL FOR DETAILS.
    - PROVIDE REINFORCEMENT OF CMU WALLS AND PARTITIONS AS REQUIRED BY STRUCTURAL.
  - FIRE SEPARATIONS:**
    - REFER TO FIRE SEPARATION PLANS - FIRE SEPARATION REQUIREMENTS.
    - AT ALL FIRE SEPARATIONS, INSTALL CONTINUOUS FIRESTOPPING AND SMOKE SEALS AT ALL PERIMETER JOINTS AND PENETRATIONS.
    - AT FIRESTOPPED PANELS, INSTALL FILLER GIB ELECTRICAL PANELS. MAINTAIN FIRE SEPARATION WALLS PROVIDE CONTINUITY OF THE REQUIRED RATING, BOARD, AND AROUND THE PANEL.
      - REFER TO BUILDING DEPARTMENT SCHEDULE FOR EXTERIOR WALL, PARTITION, ROOF, CEILING AND GIB TYPE.
      - REFER TO MECHANICAL AND ELECTRICAL DRAWINGS FOR ADDITIONAL REQUIREMENTS.
    - AT LOCATIONS WHERE MECH DUCTS INTERFERE WITH FULL HEIGHT CONSTRUCTION OF FIRE STOPPARTITION, OFFSET PARTITION ABOVE CEILING AND BRACE AS REQUIRED. MAINTAIN FIRE SEPARATION AND RATING OF PARTITION. OFFSETTING OF PARTITIONS WILL ONLY BE PERMITTED WHERE OUTDOOR CANNOT BE POSITIONED.
  - ALL DIMENSIONS ARE TAKEN TO FACE OF MASONRY OR CONCRETE AT MASONRY OR CONCRETE WALLS AND PARTITIONS. AT STEEL STUD PARTITIONS, DIMENSIONS ARE TAKEN TO FACE OF GYPSUM BOARD, UNLESS OTHERWISE NOTED.**
  - INCREASE THICKNESS OF WALLS OR FURR OUT WALL THICKNESS AS REQUIRED TO ACCOMMODATE MECHANICAL AND ELECTRICAL PANELS AND SERVICES. MAINTAIN FIRE SEPARATION AROUND BACK OF PANELS WHERE APPLICABLE.**
  - FOR DIMENSIONS OF CONCRETE REFER TO SLAB EDGE DRAWINGS.**

**Diamond Schmitt Architects**  
**KWC Architects Inc.**  
Architects in Joint Venture for the OPL/LAC Joint Facility  
384 Adelaide Street West, Suite 1100, Toronto, Canada M5Y 1R7  
Tel: 416 862 8800 Fax: 416 862 5508 info@dsai.ca www.dsai.ca



FLOOR PLAN - LEVEL P2

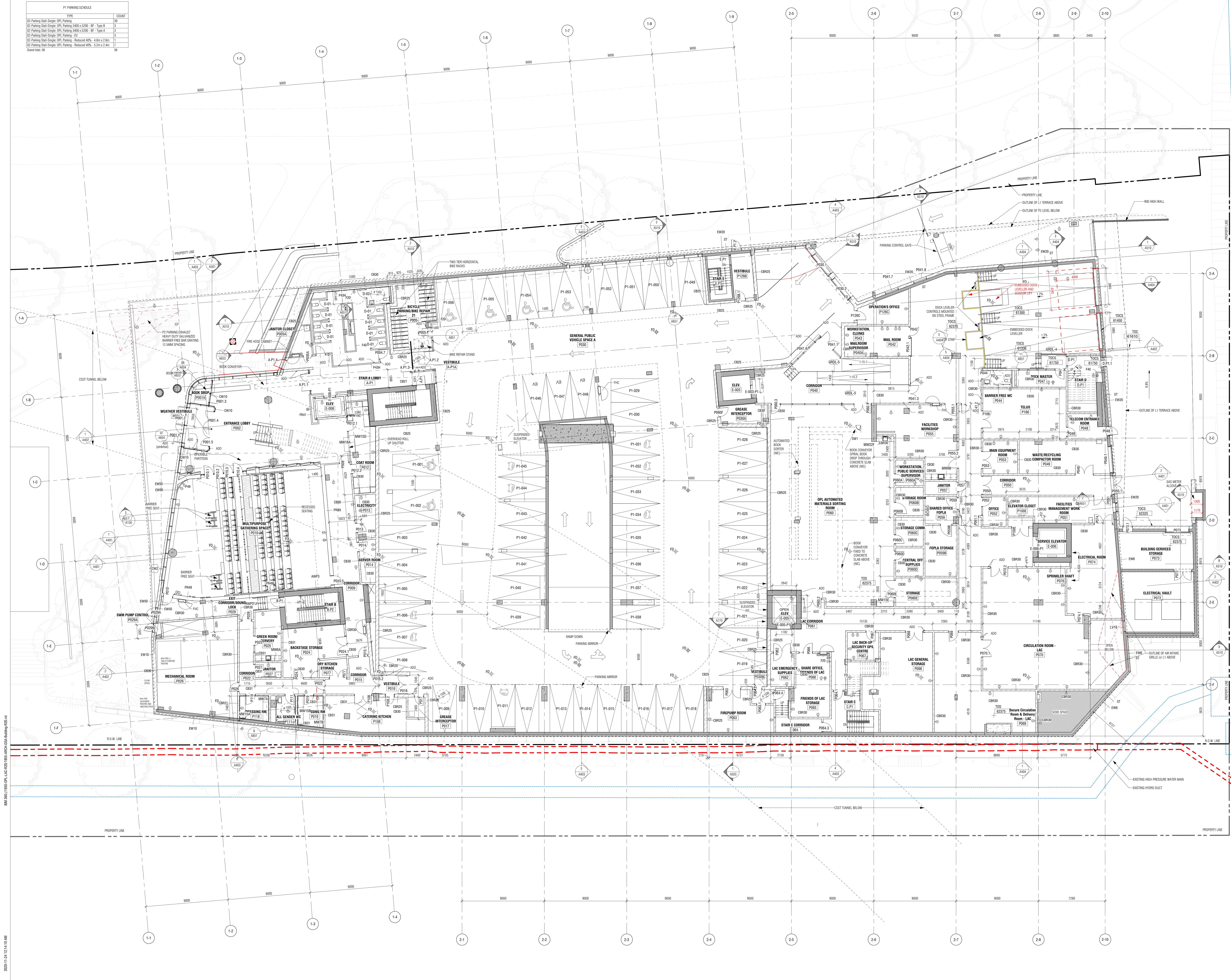
Scale: As Indicated  
Project No: DSA 1855 / KWC 1909  
Date: 12 JUNE 2020

**A101**  
DWG # 18176

D07-12-20-077



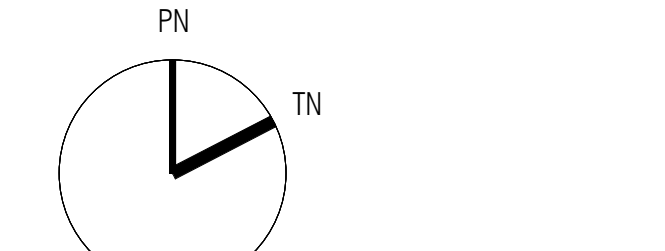
P1 PARKING SCHEDULE		
TYPE	COUNT	
(1) Parking Stall Single: OPL Parking	39	
(2) Parking Stall Single: OPL Parking 2400 x 5200 - BP - Type B	3	
(3) Parking Stall Single: OPL Parking 3400 x 5200 - BP - Type A	3	
(4) Parking Stall Single: OPL Parking - EV	3	
(5) Parking Stall Single: OPL Parking - Reduced 40% - 4.6m x 2.6m	7	
(6) Parking Stall Single: OPL Parking - Reduced 40% - 5.2m x 2.4m	7	
Grand Total: 64	64	



ISSUED			
No.	Date	Issued For	Description
0	2020-05-28	ISSUED FOR CD 30%	
1	2020-09-29	ISSUED FOR CD 60%	
2	2020-11-16	RE ISSUED FOR SITE PLAN CONTROL	
3	2020-11-23	ISSUED FOR SPC RESPONSE	

- GENERAL NOTES - PARTITIONS:**
- GYPSUM BOARD PARTITIONS AND FURNISHING:**
    - EXTENDED GYPSUM BOARD PARTITIONS SHALL BE 10' HIGH TO US OF FLOOR OR ROOF SLAB ABOVE, UNLESS OTHERWISE INDICATED. AT ACCESS FLOORS, GYPSUM BOARD PARTITIONS SHALL BE 10' HIGH TO THE CEILING SLAB BELOW UNLESS OTHERWISE INDICATED.
    - AT NON-RATED FIRE SEPARATIONS, ACUSTIC AND FIRE RATED PARTITIONS, PROVIDE JOINT SEALANT AT PERIMETER JOINTS AND ALL PENETRATIONS THROUGH GYPSUM BOARD.
    - PROVIDE BACKER PLATES FOR HANDRAIL SUPPORT, BUMPER WALLS, WALL MOUNTED MAIL BOXES, WORKROOM ACCESSORIES, TACK BOARDS AND MOUNTING SURFACES ETC. REFER TO PLANS FOR EXACT AND LOCATION.
    - AT PARTITIONS TO RECEIVE CERAMIC TILE WALL FINISH PROVIDE TILE BACKER BOARD IN LIEU OF GYPSUM BOARD BEHIND TILES. BACKER BOARD TO BE FIRE RATED TYPE AT FIRE RATED PARTITIONS.
    - AT ACUSTIC PARTITIONS, RECESSED ELECTRICAL BOXES ON OPPOSITE SIDES OF PARTITION TO BE STAGGERED MINIMUM 600mm.
    - HEIGHT OF FURNISHING WALL TO BE 1500mm ABOVE FINISHED CEILING UNLESS OTHERWISE NOTED.
    - SUPPLIES FOR GYPSUM BOARD PARTITIONS AND FURNISHING:
      - A: GYPSUM BOARD TO EXTEND MIN 1500mm ABOVE FINISHED CEILING
      - B: GYPSUM BOARD TO STOP AT US OF FINISHED CEILING
      - C: GYPSUM BOARD WALL - HEIGHT INDICATED ON FLOOR PLANS. CAP WITH GIB UNLESS OTHERWISE INDICATED.
      - D: GYPSUM BOARD PARTITIONS OR WITH IMPACT RESISTANT GIB ON ONE SIDE ONLY (REFER TO SPS).
      - E: GYPSUM BOARD PARTITIONS OR WITH IMPACT RESISTANT GIB ON BOTH SIDES.
      - F: GYPSUM BOARD PARTITIONS WITH METAL SUPPORT SYSTEM.
      - G: GYPSUM BOARD PARTITIONS TO EXTEND TO US OF FLOOR OR ROOF SLAB ABOVE.
      - H: GYPSUM BOARD PARTITIONS TO EXTEND BELOW ASSEMBLY FROM US OF ACCESS FLOOR TO US OF SLAB BELOW.
      - I: GYPSUM BOARD PARTITIONS FROM 10' ACCESS FLOOR TO US OF FLOOR OR ROOF SLAB ABOVE.
  - UL LISTINGS PROVIDED FOR FIRE RATED PARTITIONS ARE FOR REFERENCE ONLY. PROVIDE APPROPRIATE MANUFACTURER SPECIFIC UL LISTINGS FOR REVIEW AS REQUIRED IN THE SPECIFICATIONS.**
  - PROVIDE PLYWOOD FOR ELECTRICAL PANEL MOUNTING AS REQUIRED. REFER TO ELECTRICAL DRAWINGS FOR QUANTITY AND LOCATION.**
    - PROVIDE PLYWOOD BACKING FOR ALL DEVICES MOUNTING SUPPORT. REFER TO ELECTRICAL DRAWINGS FOR QUANTITY AND LOCATION.
  - CONCRETE MASONRY UNIT WALLS AND PARTITIONS:**
    - ALL CONCRETE MASONRY UNIT WALLS AND PARTITIONS TO US OF FLOOR OR ROOF SLAB ABOVE, UNLESS NOTED OTHERWISE. AT ACCESS FLOORS, CONCRETE MASONRY UNIT PARTITIONS EXTEND FROM STRUCTURAL SLAB BELOW UNLESS OTHERWISE INDICATED.
    - PROVIDE COMPRESSIBLE JOINT FILLER CONTINUOUS AT TOP OF ALL CMU WALLS AND PARTITIONS. SEAL JOINTS WHERE EXPOSED. PROVIDE FIRESTOPPING AND SMOKE SEALS AT PERIMETER JOINTS AND PENETRATIONS IN FIRE RATED PARTITIONS.
    - PROVIDE LATERAL BRACING AT TOP OF CMU WALLS AND PARTITIONS. REFER TO STRUCTURAL FOR DETAILS.
    - PROVIDE REINFORCEMENT OF CMU WALLS AND PARTITIONS AS REQUIRED BY STRUCTURAL.
  - FIRE SEPARATIONS:**
    - REFER TO FIRE SEPARATION PLANS - FIRE SEPARATION REQUIREMENTS.
    - AT ALL FIRE RATED PARTITIONS, INSTALL CONTINUOUS FIRESTOPPING AND SMOKE SEALS AT ALL PERIMETER JOINTS AND PENETRATIONS.
    - AT FIRESTOPPED PANELS, INSTALL FIRESTOPPING ELECTRICAL PANELS. GYPSUM BOARD PARTITIONS SHALL PROVIDE CONTINUITY OF THE REQUIRED RATING. BOARD AND AROUND THE PANEL.
    - REFER TO MECHANICAL AND ELECTRICAL DRAWINGS FOR ADDITIONAL REQUIREMENTS.
    - AT LOCATIONS WHERE MECH. DUCTS INTERFERE WITH FULL HEIGHT CONSTRUCTION OF INTERIOR PARTITIONS, OPEN UP PARTITION ABOVE CEILING AND BRACE AS REQUIRED. MAINTAIN FIRE SEPARATION AND RATING OF PARTITION. OPENING IN PARTITION SHALL ONLY BE PERMITTED WHERE OUTCROOKS CANNOT BE POSITIONED.
    - ALL DIMENSIONS ARE TAKEN TO FACE OF MASONRY OR CONCRETE AT MASONRY AND CONCRETE WALLS AND PARTITIONS. AT STEEL STUD PARTITIONS, DIMENSIONS ARE TAKEN TO FACE OF GYPSUM BOARD, UNLESS OTHERWISE NOTED.
    - INCREASE THICKNESS OF WALLS OR FILL OUT WALL THICKNESS AS REQUIRED TO ACCOMMODATE MECHANICAL AND ELECTRICAL PANELS AND SERVICES. MAINTAIN FIRE SEPARATION AROUND BACK OF PANELS WHERE APPLICABLE.
    - FOR DIMENSIONS OF CONCRETE REFER TO SLAB EDGE DRAWINGS.

**Diamond Schmitt Architects**  
**KWC Architects Inc.**  
 Architects in Joint Venture for the OPL/LAC Joint Facility  
 384 Adelaide Street West, Suite 1100, Toronto, Canada M5H 1B7  
 Tel: 416 862 8800 Fax: 416 862 5508 info@dsai.ca www.dsai.ca



**OTTAWA PUBLIC LIBRARY AND LIBRARY AND ARCHIVES CANADA JOINT FACILITY**

FLOOR PLAN - LEVEL P1

Scale: As Indicated  
 Project No: OSA 1855 / KWC 1909  
 Date: 12 JUNE 2020

**A102** DWG # 18176

BSM 290711850.DWG - LAC P010105-ARCH-004-Bldg-P1.dwg

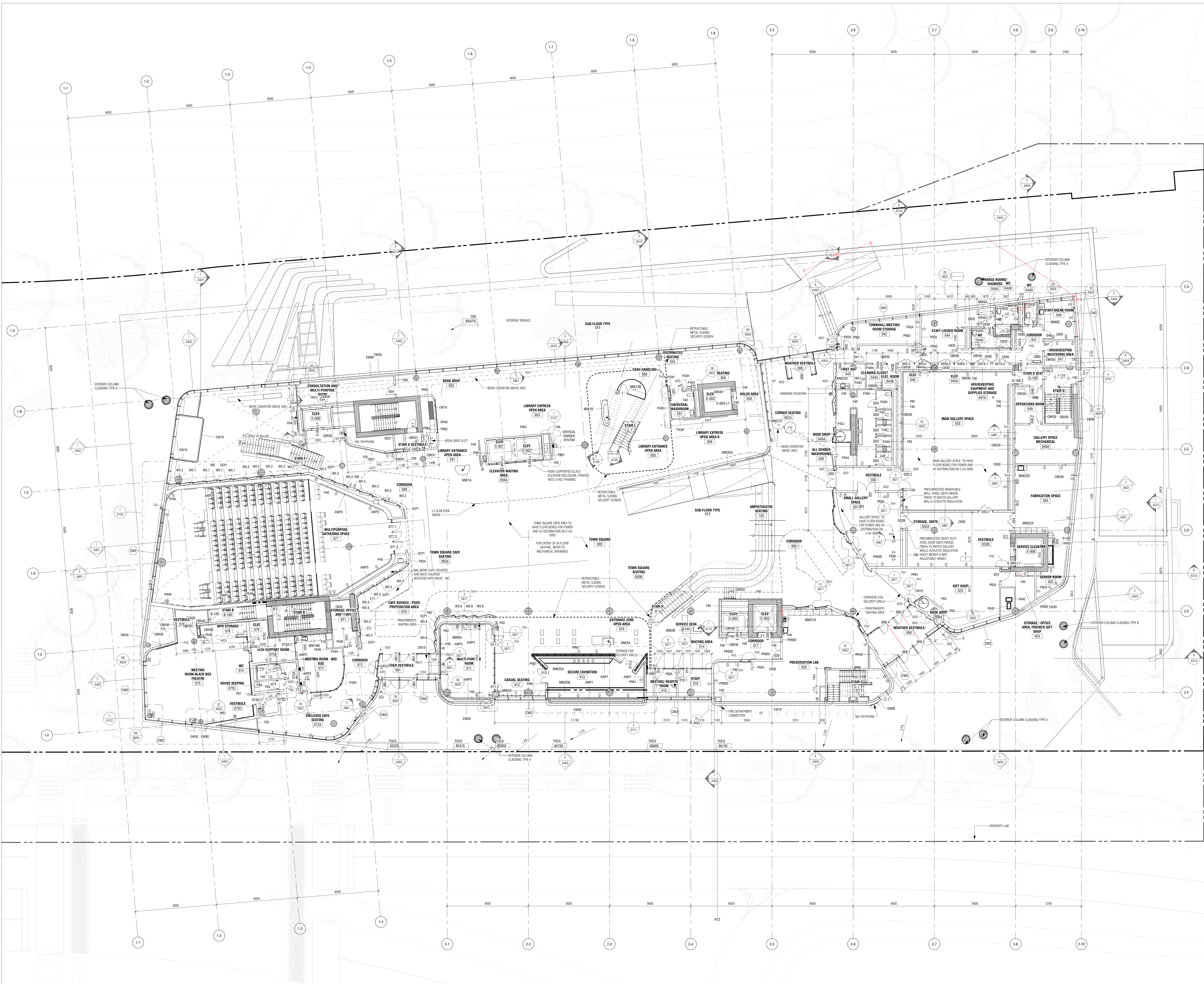
2020-11-26 12:14:10 AM

D07-12-20-077



BNM 390/11850-01P, LAC 0301/085-JCH/CSA-Building-2501.rvt

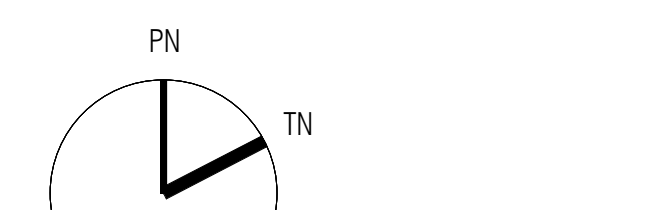
2020/11/24 12:12:51 PM



ISSUED			
No.	Date	Description	
0	2020-05-28	ISSUED FOR CD 30%	
1	2020-09-29	ISSUED FOR CD 60%	
2	2020-10-13	ISSUED FOR CD 90% (ADDENDUM 2)	
3	2020-11-16	RE-ISSUED FOR SITE PLAN CONTROL	
4	2020-11-23	ISSUED FOR SPEC RESPONSE	

- GENERAL NOTES - PARTITIONS:**
- GYPSUM BOARD PARTITIONS AND FURRING:**
    - 1.1 EXTENDED GYPSUM BOARD PARTITIONS SHALL BE FULL HEIGHT TO US OF FLOOR OR ROOF SLAB ABOVE, UNLESS OTHERWISE INDICATED. AT ACCESS FLOORS, GYPSUM BOARD PARTITIONS EXTEND TO THE CEILING SLAB BELOW UNLESS OTHERWISE INDICATED.
    - 1.2 AT NON-RATED FIRE SEPARATIONS, ACUSTIC AND FIRE RATED PARTITIONS, PROVIDE JOINT SEALANT AT PERIMETER JOINTS AND ALL PENETRATIONS THROUGH GYPSUM BOARD.
    - 1.3 PROVIDE BACHER PLATES FOR HANDRAIL SUPPORT, BUMPER WALLS, WALL MOUNTED MAIL BOX, WASHROOM ACCESSORIES, TACK, BOARDS AND MOUNTING SURFACES ETC. REFER TO PLANS FOR EXTENT AND LOCATION.
    - 1.4 AT PARTITIONS TO RECEIVE CERAMIC TILE WALL FINISH PROVIDE TILE BACHER BOARD IN LIEU OF GYPSUM BOARD BEHIND TILES. BACHER BOARD TO BE RATED TYPE AT FIRE RATED PARTITIONS.
    - 1.5 AT ACUSTIC PARTITIONS, RECESSED ELECTRICAL BOXES ON OPPOSITE SIDES OF PARTITION TO BE STAGGERED MINIMUM 600mm.
    - 1.6 SEE ROOM FINISH SCHEDULE FOR INTERIOR FINISHES.
    - 1.7 HEIGHT OF FURRING WALL TO BE 150mm ABOVE FINISHED CEILING UNLESS OTHERWISE NOTED.
    - 1.8 SUPPORTS FOR GYPSUM BOARD PARTITIONS AND FURRING:
      - A: DENOTES ASSEMBLY TO EXTEND MIN 150mm ABOVE FINISHED CEILING.
      - B: DENOTES ASSEMBLY TO STOP AT US OF FINISHED CEILING.
      - C: DENOTES CEILING WALL - HEIGHT INDICATED ON FLOOR PLANS. CAP WITH GB UNLESS OTHERWISE INDICATED.
      - D: DENOTES ASSEMBLY FINISHES OR WITH IMPACT RESISTANT GB ON ONE SIDE ONLY (REFER TO SP).
      - E: DENOTES FINISHED METAL SUPPORT SYSTEM.
      - F: DENOTES FURRING TO EXTEND TO US OF FLOOR OR ROOF SLAB ABOVE.
      - G: DENOTES PLUMB OVER TO EXTEND BELOW ASSEMBLY FROM US OF ACCESS FLOOR TO US SLAB BELOW. REFER TO 2.4.2.2.
      - H: DENOTES PARTITION EXTENDS FROM US ACCESS FLOOR TO US OF FLOOR OR ROOF SLAB ABOVE.
    - 1.9 ULL LISTINGS PROVIDED FOR FIRE RATED PARTITIONS ARE FOR HISTORIC ONLY. PROVIDE APPROPRIATE MANUFACTURER SPECIFIC ULL LISTINGS FOR REVIEW AS REQUIRED IN THE SPECIFICATIONS.
    - 1.10 PROVIDE PYROFOD FOR ELECTRICAL PANELS MOUNTING AS REQUIRED. REFER TO ELECTRICAL DRAWINGS FOR QUANTITY AND LOCATION.
    - 1.11 PROVIDE PYROFOD BACKING FOR AV DEVICES MOUNTING SUPPORT. REFER TO AV DRAWINGS FOR QUANTITY AND LOCATION.
  - CONCRETE MASONRY UNIT WALLS AND PARTITIONS:**
    - 2.1 ALL CONCRETE MASONRY UNIT WALLS AND PARTITIONS TO US OF FLOOR OR ROOF SLAB ABOVE, UNLESS NOTED OTHERWISE. AT ACCESS FLOORS, CONCRETE MASONRY UNIT PARTITIONS EXTEND FROM STRUCTURAL SLAB BELOW UNLESS OTHERWISE INDICATED.
    - 2.2 PROVIDE COMPRESSIBLE JOINT FILLER CONTINUOUS AT TOP OF ALL CMU WALLS AND PARTITIONS. SEAL JOINTS WHERE EXPOSED. PROVIDE PRECASTING AND SINKS SEALS AT PERIMETER JOINTS AND PENETRATIONS IN FIRE RATED PARTITIONS.
    - 2.3 PROVIDE LATERAL BRACING AT TOP OF CMU WALLS AND PARTITIONS. REFER TO STRUCTURAL FOR DETAILS.
    - 2.4 PROVIDE REINFORCEMENT OF CMU WALLS AND PARTITIONS AS REQUIRED BY STRUCTURAL.
  - FIRE SEPARATIONS:**
    - 3.1 REFER TO FIRE SEPARATION PLANS - FIRE SEPARATION REQUIREMENTS.
    - 3.2 AT ALL FIRE RATED PARTITIONS, INSTALL CONTINUOUS PRECASTING AND SINKS SEALS AT ALL PERIMETER JOINTS AND PENETRATIONS.
    - 3.3 AT PRECASTED PANEL, INSTALLED PANELS, ELECTRICAL PANELS, GENEATHIN BRATED WALLS PROVIDE CONTINUITY OF THE REQUIRED RATING. BRATING AND AROUND THE PANEL.
    - 3.4 REFER TO BRATING ELEMENTS SCHEDULE FOR EXTERIOR WALL, PARTITION, ROOF, CEILING AND GYPSUM TYPES.
    - 3.5 REFER TO MECHANICAL AND ELECTRICAL DRAWINGS FOR ADDITIONAL REQUIREMENTS.
    - 3.6 AT LOCATIONS WHERE MECH. DUCTS INTERFERE WITH FULL HEIGHT CONSTRUCTION OF INTERIOR PARTITIONS, OFFER PARTITION ABOVE CEILING AND BRATE AS REQUIRED. MAINTAIN FIRE SEPARATION SOUND RATING OF PARTITION. OPERATING AND PARTITIONS WALL ONLY BE PERMITTED WHERE OUTDOORS CANNOT BE POSITIONED.
  - ALL DIMENSIONS ARE TAKEN TO FACE OF MASONRY OR CONCRETE AT MASONRY AND CONCRETE WALLS AND PARTITIONS. AT STEEL STUD PARTITIONS, DIMENSIONS ARE TAKEN TO FACE OF GYPSUM BOARD, UNLESS OTHERWISE NOTED.**
  - INCREASE THICKNESS OF WALLS OR FURR OUT WALL THICKNESS AS REQUIRED TO ACCOMMODATE MECHANICAL AND ELECTRICAL PANELS AND SERVICES. MAINTAIN FIRE SEPARATION AROUND BACK OF PANELS WHERE APPLICABLE.**
  - FOR DIMENSIONS OF CONCRETE REFER TO SLAB EDGE DRAWINGS.**

**Diamond Schmitt Architects**  
**KWC Architects Inc.**  
Architects in Joint Venture for the OPLAC Joint Facility  
384 Adelaide Street West, Suite 110, Toronto, Canada M5H 1B7  
Tel: 416 862 8800 Fax: 416 862 5508 info@dsai.ca www.dsai.ca



**OTTAWA PUBLIC LIBRARY AND  
LIBRARY AND ARCHIVES CANADA  
JOINT FACILITY**

FLOOR PLAN - LEVEL 1

Scale: As Indicated  
Project No: OSA 1855 / KWC 1909  
Date: 12 JUNE 2020

**A103**  
DWG # 18176

D07-12-20-077



BM 390.71850 DPL LAC 13071855-ARCH-05A-Bldg-250.rvt

2020-11-24 12:12:53 AM

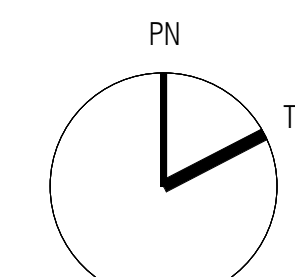


ISSUED			
No.	Date	Description	
0	2020-05-28	ISSUED FOR CD 30%	
1	2020-09-29	ISSUED FOR CD 50%	
2	2020-11-18	RE ISSUED FOR SITE PLAN CONTROL	
3	2020-11-23	ISSUED FOR SPC RESPONSE	

#### GENERAL NOTES - PARTITIONS:

- GYPSUM BOARD PARTITIONS AND FURRING:**
  - 1.1 EXTEND GYPSUM BOARD PARTITIONS FULL HEIGHT TO U/S OF FLOOR OR ROOF SLAB ABOVE, UNLESS OTHERWISE INDICATED. AT ACCESS FLOORS, GYPSUM BOARD PARTITIONS EXTEND TO THE CEILING SLAB BELOW UNLESS OTHERWISE INDICATED.
  - 1.2 AT NON-RATED FIRE SEPARATIONS, ACUSTIC AND FIRE RATED PARTITIONS, PROVIDE JOINT SEALANT AT PERIMETER JOINTS AND ALL PENETRATIONS THROUGH GYPSUM BOARD.
  - 1.3 PROVIDE BACKER PLATES FOR HANDRAIL SUPPORT, BUMPER WALLS, WALL MOUNTED MILL WORK, WORKTOP ACCESSORIES, TACK BOARDS AND MOUNTING SURFACES ETC. REFER TO PLANS FOR EXTENT AND LOCATIONS.
  - 1.4 AT PARTITIONS TO RECEIVE CERAMIC TILE WALL FINISH PROVIDE TILE BACKER BOARD IN LIEU OF GYPSUM BOARD BEHIND TILES. BACKER BOARD TO BE RATED TYPE AT FIRE RATED PARTITIONS.
  - 1.5 AT ACUSTIC PARTITIONS, RECESSED ELECTRICAL BOXES ON OPPOSITE SIDES OF PARTITION TO BE STAGGERED MINIMUM 600mm.
  - 1.6 SEE ROOM FINISH SCHEDULE FOR INTERIOR FINISHES.
  - 1.7 HEIGHT OF FURRING WALL TO BE 150mm ABOVE FINISHED CEILING UNLESS OTHERWISE NOTED.
  - 1.8 SURFACES FOR GYPSUM BOARD PARTITIONS AND FURRING:
    - A: DENOTES ASSEMBLY TO EXTEND MIN 150mm ABOVE FINISHED CEILING.
    - B: DENOTES ASSEMBLY TO STOP AT U/S OF FINISHED CEILING.
    - C: DENOTES LOW WALL - HEIGHT INDICATED ON FLOOR PLANS. CAP WITH GB UNLESS OTHERWISE INDICATED.
    - D: DENOTES ASSEMBLY PER APICES OR WITH IMPACT RESISTANT GB ON ONE SIDE ONLY (REFER TO SP2).
    - E: DENOTES ASSEMBLY PER APICES OR WITH IMPACT RESISTANT GB ON BOTH SIDES.
    - F: DENOTES FRAMEWORK METAL SUPPORT SYSTEM.
    - G: DENOTES FURRING TO EXTEND TO U/S OF FLOOR OR ROOF SLAB ABOVE.
    - H: DENOTES PLenum DIVERSE TO EXTEND BELOW ASSEMBLY FROM U/S OF ACCESS FLOOR TO U/S SLAB BELOW. REFER TO A402.
    - I: DENOTES PARTITION EXTENDS FROM I/O ACCESS FLOOR TO INTERFERENCE ONLY. PROVIDE APPROPRIATE MANUFACTURER SPECIFIC ULC LISTINGS FOR REVIEW AS REQUIRED IN THE SPECIFICATIONS.
  - 1.9 ULC LISTINGS PROVIDED FOR FIRE RATED PARTITIONS ARE FOR REFERENCE ONLY. PROVIDE APPROPRIATE MANUFACTURER SPECIFIC ULC LISTINGS FOR REVIEW AS REQUIRED IN THE SPECIFICATIONS.
  - 1.10 PROVIDE PLYWOOD FOR ELECTRICAL PANEL MOUNTING AS REQUIRED. REFER TO ELECTRICAL DRAWINGS FOR QUANTITY AND LOCATION.
  - 1.11 PROVIDE PLYWOOD BACKING FOR AV DEVICES MOUNTING SUPPORT. REFER TO AV DRAWINGS FOR QUANTITY AND LOCATION.
- CONCRETE MASONRY UNIT WALLS AND PARTITIONS:**
  - 2.1 ALL CONCRETE MASONRY UNIT WALLS AND PARTITIONS TO U/S OF FLOOR OR ROOF SLAB ABOVE, UNLESS NOTED OTHERWISE. AT ACCESS FLOORS, CONCRETE MASONRY UNIT PARTITIONS EXTEND FROM STRUCTURAL SLAB BELOW UNLESS OTHERWISE INDICATED.
  - 2.2 PROVIDE COMPRESSIBLE JOINT FILLER CONTINUOUS AT TOP OF ALL CMU WALLS AND PARTITIONS. SEAL JOINTS WHERE EXPOSED. PROVIDE FIRESTOPPING AND SMOKE SEALS AT PERIMETER JOINTS AND PENETRATIONS IN FIRE RATED PARTITIONS.
  - 2.3 PROVIDE LATERAL BRACING AT TOP OF CMU WALLS AND PARTITIONS. REFER TO STRUCTURAL FOR DETAILS.
  - 2.4 PROVIDE REINFORCEMENT OF CMU WALLS AND PARTITIONS AS REQUIRED BY STRUCTURAL.
- FIRE SEPARATIONS:**
  - 3.1 REFER TO FIRE SEPARATION PLANS - FIRE SEPARATION REQUIREMENTS.
  - 3.2 AT ALL FIRE RATED PARTITIONS, INSTALL CONTINUOUS FIRESTOPPING AND SMOKE SEALS AT ALL PERIMETER JOINTS AND PENETRATIONS.
  - 3.3 AT FIRESTOPPED PANEL, INSTALL INSULATING ELECTRICAL PANELS. GENEWIN BRATED WALLS PROVIDE CONTINUITY OF THE REQUIRED RATING, BOARD AND AROUND THE PANEL.
    - A: REFER TO BUILDING DEPARTMENT SCHEDULE FOR EXTERIOR WALL, PARTITION, ROOF, CEILING AND GYPSUM TYPES.
  - 3.4 AT LOCATIONS WHERE MECH. DUCTS INTERFERE WITH FULL HEIGHT CONSTRUCTION OF INTERIOR PARTITIONS, OFFSET PARTITION ABOVE CEILING AND BRACE AS REQUIRED. MAINTAIN FIRE SEPARATION SOUND RATING OF PARTITION. OFFSETTING OF PARTITIONS WILL ONLY BE PERMITTED WHERE OUTWORK CANNOT BE POSITIONED.
- ALL DIMENSIONS ARE TAKEN TO FACE OF MASONRY OR CONCRETE AT MASONRY AND CONCRETE WALLS AND PARTITIONS. AT STEEL STUD PARTITIONS, DIMENSIONS ARE TAKEN TO FACE OF GYPSUM BOARD, UNLESS OTHERWISE NOTED.
- INCREASE THICKNESS OF WALLS OR FURR OUT WALL THICKNESS AS REQUIRED TO ACCOMMODATE MECHANICAL AND ELECTRICAL PANELS AND SERVICES. MAINTAIN FIRE SEPARATION AROUND BACK OF PANELS WHERE APPLICABLE.
- FOR DIMENSIONS OF CONCRETE REFER TO SLAB EDGE DRAWINGS.

**Diamond Schmitt Architects**  
**KWC Architects Inc.**  
Architects in Joint Venture for the OPL/LAC Joint Facility  
384 Adelaide Street West, Suite 110, Toronto, Canada M5Y 1R7  
Tel: 416 862 8800 Fax: 416 862 5508 info@dsai.ca www.dsai.ca



**OTTAWA PUBLIC LIBRARY AND  
LIBRARY AND ARCHIVES CANADA  
JOINT FACILITY**

FLOOR PLAN - LEVEL 1 MEZZANINE

Scale: As Indicated  
Project No: DSA 1855 / KWC 1909  
Date: 12 JUNE 2020

**A104** DWG # 18176

D07-12-20-077



1. **GYPSUM BOARD PARTITIONS AND FURRING:**
- 1.1 EXTEND GYPSUM BOARD PARTITIONS FULL HEIGHT TO US OF FLOOR OR ROOF SLAB ABOVE, UNLESS OTHERWISE INDICATED. AT ACCESS FLOORS, GYPSUM BOARD PARTITIONS EXTEND TO STRUCTURAL FLOORING UNLESS OTHERWISE INDICATED.
- 1.2 AT NON-RATED FIRE SEPARATIONS, ACUSTIC AND FIRE RATED PARTITIONS, PROVIDE JOINT SEALANT AT PERIMETER JOINTS AND ALL PENETRATIONS THROUGH GYPSUM BOARD.
- 1.3 PROVIDE BACKER PLATE LIEU OF STRUCTURAL SUPPORT, BUMPER RAILS, MOUNTED MILLWORK, WASHROOM ACCESSORIES, TACK, BOARDS AND WRITING SURFACES ETC. REFER TO PLANS FOR EXTENT AND FINISHES.
- 1.4 AT PARTITIONS TO RECEIVE CERAMIC TILE WALL FINISH PROVIDE TILE BACKER BOARD IN LIEU OF GYPSUM BOARD BEHIND TILES. BACKER BOARD TO BE FIRE RATED TYPE AT FIRE RATED PARTITIONS.
- 1.5 PROVIDE PARTITIONS TO BE STAGGERED MINIMUM 600mm ON OPPOSITE SIDES OF PARTITION TO BE STAGGERED MINIMUM 600mm.
- 1.6 SEE ROOM FINISH SCHEDULE FOR INTERIOR FINISHES.
- 1.7 HEIGHT OF FURRING WALL TO BE 150mm ABOVE FINISHED CEILING FINISH, OTHERWISE:
- 1.8 SUFFICES FOR GYPSUM BOARD PARTITIONS AND FURRING:

- [illegible]

OTL AND ARCHIVES CANADA JOINT FACULTY

33% PN

33% TN

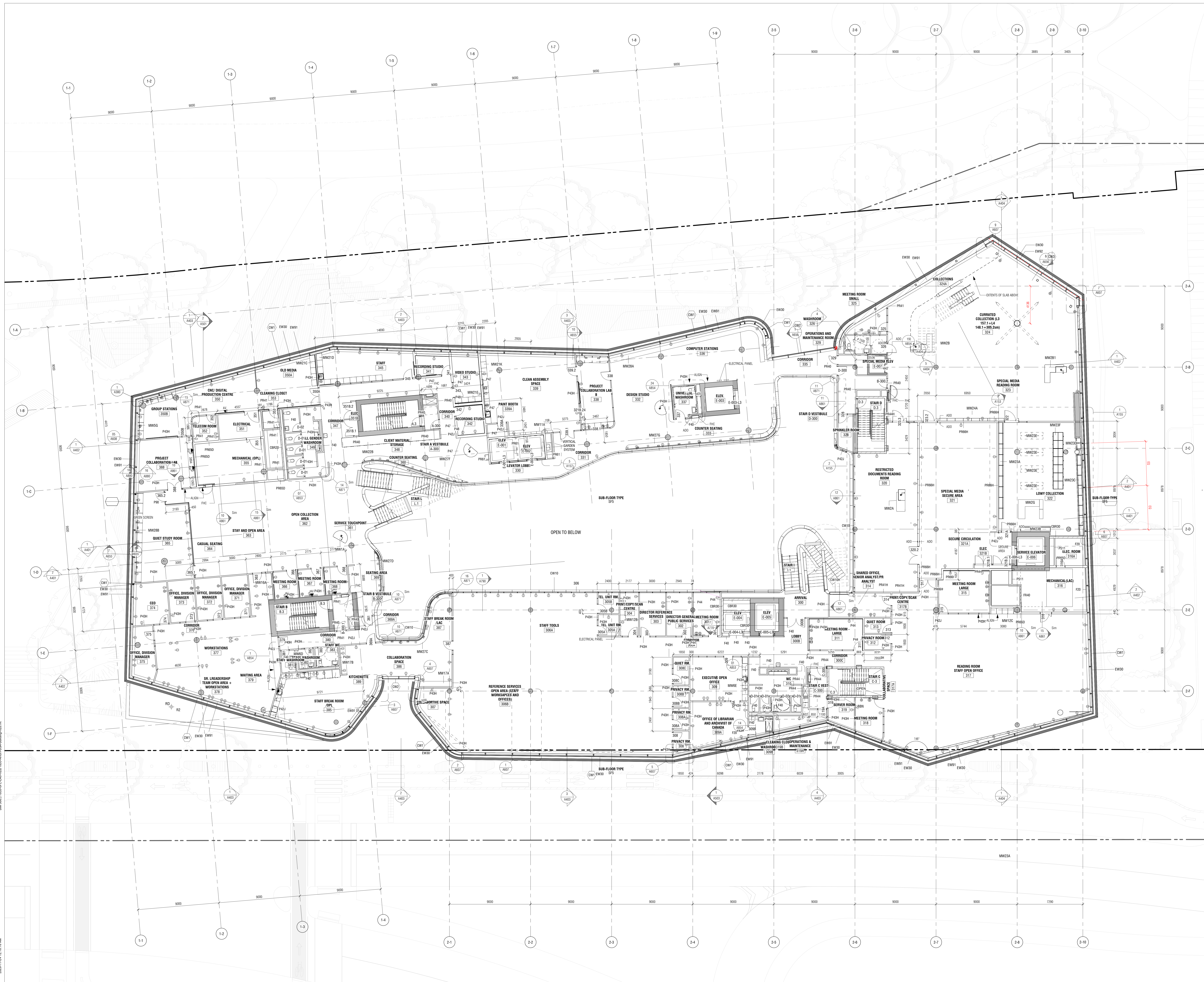
33%

OTTAWA PUBLIC LIBRARY AND  
LIBRARY AND ARCHIVES CANADA  
JOINT FACULTY

Scale: As indicated  
Project No: DSA 1855 / KWC 1909  
Date: 12 JUNE 2020



2020-11-26 12:16:10 AM  
BNA 390/11850-DP-LAC 0301/0305-ARCH-0304-Bldg-250.rvt

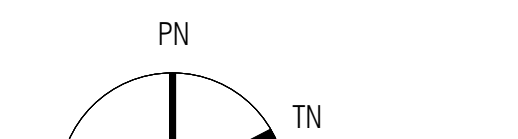


ISSUED			
No.	Date	Issued For	Description
0	2020-05-28	ISSUED FOR CD 30%	
1	2020-09-29	ISSUED FOR CD 50%	
2	2020-11-16	BE ISSUED FOR SITE PLAN CONTROL	
3	2020-11-23	ISSUED FOR SPC RESPONSE	

#### GENERAL NOTES - PARTITIONS:

1. Gypsum board partitions and firewalls:
  - 1.1 EXTEND GYPSUM BOARD PARTITIONS FULL HEIGHT TO US OF FLOOR OR ROOF SLAB ABOVE, UNLESS OTHERWISE INDICATED. AT ACCESS FLOORS, GYPSUM BOARD PARTITIONS EXTEND TO THE NEXT SLAB BELOW UNLESS OTHERWISE INDICATED.
  - 1.2 AT NON-RATED FIRE SEPARATIONS, ACUSTIC AND FIRE RATED PARTITIONS, PROVIDE JOINT SEALANT AT PERIMETER JOINTS AND ALL PENETRATIONS THROUGH GYPSUM BOARD.
  - 1.3 PROVIDE BACKER PLATES FOR HANDRAIL SUPPORT, BUMPER RAILS, WALL MOUNTED MAIL BOX, WASHROOM ACCESSORIES, TACK BOARDS AND MOUNTING SURFACES ETC. REFER TO PLANS FOR EXTENT AND LOCATION.
  - 1.4 AT PARTITIONS TO RECEIVE CERAMIC TILE WALL FINISH PROVIDE TILE BACKER BOARD IN LIEU OF GYPSUM BOARD BEHIND TILES. BACKER BOARD TO BE FIRE RATED TYPE AT FIRE RATED PARTITIONS.
  - 1.5 AT ACUSTIC PARTITIONS, RECESSED ELECTRICAL BOXES ON OPPOSITE SIDE OF PARTITION TO BE STAGGERED MINIMUM 600mm.
  - 1.6 SET ROOM FINISH SCHEDULE FOR INTERIOR FINISHES.
  - 1.7 HEIGHT OF FURRING WALL TO BE 150mm ABOVE FINISHED CEILING UNLESS OTHERWISE NOTED.
  - 1.8 SURFACES FOR GYPSUM BOARD PARTITIONS AND FURRING:
    - A: DENOTES ASSEMBLY TO EXTEND MIN 150mm ABOVE FINISHED CEILING.
    - B: DENOTES ASSEMBLY TO STOP AT US OF FINISHED CEILING.
    - C: DENOTES LOW WALL - HEIGHT INDICATED ON FLOOR PLANS. CAP WITH GB UNLESS OTHERWISE INDICATED.
    - D: DENOTES ASSEMBLY FINISHES GB WITH IMPACT RESISTANT GB ON ONE SIDE ONLY (REFER TO SPS).
    - E: DENOTES ASSEMBLY FINISHES GB WITH IMPACT RESISTANT GB ON BOTH SIDES.
    - F: DENOTES FIRE-RATED METAL SUPPORT SYSTEM.
    - G: DENOTES FURRING TO EXTEND TO US OF FLOOR OR ROOF SLAB ABOVE.
    - H: DENOTES PERIMETER DIVIDER TO EXTEND BELOW ASSEMBLY FROM US OF ACCESS FLOOR TO US SLAB BELOW. REFER TO A4025.
    - I: DENOTES PARTITION EXTENDING FROM US ACCESS FLOOR TO US OF FLOOR OR ROOF SLAB ABOVE.
  - 1.9 ULIC LISTINGS PROVIDED FOR FIRE RATED PARTITIONS ARE FOR REFERENCE ONLY. PROVIDE APPROPRIATE MANUFACTURER SPECIFIC ULIC LISTINGS FOR REVIEW AS REQUIRED IN THE SPECIFICATIONS.
  - 1.10 PROVIDE PLYWOOD FOR ELECTRICAL PANEL MOUNTING AS REQUIRED. REFER TO ELECTRICAL DRAWINGS FOR QUANTITY AND LOCATION.
  - 1.11 PROVIDE PLYWOOD BACKING FOR AV DEVICES MOUNTING SUPPORT. REFER TO AVIT DRAWINGS FOR QUANTITY AND LOCATION.
2. CONCRETE MASONRY UNIT WALLS AND PARTITIONS:
  - 2.1 ALL CONCRETE MASONRY UNIT WALLS AND PARTITIONS TO US OF FLOOR OR ROOF SLAB ABOVE, UNLESS NOTED OTHERWISE. AT ACCESS FLOORS, CONCRETE MASONRY UNIT PARTITIONS EXTEND FROM STRUCTURAL SLAB BELOW UNLESS OTHERWISE INDICATED.
  - 2.2 PROVIDE COMPRESSIBLE JOINT FILLER CONTINUOUS AT TOP OF ALL CMU WALLS AND PARTITIONS. SEAL JOINTS WHERE EXPOSED. PROVIDE FIRESTOPPING AND SMOKE SEALS AT PERIMETER JOINTS AND PENETRATIONS IN FIRE RATED PARTITIONS.
  - 2.3 PROVIDE LATERAL BRACING AT TOP OF CMU WALLS AND PARTITIONS. REFER TO STRUCTURAL FOR DETAILS.
  - 2.4 PROVIDE REINFORCEMENT OF CMU WALLS AND PARTITIONS AS REQUIRED BY STRUCTURAL.
3. FIRE SEPARATIONS:
  - 3.1 REFER TO FIRE SEPARATION PLANS - FIRE SEPARATION REQUIREMENTS.
  - 3.2 AT ALL FIRE RATED PARTITIONS, INSTALL CONTINUOUS FIRESTOPPING AND SMOKE SEALS AT ALL PERIMETER JOINTS AND PENETRATIONS.
  - 3.3 AT FIRESTOPPED PANELS, INSTALL LATERAL FIRE ELECTRICAL PANELS. GENERAL NOTES: BRATED WALLS PROVIDE CONTINUITY OF THE REQUIRED RATING. BOARD AND ANCHORS N/A PANEL.
    1. REFER TO BUILDING LEANING'S SCHEDULE FOR EXTERIOR WALL, PARTITION, ROOF, CEILING AND GYPSUM TYPES.
  - 3.4 REFER TO MECHANICAL AND ELECTRICAL DRAWINGS FOR ADDITIONAL REQUIREMENTS.
  - 3.5 AT LOCATIONS WHERE MECH. DUCTS INTERFERE WITH FULL HEIGHT CONSTRUCTION OF INTERIOR PARTITIONS, OFFICE PARTITION, ABOVE CEILING AND BRACE AS REQUIRED. MAINTAIN FIRE SEPARATION SOUND RATING OF PARTITION. OFFSETTING OF PARTITIONS WILL ONLY BE PERMITTED WHERE OUTCROCK CANNOT BE POSITIONED.
4. ALL DIMENSIONS ARE TAKEN TO FACE OF MASONRY OR CONCRETE STUD PARTITIONS, DIMENSIONS TAKEN TO FACE OF GYPSUM BOARD, UNLESS OTHERWISE NOTED.
5. INCREASE THICKNESS OF WALLS OR FURRING WALL THICKNESS AS REQUIRED TO ACCOMMODATE MECHANICAL AND ELECTRICAL PANELS AND SERVICES. MAINTAIN FIRE SEPARATION AROUND BACK OF PANELS WHERE APPLICABLE.
6. FOR DIMENSIONS OF CONCRETE REFER TO SLAB EDGE DRAWINGS.

**Diamond Schmitt Architects**  
**KWC Architects Inc.**  
Architects in Joint Venture for the OPL/LAC Joint Facility  
384 Adelaide Street West, Suite 110, Toronto, Canada M5H1B7  
Tel: 416 862 8800 Fax: 416 862 5508 info@dsai.ca www.dsai.ca



**OTTAWA PUBLIC LIBRARY AND  
LIBRARY AND ARCHIVES CANADA  
JOINT FACILITY**

FLOOR PLAN - LEVEL 3

Scale: As Indicated  
Project No: OSA 1855 / KWC 1909  
Date: 12 JUNE 2020


**A106**  
DWG # 18176

DOT-12-20-077



1. **GYPSUM BOARD PARTITIONS AND FURRING:**
- 1.1 EXTEND GYPSUM BOARD PARTITIONS FULL HEIGHT TO U/S OF FLOOR OR FLOOR SLAB ABOVE, UNLESS OTHERWISE INDICATED. AT ACCESS DOORS, GYPSUM BOARD PARTITIONS ARE TO BE SYSTEM TO STRUCTURAL SLAB BELOW UNLESS OTHERWISE INDICATED.
- 1.2 AT NON-RATED FIRE SEPARATIONS, ACUSTIC AND JOINT RATED PARTITIONS, PROVIDE JOINT SEALANT AT PERIMETER JOINTS AND ALL TRANSOM JOINTS THROUGH PARTITIONS.
- 1.3 PROVIDE BACKER PLATES FOR HANDRAIL, SUPPORT, BUMPER RAILS, WALL MOUNTED MIRROR, WASHROOM ACCESSORIES, TACK BOARDS AND WRITING SURFACES ETC. REFER TO PLANS FOR EXTENT AND FINISHES.
- 1.4 AT PARTITIONS TO RECEIVE CERAMIC TILE WALL FINISH PROVIDE TILE BACKER BOARD IN LIEU OF GYPSUM BOARD BEHIND TILES. BACKER BOARD TO BE FIRE RATED PARTITION TO RECEIVE TILES PARTITIONS.
- 1.5 AT FIRE RATED PARTITIONS, ACCESS DOOR RELATED PARTITIONS, PROVIDE OPPOSITE SIDES OF PARTITION TO BE STAGGERED MINIMUM 600mm.
- 1.6 PERFORM FINISH SCHEDULE FOR INTERIOR FINISHES.
- 1.7 PROVIDE FURRING TO BE 150mm ABOVE FINISHED CEILING UNLESS OTHERWISE NOTED.
- 1.8 SURFACES FOR GYPSUM BOARD PARTITIONS AND FURRING:

- [illegible]



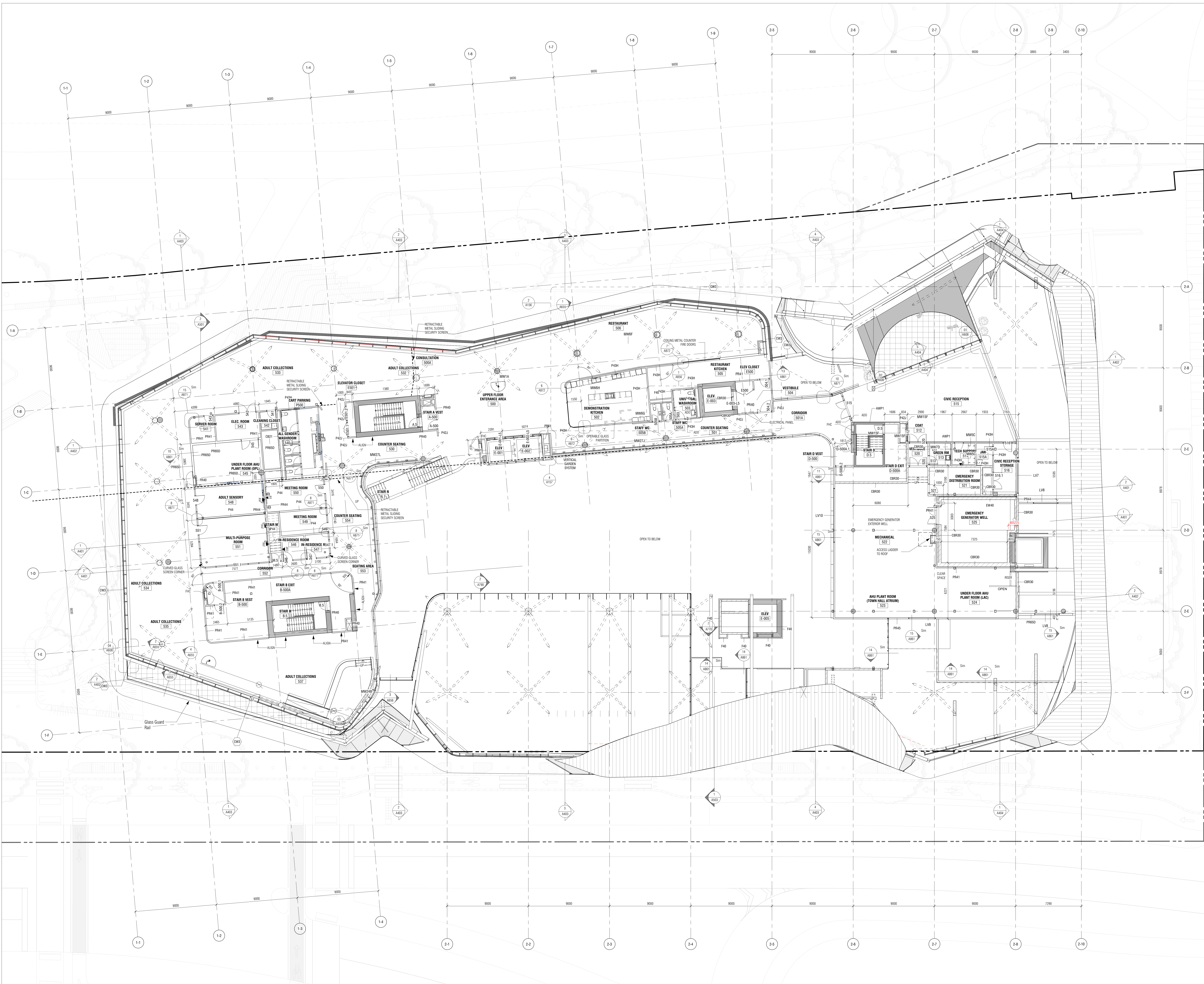
OTTAWA PUBLIC LIBRARY AND  
LIBRARY AND ARCHIVES CANADA  
JOINT FACILITY

Scale: As indicated  
Project No: DSA 1855 / KWC 1909  
Date: 12 JUNE 2020



BM 1997.11850-CP, LAC 1907.1855-ARCH/CSA-Bldg-250.rvt

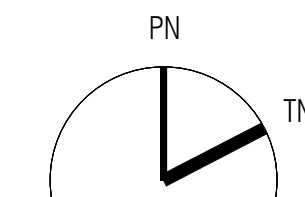
2020-11-24 12:18:39 AM



ISSUED			
No.	Date	Issued For	Description
0	2020-05-28	ISSUED FOR CD 30%	
1	2020-09-29	ISSUED FOR CD 60%	
2	2020-10-13	ISSUED FOR CD 80% (ADDENDUM 2)	
3	2020-11-16	RE-ISSUED FOR SITE PLAN CONTROL	
4	2020-11-23	ISSUED FOR SPEC RESPONSE	

- GENERAL NOTES - PARTITIONS:**
- GYPSUM BOARD PARTITIONS AND FURNISHING:**
    - 1.1 EXTEND GYPSUM BOARD PARTITIONS FULL HEIGHT TO US OF FLOOR OR ROOF SLAB ABOVE, UNLESS OTHERWISE INDICATED. AT ACCESS FLOORS, GYPSUM BOARD PARTITIONS EXTEND TO THE CEILING SLAB BELOW UNLESS OTHERWISE INDICATED.
    - 1.2 AT NON-RATED FIRE SEPARATIONS, ACUSTIC AND FIRE RATED PARTITIONS, PROVIDE JOINT SEALANT AT PERIMETER JOINTS AND ALL PENETRATIONS THROUGH GYPSUM BOARD.
    - 1.3 PROVIDE BACKER PLATES FOR HANDRAIL SUPPORT, BUMPER WALLS, WALL MOUNTED MILL WORK, WASHROOM ACCESSORIES, TACK BOARDS AND MOUNTING SURFACES ETC. REFER TO PLANS FOR EXTENT AND LOCATION.
    - 1.4 AT PARTITIONS TO RECEIVE CERAMIC TILE WALL FINISH PROVIDE TILE BACKER BOARD IN LIEU OF GYPSUM BOARD BEHIND TILES. BACKER BOARD TO BE RATED TYPE AT FIRE RATED PARTITIONS.
    - 1.5 AT ACUSTIC PARTITIONS, RECESSED ELECTRICAL BOXES ON OPPOSITE SIDES OF PARTITION TO BE STAGGERED MINIMUM 600mm.
    - 1.6 SET ROOM FINISH SCHEDULE FOR INTERIOR FINISHES.
    - 1.7 HEIGHT OF FURNISHING WALL TO BE 150mm ABOVE FINISHED CEILING UNLESS OTHERWISE NOTED.
    - 1.8 SUPPLIES FOR GYPSUM BOARD PARTITIONS AND FURNISHING:
      - A: DENOTES ASSEMBLY TO EXTEND MIN 150mm ABOVE FINISHED CEILING.
      - B: DENOTES ASSEMBLY TO STOP AT US OF FINISHED CEILING.
      - C: DENOTES LOW WALL - HEIGHT INDICATED ON FLOOR PLANS. CAP WITH GB UNLESS OTHERWISE INDICATED.
      - D: DENOTES ASSEMBLY FINISHES GB WITH IMPACT RESISTANT GB ON ONE SIDE ONLY (REFER TO RFD).
      - E: DENOTES FINISHED METAL SUPPORT SYSTEM.
      - F: DENOTES FURNISHING TO EXTEND TO US OF FLOOR OR ROOF SLAB ABOVE.
      - G: DENOTES PLenum DIVIDER TO EXTEND BELOW ASSEMBLY FROM US OF ACCESS FLOOR TO US SLAB BELOW. REFER TO A402.
      - H: DENOTES PARTITION EXTENDING FROM US OF ACCESS FLOOR TO US OF FLOOR OR ROOF SLAB ABOVE.
    - 1.9 ULIC LISTINGS PROVIDED FOR FIRE RATED PARTITIONS ARE FOR REFERENCE ONLY. PROVIDE APPROPRIATE MANUFACTURER SPECIFIC ULIC LISTINGS FOR REVIEW AS REQUIRED IN THE SPECIFICATIONS.
    - 1.10 PROVIDE PLYWOOD FOR ELECTRICAL PANEL MOUNTING AS REQUIRED. REFER TO ELECTRICAL DRAWINGS FOR QUANTITY AND LOCATION.
    - 1.11 PROVIDE PLYWOOD BACKING FOR AV DEVICES MOUNTING SUPPORT. REFER TO AVIC DRAWINGS FOR QUANTITY AND LOCATION.
  - CONCRETE MASONRY UNIT WALLS AND PARTITIONS:**
    - 2.1 ALL CONCRETE MASONRY UNIT WALLS AND PARTITIONS TO US OF FLOOR OR ROOF SLAB ABOVE, UNLESS NOTED OTHERWISE. AT ACCESS FLOORS, CONCRETE MASONRY UNIT PARTITIONS EXTEND FROM STRUCTURAL SLAB BELOW UNLESS OTHERWISE INDICATED.
    - 2.2 PROVIDE COMPRESSIBLE JOINT FILLER CONTINUOUS AT TOP OF ALL CMU WALLS AND PARTITIONS. SEAL JOINTS WHERE EXPOSED. PROVIDE FIRESTOPPING AND SMOKE SEALS AT PERIMETER JOINTS AND PENETRATIONS IN FIRE RATED PARTITIONS.
    - 2.3 PROVIDE LATERAL BRACING AT TOP OF CMU WALLS AND PARTITIONS. REFER TO STRUCTURAL FOR DETAILS.
    - 2.4 PROVIDE REINFORCEMENT OF CMU WALLS AND PARTITIONS AS REQUIRED BY STRUCTURAL.
  - FIRE SEPARATIONS:**
    - 3.1 REFER TO FIRE SEPARATION PLANS - FIRE SEPARATION REQUIREMENTS.
    - 3.2 AT ALL FIRE RATED PARTITIONS, INSTALL CONTINUOUS FIRESTOPPING AND SMOKE SEALS AT ALL PERIMETER JOINTS AND PENETRATIONS.
    - 3.3 AT PENETRATED PANEL INSTALLATIONS OF ELECTRICAL PANELS, GYPSUM BOARD PARTITIONS PROVIDE CONTINUITY OF THE REQUIRED RATING BOARD AND PROVIDE THE PANEL.
      - 1. REFER TO BUILDING DEPARTMENT SCHEDULE FOR EXTERIOR WALL, PARTITION, ROOF, CEILING AND GYPSUM TYPES.
      - 2. REFER TO MECHANICAL AND ELECTRICAL DRAWINGS FOR ADDITIONAL REQUIREMENTS.
    - 3.4 AT LOCATIONS WHERE MECH. DUCTS INTERFERE WITH FULL HEIGHT CONSTRUCTION OF INTERIOR PARTITIONS, OFFSET PARTITION ABOVE CEILING AND BRACE AS REQUIRED. MAINTAIN FIRE SEPARATION SOUND RATING OF PARTITION. OFFSETTING OF PARTITIONS WILL ONLY BE PERMITTED WHERE DUCTWORK CANNOT BE POSITIONED.
  - ALL DIMENSIONS ARE TAKEN TO FACE OF MASONRY OR CONCRETE AT MASONRY AND CONCRETE WALLS AND PARTITIONS. AT STEEL STUD PARTITIONS, DIMENSIONS ARE TAKEN TO FACE OF GYPSUM BOARD, UNLESS OTHERWISE NOTED.**
  - INCREASE THICKNESS OF WALLS OR FURNITURE WALL THICKNESS AS REQUIRED TO ACCOMMODATE MECHANICAL AND ELECTRICAL PANELS AND SERVICES. MAINTAIN FIRE SEPARATION AROUND BACK OF PANELS WHERE APPLICABLE.**
  - FOR DIMENSIONS OF CONCRETE REFER TO SLAB EDGE DRAWINGS.**

**Diamond Schmitt Architects**  
**KWC Architects Inc.**  
Architects in Joint Venture for the OPLAC Joint Facility  
384 Adelaide Street West, Suite 1100, Toronto, Canada M5H 1B7  
Tel: 416 862 8800 Fax: 416 862 5508 info@dsai.ca www.dsai.ca



**OTTAWA PUBLIC LIBRARY AND  
LIBRARY AND ARCHIVES CANADA  
JOINT FACILITY**

**FLOOR PLAN - LEVEL 5**

Scale: As Indicated  
Project No: OSA 1855 / KWC 1909  
Date: 12 JUNE 2020

**A108**  
DWG # 18176

D07-12-20-077



BM 390/11850-0P1-LAC-19011805-ARCH-05A-Building-250.rvt

2020-11-24 12:18:03 AM



ISSUED			
No.	Date	Description	
0	2020-05-28	ISSUED FOR CD 30%	
1	2020-09-29	ISSUED FOR CD 50%	
2	2020-11-18	RE ISSUED FOR SITE PLAN CONTROL	
3	2020-11-23	ISSUED FOR SPC RESPONSE	

- GENERAL NOTES - PARTITIONS:**
- GYPSUM BOARD PARTITIONS AND FURRING:**
    - 1.1 EXTEND GYPSUM BOARD PARTITIONS FULL HEIGHT TO U/S OF FLOOR OR ROOF SLAB ABOVE, UNLESS OTHERWISE INDICATED. AT ACCESS FLOORS, GYPSUM BOARD PARTITIONS EXTEND TO THE CEILING SLAB BELOW UNLESS OTHERWISE INDICATED.
    - 1.2 AT NON-RATED FIRE SEPARATIONS, ACUSTIC, AND FIRE RATED PARTITIONS, PROVIDE JOINT SEALANT AT PERIMETER JOINTS AND ALL PENETRATIONS THROUGH GYPSUM BOARD.
    - 1.3 PROVIDE BACKER PLATES FOR HANDRAIL SUPPORT, BUMPER WALLS, WALL MOUNTED MILL WORK, HANDSHOWN ACCESSORIES, RACK BOARDS AND MOUNTING SURFACES ETC. REFER TO PLANS FOR EXTENT AND LOCATIONS.
    - 1.4 AT PARTITIONS TO RECEIVE CERAMIC TILE WALL FINISH PROVIDE TILE BACKER BOARD IN U/S OF GYPSUM BOARD BEHIND TILES. BACKER BOARD TO BE THE RATED TYPE AT FIRE RATED PARTITIONS.
    - 1.5 AT ACUSTIC PARTITIONS, RECESSED ELECTRICAL BOXES ON OPPOSITE SIDES OF PARTITION TO BE STAGGERED MINIMUM 600mm.
    - 1.6 SEE ROOM FINISH SCHEDULE FOR INTERIOR FINISHES.
    - 1.7 HEIGHT OF FURRING WALL TO BE 150mm ABOVE FINISHED CEILING UNLESS OTHERWISE NOTED.
    - 1.8 SUPPLIES FOR GYPSUM BOARD PARTITIONS AND FURRING:
      - A: DENOTES ASSEMBLY TO EXTEND MIN 150mm ABOVE FINISHED CEILING.
      - B: DENOTES ASSEMBLY TO STOP AT U/S OF FINISHED CEILING.
      - C: DENOTES LOW WALL - HEIGHT INDICATED ON FLOOR PLANS.
      - D: CAP WITH GB UNLESS OTHERWISE INDICATED.
      - E: DENOTES ASSEMBLY PER PLACES GB WITH IMPACT RESISTANT GB ON ONE SIDE ONLY (REFER TO SP5).
      - F: DENOTES ASSEMBLY PER PLACES GB WITH IMPACT RESISTANT GB ON BOTH SIDES.
      - G: DENOTES FINISHED METAL SUPPORT SYSTEM.
      - H: DENOTES FURRING TO EXTEND TO U/S OF FLOOR OR ROOF SLAB ABOVE.
      - I: DENOTES PLUMBO DIVIDER TO EXTEND BELOW ASSEMBLY FROM U/S OF ACCESS FLOOR TO U/S SLAB BELOW. REFER TO JACO2.
      - J: DENOTES PARTITION EXTENDS FROM I/O ACCESS FLOOR TO U/S OF FLOOR OR ROOF SLAB ABOVE.
    - 1.9 U/LC LISTINGS PROVIDED FOR FIRE RATED PARTITIONS ARE FOR REFERENCE ONLY. PROVIDE APPROPRIATE MANUFACTURER SPECIFIC U/LC LISTINGS FOR REVIEW AS REQUIRED IN THE SPECIFICATIONS.
    - 1.10 PROVIDE PLYWOOD FOR ELECTRICAL PANEL MOUNTING AS REQUIRED. REFER TO ELECTRICAL DRAWINGS FOR QUANTITY AND LOCATION.
    - 1.11 PROVIDE PLYWOOD BACKING FOR AV DEVICES MOUNTING SUPPORT. REFER TO AVL DRAWINGS FOR QUANTITY AND LOCATION.
  - CONCRETE MASONRY UNIT WALLS AND PARTITIONS:**
    - 2.1 ALL CONCRETE MASONRY UNIT WALLS AND PARTITIONS TO U/S OF FLOOR OR ROOF SLAB ABOVE, UNLESS NOTED OTHERWISE. AT ACCESS FLOORS, CONCRETE MASONRY UNIT PARTITIONS EXTEND FROM STRUCTURAL SLAB BELOW UNLESS OTHERWISE INDICATED.
    - 2.2 PROVIDE COMPRESSIBLE JOINT FILLER CONTINUOUS AT TOP OF ALL CMU WALLS AND PARTITIONS. SEAL JOINTS WHERE EXPOSED. PROVIDE FIRESTOPPING AND SMOKE SEALS AT PERIMETER JOINTS AND PENETRATIONS IN FIRE RATED PARTITIONS.
    - 2.3 PROVIDE LATERAL BRACING AT TOP OF CMU WALLS AND PARTITIONS. REFER TO STRUCTURAL FOR DETAILS.
    - 2.4 PROVIDE REINFORCEMENT OF CMU WALLS AND PARTITIONS AS REQUIRED BY STRUCTURAL.
  - FIRE SEPARATIONS:**
    - 3.1 REFER TO FIRE SEPARATION PLANS - FIRE SEPARATION REQUIREMENTS.
    - 3.2 AT ALL FIRE RATED PARTITIONS, INSTALL CONTINUOUS FIRESTOPPING AND SMOKE SEALS AT ALL PERIMETER JOINTS AND PENETRATIONS.
    - 3.3 AT PENETRATED PANEL INSTALLATIONS OF ELECTRICAL PANELS, GYPSUM BOARD PARTITIONS PROVIDE CONTINUITY OF THE REQUIRED RATING, BOARD AND ANCHORS TO PANEL.
      - REFER TO BUILDING DEPARTMENT SCHEDULE FOR EXTERIOR WALL, PARTITION, ROOF, CEILING AND CURTAIN TYPES.
    - 3.4 AT LOCATIONS WHERE MECH. DUCTS INTERFERE WITH FULL HEIGHT CONSTRUCTION OF INTERIOR PARTITIONS, OFFSET PARTITION ABOVE CEILING AND BRACE AS REQUIRED. MAINTAIN FIRE SEPARATION SOUND RATING OF PARTITION. OFFSETTING OF PARTITIONS WILL ONLY BE PERMITTED WHERE DUCTWORK CANNOT BE POSITIONED.
  - ALL DIMENSIONS ARE TAKEN TO FACE OF MASONRY OR CONCRETE AT MASONRY AND CONCRETE WALLS AND PARTITIONS. AT STEEL STUD PARTITIONS, DIMENSIONS ARE TAKEN TO FACE OF GYPSUM BOARD, UNLESS OTHERWISE NOTED.
  - INCREASE THICKNESS OF WALLS OR FURR OUT WALL THICKNESS AS REQUIRED TO ACCOMMODATE MECHANICAL AND ELECTRICAL PANELS AND SERVICES. MAINTAIN FIRE SEPARATION AROUND BACK OF PANELS WHERE APPLICABLE.
  - FOR DIMENSIONS OF CONCRETE REFER TO SLAB EDGE DRAWINGS.

**Diamond Schmitt Architects**  
**KWC Architects Inc.**  
Architects in Joint Venture for the OPLAC Joint Facility  
384 Adelaide Street West, Suite 110, Toronto, Canada M5H1R7  
Tel: 416 862 8800 Fax: 416 862 5508 info@dsai.ca www.dsai.ca

**OTTAWA PUBLIC LIBRARY AND  
LIBRARY AND ARCHIVES CANADA  
JOINT FACILITY**

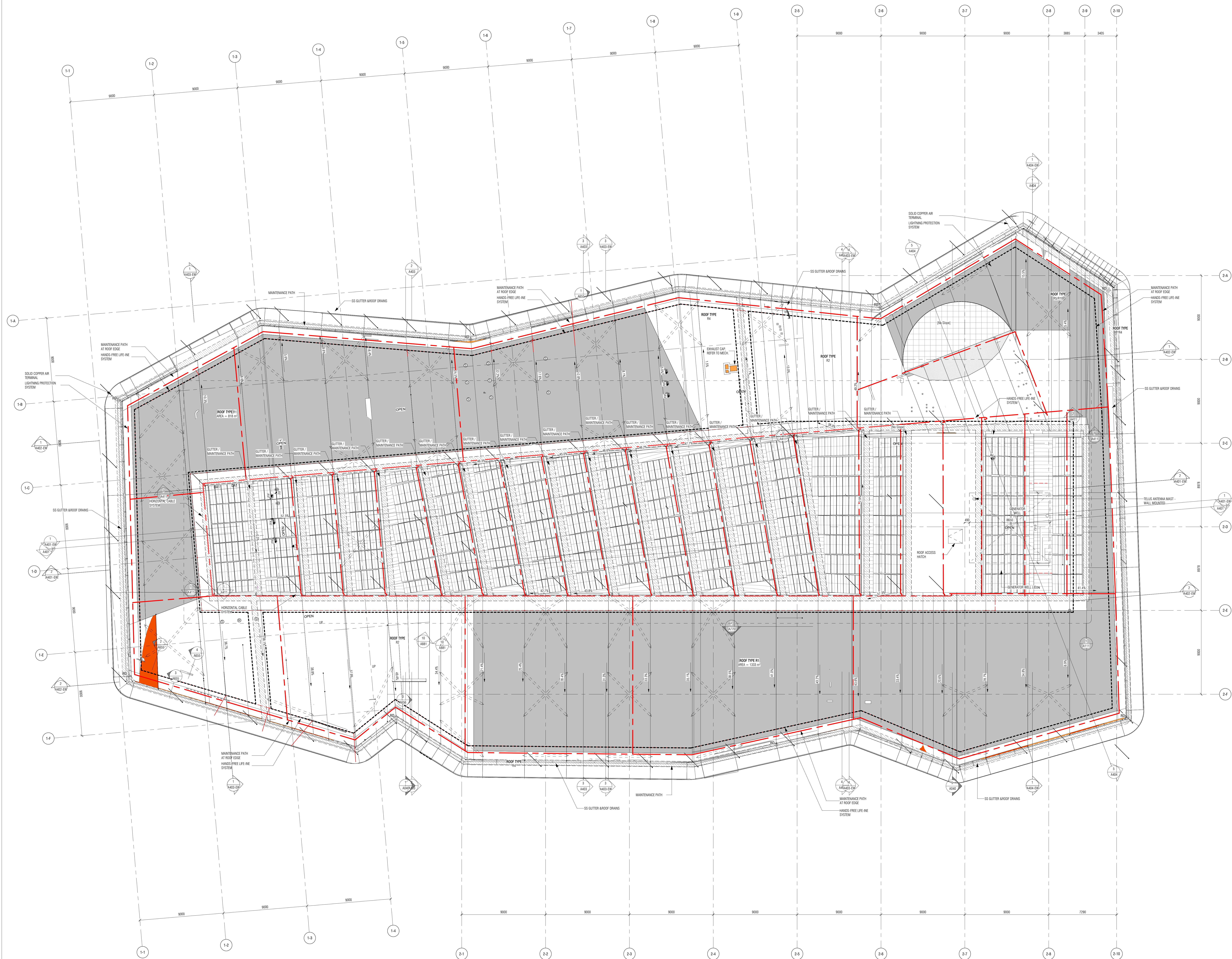
FLOOR PLAN - LEVEL 5 MEZZANINE

Scale: As Indicated  
Project No: OSA 1855 / KWC 1909  
Date: 12 JUNE 2020

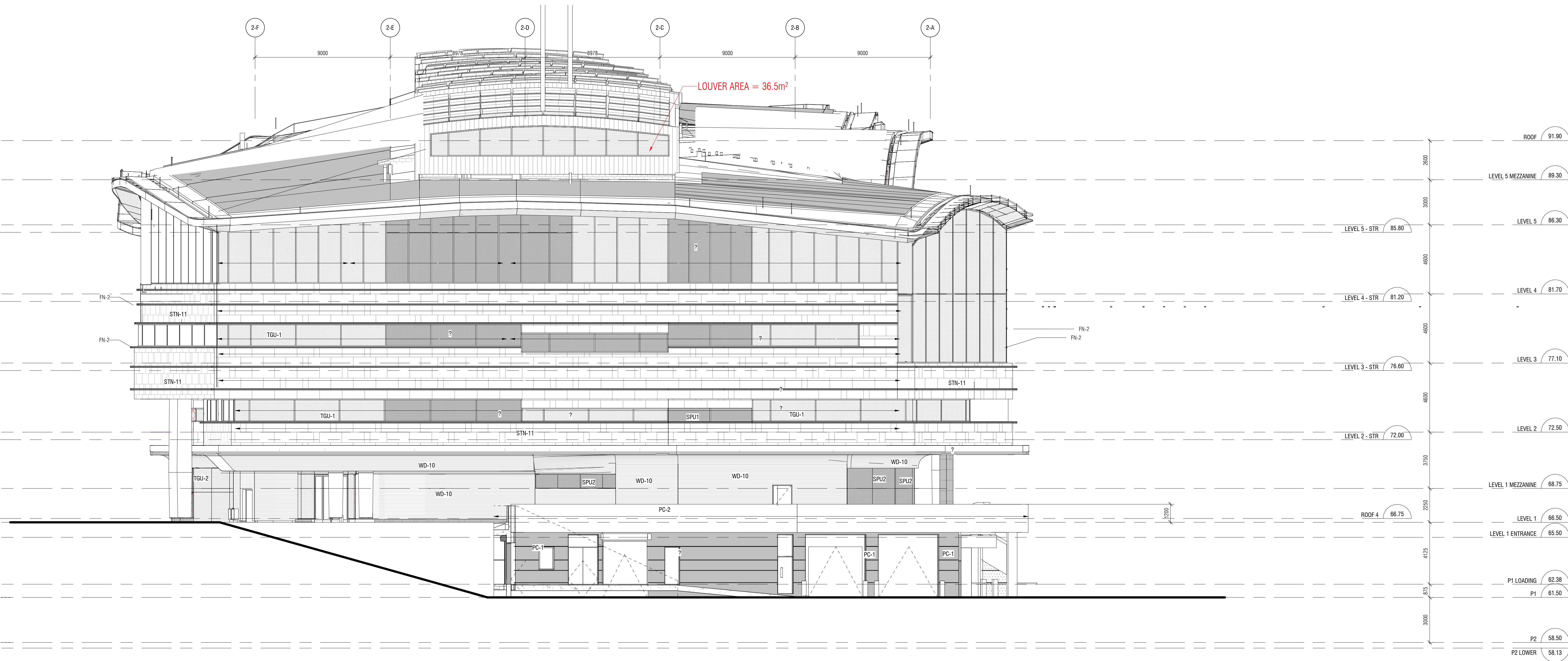
**A109**  
DWG # 18176

D07-12-20-077

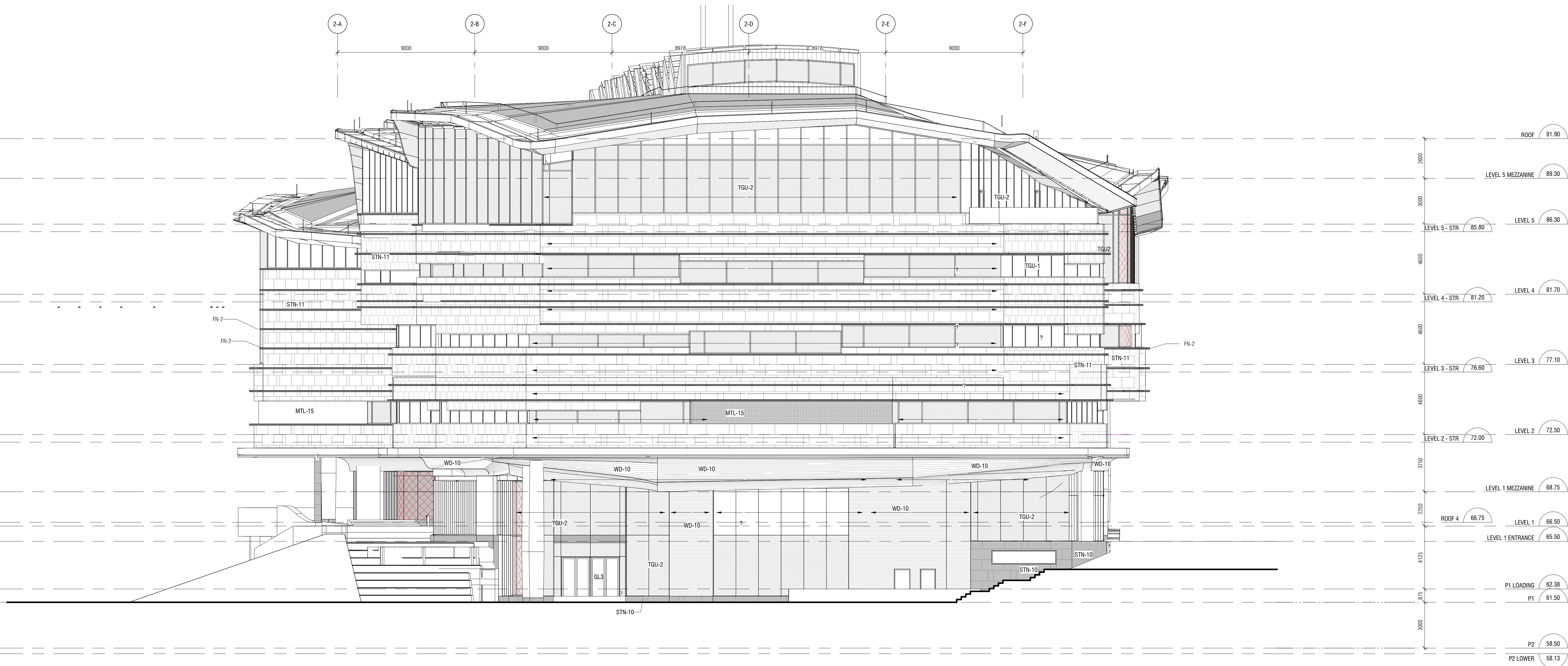








1 NORTH ELEVATION  
A301 1:125



2 SOUTH ELEVATION  
A301 1:125

CONTRACTOR MUST CHECK & REPEAL ALL DIMENSIONS ON THE JOB.  
DO NOT SCALE DRAWINGS.  
ALL DIMENSIONAL SPECIFICATIONS AND RELATED DOCUMENTS ARE THE COPYRIGHT PROPERTY OF THE ARCHITECT AND SHALL BE KEPT UNDER APPROPRIATE PROTECTION OF COPYRIGHT.  
SPECIFICATIONS AND RELATED DOCUMENTS ARE NOT TO BE REPRODUCED OR TRANSMITTED IN ANY FORM OR BY ANY MEANS, ELECTRONIC OR MECHANICAL, INCLUDING PHOTOCOPYING, RECORDING, OR BY ANY INFORMATION STORAGE AND RETRIEVAL SYSTEM, WITHOUT THE WRITTEN PERMISSION OF THE ARCHITECT.  
THIS DRAWING IS NOT TO BE USED FOR CONSTRUCTION UNLESS ISSUED BY THE ARCHITECT.

No.	Date	Description
0	2020-05-28	ISSUED FOR CD 30%
1	2020-09-29	ISSUED FOR CD 60%
2	2020-10-13	ISSUED FOR CD 80% (ADDENDUM 2)
3	2020-11-23	ISSUED FOR SPC RESPONSE

#### EXTERIOR MATERIALS LEGEND:

- STN-11  
NATURAL STONE  
ALGONQUIN Limestone, VENE CUT  
HONED. MAX PANEL SIZE 700mm x 1500mm
- STN-10  
NATURAL STONE  
GRANITE, NORFOLK BLACK  
FLYING CUT, HONED.
- PC-1  
PRECAST CONCRETE  
CUSTOM FINISH - LIGHT GREY
- PC-2  
PRECAST CONCRETE  
CUSTOM FINISH - CHARCOAL
- WD-10  
WESTERN RED CEDAR  
150mm x 80mm HORIZONTAL WOOD  
SHIMMING
- MTL-10, PH-1, PH-2 FLASHINGS  
METAL PANEL, EXTRUSION OR  
BREAK SHAPE  
HIGH PERFORMANCE EXTERIOR  
COATING CUSTOM COLOUR  
BRONZE METALIC
- MTL-15  
ARCHITECTURAL METAL MESH  
CUSTOM COLOUR - BRONZE
- DSGL TGL SPY  
CLEAR GLASS WITH BRID FREEDLY  
FRIT PATTERN

**Diamond Schmitt Architects**  
**KWC Architects Inc.**  
Architects in Joint Venture for the OPL/LAC Joint Facility  
354 Adelaide Street West, Suite 100, Toronto, Canada M5V 1R7  
Tel: 416 862 8800 Fax: 416 862 5508 info@dsai.ca www.dsai.ca

**OTTAWA PUBLIC LIBRARY AND  
LIBRARY AND ARCHIVES CANADA  
JOINT FACILITY**

#### ELEVATIONS

Scale: As indicated  
Project No: DSA 1855 / AWC 1909  
Date: 12 JUNE 2020

A301



CONTRACTOR MUST CHECK & VERIFY ALL DIMENSIONS ON THE JOB.  
DO NOT SCALE DRAWINGS.  
ALL DIMENSIONS, SPECIFICATIONS AND RELATED DOCUMENTS ARE THE COPYRIGHT PROPERTY OF THE ARCHITECT AND ARE NOT TO BE REPRODUCED, COPIED, REPRODUCED OR OTHERWISE REPRODUCED IN ANY MANNER WITHOUT THE WRITTEN PERMISSION OF THE ARCHITECT.  
THIS DRAWING IS NOT TO BE USED FOR CONSTRUCTION UNLESS ISSUED BY THE ARCHITECT.

ISSUED	No.	Date	Description
0	2020-05-28	ISSUED FOR CD 30%	
1	2020-09-29	ISSUED FOR CD 60%	
2	2020-10-06	ISSUED FOR CD 80% (ADDENDUM 1)	
3	2020-10-13	ISSUED FOR CD 80% (ADDENDUM 2)	
4	2020-11-23	ISSUED FOR SPC RESPONSE	

#### EXTERIOR MATERIALS LEGEND:



STN-11  
NATURAL STONE  
ALMOND/WHITE STONE, VENETIAN CUT  
HONED. MAX PANEL SIZE: 1000mm x 1000mm



STN-10  
NATURAL STONE  
GRANITE, HONED/BLACK, FLUTED CUT, HONED



PC-1  
PRECAST CONCRETE  
CUSTOM PIGMENT - LIGHT GREY



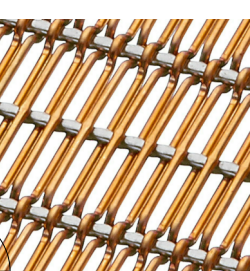
PC-2  
PRECAST CONCRETE  
CUSTOM PIGMENT - CHARCOAL



WD-10  
WESTERN RED CEDAR  
18mm x 88mm HORIZONTAL WOOD STRAPPING



MTL-10, FN-1, FN-2, FLASHINGS,  
METAL PANEL, EXTRUSION OR  
BREAK SHAPE,  
HIGH PERFORMANCE EXTERIOR  
COATING, CUSTOM COLOUR -  
BRONZE METALLIC



MTL-15  
ARCHITECTURAL METAL MESH  
CUSTOM COLOUR - BRONZE



DGL, TDU, SPV,  
CLEAR GLASS WITH BIRD FRIENDLY  
FRIT PATTERN

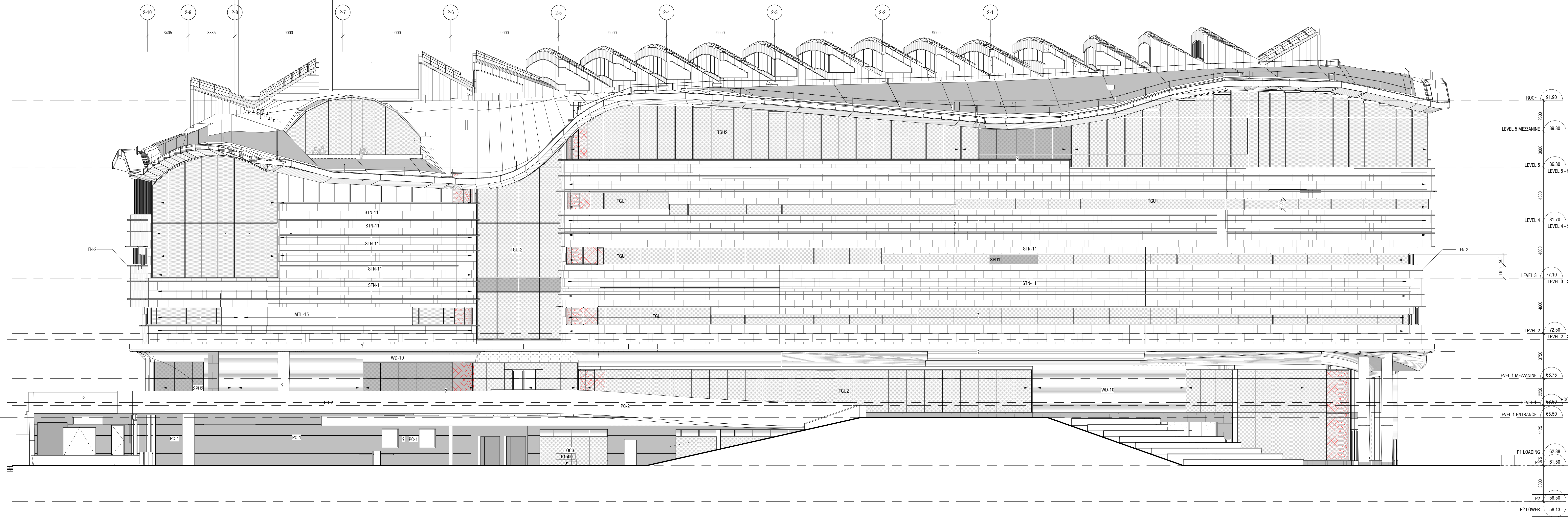
**Diamond Schmitt Architects**  
**KWC Architects Inc.**  
Architects in Joint Venture for the OPL/LAC Joint Facility  
354 Adelaide Street West, Suite 100, Toronto, Canada M5V 1R7  
Tel: 416 862 8800 Fax: 416 862 5508 info@dsai.ca www.dsai.ca

**OTTAWA PUBLIC LIBRARY AND  
LIBRARY AND ARCHIVES CANADA  
JOINT FACILITY**

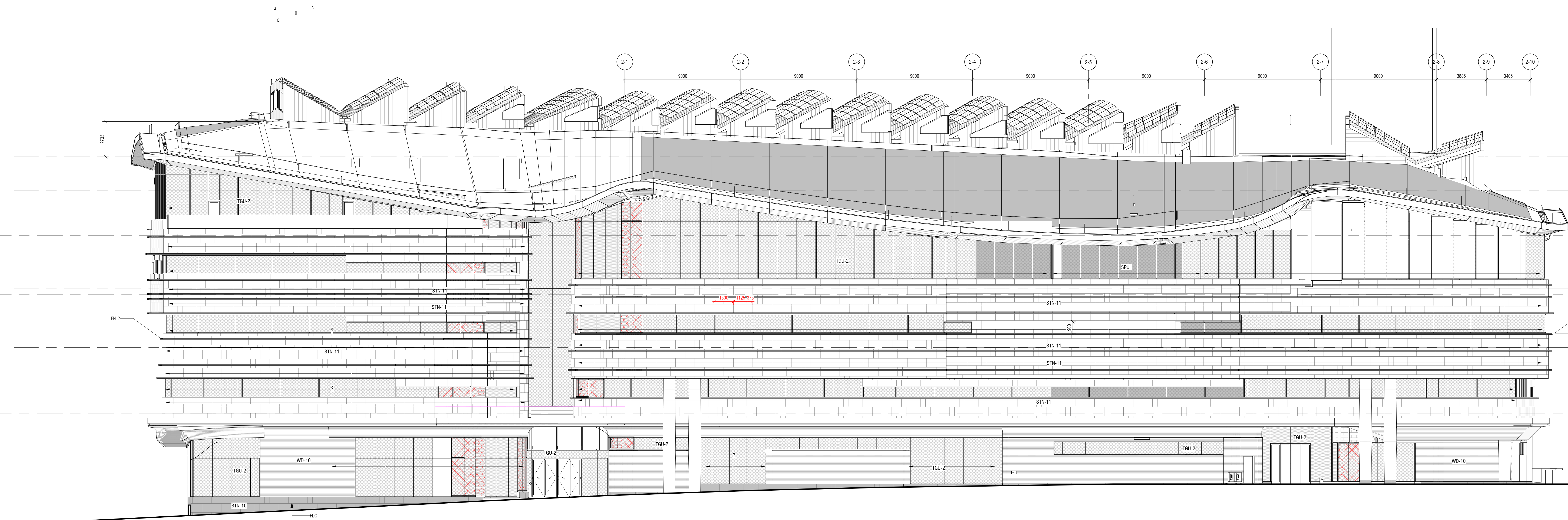
#### ELEVATIONS

Scale: As Indicated  
Project No: DSA 1855 / AWC 1909  
Date: 12 JUNE 2020

A302



1 WEST ELEVATION  
A302 1:125



2 EAST ELEVATION  
A302 1:125

BSA 380 / 1855-OP/LAC J20101855-A302-A302.dwg 25/01/20

2020-11-24 12:18:19 AM