

NOTES GÉNÉRALES General Notes

- Ces documents d'architecture sont la propriété exclusive de NEUF architect(e)s et ne peuvent être utilisés, reproduits ou copiés sans autorisation écrite préalable. / These architectural documents are the exclusive property of NEUF architect(e)s and cannot be used, copied or reproduced without written pre-authorization.
- Les dimensions apparaissant sur ces documents doivent être vérifiées par l'entrepreneur avant le début des travaux. / All dimensions appearing on these documents must be verified by the contractor prior to construction.
- Veuillez aviser l'architecte de toute dimension erreur et/ou divergences entre ces documents et ceux des autres professionnels. / The architect must be notified of all errors, omissions and discrepancies between these documents and those of the other professionals.
- Les dimensions sur ces documents doivent être lues et non mesurées. / The dimensions on these documents must be read and not measured.

STRUCTURE Structural
Adjeleian Allen Rubeli Ltd. (AAR)
 75 Albert Street, Suite 1005
 Ottawa, ON K1P 5E7
 T 613 232 5786

ARCHITECTURE DE PAYSAGE Landscape Architect
James B. Lennox & Associates Inc.
 3332 Carling Ave.
 Ottawa, ON K2H 5A8
 T 613 722 5168

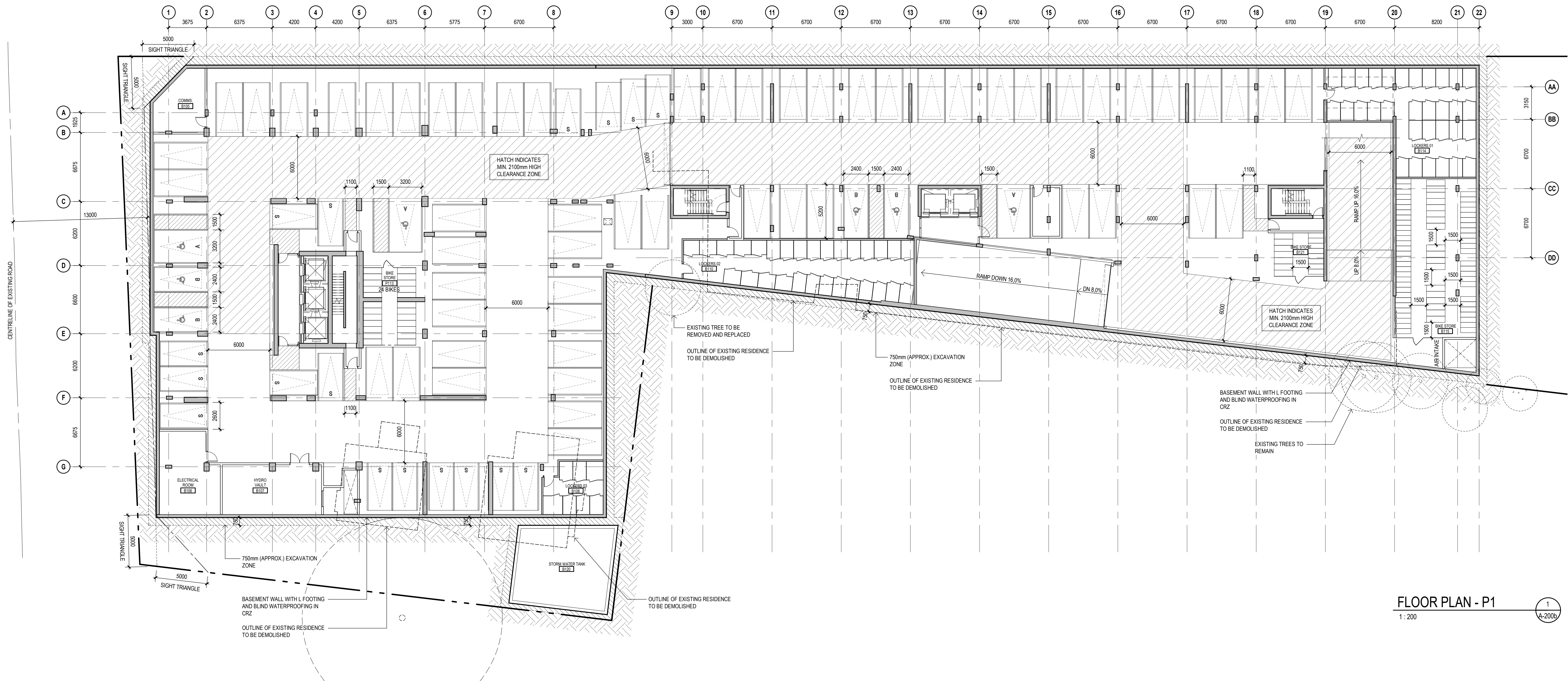
CIVIL Civil
R.V. Anderson Associates Limited
 1750 Courtwood Crescent, Suite 220
 Ottawa, ON K2C 2B5
 T 613 226 1844

HYDRAULIQUE/ÉLECTRIQUE Hydraulic/Electrical
Goodkey, Weedmark & Associates Limited (GWL)
 1688 Woodward Drive
 Ottawa, ON K2C 3R8
 T 613 727 5111

URBANISTE Urban Planner
Fotenn Planning + Design
 396 Cooper Street - Suite 300
 Ottawa, ON K2P 2P7
 T 613 730 5709

ARCHITECTES Architect
NEUF architect(e)s SENCRL
 630, St-Jacques, Montréal, QC H3B 1S6
 T 514 847 1117 NEUFarchitectes.com

SCEAU / Seal



FLOOR PLAN - P1
 1:200

SCHEDULE - STORAGE LOCKER	
TYPE	QUANTITY
BASEMENT 2	
STORAGE LOCKER 1400d x 1675w x 2100h	19
STORAGE LOCKER 1800d x 1300w x 2100h	20
39	
BASEMENT 1	
STORAGE LOCKER 1400d x 1675w x 2100h	9
STORAGE LOCKER 1800d x 1300w x 2100h	59
68	
TOTAL NO. OF STORAGE LOCKERS:	107

SCHEDULE - BICYCLE PARKING	
TYPE	QUANTITY
BASEMENT 2	
HORIZONTAL SPACE 1800Lx600W	21
21	
BASEMENT 1	
HORIZONTAL SPACE 1800Lx600W	49
VERTICAL SPACE 1500Lx500W	62
111	
GROUND LEVEL	
HORIZONTAL SPACE 1800Lx600W	35
VERTICAL SPACE 1500Lx500W	20
55	
TOTAL NO. OF BICYCLE PARKING SPACES:	187

SCHEDULE - PARKING	
TYPE	QUANTITY
BASEMENT 2	
2400mmx4600mm (SMALL)	27
2600mmx5200mm (TYP)	76
103	
BASEMENT 1	
2400mmx4600mm (SMALL)	17
2400mmx5200mm (ACCESSIBLE B)	4
2600mmx5200mm (TYP)	56
3200mmx5200mm (ACCESSIBLE A)	3
80	
TOTAL NO. OF PARKING SPACES:	183

SHEET PRINT DATE: 2020-09-23 4:27:02 PM
 CLIENT Client

OUVRAGE Project
320 McRAE AVENUE

EMPLACEMENT Location NO PROJET No.
 1976 SCOTT ST & 320 12087
 McRAE AVE
 OTTAWA, ON

NO	REVISION	DATE
1	SITE PLAN APPROVAL	2020 03 20
1.6	SITE PLAN APPROVAL RESUBMISSION	2020 09 23

Preliminary
 DO NOT USE FOR
 CONSTRUCTION

DESSINÉ PAR Drawn by VERIFIÉ PAR Checked
 DH HG
 DATE 20/03/20 ÉCHELLE Scale
 1 : 200
 TITRE DU DESSIN Drawing Title

**FLOOR PLAN - PARKING
 LEVEL 1**

REVISION Revision NO. DESSIN Dwg Number
1.6 A-2006