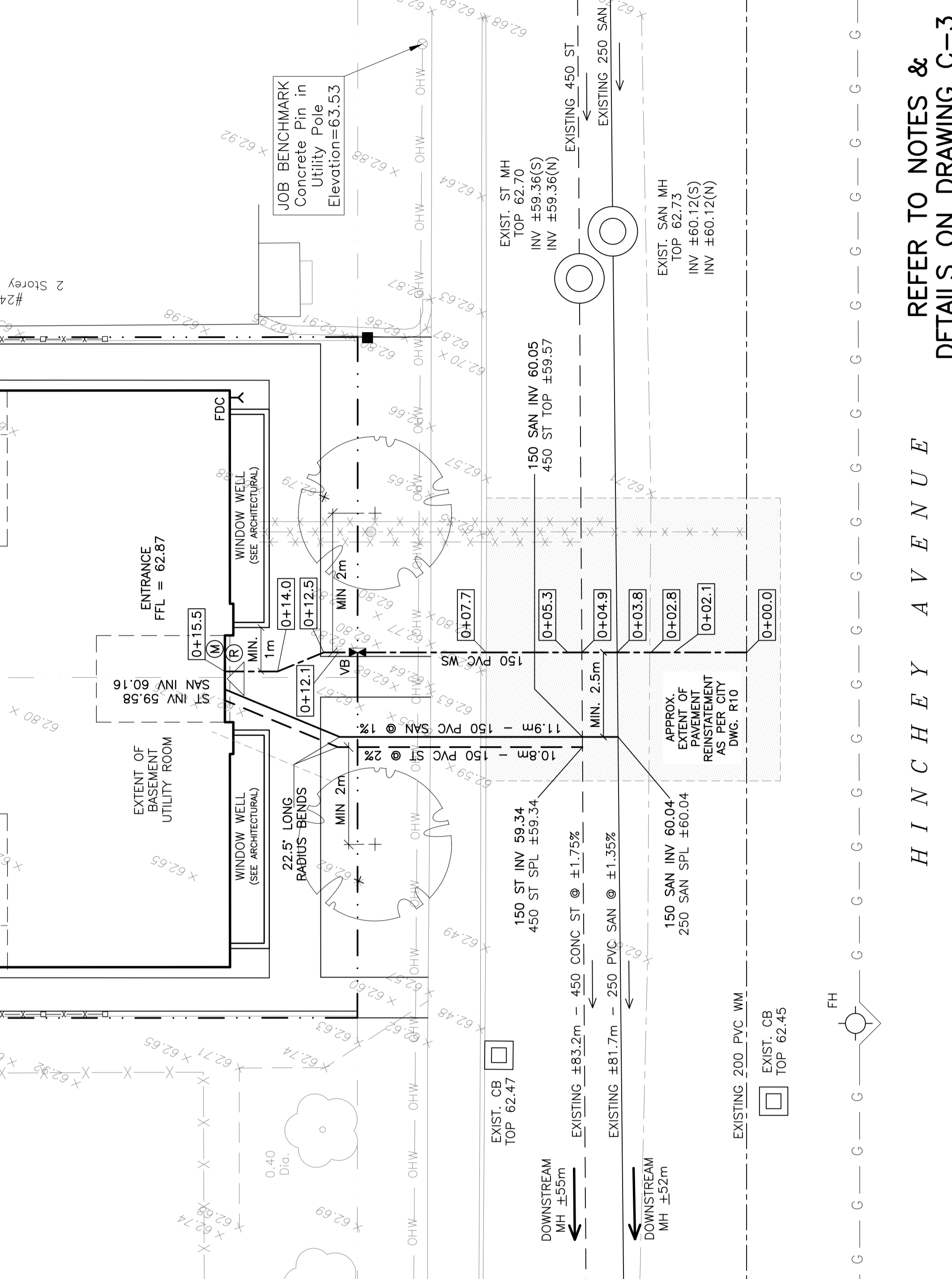
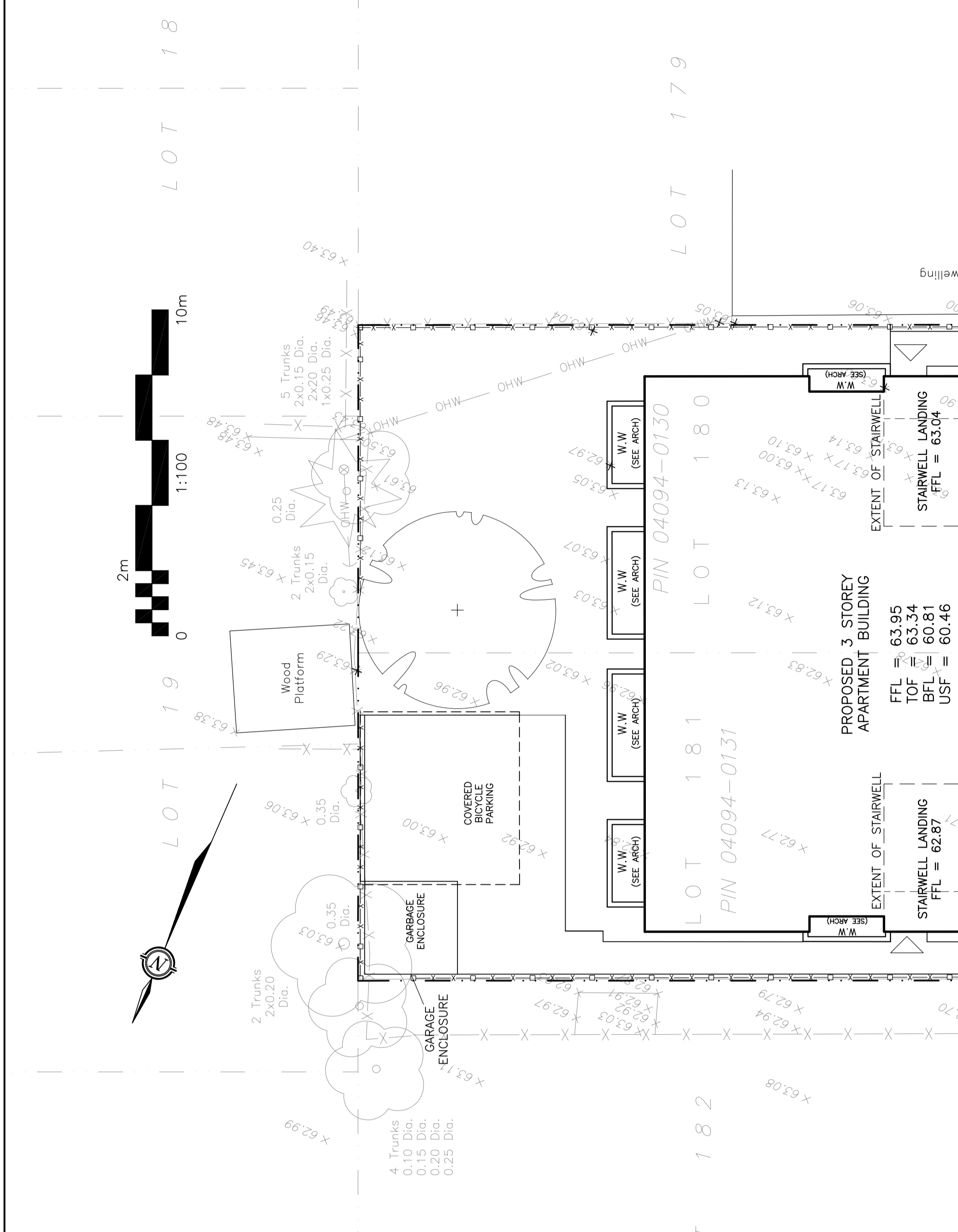
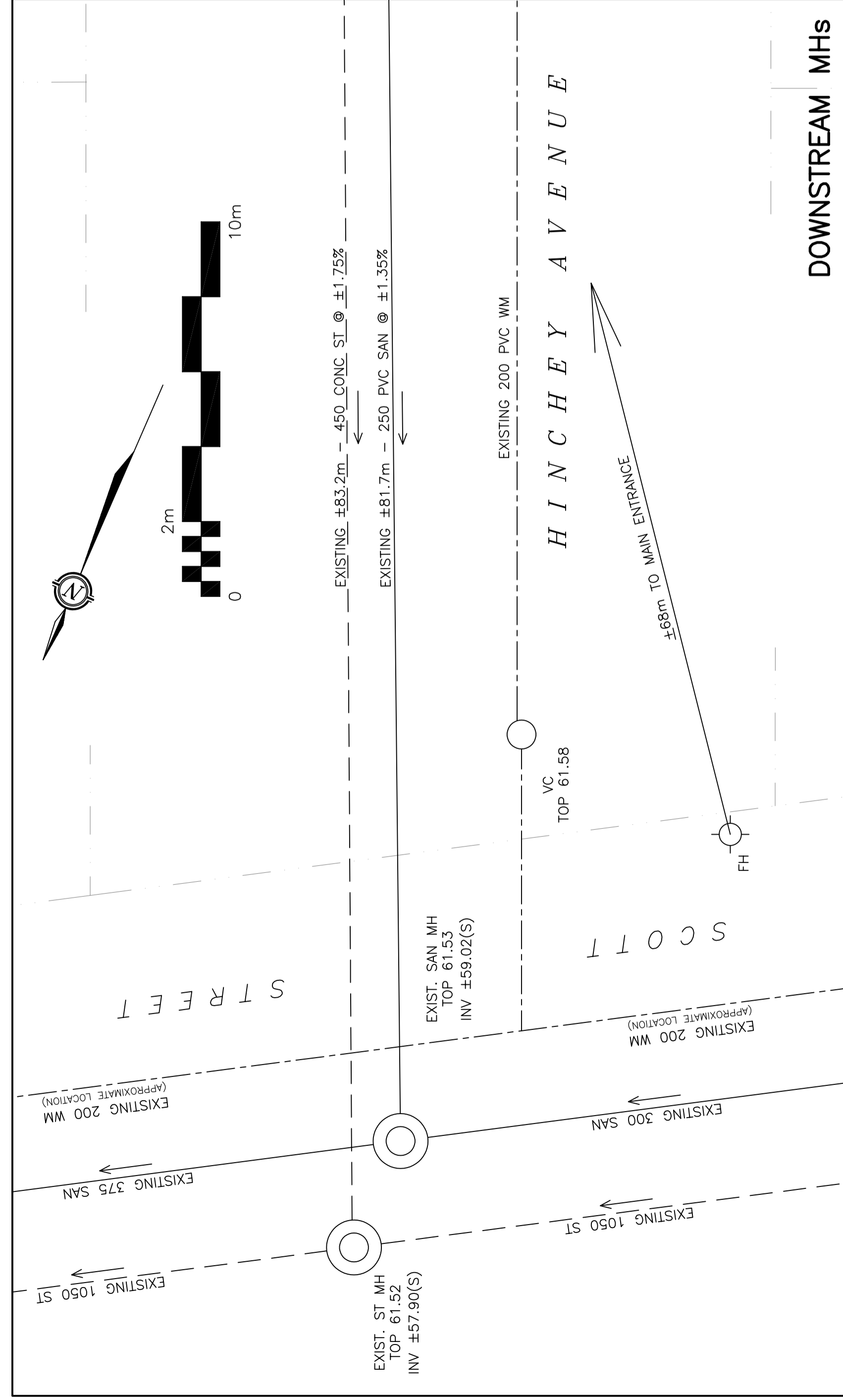


WATER SERVICE PROFILE TABLE

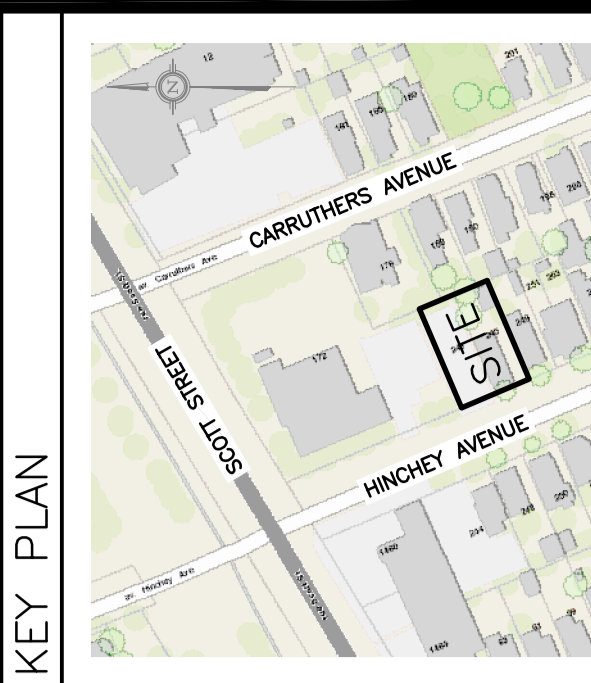
MATERIAL:
150mm PVC PRESSURE CLASS 150 DR18

| STATION | DESCRIPTION | GRADE ELEV. | TOP OF PIPE | DEPTH OF COVER | COMMENTS |
|---------|---|-------------|-------------|----------------|---|
| 0+00.0 | 150x200mm TEE CONNECTION IN 200mm MUNICIPAL WATERMAIN TO CITY OF OTTAWA STANDARDS | ±62.60 | 59.92 | ±2.68 | - |
| 0+02.1 | 45° VERTICAL BEND UP TO CITY OF OTTAWA STANDARDS | ±62.65 | 59.92 | ±2.73 | START OF INSULATION DOW. STYROFOAM SM-HI-40 OR EQUAL. 125mm THICK AS PER CITY OF OTTAWA DRAWING W23. |
| 0+02.8 | 45° VERTICAL BEND DOWN TO CITY OF OTTAWA STANDARDS | ±62.67 | 60.60 | ±2.07 | - |
| 0+03.8 | - | ±62.65 | 60.60 | ±2.05 | CROSSING 250 SAN TOP ±60.20 U/S WS 60.45 - 250mm CLEARANCE (MIN. 250mm REQ'D) |
| 0+04.8 | 45° VERTICAL BEND DOWN TO CITY OF OTTAWA STANDARDS | ±62.65 | 60.60 | ±2.05 | - |
| 0+04.9 | - | ±62.62 | 60.50 | ±2.12 | CROSSING 450 ST TOP ±59.62 U/S WS 60.35 - 750mm CLEARANCE (MIN. 250mm REQ'D) |
| 0+05.3 | 45° VERTICAL BEND UP TO CITY OF OTTAWA STANDARDS | ±62.60 | 60.10 | ±2.46 | END OF INSULATION DOW. STYROFOAM SM-HI-40 OR EQUAL. 125mm THICK AS PER CITY OF OTTAWA DRAWING W23. |
| 0+07.7 | - | ±62.50 | 60.10 | ±2.40 | GRADE ELEVATION AT BOTTOM OF CURB |
| 0+11.5 | 150mm VALVE & VALVE BOX AS PER CITY OF OTTAWA DRAWING No. W24 | 62.78 | 60.20 | 2.58 | ON PROPERTY LINE |
| 0+12.1 | - | 62.78 | 60.21 | 2.57 | LESS THAN 2.4m CLEARANCE TO WINDOW WELL. START OF INSULATION DOW. STYROFOAM SM-HI-40 OR EQUAL. 125mm THICK AS PER CITY OF OTTAWA DRAWING W23. |
| 0+12.5 | 22.5° HORIZONTAL BEND TO CITY OF OTTAWA STANDARDS | 62.80 | 60.21 | 2.59 | - |
| 0+14.0 | 22.5° HORIZONTAL BEND TO CITY OF OTTAWA STANDARDS | 62.83 | 60.21 | 2.62 | - |
| 0+15.5 | - | 62.86 | 60.30 | 2.56 | ENTRY INTO BUILDING. END OF INSULATION DOW. STYROFOAM SM-HI-40 OR EQUAL. 125mm THICK AS PER CITY OF OTTAWA DRAWING W23. |



DRAWING LEGEND

| | |
|------------------|----------------------------|
| CB | CATCH BASIN |
| MH | MANHOLE |
| SPL | SPRINGLINE OF PIPE |
| INV | INVERT OF PIPE |
| SAN | SANITARY SEWER |
| ST | STORM SEWER |
| WS/WM | WATER SERVICE/WATERMAIN |
| CS | CURB STOP & STANDPOST |
| VB | VALVE & VALVE BOX |
| FH | FIRE HYDRANT |
| FDC | FIRE DEPARTMENT CONNECTION |
| WD | WATER METER |
| RM | REMOTE WATER METER READOUT |
| ±61.98 | EXISTING GRADE ELEVATION |
| +67.89 | PROPOSED GRADE ELEVATION |
| ZZ | EXISTING SLOPE OF GRADE |
| ZZ | PROPOSED SLOPE OF GRADE |
| --- | CENTRELINE OF SINGLE |
| --- | PROPERTY LINE |
| D.C. | 150mm CURB/DEPRESSED CURB |
| CONCRETE | CONCRETE |
| PERMEABLE PAVERS | PERMEABLE PAVERS |
| LANDSCAPE | LANDSCAPE |
| WINDOW WELL | WINDOW WELL |
| FFL | FIRST FLOOR ELEVATION |
| TOF | TOP OF FOUNDATION |
| BFL | BASEMENT FLOOR ELEVATION |
| USF | UNDERSIDE OF FOOTING |



| No. | DATE | REVISION |
|-----|-----------|-------------------------|
| 4 | OCT 23-20 | RE-ISSUED FOR APPROVAL |
| 3 | AUG 13-20 | RE-ISSUED FOR APPROVAL |
| 2 | MAY 5-20 | ISSUED FOR APPROVAL |
| 1 | MAR 20-20 | ISSUED FOR COORDINATION |

D. B. GRAY ENGINEERING INC.
 700 Long Point Circle
 Ottawa, Ontario
 4gray@dbgrayengineering.com
 613-425-8044

Project
PROPOSED 3 STOREY APARTMENT BUILDING
243-245 HINCHEY AVE
 OTTAWA, ONTARIO

Drawing Title
SITE SERVICING PLAN

Engineer's Seal

 Drawn: D.B.G.
 Hor. Scale: 1:100
 Vert. Scale: 1:100
 Date: Feb 20-20
 Job No.: 20020
 Drawing No.: **C-1**
 of **3**
 NOT VALID UNLESS SIGNED & DATED

HINCHEY AVENUE
 REFER TO NOTES & DETAILS ON DRAWING C-3