

M:\2020\120096\CADD\Design\120096-STM.dwg, STM-A1, Oct 16, 2020, 2:22pm, cleguson

NOTE:
THE POSITION OF ALL POLE LINES, CONDUITS, WATERMANS, SEWERS AND OTHER UNDERGROUND AND OVERGROUND UTILITIES AND STRUCTURES IS NOT NECESSARILY SHOWN ON THE CONTRACT DRAWINGS, AND WHERE SHOWN, THE ACCURACY OF THE POSITION OF SUCH UTILITIES AND STRUCTURES IS NOT GUARANTEED, BEFORE STARTING WORK, DETERMINE THE EXACT LOCATION OF ALL SUCH UTILITIES AND STRUCTURES AND ASSUME ALL LIABILITY FOR DAMAGE TO THEM.

NOT FOR
CONSTRUCTION

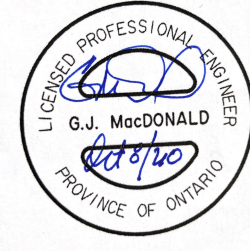
No.	REVISION	DATE	BY
2.	ISSUED FOR SITE PLAN CONTROL	8 OCT 2020	JAG
1.	ISSUED FOR INFORMATION	25 AUG 2020	JAG

SCALE

AS SHOWN

DESIGN	LGB
CHECKED	JAG
DRAWN	LGB
CHECKED	JAG
APPROVED	GJM

FOR REVIEW ONLY

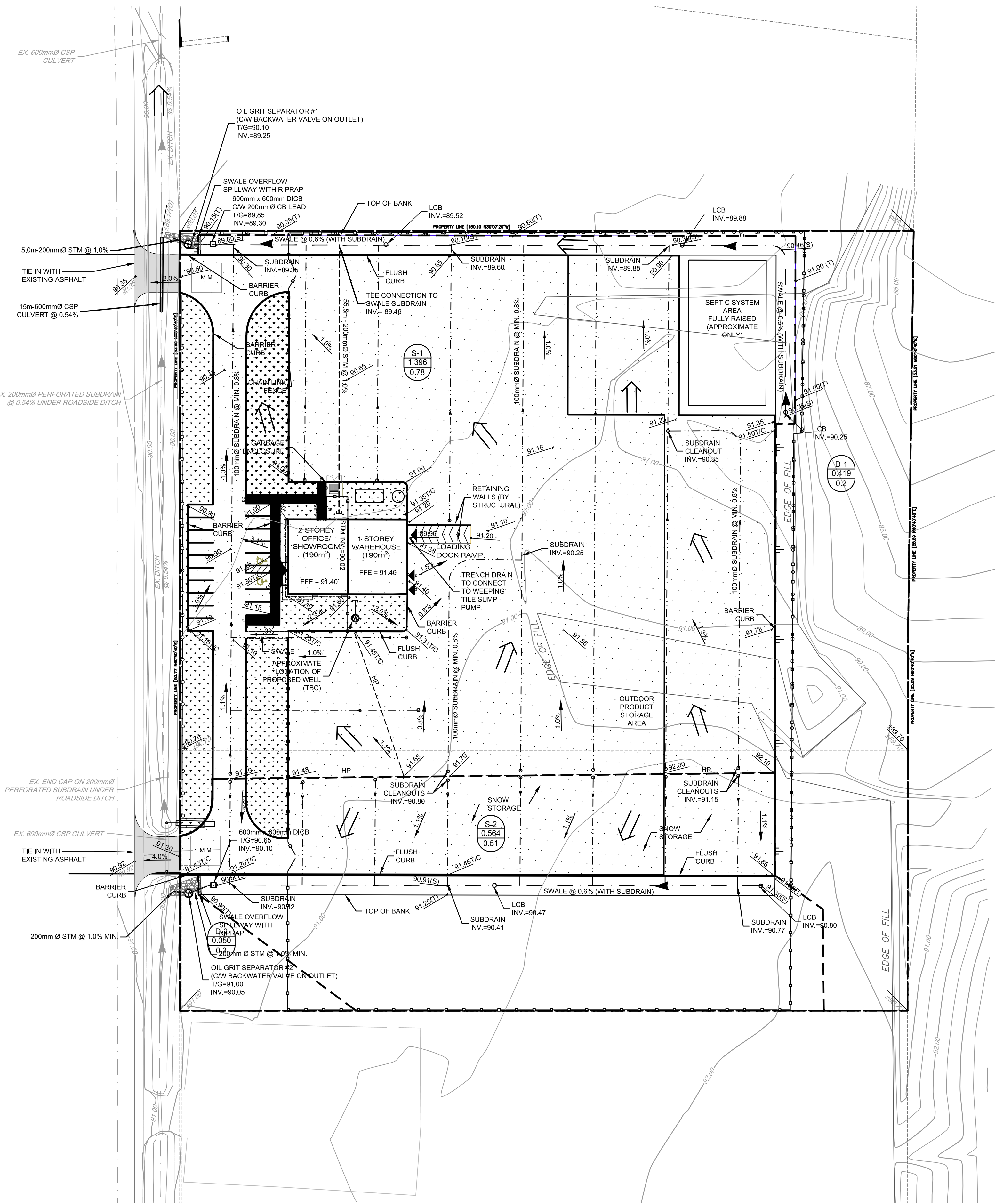


NOVATECH
Engineers, Planners & Landscape Architects
Suite 200, 240 Michael Cowpland Drive
Ottawa, Ontario, Canada K2M 1P6
Telephone (613) 254-9643
Facsimile (613) 254-5867
Website www.novatech-eng.com

LOCATION
CITY OF OTTAWA
TECHO-BLOC DEVELOPMENT, SOMME STREET

DRAWING NAME
STORM DRAINAGE AREA PLAN

PROJECT No.	120096-00
REV	REV # 2
DRAWING No.	120096-STM



KEY PLAN
N.T.S.

LEGEND

- PROPOSED BARRIER CURB
- PROPOSED DEPRESSED CURB
- DRAINAGE AREA LIMITS
- POST-DEVELOPMENT AREA ID
- POST-DEVELOPMENT DRAINAGE AREA (ha)
- 1.5 YEAR WEIGHTED RUNOFF COEFFICIENT
- PROPOSED SWALE WITH SUBDRAIN (REFER TO DETAIL ON 120096-ND)
- PROPOSED DITCH INLET CATCHBASIN
- PROPOSED STORM SERVICE
- PROPOSED OIL GRIT SEPARATOR
- PROPOSED PAVEMENT SUBDRAIN (REFER TO DETAIL ON 120096-ND)
- DIRECTION OF MAJOR OVERLAND FLOW
- PROPOSED BUILDING ENTRANCE / EXIT
- EXISTING DITCH
- MAXIMUM 3:1 SIDESLOPE

STORMWATER MANAGEMENT NOTES:

- REFER TO THE 'SITE SERVICING AND SWM REPORT' (R-2020-XXX) PREPARED BY NOVATECH FOR DRAINAGE AND STORMWATER MANAGEMENT DETAILS.

PERMEABLE PAVEMENT STRUCTURE:
(AS PER GEOTECHNICAL REPORT)

- ACCESS, TRUCK TRAFFIC & CAR PARKING AREAS
- HYDRA PERMEABLE PAVER (100mm DEPTH)
- 50mm BEDDING COURSE
- 100mm BASECOURSE
- 550mm SUBBASE COURSE

REFER TO FULL PAVEMENT DETAIL ON 120096-ND.

PLANNED BY: G. MacDonald