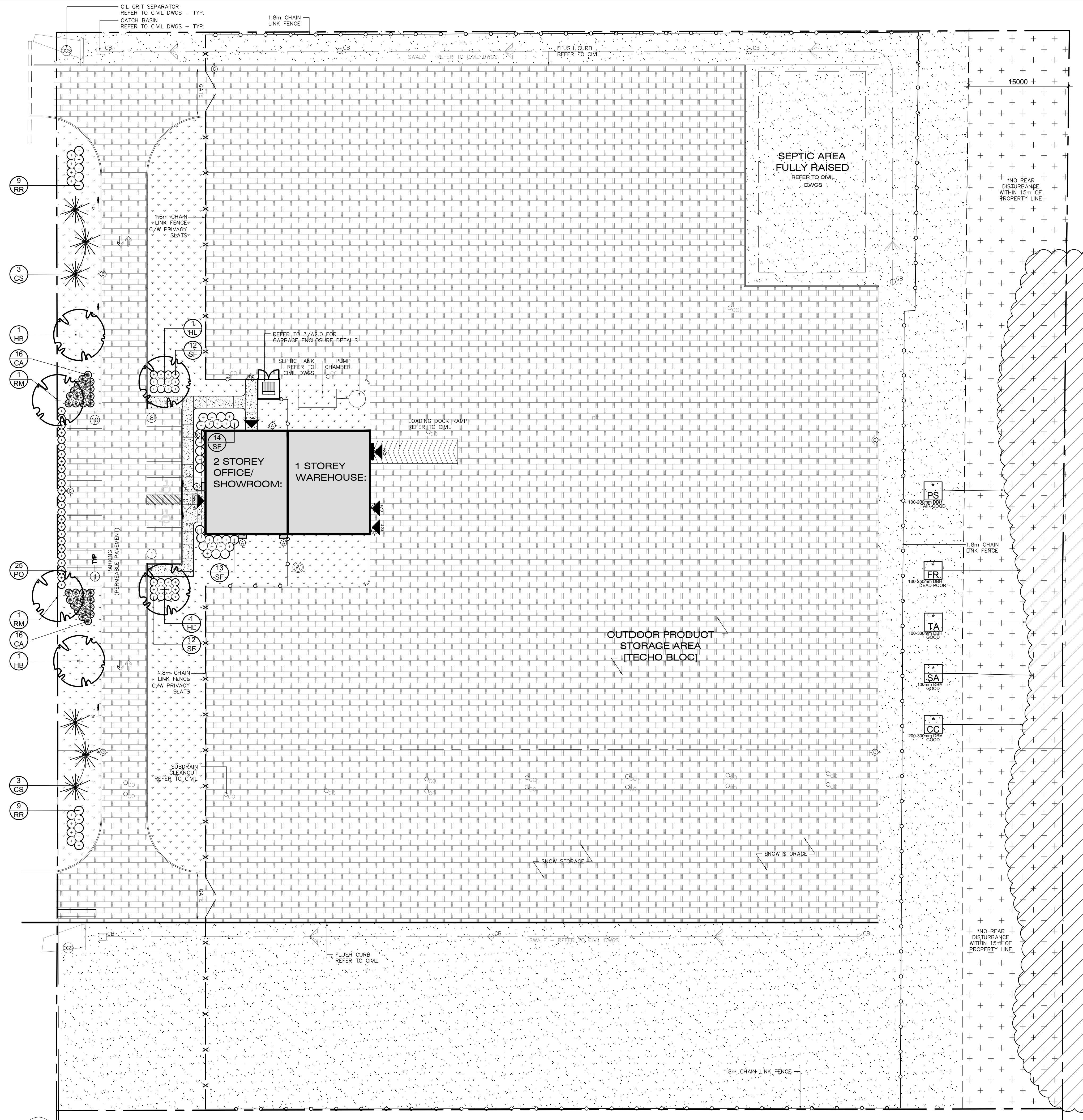
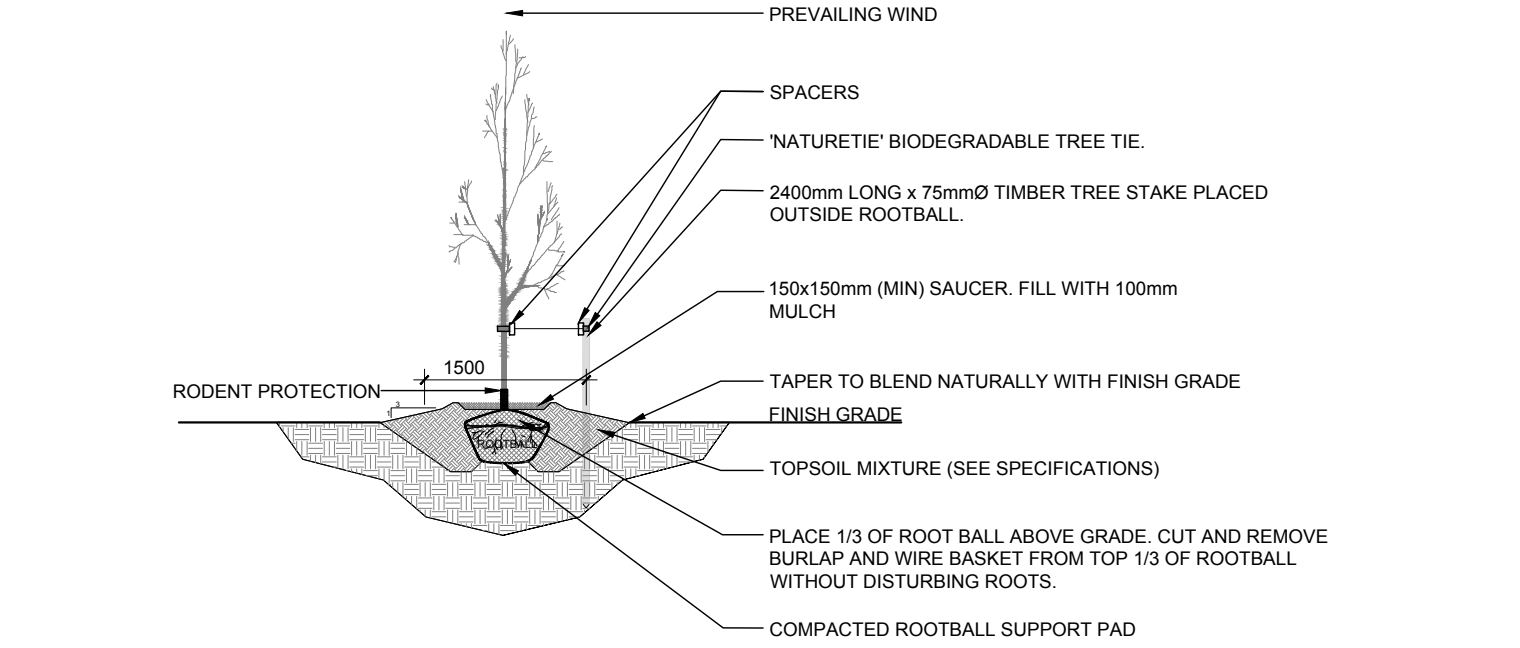


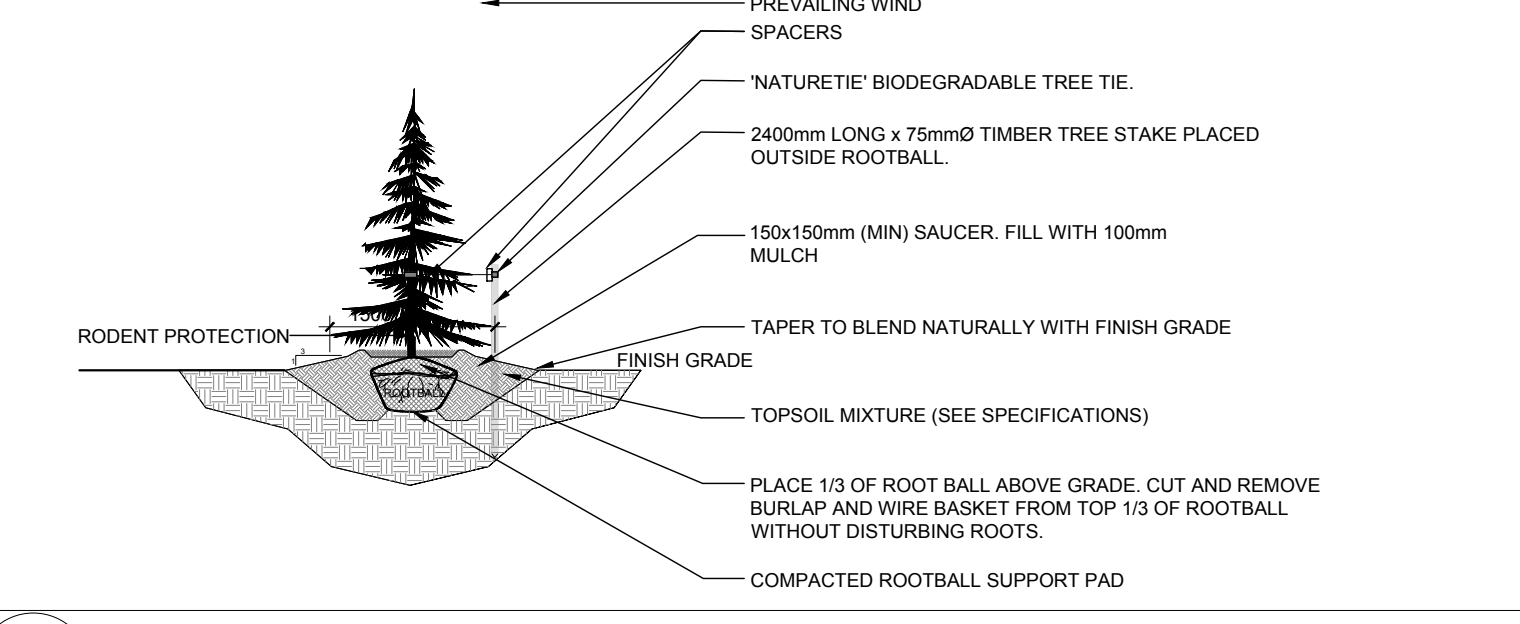
6 OF ROAD CONSTRUCTION  
SOMME STREET



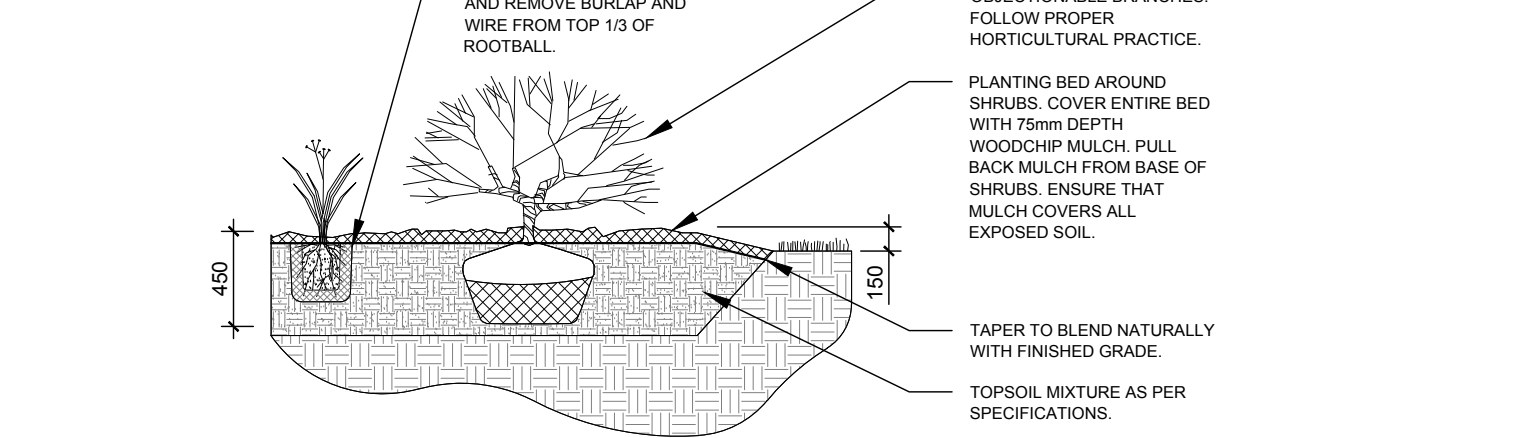
- GENERAL NOTES:**
- It is the responsibility of the appropriate contractor or official to report any errors, omissions or discrepancies on this plan with actual site conditions to the Landscape Architect before proceeding with construction.
  - The contractor is to notify all utility companies and authorities prior to any excavation and ascertain locations of underground services.
  - The contractor is to reinstate all areas and items damaged as a result of construction activity.
  - The contractor is to comply with all pertinent codes and by-laws.
  - The contractor is to maintain a positive surface run-off throughout the entire construction period.
  - The Landscape Architect is not responsible for subsurface conditions.
  - The contractor is to identify all existing trees to remain on site with the Landscape Architect prior to construction.
  - The contractor is to stake the proposed location of all plant material in conjunction with the Landscape Architect prior to excavation.
  - Minimum distances for selected deciduous trees are as follows:
    - Building Foundations 7.5m
    - Sidewalks 1.5m
    - Public Streets 2.5m
    - Underground Infrastructure 2.0m
  - All trees within 1m of underground utility trenches are to be excavated by hand.
  - Remove all protective wrapping from tree trunks after installation.
  - Staking of trees shall only be performed if necessary.
  - Ensure that mulch is pulled back a min. distance of 75mm from base of tree trunk.



**2 DECIDUOUS TREE PLANTING**  
L.1 SCALE: NTS



**3 DECIDUOUS TREE PLANTING**  
L.1 SCALE: NTS



**4 SHRUB / PERENNIAL PLANTING**  
L.1 SCALE: NTS

PROPOSED PLANT LIST						
KEY	QTY	BOTANICAL NAME	COMMON NAME	SIZE	CONDITION	REMARKS
<b>TREES</b>						
CS	6	<i>Picea pungens</i>	Colorado Spruce	1.8m Ht.	B&B	
HB	2	<i>Celtis occidentalis</i>	Hackberry	60mm ø	B&B	
HL	2	<i>Gleditsia triacanthos</i> var. <i>inermis</i>	Honey Locust	60mm ø	B&B	
RM	2	<i>Acer rubrum</i>	Red Maple	60mm ø	B&B	
<b>SHRUBS</b>						
CA	32	<i>Juniperus sabina</i> 'Tamariscifolia'	Tamarix Juniper	800 mm spr.	Potted	1000 mm o.c.
PO	25	<i>Potentilla fruticosa</i> 'Goldfinger'	Goldfinger Potentilla	600mm ht.	Potted	800mm o.c.
RR	18	<i>Rosa rugosa</i>	Rugosa Rose	800mm ht.	Potted	1200 mm o.c.
SF	39	<i>Sorbaria sorbifolia</i> 'Sem'	Sem False Spirea	600 mm ht.	Potted	1000 mm o.c.

EXISTING TREE LIST						
KEY	QTY	BOTANICAL NAME	COMMON NAME	SIZE	CONDITION	REMARKS
<b>TREES</b>						
CC	*	<i>Carya cordiformis</i>	Bitternut Hickory	200-300mm DBH	GOOD	To Remain
FR	*	<i>Fraxinus</i> sp.	Ash	100-250mm DBH	DEAD-POOR	To Remain
PS	*	<i>Prunus serotina</i>	Black Cherry	100-200mm DBH	FAIR-GOOD	To Remain
SA	*	<i>Salix</i> sp.	Willow	100mm DBH	GOOD	To Remain
TA	*	<i>Tilia americana</i>	Basswood	100-300mm DBH	FAIR-GOOD	To Remain

\* DENOTES NUMEROUS

CLIENT:

CONSULTANTS:

ARCHITECTS:

S.J. LAWRENCE ARCHITECT INCORPORATED  
18 DEAKIN STREET SUITE 205 OTTAWA, ONTARIO K2E 6B7  
T: (613) 739-7770 F: (613) 739-7703 sjl@sjlarchitect.com

CIVIL ENGINEERS:

**NOVATECH ENGINEERING CONSULTANTS LTD.**  
200-240 MICHAEL COWPLAND DRIVE, OTTAWA, ON  
K2M 1P6 TEL: (613) 254 9643

LEGEND

- PROPOSED SEEDED GRASS AREA
- PROPOSED SODDED GRASS AREA
- PROPOSED SHRUBS / ORNAMENTAL GRASSES
- PROPOSED DECIDUOUS TREE
- PROPOSED CONIFEROUS TREE
- EXISTING TREES TO REMAIN
- PROPOSED 1.8m HI. CHAIN LINK FENCE
- PROPOSED 1.8m HI. CHAIN LINK FENCE WITH PRIVACY SLATS
- EXISTING LANDSCAPE AREA TO REMAIN UNDISTURBED
- PROPOSED PERMEABLE PAVERS

1	ISSUED FOR SITE PLAN APPROVAL	10/14/2020	ML	JL
No.	Issue	Date	DR	CK

**JAMES B. LENNOX & ASSOCIATES INC. LANDSCAPE ARCHITECTS**  
3332 CARLING AVE. OTTAWA, ONTARIO K2H 5A8  
Tel. (613) 722-5168 Fax. (613) 343-3942

PROJECT  
TECHO BLOC NEW WAREHOUSE  
SOMME STREET, OTTAWA ON

DRAWING  
TREE CONSERVATION REPORT & LANDSCAPE PLAN

STAMP

SCALE  
AS SHOWN

START DATE  
JULY 2020

PROJECT NO.  
20MAR2052

PROJECT NORTH

DRAWING NO.  
**L.1**

PLOT SIZE ARCH-D