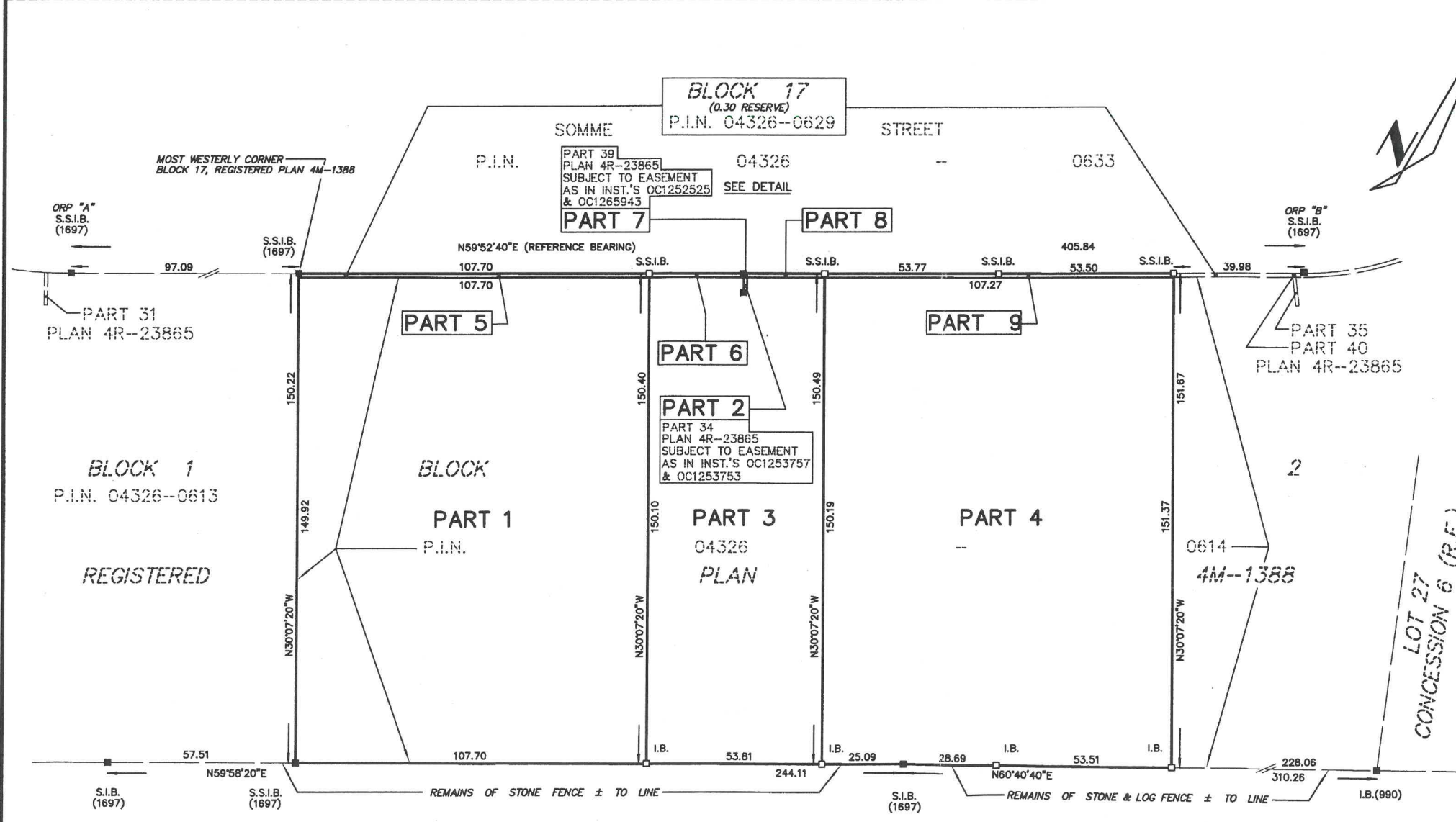
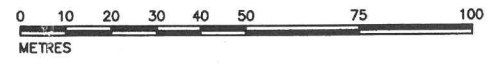


PLAN 4R-32280
 RECEIVED AND DEPOSITED
 DATE JULY 22, 2019
 DATE October 4, 2019
 "J. Hansen"
 REPRESENTATIVE FOR
 LAND REGISTRAR FOR THE
 LAND TITLES DIVISION OF
 OTTAWA-CARLETON (No.4)

PLAN OF SURVEY OF
 PART OF BLOCK 2 AND
 PART OF RESERVE BLOCK 17
 REGISTERED PLAN 4M-1388
 CITY OF OTTAWA
 SCALE 1:1000



SCHEDULE			
PART	BLOCK	PLAN	P.I.N.
1			
2	PART OF BLOCK 2	REGISTERED PLAN 4M-1388	PART OF 04326-0614
3			
4			
5			
6	PART OF RESERVE BLOCK 17	REGISTERED PLAN 4M-1388	PART OF 04326-0629
7			
8			
9			

PART 2 - SUBJECT TO EASEMENT AS IN INST.'S OC1253757 & OC1253753
 PART 7 - SUBJECT TO EASEMENT AS IN INST.'S OC1252525 & OC1265943

METRIC
 DISTANCES AND COORDINATES SHOWN ON THIS PLAN ARE IN METRES AND CAN BE CONVERTED TO FEET BY DIVIDING BY 0.3048

NOTES
 BEARINGS SHOWN ON THIS PLAN ARE GRID BEARINGS, AND ARE DERIVED FROM LEICA SMART-NET REAL TIME NETWORK GPS OBSERVATIONS ON REFERENCE "A" AND "B" SHOWN HEREON, AND ARE REFERENCED TO SPECIFIED CONTROL POINTS 01919791338 AND 01919871649, MTM ZONE 9, (76°30' WEST LONGITUDE), NAD 83 (ORIGINAL).
 DISTANCES SHOWN ON THIS PLAN ARE HORIZONTAL GROUND DISTANCES AND CAN BE CONVERTED TO GRID DISTANCES BY MULTIPLYING BY THE COMBINED SCALE FACTOR OF 0.999954

- S.I.B. DENOTES 0.025 SQ., 1.2 LONG, STANDARD IRON BAR
- S.S.I.B. DENOTES 0.025 SQ., 0.6 LONG, SHORT STANDARD IRON BAR
- I.B. DENOTES 0.018 SQ., 0.6 LONG, IRON BAR
- R.I.B. DENOTES ROUND IRON BAR
- DENOTES SURVEY MONUMENT FOUND
- DENOTES SURVEY MONUMENT PLANTED
- WT. DENOTES WITNESS
- S.U. DENOTES SOURCE UNKNOWN
- 990 DENOTES J.G. PAYETTE, O.L.S.
- 1697 DENOTES J.P. SHIPMAN, O.L.S.
- R.F. DENOTES RIDEAU FRONT

SURVEYOR'S CERTIFICATE

I CERTIFY THAT:
 (1) THIS SURVEY AND PLAN ARE CORRECT AND IN ACCORDANCE WITH THE SURVEYS ACT, THE SURVEYORS ACT AND THE LAND TITLES ACT AND THE REGULATIONS MADE UNDER THEM;
 (2) THE SURVEY WAS COMPLETED ON THE 18th DAY OF JULY, 2019.

JULY 22, 2019
 DATE
 J.P. SHIPMAN
 ONTARIO LAND SURVEYOR

OBSERVED REFERENCE POINTS (ORP): MTM ZONE 9, NAD 83 (ORIGINAL)		
POINT IDENTIFICATION	NORTHING	EASTING
ORP A	5018508.2	379217.2
ORP B	5018711.8	379568.3

COORDINATES SHOWN TO RURAL ACCURACY IN ACCORDANCE WITH O.REG 216/10, SECTIONS 14, AND 31 TO 35 (BOTH INCLUSIVE).
 COORDINATES CANNOT, IN THEMSELVES, BE USED TO RE-ESTABLISH CORNERS OR BOUNDARIES SHOWN ON THIS PLAN

PART 3, PLAN 5R -- 2847
 P.I.N. 04326 -- 0275
 LOT 28, CONCESSION 6 (R.F.)
 GEOGRAPHIC TOWNSHIP OF GLOUCESTER



H.A.KEN SHIPMAN SURVEYING LTD.
 P.O. BOX 53, NORTH GOWER, ONT. KOA 2T0

REF No.: GL-505
 FILE No.: 19-11864