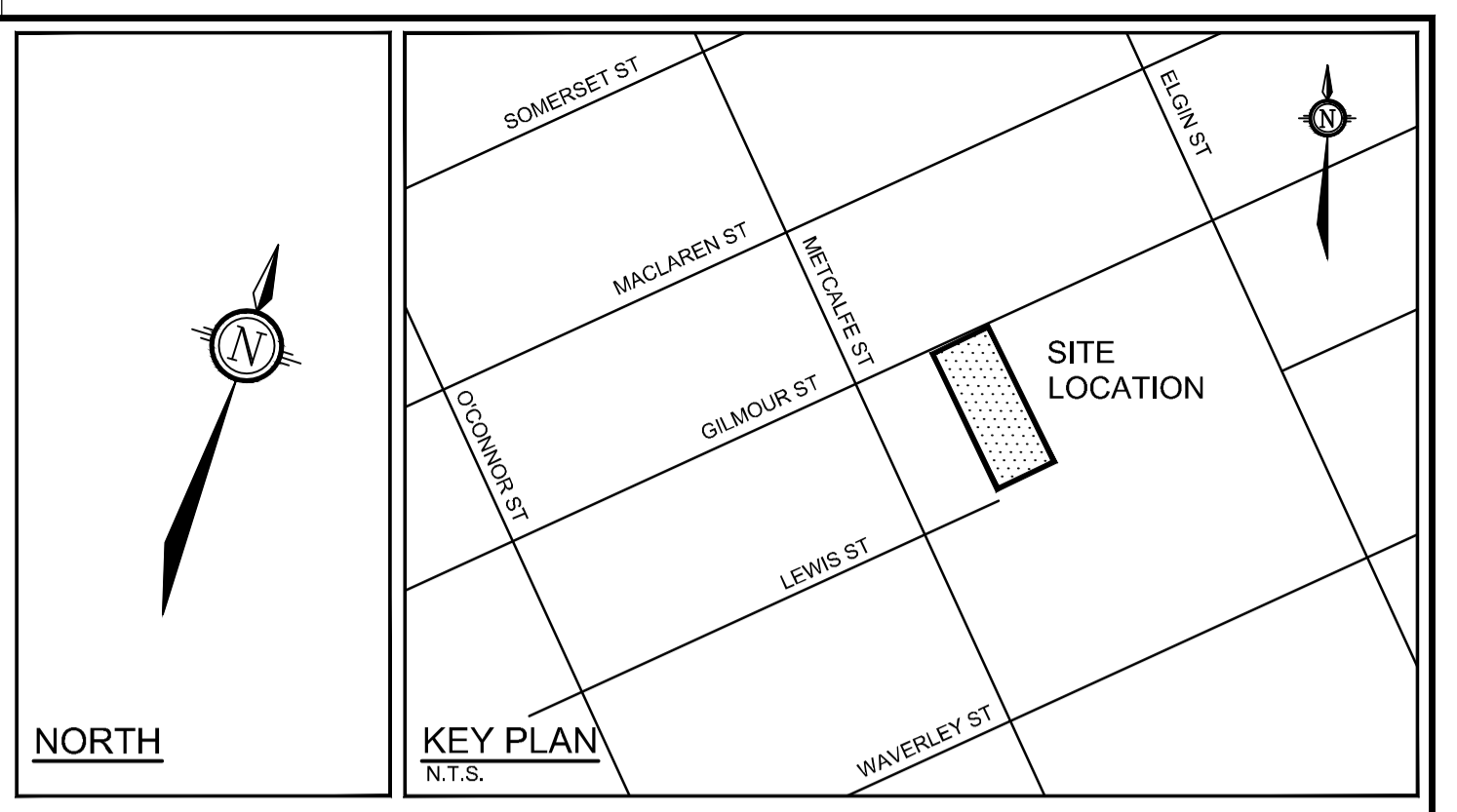
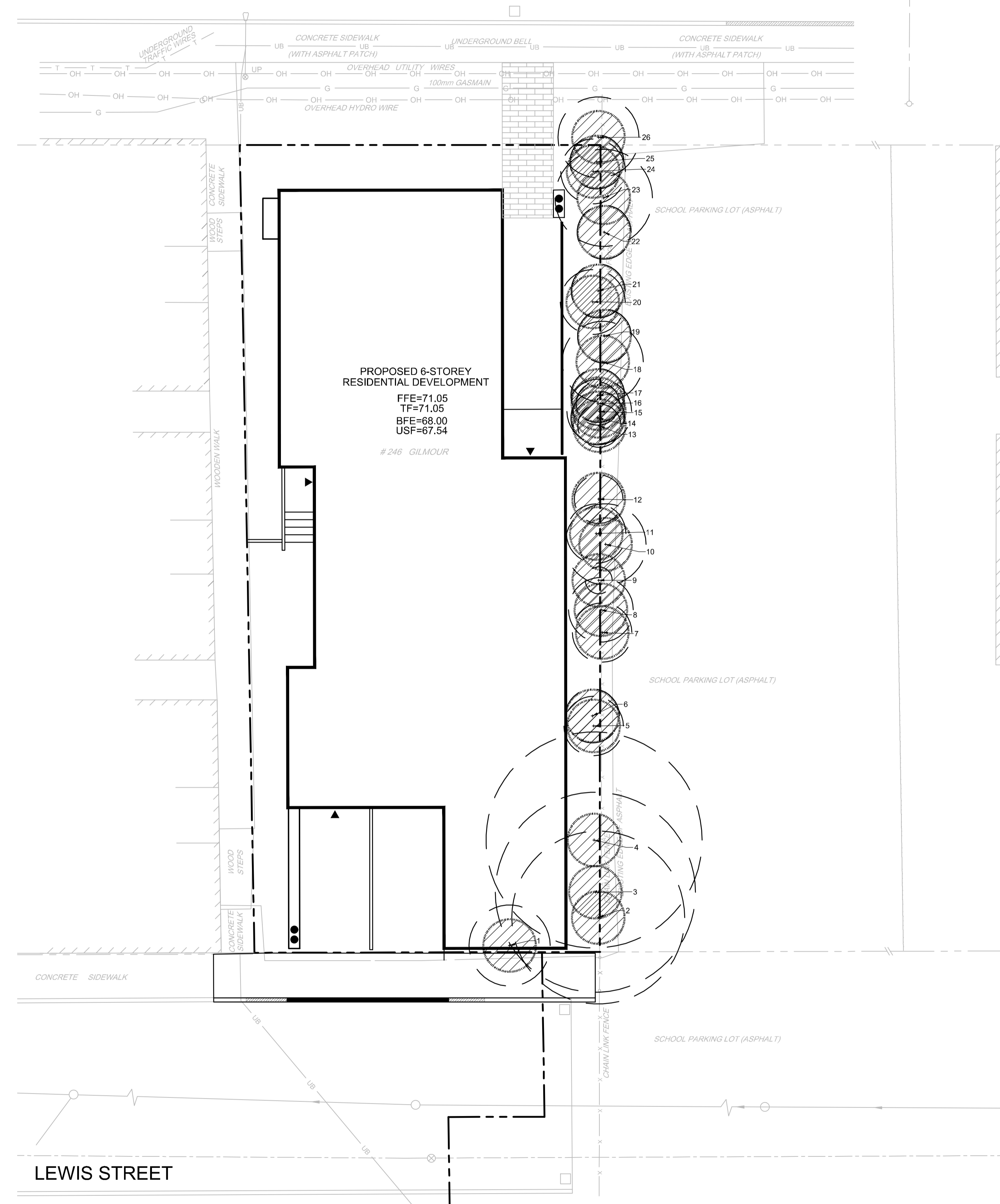


GILMOUR STREET



- LANDSCAPE LEGEND:
- EXISTING TREE TO REMAIN
 - EXISTING TREE TO REMOVE
 - CRITICAL ROOT ZONE (CRZ)

Saide Sayah

SAIDE SAYAH
MANAGER, CENTRAL BRANCH
PLANNING, INFRASTRUCTURE & ECONOMIC
DEVELOPMENT DEPARTMENT, CITY OF OTTAWA

APPROVED
 By Saide Sayah at 4:52 pm, Oct 01, 2020

No.	Botanical Name	Common Name	DBH (m)	CRZ (m)	Condition	Remarks	Recomm.
1	<i>Acer negundo</i>	Manitoba Maple	0.15	1.50	F	leaning	Remove
2	<i>Ulmus pumila</i>	Siberian Elm	0.32	3.20	P	Split trunk, damage by fence	Remove
3	<i>Ulmus pumila</i>	Siberian Elm	0.37	3.70	P	Split trunk, damage by fence	Remove
4	<i>Ulmus pumila</i>	Siberian Elm	0.40	4.00	P	Split trunk, dutch elm disease	Remove
5	<i>Ulmus pumila</i>	Siberian Elm	0.11	1.10	P	No leaves at time of TCR - dead?	Remove
6	<i>Acer platanoides</i>	Norway Maple	0.10	1.00	G		Remove
7	<i>Acer platanoides</i>	Norway Maple	0.11	1.10	P	Growing in fence	Remove
8	<i>Acer platanoides</i>	Norway Maple	0.05,0.08,0.12	1.20	P	Multi-leader, growing in fence	Remove
9	<i>Acer platanoides</i>	Norway Maple	0.05,0.05	0.50	P	Multi-leader, growing in fence	Remove
10	<i>Acer platanoides</i>	Norway Maple	0.15	1.50	G		Remove
11	<i>Acer platanoides</i>	Norway Maple	0.11	1.10	P	Growing in fence	Remove
12	<i>Acer platanoides</i>	Norway Maple	0.08,0.09,0.03	0.90	P	Multi-leader, growing in fence	Remove
13	<i>Acer platanoides</i>	Norway Maple	0.06,0.08,0.04	0.80	P	Multi-leader, growing in fence	Remove
14	<i>Acer platanoides</i>	Norway Maple	0.10	1.00	G		Remove
15	<i>Acer platanoides</i>	Norway Maple	0.08,0.12	1.20	P	Multi-leader, growing in fence	Remove
16	<i>Acer platanoides</i>	Norway Maple	0.08,0.08	0.80	P	Multi-leader, growing in fence	Remove
17	<i>Acer platanoides</i>	Norway Maple	0.10	1.00	P	Multi-leader, growing in fence, suckers	Remove
18	<i>Acer platanoides</i>	Norway Maple	0.15	1.50	P	Growing in fence	Remove
19	<i>Ulmus pumila</i>	Siberian Elm	0.10	1.00	P	No leaves at time of TCR - dead?	Remove
20	<i>Acer platanoides</i>	Norway Maple	0.12	1.20	F	Intertwined with 34	Remove
21	<i>Acer platanoides</i>	Norway Maple	0.10	1.00	P	Growing in fence	Remove
22	<i>Acer platanoides</i>	Norway Maple	0.10	1.00	P	Split trunk, no leaves	Remove
23	<i>Acer sp.</i>		0.18	1.80	P	Growing in fence, early defoliation	Remove
24	<i>Acer platanoides</i>	Norway Maple	0.12	1.20	G		Remove
25	<i>Acer platanoides</i>	Norway Maple	0.10	1.00	G		Remove
26	<i>Acer platanoides</i>	Norway Maple	0.15	1.50	G	Very close to overhead wires	Remove

NOTE:
 THE POSITION OF ALL POLE LINES, CONDUITS, WATERMANS, SEWERS AND OTHER UNDERGROUND AND OVERGROUND UTILITIES AND STRUCTURES IS NOT NECESSARILY SHOWN ON THE CONTRACT DRAWINGS, AND WHERE SHOWN, THE ACCURACY OF THE POSITION OF SUCH UTILITIES AND STRUCTURES IS NOT GUARANTEED. BEFORE STARTING WORK, DETERMINE THE EXACT LOCATION OF ALL SUCH UTILITIES AND STRUCTURES AND ASSUME ALL LIABILITY FOR DAMAGE TO THEM.

OWNER INFORMATION
 EPCON ENTERPRISES LTD.
 1566 LAPERRIERE AVE.
 OTTAWA, ONTARIO, K1Z 7T2
 MR. DOMENIC IDONE
 PHONE: (613) 325-3416
 IDONEDOM@GMAIL.COM

No.	REVISION	DATE	BY
2	ISSUED FOR SITE PLAN	MAY 26/20	RGJ
1	ISSUED FOR SITE PLAN APPLICATION	NOV 26/19	RGJ

SCALE
 1:100

0 1 2 3 4

DESIGN: KEW
 CHECKED: RGJ
 DRAWN: KEW
 CHECKED: RGJ
 APPROVED: RGJ

FOR REVIEW ONLY

ASSOCIATION OF LANDSCAPE ARCHITECTS
 OTTAWA CHAPTER
 NOV 26 2020
 MEMBER

NOVATECH
 Engineers, Planners & Landscape Architects
 Suite 200, 240 Michael Cowpland Drive
 Ottawa, Ontario, Canada K2M 1P6
 Telephone: (613) 254-9643
 Facsimile: (613) 254-5867
 Website: www.novatech-eng.com

LOCATION
 CITY OF OTTAWA
 246 GILMOUR STREET

DRAWING NAME
TREE CONSERVATION REPORT

PROJECT No.
 118221

REV # 2

DRAWING No.
 118221-TCR

M:\2018\118221\TCR\Landscaping\Plan\118221-TCR_01.dwg, TCR, May 26, 2020, -1:24pm, kvanibson