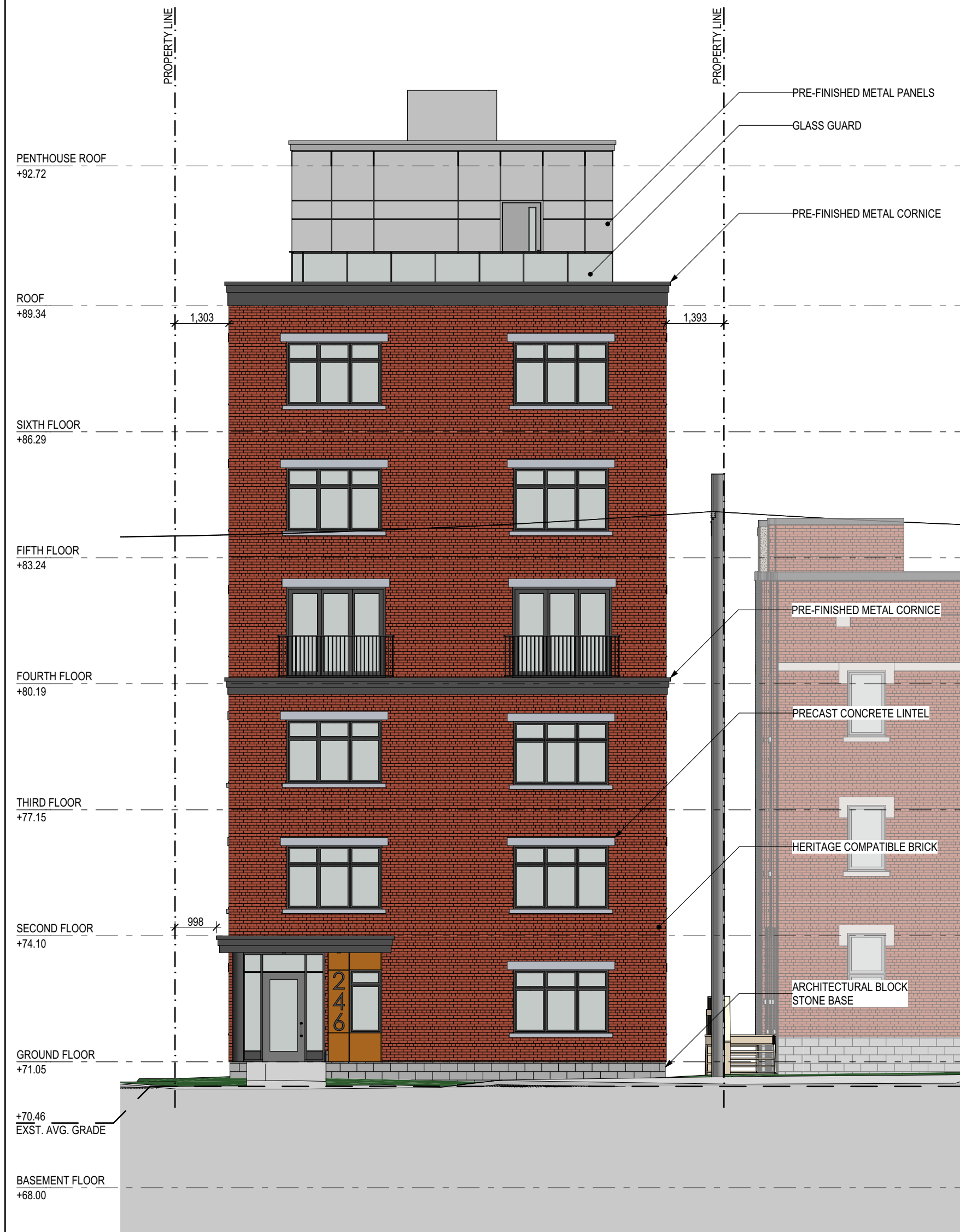


2 SOUTH ELEVATION
SCALE: 1:100



1 NORTH ELEVATION
SCALE: 1:100

Saide Sayah

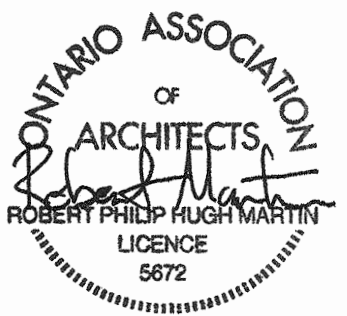
SAIDE SAYAH
MANAGER, CENTRAL BRANCH
PLANNING, INFRASTRUCTURE & ECONOMIC
DEVELOPMENT DEPARTMENT, CITY OF OTTAWA

APPROVED
By Saide Sayah at 4:51 pm, Oct 01, 2020



ROBERTSON MARTIN
ARCHITECTS

STAMP:



CLIENT:

EPCON Enterprises Limited
1566 Lapierre Avenue, Ottawa, ON - K1Z 7T2

AGENT:

Novatech Engineering Consultants Limited
240 Michael Cowpland Drive, Suite 200, Ottawa, ON - K2M 1P6

CIVIL ENGINEER:

Novatech Engineering Consultants Limited
240 Michael Cowpland Drive, Suite 200, Ottawa, ON - K2M 1P6

PLANNER & LANDSCAPE:

Novatech Engineering Consultants Limited
240 Michael Cowpland Drive, Suite 200, Ottawa, ON - K2M 1P6

SURVEYOR:

Fairhall Moffatt & Woodland Limited
600 Terry Fox Drive, Suite 100, Kanata, ON - K2L 4B6

REVISIONS:

No.	DESCRIPTION	DATE
05	ISSUED FOR SITE PLAN CONTROL RESPONSE	2020-05-27
04	ISSUED FOR SITE PLAN CONTROL RESPONSE	2020-04-16
03	ISSUED FOR COORDINATION	2020-03-30
02	ISSUED FOR SITE PLAN CONTROL	2019-11-19
01	ISSUED FOR COORDINATION	2019-11-05

DRAWINGS COPYRIGHT ROBERTSON MARTIN ARCHITECTS.

DO NOT COPY. DO NOT SCALE DRAWINGS.
ALL DIMENSIONS TO BE CHECKED AND VERIFIED ON SITE.

NORTH:

PROJECT:

22 UNIT MID-RISE APARTMENT
DWELLING

246 Gilmour Street

DRAWING:

NORTH AND SOUTH
ELEVATIONS

DESIGNED BY:	APPROVED BY:
SD + NSB	RM
DRAWN BY:	
NSB	
DATE:	SCALE:
2020-05-27	AS SHOWN
RMA PROJECT NUMBER	SHEET NUMBER:

19046

A300

D07-12-19-0196

A2 19046_246Gilmour_DesignDevelopment_2020_04_09.pln



Saide Sayah

SAIDE SAYAH
MANAGER, CENTRAL BRANCH
PLANNING, INFRASTRUCTURE & ECONOMIC
DEVELOPMENT DEPARTMENT, CITY OF OTTAWA

APPROVED
By Saide Sayah at 4:51 pm, Oct 01, 2020



ROBERTSON MARTIN
ARCHITECTS

STAMP:



CLIENT:
EPCON Enterprises Limited
1566 Lapierre Avenue, Ottawa, ON - K1Z 7T2

AGENT:
Novatech Engineering Consultants Limited
240 Michael Cowpland Drive, Suite 200, Ottawa, ON - K2M 1P6

CIVIL ENGINEER:
Novatech Engineering Consultants Limited
240 Michael Cowpland Drive, Suite 200, Ottawa, ON - K2M 1P6

PLANNER & LANDSCAPE:
Novatech Engineering Consultants Limited
240 Michael Cowpland Drive, Suite 200, Ottawa, ON - K2M 1P6

SURVEYOR:
Fairhall Moffatt & Woodland Limited
600 Terry Fox Drive, Suite 100, Kanata, ON - K2L 4B6

REVISIONS:

No.	DESCRIPTION	DATE
05	ISSUED FOR SITE PLAN CONTROL RESPONSE	2020-05-27
04	ISSUED FOR SITE PLAN CONTROL RESPONSE	2020-04-16
03	ISSUED FOR COORDINATION	2020-03-30
02	ISSUED FOR SITE PLAN CONTROL	2019-11-19
01	ISSUED FOR COORDINATION	2019-11-05

DRAWINGS COPYRIGHT ROBERTSON MARTIN ARCHITECTS.

DO NOT COPY. DO NOT SCALE DRAWINGS.
ALL DIMENSIONS TO BE CHECKED AND VERIFIED ON SITE.

NORTH:

PROJECT:

**22 UNIT MID-RISE APARTMENT
DWELLING**

246 Gilmour Street

DRAWING:

EAST ELEVATION

DESIGNED BY: SD + NSB
DRAWN BY: NSB
DATE: 2020-05-27
RMA PROJECT NUMBER: 19046

APPROVED BY: RM
SCALE: AS SHOWN
SHEET NUMBER: A301

D07-12-19-0196

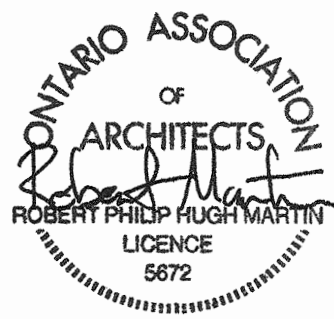


Saide Sayah

SAIDE SAYAH
MANAGER, CENTRAL BRANCH
PLANNING, INFRASTRUCTURE & ECONOMIC
DEVELOPMENT DEPARTMENT, CITY OF OTTAWA

APPROVED
By Saide Sayah at 4:51 pm, Oct 01, 2020

STAMP:



CLIENT: EPCON Enterprises Limited
1566 Lapierre Avenue, Ottawa, ON - K1Z 7T2

AGENT: Novatech Engineering Consultants Limited
240 Michael Cowpland Drive, Suite 200, Ottawa, ON - K2M 1P6

CIVIL ENGINEER: Novatech Engineering Consultants Limited
240 Michael Cowpland Drive, Suite 200, Ottawa, ON - K2M 1P6

PLANNER & LANDSCAPE: Novatech Engineering Consultants Limited
240 Michael Cowpland Drive, Suite 200, Ottawa, ON - K2M 1P6

SURVEYOR: Fairhall Moffatt & Woodland Limited
600 Terry Fox Drive, Suite 100, Kanata, ON - K2L 4B6

REVISIONS:

No.	DESCRIPTION	DATE
05	ISSUED FOR SITE PLAN CONTROL RESPONSE	2020-05-27
04	ISSUED FOR SITE PLAN CONTROL RESPONSE	2020-04-16
03	ISSUED FOR COORDINATION	2020-03-30
02	ISSUED FOR SITE PLAN CONTROL	2019-11-19
01	ISSUED FOR COORDINATION	2019-11-05

DRAWINGS COPYRIGHT ROBERTSON MARTIN ARCHITECTS.

DO NOT COPY. DO NOT SCALE DRAWINGS.
ALL DIMENSIONS TO BE CHECKED AND VERIFIED ON SITE.

NORTH:

PROJECT:

22 UNIT MID-RISE APARTMENT
DWELLING

246 Gilmour Street

DRAWING:

WEST ELEVATION

DESIGNED BY: SD + NSB
DRAWN BY: NSB
DATE: 2020-05-27
RMA PROJECT NUMBER: 19046

APPROVED BY: RM
SCALE: AS SHOWN
SHEET NUMBER: A302