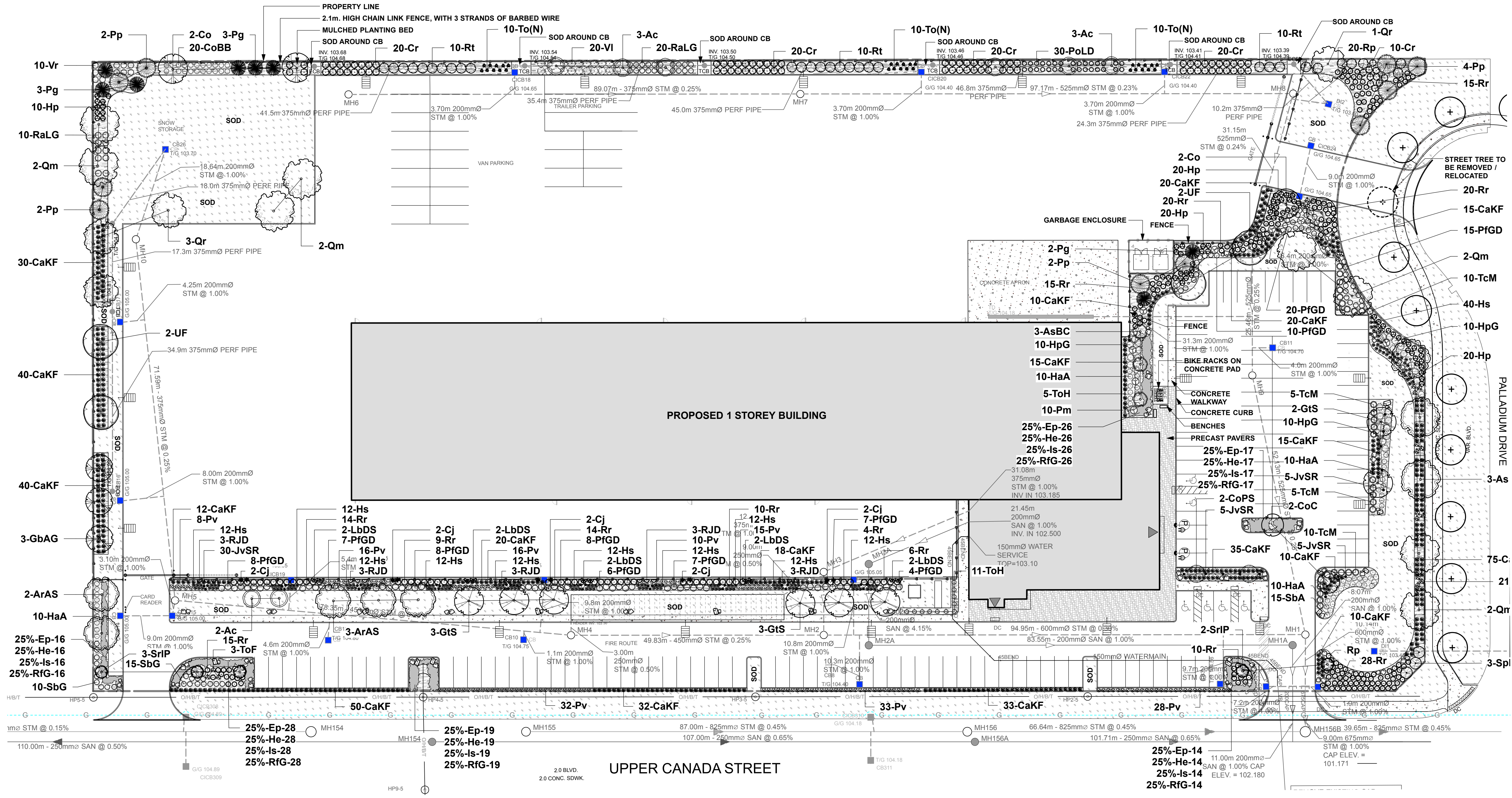
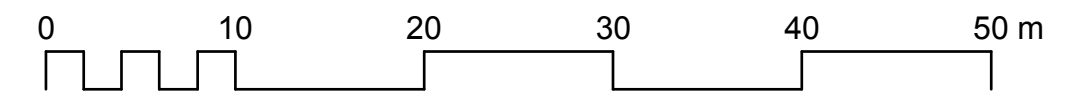


- GENERAL NOTES**
- All general site information and conditions compiled from existing plans, surveys and consultant's field notes. Report all discrepancies prior to any work. No responsibility is born by the Consultant for unknown subsurface conditions.
 - The location of the utilities is approximate only, and the exact location should be determined by consulting the municipal authorities and utility companies concerned. The Contractor shall prove the location of utilities and shall be responsible for adequate protection from damage.
 - All dimensions shown are to be verified on site prior to any construction. No deviations are to be made from the layouts as shown on this plan without prior consultation with the Landscape Architect and Owner.
 - Obtain approval of Landscape Architect for granular base and layout of all pavement areas prior to construction.
 - Stake planting locations and receive approval of Landscape Architect, prior to excavation of any planting pits. No substitutions of plant material shall be made without prior approval of the Landscape Architect.
 - Where clay is encountered proper drainage must be ensured in tree/shrub pits, prior to planting. Have method approved by Landscape Architect.
 - All sodded areas to receive a minimum of 150mm of topsoil over graded sub-base. If sod with mesh is used, mesh to be removed completely during sodding operations. Sod shall come from an approved source and shall be laid within 24 hours of being cut in the nursery. Only nursery sod shall be used.
 - Final subgrade is to be approved by the Landscape Architect prior to sod being laid.
 - Maintain positive surface runoff through the entire construction period.
 - Reinstate all areas and items damaged as a result of construction activities.



LANDSCAPE / PLANTING PLAN
Scale: 1:400



LEGEND

- PROPERTY LINE
- CHAIN LINK FENCE
- LIGHT STANDARD
- PRECAST CONCRETE PAVERS
- CONCRETE PAVEMENT / WALKWAY
- SOD
- MULCHED PLANTING BED
- DECORATIVE ROCKS
- STREET TREES

THIS PLAN IS ISSUED FOR SITE PLAN CONTROL SUBMISSION ONLY. ADDITIONAL DETAILING AND SPECIFICATIONS ARE REQUIRED PRIOR TO TENDERING OR CONSTRUCTION.

6		
5		
4		
3		
2	Issued for Site Plan Control	2020/09/18
1	Issued for Review	2020/08/26



N45 ARCHITECTURE INC.
71 Bank Street, 7th Floor - Ottawa, Ontario, K1P 5N2
tel. 613.224.0095 fax 613.224.9811

Ruhland & Associates Ltd
200-1750 Courtwood Crescent, Ottawa, Ontario K2C 2B5
P (613) 224-4744 x 222 T (613) 224-1131 info@rala.ca www.rala.ca

project
PUROLATOR DISTRIBUTION KANATA
1400 UPPER CANADA STREET, KANATA, ON

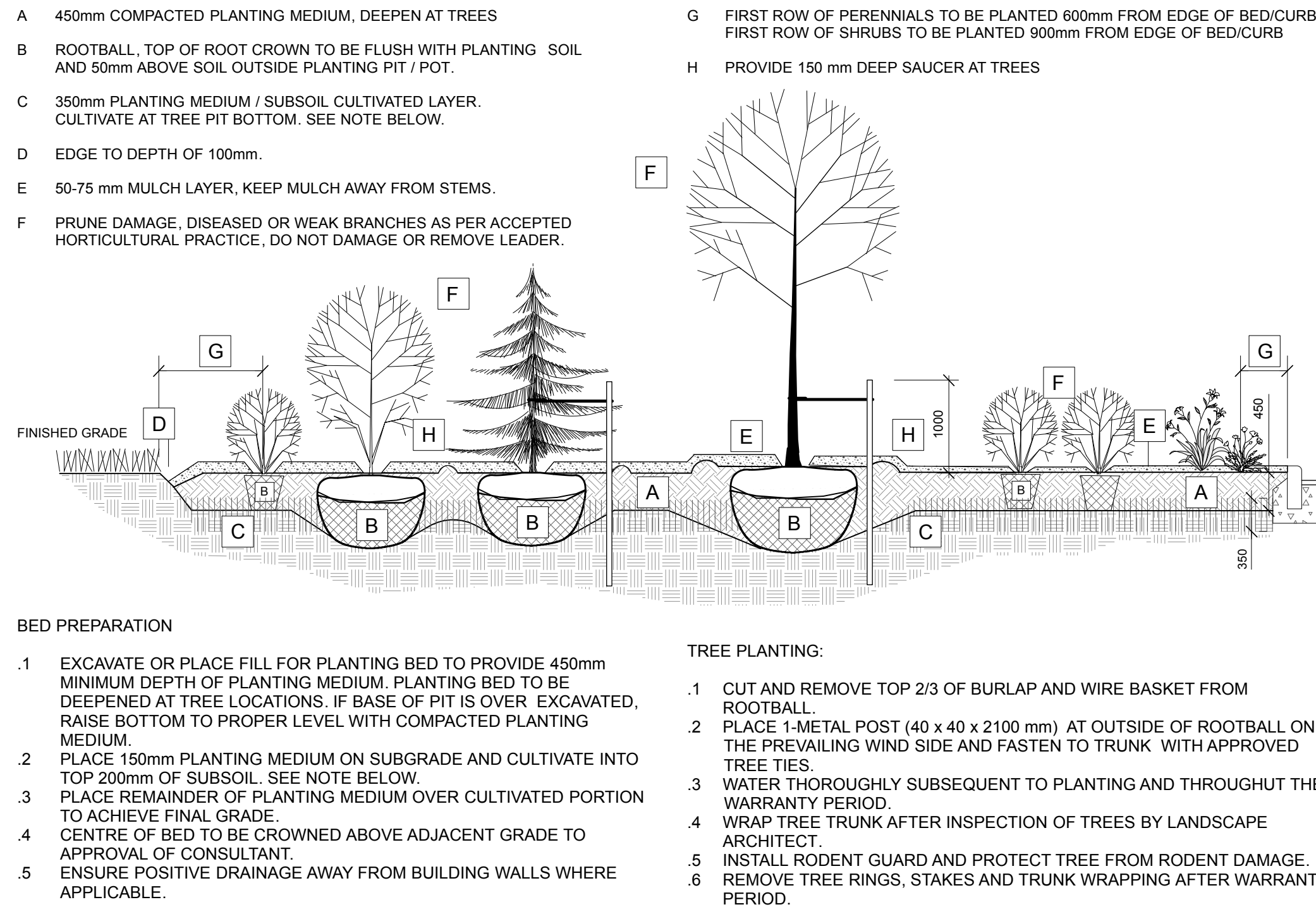
drawing title
LANDSCAPE / PLANTING PLAN

scale	As Shown	drawn by	T. F. / A.A.	designed by	A. A. / M.R.
date	Jan 2020	checked by	M. Ruhland	plot date	

project number	19-1603	drawing number	L - 01
----------------	---------	----------------	---------------

Contractor to check and verify all dimensions on the job

PLANT LIST					
CODE	NO	BOTANICAL NAME	COMMON NAME	SIZE	REMARKS
STANDARD PLANTING					
77 Trees					
ArAS	5	Acer rubrum 'Autumn Spire'	Red Maple	50mm caliper	WB Staked
As	3	Acer saccharum	Sugar Maple	70mm caliper	WB Staked
AsBC	3	Acer saccharum 'Barrett Cole'	Apollo Sugar Maple	50mm caliper	WB Staked
Ac	8	Amelanchier canadensis	Serviceberry	45mm caliper	WB, Staked
Co	4	Celtis occidentalis	Hackberry	90mm caliper	WB Staked
CoC	2	Celtis occidentalis 'Chicagoland'	Chicagoland Hackberry	60mm caliper	WB Staked
CoPS	2	Celtis occidentalis 'Prairie Sentinel'	Prairie Sentinel Hackberry	60mm caliper	WB Staked
GbAG	3	Ginkgo biloba 'Autumn Gold'	Autumn Gold Maidenhair Tree	60mm caliper	WB Staked
GIS	8	Gleditsia triacanthos inermis 'Shademaster'	Gleditsia Shademaster	90mm caliper	WB Staked
Pg	8	Picea glauca	White Spruce	200 cm ht	WB, Staked
Pp	10	Picea pungens	Colorado Spruce	200 cm ht	WB, Staked
Qm	8	Quercus macrocarpa	Burr Oak	70mm caliper	WB, Staked
Qr	4	Quercus rubra	Northern Red Oak	70mm caliper	WB Staked
SrIP	5	Syringa reticulata 'Ivory Pillar'	Ivory Pillar Tree Lilac	45mm caliper	WB Staked
UF	4	Ulmus 'Frontier'	Frontier Elm	70mm caliper	WB Staked
901 Shrubs					
CoBB	20	Cephalanthus occidentalis	Buttonbush	50 cm ht.	Potted
Cr	90	Cornus racemosa	Gray Dogwood	50 cm ht.	Potted
HaA	40	Hydrangea arborescens 'Annabelle'	Annabelle Hydrangea	2 gallon pot	Potted
Hp	70	Hypericum prolificum	Shrubby St. John's Wort	2 gallon pot	Potted
HpG	30	Hydrangea paniculata 'Grandiflora'	Peegee Hydrangea	60cm ht	Potted
JvSR	45	Juniperus virginiana 'Skyrocket' (J. scopulorum)	Skyrocket Juniper	150 cm	Potted
PfGD	100	Potentilla fruticosa 'Gold Drop'	Goldfinger Potentilla	40 cm ht.	Potted
Pm	10	Pinus mugo 'mugo'	Mugho Pine	75cm spd.	Potted
PoLD	30	Physocarpus opulifolius 'Little Devil'	Little Devil Ninebark	50cm ht.	Potted
RaLG	30	Rhus aromatica 'Gro-Low'	Gro-Low Fragrant Sumac	40 cm ht.	Potted
Rp	53	Rosa palustris	Swamp Rose	50 cm ht.	Potted
Rr	180	Rosa rugosa	Japanese Rose	3 year	Potted
Rt	30	Rhus typhina	Staghorn Sumac	80cm ht.	Potted
SbA	15	Spiraea bumalda 'Anthony Waterer'	Anthony Waterer Spirea	50cm ht.	Potted
SbG	25	Spiraea bumalda 'Goldflame'	Goldflame Spirea	50cm ht	Potted
SpMC	3	Syringa x prestoniae 'Miss Canada'	Miss Canada Lilac	125 cm ht	Potted
ToM	30	Taxus cuspidata 'Monlooc'	Emerald Spreader Japanese Yew	60cm spd	Potted
To(N)	30	Thuja occidentalis (Nursery grown)	White Cedar	200cm ht	WB Staked
ToF	24	Thuja occidentalis 'Fastigiata'	Pyramid Cedar	175cm ht	WB Staked
ToH	16	Thuja occidentalis 'Holmstrup'	Holmstrup Cedar	125cm ht	Potted
VI	20	Viburnum lentago	Nannyberry Viburnum	100 cm ht.	Potted
Vr	10	Viburnum rhytidophyllum	Leatherleaf Viburnum	200cm ht.	WB Staked
35 Vines					
Cj	10	Clematis x jackmanii	Jackman Clematis	3 year	Potted
LbDS	10	Lonicera x brownii 'Dropmore Scarlet'	Dropmore Scarlet Trumpet Honeysuckle	3 year	Potted
RJD	15	Rosa 'John Davis'	John Davis Explorer Rose	3 year	Potted
818 Ornamental Grasses					
Hs	160	Helictrochon sempervirens	Ornamental Oats	3 year	1 gallon pot
Pv	158	Panicum virgatum	Switch Grass	3 year	1 gallon pot
CaKF	500	Calamagrostis x acutiflora 'Karl Foerster'	Karl Foerster Feather Reed Grass	3 year	1 gallon pot
480 Perennials					
Ep	120	Echinacea purpurea	Purple Coneflower		15cm pot
He	120	Hemerocallis	Daylily		15cm pot
Is	120	Iris sibirica	Siberian Iris		15cm pot
RFG	120	Rudbeckia fulgida 'Goldsturm'	Goldsturm Black Eyed Susan		15cm pot



PLANTING DETAILS

GENERAL NOTES

- All general site information and conditions compiled from existing plans, surveys and consultant's field notes. Report all discrepancies prior to any work. No responsibility is born by the Consultant for unknown subsurface conditions.
- The location of the utilities is approximate only, and the exact location should be determined by consulting the municipal authorities and utility companies concerned. The Contractor shall prove the location of utilities and shall be responsible for adequate protection from damage.
- All dimensions shown are to be verified on site prior to any construction. No deviations are to be made from the layouts as shown on this plan without prior consultation with the Landscape Architect and Owner.
- Obtain approval of Landscape Architect for granular base and layout of all pavement areas prior to construction.
- Stake planting locations and receive approval of Landscape Architect, prior to excavation of any planting pits. No substitutions of plant material shall be made without prior approval of the Landscape Architect.
- Where clay is encountered proper drainage must be ensured in tree/shrub pits, prior to planting. Have method approved by Landscape Architect.
- All sodded areas to receive a minimum of 150mm of topsoil over graded sub-base. If sod with mesh is used, mesh to be removed completely during sodding operations. Sod shall come from an approved source and shall be laid within 24 hours of being cut in the nursery. Only nursery sod shall be used.
- Final subgrade is to be approved by the Landscape Architect prior to sod being laid.
- Maintain positive surface runoff through the entire construction period.
- Reinstate all areas and items damaged as a result of construction activities.

6		
5		
4		
3		
2	Issued for Site Plan Control	2020/09/18
1	Issued for Review	2020/08/26
no.	issue / revision	date

seal	
north	

N45 ARCHITECTURE INC.

71 Bank Street, 7th Floor - Ottawa, Ontario, K1P 5N2
tel. 613.224.0095 fax 613.224.9811

Ruhland & Associates Ltd

200-1750 Courtwood Crescent, Ottawa, Ontario K2C 2B5
P (613) 224-4744 x 222 F (613) 224-1131 info@ralia.ca www.ralia.ca

project

**PUROLATOR
DISTRIBUTION KANATA**
1400 UPPER CANADA STREET,
KANATA, ON

drawing title
**PLANT LIST / PLANTING
DETAILS**

scale As Shown	drawn by T. F. / A.A.	designed by A. A. / M.R.
date Jan 2020	checked by M. Ruhland	plot date
project number 19-1603	drawing number L - 02	

Contractor to check and verify all dimensions on the job