

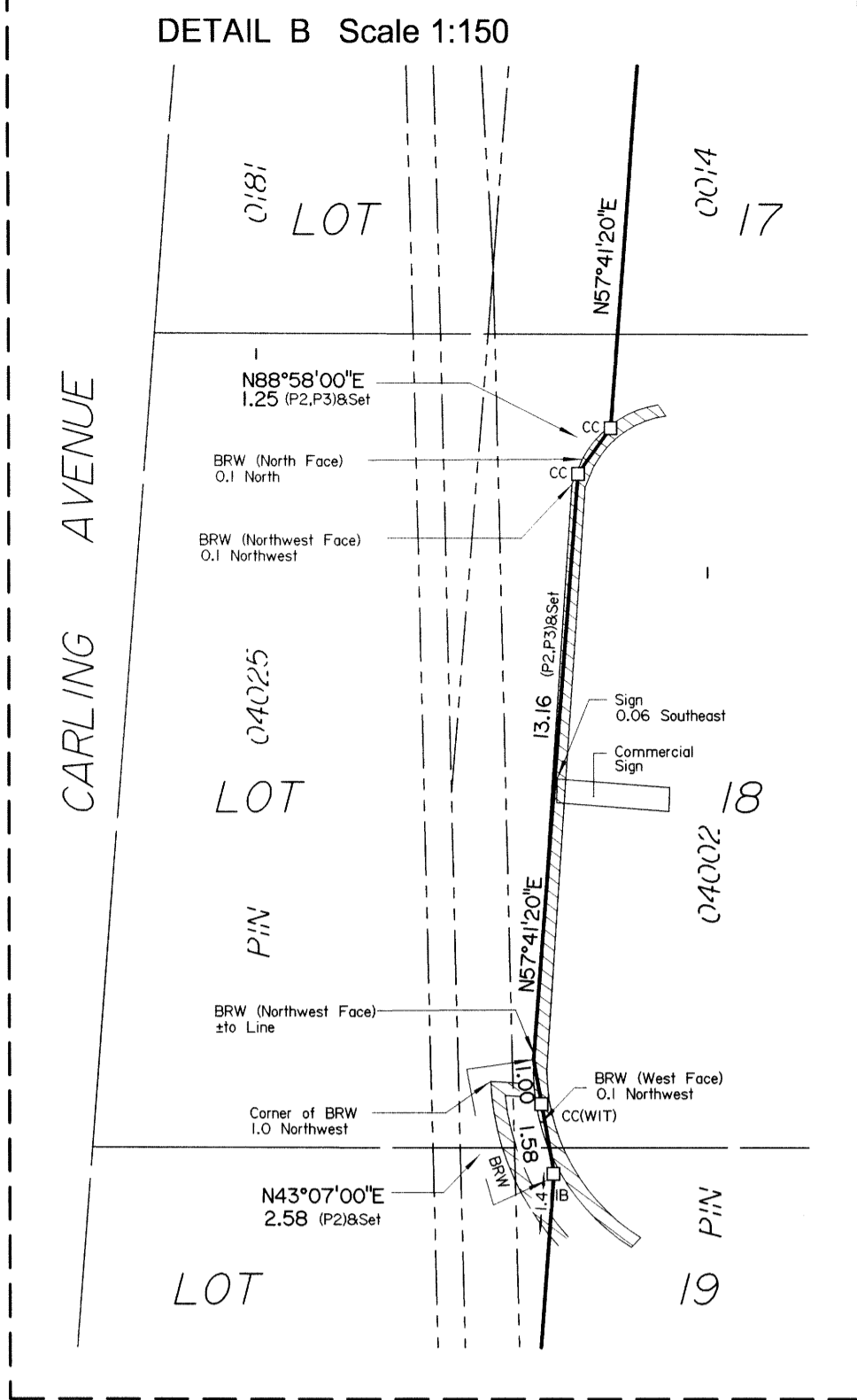
REGIONAL ROAD No. 38
CARLING AVENUE
(Formerly Manotick Street)

ROAD ALLOWANCE BETWEEN CONCESSION A (RIDEAU FRONT) & CONCESSION I (OTTAWA FRONT)

REGIONAL ROAD No. 63

MERIVALE ROAD (BY-LAW 285-63, INST. CR355748)

HUGH STREET (CLOSED BY BY-LAW 25-57, INST. CR355748)



Sarah Ezzio
SARAH EZZIO
PLANNER I
PLANNING, INFRASTRUCTURE & ECONOMIC
DEVELOPMENT DEPARTMENT, CITY OF OTTAWA

APPROVED SURVEYOR'S REAL PROPERTY REPORT
By Sarah Ezzio at 4:31 pm, Sep 11, 2020

PART 1 Plan of
LOTS 10, 11, 15, 16,
PART OF LOTS 12, 13, 14, 17, 18, 19, 20
PART OF BLOCK 8
PART OF HUGH STREET
(CLOSED BY BY-LAW 25-57, INST. CR355748)
REGISTERED PLAN 221
CITY OF OTTAWA
Surveyed by Annis, O'Sullivan, Vollebek Ltd.

Scale 1:250
Metric
DISTANCES SHOWN ON THIS PLAN ARE IN METRES AND
CAN BE CONVERTED TO FEET BY DIVIDING BY 0.3048

Surveyor's Certificate
I CERTIFY THAT:
1. This survey and plan are correct and in accordance with the
Surveyors Act, the Surveyors Act, the Land Titles Act and the
regulations made under them.
2. The survey was completed on the 10th day of March, 2014.
Date *March 12, 2014*
E. H. Hervey
Ontario Land Surveyor

PART 2
THIS PLAN MUST BE READ IN CONJUNCTION WITH
SURVEY REPORT DATED... MARCH 12, 2014

ANNIS, O'SULLIVAN, VOLLEBEK LTD. grants to
177382 ONTARIO, INC. ("The Client"), their successors, mortgagees, and other
related parties, permission to use original, signed, sealed copies of the Surveyor's
Real Property Report in transactions involving The Client.

- Notes & Legend**
- Denotes Survey Monument Planted
 - Survey Monument Found
 - S— Standard Iron Bar
 - SSB— Short Standard Iron Bar
 - I— Iron Bar
 - IB— Iron Bar (0.3 Long)
 - RP— Rock Post
 - CC— Cut Cross
 - CP— Concrete Pin
 - M— Measured
 - (WT)— Witness
 - (AG)— Annis, O'Sullivan, Vollebek Ltd.
 - LF— Lattice Fence
 - MF— Metal Fence
 - BF— Board Fence
 - CLF— Chain Link Fence
 - MR— Metal Rail
 - CL— Centreline
 - WRW— Wooden Retaining Wall
 - BRW— Brick Retaining Wall
 - OW— Overhead Wire
 - UP— Utility Pole
 - AN— Anchor
 - LS— Light Standard
 - (P)— Registered Plan 221
 - (P1)— (725) Plan April 18, 1986
 - (P2)— Plan SR-11009
 - (P3)— Plan 4R-6193
 - (P4)— (857) Plan, February 25, 1985
 - (P5)— (990) Plan, June 15, 1992

ASSOCIATION OF ONTARIO
LAND SURVEYORS
PLAN SUBMISSION FORM
1891674
THIS PLAN IS NOT VALID UNLESS
IT IS AN EMBOSSED ORIGINAL
COPY ISSUED BY THE SURVEYOR
IN ACCORDANCE WITH
REGULATION 1028, SECTION 29 (3).
Bearings are grid bearings, derived from the northwesterly limit of
Thames Street having a bearing of N57°42'20"E and are referred to
the Central Meridian of MTM Zone 9 (76°30' West Longitude)
NAD-83 (original).
© Annis, O'Sullivan, Vollebek Ltd. 2014. THIS PLAN IS PROTECTED BY COPYRIGHT.
ANNIS, O'SULLIVAN, VOLLEBEK LTD.
14 Concourse Gate, Suite 500
Nepean, Ont. K2E 7S6
Phone: (613) 721-0550 / Fax: (613) 721-1079
Email: nepean@anniso.com
Ontario
Land Surveyors (Lic. No. 13479/14, Nepean, Ont. Lic. No. 20, P.L. 221, D.F.)

DETAIL A Scale 1:150

