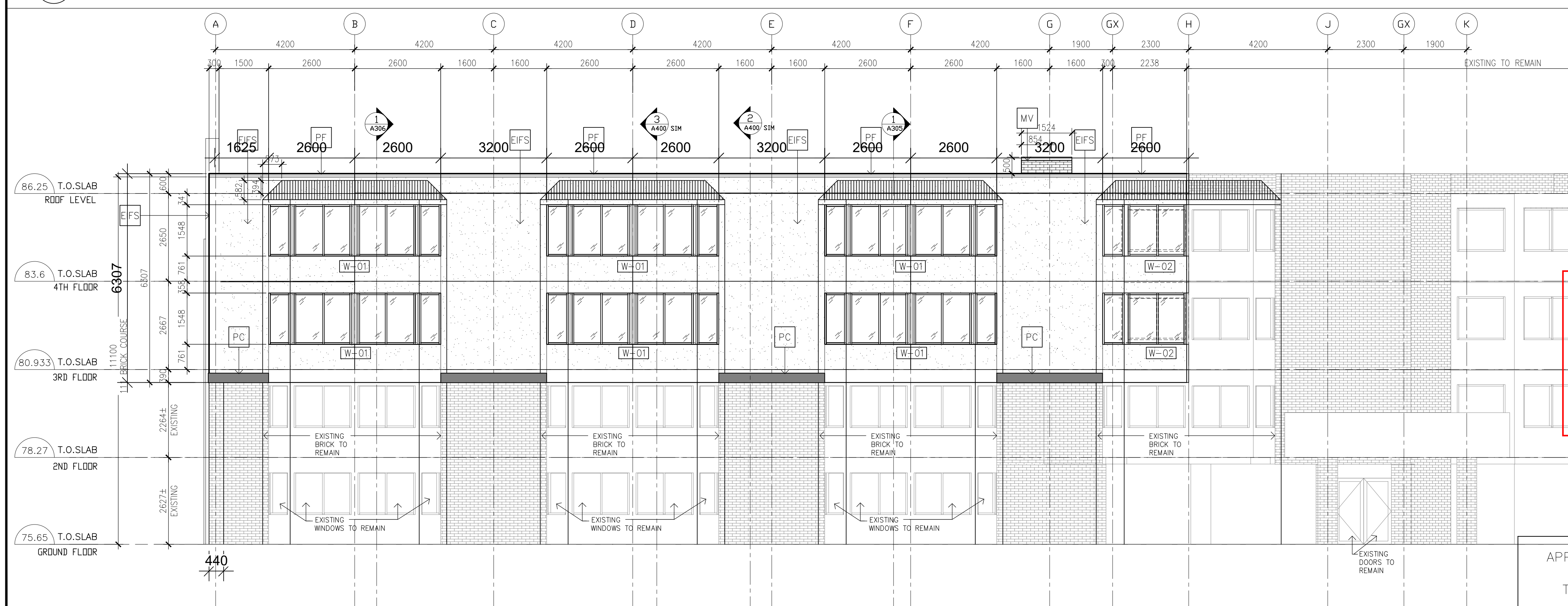


2 EAST ELEVATION  
A301 SCALE: 1:75



1 WEST ELEVATION  
A301 SCALE: 1:75

- LEGEND:
- EIFS EXTERIOR INSULATION AND FINISH SYSTEM
  - MV BRICK VANNER TO MATCH EXISTING
  - PF PREFINISHED METAL FLASHING
  - AP ALUMINUM PANEL
  - CW CURTAIN WALL
  - PC PRECAST CONCRETE
  - EIFS-1 PRECAST CONCRETE COLOUR -1
  - EIFS-2 PRECAST CONCRETE COLOUR -2
  - EIFS-3 PRECAST CONCRETE COLOUR -3
  - EIFS-4 PRECAST CONCRETE COLOUR -4
  - EIFS-5 PRECAST CONCRETE COLOUR -5



**ANGELO MATTIA SPADOLA ARCHITECT**  
200-1645 RUSSELL ROAD, OTTAWA, ONTARIO K1G 4G5  
TEL 613 228 7190

NO.	REVISIONS	DATE
1	ISSUED FOR PROGRESS	08-06-18
2	ISSUED FOR 60% PROGRESS	12-10-18
3	ISSUED FOR COORDINATION	01-27-19
4	ISSUED FOR SITE PLAN APPLICATION	08-26-19
5	ISSUED FOR BUILDING PERMIT	12-10-19
6	RESPONSE TO SITE PLAN CITY COMMENTS	02-22-20
7	RESPONSE TO SITE PLAN CITY COMMENTS	04-APR-20
8		
9		
10		
11		
12		

NOTE:  
THE CONTRACTOR SHALL CHECK AND VERIFY ALL DIMENSIONS AND REPORT ALL ERRORS AND OMISSIONS TO THE ARCHITECT FOR HIS WRITTEN PERMISSION BEFORE PROCEEDING WITH WORK.  
NOT FOR CONSTRUCTION UNLESS SIGNED BY THE ARCHITECT.

CONSULTANTS:  
**STRUCTURAL/MECHANICAL ELECTRICAL/CIVIL**

**exp.** EXP. 2850 QUEENSWAY DR., SUITE 100  
OTTAWA, ONTARIO K2B 8H6 CANADA  
PHONE (613) 688-1899

**LANDSCAPE:**  
STANTEC 1331 CLYDE AVE., SUITE 400  
OTTAWA, ONTARIO K2C 3G4  
CANADA PHONE (613) 722-4420

**SURVEYOR:**  
**ANNIS O' SULLIVAN VOLLEBEKK**  
14 CONCORSE GATE, SUITE 500  
OTTAWA, ONTARIO K2E 7S6 CANADA  
PHONE (613) 727-0850

**APPROVED**  
By Sarah Ezzio at 4:24 pm, Sep 11, 2020

*Sarah Ezzio*  
**SARAH EZZIO**  
PLANNER I  
PLANNING, INFRASTRUCTURE & ECONOMIC  
DEVELOPMENT DEPARTMENT, CITY OF OTTAWA

**D07-12-19-0153**

APPROVED  REFUSED   
THIS \_\_\_\_ DAY OF \_\_\_\_, 20 \_\_\_\_

LILY XU, MCIP, RPP, MANAGER  
DEVELOPMENT REVIEW SOUTH  
PLANNING, INFRASTRUCTURE AND ECONOMIC  
DEVELOPMENT DEPARTMENT, CITY OF OTTAWA

PROJECT:  
**BEST WESTERN PLUS ADDITION**

LOCATION:  
**1272 CARLING AVE.  
OTTAWA, ONTARIO**

DWG TITLE:  
**WEST ELEVATION  
EAST ELEVATION**

DATE: 2018-08-22

SCALE: 1:50

FILE NAME: PROJECT #:

DESIGNED BY: AMS

DRAWN BY: JV

APPROVED BY: AMS

DRAWING NO:  
**A301**  
OF  
**ONTARIO ASSOCIATION OF ARCHITECTS**  
ANGELO M. SPADOLA  
LICENCE 4339

APPROVED  REFUSED

THIS \_\_\_\_ DAY OF \_\_\_\_, 20\_\_

LILY XU, MCIP, RPP, MANAGER  
DEVELOPMENT REVIEW SOUTH  
PLANNING, INFRASTRUCTURE AND ECONOMIC  
DEVELOPMENT DEPARTMENT, CITY OF OTTAWA

- LEGEND:
- EIFS EXTERIOR INSULATION AND FINISH SYSTEM
  - MV BRICK VANNER TO MATCH EXISTING
  - PF PREFINISHED METAL FLASHING
  - AP ALUMINUM PANEL
  - CW CURTAIN WALL
  - PC PRECAST CONCRETE
  - EIFS-1 PRECAST CONCRETE COLOUR -1
  - EIFS-2 PRECAST CONCRETE COLOUR -2
  - EIFS-3 PRECAST CONCRETE COLOUR -3
  - EIFS-4 PRECAST CONCRETE COLOUR -4
  - EIFS-5 PRECAST CONCRETE COLOUR -5



**ANGELO MATTIA SPADOLA ARCHITECT**  
200-1645 RUSSELL ROAD, OTTAWA, ONTARIO K1G 4G5  
TEL 613 228 7190

NO.	REVISIONS	DATE
1	ISSUED FOR PROGRESS	08-06-18
2	ISSUED FOR 60% PROGRESS	12-10-18
3	ISSUED FOR COORDINATION	01-27-19
4	ISSUED FOR SITE PLAN APPLICATION	08-26-19
5	ISSUED FOR BUILDING PERMIT	12-10-19
6	RESPONSE TO SITE PLAN CITY COMMENTS	02-22-20
7	RESPONSE TO SITE PLAN CITY COMMENTS	04-APR-20
8		
9		
10		
11		
12		

NOTE:  
THE CONTRACTOR SHALL CHECK AND VERIFY ALL DIMENSIONS AND REPORT ALL ERRORS AND OMISSIONS TO THE ARCHITECT FOR HIS WRITTEN PERMISSION BEFORE PROCEEDING WITH WORK.  
NOT FOR CONSTRUCTION UNLESS SIGNED BY THE ARCHITECT.

CONSULTANTS:  
**STRUCTURAL/MECHANICAL  
ELECTRICAL/CIVIL**  
exp. EXP. 2850 QUEENSWAY DR., SUITE 100  
OTTAWA, ONTARIO K2B 8H6 CANADA  
PHONE (613) 688-1899

LANDSCAPE:  
STANTEC 1331 CLYDE AVE., SUITE 400  
OTTAWA, ONTARIO K2C 3G4  
CANADA PHONE (613) 722-4420

SURVEYOR:  
ANNIS O' SULLIVAN VOLLEBEKK  
14 CONCOURSE GATE, SUITE 500  
OTTAWA, ONTARIO K2E 7S6 CANADA  
PHONE (613) 727-0850

PROJECT:  
**BEST WESTERN PLUS  
ADDITION**

LOCATION:  
**1272 CARLING AVE.  
OTTAWA, ONTARIO**

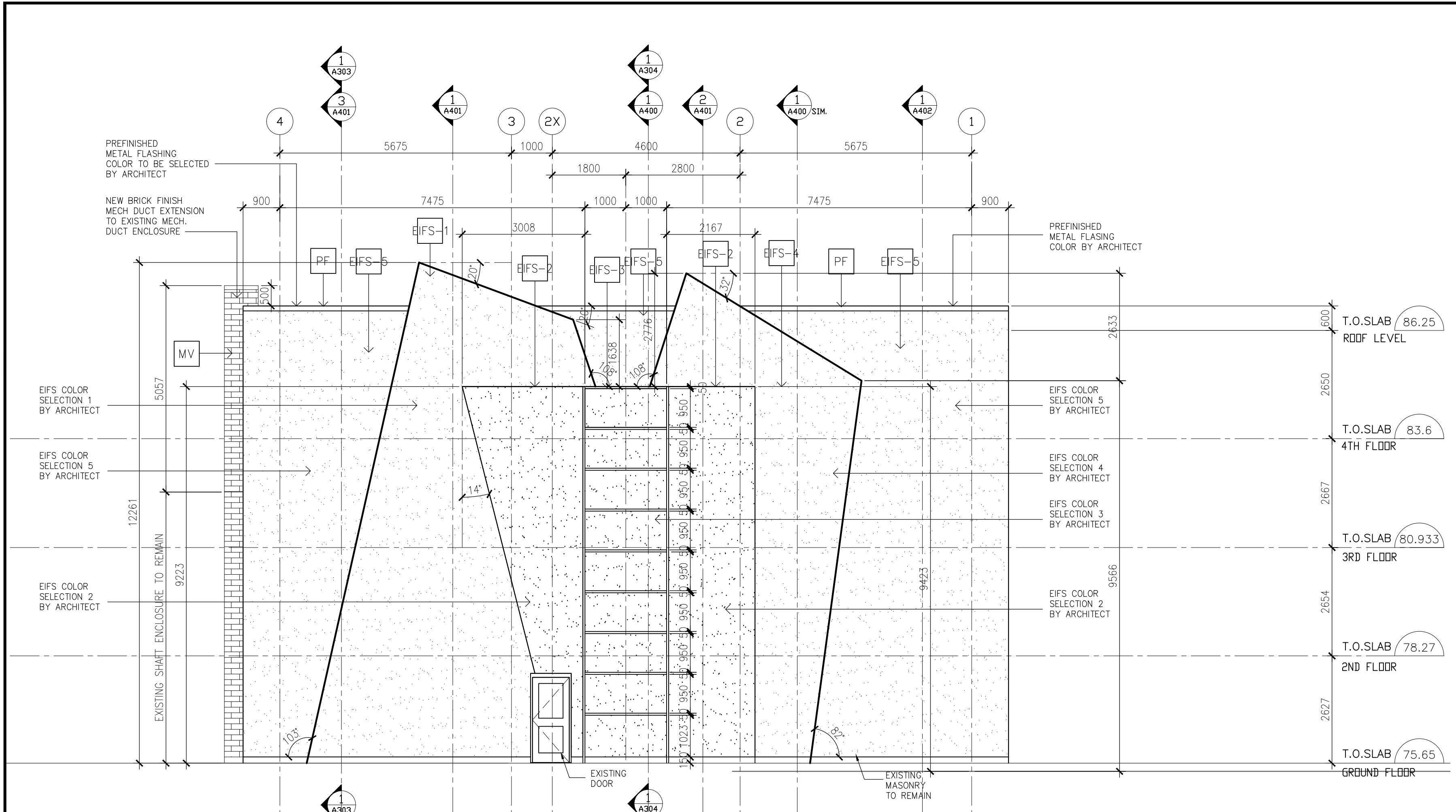
DWG TITLE:  
**NORTH ELEVATION  
SOUTH ELEVATION**

DATE: 2018-08-22  
SCALE: 1:50  
FILE NAME: PROJECT #:  
DESIGNED BY: AMS  
DRAWN BY: JV  
APPROVED BY: AMS

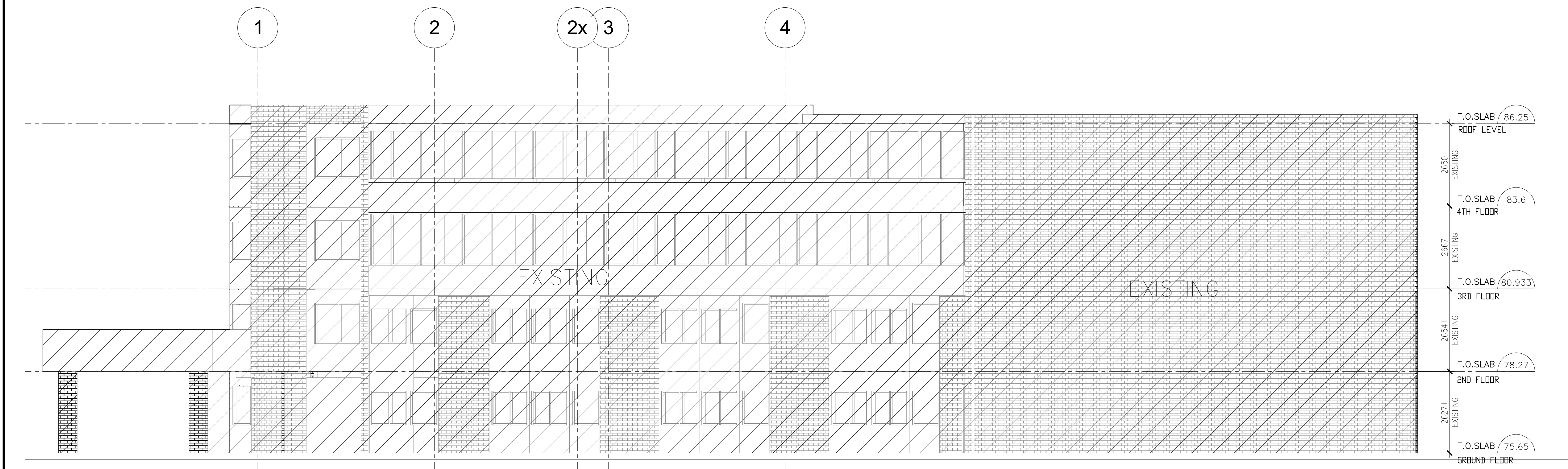
DRAWING NO:  
**A302**  
ONTARIO ASSOCIATION OF ARCHITECTS  
ANGELO M. SPADOLA  
LICENCE 4339

*Sarah Ezzio*  
**SARAH EZZIO  
PLANNER I  
PLANNING, INFRASTRUCTURE & ECONOMIC  
DEVELOPMENT DEPARTMENT, CITY OF OTTAWA**

**APPROVED**  
By Sarah Ezzio at 4:24 pm, Sep 11, 2020



2 NORTH ELEVATION  
SCALE: 1:75



1 SOUTH ELEVATION  
SCALE: 1:75

**D07-12-19-0153**