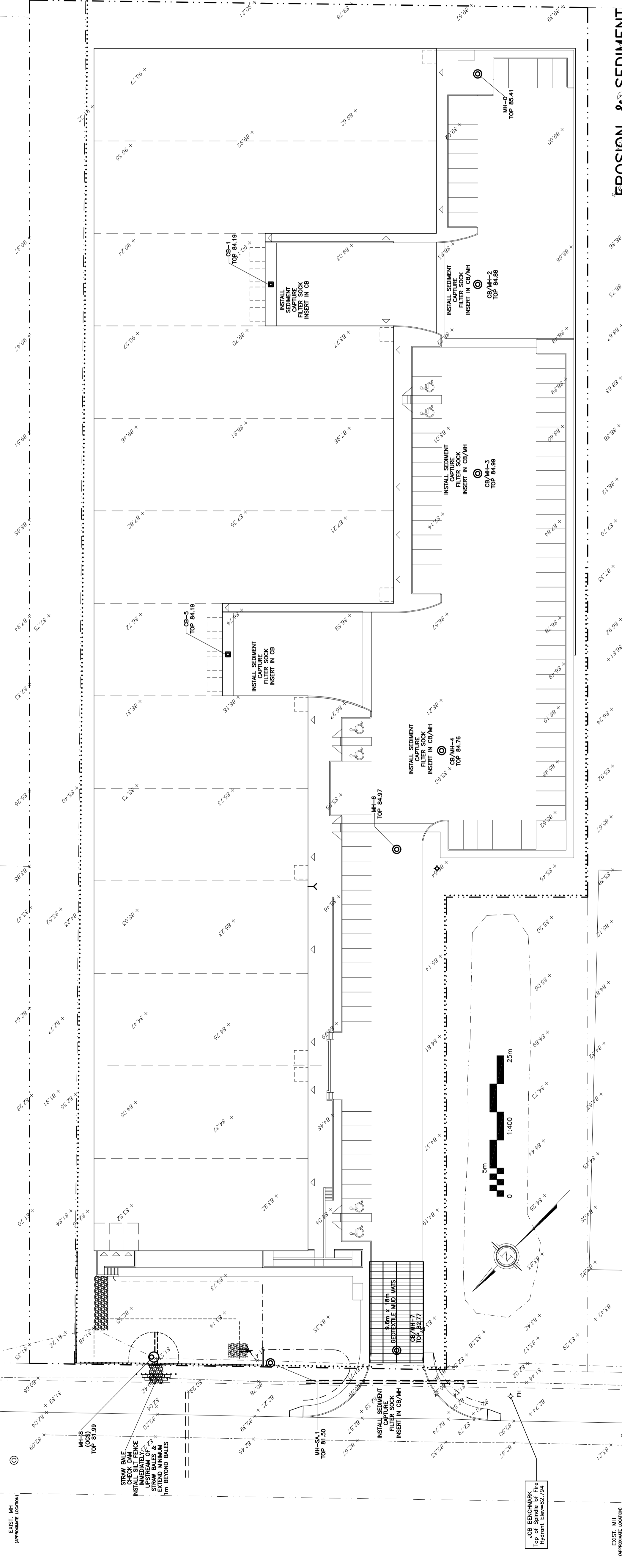
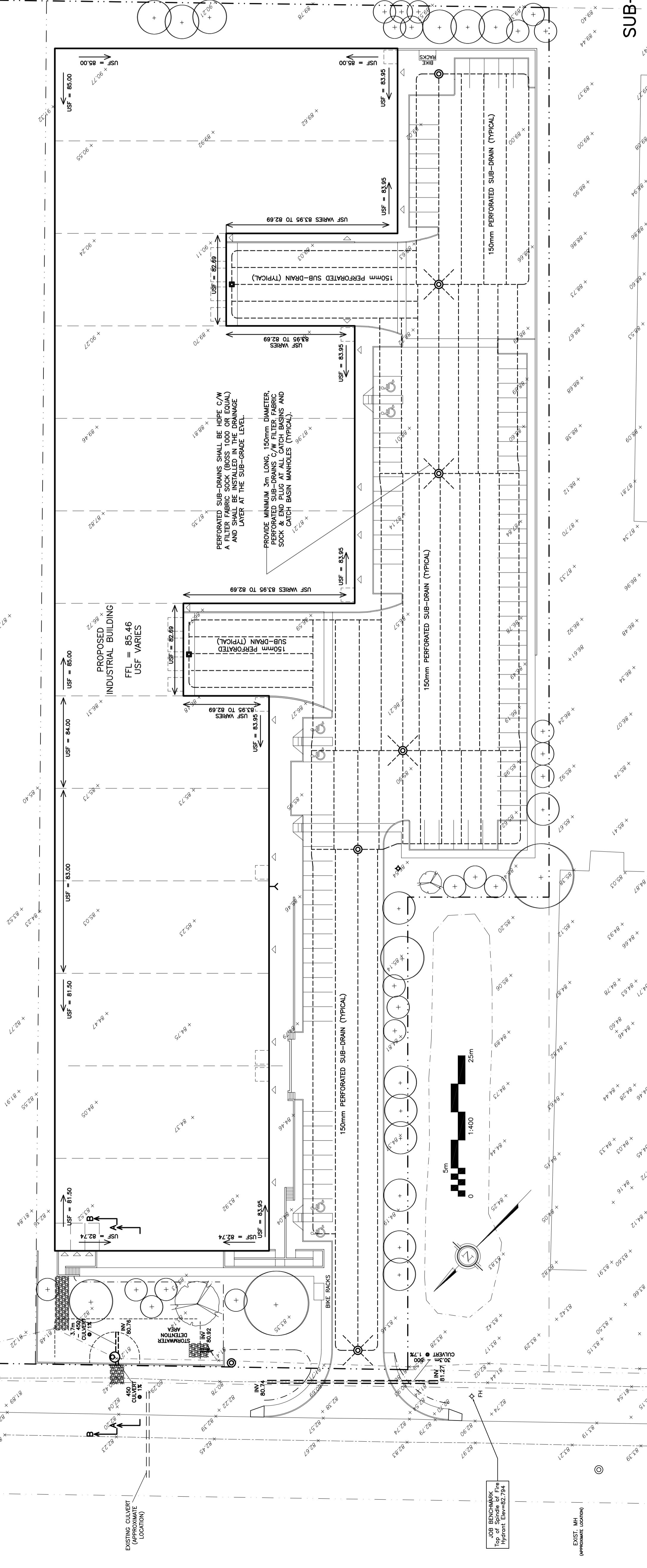


REFER TO NOTES & DETAILS ON DRAWINGS C-3, C-4 & C-5

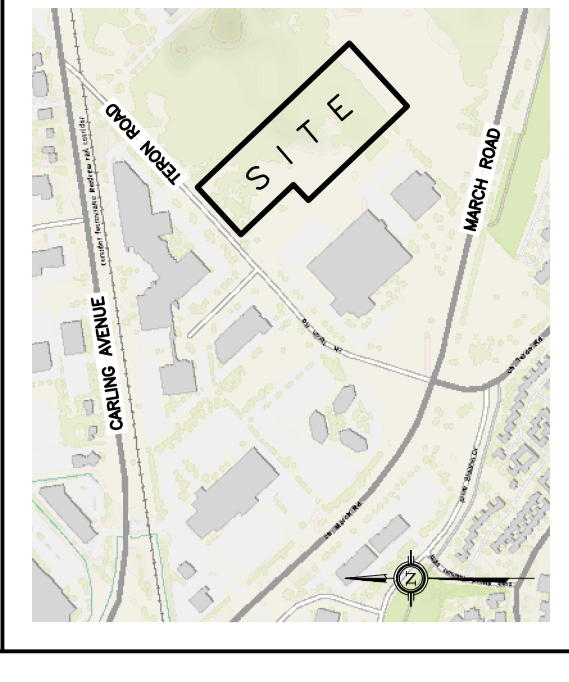


**EROSION & SEDIMENT CONTROL PLAN**

REFER TO NOTES & DETAILS ON DRAWINGS C-3, C-4 & C-5



**SUB-DRAIN LAYOUT**



No.	DATE	REVISION
1	FEB 11-20	ISSUED FOR COORDINATION
2	FEB 13-20	ISSUED FOR APPROVAL
3	MAY 13-20	RE-ISSUED FOR APPROVAL
4	JUL 13-20	RE-ISSUED FOR APPROVAL
5	SEP 1-20	RE-ISSUED FOR APPROVAL

**D. B. GRAY ENGINEERING INC.**  
 Surveying, Management, Consulting & Planning - Storm & Sanitary Sewers - Erosion  
 700 Long Point Circle  
 Ottawa, Ontario K1G 9W6  
 613-425-8044  
 dgray@dbgrayengineering.com

Project:  
**PROPOSED 1 STOREY INDUSTRIAL WAREHOUSE**  
 1243 TERON ROAD  
 OTTAWA, ONTARIO

Drawing Title:  
**EROSION & SEDIMENT CONTROL PLAN AND SUB-DRAIN LAYOUT**

Drawn: D.B.G.  
 Hor. Scale: 1:400  
 Vert. Scale:  
 Date: OCT 18-19  
 Job No.: 19057

Drawn By:  
**C-2**  
 of 6

NOT VALID UNLESS SIGNED & DATED

D07-12-20-0017

#18115