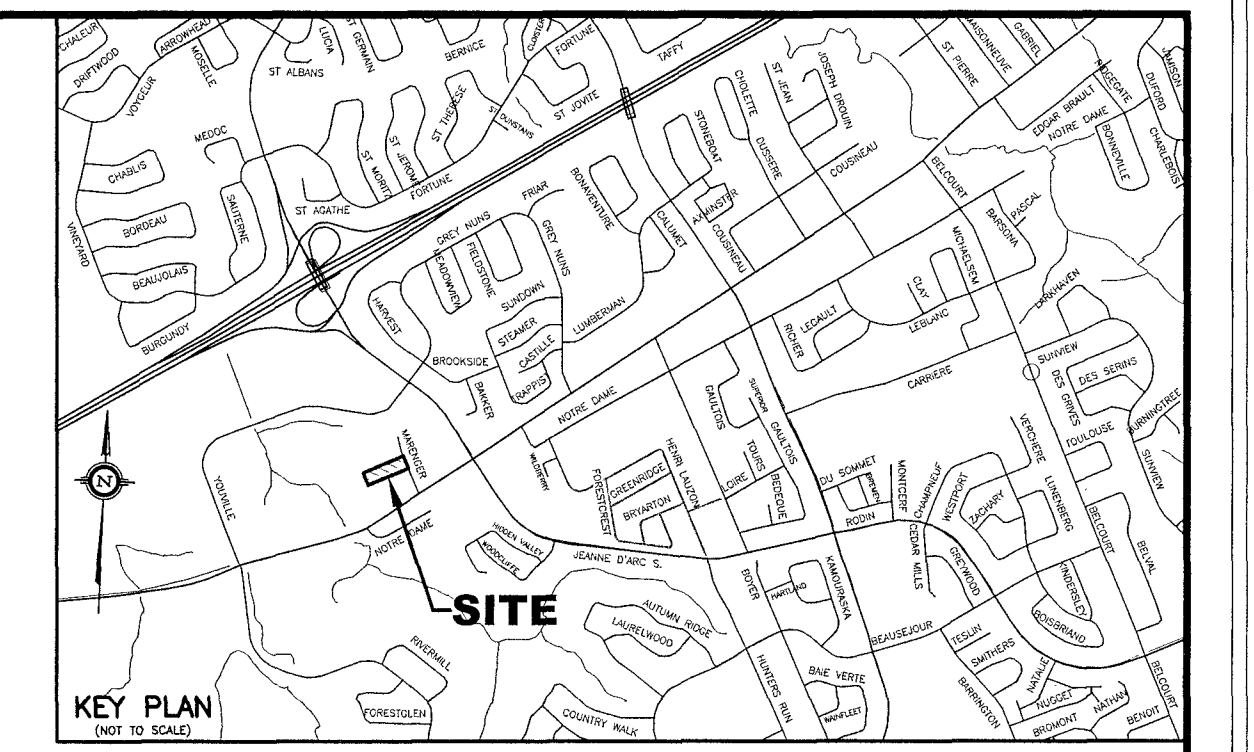
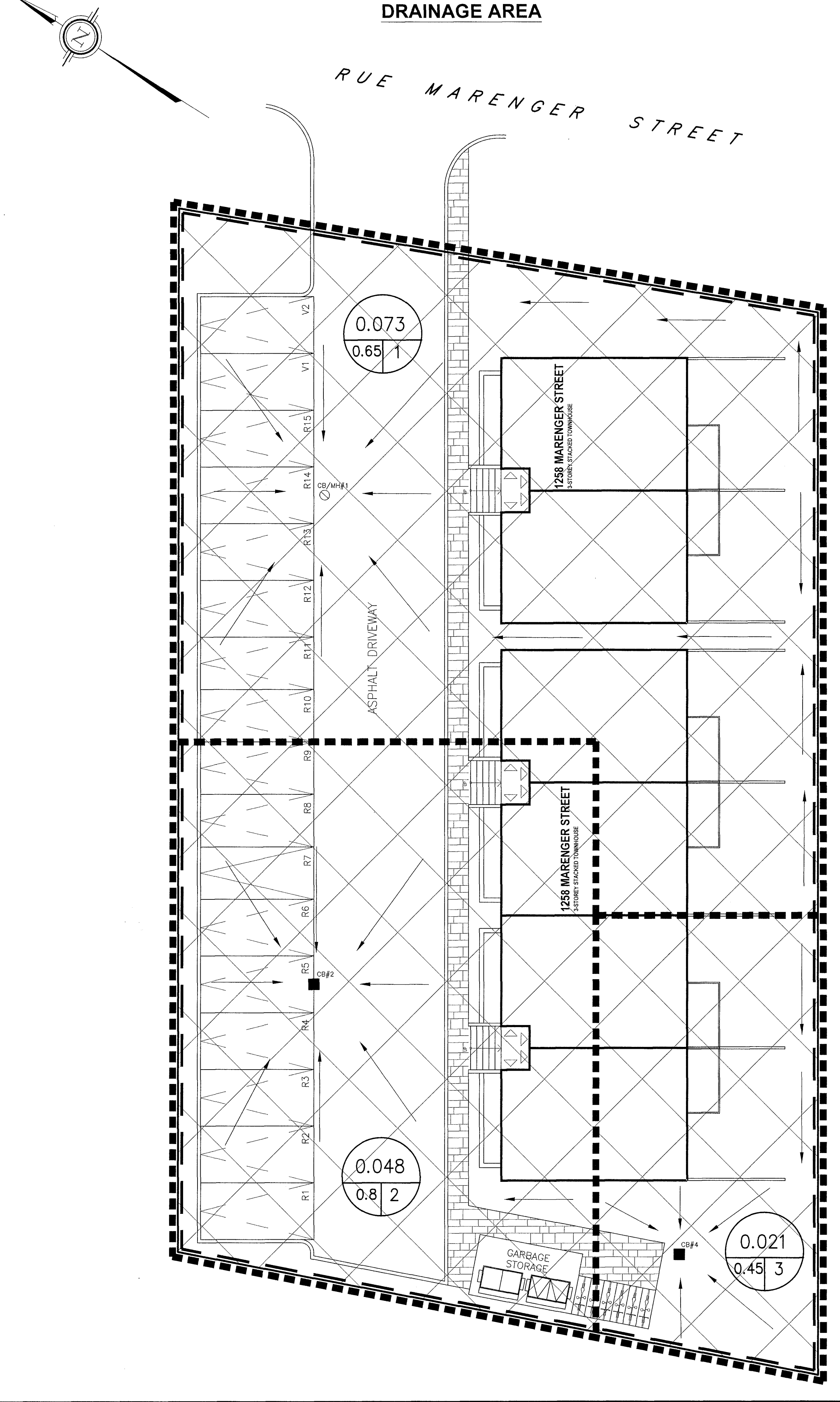
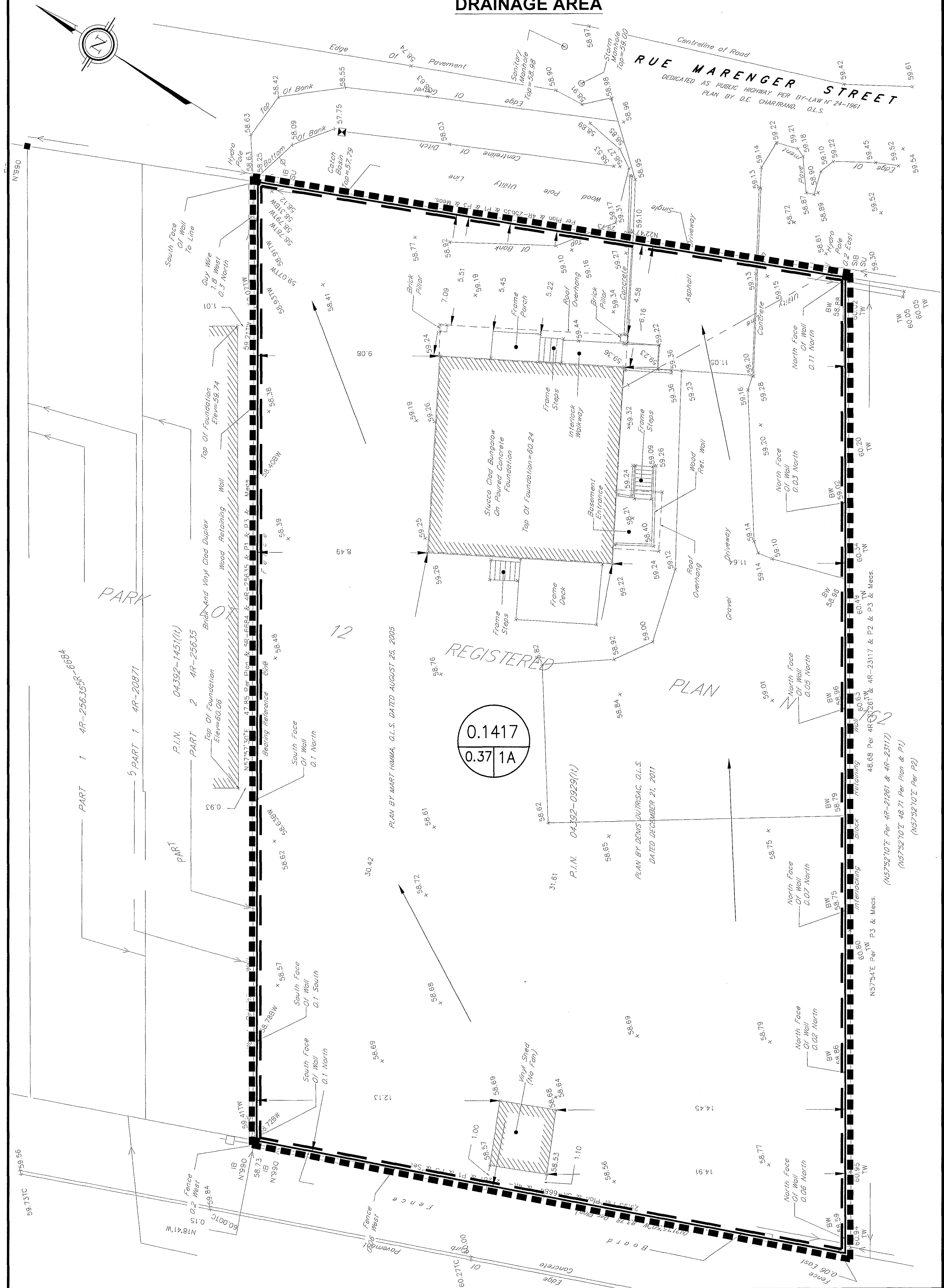


PRE - DEVELOPMENT STORM DRAINAGE AREA

POST DEVELOPMENT STORM DRAINAGE AREA



- LEGEND**
- PROPOSED CATCH BASIN MANHOLE
 - PROPOSED CATCH BASIN
 - DEVELOPMENT LOT LIMITS
 - LIMIT OF STORM DRAINAGE AND CONTROLLED AREA
 - DENOTES STORMWATER FLOW DIRECTION
 - DRAINAGE AREA IN HECTARES
DRAINAGE NODE NUMBER
 - COEFFICIENT OF RUNOFF
 - CONTROLLED DRAINAGE AREA

NOTE:

- DRAINAGE AREA IDENTIFIED AS: NODE #1, #2, AND #3 ARE CONTROLLED POST DEVELOPMENT AREAS
- DEVELOPMENT AREA OF SITE = 1417.37 sq.m.

NO.	REVISION	DATE	BY

SCALE

0 1.25m 3.75m 6.25m

1:125 HORIZONTAL

VERTICAL

DESIGN	T.L.M.
CHECKED	T.L.M.
DRAWN BY	P.M.
CHECKED	T.L.M.
APPROVED	T.L.M.

PROJECT

1258 MARENGER STREET
PART OF PARK LOT 12
REGISTERED PLAN 162
CITY OF OTTAWA

DRAWING TITLE

STORM DRAINAGE AREA PLAN

**T.L. MAK ENGINEERING CONSULTANTS LTD.
CONSULTING ENGINEERS**

PROJECT No.	DATE	DRAWING No.
819-98	MARCH 2020	D-1