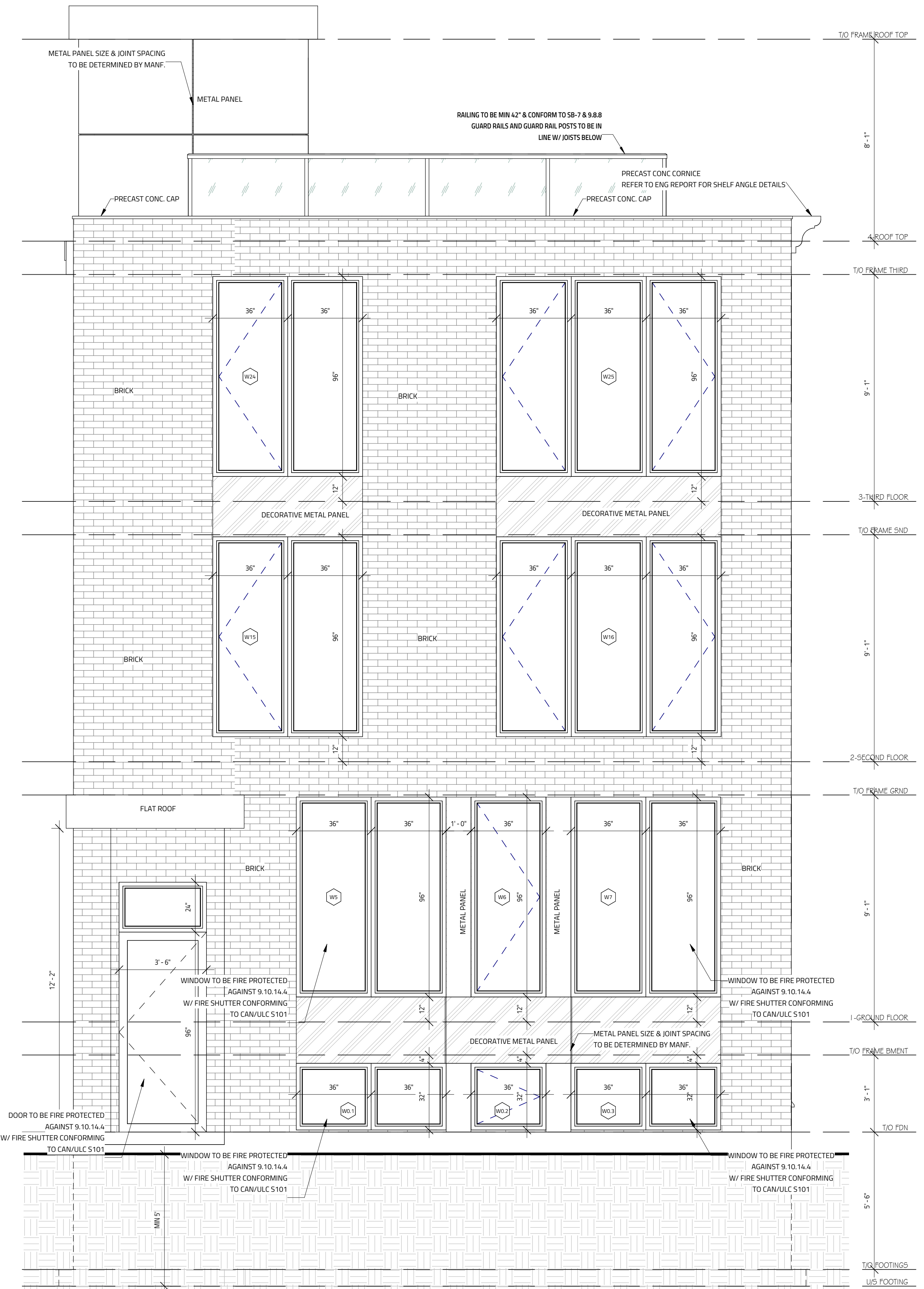


1 FRONT ELEVATION  
SCALE: 3/8" = 1'-0"



2 REAR ELEVATION  
SCALE: 3/8" = 1'-0"

**APPROVED**  
By Jenny Kluge at 4:21 pm, Aug 31, 2020

*J Kluge*  
**JENNY KLUKE**  
PLANNER  
PLANNING, INFRASTRUCTURE & ECONOMIC  
DEVELOPMENT DEPARTMENT, CITY OF OTTAWA

I REVIEW & TAKE RESPONSIBILITY FOR THE DESIGN WORK ON BEHALF OF A FIRM REGISTERED UNDER SUBSECTION 3.2.4 OF THE OBC 2012. I AM QUALIFIED & THE FIRM IS REGISTERED IN THE APPROPRIATE CLASSES/CATEGORIES.

THIS DRAWING SHALL NOT BE USED FOR CONSTRUCTION UNTIL SIGNED AND DATED BY THE DESIGNER

FIRM BCIN: 45801  
INDIVIDUAL BCIN: 61176  
MARCH 9, 2020

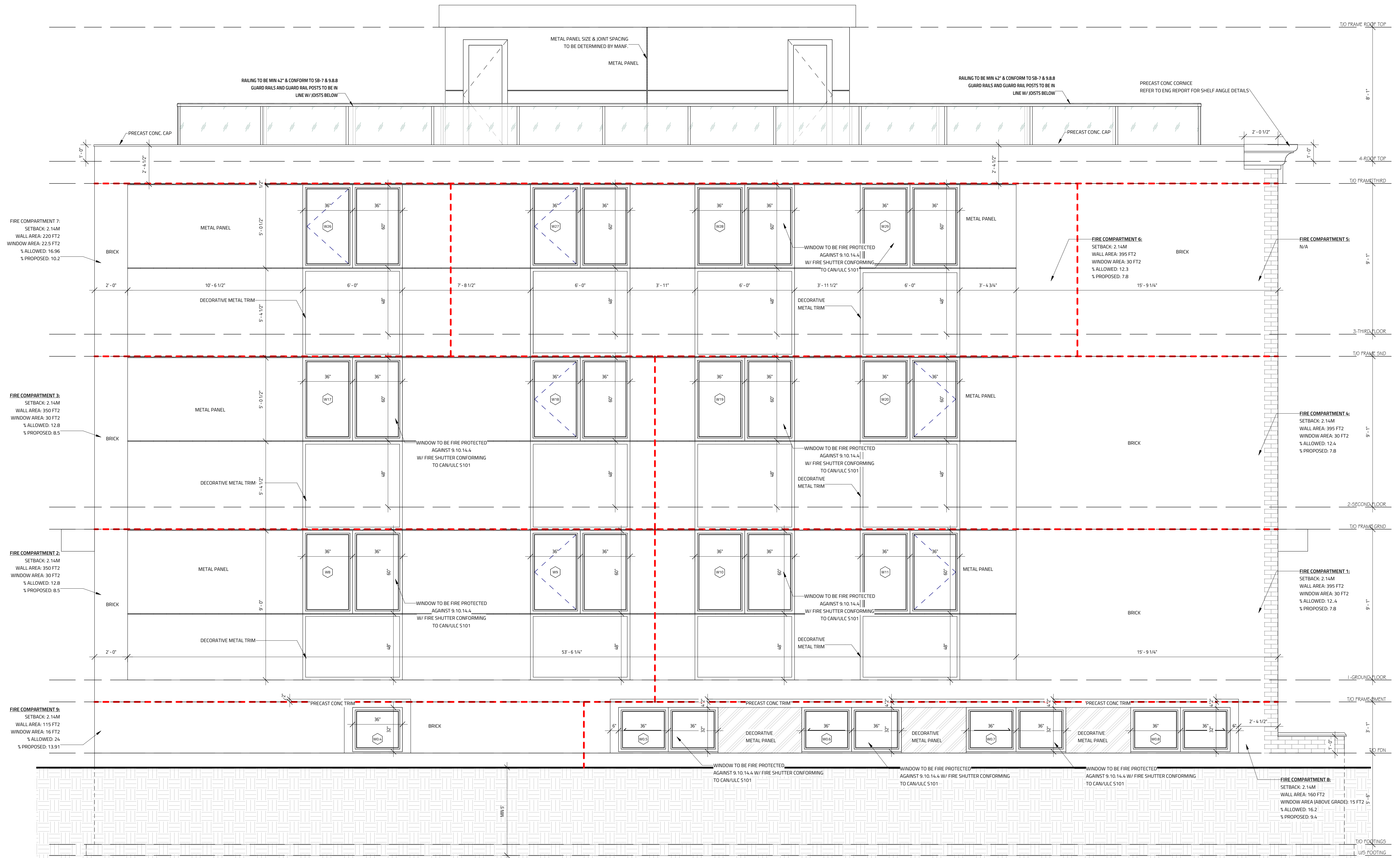
NO.	REVISION	DATE
5	SHOW STORAGE LOCATION REVISION	MAY 11, 2020
4	BUILDING MATERIAL REVISION	MAY 1, 2020
3	ACCESSORY BUILDING REVISION	DEC 16, 2019
2	RE-ISSUED FOR SITE PLAN CONTROL	OCT 18, 2019
1	ISSUED FOR SITE PLAN CONTROL	JULY 20, 2019

**58 FLORENCE**  
GROUND FLOOR: 1990 SQ. FT.  
SECOND FLOOR: 1960 SQ. FT.  
THIRD FLOOR: 1960 SQ. FT.  
ROOF TOP: 220 SQ. FT.  
OTTAWA, ON



DRAWING TITLE	
<b>ELEVATIONS 1</b>	
DATE: OCTOBER 31, 2019	SCALE: 3/8" = 1'-0"
DRAWN BY: JS	FILE NAME: 58FLORENCE
CHECKED BY: JS	DWG. NO. A5.0
PLAN NUMBER: 0002	FILE NUMBER: 001-12-19-0341

MATERIALS USED & CONSTRUCTION PROCEDURE MUST CONFORM TO:  
1. SPECIFICATIONS & NOTES SHOWN ON THIS DRAWING  
2. NOTES & DETAILS SHOWN ON STRUCTURAL DRAWINGS  
3. PROVISIONS IN PART 9 OF O.B.C. 2012



**FIRE COMPARTMENT 7:**  
 SETBACK: 2.14M  
 WALL AREA: 220 FT<sup>2</sup>  
 WINDOW AREA: 22.5 FT<sup>2</sup>  
 % ALLOWED: 16.96  
 % PROPOSED: 10.2

**FIRE COMPARTMENT 3:**  
 SETBACK: 2.14M  
 WALL AREA: 350 FT<sup>2</sup>  
 WINDOW AREA: 30 FT<sup>2</sup>  
 % ALLOWED: 12.8  
 % PROPOSED: 8.5

**FIRE COMPARTMENT 2:**  
 SETBACK: 2.14M  
 WALL AREA: 350 FT<sup>2</sup>  
 WINDOW AREA: 30 FT<sup>2</sup>  
 % ALLOWED: 12.8  
 % PROPOSED: 8.5

**FIRE COMPARTMENT 9:**  
 SETBACK: 2.14M  
 WALL AREA: 115 FT<sup>2</sup>  
 WINDOW AREA: 16 FT<sup>2</sup>  
 % ALLOWED: 24  
 % PROPOSED: 13.91

**FIRE COMPARTMENT 6:**  
 SETBACK: 2.14M  
 WALL AREA: 395 FT<sup>2</sup>  
 WINDOW AREA: 30 FT<sup>2</sup>  
 % ALLOWED: 12.3  
 % PROPOSED: 7.8

**FIRE COMPARTMENT 5:**  
 N/A

**FIRE COMPARTMENT 4:**  
 SETBACK: 2.14M  
 WALL AREA: 395 FT<sup>2</sup>  
 WINDOW AREA: 30 FT<sup>2</sup>  
 % ALLOWED: 12.4  
 % PROPOSED: 7.8

**FIRE COMPARTMENT 1:**  
 SETBACK: 2.14M  
 WALL AREA: 395 FT<sup>2</sup>  
 WINDOW AREA: 30 FT<sup>2</sup>  
 % ALLOWED: 12.4  
 % PROPOSED: 7.8

**FIRE COMPARTMENT 8:**  
 SETBACK: 2.14M  
 WALL AREA: 190 FT<sup>2</sup>  
 WINDOW AREA (ABOVE GRADE): 15 FT<sup>2</sup>  
 % ALLOWED: 16.2  
 % PROPOSED: 9.4

1 LEFT ELEVATION  
 SCALE: 3/8" = 1'-0"

MATERIALS USED & CONSTRUCTION PROCEDURE MUST CONFORM TO:  
 1. SPECIFICATIONS & NOTES SHOWN ON THIS DRAWING  
 2. NOTES & DETAILS SHOWN ON STRUCTURAL DRAWINGS  
 3. PROVISIONS IN PART 9 OF O.B.C. 2012

**APPROVED**  
 By Jenny Kluge at 4:21 pm, Aug 31, 2020

*J Kluge*  
**JENNY KLUGE**  
 PLANNER  
 PLANNING, INFRASTRUCTURE & ECONOMIC  
 DEVELOPMENT DEPARTMENT, CITY OF OTTAWA

I REVIEW & TAKE RESPONSIBILITY FOR THE DESIGN WORK ON BEHALF OF A FIRM REGISTERED UNDER SUBSECTION 3.2.4 OF THE OBC 2012. I AM QUALIFIED & THE FIRM IS REGISTERED IN THE APPROPRIATE CLASSES/CATEGORIES.

THIS DRAWING SHALL NOT BE USED FOR CONSTRUCTION UNTIL SIGNED AND DATED BY THE DESIGNER

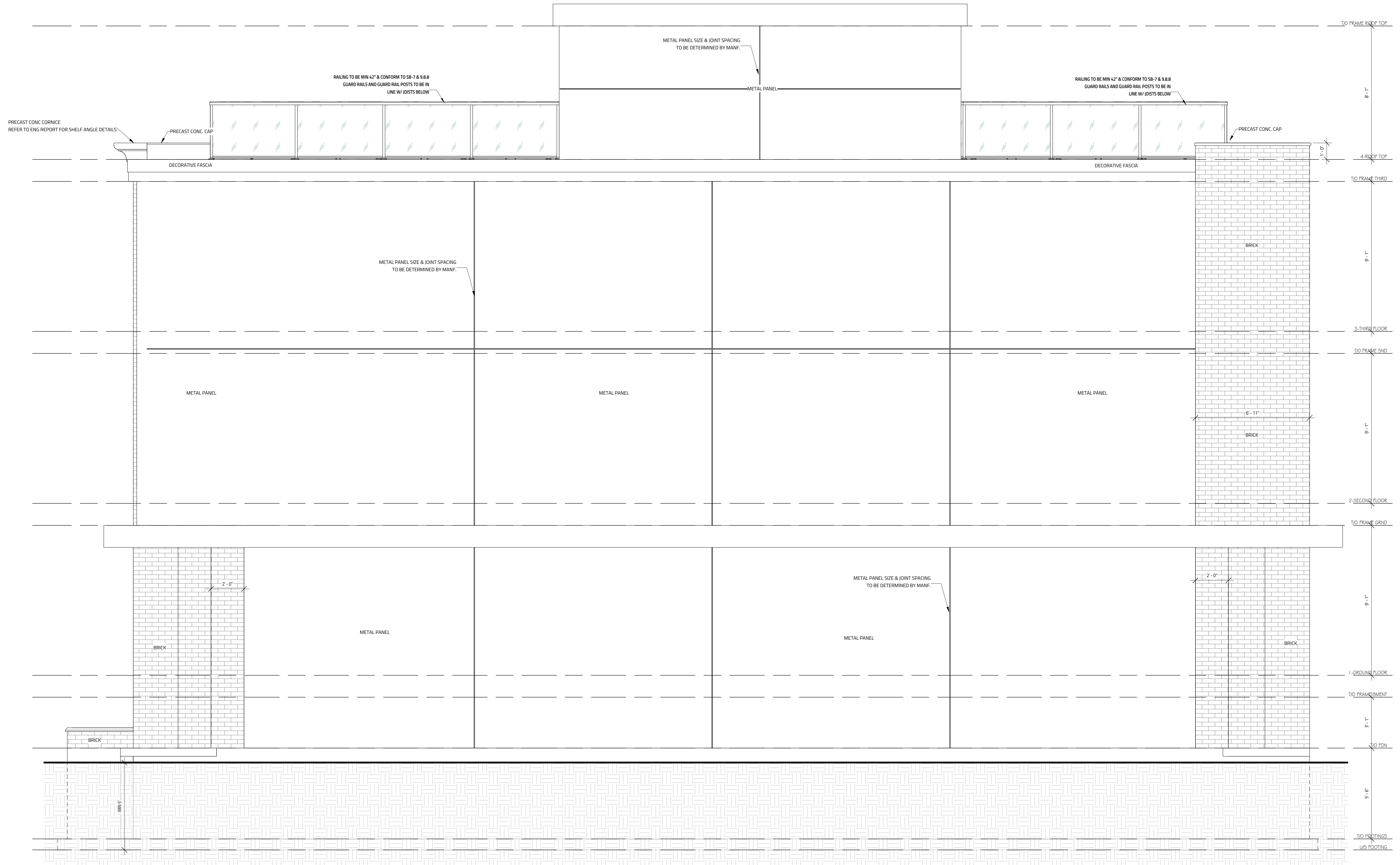
FIRM BCIN: 45801  
 INDIVIDUAL BCIN: 43176  
 MARCH 9, 2020

NO.	REVISION	DATE
5	SNOW STORAGE LOCATION REVISION	MAY 11, 2020
4	WALKWAY MATERIAL REVISION	MAY 11, 2020
3	ACCESSORY BUILDING REVISION	DEC 16, 2019
2	RE-ISSUED FOR SITE PLAN CONTROL	OCT 18, 2019
1	ISSUED FOR SITE PLAN CONTROL	JULY 25, 2019

**58 FLORENCE**  
 GROUND FLOOR: 1990 SQ. FT.  
 SECOND FLOOR: 1960 SQ. FT.  
 THIRD FLOOR: 1960 SQ. FT.  
 ROOF TOP: 220 SQ. FT.  
 OTTAWA, ON

**Evolution**  
 DESIGN & DRAFTING  
 613-808-7185 // 613-884-7068

ELEVATIONS 2	
DATE: OCTOBER 31, 2019	SCALE: 3/8" = 1'-0"
DRAWN BY: [NAME]	FILE NAME: [NAME]
CHECKED BY: [NAME]	DWG. NO. A5.1
PLAN NUMBER: 0002	FILE NUMBER: 001-12-19-0341



1 RIGHT ELEVATION  
SCALE: 3/8" = 1'-0"

ELEVATIONS	
MATERIALS USED & CONSTRUCTION PROCEDURE MUST CONFORM TO:	
1. SPECIFICATIONS & NOTES SHOWN ON THIS DRAWING	
2. NOTES & DETAILS SHOWN ON STRUCTURAL DRAWINGS	
3. PROVISIONS IN PART 9 OF O.B.C. 2012	

STUCCO IS SENERGY SENERFLEX SYSTEM CONFORMING TO CCIMC 13062-R

ALL ROOF OVERHANGS TO BE 1'-6" UNLESS OTHERWISE NOTED

**APPROVED**  
By Jenny Kluge at 4:22 pm, Aug 31, 2020

*J Kluge*

**JENNY KLUKE**  
PLANNER  
PLANNING, INFRASTRUCTURE & ECONOMIC  
DEVELOPMENT DEPARTMENT, CITY OF OTTAWA

I REVIEW & TAKE RESPONSIBILITY FOR THE DESIGN WORK ON BEHALF OF A FIRM REGISTERED UNDER SUBSECTION 3.2.4 OF THE OBC 2012. I AM QUALIFIED & THE FIRM IS REGISTERED IN THE APPROPRIATE CLASSES/CATEGORIES.

THIS DRAWING SHALL NOT BE USED FOR CONSTRUCTION UNTIL SIGNED AND DATED BY THE DESIGNER

FIRM BCIN: 45801  
INDIVIDUAL BCIN: 43476  
MARCH 9, 2020

NO.	REVISION	DATE
5	SNOW STORAGE LOCATION REVISION	MAY 11, 2020
4	WALKWAY MATERIAL REVISION	MAY 1, 2020
3	ACCESSORY BUILDING REVISION	DEC 16, 2019
2	RE-ISSUED FOR SITE PLAN CONTROL	OCT 18, 2019
1	ISSUED FOR SITE PLAN CONTROL	JULY 29, 2019

**58 FLORENCE**

GROUND FLOOR: 1990 SQ. FT.  
SECOND FLOOR: 1960 SQ. FT.  
THIRD FLOOR: 1960 SQ. FT.  
ROOF TOP: 220 SQ. FT.

OTTAWA, ON

**Evolution**  
DESIGN & DRAFTING  
613-808-7185 // 613-884-7068

DRAWING TITLE	
<b>ELEVATIONS 3</b>	
DATE: OCTOBER 31, 2019	SCALE: 3/8" = 1'-0"
DRAWN BY: [REDACTED]	FILE NAME: [REDACTED]
CHECKED BY: [REDACTED]	DWG. NO. <b>A5.2</b>
PLAN NUMBER: 0002, FILE NUMBER: 001-12-19-0341	