



P²
Concepts
739 RIDGEWOOD AVE., UNIT 201
OTTAWA, ONTARIO, K1V 6M8

CLIENT:

No.	REVISIONS	DATE
11		
10		
09		
08		
07	REVISED FROM 1ST ROUND OF COMMENTS	2020-08-31
06	ISSUED FOR REVIEW	2020-07-27
05	ISSUED FOR REVIEW	2020-07-23
04	ISSUED FOR REVIEW	2020-03-23
03	ISSUED FOR REVIEW	2020-03-03
02	ISSUED FOR REVIEW	2019-12-18
01	ISSUED FOR COORDINATION	2019-12-06

NOT AUTHENTIC UNLESS SIGNED AND DATED

CONSULTING ENGINEERS

STRUCTURAL

MECHANICAL

ELECTRICAL

DESIGNED BY: P.E.
DRAWN BY: P.E.
APPROVED BY: P.E.

PROJECT

243-245 HINCHEY AVENUE

DRAWING TITLE

LOWER AND MAIN FLOOR PLANS

PROJECT NO.

0341

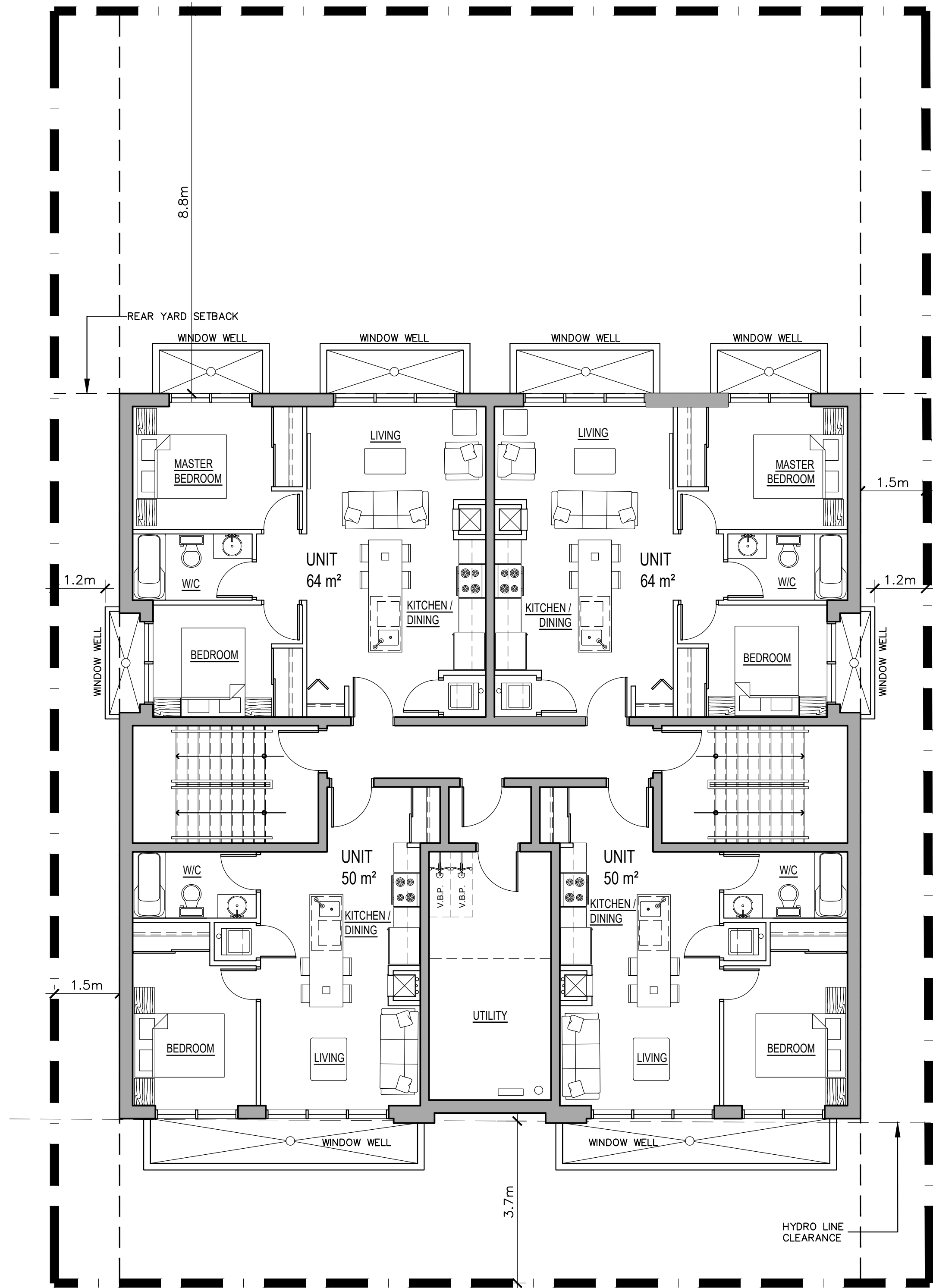
DATE

DEC-06, 2019

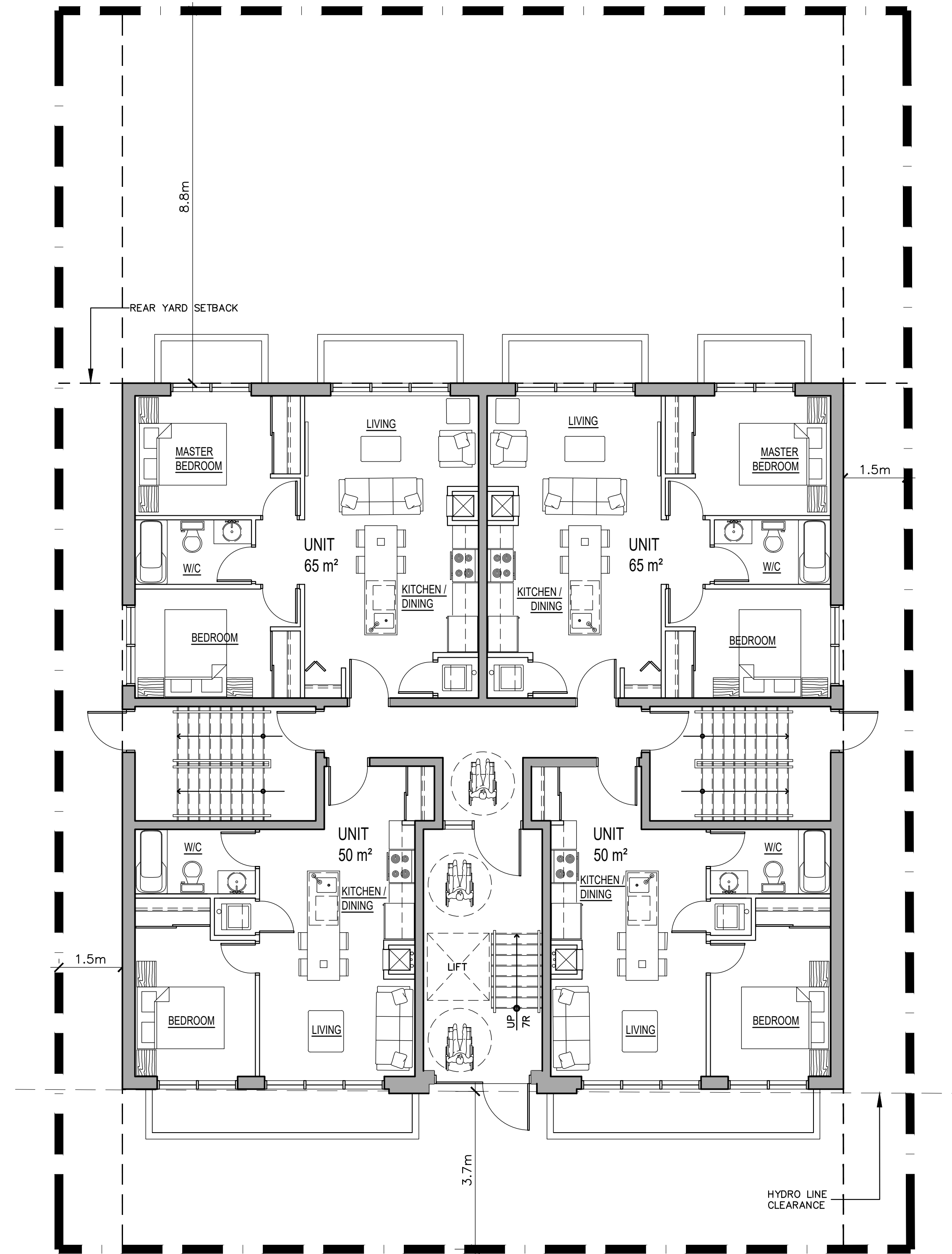
A-100

PLAN #

DX



1 LOWER LEVEL FLOOR PLAN 4 - UNITS
SCALE = 1:75



2 MAIN LEVEL FLOOR PLAN 4 - UNITS
SCALE = 1:75