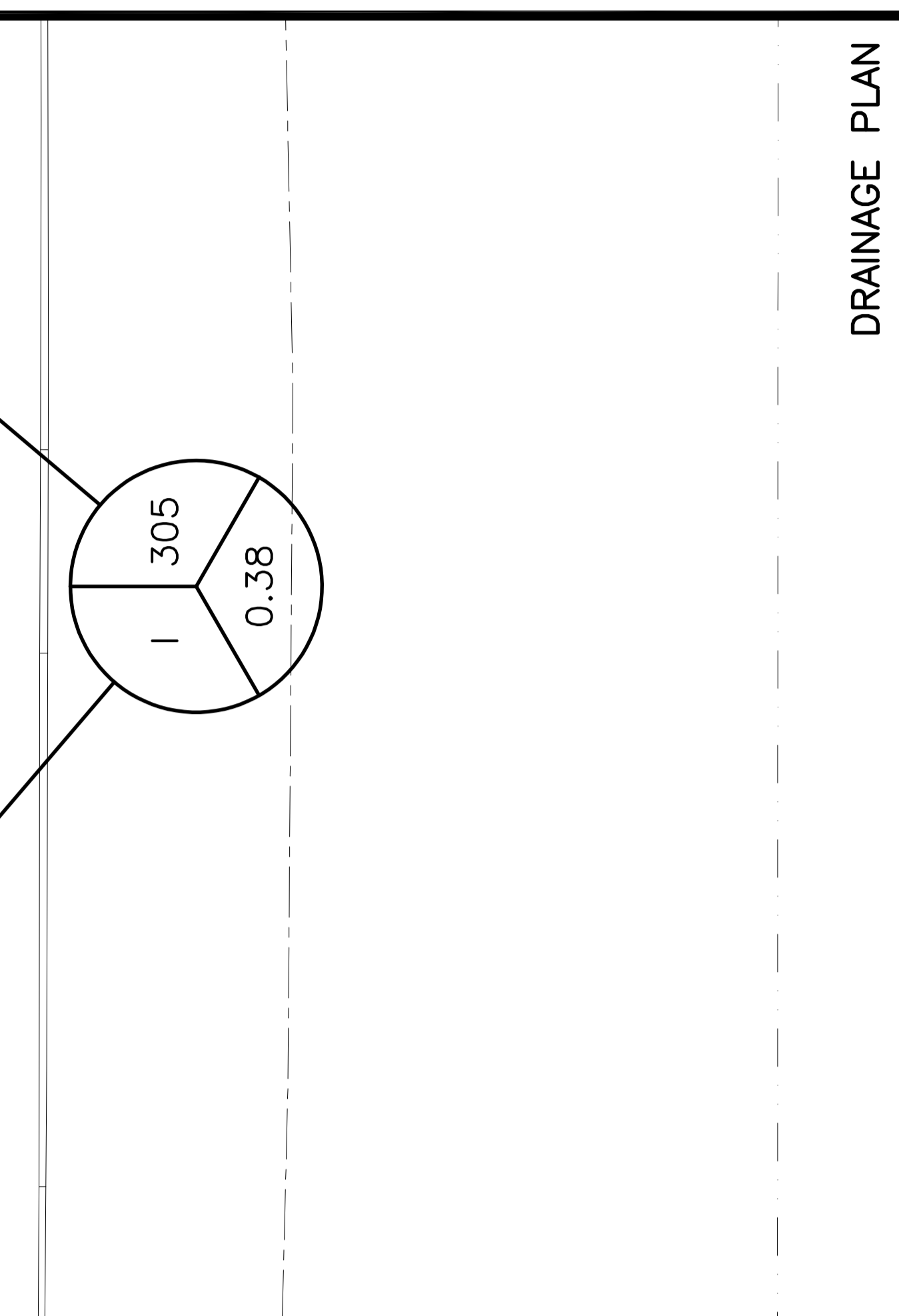
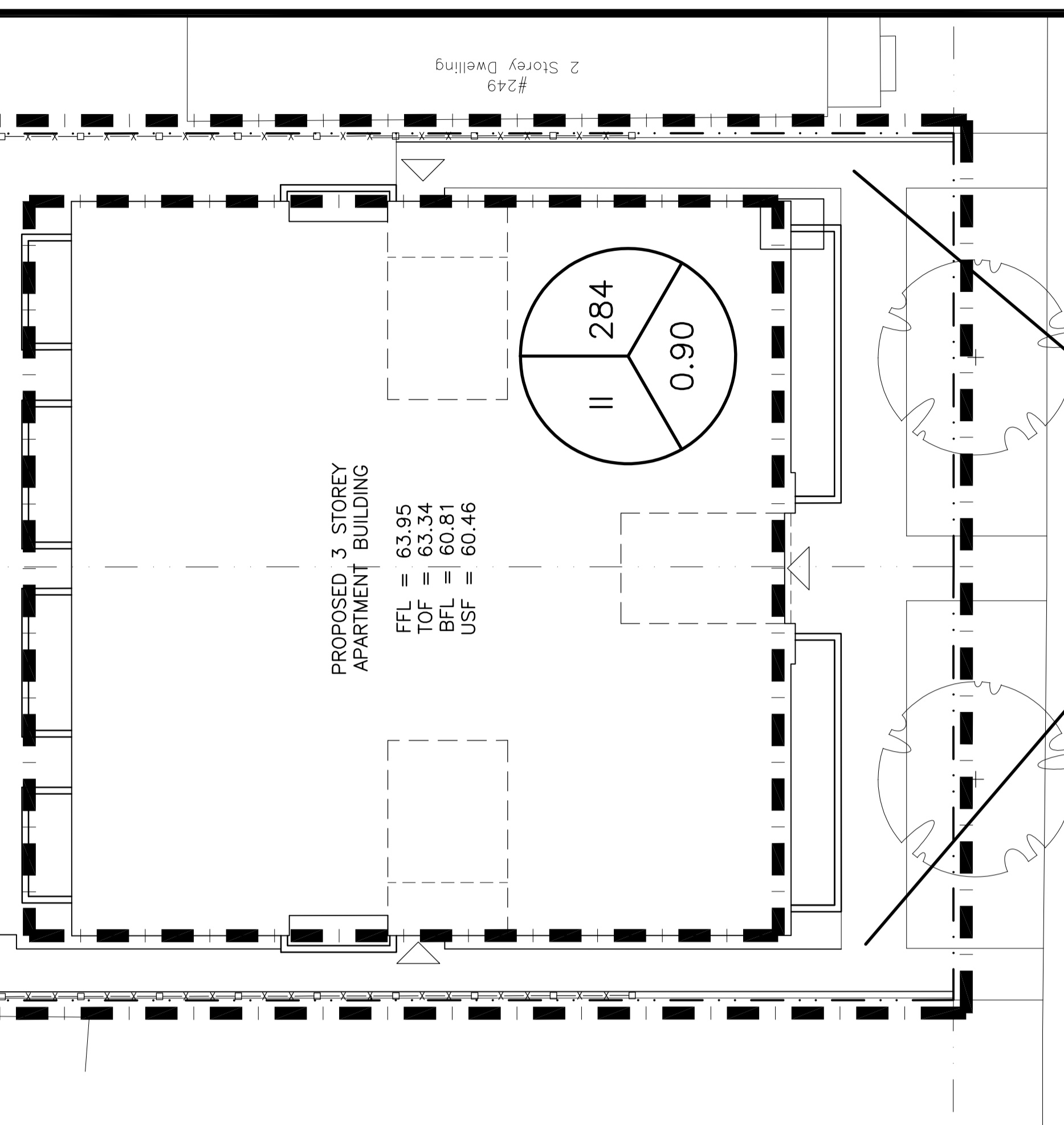
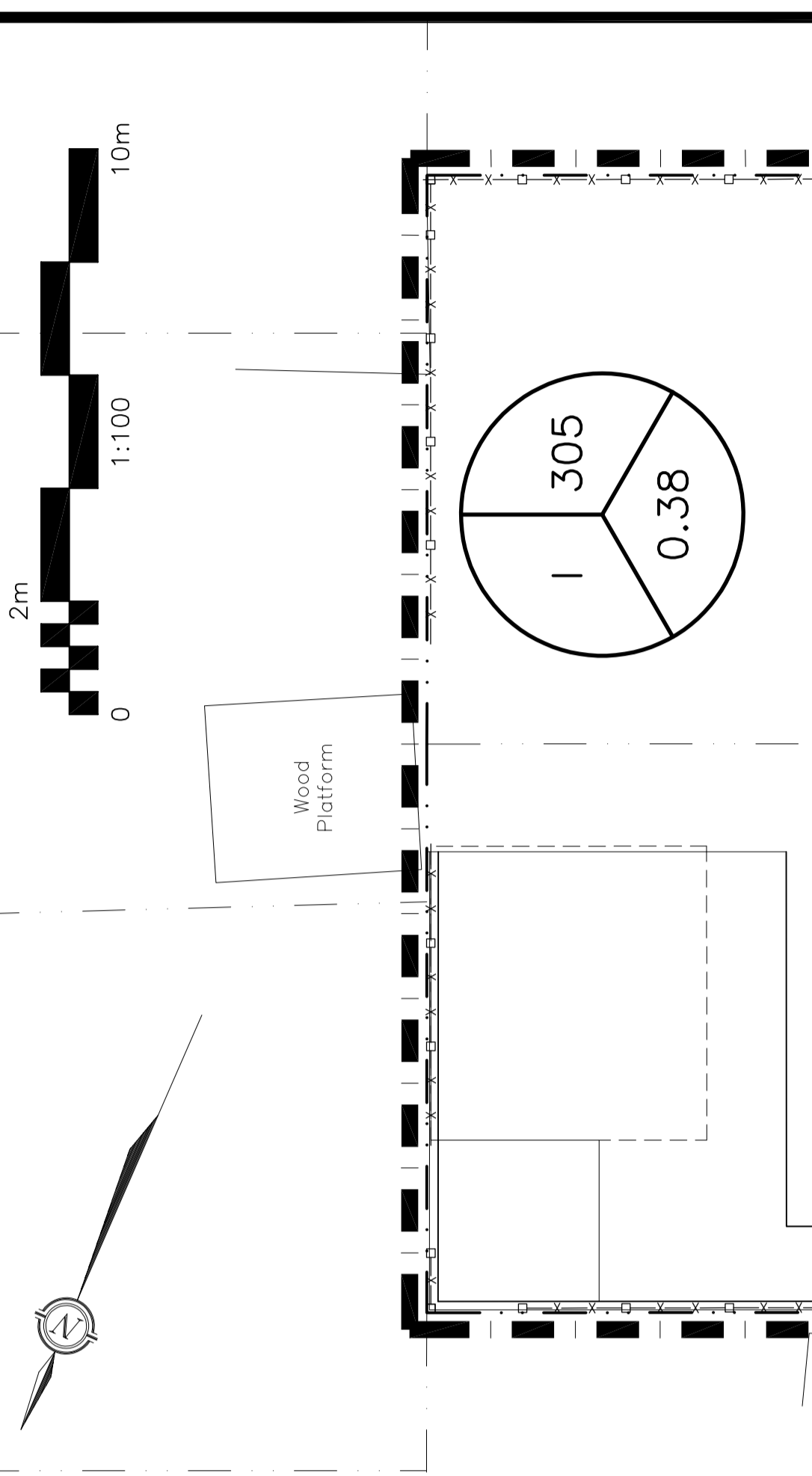
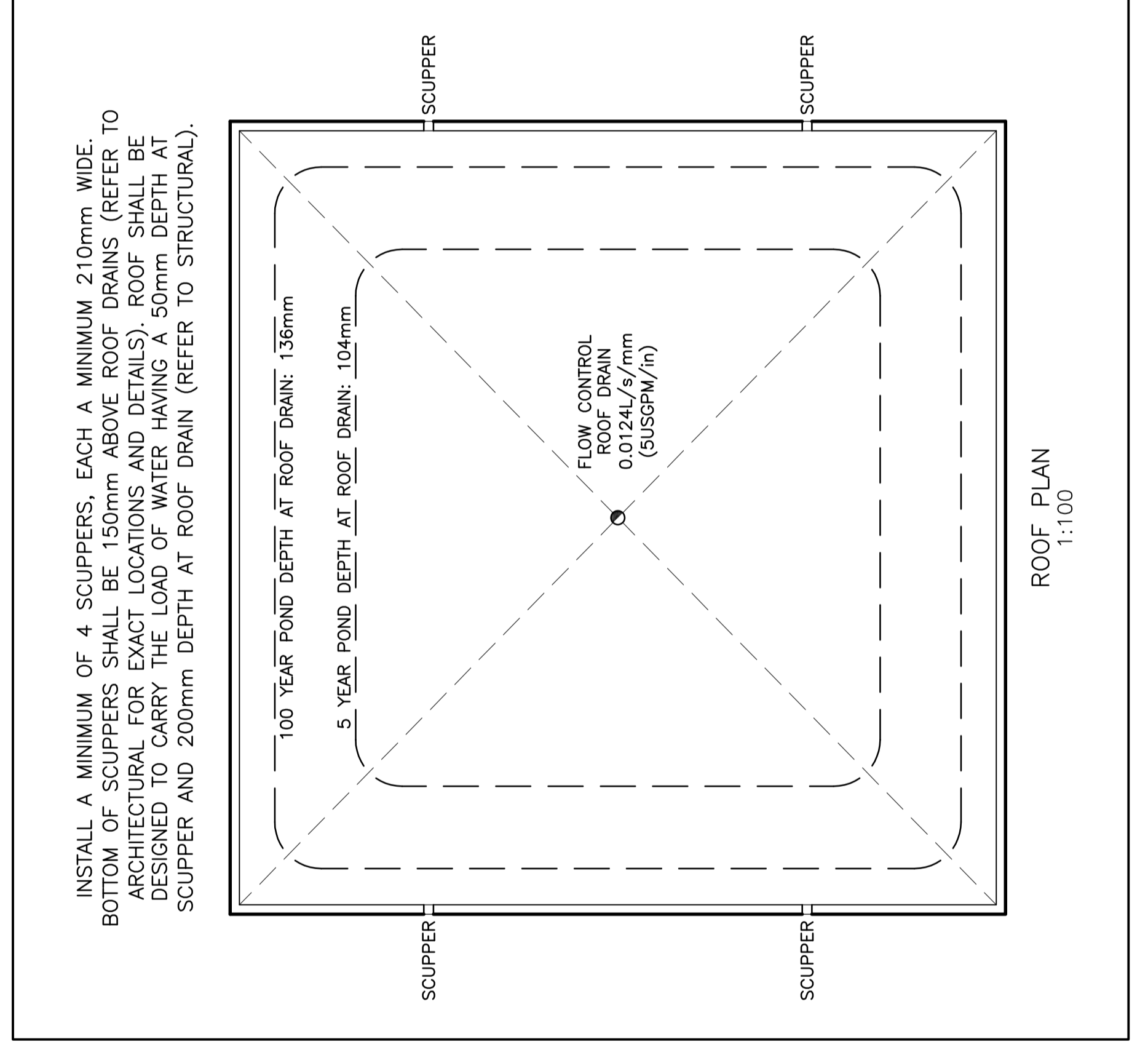
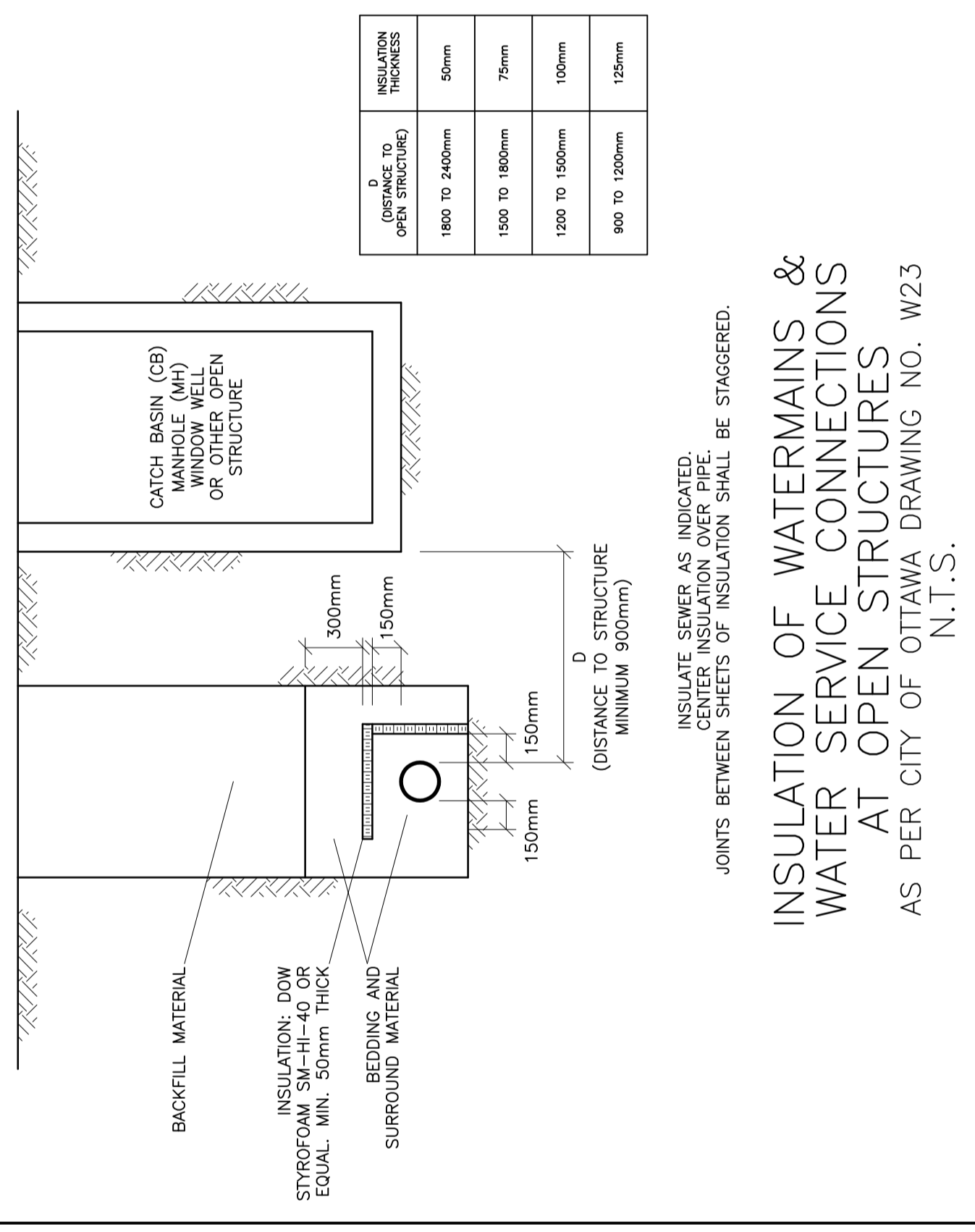
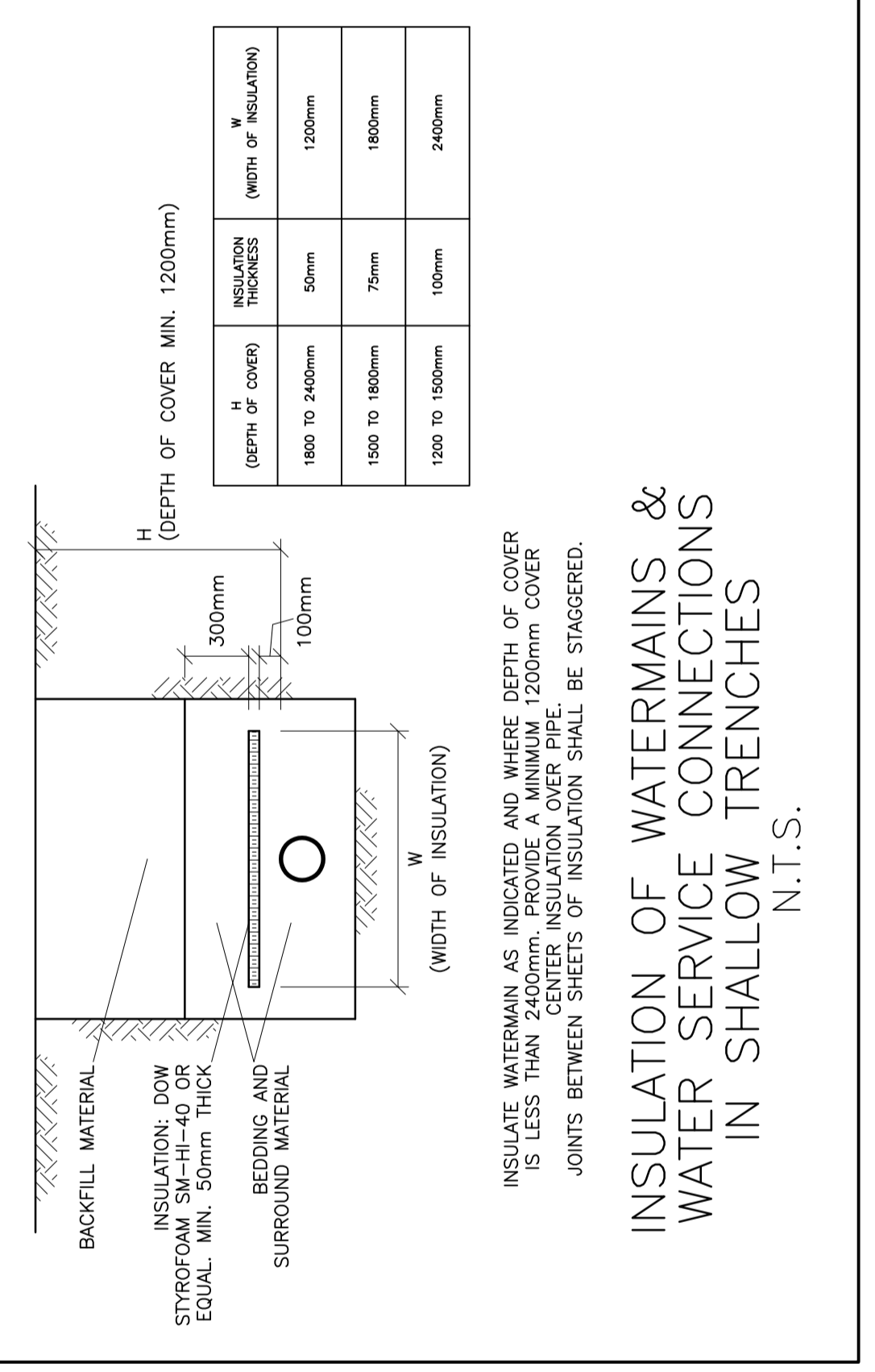


- 1.1. USE BAR SCALE TO CONFIRM ACTUAL PLOT SCALE. EXISTING AND NEW ELEVATIONS ARE GEODETIC AND ARE IN METERS. ALL PIPE DIMENSIONS ARE IN MILLIMETERS.
- 1.2. UNLESS OTHERWISE STATED "ENGINEER" REFERS TO D. B. GRAY ENGINEERING INC. UTILITIES ARE NOT NECESSARILY SHOWN ON PLAN AND THESE SHOWN ARE DERIVED FROM AVAILABLE INFORMATION AND MUST BE CONFIRMED ON SITE BEFORE COMMENCING CONSTRUCTION. REPORT ANY DIFFERENCES TO ENGINEER. UNDERGROUND LOCATIONS (INCLUDING ONTARIO CK CALL 1-800-469-2255) SHALL BE CONDUCTED PRIOR TO THE COMMENCEMENT OF ANY EXCAVATION.
- 1.3. THE SURVEY AND DESIGN SHALL BE CONDUCTED IN ACCORDANCE WITH THE SURVEY ACT AND THE SURVEY REGULATIONS. THE SURVEY SHALL BE THE RESPONSIBILITY OF THE USER OF THE SURVEY PLAN AND THESE DRAWINGS TO VERIFY THAT THE JOB BENCHMARK HAS NOT BEEN ALTERED OR DISTURBED AND THAT ITS RELATIVE ELEVATION AND POSITION IS CORRECT.
- 1.4. REFER TO THE LATEST REVISION AND ALL ADDENDUMS OF THE GEOTECHNICAL INVESTIGATION BY PATRICKSON GROUP INC REPORT #2022-07-01 FOR THE PROVISION OF MATERIALS, MATERIALS AND LANDSCAPE SITE PLANS FOR EXACT LOCATIONS OF BUILDINGS, PAVED AREAS, SIDEWALKS, PLANTERS ETC.
- 1.5. REFER TO THE LATEST REVISION AND ALL ADDENDUMS OF THE GEOTECHNICAL INVESTIGATION BY PATRICKSON GROUP INC REPORT #2022-07-01 FOR THE PROVISION OF MATERIALS, MATERIALS AND LANDSCAPE SITE PLANS FOR EXACT LOCATIONS OF BUILDINGS, PAVED AREAS, SIDEWALKS, PLANTERS ETC.
- 1.6. REFER TO THE LATEST REVISION AND ALL ADDENDUMS OF THE GEOTECHNICAL INVESTIGATION BY PATRICKSON GROUP INC REPORT #2022-07-01 FOR THE PROVISION OF MATERIALS, MATERIALS AND LANDSCAPE SITE PLANS FOR EXACT LOCATIONS OF BUILDINGS, PAVED AREAS, SIDEWALKS, PLANTERS ETC.
- 1.7. REFER TO THE LATEST REVISION AND ALL ADDENDUMS OF THE GEOTECHNICAL INVESTIGATION BY PATRICKSON GROUP INC REPORT #2022-07-01 FOR THE PROVISION OF MATERIALS, MATERIALS AND LANDSCAPE SITE PLANS FOR EXACT LOCATIONS OF BUILDINGS, PAVED AREAS, SIDEWALKS, PLANTERS ETC.
- 1.8. REFER TO THE LATEST REVISION AND ALL ADDENDUMS OF THE GEOTECHNICAL INVESTIGATION BY PATRICKSON GROUP INC REPORT #2022-07-01 FOR THE PROVISION OF MATERIALS, MATERIALS AND LANDSCAPE SITE PLANS FOR EXACT LOCATIONS OF BUILDINGS, PAVED AREAS, SIDEWALKS, PLANTERS ETC.
- 1.9. REFER TO THE LATEST REVISION AND ALL ADDENDUMS OF THE GEOTECHNICAL INVESTIGATION BY PATRICKSON GROUP INC REPORT #2022-07-01 FOR THE PROVISION OF MATERIALS, MATERIALS AND LANDSCAPE SITE PLANS FOR EXACT LOCATIONS OF BUILDINGS, PAVED AREAS, SIDEWALKS, PLANTERS ETC.
- 1.10. ALL RELEVANT WORK SHALL BE DONE IN ACCORDANCE WITH THE ONTARIO PROVINCIAL STANDARDS AND SPECIFICATIONS.
- 1.11. ONTARIO PROVINCIAL STANDARDS AND SPECIFICATIONS WILL APPLY WHERE NO CITY STANDARDS ARE AVAILABLE.

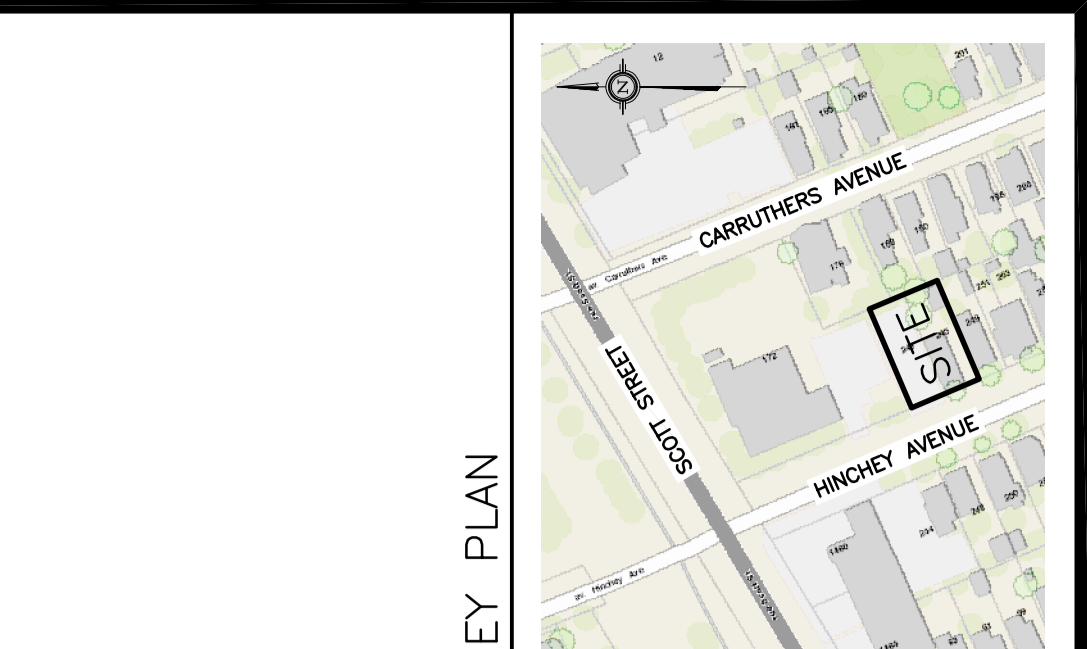
2. EROSION AND SEDIMENT CONTROL PLAN
  - 2.1. THE EROSION AND SEDIMENT CONTROL PLAN IS A "FINAL DOCUMENT" AND SHALL BE REVISED IN THE EVENT THE SPECIFIED CONTROL MEASURES ARE NOT SUFFICIENT TO PREVENT EROSION AND SEDIMENTATION. THE CONTRACTOR SHALL BE RESPONSIBLE FOR MONITORING THE EFFECTIVENESS OF THE CONTROL MEASURES AND FOR REPORTING ANY DEFICIENCIES TO THE ENGINEER.
  - 2.2. PRIOR TO COMMENCEMENT OF CONSTRUCTION AT ALL MUNICIPAL CATCH BASINS ADJACENT TO THE SITE AND AT ALL MANHOLES OR CATCH BASINS THAT WILL RECEIVE DISCHARGE FROM DE-WATERING OPERATIONS AND ALL NEW CATCH BASINS AS THEY ARE INSTALLED, INSTALL SEDIMENT CAPTURE FILTER SOCK INSERTS (THERMATEX GEOTECHNICALS INC. SLS-2500) OR APPROVED EQUIVALENTS. AT NO TIME SHALL THE FILTER SOCKS BE REMOVED OR DISPOSED OF IN A CONTROLLED AREA. DO NOT SWEEP OR HOSE DOWN ANY SEDIMENT CAPTURE SYSTEM.
  - 2.3. CONSTRUCTION IS CONSIDERED COMPLETE WHEN THE FOLLOWING CONDITIONS HAVE BEEN MET:
    - a. ALL HARD SURFACES HAVE BEEN CONSTRUCTED.
    - a. ALL HARD SURFACES HAVE BEEN CONSTRUCTED.
    - a. ALL HARD SURFACES HAVE BEEN CONSTRUCTED.
    - a. ALL HARD SURFACES HAVE BEEN CONSTRUCTED.
    - a. ALL HARD SURFACES HAVE BEEN CONSTRUCTED.
  - 2.4. THERE ARE NO AREAS OF EXPOSED EARTH.
  - 2.5. REVERSE EROSION AND SEDIMENT CONTROL MEASURES WHEN CONSTRUCTION IS COMPLETE.
3. GRADING & DRAINAGE
  - 3.1. NEW GRADES TO MATCH EXISTING AT PROPERTY LINE. NO EXCESS DRAINAGE WILL BE DIRECTED TOWARDS THE ADJACENT PROPERTIES DURING AND AFTER CONSTRUCTION. THERE WILL BE NO GRADING BETWEEN FINISHED SPOT ELEVATIONS SHOWN ON DRAWINGS TO PREVENT FLOODING.
  - 3.2. ALL AREAS SHALL BE GRADED TO ENSURE ADEQUATE DRAINAGE AWAY FROM BUILDINGS TO CATCH BASINS, SWALES, DITCHES AND OTHER APPROVED DISPOSAL AREAS.
  - 3.3. GRADING SHALL BE IN ACCORDANCE WITH THE ONTARIO PROVINCIAL STANDARDS AND SPECIFICATIONS.
4. SITE SERVICES
  - 4.1. EXISTING WATER SERVICE CONNECTIONS TO BE DECOMMISSIONED SHALL BE BLANKED AT CITY WATERMAIN BY CITY FORCES. CONTRACTOR SHALL PROVIDE EXCAVATION, BEDDING AND REINFORCEMENT. EXISTING SEWER SERVICE CONNECTIONS SHALL BE RECOMMENDED AS PER CITY OF OTTAWA STANDARDS S11.4.
  - 4.2. ALL WATER MAINS SHALL BE INSTALLED AS PER CITY OF OTTAWA D.W.G. NO. W31.
  - 4.3. WATER METER SHALL BE INSTALLED AS PER CITY OF OTTAWA D.W.G. NO. W31.
  - 4.4. ALL WATER SERVICE MATERIALS AND CONSTRUCTION METHODS TO CITY OF OTTAWA STANDARDS AND ONTARIO PROVINCIAL STANDARDS SPECIFICATIONS (OPSS & OPSD). WATER SERVICE MATERIALS SHALL BE COMPACTED TO A MINIMUM OF 95% RELATIVE COMPACTION. ALL CONNECTIONS, RESTRAINT HOUSINGS OR OTHER FITTINGS WHERE CHANGES OCCUR IN PIPE MATERIALS OR PER CITY OF OTTAWA D.W.G. NO. 40, 42, 44 & 47.
  - 4.5. WHERE THE EXISTING WATER MAIN IS INSTALLED IN A TRENCH WITH A MINIMUM OF 2.4 m CLEARANCE FROM THE EXISTING WATER MAIN, PLACE INSULATION AROUND WATER SERVICE CONNECTIONS AS PER CITY OF OTTAWA D.W.G. NO. W23.
  - 4.6. WHERE THE EXISTING WATER MAIN IS INSTALLED IN A TRENCH WITH A MINIMUM OF 2.4 m CLEARANCE FROM THE EXISTING WATER MAIN, PLACE INSULATION AROUND WATER SERVICE CONNECTIONS AS PER CITY OF OTTAWA D.W.G. NO. W23.
  - 4.7. WATER SERVICE CONNECTION INSTALLED PARALLEL TO A SEWER SHALL BE LAD WITH A MINIMUM 2.5m BARREL TO BARREL HORIZONTAL SEPARATION FROM SEWERS AND SEWER MANHOLES.
  - 4.8. WHERE THE EXISTING WATER MAIN IS INSTALLED IN A TRENCH WITH A MINIMUM OF 2.4 m CLEARANCE FROM THE EXISTING WATER MAIN, PLACE INSULATION AROUND WATER SERVICE CONNECTIONS AS PER CITY OF OTTAWA D.W.G. NO. W23.
  - 4.9. ALL SEWER MATERIALS AND CONSTRUCTION METHODS TO CITY OF OTTAWA STANDARDS AND ONTARIO PROVINCIAL STANDARDS SPECIFICATIONS (OPSS & OPSD). SEWER MATERIAL SHALL BE PER CITY OF OTTAWA D.W.G. NO. S11.4.
  - 4.10. THE DRAIN SERVING THE FOUNDATION DRAINS SHALL BE INSTALLED WITH A BACKWATER VALVE TO CITY OF OTTAWA STANDARDS AND TO CITY OF OTTAWA D.W.G. NO. S14.
  - 4.11. SEWER SERVICE LATERAL SHALL HAVE A MINIMUM 2.0m OF COVER OR SHALL BE INSULATED.
  - 4.12. INSTALL PROPOSED STORM SEWER SERVICE CONNECTION TO EXISTING MUNICIPAL STORM SEWER AS PER CITY OF OTTAWA D.W.G. NO. S11.1.
  - 4.13. INSTALL PROPOSED STORM SEWER SERVICE CONNECTION TO EXISTING MUNICIPAL STORM SEWER AS PER CITY OF OTTAWA D.W.G. NO. S11.1.
  - 4.14. CONNECT PROPOSED STORM SEWER SERVICE CONNECTION TO EXISTING MUNICIPAL STORM SEWER AS PER CITY OF OTTAWA D.W.G. NO. S11.1.
  - 4.15. ALL SEWER MATERIALS AND CONSTRUCTION METHODS TO CITY OF OTTAWA STANDARDS AND ONTARIO PROVINCIAL STANDARDS SPECIFICATIONS (OPSS & OPSD). SEWER MATERIAL SHALL BE PER CITY OF OTTAWA D.W.G. NO. S11.4.
  - 4.16. ROOF DRAINS SHALL BE FLOW CONTROL. TYPE EACH UNSEALED WITH A PARABOLIC SLOPE. EACH SLOPE SHALL BE 1:100. ROOF DRAINS SHALL BE INSTALLED WITH A MINIMUM 150mm IN DIAMETER. WATER ROOF DRAINS WITH WATTS ACCURATOR ROOF-100-41 OR EQUAL PRIOR TO INSTALLATION. SUBMIT SHOP DRAWING TO ENGINEER FOR APPROVAL. EACH SUPPLIER SHALL BE A MAXIMUM 150mm IN DIAMETER. REFER TO ROOF PLAN DETAIL FOR THE MINIMUM NUMBER AND THE MINIMUM WIDTH OF SCUPPERS. REFER TO ARCHITECT FOR EXACT LOCATION AND DETAILS OF SCUPPERS. THE ROOF STRUCTURE SHALL BE DESIGNED TO CARRY THE LOAD OF WATER HAVING A 50mm DEPTH OF WATER AT THE SCUPPER AND 200mm DEPTH OF WATER AT THE ROOF DRAIN (REFER TO STRUCTURAL ENGINEER).
5. CONSTRUCTION
  - 5.1. PRIOR TO COMMENCING WORK:
    - a. OBTAIN AND PAY FOR ALL NECESSARY PERMITS AND APPROVALS FROM THE AUTHORITIES.
    - a. OBTAIN AND PAY FOR ALL NECESSARY PERMITS AND APPROVALS FROM THE AUTHORITIES.
    - a. OBTAIN AND PAY FOR ALL NECESSARY PERMITS AND APPROVALS FROM THE AUTHORITIES.
    - a. OBTAIN AND PAY FOR ALL NECESSARY PERMITS AND APPROVALS FROM THE AUTHORITIES.
    - a. OBTAIN AND PAY FOR ALL NECESSARY PERMITS AND APPROVALS FROM THE AUTHORITIES.
  - 5.2. EXCAVATION WORK SHALL BE CONDUCTED IN ACCORDANCE WITH THE ONTARIO OCCUPATIONAL HEALTH AND SAFETY ACT AND OTHER APPLICABLE REGULATIONS. PROTECT EXISTING UTILITIES AND MONUMENTS AND OTHER SURFACE FEATURES FROM DAMAGE WHILE WORK IS IN PROGRESS. DO NOT DISTURB SOIL WITHIN BRANCH SPREAD OF TREES OR SHRUBS THAT ARE TO REMAIN.
  - 5.3. EXCAVATION WORK SHALL BE CONDUCTED IN ACCORDANCE WITH THE ONTARIO OCCUPATIONAL HEALTH AND SAFETY ACT AND OTHER APPLICABLE REGULATIONS. PROTECT EXISTING UTILITIES AND MONUMENTS AND OTHER SURFACE FEATURES FROM DAMAGE WHILE WORK IS IN PROGRESS. DO NOT DISTURB SOIL WITHIN BRANCH SPREAD OF TREES OR SHRUBS THAT ARE TO REMAIN.
  - 5.4. EXCAVATION WORK SHALL BE CONDUCTED IN ACCORDANCE WITH THE ONTARIO OCCUPATIONAL HEALTH AND SAFETY ACT AND OTHER APPLICABLE REGULATIONS. PROTECT EXISTING UTILITIES AND MONUMENTS AND OTHER SURFACE FEATURES FROM DAMAGE WHILE WORK IS IN PROGRESS. DO NOT DISTURB SOIL WITHIN BRANCH SPREAD OF TREES OR SHRUBS THAT ARE TO REMAIN.
  - 5.5. EXCAVATION WORK SHALL BE CONDUCTED IN ACCORDANCE WITH THE ONTARIO OCCUPATIONAL HEALTH AND SAFETY ACT AND OTHER APPLICABLE REGULATIONS. PROTECT EXISTING UTILITIES AND MONUMENTS AND OTHER SURFACE FEATURES FROM DAMAGE WHILE WORK IS IN PROGRESS. DO NOT DISTURB SOIL WITHIN BRANCH SPREAD OF TREES OR SHRUBS THAT ARE TO REMAIN.
  - 5.6. EXCAVATION WORK SHALL BE CONDUCTED IN ACCORDANCE WITH THE ONTARIO OCCUPATIONAL HEALTH AND SAFETY ACT AND OTHER APPLICABLE REGULATIONS. PROTECT EXISTING UTILITIES AND MONUMENTS AND OTHER SURFACE FEATURES FROM DAMAGE WHILE WORK IS IN PROGRESS. DO NOT DISTURB SOIL WITHIN BRANCH SPREAD OF TREES OR SHRUBS THAT ARE TO REMAIN.
  - 5.7. EXCAVATION WORK SHALL BE CONDUCTED IN ACCORDANCE WITH THE ONTARIO OCCUPATIONAL HEALTH AND SAFETY ACT AND OTHER APPLICABLE REGULATIONS. PROTECT EXISTING UTILITIES AND MONUMENTS AND OTHER SURFACE FEATURES FROM DAMAGE WHILE WORK IS IN PROGRESS. DO NOT DISTURB SOIL WITHIN BRANCH SPREAD OF TREES OR SHRUBS THAT ARE TO REMAIN.
  - 5.8. EXCAVATION WORK SHALL BE CONDUCTED IN ACCORDANCE WITH THE ONTARIO OCCUPATIONAL HEALTH AND SAFETY ACT AND OTHER APPLICABLE REGULATIONS. PROTECT EXISTING UTILITIES AND MONUMENTS AND OTHER SURFACE FEATURES FROM DAMAGE WHILE WORK IS IN PROGRESS. DO NOT DISTURB SOIL WITHIN BRANCH SPREAD OF TREES OR SHRUBS THAT ARE TO REMAIN.
  - 5.9. EXCAVATION, TRENCHING & BACKFILL:
    - a. EXCAVATION WORK SHALL BE CONDUCTED IN ACCORDANCE WITH THE ONTARIO OCCUPATIONAL HEALTH AND SAFETY ACT AND OTHER APPLICABLE REGULATIONS. PROTECT EXISTING UTILITIES AND MONUMENTS AND OTHER SURFACE FEATURES FROM DAMAGE WHILE WORK IS IN PROGRESS. DO NOT DISTURB SOIL WITHIN BRANCH SPREAD OF TREES OR SHRUBS THAT ARE TO REMAIN.
    - a. EXCAVATION WORK SHALL BE CONDUCTED IN ACCORDANCE WITH THE ONTARIO OCCUPATIONAL HEALTH AND SAFETY ACT AND OTHER APPLICABLE REGULATIONS. PROTECT EXISTING UTILITIES AND MONUMENTS AND OTHER SURFACE FEATURES FROM DAMAGE WHILE WORK IS IN PROGRESS. DO NOT DISTURB SOIL WITHIN BRANCH SPREAD OF TREES OR SHRUBS THAT ARE TO REMAIN.
    - a. EXCAVATION WORK SHALL BE CONDUCTED IN ACCORDANCE WITH THE ONTARIO OCCUPATIONAL HEALTH AND SAFETY ACT AND OTHER APPLICABLE REGULATIONS. PROTECT EXISTING UTILITIES AND MONUMENTS AND OTHER SURFACE FEATURES FROM DAMAGE WHILE WORK IS IN PROGRESS. DO NOT DISTURB SOIL WITHIN BRANCH SPREAD OF TREES OR SHRUBS THAT ARE TO REMAIN.
    - a. EXCAVATION WORK SHALL BE CONDUCTED IN ACCORDANCE WITH THE ONTARIO OCCUPATIONAL HEALTH AND SAFETY ACT AND OTHER APPLICABLE REGULATIONS. PROTECT EXISTING UTILITIES AND MONUMENTS AND OTHER SURFACE FEATURES FROM DAMAGE WHILE WORK IS IN PROGRESS. DO NOT DISTURB SOIL WITHIN BRANCH SPREAD OF TREES OR SHRUBS THAT ARE TO REMAIN.
    - a. EXCAVATION WORK SHALL BE CONDUCTED IN ACCORDANCE WITH THE ONTARIO OCCUPATIONAL HEALTH AND SAFETY ACT AND OTHER APPLICABLE REGULATIONS. PROTECT EXISTING UTILITIES AND MONUMENTS AND OTHER SURFACE FEATURES FROM DAMAGE WHILE WORK IS IN PROGRESS. DO NOT DISTURB SOIL WITHIN BRANCH SPREAD OF TREES OR SHRUBS THAT ARE TO REMAIN.
  - 5.10. EXCAVATION, TRENCHING & BACKFILL:
    - a. EXCAVATION WORK SHALL BE CONDUCTED IN ACCORDANCE WITH THE ONTARIO OCCUPATIONAL HEALTH AND SAFETY ACT AND OTHER APPLICABLE REGULATIONS. PROTECT EXISTING UTILITIES AND MONUMENTS AND OTHER SURFACE FEATURES FROM DAMAGE WHILE WORK IS IN PROGRESS. DO NOT DISTURB SOIL WITHIN BRANCH SPREAD OF TREES OR SHRUBS THAT ARE TO REMAIN.
    - a. EXCAVATION WORK SHALL BE CONDUCTED IN ACCORDANCE WITH THE ONTARIO OCCUPATIONAL HEALTH AND SAFETY ACT AND OTHER APPLICABLE REGULATIONS. PROTECT EXISTING UTILITIES AND MONUMENTS AND OTHER SURFACE FEATURES FROM DAMAGE WHILE WORK IS IN PROGRESS. DO NOT DISTURB SOIL WITHIN BRANCH SPREAD OF TREES OR SHRUBS THAT ARE TO REMAIN.
    - a. EXCAVATION WORK SHALL BE CONDUCTED IN ACCORDANCE WITH THE ONTARIO OCCUPATIONAL HEALTH AND SAFETY ACT AND OTHER APPLICABLE REGULATIONS. PROTECT EXISTING UTILITIES AND MONUMENTS AND OTHER SURFACE FEATURES FROM DAMAGE WHILE WORK IS IN PROGRESS. DO NOT DISTURB SOIL WITHIN BRANCH SPREAD OF TREES OR SHRUBS THAT ARE TO REMAIN.
    - a. EXCAVATION WORK SHALL BE CONDUCTED IN ACCORDANCE WITH THE ONTARIO OCCUPATIONAL HEALTH AND SAFETY ACT AND OTHER APPLICABLE REGULATIONS. PROTECT EXISTING UTILITIES AND MONUMENTS AND OTHER SURFACE FEATURES FROM DAMAGE WHILE WORK IS IN PROGRESS. DO NOT DISTURB SOIL WITHIN BRANCH SPREAD OF TREES OR SHRUBS THAT ARE TO REMAIN.
    - a. EXCAVATION WORK SHALL BE CONDUCTED IN ACCORDANCE WITH THE ONTARIO OCCUPATIONAL HEALTH AND SAFETY ACT AND OTHER APPLICABLE REGULATIONS. PROTECT EXISTING UTILITIES AND MONUMENTS AND OTHER SURFACE FEATURES FROM DAMAGE WHILE WORK IS IN PROGRESS. DO NOT DISTURB SOIL WITHIN BRANCH SPREAD OF TREES OR SHRUBS THAT ARE TO REMAIN.
  - 5.11. EXCAVATION, TRENCHING & BACKFILL:
    - a. EXCAVATION WORK SHALL BE CONDUCTED IN ACCORDANCE WITH THE ONTARIO OCCUPATIONAL HEALTH AND SAFETY ACT AND OTHER APPLICABLE REGULATIONS. PROTECT EXISTING UTILITIES AND MONUMENTS AND OTHER SURFACE FEATURES FROM DAMAGE WHILE WORK IS IN PROGRESS. DO NOT DISTURB SOIL WITHIN BRANCH SPREAD OF TREES OR SHRUBS THAT ARE TO REMAIN.
    - a. EXCAVATION WORK SHALL BE CONDUCTED IN ACCORDANCE WITH THE ONTARIO OCCUPATIONAL HEALTH AND SAFETY ACT AND OTHER APPLICABLE REGULATIONS. PROTECT EXISTING UTILITIES AND MONUMENTS AND OTHER SURFACE FEATURES FROM DAMAGE WHILE WORK IS IN PROGRESS. DO NOT DISTURB SOIL WITHIN BRANCH SPREAD OF TREES OR SHRUBS THAT ARE TO REMAIN.
    - a. EXCAVATION WORK SHALL BE CONDUCTED IN ACCORDANCE WITH THE ONTARIO OCCUPATIONAL HEALTH AND SAFETY ACT AND OTHER APPLICABLE REGULATIONS. PROTECT EXISTING UTILITIES AND MONUMENTS AND OTHER SURFACE FEATURES FROM DAMAGE WHILE WORK IS IN PROGRESS. DO NOT DISTURB SOIL WITHIN BRANCH SPREAD OF TREES OR SHRUBS THAT ARE TO REMAIN.
    - a. EXCAVATION WORK SHALL BE CONDUCTED IN ACCORDANCE WITH THE ONTARIO OCCUPATIONAL HEALTH AND SAFETY ACT AND OTHER APPLICABLE REGULATIONS. PROTECT EXISTING UTILITIES AND MONUMENTS AND OTHER SURFACE FEATURES FROM DAMAGE WHILE WORK IS IN PROGRESS. DO NOT DISTURB SOIL WITHIN BRANCH SPREAD OF TREES OR SHRUBS THAT ARE TO REMAIN.
    - a. EXCAVATION WORK SHALL BE CONDUCTED IN ACCORDANCE WITH THE ONTARIO OCCUPATIONAL HEALTH AND SAFETY ACT AND OTHER APPLICABLE REGULATIONS. PROTECT EXISTING UTILITIES AND MONUMENTS AND OTHER SURFACE FEATURES FROM DAMAGE WHILE WORK IS IN PROGRESS. DO NOT DISTURB SOIL WITHIN BRANCH SPREAD OF TREES OR SHRUBS THAT ARE TO REMAIN.
  - 5.12. EXCAVATION, TRENCHING & BACKFILL:
    - a. EXCAVATION WORK SHALL BE CONDUCTED IN ACCORDANCE WITH THE ONTARIO OCCUPATIONAL HEALTH AND SAFETY ACT AND OTHER APPLICABLE REGULATIONS. PROTECT EXISTING UTILITIES AND MONUMENTS AND OTHER SURFACE FEATURES FROM DAMAGE WHILE WORK IS IN PROGRESS. DO NOT DISTURB SOIL WITHIN BRANCH SPREAD OF TREES OR SHRUBS THAT ARE TO REMAIN.
    - a. EXCAVATION WORK SHALL BE CONDUCTED IN ACCORDANCE WITH THE ONTARIO OCCUPATIONAL HEALTH AND SAFETY ACT AND OTHER APPLICABLE REGULATIONS. PROTECT EXISTING UTILITIES AND MONUMENTS AND OTHER SURFACE FEATURES FROM DAMAGE WHILE WORK IS IN PROGRESS. DO NOT DISTURB SOIL WITHIN BRANCH SPREAD OF TREES OR SHRUBS THAT ARE TO REMAIN.
    - a. EXCAVATION WORK SHALL BE CONDUCTED IN ACCORDANCE WITH THE ONTARIO OCCUPATIONAL HEALTH AND SAFETY ACT AND OTHER APPLICABLE REGULATIONS. PROTECT EXISTING UTILITIES AND MONUMENTS AND OTHER SURFACE FEATURES FROM DAMAGE WHILE WORK IS IN PROGRESS. DO NOT DISTURB SOIL WITHIN BRANCH SPREAD OF TREES OR SHRUBS THAT ARE TO REMAIN.
    - a. EXCAVATION WORK SHALL BE CONDUCTED IN ACCORDANCE WITH THE ONTARIO OCCUPATIONAL HEALTH AND SAFETY ACT AND OTHER APPLICABLE REGULATIONS. PROTECT EXISTING UTILITIES AND MONUMENTS AND OTHER SURFACE FEATURES FROM DAMAGE WHILE WORK IS IN PROGRESS. DO NOT DISTURB SOIL WITHIN BRANCH SPREAD OF TREES OR SHRUBS THAT ARE TO REMAIN.
    - a. EXCAVATION WORK SHALL BE CONDUCTED IN ACCORDANCE WITH THE ONTARIO OCCUPATIONAL HEALTH AND SAFETY ACT AND OTHER APPLICABLE REGULATIONS. PROTECT EXISTING UTILITIES AND MONUMENTS AND OTHER SURFACE FEATURES FROM DAMAGE WHILE WORK IS IN PROGRESS. DO NOT DISTURB SOIL WITHIN BRANCH SPREAD OF TREES OR SHRUBS THAT ARE TO REMAIN.
  - 5.13. EXCAVATION, TRENCHING & BACKFILL:
    - a. EXCAVATION WORK SHALL BE CONDUCTED IN ACCORDANCE WITH THE ONTARIO OCCUPATIONAL HEALTH AND SAFETY ACT AND OTHER APPLICABLE REGULATIONS. PROTECT EXISTING UTILITIES AND MONUMENTS AND OTHER SURFACE FEATURES FROM DAMAGE WHILE WORK IS IN PROGRESS. DO NOT DISTURB SOIL WITHIN BRANCH SPREAD OF TREES OR SHRUBS THAT ARE TO REMAIN.
    - a. EXCAVATION WORK SHALL BE CONDUCTED IN ACCORDANCE WITH THE ONTARIO OCCUPATIONAL HEALTH AND SAFETY ACT AND OTHER APPLICABLE REGULATIONS. PROTECT EXISTING UTILITIES AND MONUMENTS AND OTHER SURFACE FEATURES FROM DAMAGE WHILE WORK IS IN PROGRESS. DO NOT DISTURB SOIL WITHIN BRANCH SPREAD OF TREES OR SHRUBS THAT ARE TO REMAIN.
    - a. EXCAVATION WORK SHALL BE CONDUCTED IN ACCORDANCE WITH THE ONTARIO OCCUPATIONAL HEALTH AND SAFETY ACT AND OTHER APPLICABLE REGULATIONS. PROTECT EXISTING UTILITIES AND MONUMENTS AND OTHER SURFACE FEATURES FROM DAMAGE WHILE WORK IS IN PROGRESS. DO NOT DISTURB SOIL WITHIN BRANCH SPREAD OF TREES OR SHRUBS THAT ARE TO REMAIN.
    - a. EXCAVATION WORK SHALL BE CONDUCTED IN ACCORDANCE WITH THE ONTARIO OCCUPATIONAL HEALTH AND SAFETY ACT AND OTHER APPLICABLE REGULATIONS. PROTECT EXISTING UTILITIES AND MONUMENTS AND OTHER SURFACE FEATURES FROM DAMAGE WHILE WORK IS IN PROGRESS. DO NOT DISTURB SOIL WITHIN BRANCH SPREAD OF TREES OR SHRUBS THAT ARE TO REMAIN.
    - a. EXCAVATION WORK SHALL BE CONDUCTED IN ACCORDANCE WITH THE ONTARIO OCCUPATIONAL HEALTH AND SAFETY ACT AND OTHER APPLICABLE REGULATIONS. PROTECT EXISTING UTILITIES AND MONUMENTS AND OTHER SURFACE FEATURES FROM DAMAGE WHILE WORK IS IN PROGRESS. DO NOT DISTURB SOIL WITHIN BRANCH SPREAD OF TREES OR SHRUBS THAT ARE TO REMAIN.
  - 5.14. EXCAVATION, TRENCHING & BACKFILL:
    - a. EXCAVATION WORK SHALL BE CONDUCTED IN ACCORDANCE WITH THE ONTARIO OCCUPATIONAL HEALTH AND SAFETY ACT AND OTHER APPLICABLE REGULATIONS. PROTECT EXISTING UTILITIES AND MONUMENTS AND OTHER SURFACE FEATURES FROM DAMAGE WHILE WORK IS IN PROGRESS. DO NOT DISTURB SOIL WITHIN BRANCH SPREAD OF TREES OR SHRUBS THAT ARE TO REMAIN.
    - a. EXCAVATION WORK SHALL BE CONDUCTED IN ACCORDANCE WITH THE ONTARIO OCCUPATIONAL HEALTH AND SAFETY ACT AND OTHER APPLICABLE REGULATIONS. PROTECT EXISTING UTILITIES AND MONUMENTS AND OTHER SURFACE FEATURES FROM DAMAGE WHILE WORK IS IN PROGRESS. DO NOT DISTURB SOIL WITHIN BRANCH SPREAD OF TREES OR SHRUBS THAT ARE TO REMAIN.
    - a. EXCAVATION WORK SHALL BE CONDUCTED IN ACCORDANCE WITH THE ONTARIO OCCUPATIONAL HEALTH AND SAFETY ACT AND OTHER APPLICABLE REGULATIONS. PROTECT EXISTING UTILITIES AND MONUMENTS AND OTHER SURFACE FEATURES FROM DAMAGE WHILE WORK IS IN PROGRESS. DO NOT DISTURB SOIL WITHIN BRANCH SPREAD OF TREES OR SHRUBS THAT ARE TO REMAIN.
    - a. EXCAVATION WORK SHALL BE CONDUCTED IN ACCORDANCE WITH THE ONTARIO OCCUPATIONAL HEALTH AND SAFETY ACT AND OTHER APPLICABLE REGULATIONS. PROTECT EXISTING UTILITIES AND MONUMENTS AND OTHER SURFACE FEATURES FROM DAMAGE WHILE WORK IS IN PROGRESS. DO NOT DISTURB SOIL WITHIN BRANCH SPREAD OF TREES OR SHRUBS THAT ARE TO REMAIN.
    - a. EXCAVATION WORK SHALL BE CONDUCTED IN ACCORDANCE WITH THE ONTARIO OCCUPATIONAL HEALTH AND SAFETY ACT AND OTHER APPLICABLE REGULATIONS. PROTECT EXISTING UTILITIES AND MONUMENTS AND OTHER SURFACE FEATURES FROM DAMAGE WHILE WORK IS IN PROGRESS. DO NOT DISTURB SOIL WITHIN BRANCH SPREAD OF TREES OR SHRUBS THAT ARE TO REMAIN.
  - 5.15. EXCAVATION, TRENCHING & BACKFILL:
    - a. EXCAVATION WORK SHALL BE CONDUCTED IN ACCORDANCE WITH THE ONTARIO OCCUPATIONAL HEALTH AND SAFETY ACT AND OTHER APPLICABLE REGULATIONS. PROTECT EXISTING UTILITIES AND MONUMENTS AND OTHER SURFACE FEATURES FROM DAMAGE WHILE WORK IS IN PROGRESS. DO NOT DISTURB SOIL WITHIN BRANCH SPREAD OF TREES OR SHRUBS THAT ARE TO REMAIN.
    - a. EXCAVATION WORK SHALL BE CONDUCTED IN ACCORDANCE WITH THE ONTARIO OCCUPATIONAL HEALTH AND SAFETY ACT AND OTHER APPLICABLE REGULATIONS. PROTECT EXISTING UTILITIES AND MONUMENTS AND OTHER SURFACE FEATURES FROM DAMAGE WHILE WORK IS IN PROGRESS. DO NOT DISTURB SOIL WITHIN BRANCH SPREAD OF TREES OR SHRUBS THAT ARE TO REMAIN.
    - a. EXCAVATION WORK SHALL BE CONDUCTED IN ACCORDANCE WITH THE ONTARIO OCCUPATIONAL HEALTH AND SAFETY ACT AND OTHER APPLICABLE REGULATIONS. PROTECT EXISTING UTILITIES AND MONUMENTS AND OTHER SURFACE FEATURES FROM DAMAGE WHILE WORK IS IN PROGRESS. DO NOT DISTURB SOIL WITHIN BRANCH SPREAD OF TREES OR SHRUBS THAT ARE TO REMAIN.
    - a. EXCAVATION WORK SHALL BE CONDUCTED IN ACCORDANCE WITH THE ONTARIO OCCUPATIONAL HEALTH AND SAFETY ACT AND OTHER APPLICABLE REGULATIONS. PROTECT EXISTING UTILITIES AND MONUMENTS AND OTHER SURFACE FEATURES FROM DAMAGE WHILE WORK IS IN PROGRESS. DO NOT DISTURB SOIL WITHIN BRANCH SPREAD OF TREES OR SHRUBS THAT ARE TO REMAIN.
    - a. EXCAVATION WORK SHALL BE CONDUCTED IN ACCORDANCE WITH THE ONTARIO OCCUPATIONAL HEALTH AND SAFETY ACT AND OTHER APPLICABLE REGULATIONS. PROTECT EXISTING UTILITIES AND MONUMENTS AND OTHER SURFACE FEATURES FROM DAMAGE WHILE WORK IS IN PROGRESS. DO NOT DISTURB SOIL WITHIN BRANCH SPREAD OF TREES OR SHRUBS THAT ARE TO REMAIN.
  - 5.16. EXCAVATION, TRENCHING & BACKFILL:
    - a. EXCAVATION WORK SHALL BE CONDUCTED IN ACCORDANCE WITH THE ONTARIO OCCUPATIONAL HEALTH AND SAFETY ACT AND OTHER APPLICABLE REGULATIONS. PROTECT EXISTING UTILITIES AND MONUMENTS AND OTHER SURFACE FEATURES FROM DAMAGE WHILE WORK IS IN PROGRESS. DO NOT DISTURB SOIL WITHIN BRANCH SPREAD OF TREES OR SHRUBS THAT ARE TO REMAIN.
    - a. EXCAVATION WORK SHALL BE CONDUCTED IN ACCORDANCE WITH THE ONTARIO OCCUPATIONAL HEALTH AND SAFETY ACT AND OTHER APPLICABLE REGULATIONS. PROTECT EXISTING UTILITIES AND MONUMENTS AND OTHER SURFACE FEATURES FROM DAMAGE WHILE WORK IS IN PROGRESS. DO NOT DISTURB SOIL WITHIN BRANCH SPREAD OF TREES OR SHRUBS THAT ARE TO REMAIN.
    - a. EXCAVATION WORK SHALL BE CONDUCTED IN ACCORDANCE WITH THE ONTARIO OCCUPATIONAL HEALTH AND SAFETY ACT AND OTHER APPLICABLE REGULATIONS. PROTECT EXISTING UTILITIES AND MONUMENTS AND OTHER SURFACE FEATURES FROM DAMAGE WHILE WORK IS IN PROGRESS. DO NOT DISTURB SOIL WITHIN BRANCH SPREAD OF TREES OR SHRUBS THAT ARE TO REMAIN.
    - a. EXCAVATION WORK SHALL BE CONDUCTED IN ACCORDANCE WITH THE ONTARIO OCCUPATIONAL HEALTH AND SAFETY ACT AND OTHER APPLICABLE REGULATIONS. PROTECT EXISTING UTILITIES AND MONUMENTS AND OTHER SURFACE FEATURES FROM DAMAGE WHILE WORK IS IN PROGRESS. DO NOT DISTURB SOIL WITHIN BRANCH SPREAD OF TREES OR SHRUBS THAT ARE TO REMAIN.
    - a. EXCAVATION WORK SHALL BE CONDUCTED IN ACCORDANCE WITH THE ONTARIO OCCUPATIONAL HEALTH AND SAFETY ACT AND OTHER APPLICABLE REGULATIONS. PROTECT EXISTING UTILITIES AND MONUMENTS AND OTHER SURFACE FEATURES FROM DAMAGE WHILE WORK IS IN PROGRESS. DO NOT DISTURB SOIL WITHIN BRANCH SPREAD OF TREES OR SHRUBS THAT ARE TO REMAIN.



LEGEND

DRAINAGE AREA (sq.m)

5 YEAR RUNOFF COEFFICIENT



No.	DATE	REVISION
3	AUG 13-20	RE-ISSUED FOR APPROVAL
2	MAY 5-20	ISSUED FOR APPROVAL
1	MAR 20-20	ISSUED FOR COORDINATION

D. B. GRAY ENGINEERING INC.

700 Long Point Circle  
Ottawa, Ontario

4gray@dbgrayengineering.com  
613-425-8044

Project

PROPOSED 3 STOREY APARTMENT BUILDING  
243-245 HINCHEY AVE  
OTTAWA, ONTARIO

Drawing Title

DRAINAGE PLAN, NOTES & DETAILS

Engineer's Seal

D.B. GRAY  
17016502  
REG. 13290  
PROV. OF ONTARIO

Drawn: D.B.G.  
Hor. Scale 1:100  
Vert. Scale  
Date Feb 20-20  
Job No. 20020

Drawings No. C-3 of 3  
NOT VALID UNLESS SIGNED & DATED

DRAINAGE PLAN