



O' KEEFE COURT



Stantec Consulting Ltd.
400 - 1331 Clyde Avenue
Ottawa ON
Tel. 613.722.4420
www.stantec.com

Copyright Reserved

The Contractor shall verify and be responsible for all dimensions. DO NOT scale the drawing - any errors or omissions shall be reported to Stantec without delay. The Copyrights to all designs and drawings are the property of Stantec. Reproduction or use for any purpose other than that authorized by Stantec is forbidden.

Legend

- SANITARY DRAINAGE AREA ID#
- COMMERCIAL FLOW RATES USED (50,000 L/Ha/d BUILDING FLOW, AND 0.28 L/s/Ha INFILTRATION)
- SANITARY DRAINAGE AREA ha.
- SANITARY DRAINAGE AREA
- PROPOSED SANITARY SEWER

Notes

Revision	By	Appd.	YY.MM.DD
1	WAJ	TKR	20.06.24

File Name: 160401505-08 Dwn. Chkd. Dgn. YY.MM.DD

Permit-Seal



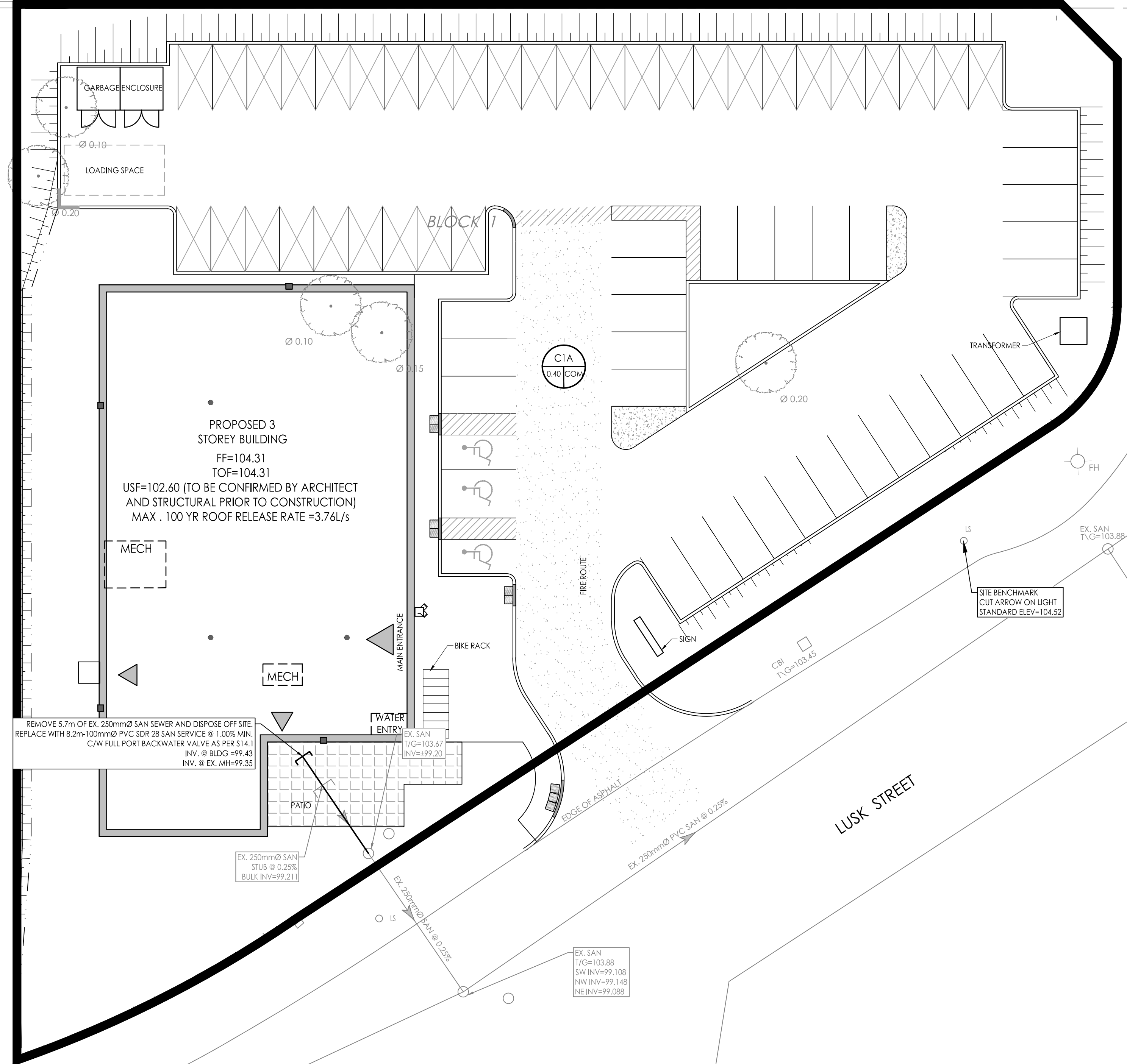
Client/Project
N45 ARCHITECTURE INC.
71 BANK STREET, 7th FLOOR
BLUESKY MEDICAL CENTRE
100 LUSK STREET
OTTAWA, ON

Title
SANITARY DRAINAGE PLAN

Project No. 160401505	Scale 1:200	Sheet 6 of 6	Revision 1
--------------------------	----------------	-----------------	---------------

SA-1 6 of 6 1

OCK 18
RESERVE



PROPOSED 3 STOREY BUILDING
FF=104.31
TOF=104.31
USF=102.60 (TO BE CONFIRMED BY ARCHITECT AND STRUCTURAL PRIOR TO CONSTRUCTION)
MAX. 100 YR ROOF RELEASE RATE =3.76L/S

REMOVE 5.7m OF EX. 250mmØ SANI SEWER AND DISPOSE OFF SITE.
REPLACE WITH 8.2m 100mmØ PVC SDR 26 SANI SERVICE @ 1.00% MIN C/W FULL PORT BACKWATER VALVE AS PER S14.1
INV. @ BLDG =99.43
INV. @ EX. MH=99.35

EX. 250mmØ SANI STUB @ 0.25%
BULK INV=99.211

EX. SANI T/G=103.88
SW INV=99.108
NW INV=99.148
NE INV=99.088

SITE BENCHMARK
FIRE HYDRANT FLANGE
BOLT ELEV=103.92

SITE BENCHMARK
CUT ARROW ON LIGHT
STANDARD ELEV=104.52

X:\Projects\160401505\Design\Drawings\160401505-08.dwg
2020/06/23 10:59:18 AM
2020/06/23 10:59:18 AM

ORIGINAL SHEET - ARCH D