

GENERAL NOTES:

- COORDINATE AND SCHEDULE ALL WORK WITH OTHER TRADES AND CONTRACTORS.
- DETERMINE THE EXACT LOCATION, SIZE, MATERIAL AND ELEVATION OF ALL EXISTING UTILITIES PRIOR TO COMMENCING CONSTRUCTION. PROTECT AND ASSUME RESPONSIBILITY FOR ALL EXISTING UTILITIES WHETHER OR NOT SHOWN ON THIS DRAWING.
- OBTAIN ALL NECESSARY PERMITS AND APPROVALS FROM THE CITY OF OTTAWA BEFORE COMMENCING CONSTRUCTION.
- BEFORE COMMENCING CONSTRUCTION OBTAIN AND PROVIDE PROOF OF COMPREHENSIVE, ALL RISK AND OPERATIONAL LIABILITY INSURANCE FOR \$2,000,000.00, INSURANCE POLICY TO NAME OWNERS, ENGINEERS AND ARCHITECTS AS CO-INSURED.
- RESTORE ALL DISTURBED AREAS ON-SITE AND OFF-SITE, INCLUDING TRENCHES AND SURFACES ON PUBLIC ROAD ALLOWANCES TO EXISTING CONDITIONS OR BETTER TO THE SATISFACTION OF MUNICIPAL AUTHORITIES.
- REMOVE FROM SITE ALL EXCESS EXCAVATED MATERIAL, ORGANIC MATERIAL AND DEBRIS UNLESS OTHERWISE INSTRUCTED BY ENGINEER. EXCAVATE AND REMOVE FROM SITE ANY CONTAMINATED MATERIAL. ALL CONTAMINATED MATERIAL SHALL BE DISPOSED OF AT A LICENSED LANDFILL FACILITY.
- ALL ELEVATIONS ARE GEODETIC. THE SITE BENCHMARKS ARE THE FIRE HYDRANT TOP OF SPINDLE FOR THE 3 HYDRANTS AROUND THE CITIGATE DRIVE AND CROSSKEY PLACE ROUNDABOUT (BM NO. 1 ELEV = 96.51, BM NO. 2 ELEV = 96.26, BM NO. 3 ELEV = 96.87), REFER TO ANNIS, O'SULLIVAN, VOLLEBEKK LTD., TOPOGRAPHICAL PLAN OF SURVEY OF BLOCK 13, REGISTERED PLAN 4M-1536, CITY OF OTTAWA.
- REFER TO GEOTECHNICAL INVESTIGATION REPORT NO. PG5284-1 (DATED APRIL 26, 2020) PREPARED BY PATERSON GROUP INC. FOR SUBSURFACE CONDITIONS, CONSTRUCTION RECOMMENDATIONS AND GEOTECHNICAL INSPECTION REQUIREMENTS. THE GEOTECHNICAL CONSULTANT IS TO REVIEW ON-SITE CONDITIONS AFTER EXCAVATION PRIOR TO PLACEMENT OF THE GRANULAR MATERIAL.
- REFER TO ARCHITECTS AND LANDSCAPE ARCHITECTS DRAWINGS FOR BUILDING AND HARD SURFACE AREAS AND DIMENSIONS.
- REFER TO THE STORMWATER MANAGEMENT REPORT No. R-2020-044, DATED JUNE 01, 2020 PREPARED BY NOVATECH.
- SAW CUT AND KEYGRIND ASPHALT AT ALL ROAD CUTS AND ASPHALT TIE IN POINTS AS PER CITY OF OTTAWA STANDARDS (R10 AND R25).

GRADING NOTES:

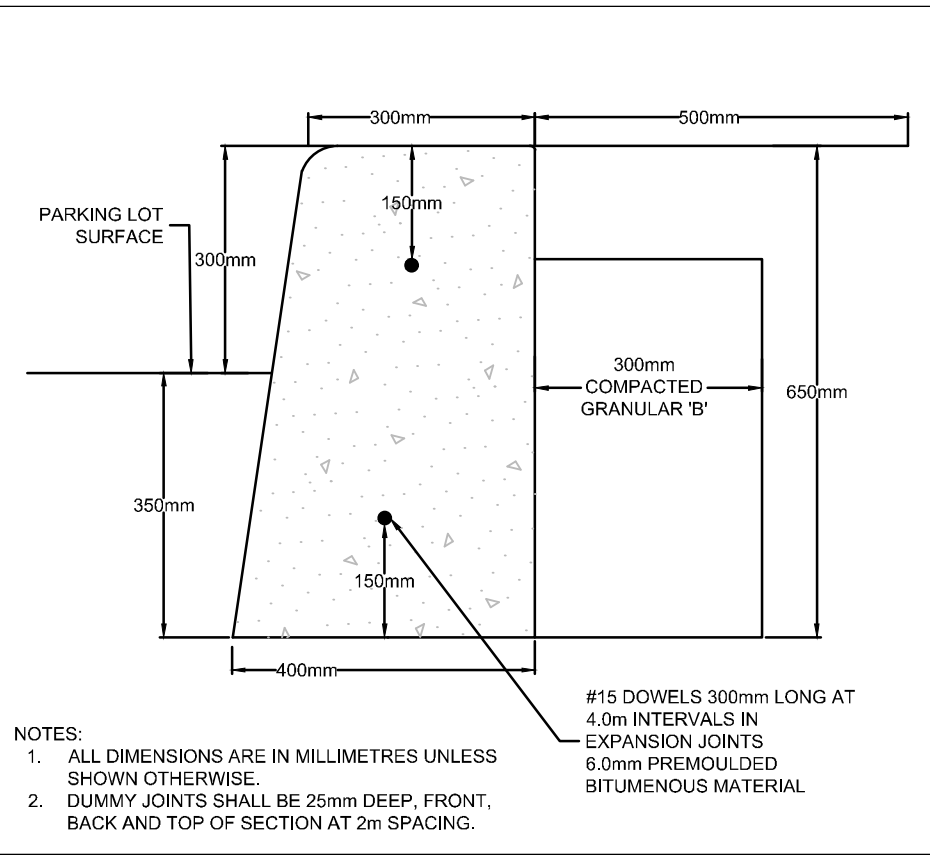
- ALL TOPSOIL, ORGANIC OR DELETERIOUS MATERIAL MUST BE ENTIRELY REMOVED FROM BENEATH THE PROPOSED BUILDING AND PAVED AREAS.
- EXPOSED SUBGRADES IN PROPOSED PAVED AREAS SHOULD BE PROOF ROLLED WITH A LARGE STEEL DRUM ROLLER AND ANY SOFT AREAS EVIDENT FROM THE PROOF ROLLING SHOULD BE SUBCAVATED AND REPLACED WITH SUITABLE MATERIAL THAT IS FROST COMPATIBLE WITH THE EXISTING SOILS.
- THE PAVEMENT GRANULAR BASE AND SUBBASE SHOULD BE PLACED IN MAXIMUM 300mm THICK LIFTS AND COMPACTED TO A MINIMUM OF 98% OF THE MATERIAL'S STANDARD PROCTOR MAXIMUM DRY DENSITY VALUE.
- ALL CURBS AND SIDEWALKS TO BE BUILT AS PER CITY OF OTTAWA DETAIL DRAWINGS SC1.4 AND SC4.
- GRADE AND/OR FILL BEHIND PROPOSED CURB AND BETWEEN BUILDINGS AND CURBS, WHERE REQUIRED TO PROVIDE POSITIVE DRAINAGE.
- MINIMUM OF 2% GRADE FOR ALL GRASS AREAS UNLESS OTHERWISE NOTED.
- ALL GRADES BY CURBS ARE EDGE OF PAVEMENT GRADES UNLESS OTHERWISE INDICATED.
- REFER TO LANDSCAPE PLAN FOR PLANTING AND OTHER LANDSCAPE FEATURE DETAILS.
- CONTRACTOR TO PROVIDE THE CONSULTANT WITH A GRADING PLAN INDICATING THE AS-BUILT ELEVATION OF EVERY DESIGN GRADE SHOWN ON THIS PLAN.

PAVEMENT STRUCTURES:

LIGHT DUTY (CAR PARKING AREAS ONLY)
50mm HL3 OR SUPERPAVE 12.5
150mm GRAN "A"
450mm GRAN "B" TYPE II
SEPARATION LAYER - WOVEN GEOTEXTILE TERRAFIX 200W OR APPROVED EQUIVALENT

HEAVY DUTY (ACCESS LANES AND HEAVY TRUCK PARKING)
40mm HL3 OR SUPERPAVE 12.5
50mm HL8 OR SUPERPAVE 19.0
50mm HL8 OR SUPERPAVE 19.0
150mm GRAN "A"
550mm GRAN "B" TYPE II
SEPARATION LAYER - WOVEN GEOTEXTILE TERRAFIX 200W OR APPROVED EQUIVALENT

CONCRETE APRONS
200mm CONCRETE
150mm GRAN "A"
600mm GRAN "B" TYPE II
100mm HI-40 RIGID INSULATION



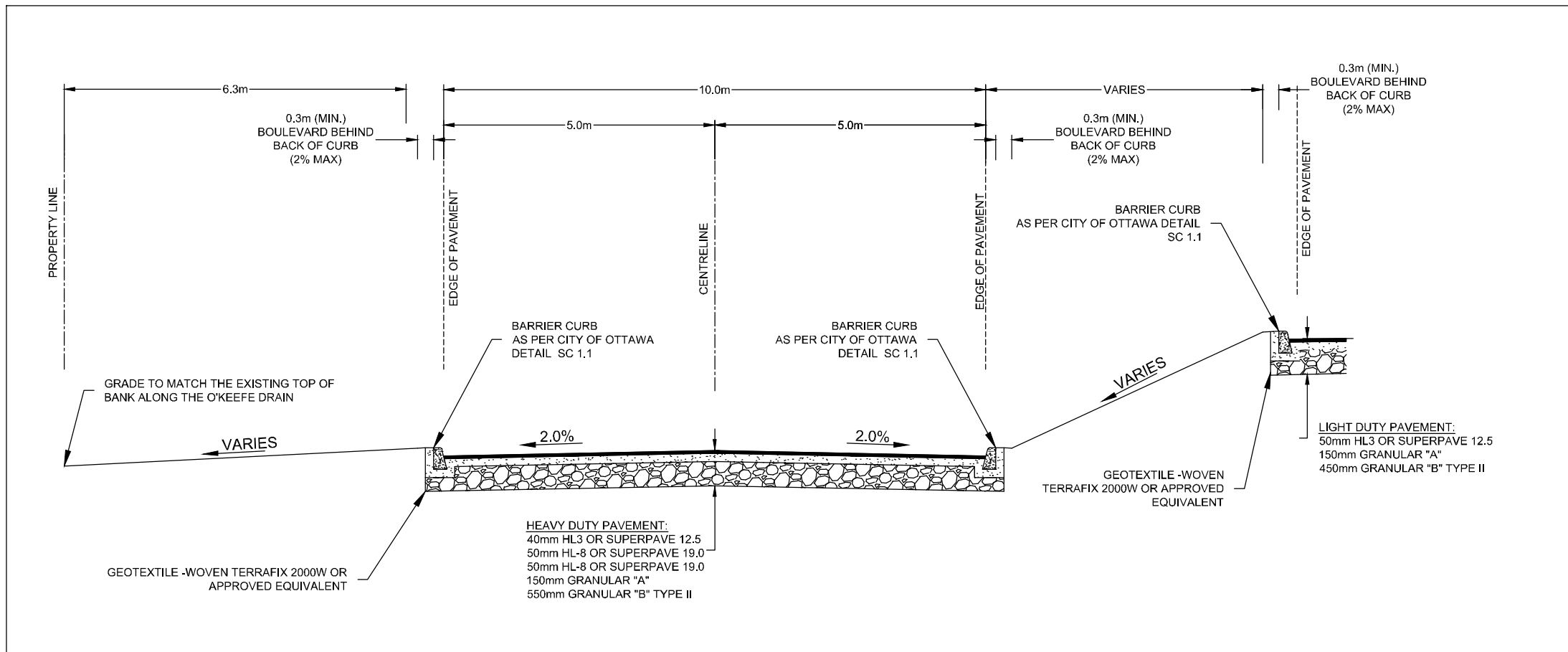
300mm CONCRETE BARRIER CURB DETAIL
SCALE = N.T.S.

THIS PLAN IS APPROVED BY THE CITY OF OTTAWA
UNDER SECTION 41 OF THE PLANNING ACT THIS
9 DAY OF JULY, 2020.

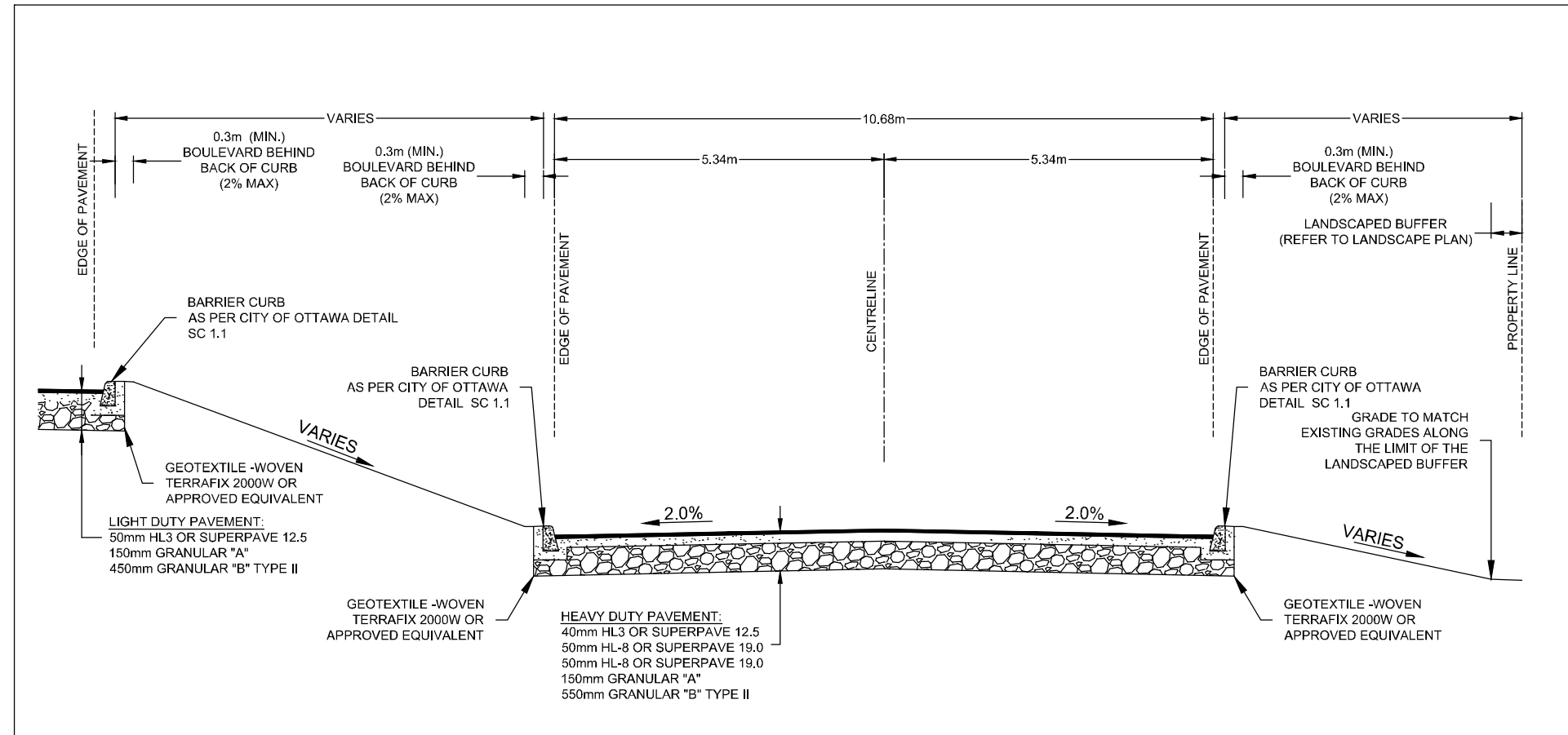
[Signature]

LILY XU, MCIP, RPP, MANAGER
DEVELOPMENT REVIEW SOUTH
PLANNING, INFRASTRUCTURE AND ECONOMIC
DEVELOPMENT DEPARTMENT, CITY OF OTTAWA

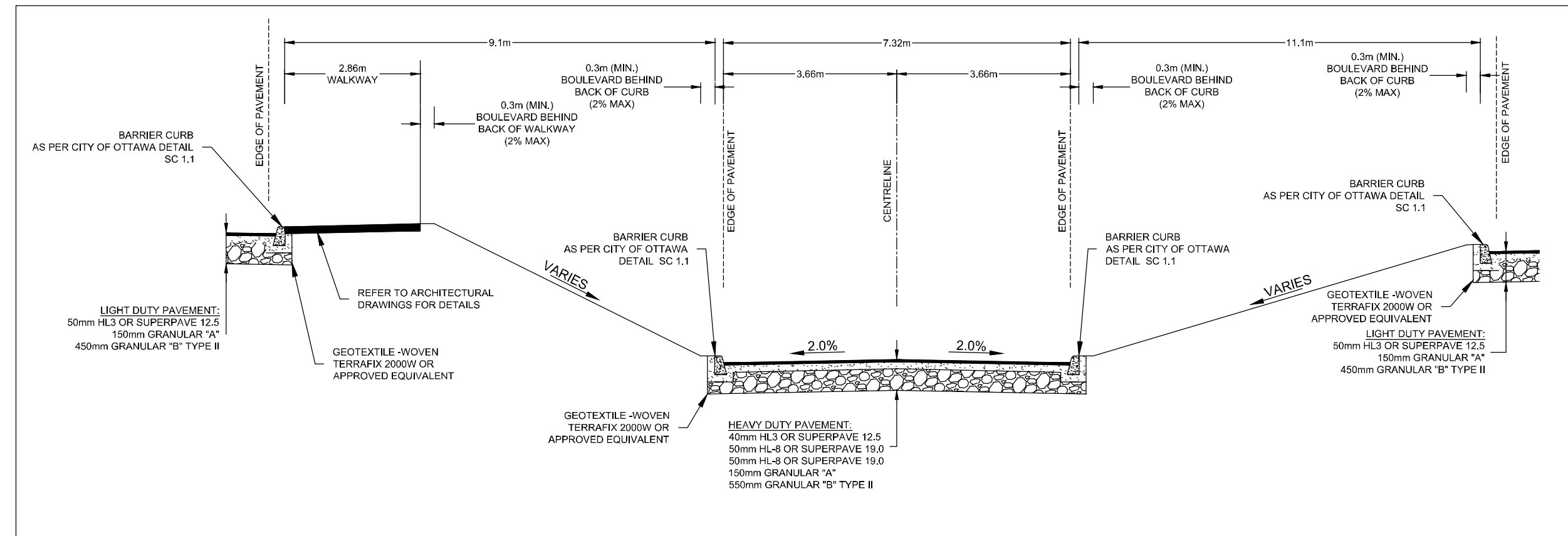
NOT FOR
CONSTRUCTION



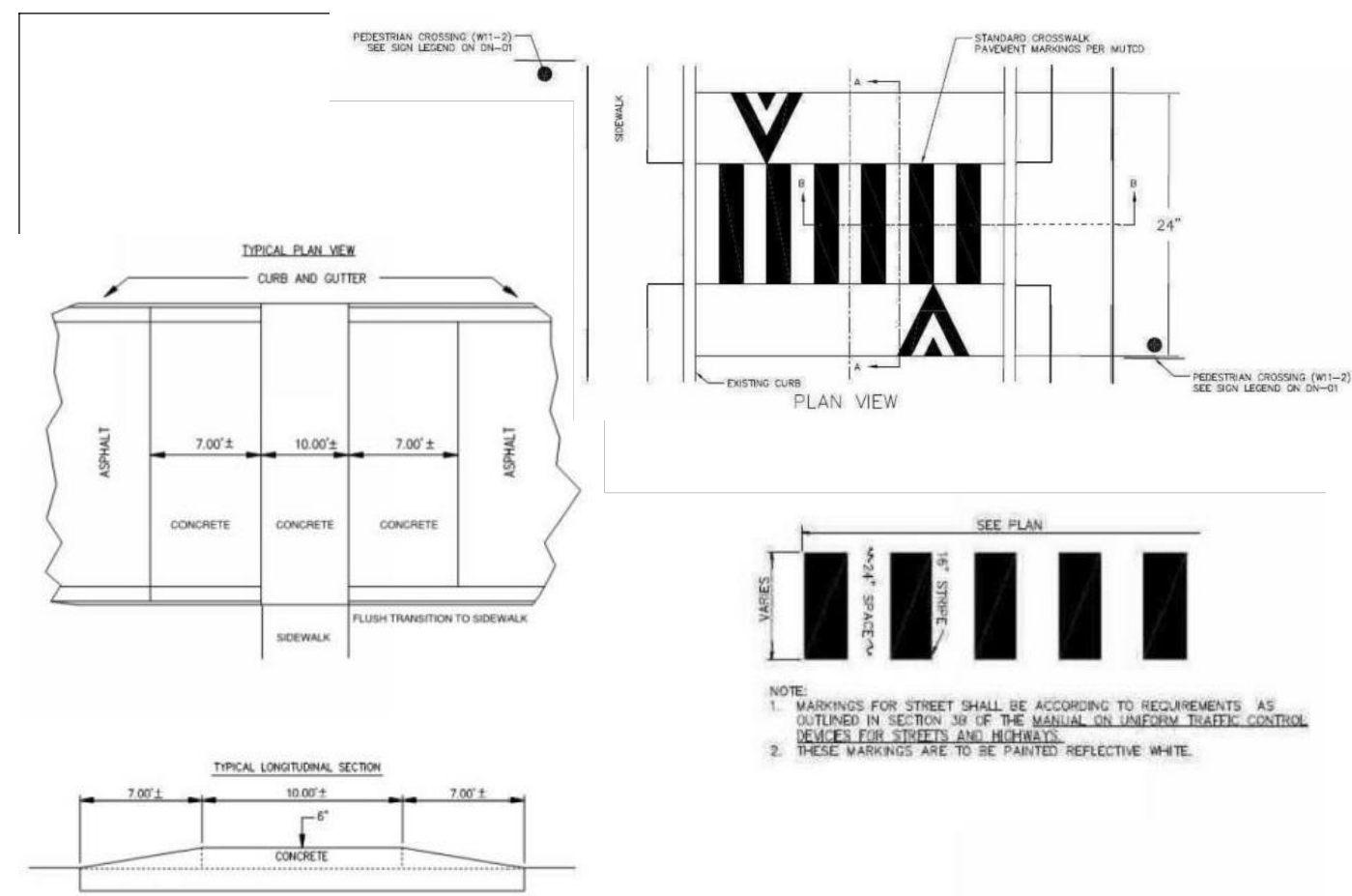
PRIVATE ACCESS ROAD
(HEAVY DUTY)
(SECTION A-A)
NTS



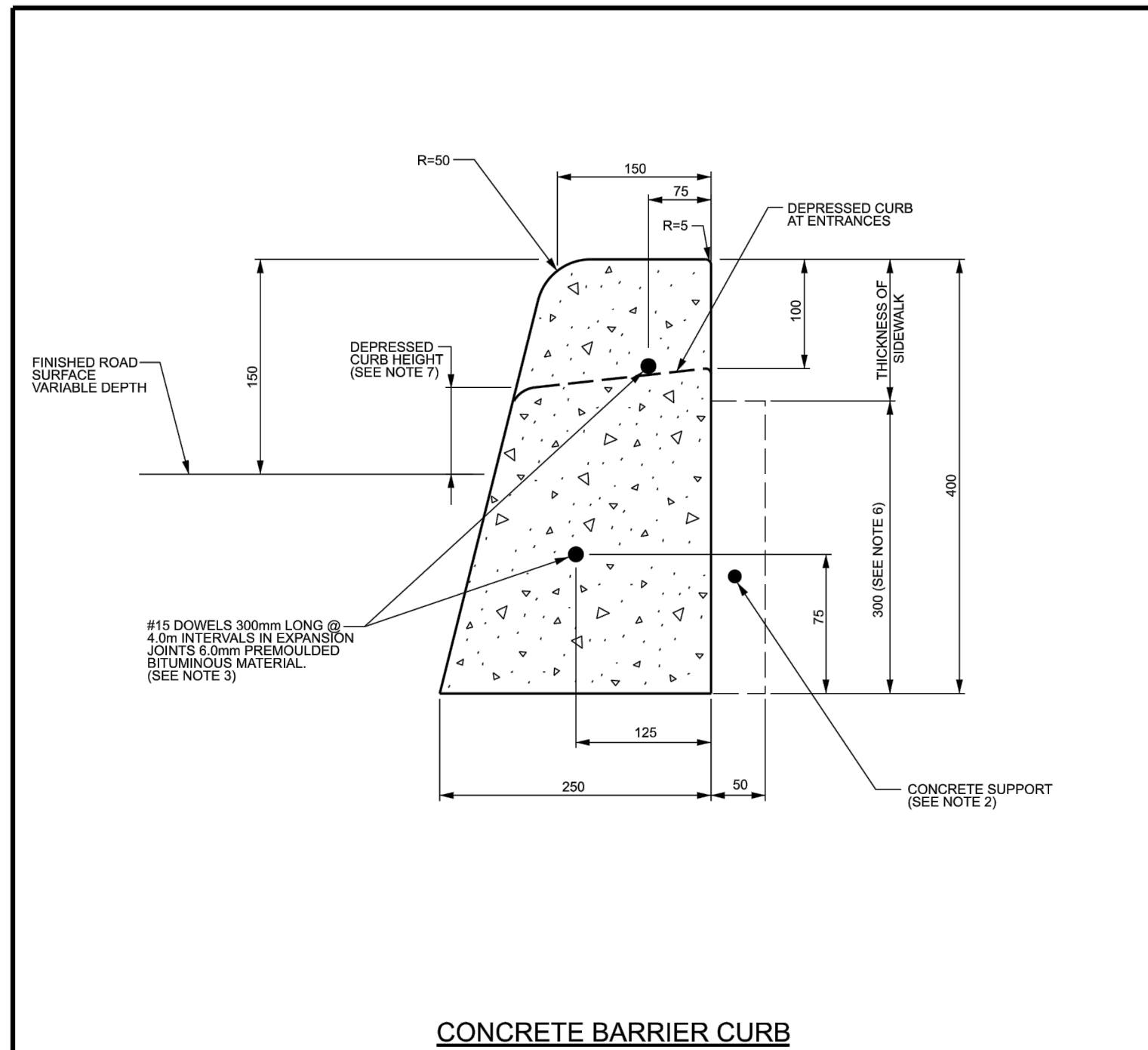
SOUTH ACCESS ROAD
(HEAVY DUTY)
(SECTION C-C)
NTS



MIDDLE ACCESS ROAD
(HEAVY DUTY)
(SECTION B-B)
NTS



CONCRETE RAISED PEDESTRIAN
CROSSWALK DETAILS
SCALE = N.T.S.



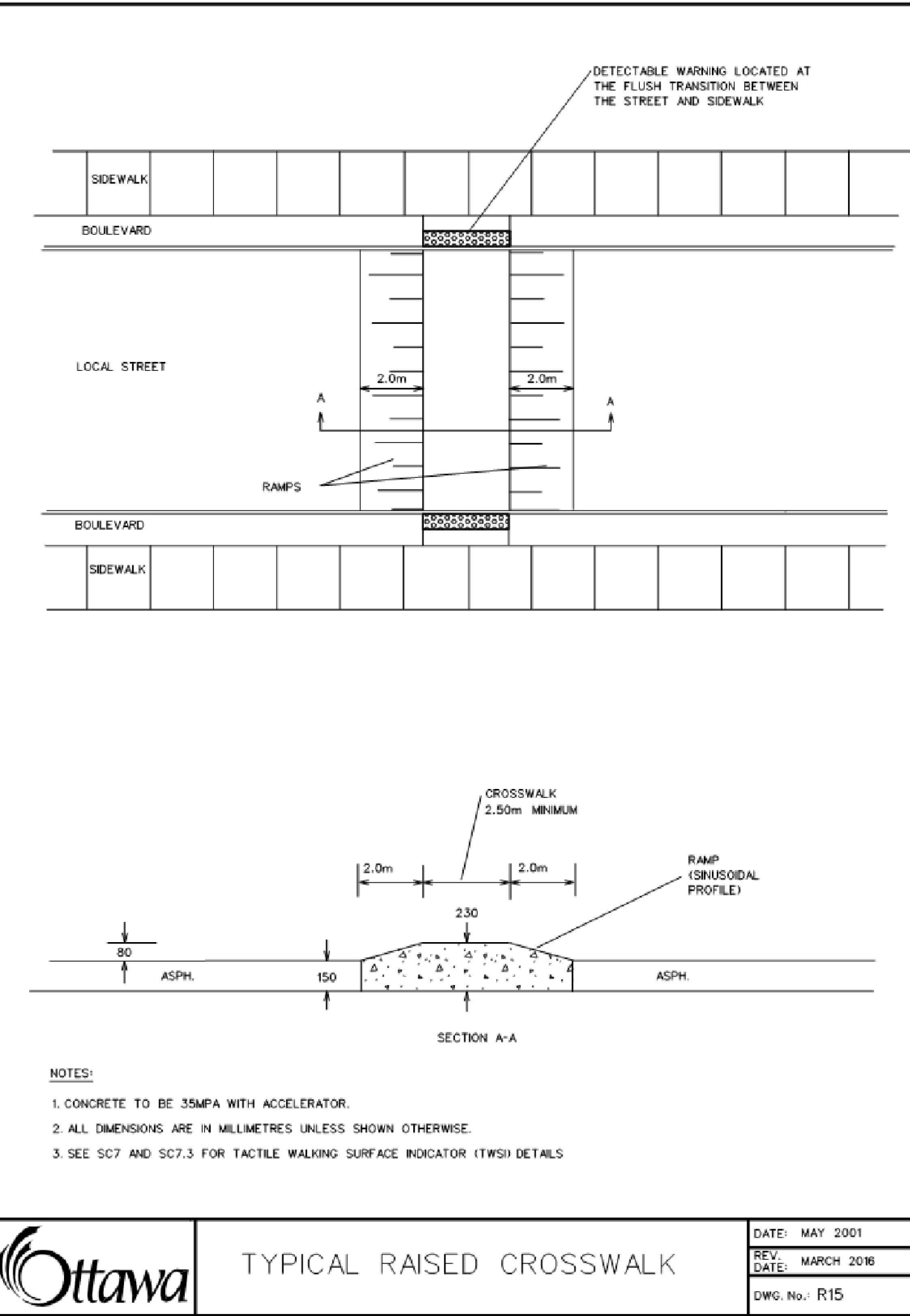
CONCRETE BARRIER CURB

- NOTES:
- THE FULL CURB DEPTH SHALL BE CARRIED THROUGH THE DEPRESSED ACCESS CROSSING.
 - A CONCRETE SUPPORT IS REQUIRED WHEN BUILT ADJACENT TO THE SIDEWALK.
 - IF AN EXTRUSION CURBING MACHINE IS USED, THE EXPANSION BITUMINOUS MATERIAL AND THE #15 DOWELS ARE TO BE PLACED AT THE END OF THE EXTRUSION.
 - ALL DIMENSIONS ARE IN MILLIMETRES UNLESS SHOWN OTHERWISE.
 - DUMMY JOINTS SHALL BE 25mm DEEP, FRONT, BACK AND TOP OF SECTION AT 4m SPACING OR MATCH JOINTING WHERE SIDEWALK IS ADJACENT.
 - FOR DEPRESSED CURB AT ENTRANCES USE 250.
 - DEPRESSED CURB HEIGHT - FOR PEDESTRIAN CURB RAMP 0 TO 6 mm AND FOR PRIVATE ENTRANCES 0 TO 25mm.

N.T.S.

	CONCRETE BARRIER CURB FOR GRANULAR BASE PAVEMENT (MODIFIED OPSD-600.110)		DATE:	JANUARY 2003
			REV. DATE:	MARCH 2019
			DWG. No.:	SC1.1

NOTE:
THE POSITION OF ALL POLE LINES, CONDUITS,
WATERMANS, SEWERS AND OTHER
UNDERGROUND AND OVERGROUND UTILITIES AND
STRUCTURES IS NOT NECESSARILY SHOWN ON
THE CONTRACT DRAWINGS, AND WHERE SHOWN,
THE ACCURACY OF THE POSITION OF SUCH
UTILITIES AND STRUCTURES IS NOT GUARANTEED.
BEFORE STARTING WORK, DETERMINE THE EXACT
LOCATION OF ALL SUCH UTILITIES AND
STRUCTURES AND ASSUME ALL LIABILITY FOR
DAMAGE TO THEM.



- NOTES:
- CONCRETE TO BE 35MPa WITH ACCELERATOR.
 - ALL DIMENSIONS ARE IN MILLIMETRES UNLESS SHOWN OTHERWISE.
 - SEE SC7 AND SC7.3 FOR TACTILE WALKING SURFACE INDICATOR (TWSI) DETAILS.

	TYPICAL RAISED CROSSWALK		DATE:	MAY 2001
			REV. DATE:	MARCH 2019
			DWG. No.:	R15

LOCATION
PROJECT PYTHON
222 CITIGATE DRIVE, CITY OF OTTAWA

DRAWING NAME
NOTES AND DETAILS
GRADING PLAN

PROJECT No. 120025
REV. REV #5
DRAWING No. 120025-NDGR
PLAN # 18129