

ENLARGEMENT PLANT LISTS

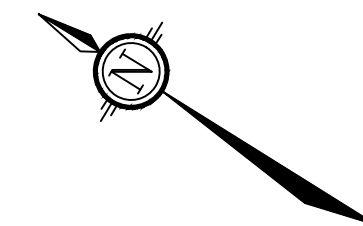
120025 - Block 13 - Plants Adjacent to Building - Plant List						
KEY	QTY	BOTANICAL NAME	COMMON NAME	SIZE	COND	SPACING
Deciduous Trees						
AFAF	8	<i>Acer x freemanii 'Autumn Fantasy'</i>	Autumn Fantasy Maple	50mm Cal	WB	As Shown
GT1	12	<i>Gleditsia triacanthos var. inermis 'Shademaster'</i>	Shademaster Honeylocust	50mm Cal	WB	As Shown
MSS	4	<i>Malus 'Spring Snow'</i>	Spring Snow Crabapple	50mm Cal	WB	As Shown
UAV	13	<i>Ulmus americana 'Valley Forge'</i>	Valley Forge Elm	50mm Cal	WB	As Shown
Coniferous Shrubs						
Psm	1	<i>Pinus mugo 'Slowmound'</i>	Slowmound Mugo Pine	40cm Spr	PT	100cm O.C.
Deciduous Shrubs						
Csa	120	<i>Cornus sericea 'Farrow'</i>	Arctic Fire Dogwood	45cm Ht	PT	90cm O.C.
Hjk	420	<i>Hypericum kalmianum</i>	Kalm's St. John's Wort	45cm Ht	PT	60cm O.C.
Pj	221	<i>Physocarpus opulifolius 'UEFAM'</i>	Amber Jubilee Ninebark	60cm Ht	PT	100cm O.C.
Rag	30	<i>Rhus aromatica 'Gro-Low'</i>	Gro-Low Fragrant Sumac	45cm Ht	PT	100cm O.C.

120025 - Block 13 - Plants Adjacent to Building - Plant List						
KEY	QTY	BOTANICAL NAME	COMMON NAME	SIZE	COND	SPACING
Perennials						
hfb	36	<i>Hosta 'Fragrant Blue'</i>	Fragrant Blue Hosta	1g	PT	90cm O.C.
pls	326	<i>Perovskia atriplicifolia 'Little Spire'</i>	Dwarf Russian Sage	1g	PT	60cm O.C.
rg	360	<i>Rudbeckia fulgida 'Little Gold Star'</i>	Little Gold Star Coneflower	1g	PT	45cm O.C.
sm	38	<i>Salvia nemorosa 'May Night'</i>	May Night Perennial Salvia	1g	PT	45cm O.C.
Vines						
Lds	32	<i>Lonicera x brownii 'Dropmore Scarlett'</i>	Dropmore Scarlett Honeysuckle	1g	PT	150cm O.C.
pvn	56	<i>Panicum virgatum 'Northwind'</i>	Northwind Switch Grass	1g	PT	60cm O.C.
sh	442	<i>Sporobolus heterolepis</i>	Prairie Dropseed	1g	PT	45cm O.C.

120025 - Block 13 - Entrance Features - Plant List						
KEY	QTY	BOTANICAL NAME	COMMON NAME	SIZE	COND	SPACING
Deciduous Shrubs						
Csa	29	<i>Cornus sericea 'Farrow'</i>	Arctic Fire Dogwood	45cm Ht	PT	90cm O.C.
Hjk	59	<i>Hypericum kalmianum</i>	Kalm's St. John's Wort	45cm Ht	PT	60cm O.C.
Rag	24	<i>Rhus aromatica 'Gro-Low'</i>	Gro-Low Fragrant Sumac	45cm Ht	PT	100cm O.C.
Perennials						
pls	26	<i>Perovskia atriplicifolia 'Little Spire'</i>	Dwarf Russian Sage	1g	PT	60cm O.C.
Ornamental Grasses						
pvn	14	<i>Panicum virgatum 'Northwind'</i>	Northwind Switch Grass	1g	PT	60cm O.C.

THIS PLAN IS APPROVED BY THE CITY OF OTTAWA
UNDER SECTION 41 OF THE PLANNING ACT THIS
9 DAY OF JULY , 2020.

LILY XU, MCIP, RPP, MANAGER
DEVELOPMENT REVIEW SOUTH
PLANNING, INFRASTRUCTURE AND ECONOMIC
DEVELOPMENT DEPARTMENT, CITY OF OTTAWA



KEY PLAN
N.T.S.

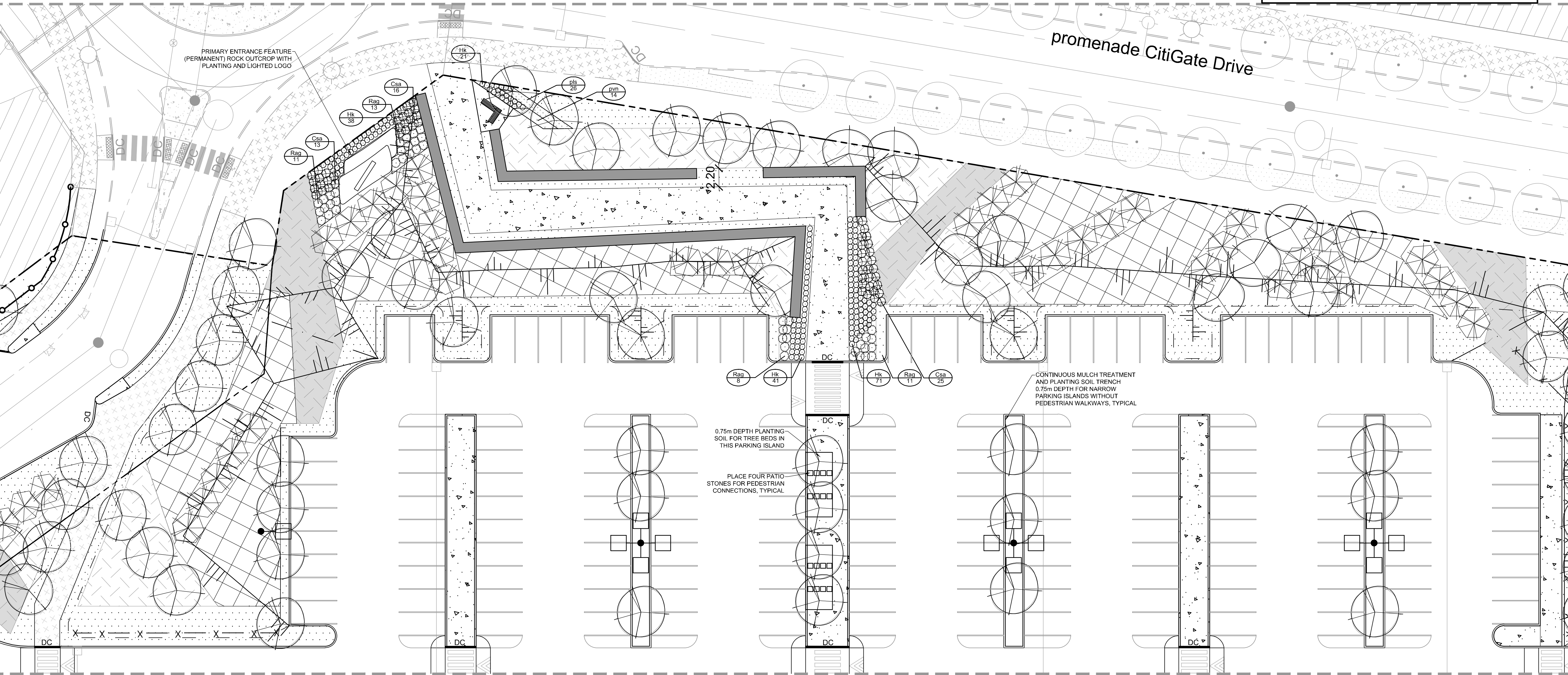


PLANTING

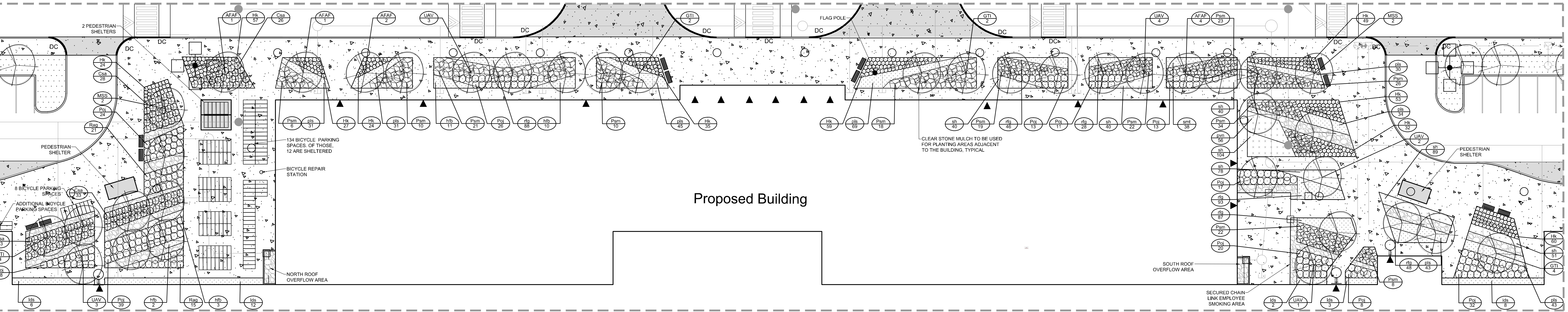
- This drawing shall be read in conjunction with all relevant Architectural, Engineering, and related drawings and documents.
- Refer to Engineering Drawings for Grading. Provide drainage as indicated in grading plan. Round all tops and toes of slopes, smoothly. Compact all areas to 95% Standard Proctor Density unless otherwise noted.
- Refer to Architectural Drawings for site layout.
- Refer to Engineering Drawings for site servicing. Contractor must contact utility companies for locates prior to excavation or planting.
- It is essential to use the plans and details in conjunction with the specifications and notes.
- Existing trees to be retained shall be protected according to the contract detail and specifications.
- Plant material shall be No. 1 Grade and shall comply with Canadian Standards for Nursery Stock (latest edition) published by the Canadian Nursery Landscape Association.
- Use plant material with strong fibrous root system free of disease, defects or injuries, and structurally sound. Use trees with straight trunks, well and characteristically branched for species. Obtain approval from consultant of plant material at source prior to digging. All trees and shrubs shall be container grown, potted, W/B or B/B, as indicated on Plant List. Bare root planting will only be acceptable for certain species and as approved by the Landscape Architect.
- Plant material substitutions shall not be permitted without the written approval from the consultant, with 48 hours notice, prior to shipping plant material.
- Plant locations are schematic / approximate only. Contractor shall stake out locations on site for approval by the Landscape Architect prior to installation. The illustrated number of plants shown in the Planting Plan supersedes the estimated number in the Plant List. Contractor to report any discrepancies to the Landscape Architect prior to installation. Contractor will assume full responsibility if the Landscape Architect is not notified.
- Shrubs, Perennials, Vines, and Groundcovers shall be planted in a continuous planting bed of 450mm depth with approved topsoil covered with 75mm depth shredded bark mulch. For reforestation beds, refer to the detail on Sheet 120025-L-D1.
- Ensure trees are thoroughly watered following planting. Monitor material and ensure adequate moisture until acceptance.
- In heavy clay or poorly drained soils, set root ball with root collar 75-100mm higher than finished grade.
- Sod and/or seed areas to receive 100mm depth topsoil as specified. Sod shall be No. 1 Kentucky Bluegrass Sod grown from minimum mixture of 3 Kentucky Bluegrass cultivars. Quality and source shall comply with Canadian Standards for Nursery Stock, Section 17, (latest edition) published by the Canadian Nursery Landscape Nursery Landscape Association. Unless otherwise specified, turf is to be maintained by the contractor until a second cutting is accepted by the Landscape Architect.
- Apply the following mineral fertilizer unless soil tests show other requirements: Sodded areas - (8-32-16) 8% Nitrogen, 32% Phosphorus, 16% Potash at a rate of 350kg/ha. - Planting Beds - (8-32-16) - 8% Nitrogen, 32% Phosphorus, 16% Potash as per manufacturer specifications.
- Reinstate all areas damaged or disturbed beyond the Limit of Work.

GENERAL

- Plant labels for trees can be found on other sheets in the landscape sheet set.



ENLARGEMENT - A



ENLARGEMENT - B

NOTE:
THE POSITION OF ALL POLE LINES, CONDUITS,
WATERMANS, SEWERS AND OTHER
UNDERGROUND AND OVERGROUND UTILITIES AND
STRUCTURES IS NOT NECESSARILY SHOWN ON
THE CONTRACT DRAWINGS, AND WHERE SHOWN,
THE ACCURACY OF THE POSITION OF SUCH
UTILITIES AND STRUCTURES IS NOT GUARANTEED.
BEFORE STARTING WORK, DETERMINE THE EXACT
LOCATION OF ALL SUCH UTILITIES AND
STRUCTURES AND ASSUME ALL LIABILITY FOR
DAMAGE TO THEM.

NOT FOR
CONSTRUCTION

SCALE			
1:250			
0 2 4 6 8 10			
DESIGN			
CHECKED			
DRAWN			
CHECKED			
APPROVED			
REVISED PER CITY COMMENTS			
ISSUED FOR INTERNAL REVIEW			
ISSUED FOR DESIGN REVIEW			
APPLICATION FOR SITE PLAN APPROVAL			
No.	REVISION	DATE	BY

FOR REVIEW ONLY	
KW/JP	
JP	
KW	
JP	
RU	

NOVATECH
Engineers, Planners & Landscape Architects
Suite 200, 240 Michael Cowpland Drive
Ottawa, Ontario, Canada K2M 1P6
Telephone (613) 254-9643
Facsimile (613) 254-9857
Website www.novatech-eng.com

LOCATION
PROJECT PYTHON
222 CITIGATE DRIVE, CITY OF OTTAWA

DRAWING NAME
LANDSCAPE
ENLARGEMENTS A AND B

PROJECT No.	120025-00
REV	REV # 4
DRAWING No.	120025-L6