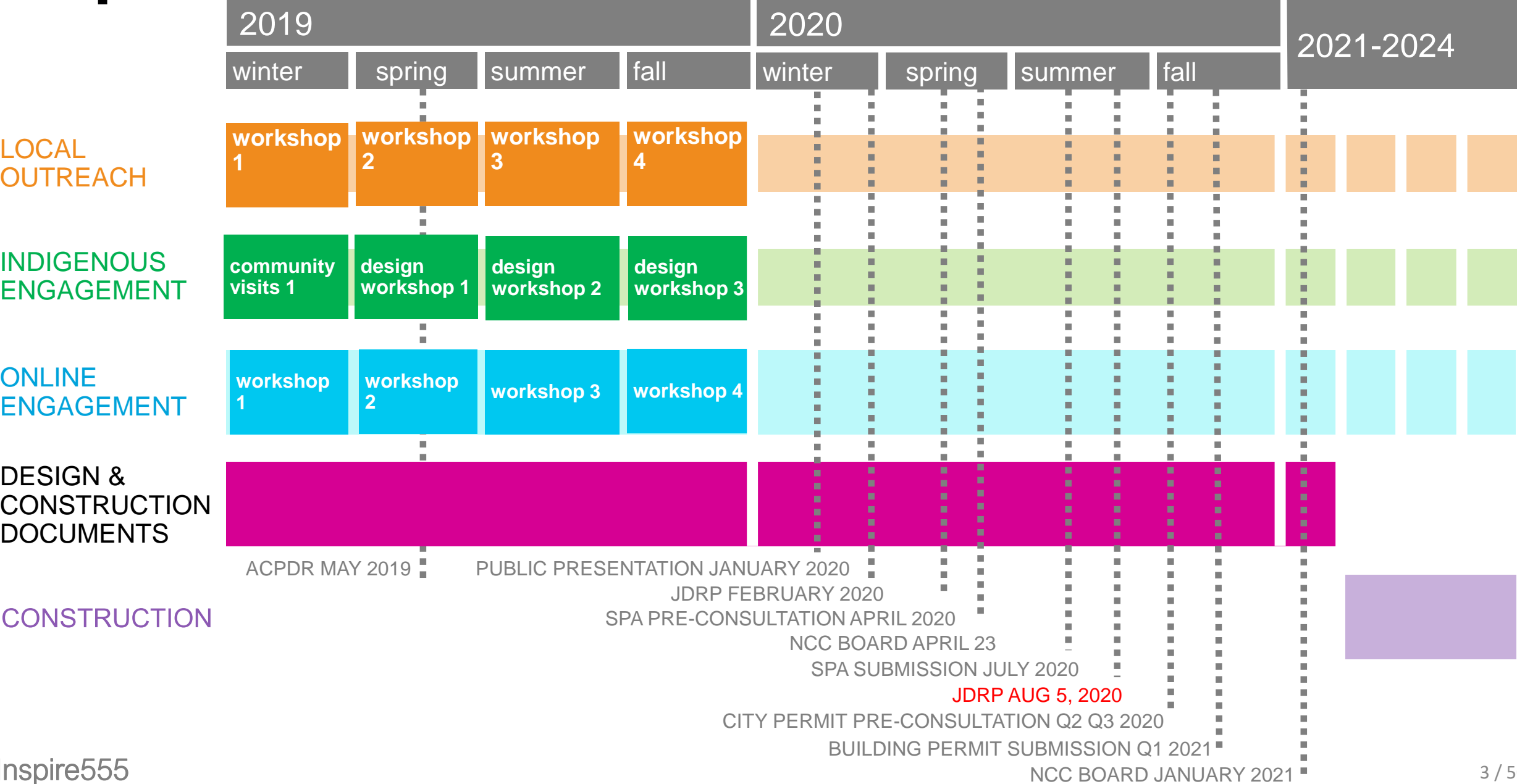


Introduction by NCC/City Staff

Ottawa Public Library Library and Archives Canada Joint Facility

Joint Design Review Panel
August 5th, 2020

Inspire555 Schedule








close to 1300 participants
attended 10 in-person
workshop sessions

close to 3000 participated in online engagement activities

Contact Us Français

 Project Progress News Get involved Inspiration 



Get involved

Register now for the workshop on Spaces and Relationships!

Bring your inspiration and input to this exciting project! The workshops will explore how spaces inside the new facility complement one another, the exterior and the views. Participants will also have the chance to take a fresh look at what LAC and OPL spaces and services will be offered in the new facility, and help inspire the design.

Register

Stay up to Date

* indicates required

Email Address *

Subscribe

The Inspire555 Series

You told us what you want in a new Central Library and joint facility with Library and Archives Canada. You helped us decide where to build it. Now it's time for you – whether you live in Ottawa, Vancouver, St-John or Iqaluit – to inspire how it will come to life!

Read More



3 Indigenous design workshops community visits national and urban consultation

project update:

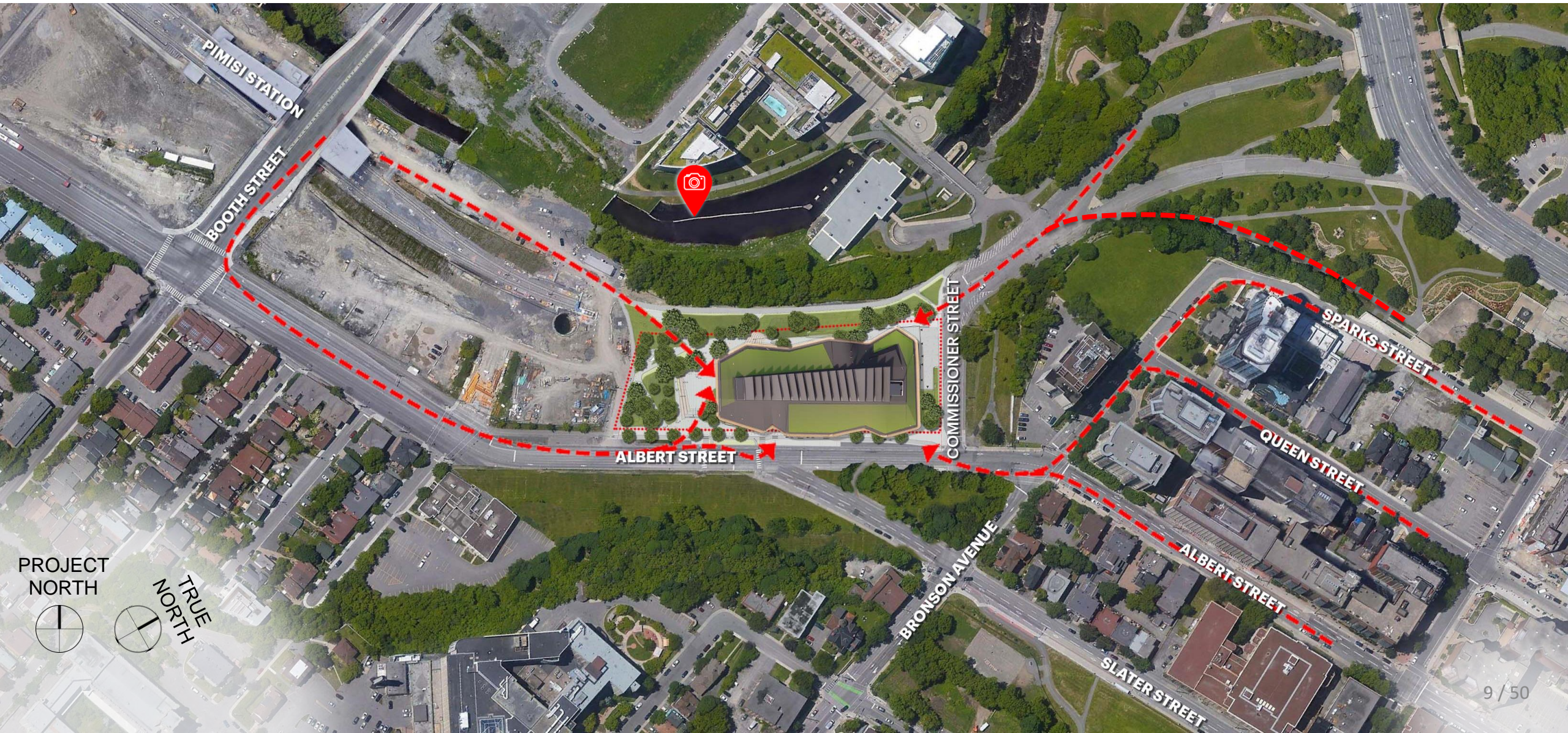
urban context
landscape design
building design
Indigenous design features

LeBreton Flats Concept Masterplan



Urban Context

Site Connectivity with the Future Context



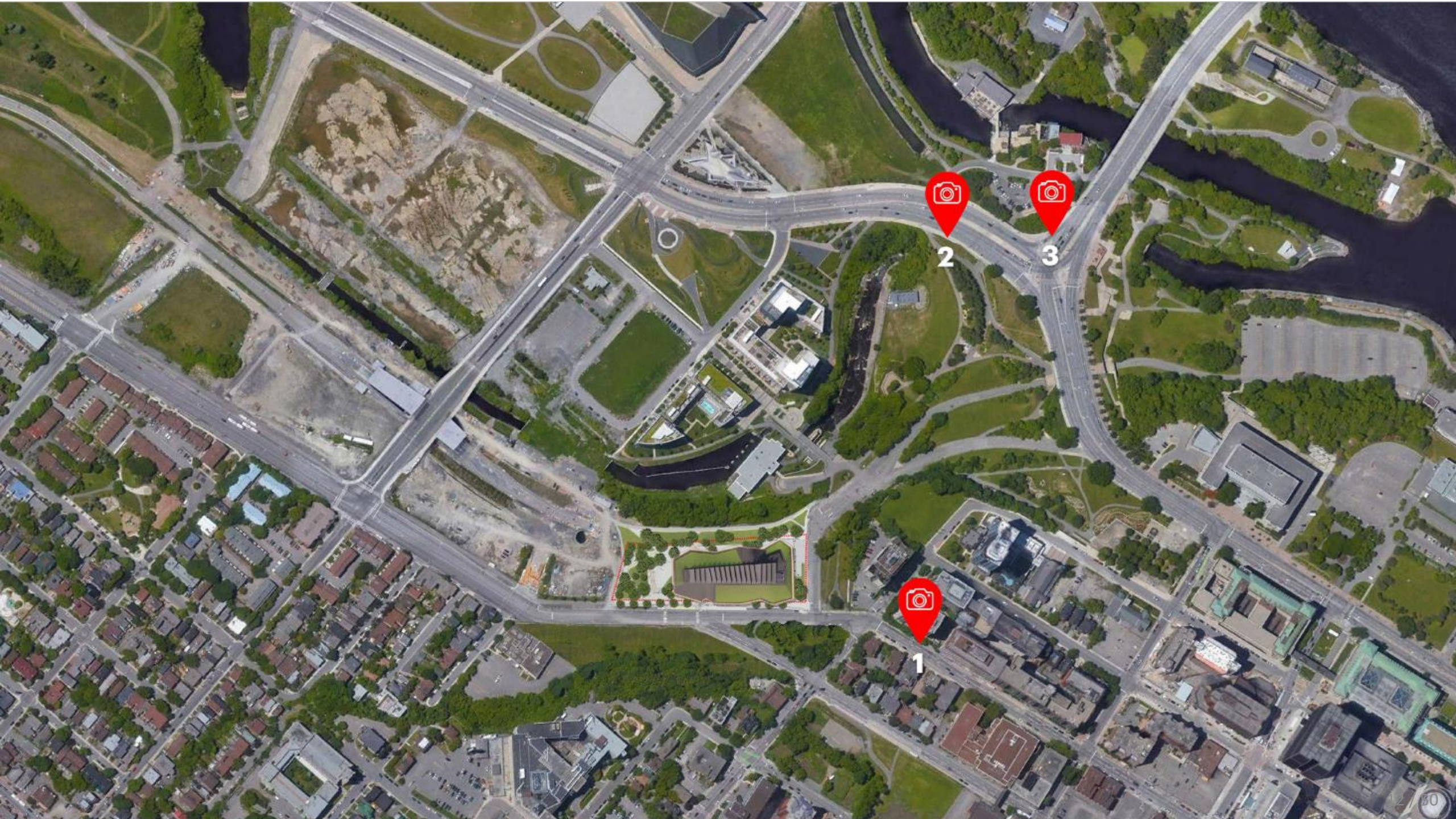
Urban Context Skyline View



Urban Context

View From the Building





2



3



1







Urban Context

Albert Street Corridor



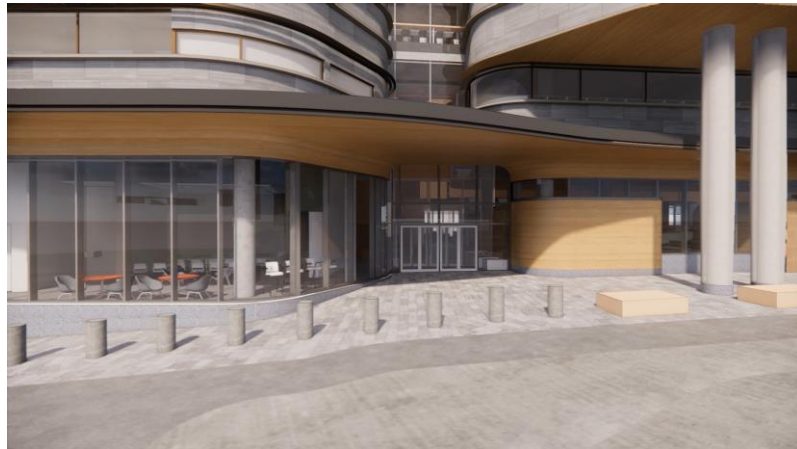
KEYMAP



01



02



03



04



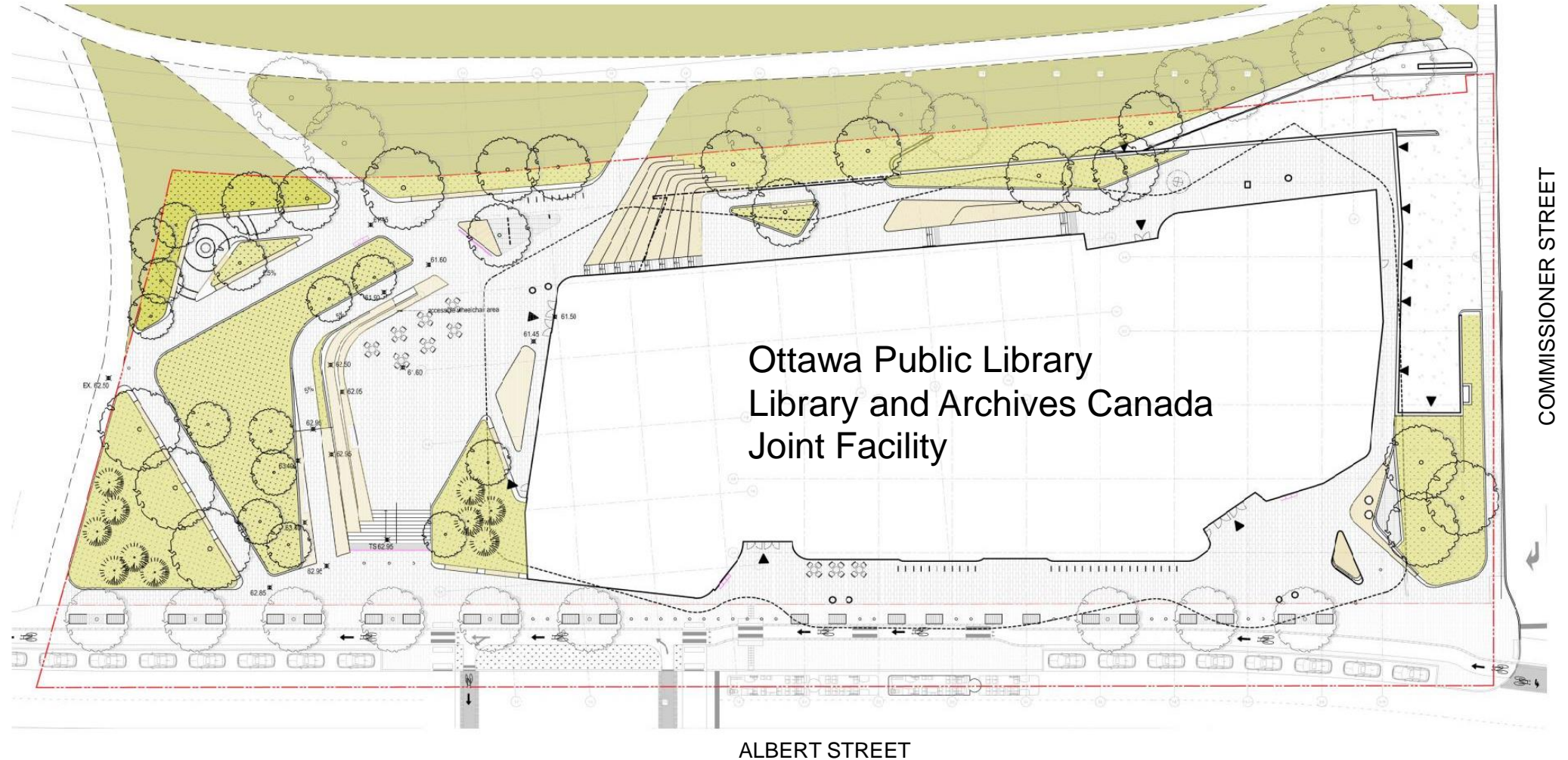
05

Urban Context

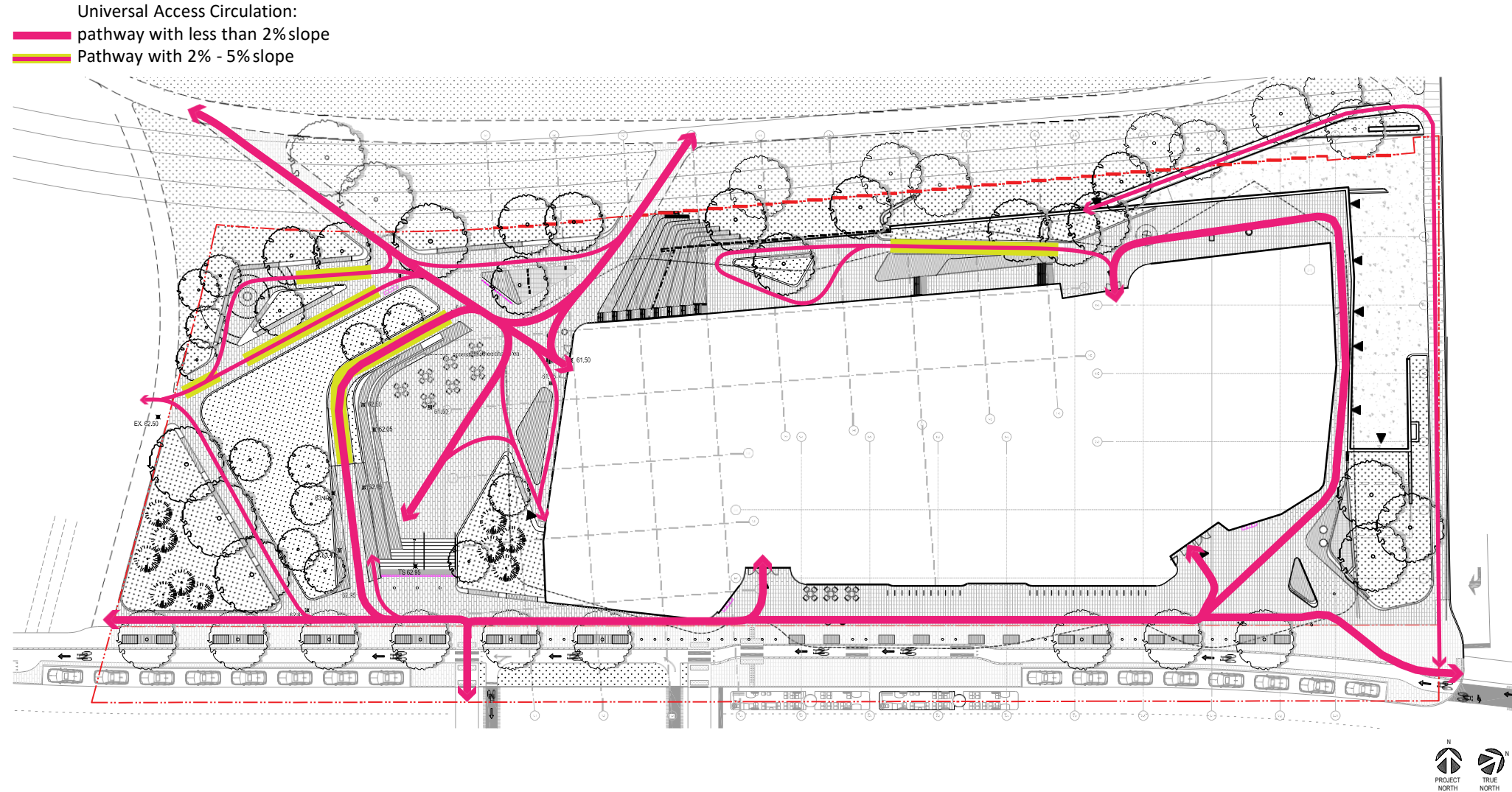
Albert Street Corridor Animation



Updated Landscape Design



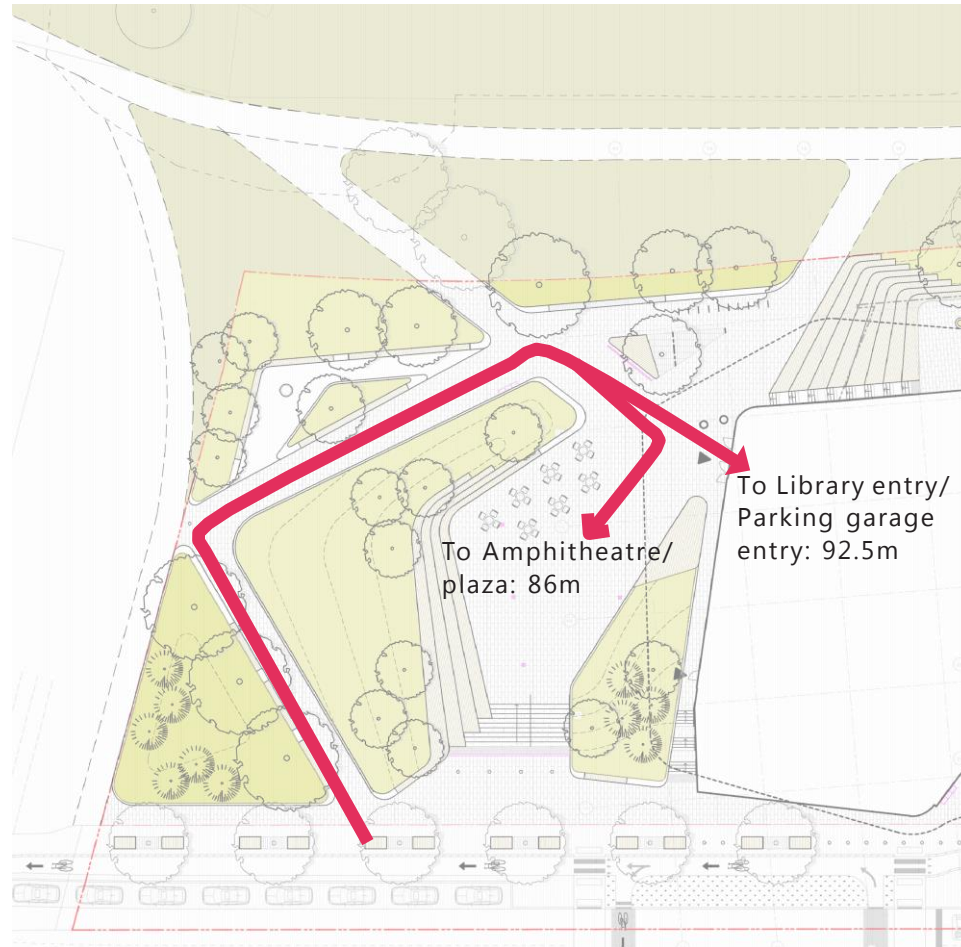
Site Plan – Accessible Routes



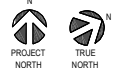
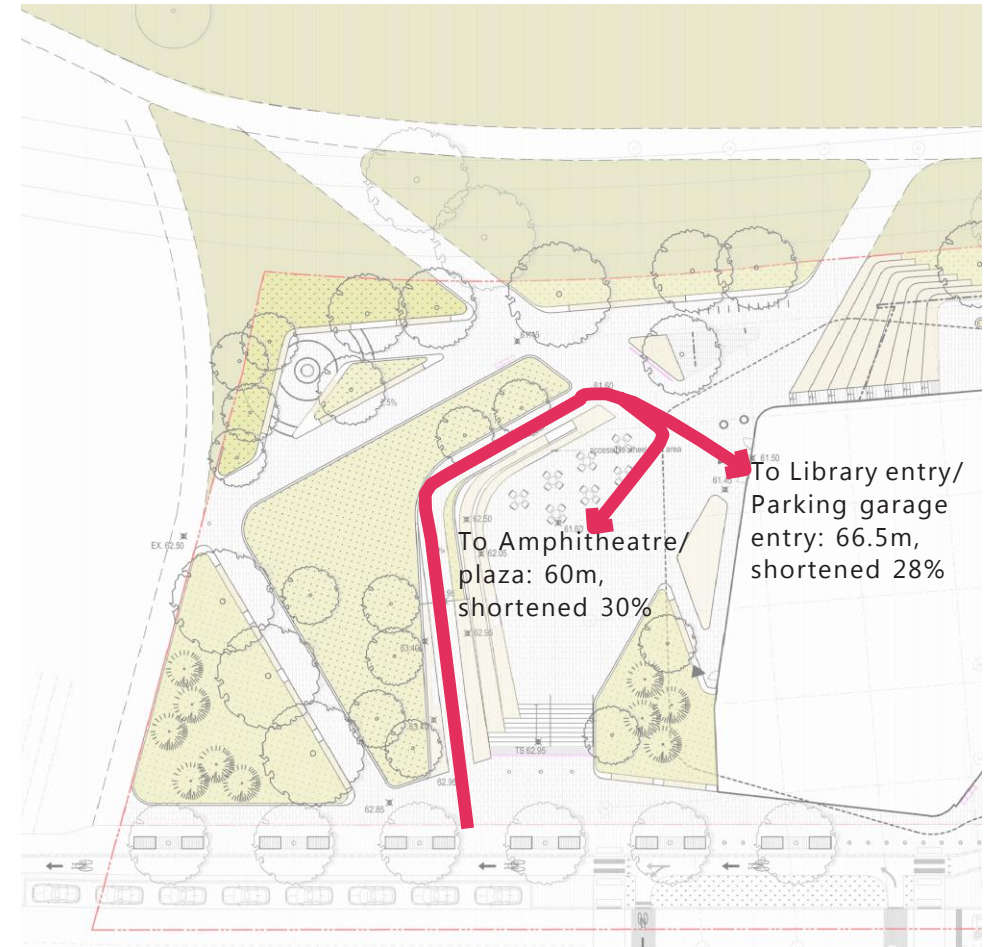
Landscape Design

Site Plan – Accessible Routes

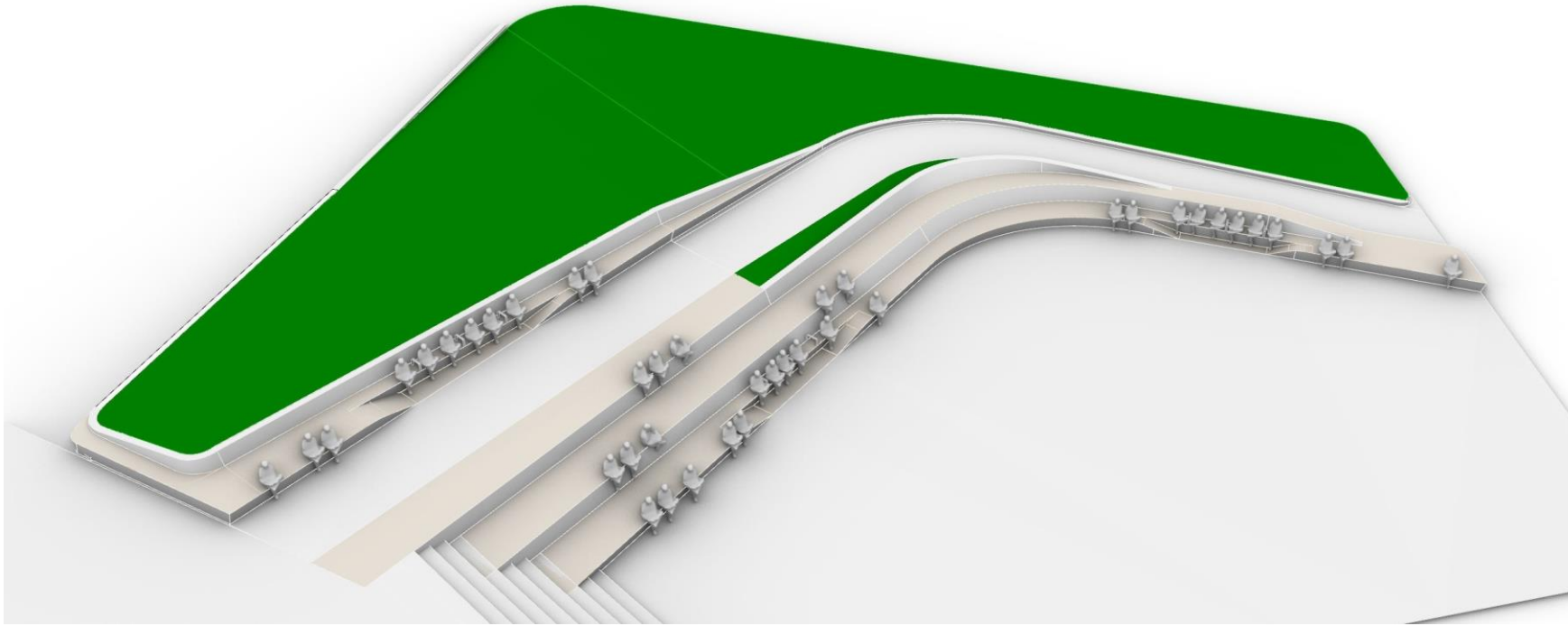
OLD PLAZA CIRCULATION



NEW PLAZA CIRCULATION



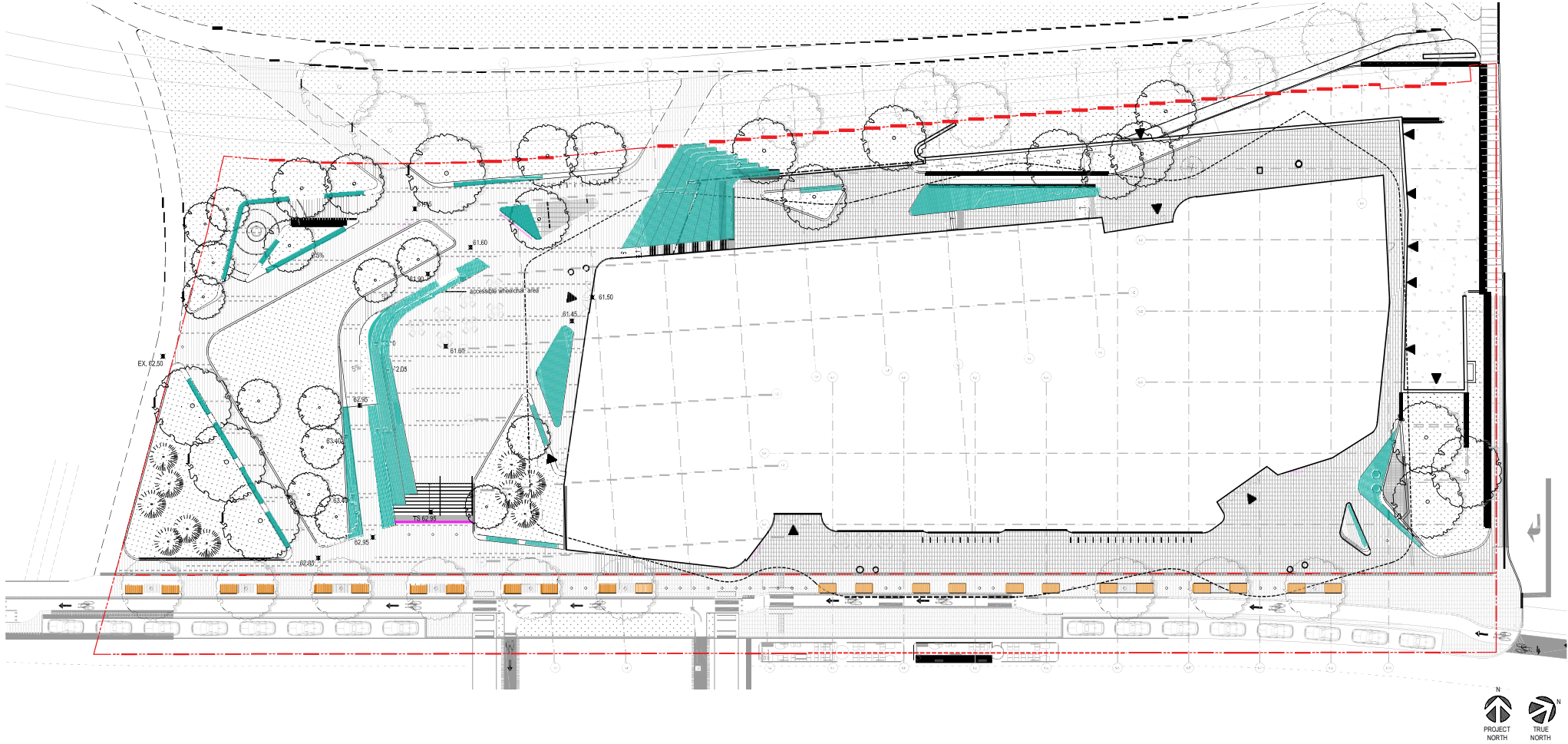
Accessible Routes – Paving / Pattern



Landscape Design

Accessible Seating

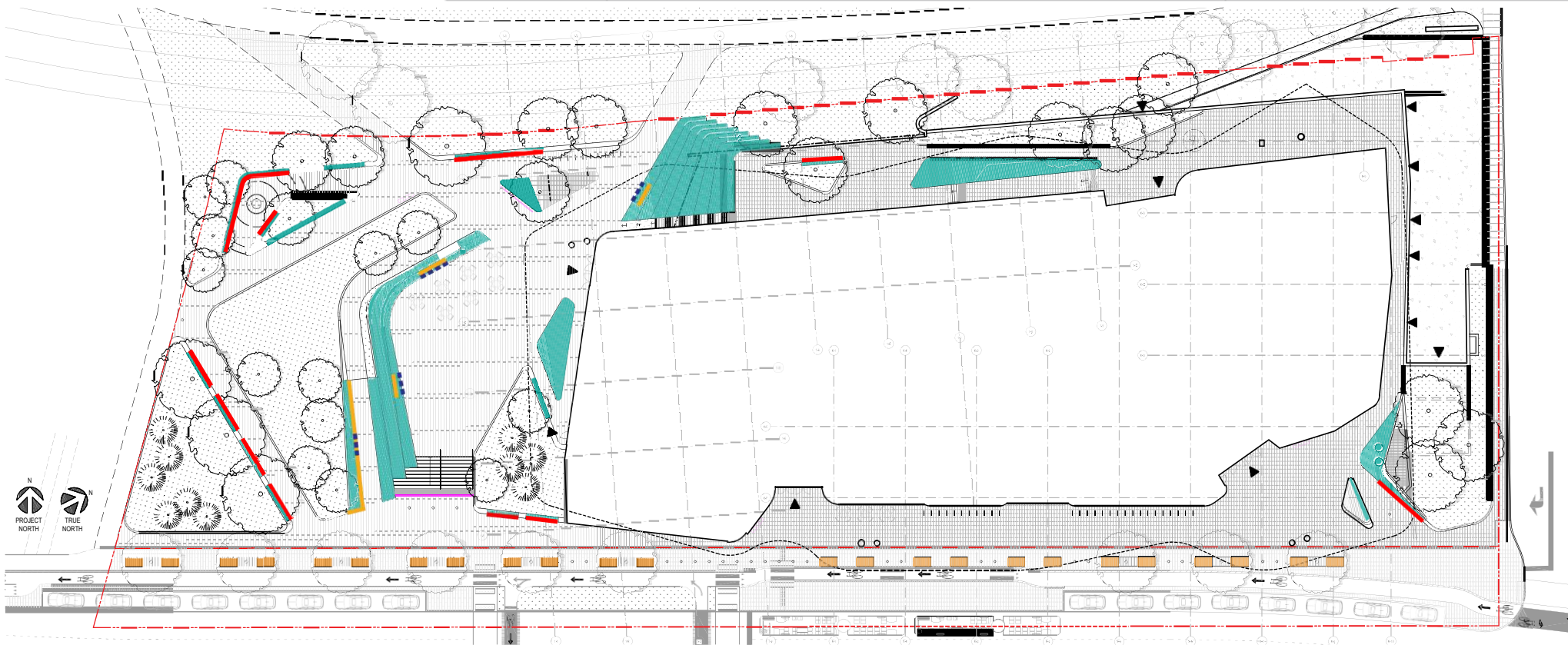
- Total seating space: 437.5 lm
- Total Albert Blvd seating (offsite): 124.8 lm



Landscape Design

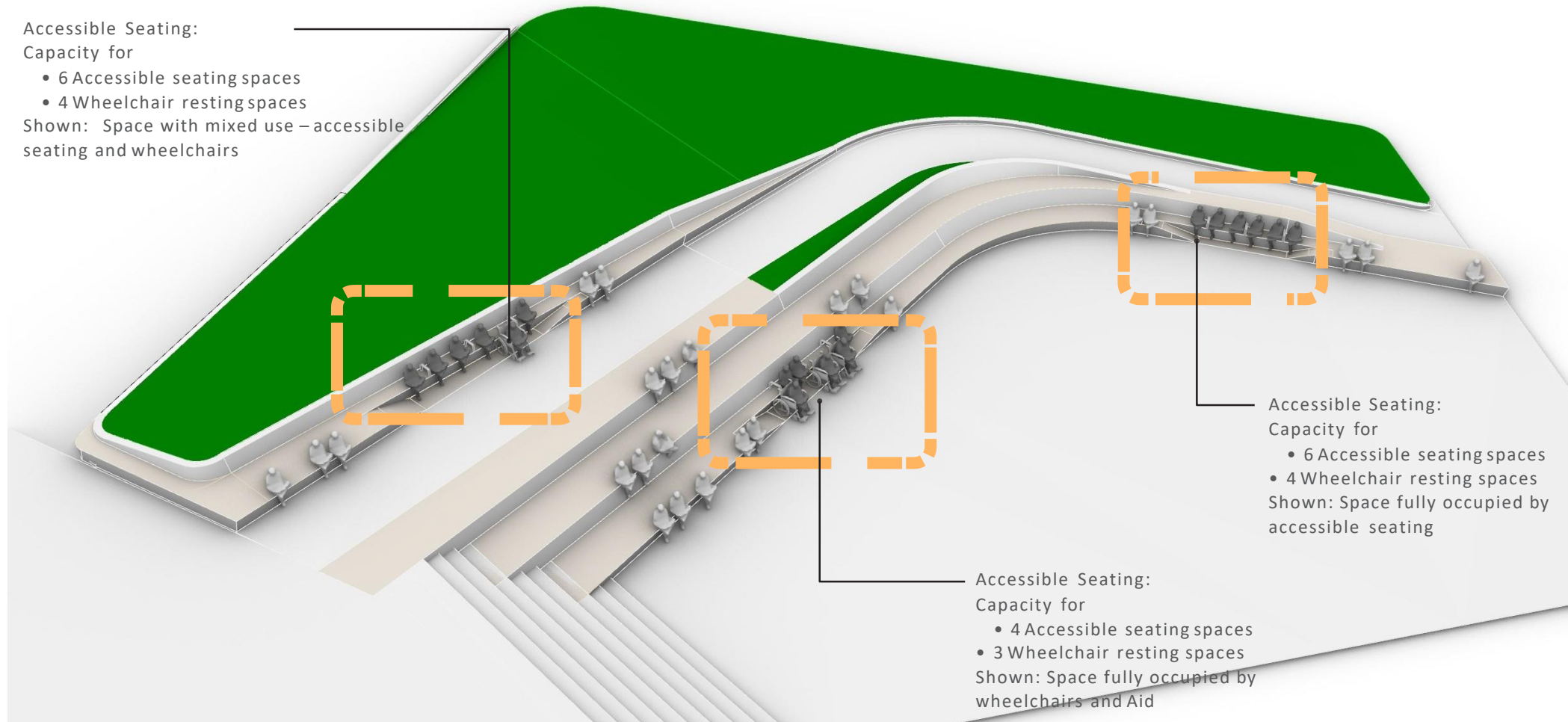
Accessible Seating

Type		Seating (0.5m/person, 1m/wheelchair)
On Site	Total Seating (437.5 m)	875
	Total Targeted Accessible Seating (20% total site seating)	175
	Total Achieved Accessible Seating	154+42 = 196
	• Accessible Bench	154
	• Accessible Amphitheater	42
	Total Wheelchair Resting Spots	13
Off Site	Total Movable Tables and Chairs	TBD, currently 28 seats shown
	Total Seating Albert Boulevard (124.8m)	249

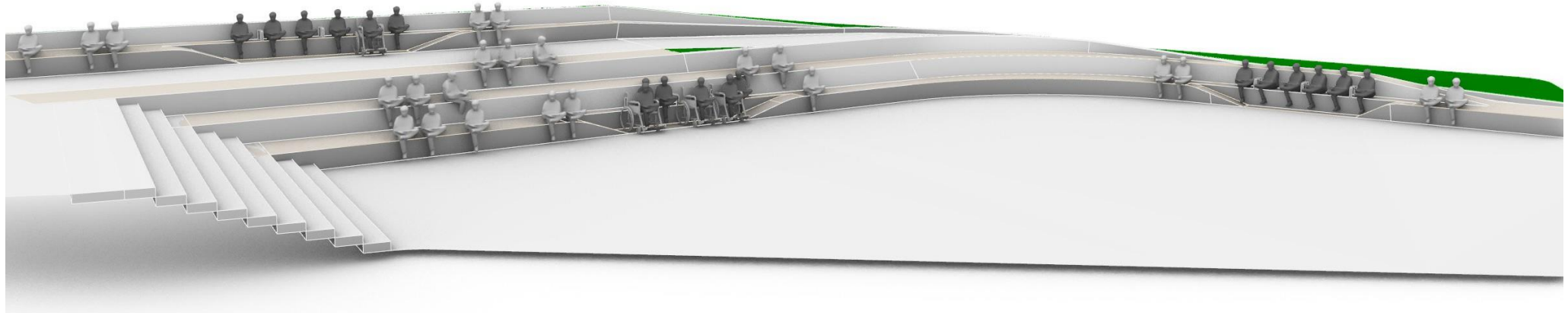


Landscape Design

Accessible Seating

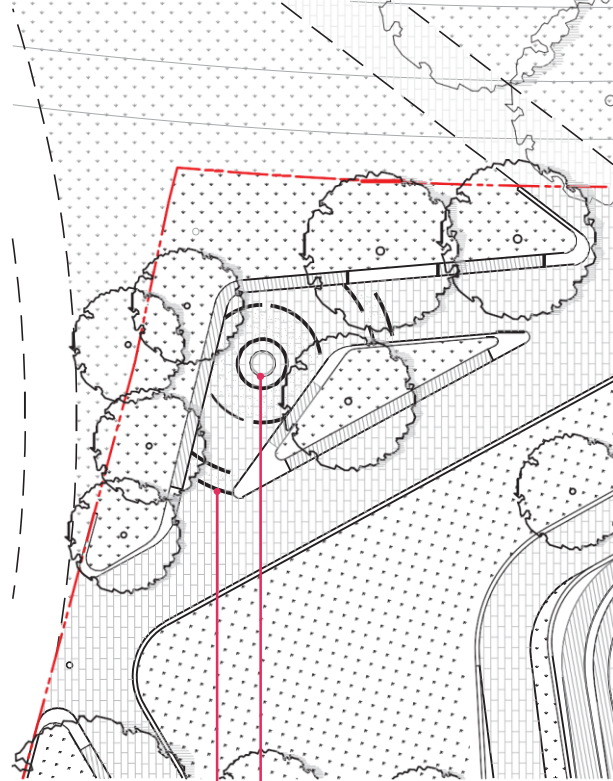


Accessible Seating



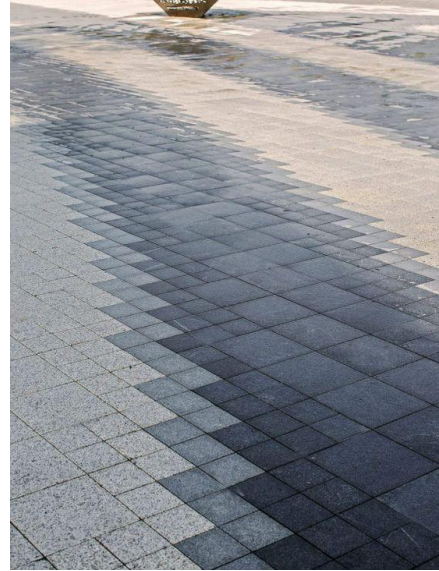
Landscape Design

Gathering Circle



Center could reference
in some way the
Indigenous Art or
Space on the Terrace

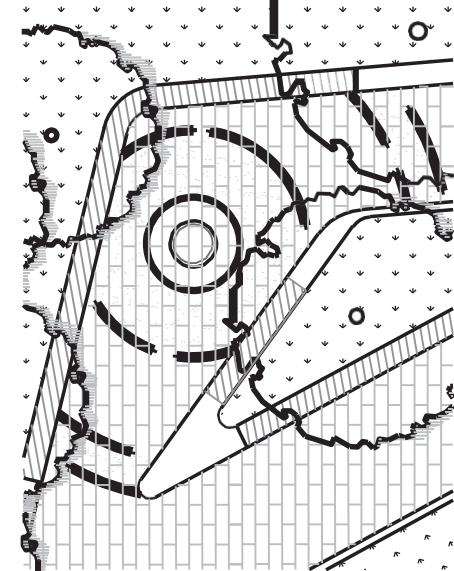
Noncontinuous circular
stone bands



Stone band integrated in concrete
unit paving



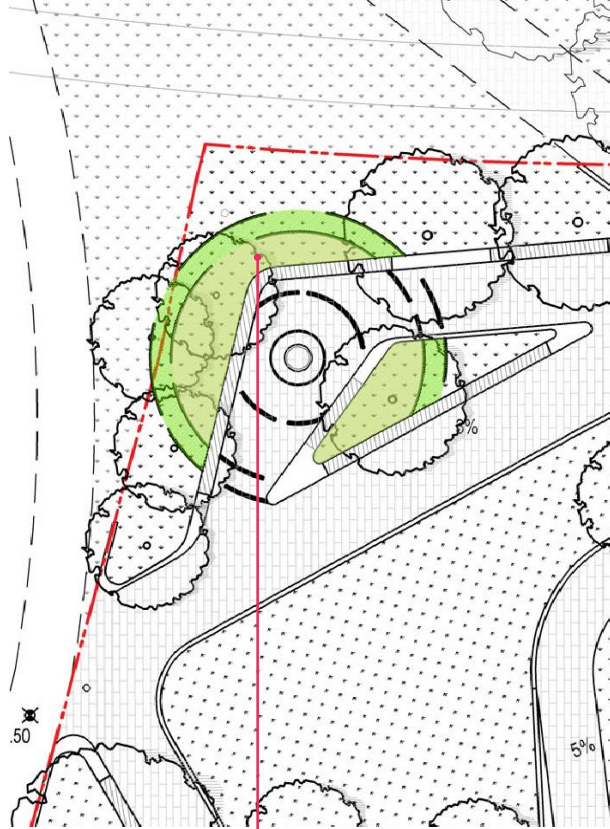
Texture and material indicate
indigenous art



Detailed paving pattern

Landscape Design

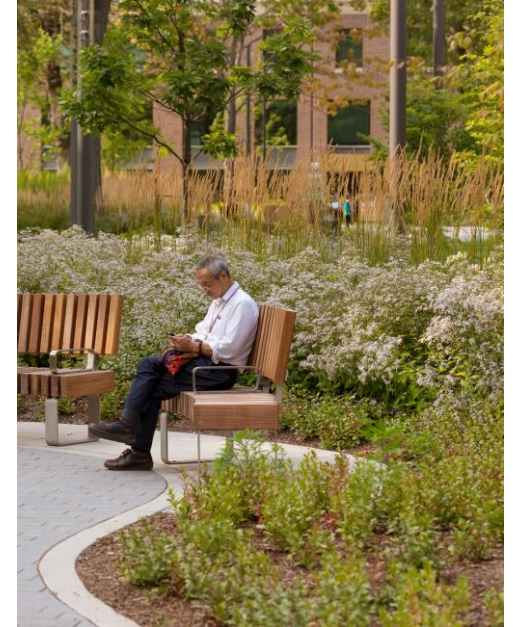
Gathering Circle



Layered planting with indigenous planting species



Precedents: layered planting



Planting Strategies: Planting Palette

SPRING / SUMMER

* NOTE: PLANT SPECIES TRADITIONALLY USED BY LOCAL FIRST NATIONS

TREES



SUGAR MAPLE* RIVER BIRCH* SERVICE BERRY* EVERGREEN FIR

SHRUBS



CORNUS SPS* FOTHERGILLA MYRICA RHUS AROMATICA*



ILEX VERTICILLATA* HAMAMELIS VIRGINIANA* TAXUS X MEDIA

GRASS/ GROUND COVER/ PERENNIALS



CALAMAGROS- DESCHAMPSIA FILIPENDULA WHITE ASTER*



ECHINACEA* ANEMONE CANADENSIS* ARTEMESIA LUDOVICIANA* ACHILLEA MILLEFOLIUM*

FALL / WINTER

TREES



SUGAR MAPLE RIVER BIRCH SERVICE BERRY EVERGREEN FIR

SHRUBS



CORNUS SERICEA MYRICA PENSYL- RHUS AROMATICA FOTHERGILLA

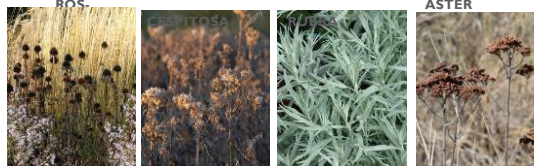


ILEX VERTICILLATA HAMAMELIS VIRGINIANA TAXUS X MEDIA-SIFORMIS

GRASS/ GROUND COVER/ PERENNIALS



CALAMAGROS- DESCHAMPSIA FILIPENDULA WHITE ASTER



ECHINACEA ANEMONE CANADENSIS ARTEMESIA LUDOVICIANA ACHILLEA MILLEFOLIUM

Landscape Design

Planting Strategies

1.

West Entries *Scale and Colour*

- Trees that are an appropriate compliment to the scale and massing of the building.
- Focal point for distant views and provide a 'gateway'.

2.

Gathering Circle + Greenway edge

Density and Texture

- Mix of smaller scale trees to support an intimate garden space.
- Coniferous trees that provide an evergreen buffer from the adjacent lot.
- Multi-stem woodland flowering trees that provide a lightly veiled canopy, filtered views out to the greenway and an appropriate transition species to blend into naturalized greenway planting.

3.

Terrace *Colour and Scale*

- Evergreen species and deciduous material with seasonal interest to ensure views out from the library provide year round interest.
- Appropriate scale of tree to ensure views out are not compromised.

4.

Southeast Entry *Scale and Density*

- Trees that are an appropriate compliment to scale and massing of the building.
- A robust understory of planting that creates an urban edge and is suitable for providing screening.

5.

Plaza Entry and Street Edge *Density and Colour*

- Flowering trees to frame stairs to create a welcoming entrance as well as provide seasonal interest.
- Evergreen trees to provide buffer from street and building.

6.

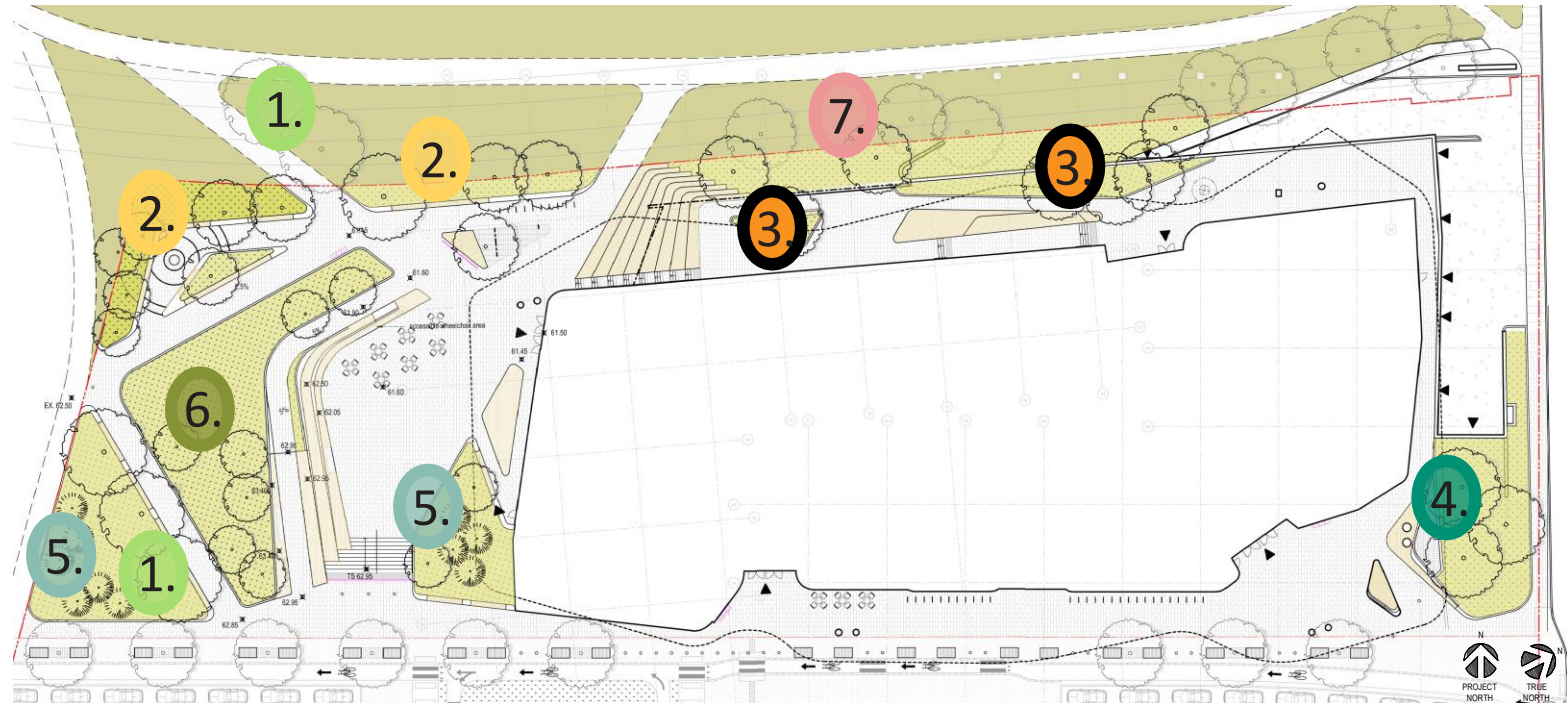
Lawn *Texture and Density*

- Open lawn to provide occupied green space.
- Informal tree planting for shade and seasonal interest.

7.

Berm and Greenway transition *Texture and Density*

- Informal grouping of trees and naturalized grass planting to transition to greenway.



Landscape Design

Planting Strategies – Example

1. West Entries *Scale and Colour*



2. Gathering Circle + Greenway edge *Density and Texture*

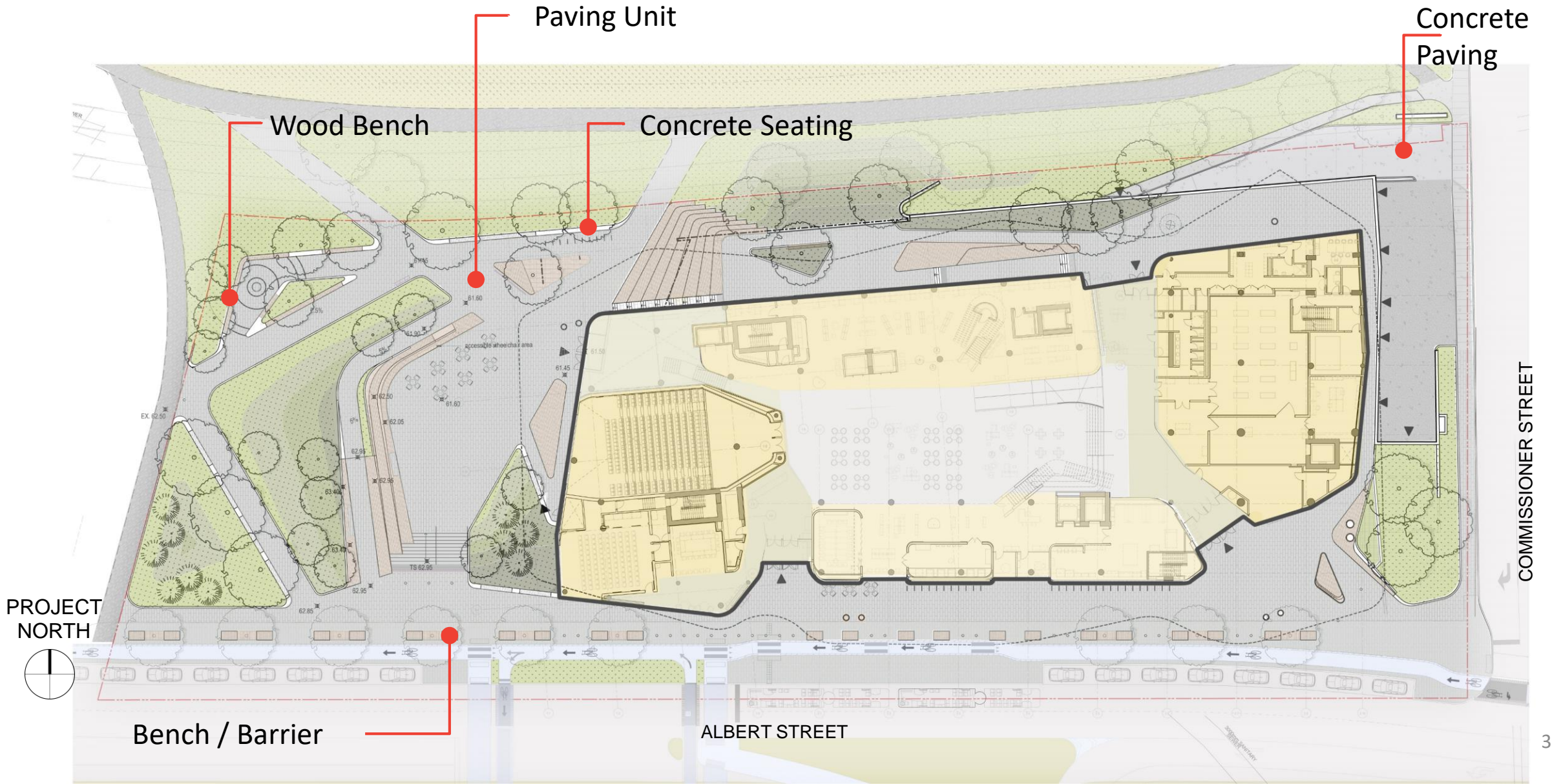


4. Southeast Entry *Scale and Density*



Landscape Design

Paving Materials



Pathways Converge - Entrances and Townhall



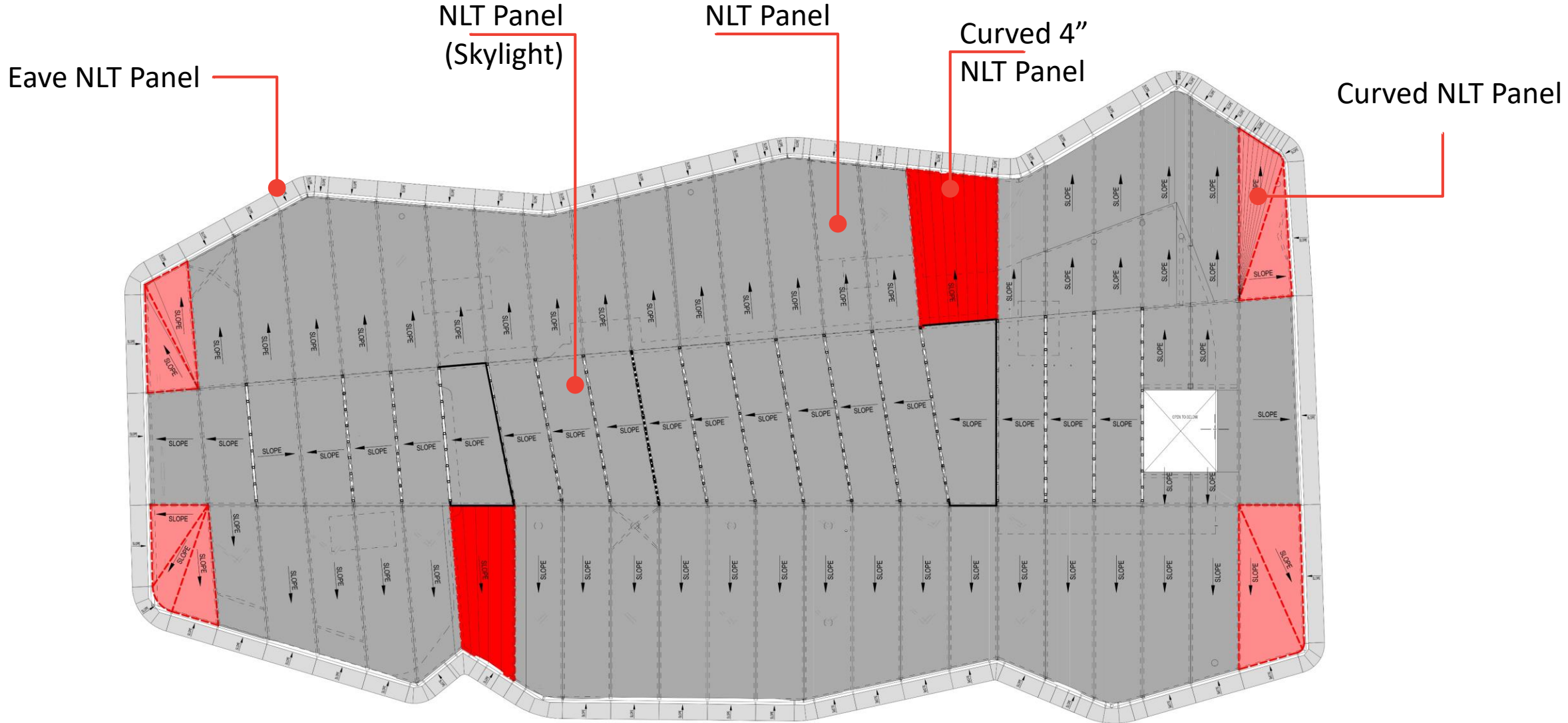
Pathways Converge - 'Artwork Integrated into Feature Columns'



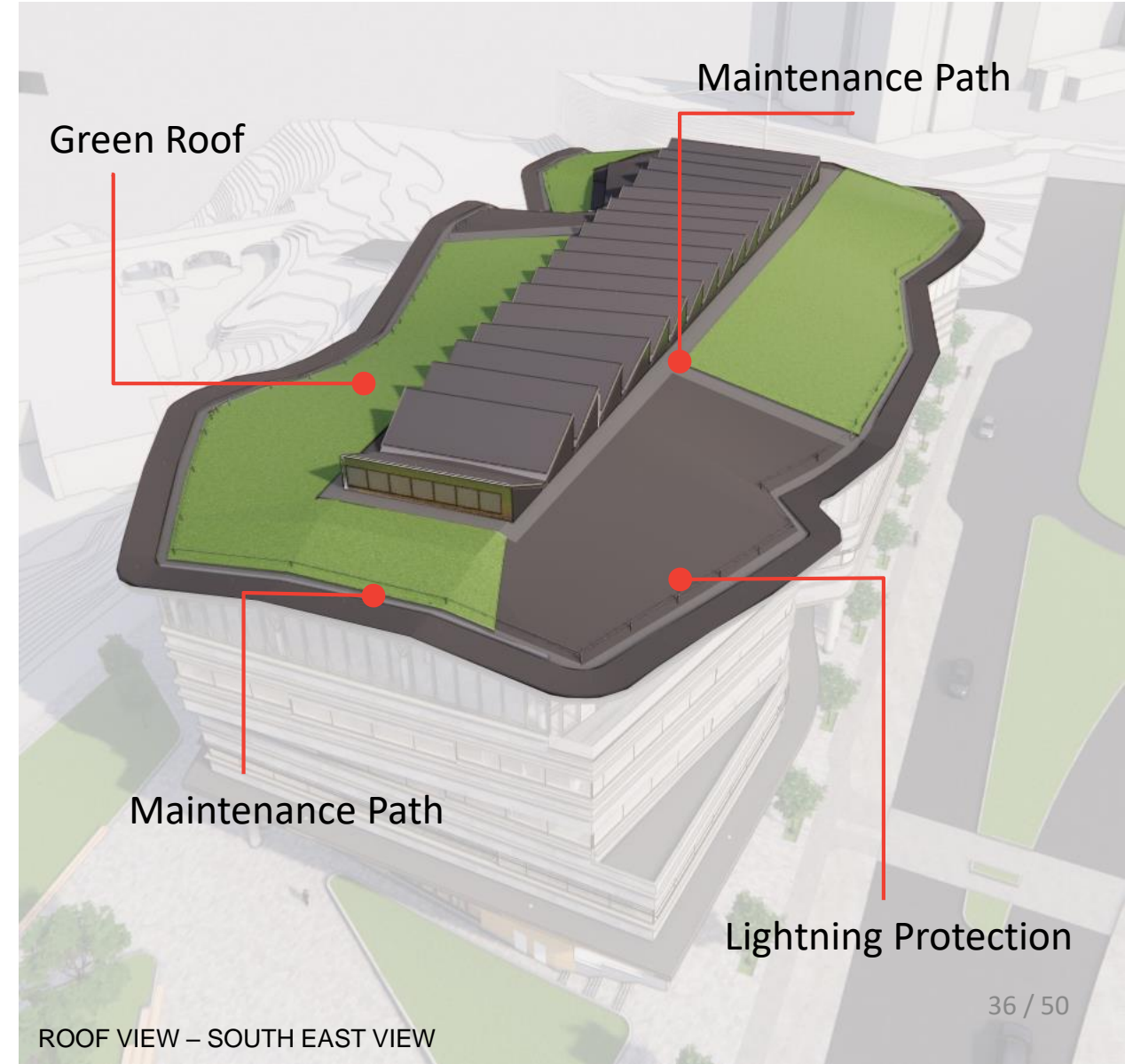
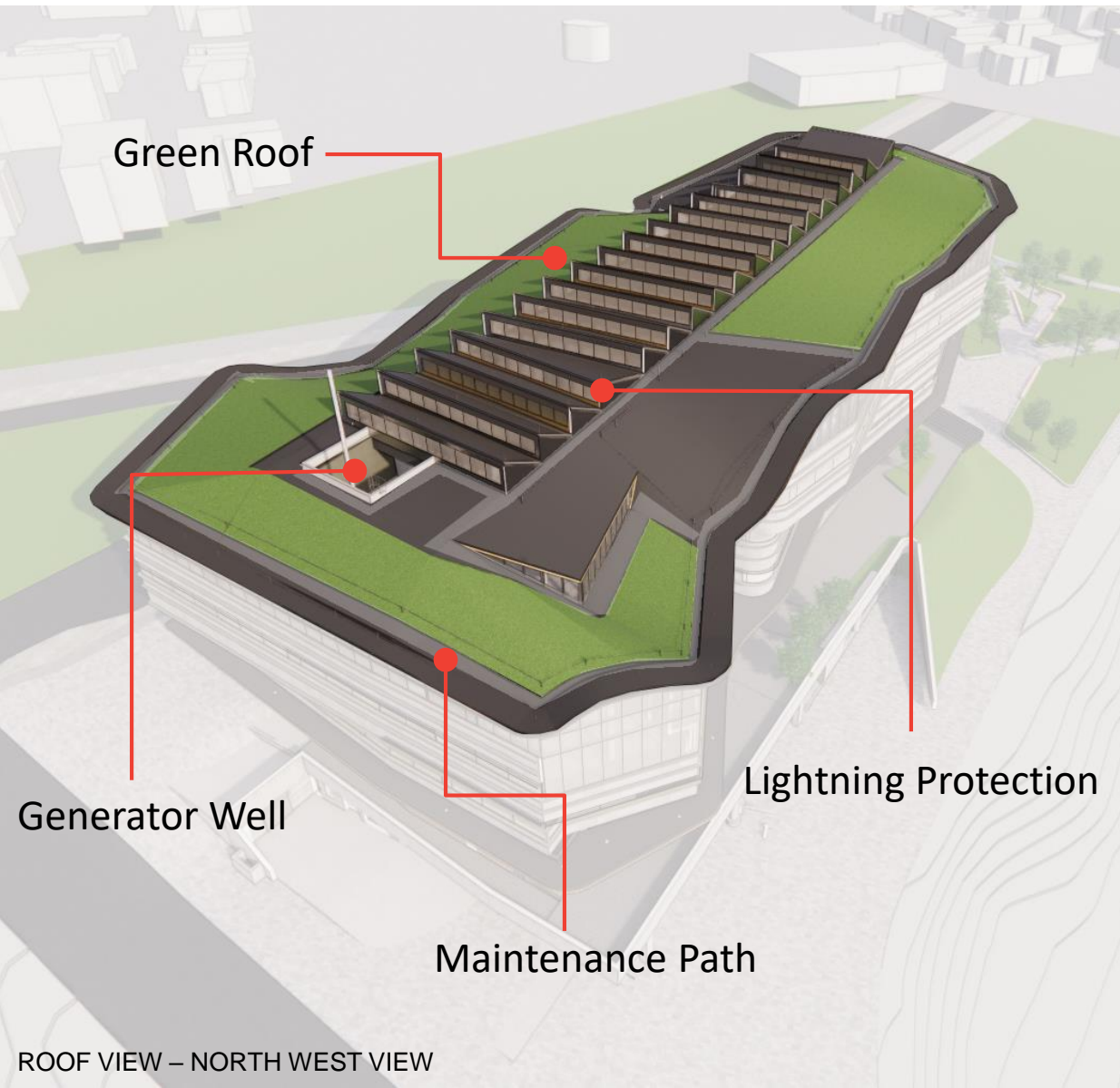
Integration of Roof Architecture



Structural Roof Panels



Integration of Roof Infrastructure and Equipment



Building Design

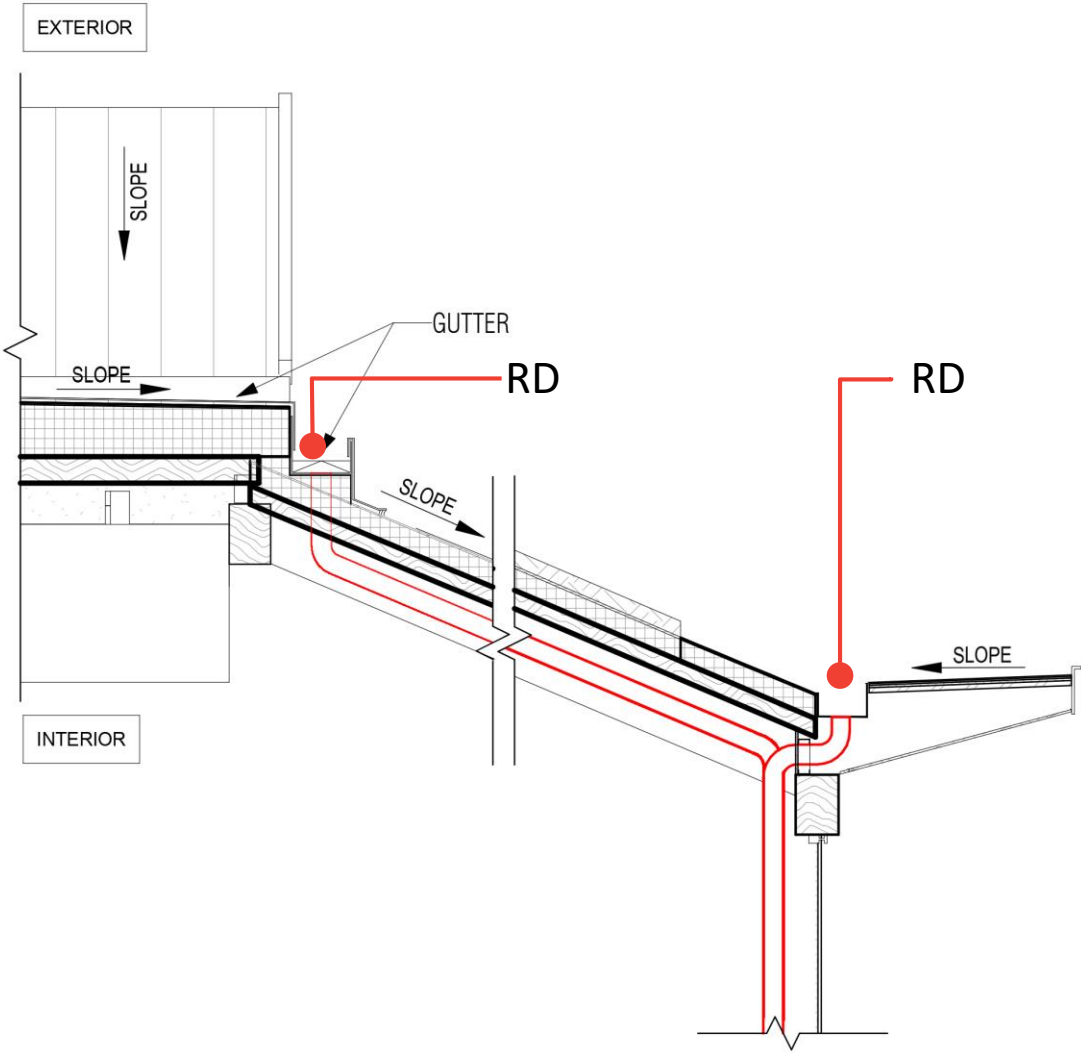
Roof Drainage Strategy



PROJECT
NORTH



ROOF PLAN



WALL SECTION

Building Design Continuity and Differentiation



Material Palette and Structural Elements



Terrace Seating

Pimisi Entrance

Multipurpose Room

Amphitheatre Benches



Covered Area

Waiting Area

Bike Parking

Café



Book Return

Retail

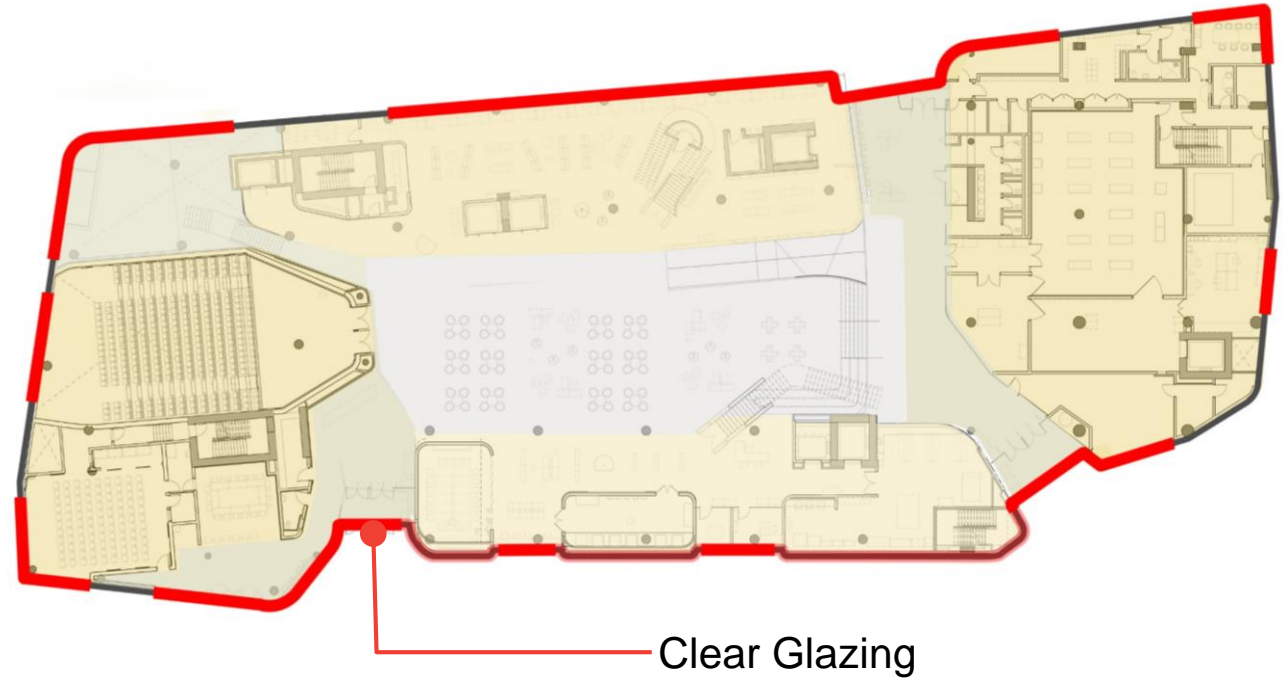
Curbside Bench

Drop Off

ZOOMED VIEW INTO ALBERT ENTRANCE

Building Design

Level 1 Transparency



Community Hub and Gathering Spaces



TOWNHALL LOOKING FROM MULTIPURPOSE ROOM



LEVEL 3 – CREATIVE STUDIO



LEVEL 2 – CHILDREN'S ALCOVE



PIMISI ENTRANCE – AMPHITHEATRE AREA

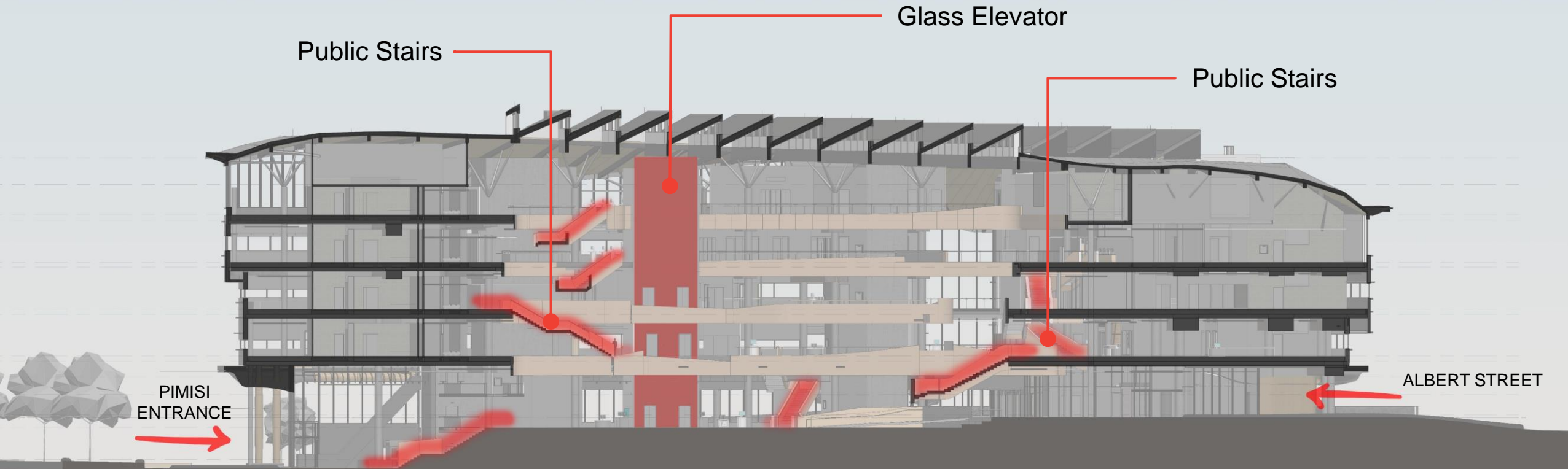


MULTIPURPOSE ROOM

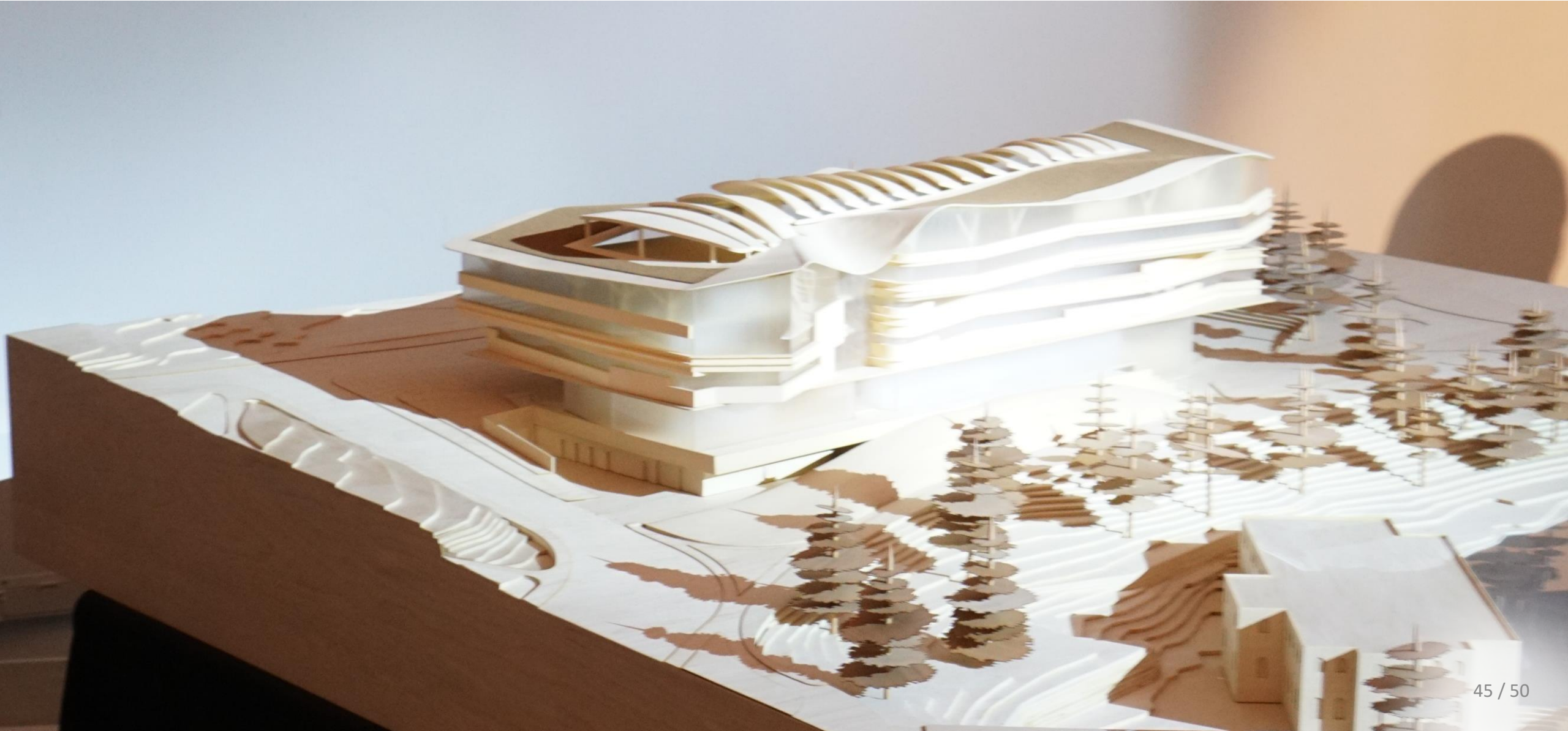


LAC READING ROOM

Clarity of Vertical Circulation



Explanation of Architect's Approach



Indigenous Design Features

Level 1

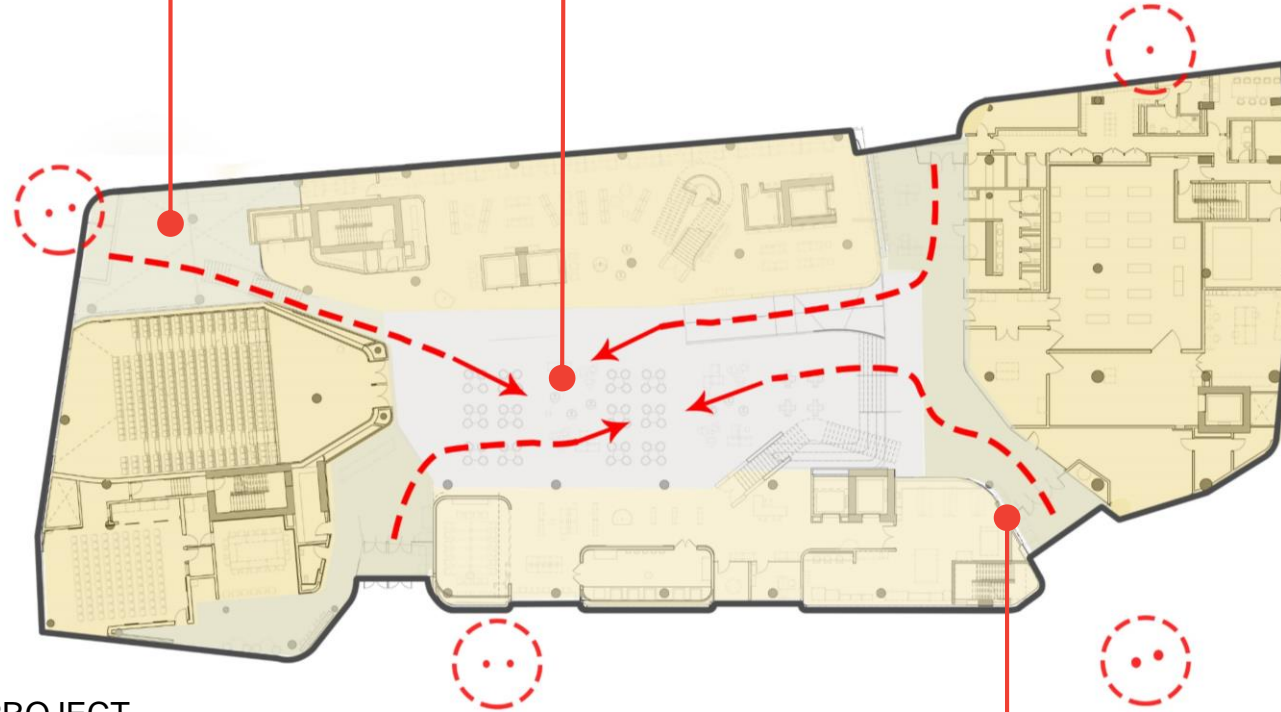


Pimisi entry lobby (level p1)
wall-mounted artwork

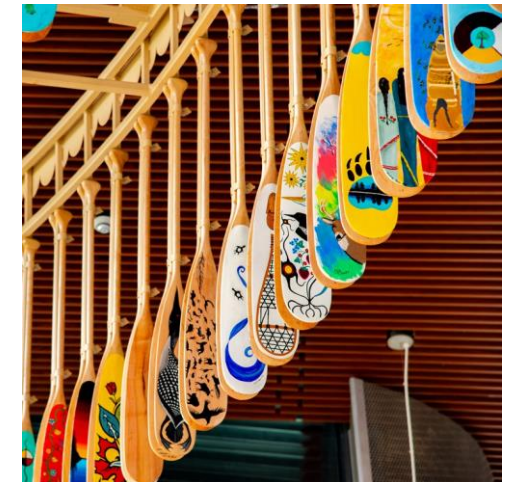
- Town Hall
- or other interior locations (levels 1-5)
- *free-standing artwork(s)*



PROJECT
NORTH

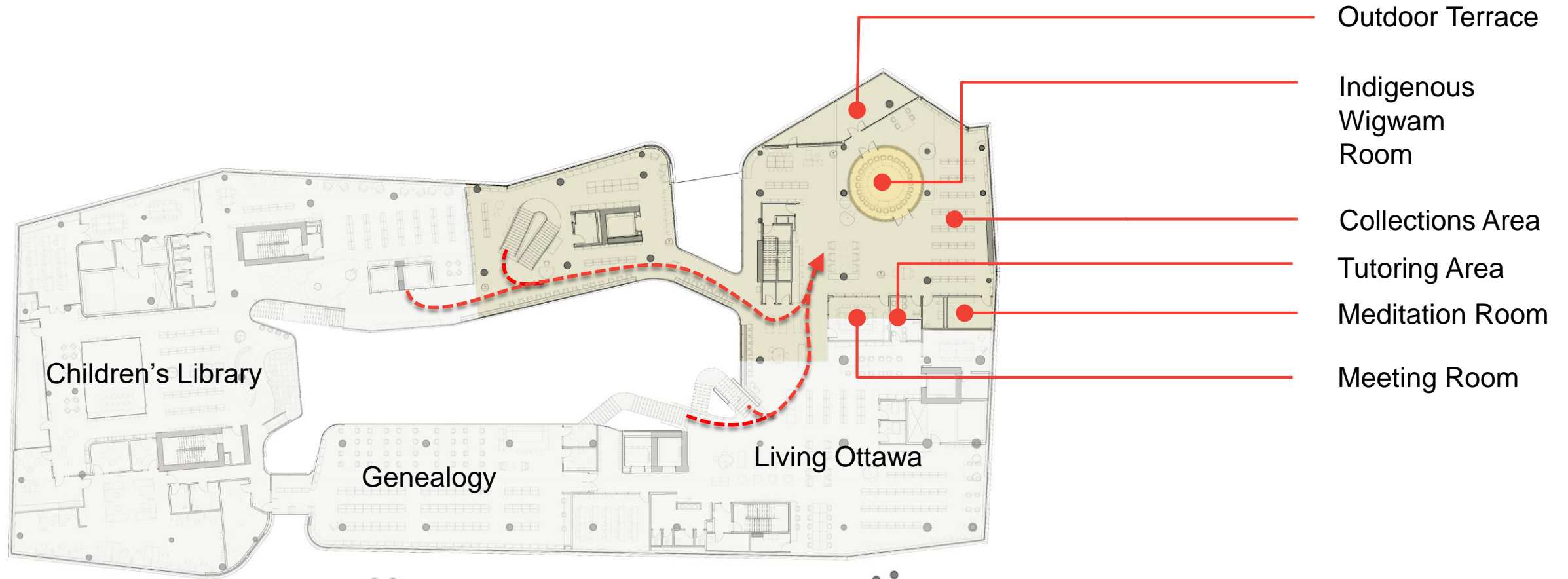


Indigenous Heritage
Recognition



Indigenous Design Features

Level 2



PROJECT
NORTH



Indigenous Design Features Wigwam Interior



Sustainable Design

Base Design LEED GOLD

- Efficient Energy Performance
- Local Resourced Materials
- 60/40 Wall to Glazing Proportion

Exploring NET ZERO CARBON

- Roof Mounted PV
- Triple Glazing
- Airtight Insulated Envelope

Next Steps

JDPR August 2020

City Building Permit Pre-consultation Q2-Q4 2020

Early Works and Site Preparation Q4 2020

City Building Permit Application Q1 2021

Start of Construction Q2 2021

Ready for Use / Open to the Public 2024

Official Public Opening 2025