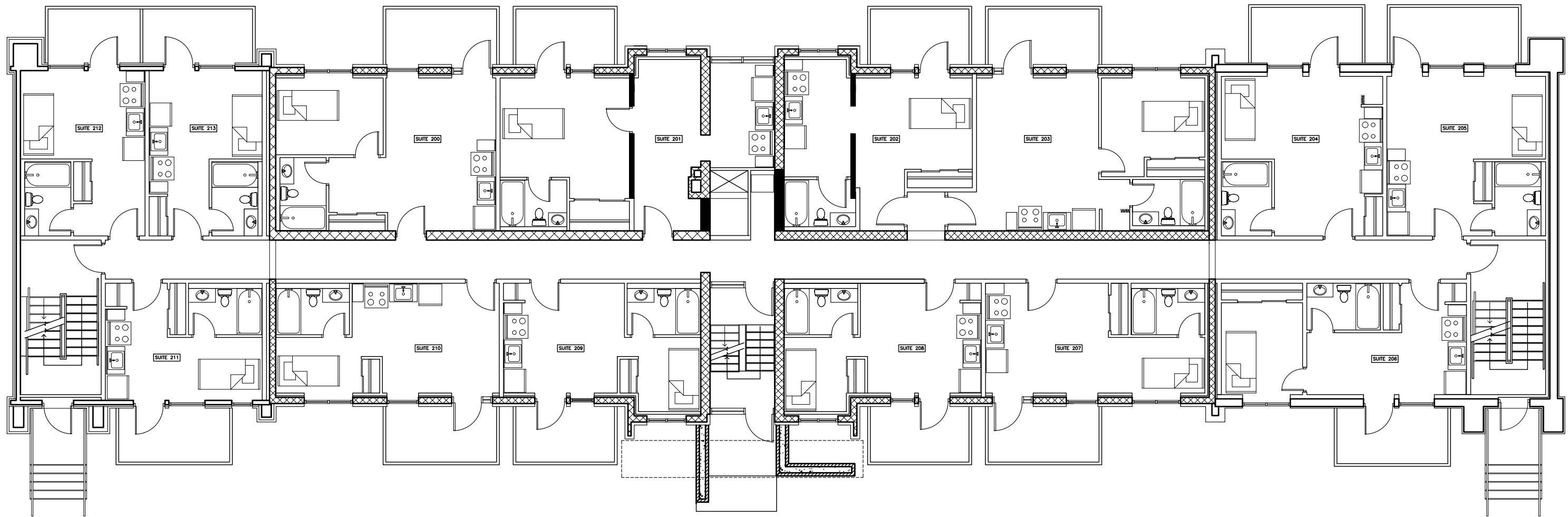


1 BASEMENT PLAN
 A1 N.T.S

P R T Y PYE & RICHARDS - TEMPRANO & YOUNG ARCHITECTS INC. <small>824 Meath St. Suite 200 613.724.7700</small> <small>Ottawa, ON K1Z 6E8 info@prtyca</small>	DATE:	PROJECT TITLE:	DRAWING TITLE:		PROJECT No:	DRAWING No:
	SCALE: AS NOTED	630 CUMMINGS AVENUE	BASEMENT PLAN		19004	A1
	DRAWN BY:					
	CHECKED BY:					
			1	ISSUE/PURPOSE	YYYY.MM.DD	
			REV		DATE	

THIS DRAWING IS THE EXCLUSIVE PROPERTY OF TEMPRANO & YOUNG ARCHITECTS INC. COPYRIGHT RESERVED. THIS DRAWING SHALL NOT BE USED FOR CONSTRUCTION UNLESS STAMPED AND SIGNED BY THE ARCHITECT. CONTRACTOR TO VERIFY ALL DIMENSIONS AND NOTIFY THE ARCHITECT OF ANY DISCREPANCIES. DO NOT SCALE DRAWINGS.



1 FIRST FLOOR PLAN
 A2 N.T.S

P R PYE & RICHARDS -
T Y TEMPRANO & YOUNG
 ARCHITECTS INC.
 824 Meath St. Suite 200 613.724.7700
 Ottawa, ON K1Z 6E8 info@prtyca

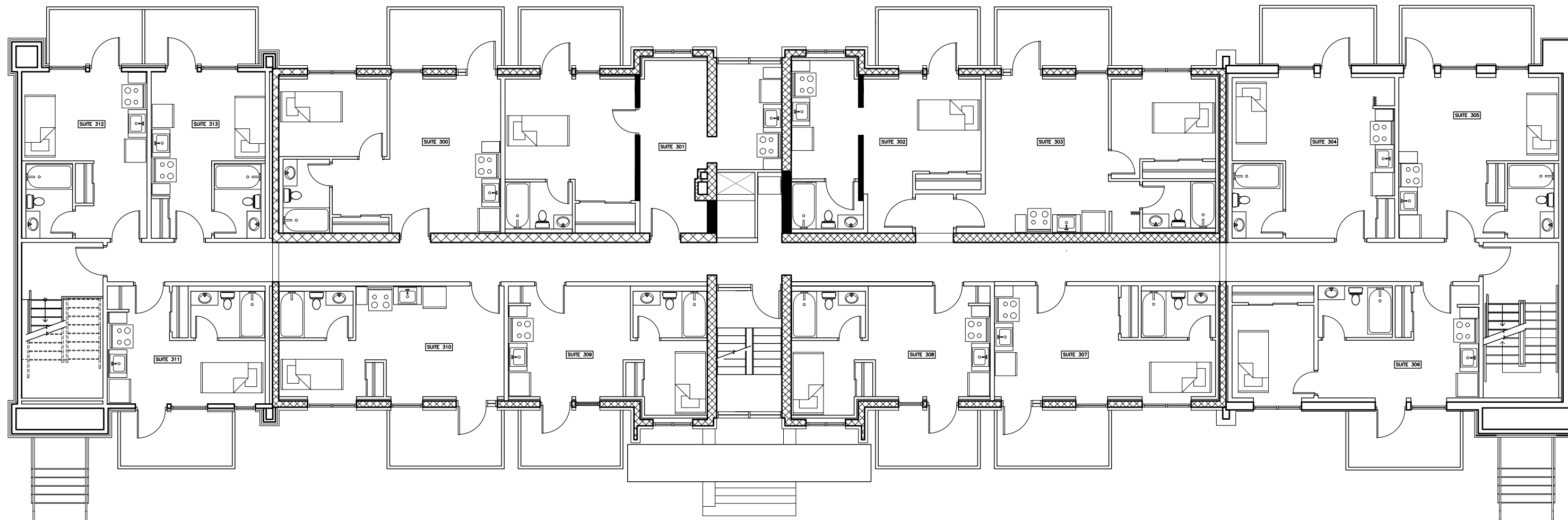
DATE:
 SCALE: AS NOTED
 DRAWN BY:
 CHECKED BY:

PROJECT TITLE:
 630 CUMMINGS AVENUE

DRAWING TITLE:
 FIRST FLOOR PLAN

1	ISSUE/PURPOSE	YYYY.MM.DD
REV		DATE

PROJECT No: 19004
 DRAWING No: A2



1 SECOND FLOOR PLAN
 A3 N.T.S

P R PYE & RICHARDS -
T Y TEMPRANO & YOUNG
 ARCHITECTS INC.

824 Meath St. Suite 200 413. 724. 7700
 Ottawa, ON K1Z 6E8 info@prty.ca

DATE:
 SCALE: AS NOTED
 DRAWN BY:
 CHECKED BY:

PROJECT TITLE:
 630 CUMMINGS AVENUE

DRAWING TITLE:
 SECOND FLOOR PLAN

1	ISSUE/PURPOSE	YYYY.MM.DD
REV		DATE

PROJECT No: 19004
 DRAWING No: A3