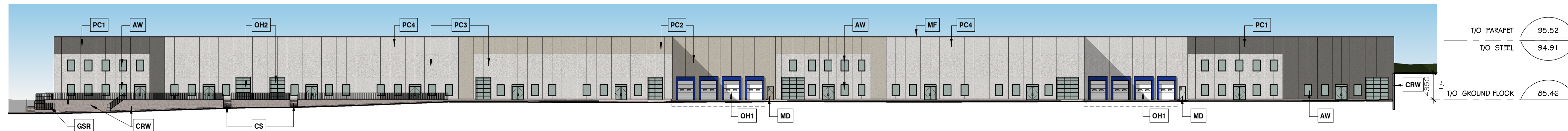


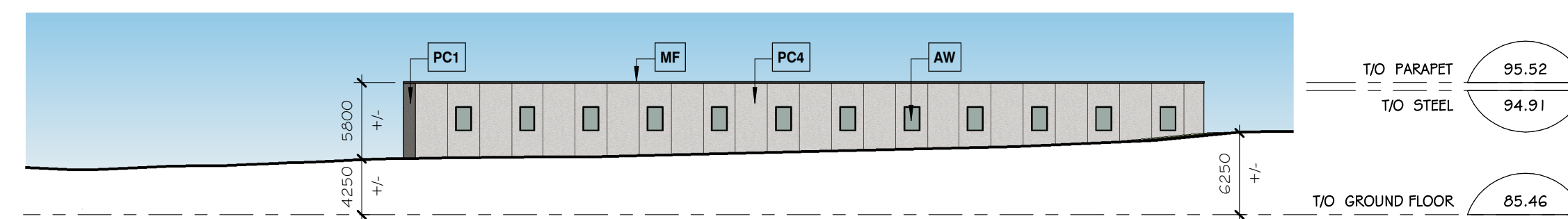
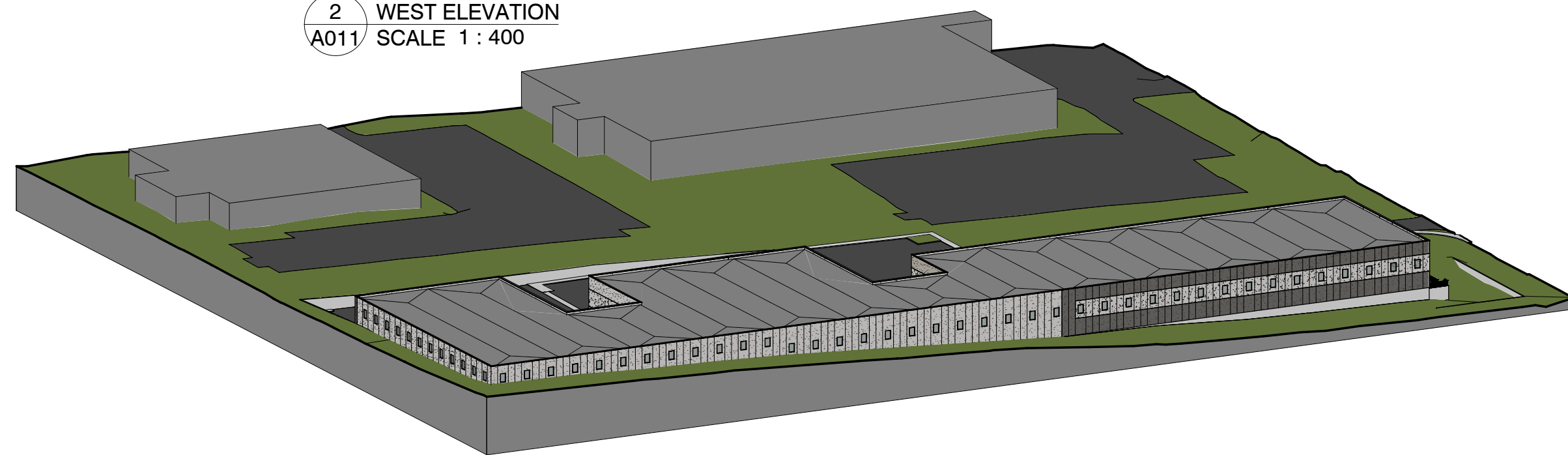
1 NORTH ELEVATION
A011 SCALE 1 : 400

T/O PARAPET 95.52
T/O STEEL 94.91
T/O GROUND FLOOR 85.46



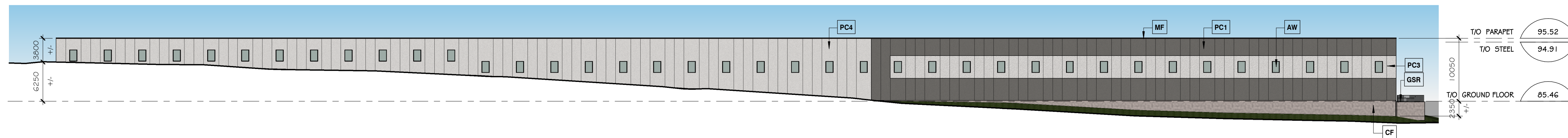
2 WEST ELEVATION
A011 SCALE 1 : 400

T/O PARAPET 95.52
T/O STEEL 94.91
T/O GROUND FLOOR 85.46



3 SOUTH ELEVATION
A011 SCALE 1 : 400

T/O PARAPET 95.52
T/O STEEL 94.91
T/O GROUND FLOOR 85.46



4 EAST ELEVATION
A011 SCALE 1 : 400

T/O PARAPET 95.52
T/O STEEL 94.91
T/O GROUND FLOOR 85.46

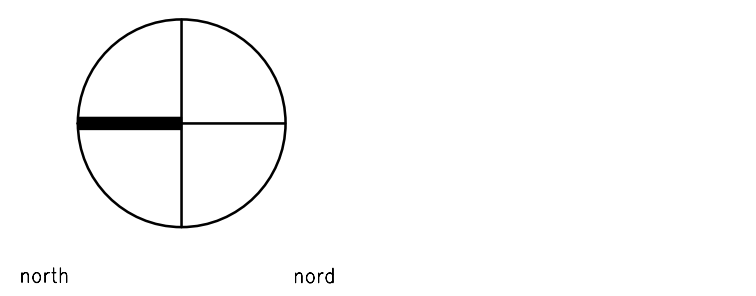


ELEVATION NOTES	
Note #	Note Text
AW	Clear Anodized Aluminum Window, with Clear Glass
CF	Concrete Foundation Wall
CRW	Concrete Retaining Wall
CS	Concrete Stair
GSR	Galvanized Steel Guardrail
MD	Painted Hollow-Metal Door & Steel Frame, colour matching adjacent siding colour
MF	Prefinished Metal Parapet Cap Flashing, dark grey colour
OH1	Solid, Prefinished, Insulated Overhead Door, complete weather seal, dock bumper and dock leveler
OH2	Glazed Overhead Door in Clear Anodized Aluminum Frame
PC1	Precast Concrete, Light Sandblast Finish, stained charcoal
PC2	Precast Concrete, Light Sandblast Finish, stained stone grey
PC3	Precast Concrete, Heavy Sandblast Finish, natural grey
PC4	Precast Concrete, Light Sandblast Finish, natural grey

NOTES:

Contractor shall check and verify all dimensions on site and report any discrepancies to the Architect before proceeding.

no.	revision	date
2	RESPONSE TO PLANNING COMMENTS	16 JUL 2020
1	RESPONSE TO PLANNING COMMENTS	12 MAY 2020
0	ISSUED FOR SITE PLAN APPROVAL	13 FEB 2020



383 Parkdale Avenue, Suite 201
Ottawa Ontario Canada K1Y 4R4
KWC ARCHITECTS INC.
PHONE (613) 238-2117
FAX (613) 238-6595
E MAIL kwc@kwc-arch.com

detail no. 1 detail no.
sheet no. A1 feuille no.

project
project

PROPOSED WAREHOUSE
1243 TERON RD.
OTTAWA, ON.

designed by compo par KWC approved by
drawn by dessin par AK project no. 1943
date 04 MARCH 2020 scale as noted
drawing / dessin

BUILDING ELEVATIONS

sheet no. **A011**
no. de la feuille #18115

plot scale 1:1