

1 LANDSCAPE PLAN
L1 1:300

PRELIMINARY
NOT FOR CONSTRUCTION

DO NOT SCALE DRAWINGS;

NOTES ARE APPLICABLE TO ALL DRAWINGS IN THE SET;

Fotenn Consultants Inc. IS NOT RESPONSIBLE FOR ACCURACY OF BASE INFORMATION;

REFER TO CIVIL ENGINEERING DRAWINGS FOR GRADING & SITE SERVICING INFORMATION;

THE CONTRACTOR IS RESPONSIBLE FOR CONFIRMING SITE CONDITIONS AND REPORTING ANY DISCREPANCIES TO THE LANDSCAPE ARCHITECT;

THE CONTRACTOR IS RESPONSIBLE FOR CONFIRMING EXACT LOCATIONS OF ALL UNDERGROUND SERVICES AND OBTAINING CLEARANCE FROM ALL APPLICABLE UTILITIES. PROPOSED WORKS FOUND TO BE IN CONFLICT WITH UNDERGROUND SERVICES MAY BE ADJUSTED AT THE DIRECTION OF THE LANDSCAPE ARCHITECT;

LANDSCAPE ELEMENTS SHOWN ARE SUBJECT TO THE FINAL LOCATION OF UNDERGROUND SERVICES AND UTILITIES;

DO NOT INSTALL TREES ON PROPERTY / LOT LINES OR WITHIN DRAINAGE EASEMENTS;

PERFORM WORK IN ACCORDANCE WITH DETAILS AND SPECIFICATIONS;

ALL PLANT MATERIAL SHALL BE No. 1 NURSERY STOCK AND SHALL MEET OR EXCEED THE SPECIFICATION OF THE Canadian Standards for Nursery Stock, AS PUBLISHED BY THE Canadian Nursery Landscape Association;

SPECIES SUBSTITUTIONS ARE NOT PERMITTED WITHOUT PRIOR WRITTEN APPROVAL OF THE LANDSCAPE ARCHITECT;

ALL UN-PAVED SURFACES TO RECEIVE 135mm DEPTH TOPSOIL & SOD.

STANDARDS FOR TREE PLANTING:

NO PLANTING ON CORNERS OR ANYWHERE WHERE IT WOULD CREATE A SIGHT LINE CONCERN;

MAINTAIN A MINIMUM DISTANCE OF 4.0m FROM ALL BUILDINGS;

MAINTAIN A MINIMUM DISTANCE OF 2.5m FROM THE CURB FOR DECIDUOUS TREES AND 4.5m FOR CONIFEROUS TREES;

MAINTAIN A MINIMUM DISTANCE OF 1.5m FOR DECIDUOUS (4.5m FOR CONIFERS) FROM ANY SIDEWALK OR PRIVATE WALKWAY;

MAINTAIN A MINIMUM DISTANCE OF 1.2m FROM ALL DRIVEWAYS;

MAINTAIN A MINIMUM DISTANCE OF 2.5m FROM COMMUNITY MAILBOXES, LIGHT STANDARDS, FIRE HYDRANTS AND NO PLANTING IN FRONT OF HYDRANTS;

MAINTAIN A MINIMUM DISTANCE OF 3.0m FROM ALL HYDRO TRANSFORMERS;

MAINTAIN A MINIMUM DISTANCE OF 1.0m FROM ALL UNDERGROUND SERVICES;

MAINTAIN A MINIMUM DISTANCE OF 1.0m FROM ALL BELL AND CABLE BOXES;

MAINTAIN A MINIMUM DISTANCE OF 10.0 FROM BUS SHELTERS

IMPORTANT NOTICE FOR CONTRACTOR:

THE CITY OF OTTAWA REQUIRES A Certificate of Completion (F1) Landscape Works TO BE SUBMITTED AND SEALED BY THE LANDSCAPE ARCHITECT. CONTRACTORS ARE RESPONSIBLE FOR FAMILIARIZING THEMSELVES WITH THE REQUIREMENTS OF THIS PROCESS AND PROVIDING SUFFICIENT NOTICE TO THE LANDSCAPE ARCHITECT TO CONDUCT SITE REVIEWS DURING INSTALLATION OF TREES. THE 1 YEAR WARRANTY PERIOD SHALL NOT COMMENCE UNTIL THE LANDSCAPE ARCHITECT HAS SUBMITTED THE F1 Certificate.

PRIOR TO INSTALLATION OF TREES, THE DEVELOPER WILL CONTACT THE PLANNING AND GROWTH MANAGEMENT AND FORESTRY SERVICES TO REVIEW THE SPECIES AND LOCATION OF TREES.

TREE AND SHRUB PLANTING SCHEDULE				
KEY	QTY.	BOTANICAL NAME	COMMON NAME	SIZE / CONDITION / SPACING
DECIDUOUS TREES				
AR	2	Acer rubrum 'Armstrong'	Armstrong Red Maple	70mm cal. / W.B.
CO	-	Celtis occidentalis	Common Hackberry	70mm cal. / W.B.
GT	2	Gleditsia triacanthos var. inermis	Honeylocust	60mm cal. / W.B.
MR	8	Malus 'Royalty'	Royalty Flowering Crabapple	50mm cal. / W.B.
MS	7	Malus 'Snowdrift'	Snowdrift Crabapple	50mm cal. / W.B.
PC	-	Pyrus calleryana 'Chanticleer'	Chanticleer Callery Pear	50mm cal. / W.B.
QRF	-	Quercus robur 'Fastigiata'	Pyramidal English Oak	70mm cal. / W.B.
QR	3	Quercus rubra	Red Oak	70mm cal. / W.B.
SR	-	Syringa reticulata	Japanese Tree Lilac	50mm cal. / W.B. (tree form)
UA	2	Ulmus americana 'Princeton'	Princeton Elm	70mm cal. / W.B.
	24			
CONIFEROUS TREES				
PG	4	Picea glauca	White Spruce	175cm ht. / W.B.
PO	5	Picea omorika	Serbian Spruce	175cm ht. / W.B.
PP	5	Picea pungens	Colorado Spruce	200cm ht. / W.B.
PS	2	Pinus strobus	Eastern White Pine	250cm ht. / W.B.
TO	6	Thuja occidentalis	Eastern White Cedar	175 cm ht. / clump, field dug
	22			
SHRUBS				
Cr	26	Cornus racemosa	Gray Dogwood	80cm ht. / specimen quality / 1.75m sp.
Cs	6	Cornus sericea	Red Osier Dogwood	80cm ht. / specimen quality / 1.75m sp.
Csf	6	Cornus sericea 'Flaviramea'	Yellow Twig Dogwood	80cm ht. / specimen quality / 1.75m sp.
Fo	59	Forsythia ovata 'Ottawa'	Early Forsythia	60cm ht. / specimen quality / 1.0m sp.
Pm	28	Pinus mugo	Mugo Pine	#3 Pot / 1.5m sp.
Rr	18	Rosa rugosa	Rugosa Rose	#3 Pot / 100cm sp.
Sv	55	Spiraea vanhouttei	Bridalwreath Spirea	50cm ht. / 1.5m sp.
	198			

APPROVED TREES IN R.O.W.			
AC	1	Amelanchier canadensis	Serviceberry
CC	1	Carpinus caroliniana	Blue Beech
GT	5	Gleditsia triacanthos var. inermis 'Imperial'	Imperial Honeylocust
GD	5	Gymnocladus dioica 'Espresso'	Espresso Kentucky Coffee Tree
MC	3	Maackia amurensis 'Magnificent'	Amur Maackia
OV	8	Ostrya virginiana	Ironwood
TC	3	Tilia cordata 'Summer Sprite'	Summer Sprite Linden
	26		

Copyright Reserved
The Copyrights to all designs and drawings are the property of Fotenn Consultants Inc. Unauthorized reproduction or use is forbidden. DO NOT SCALE DRAWING

Copyright réservés
Les droits d'auteur à tous les modèles et dessins sont la propriété de Fotenn Consultants Inc. Reproduction ou utilisation non autorisée est interdite. NE PAS L'ÉCHELLE DE Dessin

Client / Client



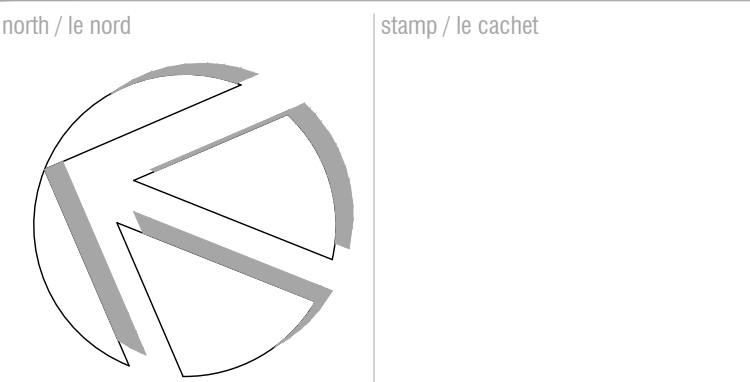
key plan / plan repère

legend / légende

- GD APPROVED TREES IN R.O.W. (BY OTHERS)
- XX SMALL DECIDUOUS TREE (REFER TO PLANTING SCHEDULE FOR SPECIES AND QUANTITIES)
- YY MEDIUM DECIDUOUS TREE (REFER TO PLANTING SCHEDULE FOR SPECIES AND QUANTITIES)
- ZZ LARGE DECIDUOUS TREE (REFER TO PLANTING SCHEDULE FOR SPECIES AND QUANTITIES)
- QQ CONIFEROUS TREES (REFER TO PLANTING SCHEDULE FOR SPECIES AND QUANTITIES)
- WW SHRUBS, PERENNIALS, AND ORNAMENTAL GRASSES IN MULCHED BEDS (REFER TO PLANTING SCHEDULE FOR SPECIES AND QUANTITIES)
- MAINTENANCE EDGE (REFER 5-L3)
- 1.5m HIGH ORNAMENTAL IRON FENCE
- BENCH - REFER SPECIFICATIONS
- LITTER RECEPTACLE ON CONCRETE PAD - REFER SPECIFICATIONS
- BIKE RACKS - REFER SPECIFICATIONS
- TABLE AND CHAIRS - REFER SPECIFICATIONS (BY OWNER)

01	issued for SPA - 1st submit	2020/07/02
00	issue for Client review	2020/06/18
rev'n	description / la description	yyyy/mm/dd

FOTENN Planning + Design
396 Cooper Street, Suite 300
Ottawa, ON, CANADA K2P 2H7
613.730.5709
fotenn.com



project / projet

REVERA LONG TERM CARE FACILITY - 850 CHAMPLAIN

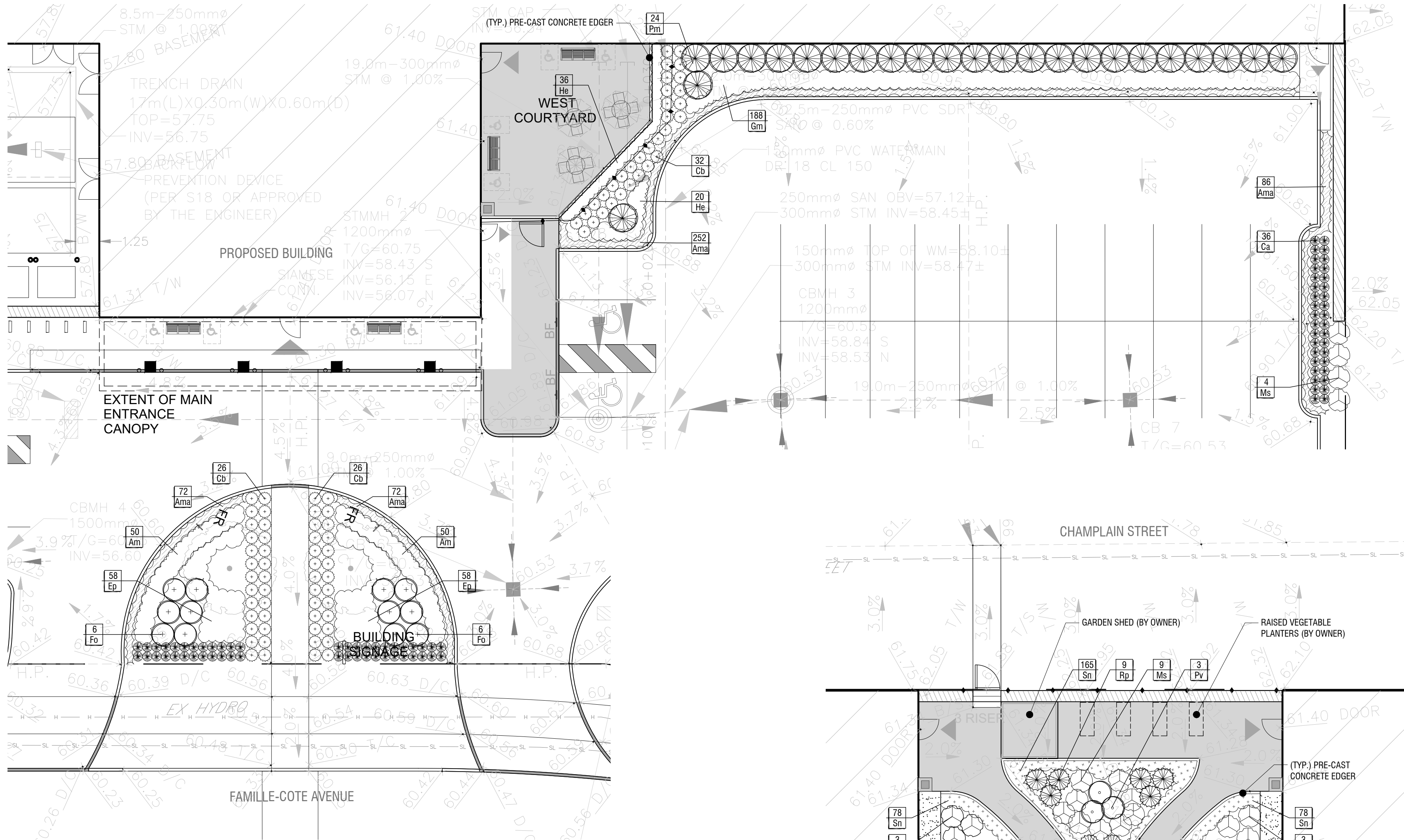
drawing / dessin

LANDSCAPE PLAN

designed / conçu	drawn / dessiné	reviewed / examiné
SP	SP	DF
date	project number / No. du projet	
February 2020		

drawing number / No. du dessin

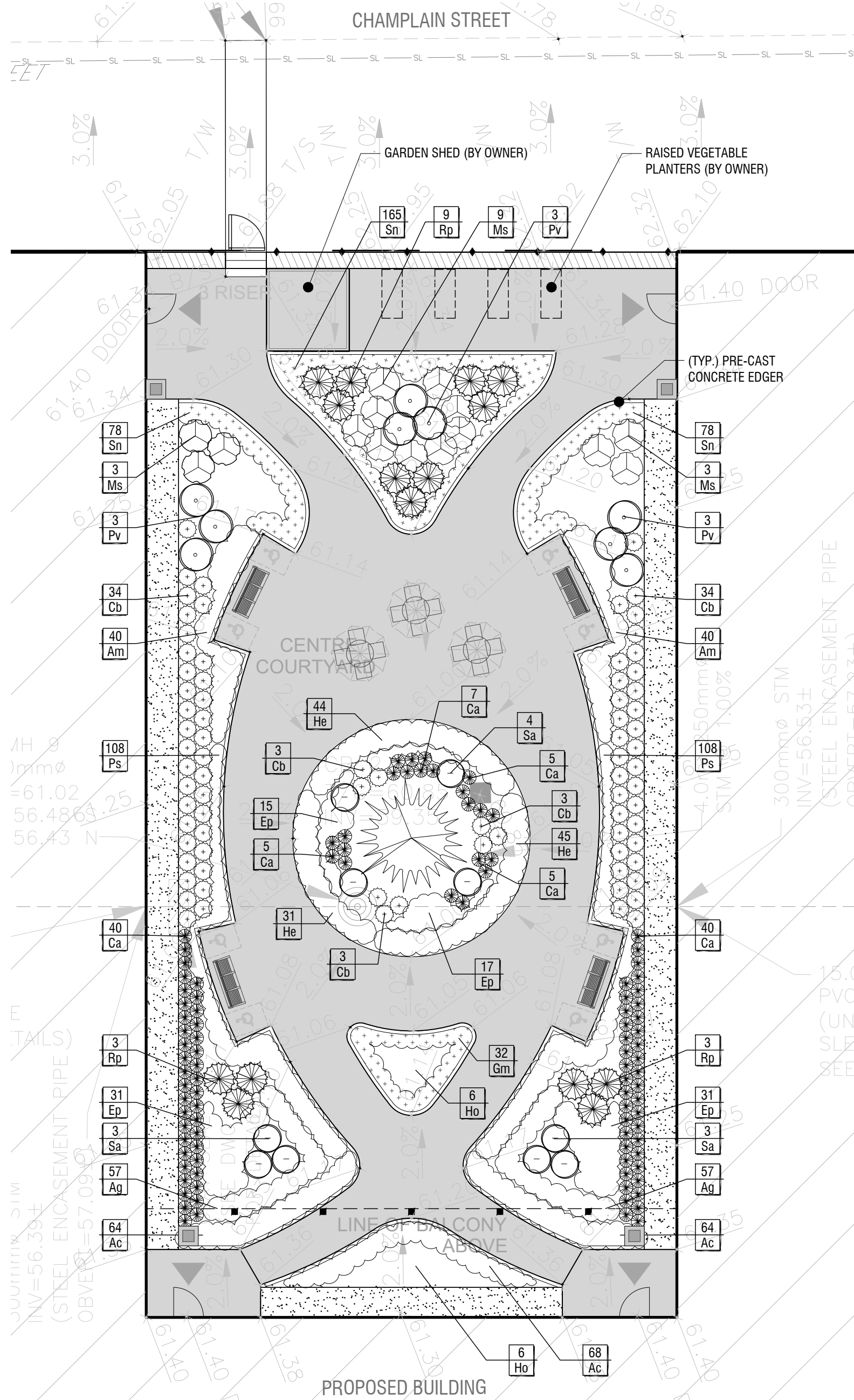
L1 of 3



1 FRONT ENTRANCE AND COURTYARD PLANTING PLAN
L2 1:150

SHRUB & PERENNIAL PLANTING SCHEDULE				
KEY	QTY.	BOTANICAL NAME	COMMON NAME	SIZE / CONDITION / SPACING
SHRUBS				
Gae	-	Cornus alba 'Elegantissima'	Silverleaf Dogwood	50cm ht. / specimen quality / 90cm sp.
Ea	-	Euonymus alatus 'Compacta'	Dwarf Burning Bush	60cm ht. / specimen quality / 90cm sp.
Fo	12	Forsythia ovata 'Ottawa'	Early Forsythia	60cm ht. / specimen quality / 100cm sp.
Pv	9	Philadelphus virginialis	Virginal Mockorange	#3 pot / 100cm sp.
Pm	24	Pinus mugo	Mugo Pine	#3 Pot / 1.5m sp.
Rp	15	Rhododendron 'P.J.M. Compact'	P.J.M. Compact Rhododendron	#2 pot / 100cm sp.
Sa	10	Symphoricarpos albus	Snowberry	50cm ht. / 90cm sp.
Sp	-	Syringa x prestoniae	Lilac	80cm ht. / specimen quality / 175cm sp.
	270			
PERENNIALS & GRASSES				
Am	180	Alchemilla mollis	Lady's Mantle	#1 Pot / 45cm o.c.
Ama	482	Armeria maritima	Sea Thrift	#1 Pot / 25cm o.c.
Ac	196	Astilbe chinensis	Chinese Astilbe	#1 Pot / 35cm o.c.
Ag	114	Athyrium x 'Ghost'	Japanese Painted Fern	#1 Pot / 35cm sp.
Ana	-	Aster novae-angliae	New England Aster	#1 Pot / 45cm o.c.
Ca	138	Calamagrostis acutiflora 'Overdam'	Variegated Reed Grass	#2 Pot / 50cm o.c.
Cb	161	Calamagrostis brachytricha	Korean Feather Reed Grass	#2 Pot / 70cm o.c.
Ep	210	Echinacea purpurea	Coneflower	#1 Pot / 45cm o.c.
Gm	220	Geranium macrorrhizum	Bigroot Geranium	#1 Pot / 45cm o.c.
He	176	Hemerocallis 'Stella D'oro'	Stella D'oro Daylily	#1 Pot / 45cm o.c.
Heu	-	Heuchera	Coral Bells	#1 Pot / 30cm o.c.
Ho	12	Hosta	Plantain Lily	#2 Pot / 75cm sp.
Ms	19	Miscanthus sinensis	Maiden Grass	#2 Pot / 100cm sp.
Pv	-	Panicum virgatum 'Heavy Metal'	Switch Grass	#2 Pot / 90cm sp.
Ps	216	Phlox subulata	Creeping Phlox	#1 Pot / 40cm o.c.
Sn	321	Salvia nemorosa	Meadow Sage	#1 Pot / 30cm o.c.
	2403			

PRELIMINARY
NOT FOR CONSTRUCTION



2 REAR COURTYARD PLANTING PLAN
L2 1:150

Copyright Reserved
The Copyrights to all designs and drawings are the property of Fotenn Consultants Inc. Unauthorized reproduction or use is forbidden. DO NOT SCALE DRAWING

Copyright réservés
Les droits d'auteur à tous les modèles et dessins sont la propriété de Fotenn Consultants Inc. Reproduction ou utilisation non autorisée est interdite. NE PAS L'ÉCHELLE DE DESSIN

Client / Client



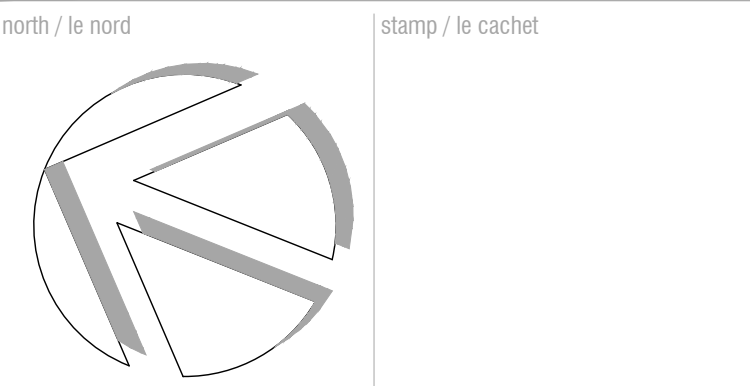
key plan / plan repère

legend / légende

- EXISTING TREES / TREES BY OTHERS
- SMALL DECIDUOUS TREE (REFER TO PLANTING SCHEDULE FOR SPECIES AND QUANTITIES)
- MEDIUM DECIDUOUS TREE (REFER TO PLANTING SCHEDULE FOR SPECIES AND QUANTITIES)
- LARGE DECIDUOUS TREE (REFER TO PLANTING SCHEDULE FOR SPECIES AND QUANTITIES)
- CONIFEROUS TREES (REFER TO PLANTING SCHEDULE FOR SPECIES AND QUANTITIES)
- SHRUBS, PERENNIALS, AND ORNAMENTAL GRASSES IN MULCHED BEDS (REFER TO PLANTING SCHEDULE FOR SPECIES AND QUANTITIES)
- MAINTENANCE EDGE (REFER 5-L3)
- 1.5m HIGH ORNAMENTAL IRON FENCE
- BENCH - REFER SPECIFICATIONS
- LITTER RECEPTACLE ON CONCRETE PAD - REFER SPECIFICATIONS
- BIKE RACKS - REFER SPECIFICATIONS
- TABLE AND CHAIRS - REFER SPECIFICATIONS (BY OWNER)

01	issued for SPA - 1st submit	2020/07/02
00	issue for Client review	2020/06/18
rev'n	description / la description	yyyy/mm/dd

FOTENN Planning + Design
396 Cooper Street, Suite 300
Ottawa, ON, CANADA K2P 2H7
613.730.5709
fotenn.com



project / projet

**REVERA LONG TERM CARE
FACILITY - 850 CHAMPLAIN**

drawing / dessin

DETAILED PLANTING PLANS

designed / conçu	drawn / dessiné	reviewed / examiné
SP	SP	DF
date	project number / No. du projet	
February 2020		
drawing number / No. du dessin		

L2 of 3



L3 of 3