

REVERA LONG TERM CARE BUILDING 850 CHAMPLAIN STREET



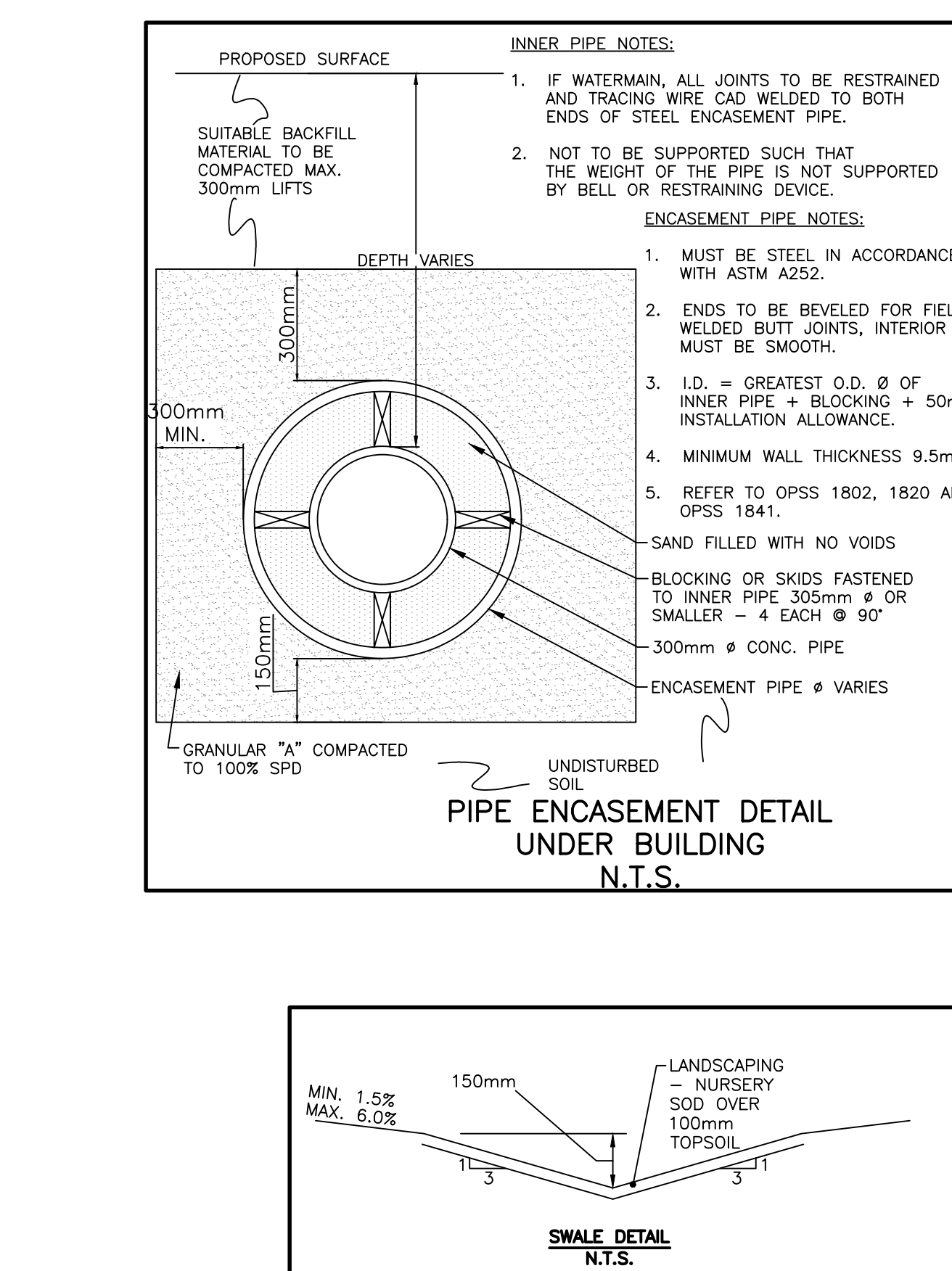
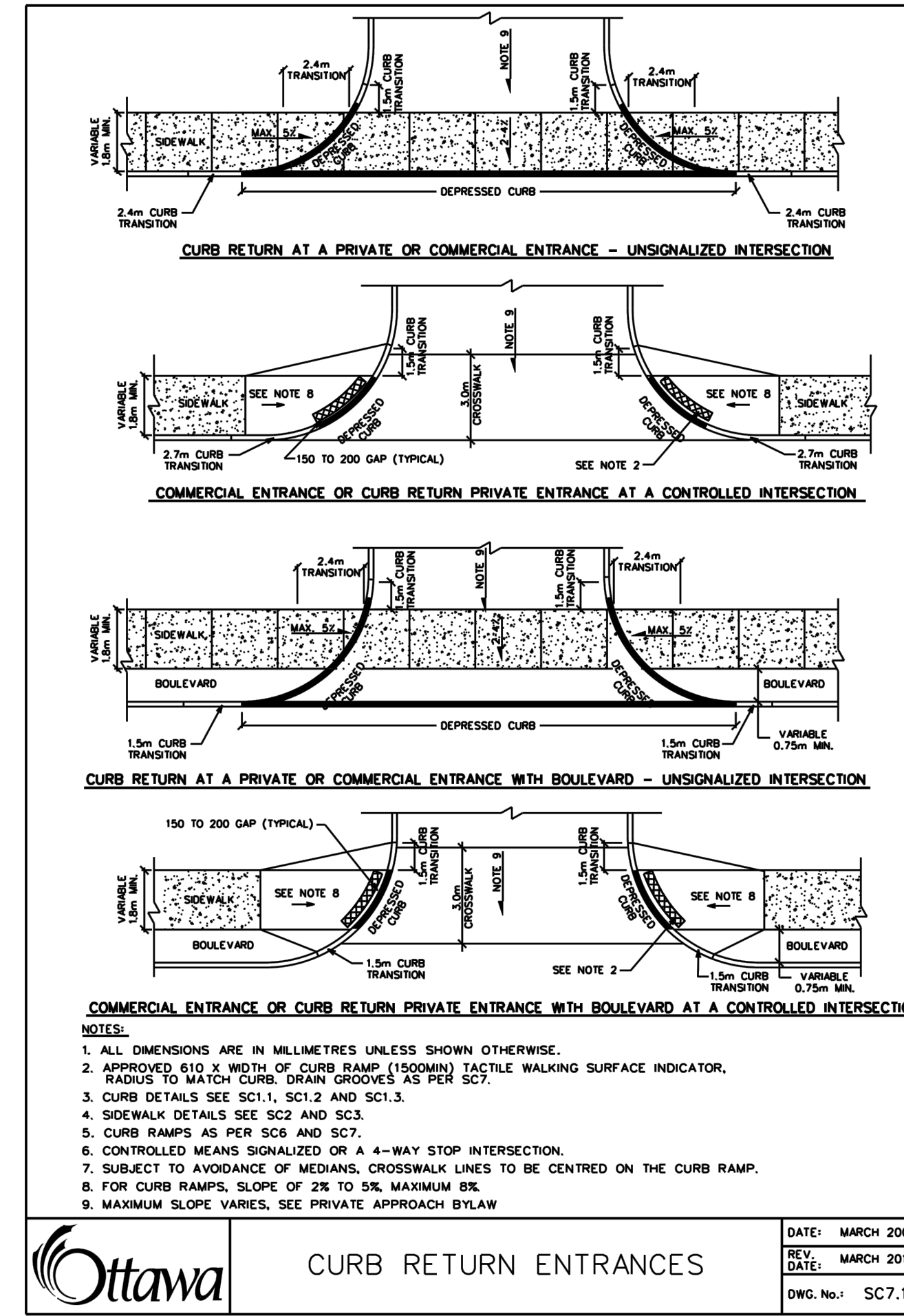
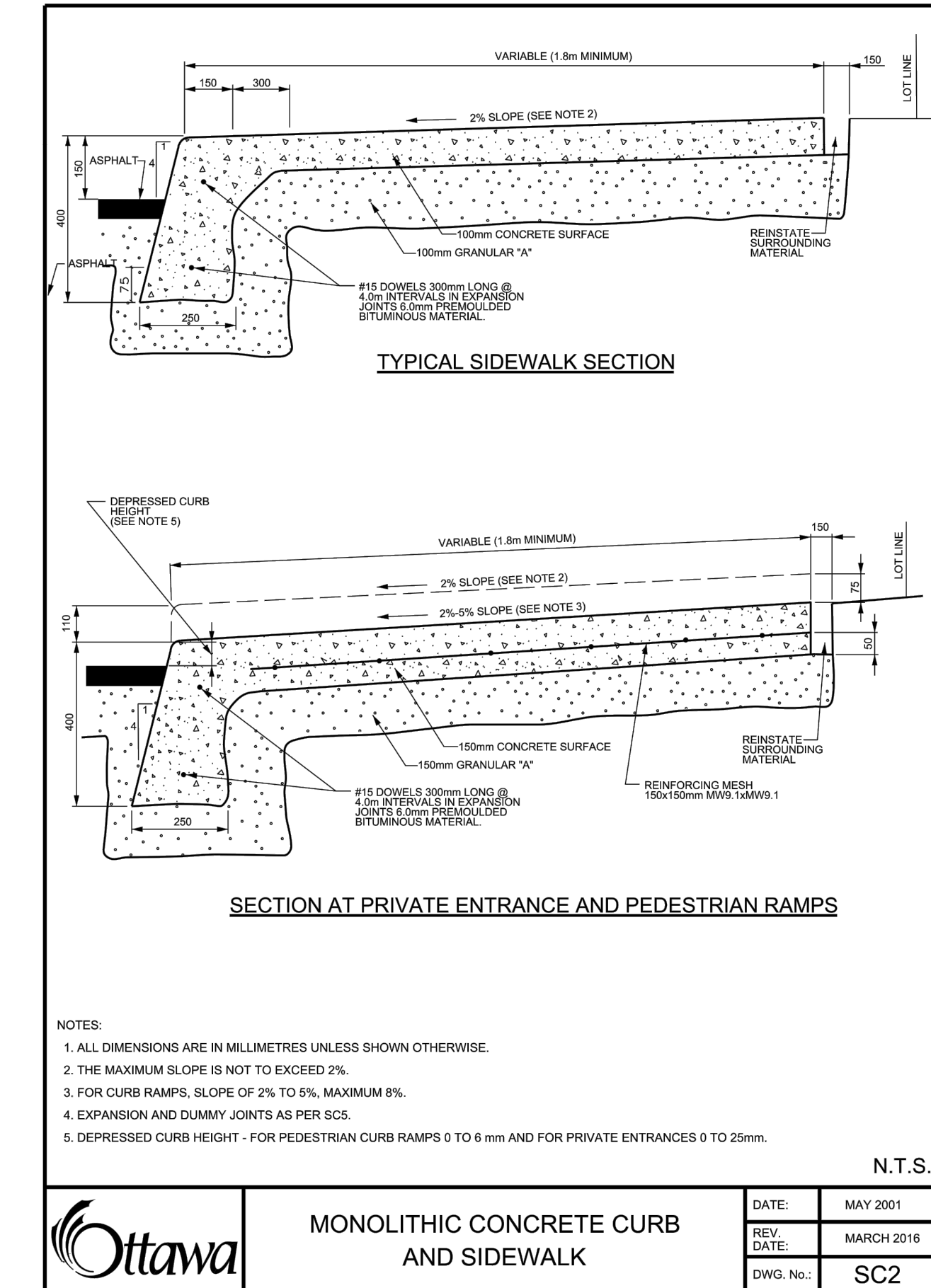
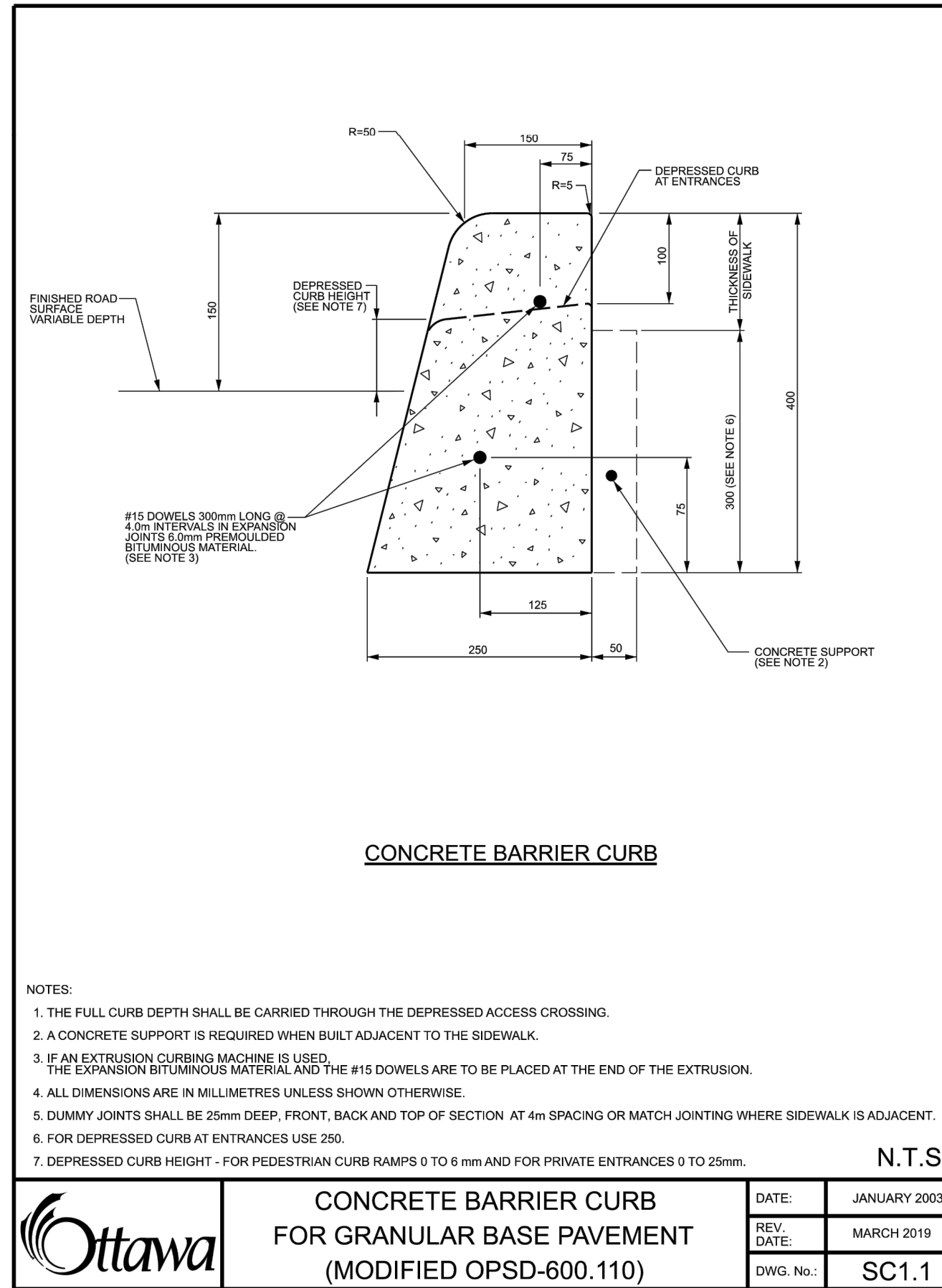
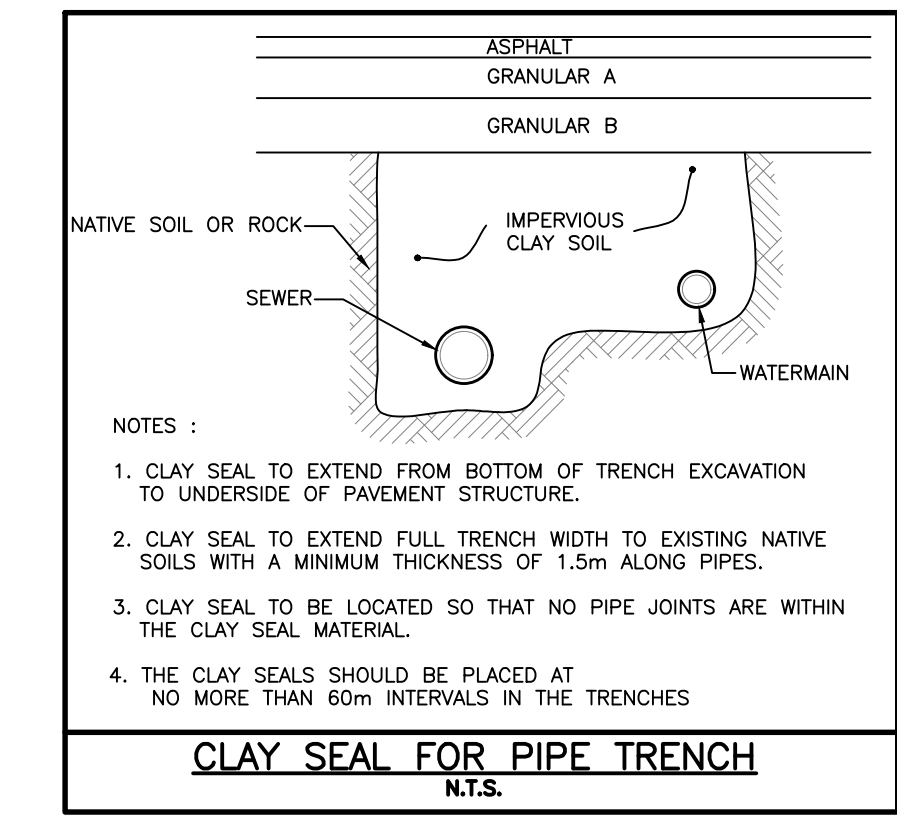
KEY MAP
SCALE: N.T.S.

INDEX

| | |
|----------------|-----------------------------------|
| 000-17004-COV | COVER |
| 001-17004-N1 | LEGEND, NOTES AND DETAILS |
| 002-17004-N2 | LEGEND, NOTES AND DETAILS |
| 003-17004-S1 | SITE SERVICING PLAN |
| 004-17004-GR1 | GRADING AND DRAINAGE PLAN |
| 005-17004-SC1 | EROSION AND SEDIMENT CONTROL PLAN |
| 006-17004-SWM1 | STORMWATER MANAGEMENT PLAN |



PROJECT NO. 17004
JUNE 30, 2020
CITY SPC SUBMISSION

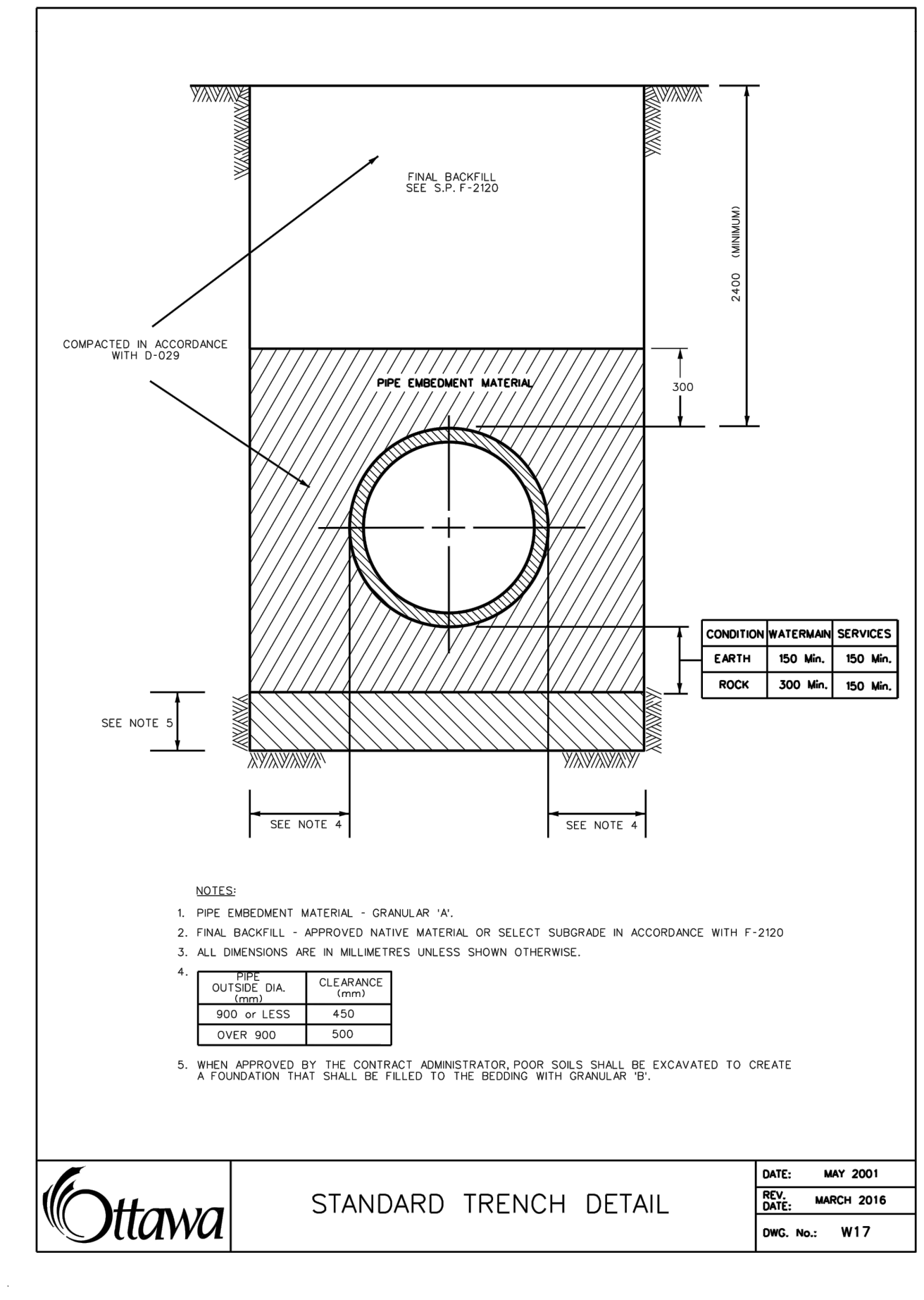
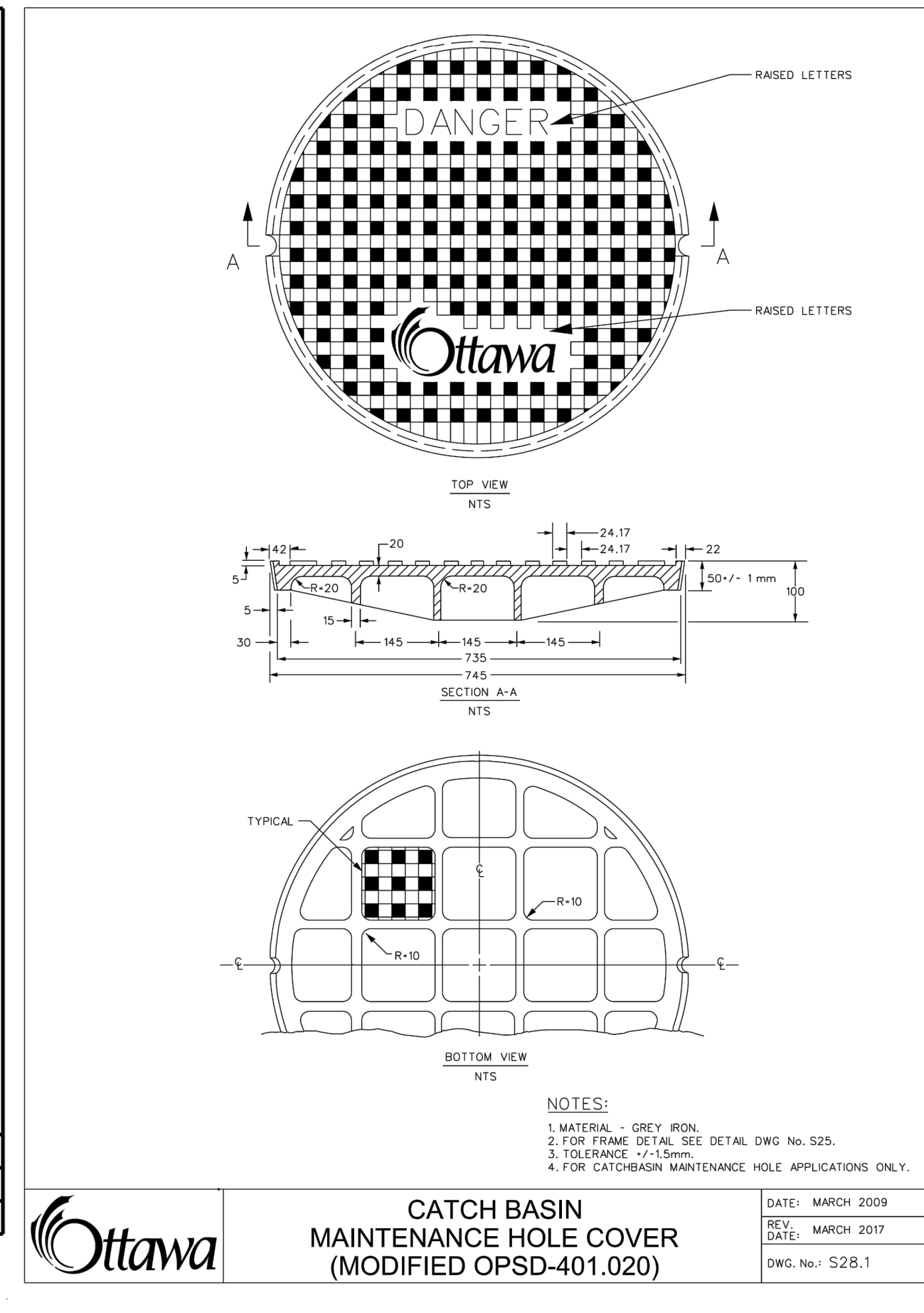
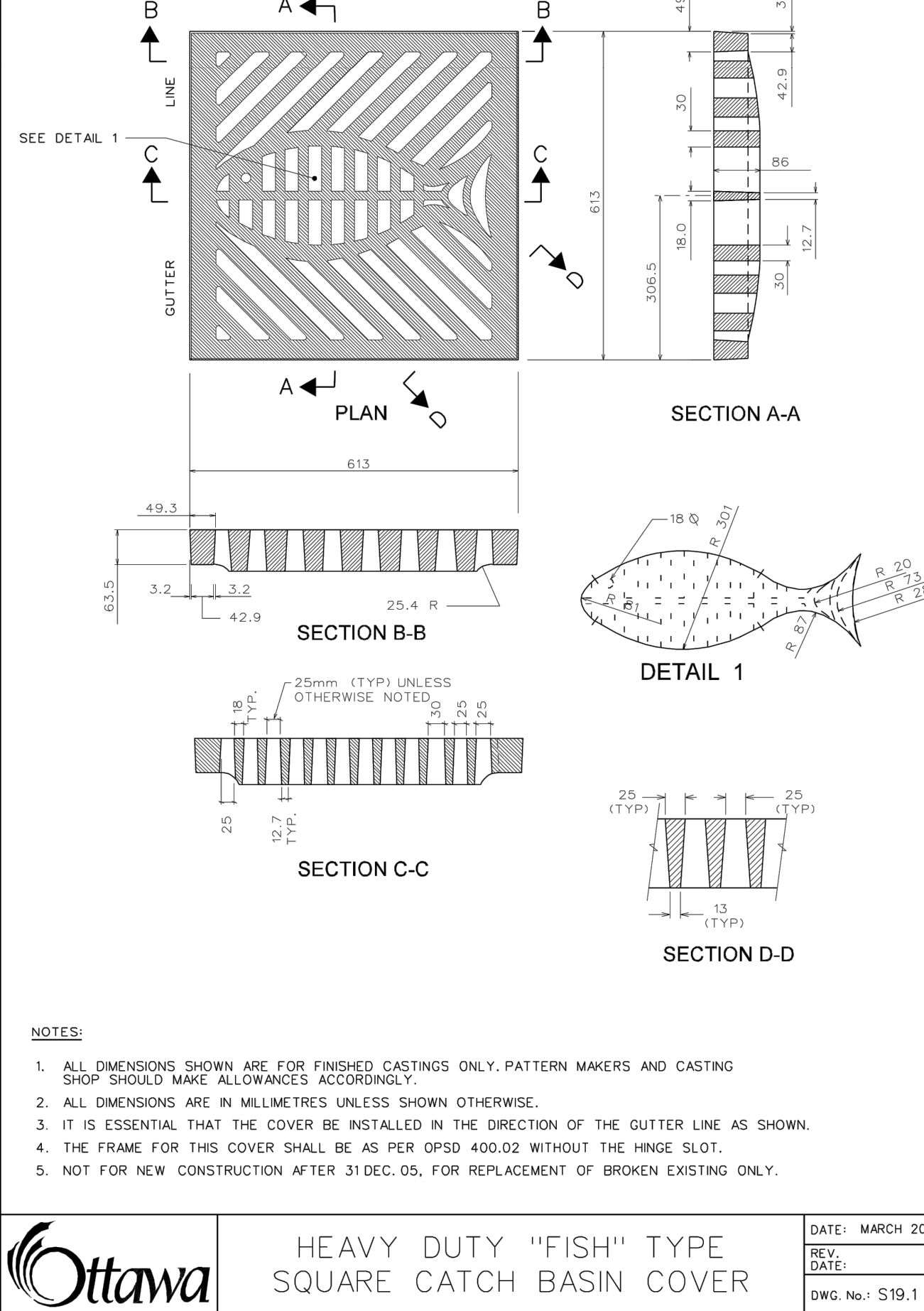
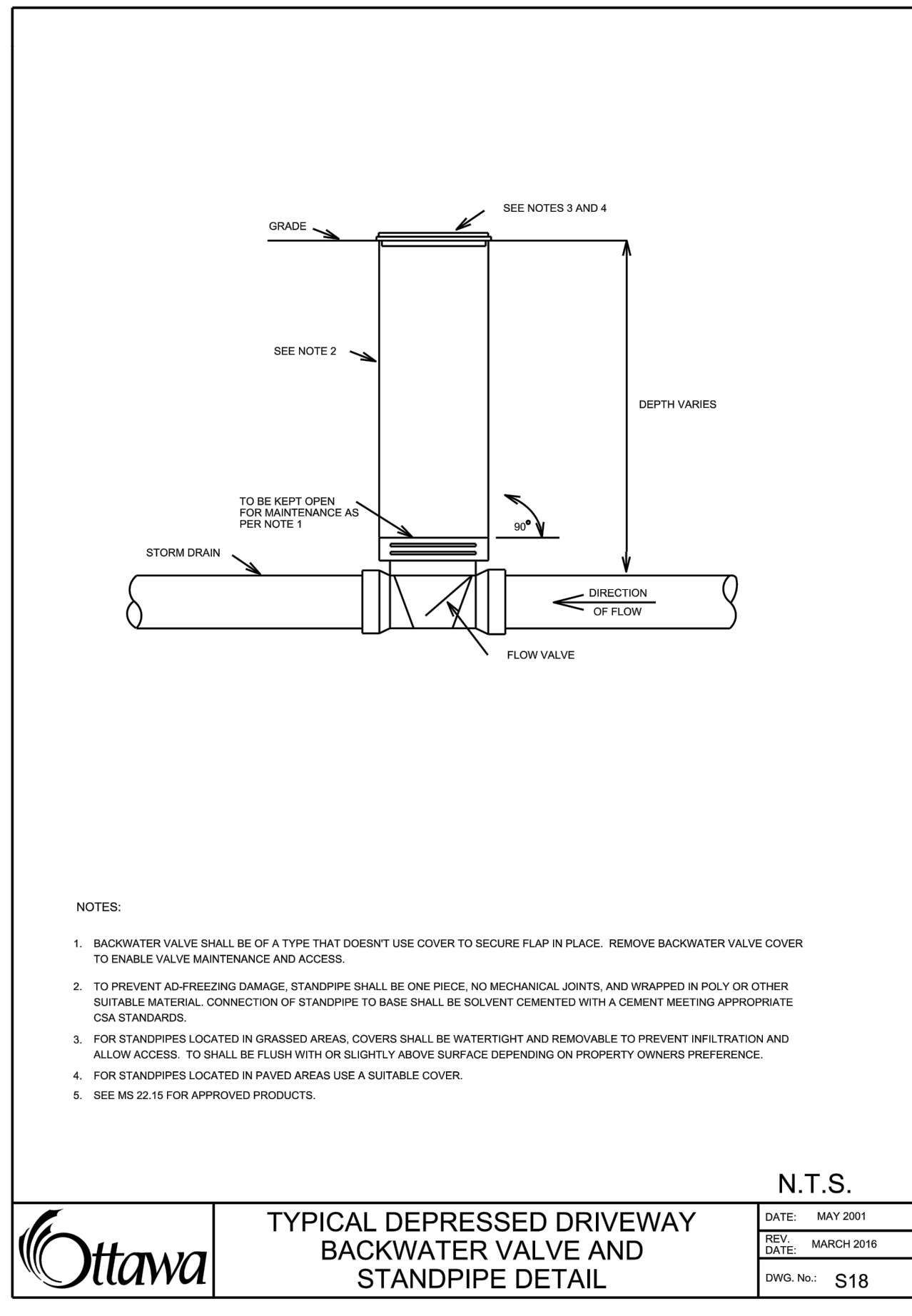
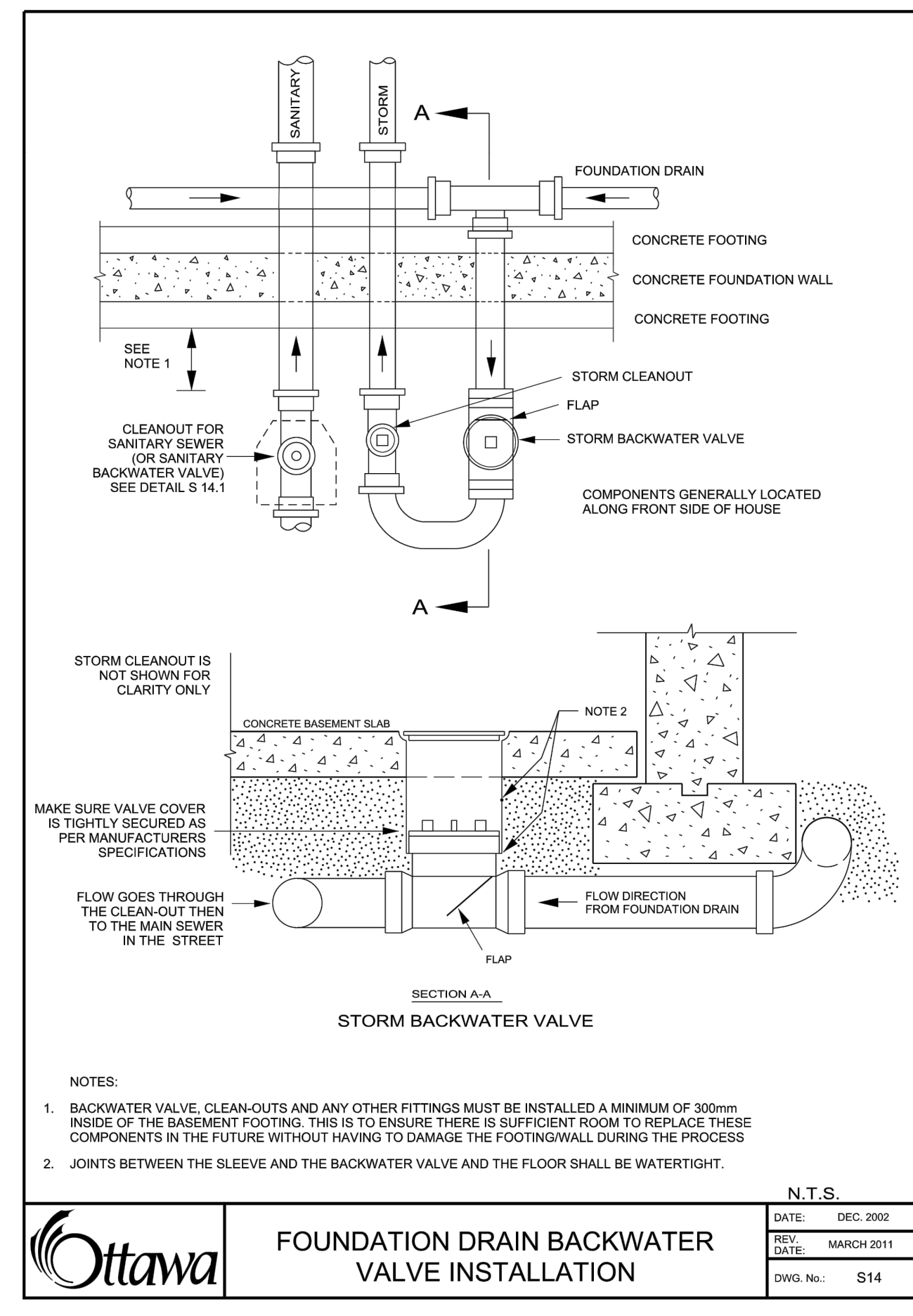
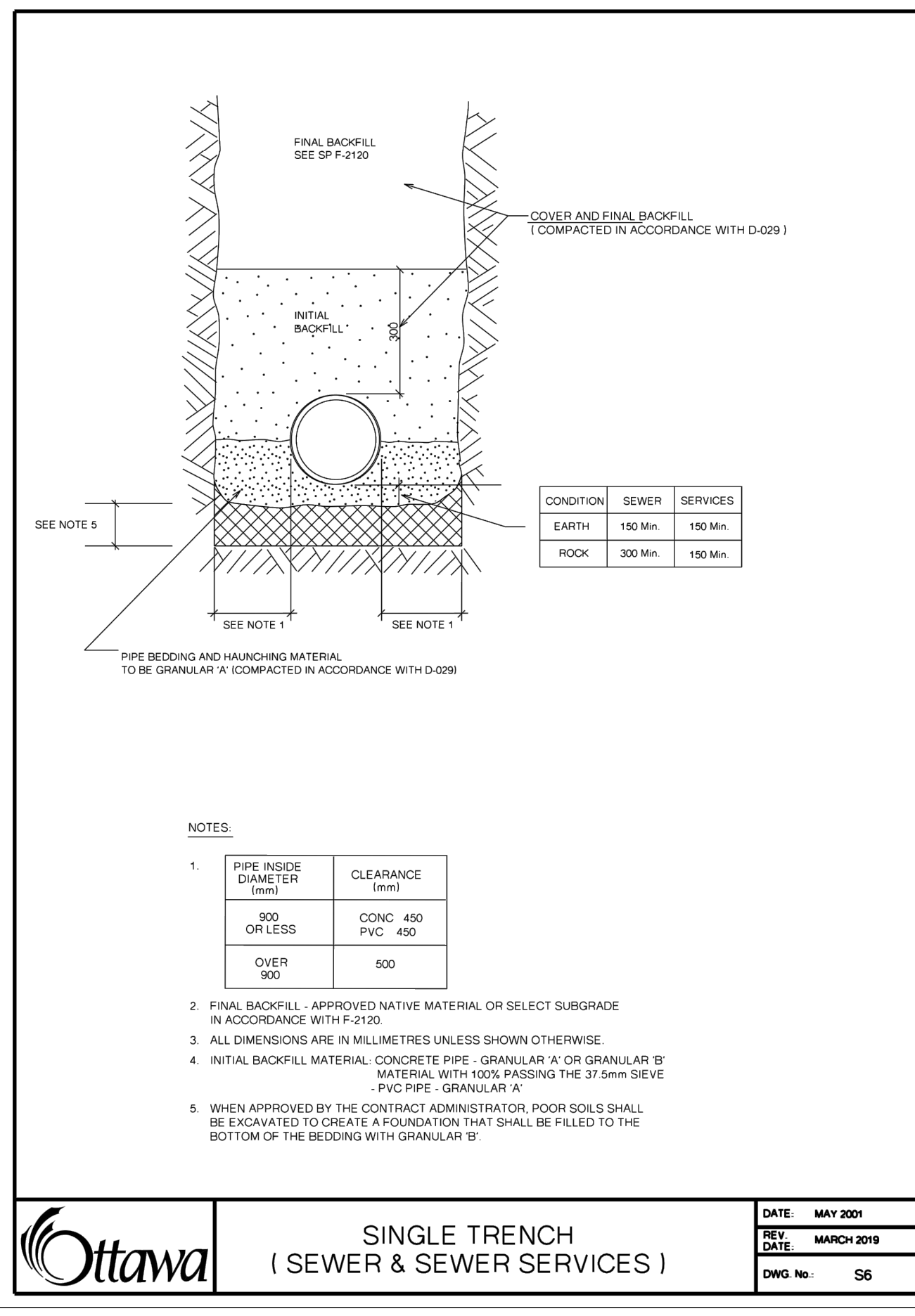


| | | | |
|-----|---------------------|------------|---------|
| | | | |
| | | | |
| | | | |
| | | | |
| 1 | CITY SPC SUBMISSION | JUNE 30/20 | JX |
| NO. | REVISIONS | DATE | INITIAL |

| | |
|----------|----------|
| SCALE: | N.T.S. |
| DESIGN: | JX |
| DRAWN: | MH |
| CHECKED: | GSC/J |
| DATE: | MAY 2020 |

inley GROUP CONSULTING ENGINEERS PLANNERS

CONTRACT No. 17004 001-17004 - N1



| | | | |
|-----|---------------------|------------|---------|
| | | | |
| | | | |
| | | | |
| 1 | CITY SPC SUBMISSION | JUNE 30/20 | JX |
| NO. | REVISIONS | DATE | INITIAL |

Not Valid Unless Signed And Dated

 **Professional Engineers**
Ontario

JUNE 30, 2020

Limited Licensee

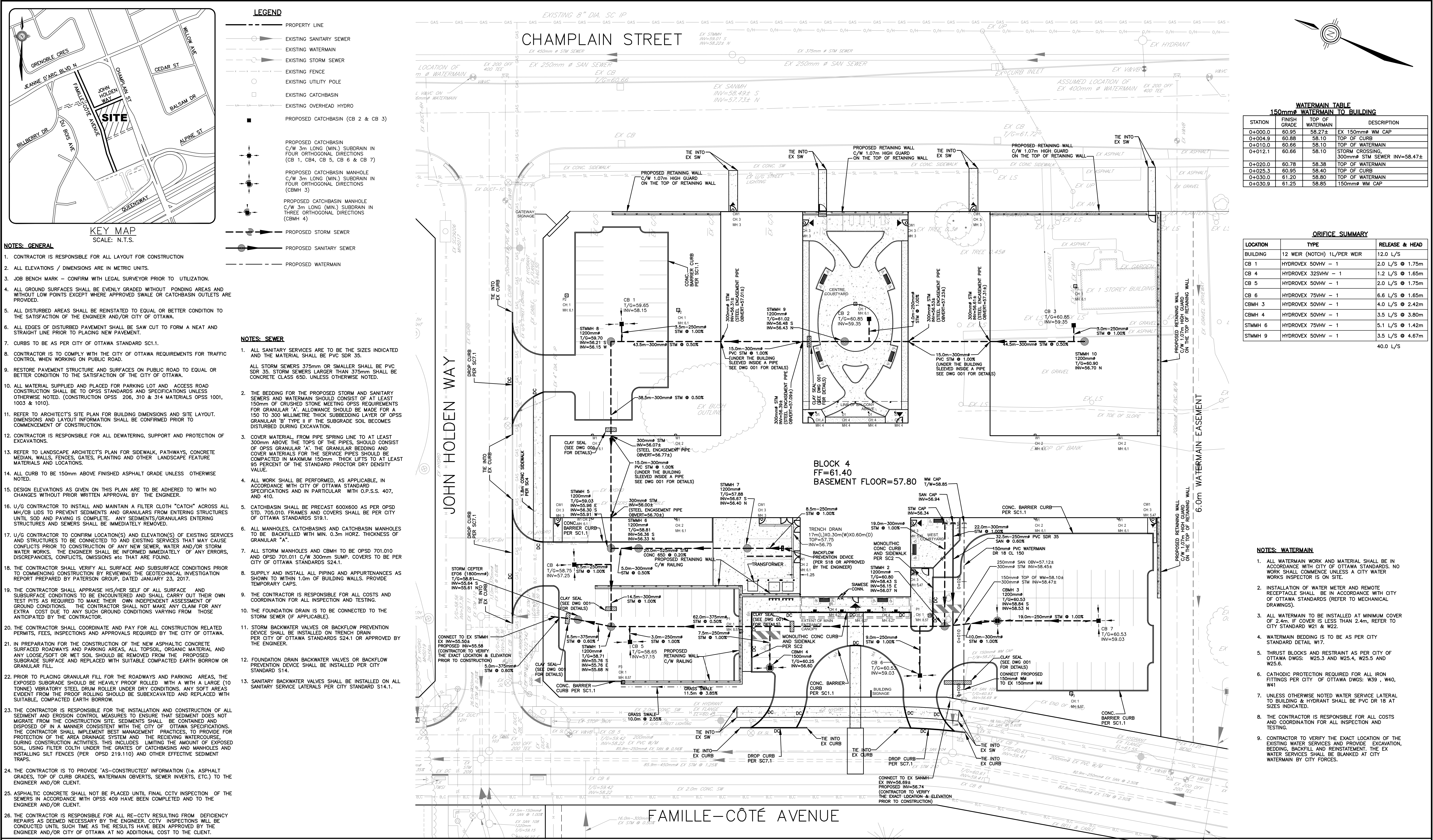
Name: J.W.XU
Number: 100171806
Category: CIVIL: see limitation
Limitations: *J Xu*
This licence is subject to the limitations as detailed on the certificate.
Association of Professional Engineers of Ontario

| | |
|----------|----------|
| SCALE: | N.T.S. |
| DESIGN: | JX |
| DRAWN: | MH |
| CHECKED: | GSC/JX |
| DATE: | MAY 2020 |

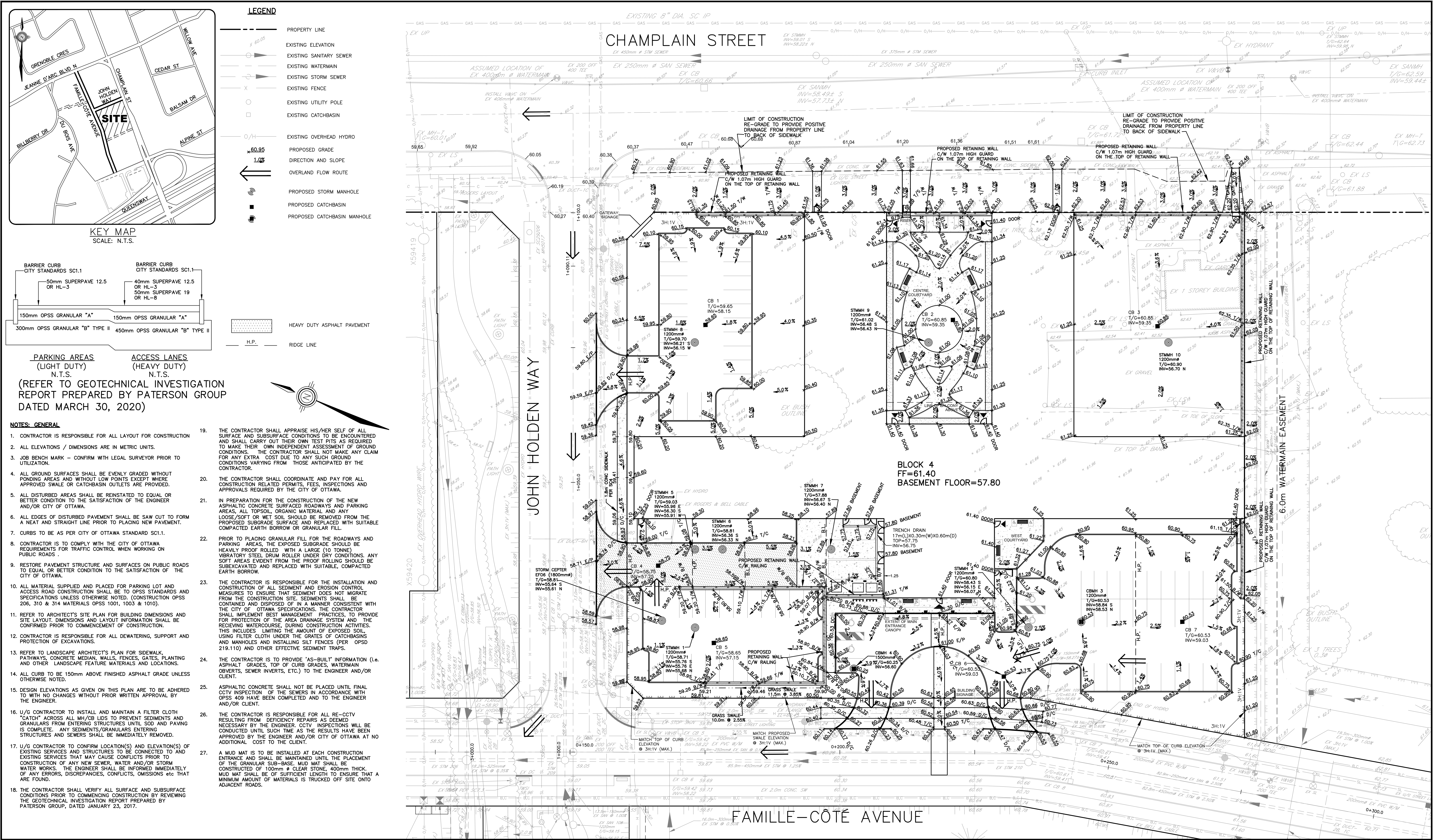
| |
|---|
| REVERA LONG TERM CARE BUILDING 850 CHAMPLAIN ST CITY OF OTTAWA |
| LEGEND, NOTES AND DETAILS |

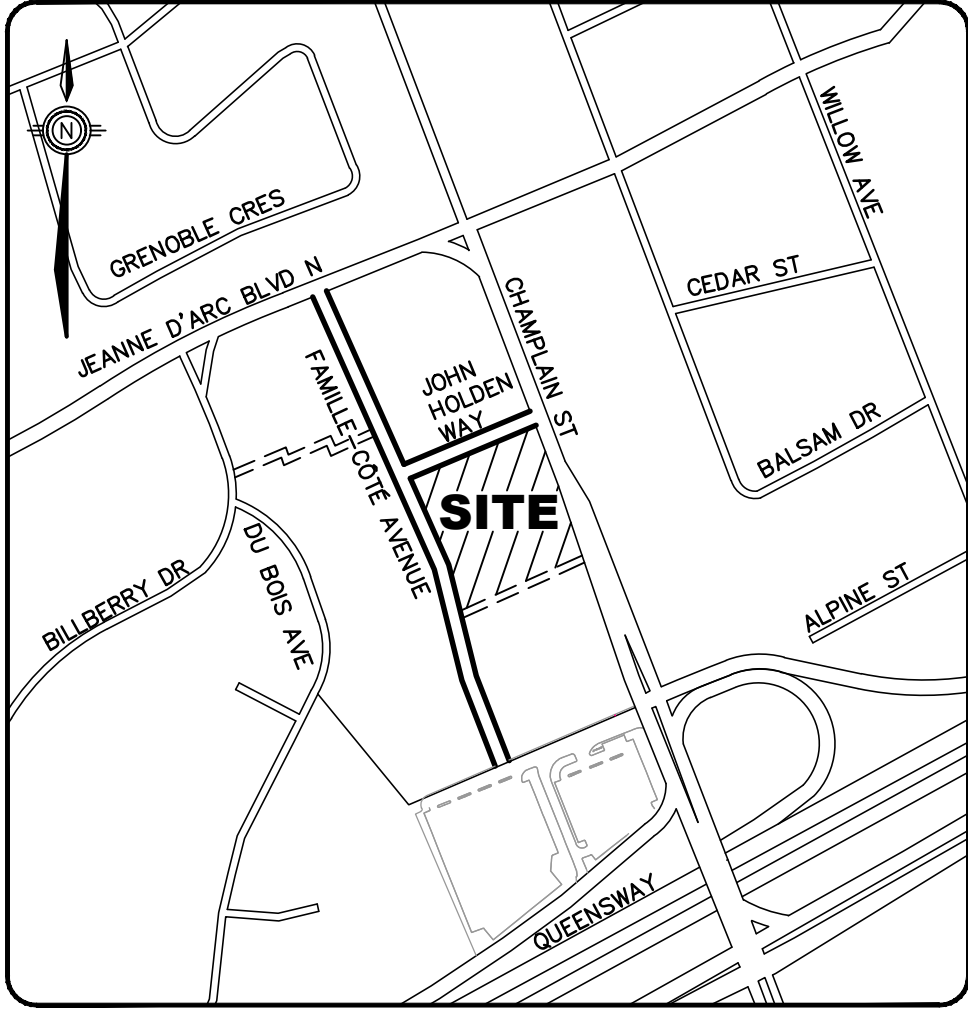


| | |
|--------------------|----------------|
| CONTRACT No. 17004 | 002-17004 - N2 |
|--------------------|----------------|



Jun 30, 2020 C:\Users\jxu\Desktop\17004-1 - Revera - LTC Site (Block 4) Civil Services\Design\003-17004-S1.dwg





KEY MAP
SCALE: N.T.S.

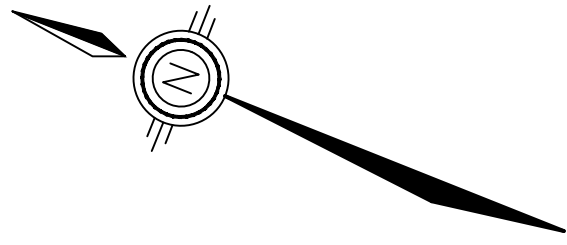
LEGEND



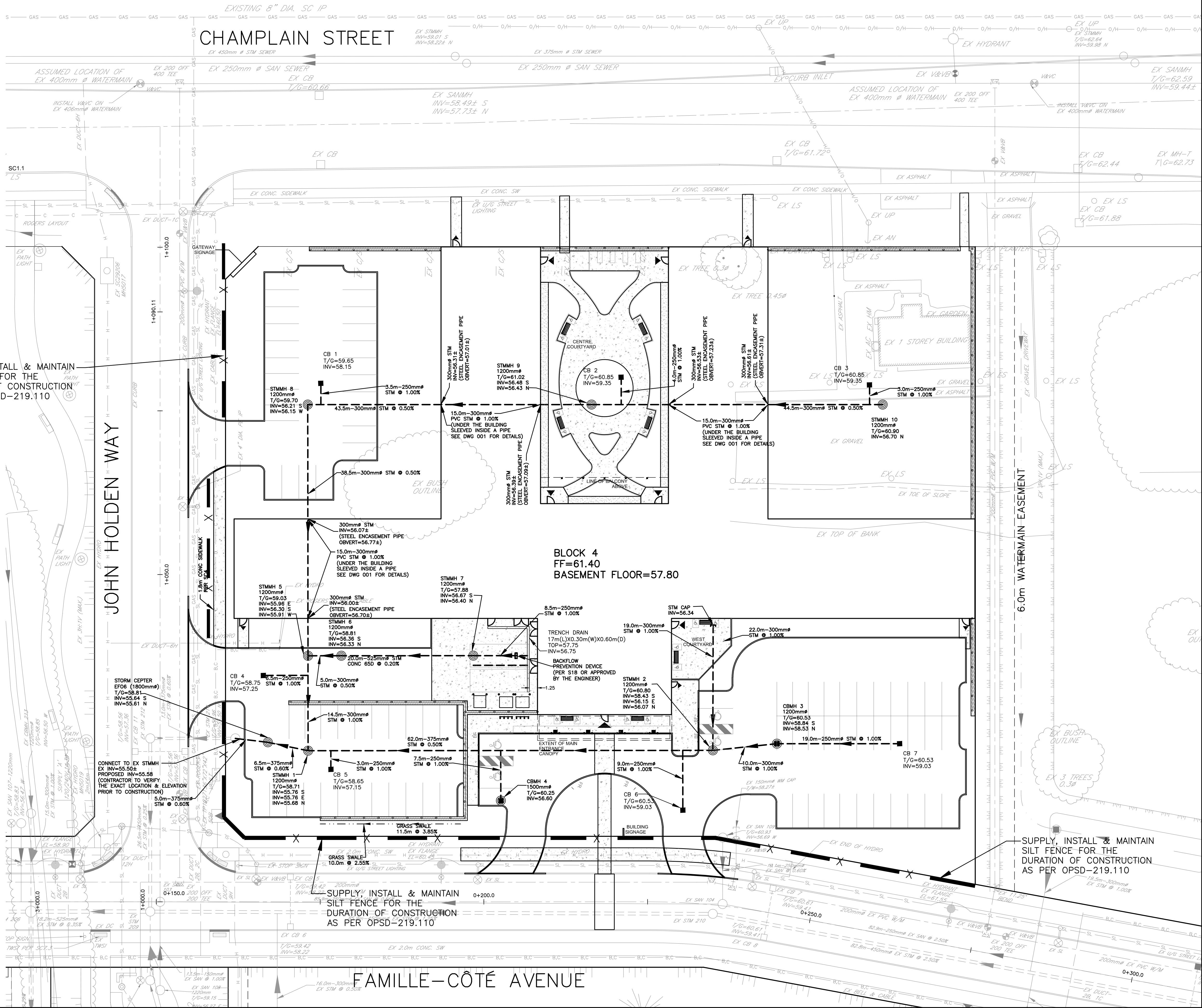
SILT FENCE
(PER OPSD-219.110)

NOTES:

1. THE CONTRACTOR IS RESPONSIBLE FOR THE INSTALLATION AND CONSTRUCTION OF ALL SEDIMENT AND EROSION CONTROL MEASURES TO ENSURE THAT SEDIMENT DOES NOT MIGRATE FROM THE CONSTRUCTION SITE. THE CONTRACTOR SHALL IMPLEMENT BEST MANAGEMENT PRACTICES, TO PROVIDE FOR PROTECTION OF THE AREA DRAINAGE SYSTEM AND THE RECEIVING WATERCOURSE DURING CONSTRUCTION ACTIVITIES. THIS INCLUDES LIMITING THE AMOUNT OF EXPOSED SOIL, USING FILTER CLOTH UNDER THE GRATES OF CATCHBASINS AND MANHOLES (SEE NOTE 2) AND INSTALLING SILT FENCES (PER OPSD 219.110) AND OTHER EFFECTIVE SEDIMENT TRAPS.
2. THE CONTRACTOR IS TO SUPPLY, INSTALL AND MAINTAIN FILTER CLOTH BETWEEN THE FRAME AND COVER ON ALL PLANNED CATCH BASINS AND MANHOLES FOR THE DURATION OF CONSTRUCTION.
3. A MUD MAT IS TO BE INSTALLED AT EACH CONSTRUCTION ENTRANCE AND SHALL BE MAINTAINED UNTIL THE PLACEMENT OF THE GRANULAR SUB-BASE. MUD MAT SHALL BE CONSTRUCTED OF 100mmØ CLEAR STONE, 400mm THICK. MUD MAT SHALL BE OF SUFFICIENT LENGTH TO ENSURE THAT A MINIMUM AMOUNT OF MATERIALS IS TRUCKED OFF SITE. ONTO ADJACENT ROADS.
4. IN ORDER TO AVOID POLLUTANTS FROM BEING DISCHARGED, THE CONTRACTOR MUST MINIMIZE THE GENERATION OF DUST THROUGH APPROPRIATE APPLICATION OF WATER OR OTHER DUST SUPPRESSION TECHNIQUES.
5. THE CONTRACTOR IS PROHIBITED FROM DISCHARGING GROUND WATER OR ACCUMULATED STORMWATER THAT IS REMOVED FROM EXCAVATIONS, TRENCHES, FOUNDATIONS, ECT. UNLESS SUCH WATERS ARE FIRST EFFECTIVELY TREATED BY APPROPRIATE CONTROLS AS SEDIMENT SOCKS, DEWATERING TANKS, ETC.
6. THE CONTRACTOR MUST INITIATE SOIL STABILIZATION MEASURES IMMEDIATELY WHENEVER EARTH-DISTURBING ACTIVITIES HAVE PERMANENTLY OR TEMPORARILY CEASED ON ANY PORTION OF THE SITE.
7. THE CONTRACTOR MUST VERIFY SEDIMENT CONTROL DEVICES ON A DAILY BASIS, MONITOR CONTROL MEASURES PERIODICALLY THROUGH SITE INSPECTIONS AND RECORD MAINTENANCE ACTIVITIES TAKEN DURING CONSTRUCTION. INSPECTIONS MUST BE RECORDED REGULARLY VIA DATE-STAMPED PHOTOGRAPHS, INSPECTION REPORTS, OR OTHER RECORDING PROCESS.
8. EACH SUBCONTRACTOR IS REQUIRED TO COMPLY WITH THE EROSION AND SEDIMENT CONTROL PLAN.
9. THE CONTRACTOR SHALL IMPLEMENT BEST MANAGEMENT PRACTICES, TO PROVIDE FOR PROTECTION OF THE AREA DRAINAGE SYSTEM AND RECEIVING WATERCOURSE, DURING CONSTRUCTION ACTIVITIES. THE CONTRACTOR ACKNOWLEDGES THAT FAILURE TO IMPLEMENT APPROPRIATE EROSION AND SEDIMENT CONTROL MEASURES MAY BE SUBJECT TO PENALTIES IMPOSED BY ANY APPLICABLE REGULATORY AGENCY.



SUPPLY, INSTALL & MAINTAIN
SILT FENCE FOR THE
DURATION OF CONSTRUCTION
AS PER OPSD-219.110



SUPPLY, INSTALL & MAINTAIN
SILT FENCE FOR THE
DURATION OF CONSTRUCTION
AS PER OPSD-219.110

CONTRACT DRAWINGS:
Contractor must verify all dimensions and be responsible for same. Any discrepancies must be reported to the Engineer before commencing work. Drawings are not to be scaled. Drawings may not be used for any purpose other than that stipulated in the contract agreement between the owner/client and the Engineer without the express written consent of Ainley Graham & Associates Limited. Use of these drawings by any party for any other purpose is subject to the following caution.

CAUTION: The information contained in this drawing is solely for the intended recipient. Any copying, distribution or use by others without the express written consent of Ainley Graham & Associates Limited is prohibited. The recipient is responsible for confirming the accuracy and completeness of the information with the originator. The recipient assumes all risks and liabilities associated with the use of the drawings. The recipient will save and hold harmless Ainley Graham & Associates Limited for any claims whatsoever associated with or related to the use of the drawings. The recipient will not reuse any portion of the drawings for any future project without the express written permission of Ainley Graham & Associates Limited.

| 1 | CITY SPC SUBMISSION | JUNE 30/20 | JX |
|-----|---------------------|------------|---------|
| NO. | REVISIONS | DATE | INITIAL |

Not Valid Unless Signed And Dated

Professional Engineers
Ontario
Limited Licensee
Name: J.W.XU
Number: 160171806
Category: CIVIL-see limitation
Limitations:
This licence is subject to the Limitations as detailed on the certificate.
Association of Professional Engineers of Ontario

| |
|-----------------|
| SCALE: 1 : 300 |
| DESIGN: JX |
| DRAWN: MH |
| CHECKED: GSC/JX |
| DATE: MAY 2020 |

REVERA
LONG TERM CARE BUILDING
850 CHAMPLAIN ST
CITY OF OTTAWA

EROSION AND SEDIMENT CONTROL PLAN

Ainley GROUP CONSULTING ENGINEERS PLANNERS

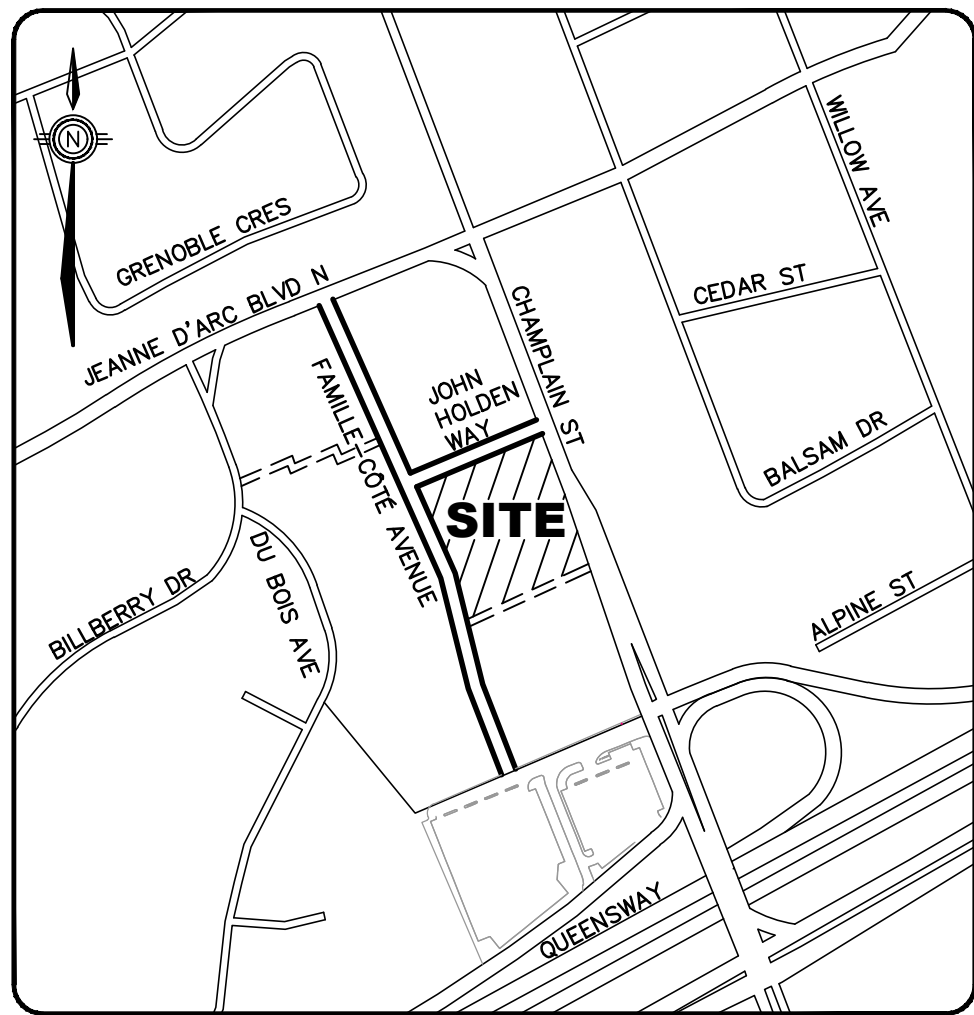
CONTRACT No. 17004 005-17004 - SC1

C:\Users\jdu\Desktop\17004-1-Rev0 - LTC Site (Block 4) Civil Services\Design\006-17004-SWM1.dwg

CAUTION: The information contained in this drawing is solely for the intended recipient. Any copying, distribution or use by others without the express written consent of Aninley Graham & Associates Limited is prohibited. The recipient is responsible for confirming the accuracy and completeness of the information with the originator. The recipient assumes all risks and liabilities associated with the use of the drawings. The recipient will save and hold harmless Aninley Graham & Associates Limited for any claims whatsoever associated with or related to the use of the drawings. The recipient will not reuse any portion of the drawings for any future project without the express written permission of Aninley Graham & Associates Limited.

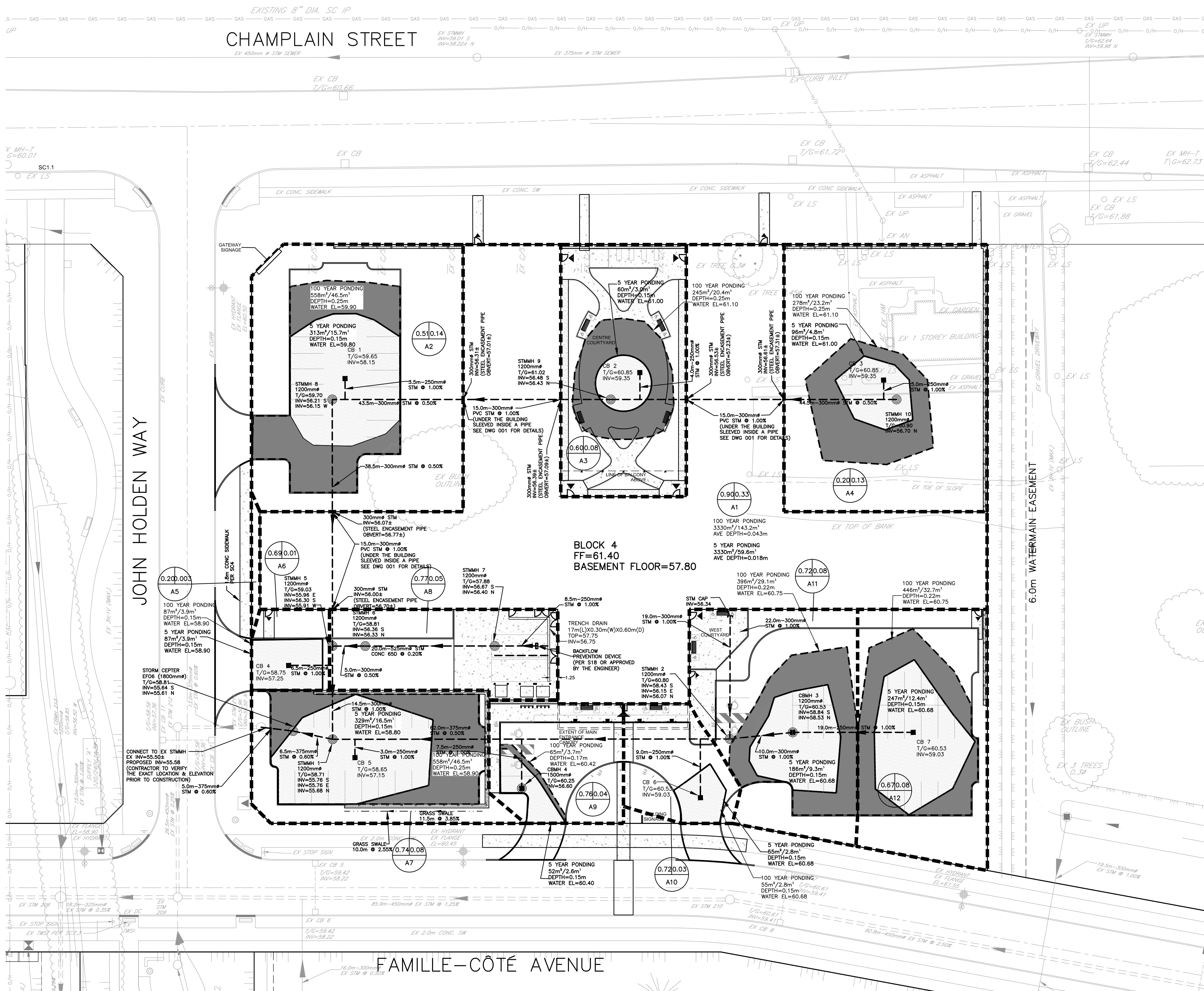
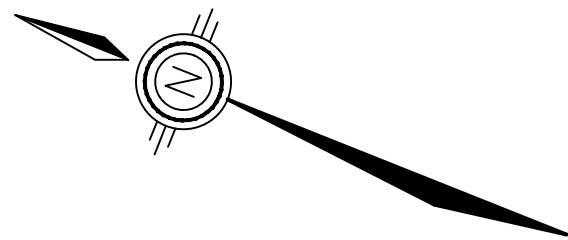
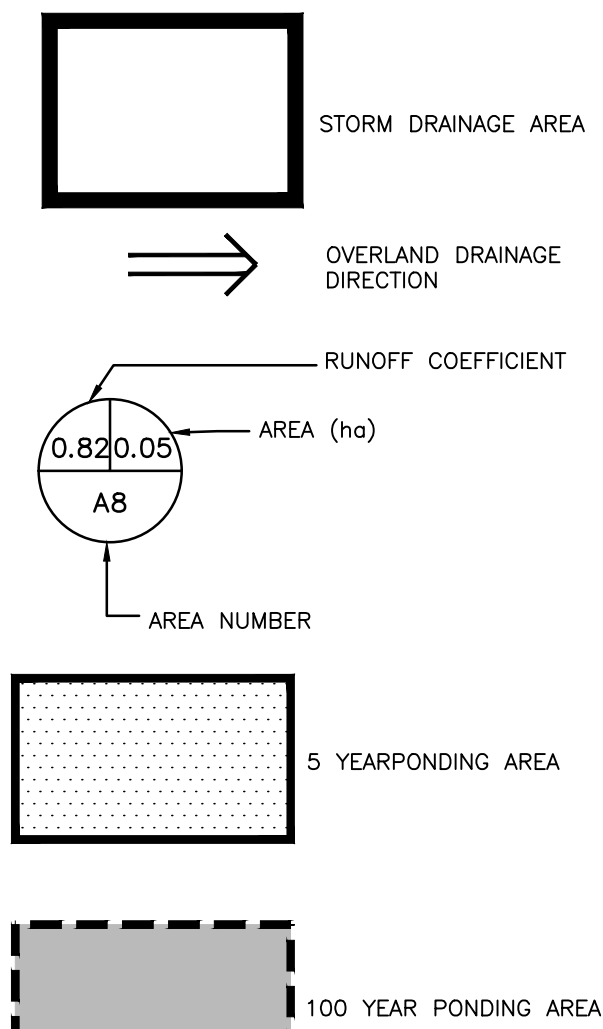
CONTRACT DRAWINGS: Contractor must verify all dimensions and be responsible for same. Any discrepancies must be reported to the Engineer before commencing work. Drawings are not to be scaled. Drawings may not be used for any purpose other than that stipulated in the contract agreement between the owner/client and the Engineer without the express written consent of Aninley Graham & Associates Limited. Use of these drawings by any party for any other purpose is subject to the following caution.

| ORIFICE SUMMARY | | |
|-----------------|-----------------------------|-----------------|
| LOCATION | TYPE | RELEASE & HEAD |
| BUILDING | 12 WEIR (NOTCH) 1L/PER WEIR | 12.0 L/S |
| CB 1 | HYDROVEX 50VHV - 1 | 2.0 L/S @ 1.75m |
| CB 4 | HYDROVEX 32SVHV - 1 | 1.2 L/S @ 1.65m |
| CB 5 | HYDROVEX 50VHV - 1 | 2.0 L/S @ 1.75m |
| CB 6 | HYDROVEX 75VHV - 1 | 6.6 L/S @ 1.65m |
| CBMH 3 | HYDROVEX 50VHV - 1 | 4.0 L/S @ 2.42m |
| CBMH 4 | HYDROVEX 50VHV - 1 | 3.5 L/S @ 3.80m |
| STMMH 6 | HYDROVEX 75VHV - 1 | 5.1 L/S @ 1.42m |
| STMMH 9 | HYDROVEX 50VHV - 1 | 3.5 L/S @ 4.67m |
| | | 40.0 L/S |



KEY MAP
SCALE: N.T.S.

LEGEND



| NO. | REVISIONS | DATE | INITIAL |
|-----|---------------------|------------|---------|
| 1 | CITY SPC SUBMISSION | JUNE 30/20 | JX |

Not Valid Unless Signed And Dated
Professional Engineers
Ontario
June 30, 2020
Limited Licensee
Name: J.W.XU
Number: 100171806
Category: CIVIL - see limitation
Limitations:
This licence is subject to the Limitations as detailed on the certificate.
Association of Professional Engineers of Ontario

SCALE: 1 : 300
DESIGN: JX
DRAWN: MH
CHECKED: GSC/JX
DATE: MAY 2020

REVERA
LONG TERM CARE BUILDING
850 CHAMPLAIN ST
CITY OF OTTAWA
STORM WATER MANAGEMENT PLAN

Aninley GROUP
CONSULTING ENGINEERS PLANNERS
CONTRACT No. 17004 006-17004-SWM1