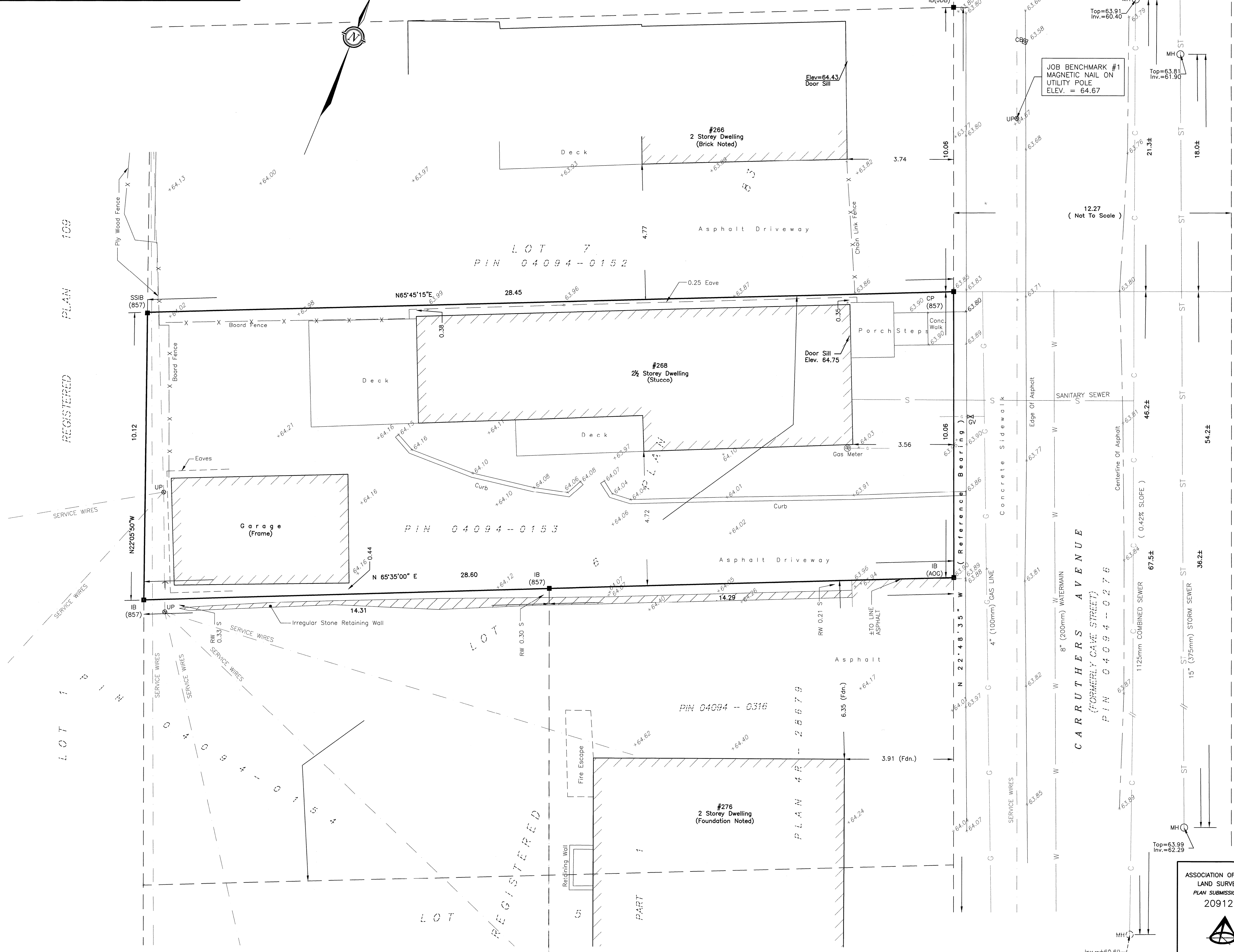
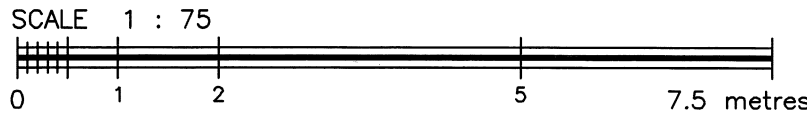


**METRIC**  
DISTANCES AND ELEVATIONS SHOWN ON THIS PLAN ARE IN METRES  
AND CAN BE CONVERTED TO FEET BY DIVIDING BY 0.3048



TOPOGRAPHIC SURVEY OF  
PART OF LOT 6  
REGISTERED PLAN 83  
CITY OF OTTAWA



**FAIRHALL, MOFFATT & WOODLAND LIMITED**  
ONTARIO LAND SURVEYORS

**ELEVATION NOTES**

- ELEVATIONS SHOWN HEREON ARE REFERRED TO GEODETIC DATUM (CGVD28).
- IT IS THE RESPONSIBILITY OF THE USER OF THIS INFORMATION TO VERIFY THAT THE JOB BENCHMARK HAS NOT BEEN ALTERED OR DISTURBED AND THAT IT'S RELATIVE ELEVATION AND DESCRIPTION AGREE WITH THE INFORMATION SHOWN ON THIS DRAWING.

**UTILITY NOTES**

- THIS DRAWING CANNOT BE ACCEPTED AS ACKNOWLEDGING ALL OF THE UNDERGROUND UTILITIES AND IT WILL BE THE RESPONSIBILITY OF THE USER TO CONTACT THE RESPECTIVE UTILITY AUTHORITIES FOR CONFIRMATION OR LOCATION.
- UNDERGROUND UTILITIES, AS REPORTED ON THIS DRAWING, ARE NOT BASED ON AN ACTUAL 'FIELD LOCATE' BY THE RESPECTIVE UTILITY AGENCIES BUT HAVE BEEN COMPILED FROM DATA OBTAINED FROM THE FOLLOWING SOURCE:  
a) CITY OF OTTAWA PUBLIC UTILITIES REGISTRY.
- BEFORE ANY WORK INVOLVING PROBING, EXCAVATING, ETC., A FIELD LOCATION OF UNDERGROUND PLANT BY THE PERTINENT UTILITY AUTHORITY IS MANDATORY.

**NOTES**

BEARINGS HEREON ARE ASTRONOMIC AND ARE REFERRED TO THE WESTERLY LIMIT OF CARRUTHERS AVENUE AS SHOWN ON PLAN OF SURVEY BY FAIRHALL, MOFFATT & WOODLAND LIMITED, O.L.S., DATED 04 OCT. 2018, HAVING A BEARING OF N 22°48'35" W.

**LEGEND**

- SURVEY MONUMENT FOUND
- SSIB - SHORT STANDARD IRON BAR
- IB - IRON BAR
- CP - CONCRETE PIN
- PIN - PROPERTY IDENTIFIER NUMBER
- (857) - FAIRHALL, MOFFATT & WOODLAND LIMITED, O.L.S.
- (AOG) - ANNIS, O'SULLIVAN, VOLLEBEKK LTD., O.L.S.
- (JOB) - J.D. BARNES LIMITED O.L.S.
- CURB
- CB - CATCHBASIN
- UP - UTILITY POLE
- GV - GAS VALVE
- ⊕ - GAS METER
- INV. - INVERT
- OVERHEAD UTILITY WIRES
- COMBINED SEWER
- STORM SEWER
- WATERMAIN
- GAS LINE
- SANITARY SEWER
- FC - FENCE CORNER
- FP - FENCE POST
- RW - RETAINING WALL
- S - SOUTH
- E - EAST
- FDN. - FOUNDATION

**SURVEYOR'S CERTIFICATE**

I CERTIFY THAT:

- THIS SURVEY AND PLAN ARE CORRECT AND IN ACCORDANCE WITH THE SURVEYS ACT, THE SURVEYORS ACT, THE LAND TITLES ACT AND THE REGULATIONS MADE UNDER THEM.
- THE SURVEY WAS COMPLETED ON APRIL 30, 2019.

2019/06/03  
DATE

JOHN H. GUTRI  
ONTARIO LAND SURVEYOR

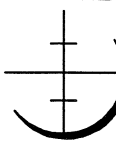
ASSOCIATION OF ONTARIO  
LAND SURVEYORS  
PLAN SUBMISSION FORM  
2091214



THIS PLAN IS NOT VALID  
UNLESS IT IS AN EMBOSSED  
ORIGINAL COPY  
ISSUED BY THE SURVEYOR  
In accordance with  
Regulation 1026, Section 29 (3).

**Fairhall  
Moffatt &  
Woodland**

LIMITED  
ONTARIO LAND SURVEYORS  
Surveying and Land Information Services  
100-600 TERRY FOX DRIVE, KANATA, ONTARIO K2L 4B6  
TEL: (613) 591-2580 FAX: (613) 591-1495  
www.fmw.on.ca



JOB No.  
Z 15800  
E 365265, N 5029504  
REFERENCE No.  
18(a) - 83  
S:\JMS\215800\DWG 2019-05-31  
TP\_z158.dwg (ss)