



PART OF LOT 31  
CONCESSION 11  
GEOGRAPHIC TOWNSHIP OF GOULBOURN  
CITY OF OTTAWA

SURVEY BY:  
ANNIS, O'SULLIVAN VOLLEBECK LTD.

2 2020/06/08 Issued for Site Plan Application

1 2020/04/06 Issued for Client Review

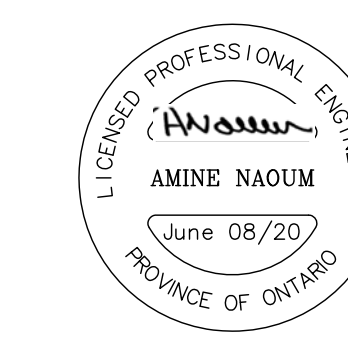
No. Date Description

Revisions

Stamp

Capital Engineering  
Group Ltd  
Municipal / Land Development

110 Dosssetter Way  
Ottawa, Ontario K1G 4S5  
T: (613)739-0776 F: (613)739-7302  
E: cegl@rogers.com



Project  
**St. Martin de Porres Catholic School**  
Additional Parking  
and New Private Hydrant

20 McKittrick Drive  
Former City of Kanata

Drawing

Servicing, Grading and Erosion  
& Sediment Control Plan

Scale  
1:300

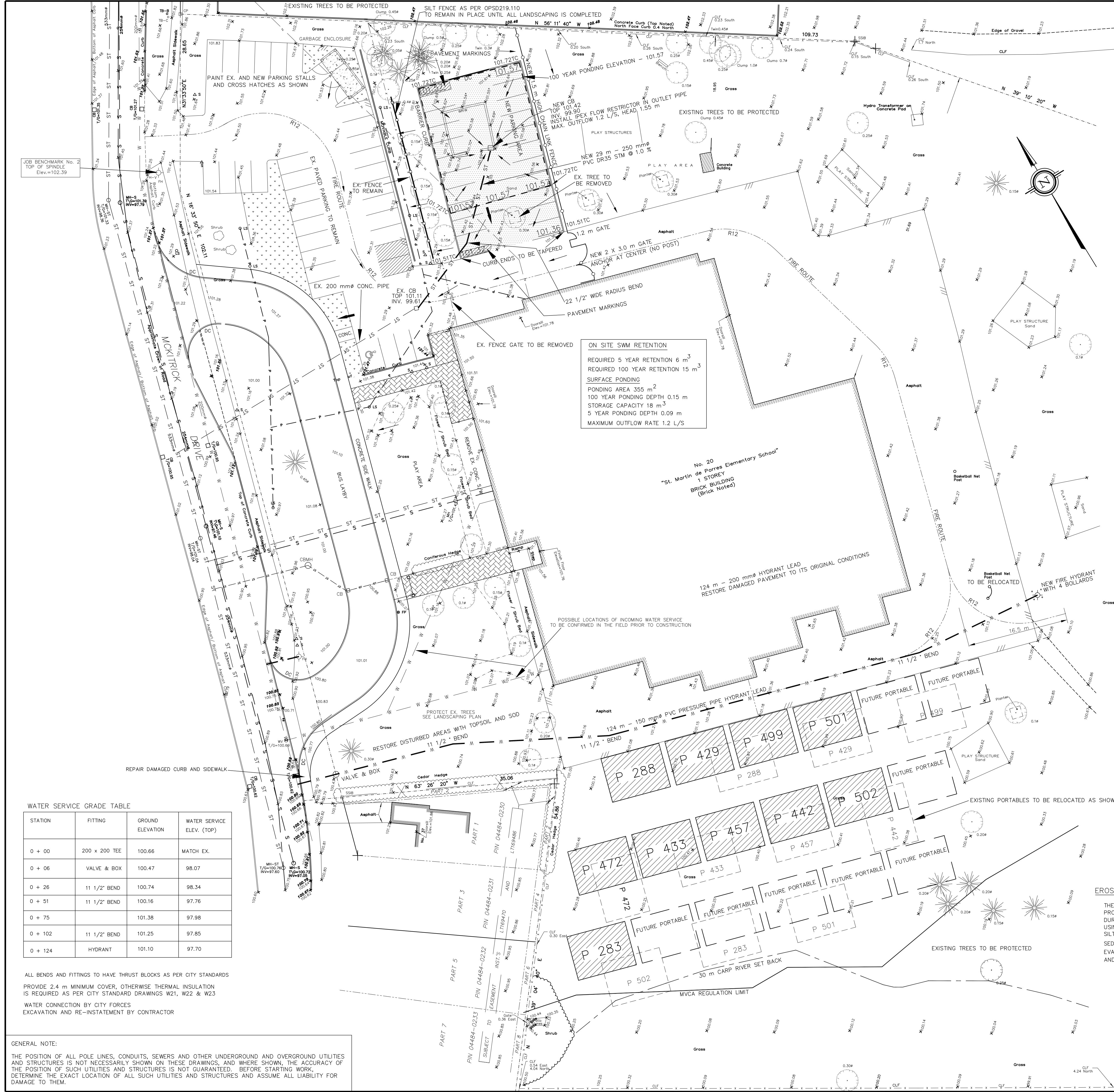
Designed/Drawn by  
AN / Andrew

Approved by  
A. Naoum

Drawing Date  
2020/04/06

Project No.  
CEGL 201001

Sheet No.  
**G1**



**PAVEMENT STRUCTURE**

GRANULAR B TYPE 2 300 mm  
GRANULAR A 150 mm  
HL3 OR SUPERPAVE 12.5 50 mm

GEOTECHNICAL CONSULTANT TO INSPECT SUBGRADE DURING CONSTRUCTION, AND CONFIRM PAVEMENT STRUCTURE

**BENCH MARK**

TOP OF SPINDLE OF EXISTING FIRE HYDRANT - ELEVATION 102.39

- LEGEND:**
- 100.83 PROPOSED ELEVATION
  - X101.05 EXISTING ELEVATION
  - 100.83TC TOP OF CURB
  - DC DEPRESSED CURB
  - DIRECTION OF FLOW
  - UP UTILITY POLE
  - LS LIGHT STANDARD
  - S SANITARY SEWER
  - ST EX. STORM
  - ST NEW STORM
  - W WATER
  - GAS
  - PROPERTY LINE
  - P UNDERGROUND HYDRO
  - Light Duty Asphalt
  - 100 YEAR PONDING
  - OVERLAND FLOW ROUTE
  - SILT FENCE

- NOTES**
- DO NOT SCALE DRAWING
  - VERIFY LOCATIONS AND ELEVATIONS OF EXISTING SERVICES PRIOR TO CONSTRUCTION. CONTRACTOR IS RESPONSIBLE TO OBTAIN LOCATES. CALL 1-800-400-2255 BEFORE EXCAVATING
  - CONTRACTOR IS TO COMPLY WITH THE CITY OF OTTAWA REQUIREMENTS FOR TRAFFIC CONTROL WHEN WORKING ON MUNICIPAL ROAD.
  - ALL WORK AND MATERIALS SHALL BE IN ACCORDANCE WITH THE CITY OF OTTAWA AND / OR ONTARIO PROVINCIAL STANDARDS (OPS)
  - NEW STORM MANHOLE AND CBMH TO BE 1200 mm AS PER OPSD 701.010
  - CBMH COVER AS PER CITY STANDARD DRAWING S19
  - NEW CATCH BASINS TO BE 600 mm X 600 mm AS PER OPSD 705.010
  - CATCH BASIN COVER AS PER CITY STANDARD DRAWING S19.1
  - STORM MANHOLES AND CBMH'S TO BE CONSTRUCTED WITH 300 mm SUMPS, CB'S WITH 600 mm SUMPS
  - NEW CHAIN LINK FENCE AS PER CITY OF OTTAWA STANDARD DRAWING F9
  - BARRIER AND DEPRESSED CURB AS PER STANDARD DRAWING SC1.1
  - NEW SEWERS TO BE INSPECTED USING CCTV AS REQUIRED BY THE CITY
  - CLEAR AND GRUB AND STRIP TOPSOIL AS NECESSARY AND DISPOSE OFFSITE RE-INSTATE ALL DISTURBED LANDSCAPING WITH TOPSOIL AND SOD
  - CONTRACTOR IS RESPONSIBLE TO OBTAIN ALL NECESSARY PERMITS PRIOR TO CONSTRUCTION
  - RESTORE PAVEMENT STRUCTURE, CURBS AND SURFACES ON EXISTING ROADS TO THEIR ORIGINAL CONDITIONS STANDARD ROAD CUT REINSTATEMENT AS PER Std. Dwg. R10
  - THIS PLAN SHOULD BE READ IN CONJUNCTION WITH THE SITE SERVING AND SWM REPORT PREPARED BY CAPITAL ENGINEERING GROUP LTD AND THE GEOTECHNICAL REPORT PREPARED BY HOLEU CHEVRIER ENGINEERING
  - A LICENSED GEOTECHNICAL ENGINEER MUST INSPECT THE SUBGRADE PRIOR TO CONSTRUCTION TO CONFIRM THE PAVEMENT STRUCTURE

**EROSION AND SEDIMENT CONTROL**

THE CONTRACTOR SHALL IMPLEMENT BEST MANAGEMENT PRACTICES, TO PROVIDE FOR THE PROTECTION OF THE AREA DRAINAGE SYSTEM AND THE RECEIVING WATER COURSE, DURING CONSTRUCTION ACTIVITIES. THIS INCLUDES LIMITING THE AMOUNT OF EXPOSED SOIL, USING FILTER CLOTH UNDER THE GRATES OF CATCHBASINS AND MANHOLES AND INSTALLING SILT FENCES AND OTHER EFFECTIVE SEDIMENT TRAPS.

SEDIMENT AND EROSION CONTROL MEASURES TO CONFORM TO MOE GUIDELINE B-6 "GUIDELINES FOR EVALUATING CONSTRUCTION ACTIVITIES IMPACTING ON WATER RESOURCES", OR LOCAL STANDARDS AND CODES WHICHEVER IS MORE STRINGENT.

THE MEASURES SHALL MEET THE FOLLOWING OBJECTIVES:

- PREVENT LOSS OF SOIL DURING CONSTRUCTION BY STORM RUNOFF AND/OR WIND EROSION, INCLUDING PROTECTING TOPSOIL BY STOCKPILING FOR REUSE
- PREVENT SEDIMENTATION OF STORM SEWERS OR RECEIVING STREAMS
- PREVENT POLLUTING THE AIR WITH DUST AND PARTICULATE MATTER

**GENERAL NOTE:**

THE POSITION OF ALL POLE LINES, CONDUITS, SEWERS AND OTHER UNDERGROUND AND OVERGROUND UTILITIES AND STRUCTURES IS NOT NECESSARILY SHOWN ON THESE DRAWINGS, AND WHERE SHOWN, THE ACCURACY OF THE POSITION OF SUCH UTILITIES AND STRUCTURES IS NOT GUARANTEED. BEFORE STARTING WORK, DETERMINE THE EXACT LOCATION OF ALL SUCH UTILITIES AND STRUCTURES AND ASSUME ALL LIABILITY FOR DAMAGE TO THEM.